

Play the 1st Trombone (♭)

with the
“Philharmonic Wind Orchestra”

Famous Overtures 5

EMR 31085

- 1) Die Schöne Galathée (Suppé)
- 2) La Traviata (Verdi)
- 3) Don Pasquale (Donizetti)
- 4) The Queen Of Spades (Tchaikovsky)
- 5) La Vie Parisienne (Offenbach)
- 6) Coriolan (Beethoven)
- 7) Giselle (Adam)
- 8) Norma (Bellini)
- 9) An American In Paris (Gershwin)

Print & Listen
Drucken & Anhören
Imprimer & Ecouter



www.reift.ch



EDITIONS MARC REIFT

Route du Golf 150 • CH-3963 Crans-Montana (Switzerland)

Tel. +41 (0) 27 483 12 00 • Fax +41 (0) 27 483 42 43 • E-Mail : info@reift.ch • www.reift.ch

DISCOGRAPHY



Famous Overtures 5

Track N°	Titel / Title (Komponist / Composer)	Time	N° EMR Blasorchester Concert Band	N° EMR Brass Band
1	Die Schöne Galathée (Suppé)	6'37	EMR 12038	-
2	La Traviata (Verdi)	3'12	EMR 11875	-
3	Don Pasquale (Donizetti)	6'10	EMR 12024	-
4	The Queen Of Spades (Tchaikovsky)	3'37	EMR 11865	-
5	La Vie Parisienne (Offenbach)	5'18	EMR 11876	-
6	Coriolan (Beethoven)	7'37	EMR 11874	-
7	Giselle (Adam)	5'43	EMR 11993	-
8	Norma (Bellini)	5'54	EMR 12021	-
9	An American In Paris (Gershwin)	8'08	EMR 11926	EMR 9512

Zu bestellen bei • A commander chez • To be ordered from:

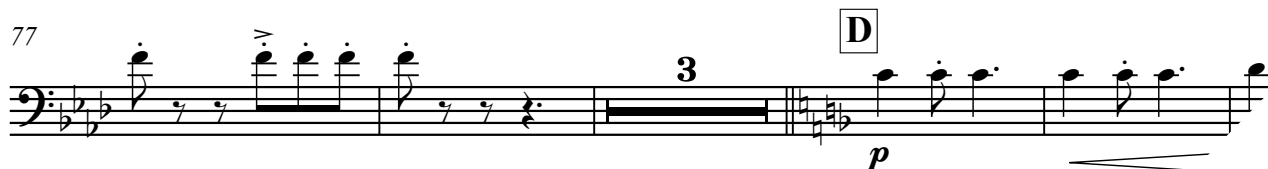
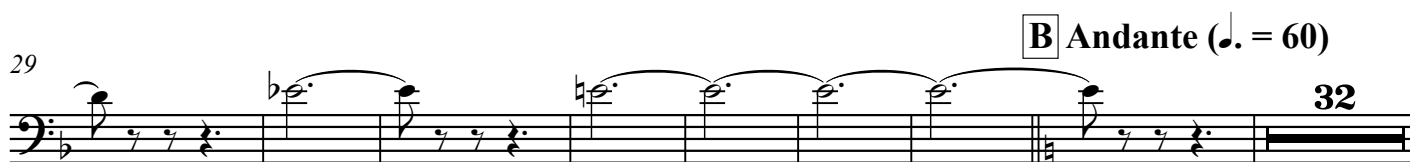
Editions Marc Reift • Route du Golf 150 • CH-3963 Crans-Montana (Switzerland) • Tel. +41 (0) 27 483 12 00 • Fax +41 (0) 27 483 42 43 • E-Mail: info@reift.ch • www.reift.ch

1st TROMBONE

Die schöne Galathée*The Beautiful Galatea*

Franz von Suppé

Arr.: John Glenesk Mortimer

Allegro $\text{♩} = 120$ Photocopying
is illegal!

1st TROMBONE

La Traviata

Prelude

Giuseppe Verdi

Arr.: John Glenesk Mortimer

Adagio ♩ = 66

Photocopying is illegal!

16 A 8 B

pp *pp*

30

36

p *pp*

43

p *pp*

EMR 31085

© COPYRIGHT BY EDITIONS MARC REIFT CH-3963 CRANS-MONTANA (SWITZERLAND)
ALL RIGHTS RESERVED - INTERNATIONAL COPYRIGHT SECURED

www.reift.ch

1st TROMBONE

Don Pasquale

Gaetano Donizetti

Arr.: John Glenesk Mortimer

Prestissimo $\text{♩} = 92-100$ Photocopying
is illegal!

ff

6 **A** **Andante** $\text{♩} = 72$ **poco rit.** **B** **a tempo** **C** **rit.**

15 2 6 5

pp *pp*

38 **D** **Poco più** $\text{♩} = 80$

3

f

Allegro moderato $\text{♩} = 126$ **a tempo** **rall.** **a tempo** **rall.** **a tempo** **F**

48 **E** 11 2 2 2 2 **rall.** **p**

69

74

f *p*

79 **G** **Vivo** $\text{♩} = 144-160$

ff

85

90

The Queen Of Spades

La Dame de Pique / Pique Dame

Prelude

Pyotr Ilyitch Tchaikovsky

Arr.: John Glenesk Mortimer

1st TROMBONE

Andante $\text{♩} = 72$

3

Photocopying
is illegal!

11

20 Same beat $\text{♩} = 72$

27

34

45

EMR 31085

© COPYRIGHT BY EDITIONS MARC REIFT CH-3963 CRANS-MONTANA (SWITZERLAND)
ALL RIGHTS RESERVED - INTERNATIONAL COPYRIGHT SECURED

www.reift.ch

1st TROMBONE

La Vie Parisienne

Jacques Offenbach

Arr.: John Glenesk Mortimer

Vivo ♩ = 152

Photocopying
is illegal!

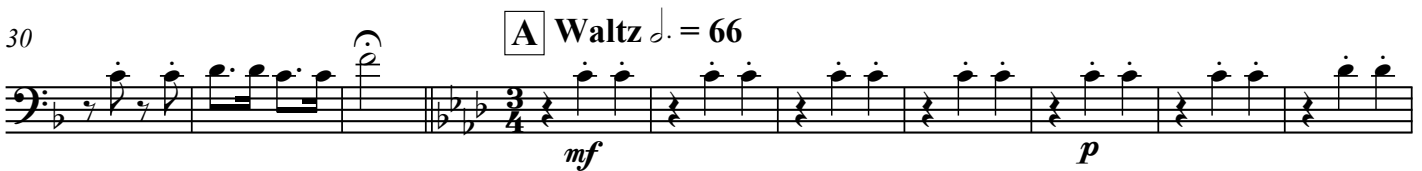
10



20



30



40



50



60



77



86



102



124



1st TROMBONE

Coriolan

Ludwig van Beethoven

Arr.: John Glenesk Mortimer

Allegro $\text{♩} = 88$

 Photocopying is illegal!

Musical score for 1st Trombone, starting with *ff* dynamics and *G.P.* (Grave) markings. The score includes measures 12, 29, 37, 52, 86, 95, 102, 112, 133, 143, and 154. Dynamics range from *p* to *ff*. Rehearsal marks A through G are present. Fingerings (2, 5, 6, 10, 11) and articulation (accents) are indicated.

1st TROMBONE

Giselle

Giselle's Entry / Waltz / Pas de deux / Galop

Adolphe Adam

Arr.: John Glenesk Mortimer

Allegro ♩ = 132

Photocopying is illegal!

Andante ♩ = 80 *Giselle's Entry* Allegretto ♩ = 92 *Waltz* ♩ = 172

6 **A** 17 **B** 6 **C** 25 **D** 18 **E** 15

91 **F**

101

Moderato ♩ = 108 *Pas de deux*

111 **G**

120

131 **H** Andante ♩ = 90

142

158 **I** Allegro ♩ = 132 *Galop*

191 **J**

208 **K** Più mosso

221

1st TROMBONE

Norma

Overture

Vincenzo Bellini

Arr.: John Glenesk Mortimer

Allegro ♩ = 132

Photocopying is illegal!

ff

6

ff *ff*

12

Lento ♩ = 72

A Allegro ♩ = 132

ff

19

24

ff

35

B 9

C 22

mf cresc. *ff*

72

D

ff

78

mf cresc.

1st TROMBONE

An American In Paris

George Gershwin

Arr.: John Glenesk Mortimer

Allegretto ♩ = 100

Photocopying is illegal!

10 A 9

24 B Più mosso ♩ = 120

32

4

44 C

4

57 D Allegro ♩ = 126

68 E Allegro ♩ = 126

molto rit. ♩ = 72 2

76

3 3

89 F

2

103 G Subito molto meno

Allegro ♩ = 126 3 4

114 Tranquillo ♩ = 116

5 4 rit.

Play The 1st.... With The Wind Orchestra

FAMOUS OVERTURES 2

**La Gazza Ladra (Rossini) – Romeo & Juliet (Tchaikovsky) – Egmont (Beethoven) – Dichter und Bauer (Suppé)
The Mastersingers (Wagner) – Der Schauspieldirektor (Mozart)**



EMR 31018	Play the 1 st Flute
EMR 31020	Play the 1 st Clarinet
EMR 31019	Play the 1 st Oboe
EMR 31021	Play the 1 st Alto Saxophone
EMR 31022	Play the 1 st Tenor Saxophone
EMR 31023	Play the 1 st Trumpet
EMR 31024	Play the 1 st F Horn
EMR 31025	Play the 1 st Trombone (♭)
EMR 31026	Play the 1 st Baritone (♩)
EMR 31027	Play the Tuba

FAMOUS OVERTURES 3

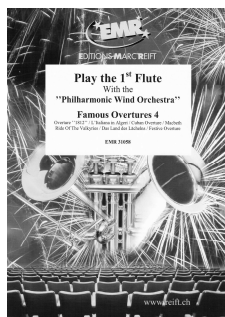
**Tancredi Overture (Rossini) – Prince Igor (Borodin) – Overture Il Seraglio (Mozart) – Tannhäuser (Wagner)
Prelude To Werther (Massenet) – The Messiah (Händel) – Rigoletto (Verdi) – Orphée Aux Enfers (Offenbach)**



EMR 31038	Play the 1 st Flute
EMR 31040	Play the 1 st Clarinet
EMR 31039	Play the 1 st Oboe
EMR 31041	Play the 1 st Alto Saxophone
EMR 31042	Play the 1 st Tenor Saxophone
EMR 31043	Play the 1 st Trumpet
EMR 31044	Play the 1 st F Horn
EMR 31045	Play the 1 st Trombone (♭)
EMR 31046	Play the 1 st Baritone (♩)
EMR 31047	Play the Tuba

FAMOUS OVERTURES 4

**Overture "1812" (Tchaikovsky) – L'Italiana in Algeri (Rossini) – Cuban Overture (Gershwin) – Macbeth (Verdi)
Ride Of The Valkyries (Wagner) – Das Land des Lächelns (Lehár) – Festive Overture (Shostakovich)**



EMR 31058	Play the 1 st Flute
EMR 31060	Play the 1 st Clarinet
EMR 31059	Play the 1 st Oboe
EMR 31061	Play the 1 st Alto Saxophone
EMR 31062	Play the 1 st Tenor Saxophone
EMR 31063	Play the 1 st Trumpet
EMR 31064	Play the 1 st F Horn
EMR 31065	Play the 1 st Trombone (♭)
EMR 31066	Play the 1 st Baritone (♩)
EMR 31067	Play the Tuba

FAMOUS OVERTURES 5

**Die Schöne Galathée (Suppé) – La Traviata (Verdi) – Don Pasquale (Donizetti) – The Queen Of Spades (Tchaikovsky)
La Vie Parisienne (Offenbach) – Coriolan (Beethoven) – Giselle (Adam) – Norma (Bellini) – An American In Paris (Gershwin)**



EMR 31078	Play the 1 st Flute
EMR 31080	Play the 1 st Clarinet
EMR 31079	Play the 1 st Oboe
EMR 31081	Play the 1 st Alto Saxophone
EMR 31082	Play the 1 st Tenor Saxophone
EMR 31083	Play the 1 st Trumpet
EMR 31084	Play the 1 st F Horn
EMR 31085	Play the 1 st Trombone (♭)
EMR 31086	Play the 1 st Baritone (♩)
EMR 31087	Play the Tuba