

# Play The 1<sup>st</sup> Alto Saxophone with the “Philharmonic Wind Orchestra”

## Famous Overtures 5

EMR 31081

- 1) Die Schöne Galathée (Suppé)
- 2) La Traviata (Verdi)
- 3) Don Pasquale (Donizetti)
- 4) The Queen Of Spades (Tchaikovsky)
- 5) La Vie Parisienne (Offenbach)
- 6) Coriolan (Beethoven)
- 7) Giselle (Adam)
- 8) Norma (Bellini)
- 9) An American In Paris (Gershwin)

**Print & Listen**  
**Drucken & Anhören**  
**Imprimer & Ecouter**



[www.reift.ch](http://www.reift.ch)



**EDITIONS MARC REIFT**

Route du Golf 150 • CH-3963 Crans-Montana (Switzerland)

Tel. +41 (0) 27 483 12 00 • Fax +41 (0) 27 483 42 43 • E-Mail : [info@reift.ch](mailto:info@reift.ch) • [www.reift.ch](http://www.reift.ch)

# DISCOGRAPHY



## Famous Overtures 5

Track N°	Titel / Title (Komponist / Composer)	Time	N° EMR Blasorchester Concert Band	N° EMR Brass Band
1	Die Schöne Galathée (Suppé)	6'37	EMR 12038	-
2	La Traviata (Verdi)	3'12	EMR 11875	-
3	Don Pasquale (Donizetti)	6'10	EMR 12024	-
4	The Queen Of Spades (Tchaikovsky)	3'37	EMR 11865	-
5	La Vie Parisienne (Offenbach)	5'18	EMR 11876	-
6	Coriolan (Beethoven)	7'37	EMR 11874	-
7	Giselle (Adam)	5'43	EMR 11993	-
8	Norma (Bellini)	5'54	EMR 12021	-
9	An American In Paris (Gershwin)	8'08	EMR 11926	EMR 9512

**Zu bestellen bei • A commander chez • To be ordered from:**

Editions Marc Reift • Route du Golf 150 • CH-3963 Crans-Montana (Switzerland) • Tel. +41 (0) 27 483 12 00 • Fax +41 (0) 27 483 42 43 • E-Mail: info@reift.ch • www.reift.ch

1st E♭ ALTO  
SAXOPHONE

# Die schöne Galathée

The Beautiful Galatea

Franz von Suppé

Arr.: John Glenesk Mortimer

Allegro ♩. = 120

Photocopying  
is illegal!

7

13

19 **A**

26

35 **B** Andante (♩. = 60)

53

62

1st E♭ ALTO  
SAXOPHONE

# La Traviata

## Prelude

Giuseppe Verdi

Arr.: John Glenesk Mortimer

Adagio ♩ = 66

Photocopying is illegal!

7 *pp* *cresc.* *mf* **A** 1 1

18 *p espr.* *p* *p* *pp* *p* *p* **B**

27 *mf* *mf* *f* *p* *m'*

36 *pp* *f* *p* *pp*

43 *p* *dim.* **r**

EMR 31081  
© COPYRIGHT BY EDITIONS MARC REIFT CH-3963 CRANS-MONTANA (SWITZERLAND)  
ALL RIGHTS RESERVED - INTERNATIONAL COPYRIGHT SECURED

[www.reit.ch](http://www.reit.ch)

1st E $\flat$  ALTO  
SAXOPHONE

# Don Pasquale

Gaetano Donizetti

Arr.: John Glenesk Mortimer

Prestissimo  $\text{♩} = 92-100$

Photocopying  
is illegal!



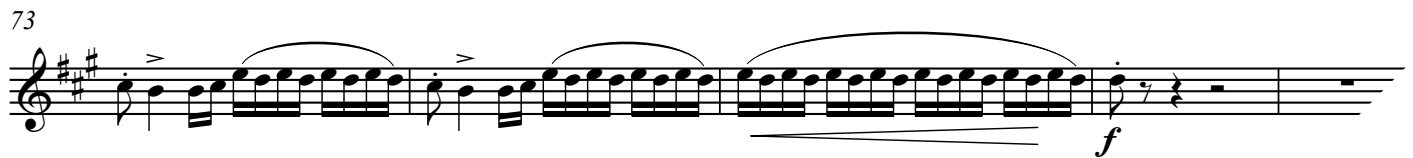
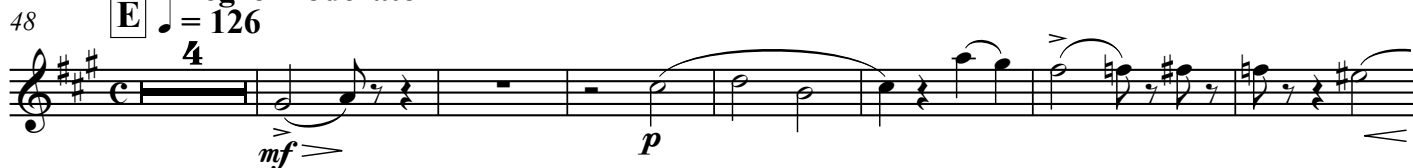
Andante  $\text{♩} = 72$



Poco più  $\text{♩} = 80$



Allegro moderato



# The Queen Of Spades

## La Dame de Pique / Pique Dame Prelude

Pyotr Ilyitch Tchaikovsky  
Arr.: John Glenesk Mortimer

1st E♭ ALTO  
SAXOPHONE

Andante ♩ = 72

Photocopying  
is illegal!

1

*pp* < > < > < > *p* *sost.* *mf*

9

*p* *f* *p* *ff*

A

18

Same beat ♩ = 72

*p* *f* *p* *ff* *p* *f*

3 3 3 3 3 3 3 3

26

*ff* 3 3 3 3 3 3 3 3

30

*p espr.* *cresc.*

3 3

B

39

*ff* *sf* *sf*

1st E♭ ALTO  
SAXOPHONE

## La Vie Parisienne

Jacques Offenbach

Arr.: John Glenesk Mortimer

Vivo ♩ = 152

Photocopying  
is illegal!

11



23



53



62



71



79



86



94



1st E $\flat$  ALTO  
SAXOPHONE

# Coriolan

Ludwig van Beethoven

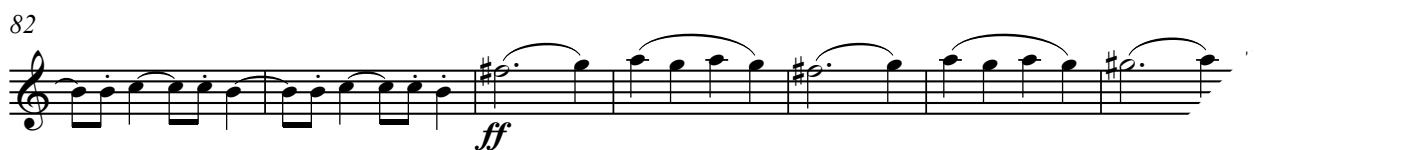
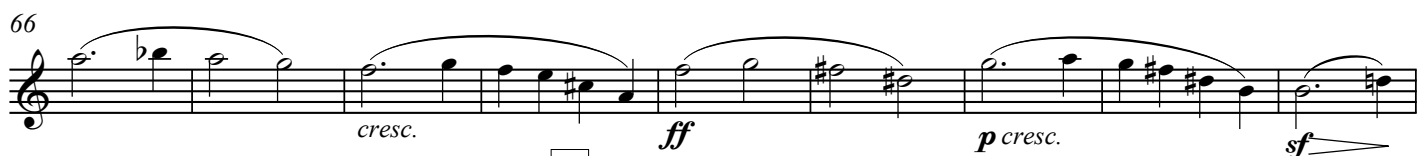
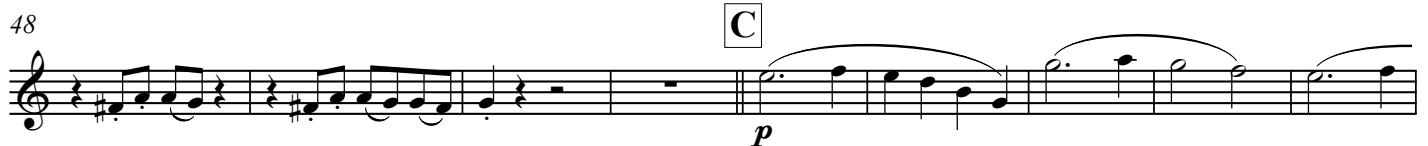
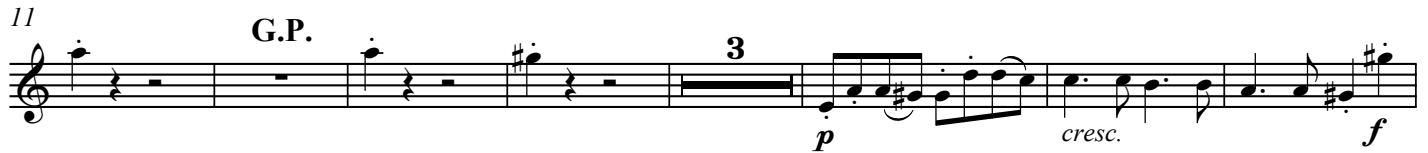
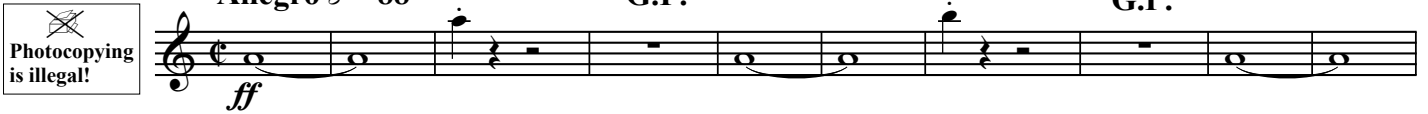
Arr.: John Glenesk Mortimer

 Photocopying  
is illegal!

Allegro  $\text{♩} = 88$

G.P.

G.P.



1st E♭ ALTO  
SAXOPHONE

# Giselle

Giselle's Entry / Waltz / Pas de deux / Galop

Adolphe Adam

Arr.: John Glenesk Mortimer

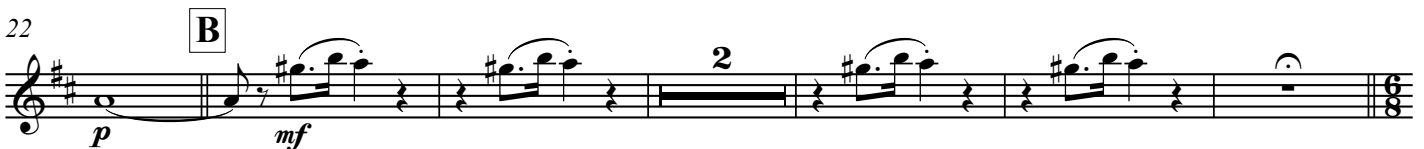
Allegro ♩ = 132

 Photocopying is illegal!



6 **A** Andante ♩ = 80 *Giselle's Entry*





30 **C** Allegretto ♩ = 92

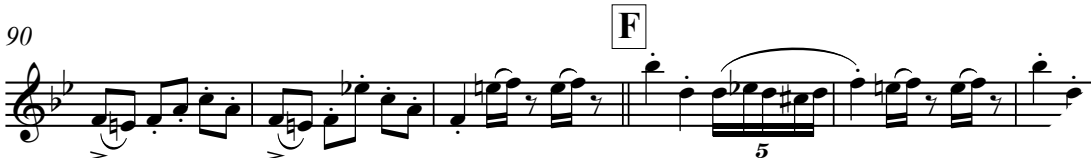




52 **D** Waltz ♩ = 172







1st E $\flat$  ALTO  
SAXOPHONE

# Norma

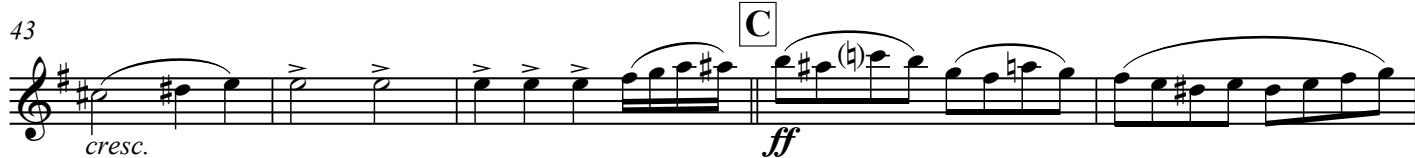
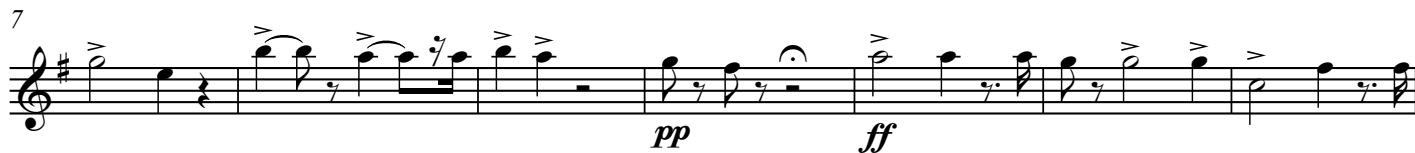
## Overture

Vincenzo Bellini

Arr.: John Glenesk Mortimer

Allegro  $\text{♩} = 132$

Photocopying  
is illegal!



1st E $\flat$  ALTO  
SAXOPHONE

## An American In Paris

George Gershwin

Arr.: John Glenesk Mortimer

Allegretto  $\text{♩} = 100$ 

Photocopying is illegal!

12 **A**

21 **B Più mosso**  $\text{♩} = 120$

31

42 **C**

52

60 **D** Allegro  $\text{♩} = 126$

70 **E** Allegro  $\text{♩} = 126$

78

89 **F**

97

103 **G** Subito molto meno  $\text{♩} = 80$

# Play The 1<sup>st</sup>.... With The Wind Orchestra

## FAMOUS OVERTURES 2

La Gazza Ladra (Rossini) – Romeo & Juliet (Tchaikovsky) – Egmont (Beethoven) – Dichter und Bauer (Suppé)  
The Mastersingers (Wagner) – Der Schauspieldirektor (Mozart)



EMR 31018	Play the 1 <sup>st</sup> Flute
EMR 31020	Play the 1 <sup>st</sup> Clarinet
EMR 31019	Play the 1 <sup>st</sup> Oboe
EMR 31021	Play the 1 <sup>st</sup> Alto Saxophone
EMR 31022	Play the 1 <sup>st</sup> Tenor Saxophone
EMR 31023	Play the 1 <sup>st</sup> Trumpet
EMR 31024	Play the 1 <sup>st</sup> F Horn
EMR 31025	Play the 1 <sup>st</sup> Trombone (♭)
EMR 31026	Play the 1 <sup>st</sup> Baritone (♩)
EMR 31027	Play the Tuba

## FAMOUS OVERTURES 3

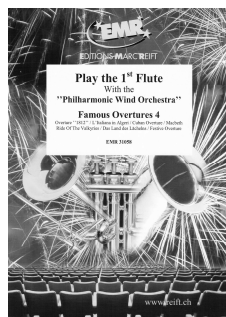
Tancredi Overture (Rossini) – Prince Igor (Borodin) – Overture Il Seraglio (Mozart) – Tannhäuser (Wagner)  
Prelude To Werther (Massenet) – The Messiah (Händel) – Rigoletto (Verdi) – Orphée Aux Enfers (Offenbach)



EMR 31038	Play the 1 <sup>st</sup> Flute
EMR 31040	Play the 1 <sup>st</sup> Clarinet
EMR 31039	Play the 1 <sup>st</sup> Oboe
EMR 31041	Play the 1 <sup>st</sup> Alto Saxophone
EMR 31042	Play the 1 <sup>st</sup> Tenor Saxophone
EMR 31043	Play the 1 <sup>st</sup> Trumpet
EMR 31044	Play the 1 <sup>st</sup> F Horn
EMR 31045	Play the 1 <sup>st</sup> Trombone (♭)
EMR 31046	Play the 1 <sup>st</sup> Baritone (♩)
EMR 31047	Play the Tuba

## FAMOUS OVERTURES 4

Overture "1812" (Tchaikovsky) – L'Italiana in Algeri (Rossini) – Cuban Overture (Gershwin) – Macbeth (Verdi)  
Ride Of The Valkyries (Wagner) – Das Land des Lächelns (Lehár) – Festive Overture (Shostakovich)



EMR 31058	Play the 1 <sup>st</sup> Flute
EMR 31060	Play the 1 <sup>st</sup> Clarinet
EMR 31059	Play the 1 <sup>st</sup> Oboe
EMR 31061	Play the 1 <sup>st</sup> Alto Saxophone
EMR 31062	Play the 1 <sup>st</sup> Tenor Saxophone
EMR 31063	Play the 1 <sup>st</sup> Trumpet
EMR 31064	Play the 1 <sup>st</sup> F Horn
EMR 31065	Play the 1 <sup>st</sup> Trombone (♭)
EMR 31066	Play the 1 <sup>st</sup> Baritone (♩)
EMR 31067	Play the Tuba

## FAMOUS OVERTURES 5

Die Schöne Galathée (Suppé) – La Traviata (Verdi) – Don Pasquale (Donizetti) – The Queen Of Spades (Tchaikovsky)  
La Vie Parisienne (Offenbach) – Coriolan (Beethoven) – Giselle (Adam) – Norma (Bellini) – An American In Paris (Gershwin)



EMR 31078	Play the 1 <sup>st</sup> Flute
EMR 31080	Play the 1 <sup>st</sup> Clarinet
EMR 31079	Play the 1 <sup>st</sup> Oboe
EMR 31081	Play the 1 <sup>st</sup> Alto Saxophone
EMR 31082	Play the 1 <sup>st</sup> Tenor Saxophone
EMR 31083	Play the 1 <sup>st</sup> Trumpet
EMR 31084	Play the 1 <sup>st</sup> F Horn
EMR 31085	Play the 1 <sup>st</sup> Trombone (♭)
EMR 31086	Play the 1 <sup>st</sup> Baritone (♩)
EMR 31087	Play the Tuba