

# Play The 1<sup>st</sup> Oboe with the “Philharmonic Wind Orchestra”

## Famous Overtures 5

EMR 31079

- 1) Die Schöne Galathée (Suppé)
- 2) La Traviata (Verdi)
- 3) Don Pasquale (Donizetti)
- 4) The Queen Of Spades (Tchaikovsky)
- 5) La Vie Parisienne (Offenbach)
- 6) Coriolan (Beethoven)
- 7) Giselle (Adam)
- 8) Norma (Bellini)
- 9) An American In Paris (Gershwin)

**Print & Listen**  
**Drucken & Anhören**  
**Imprimer & Ecouter**



[www.reift.ch](http://www.reift.ch)



**EDITIONS MARC REIFT**

Route du Golf 150 • CH-3963 Crans-Montana (Switzerland)

Tel. +41 (0) 27 483 12 00 • Fax +41 (0) 27 483 42 43 • E-Mail : [info@reift.ch](mailto:info@reift.ch) • [www.reift.ch](http://www.reift.ch)

# DISCOGRAPHY



## Famous Overtures 5

Track N°	Titel / Title (Komponist / Composer)	Time	N° EMR Blsorchester Concert Band	N° EMR Brass Band
1	Die Schöne Galathée (Suppé)	6'37	EMR 12038	-
2	La Traviata (Verdi)	3'12	EMR 11875	-
3	Don Pasquale (Donizetti)	6'10	EMR 12024	-
4	The Queen Of Spades (Tchaikovsky)	3'37	EMR 11865	-
5	La Vie Parisienne (Offenbach)	5'18	EMR 11876	-
6	Coriolan (Beethoven)	7'37	EMR 11874	-
7	Giselle (Adam)	5'43	EMR 11993	-
8	Norma (Bellini)	5'54	EMR 12021	-
9	An American In Paris (Gershwin)	8'08	EMR 11926	EMR 9512

**Zu bestellen bei • A commander chez • To be ordered from:**

Editions Marc Reift • Route du Golf 150 • CH-3963 Crans-Montana (Switzerland) • Tel. +41 (0) 27 483 12 00 • Fax +41 (0) 27 483 42 43 • E-Mail: info@reift.ch • www.reift.ch

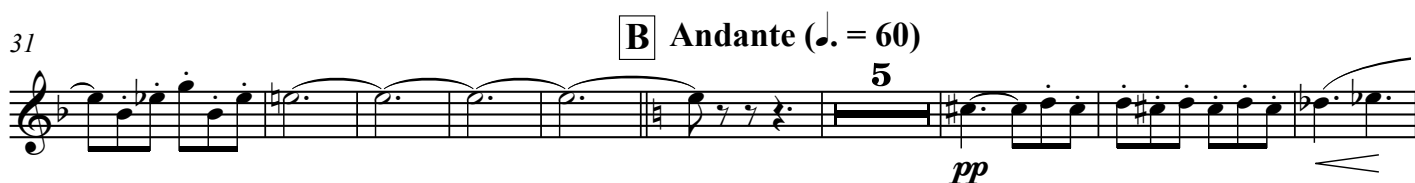
OBOE

## Die schöne Galathée

The Beautiful Galatea

Franz von Suppé

Arr.: John Glenesk Mortimer

Allegro  $\text{♩} = 120$ Photocopying  
is illegal!

OBOE

# La Traviata

## Prelude

Giuseppe Verdi

Arr.: John Glenesk Mortimer

Adagio ♩ = 66

Photocopying is illegal!

12 A 1

*pp cresc. mf f p espr.*

20 B 10

*p p pp p pp*

37

*p pp p*

44 dim. pp

*dim. pp*

EMR 31079  
 © COPYRIGHT BY EDITIONS MARC REIFT CH-3963 CRANS-MONTANA (SWITZERLAND)  
 ALL RIGHTS RESERVED - INTERNATIONAL COPYRIGHT SECURED

www.reift.ch

OBOE

## Don Pasquale

Gaetano Donizetti

Arr.: John Glenesk Mortimer

Photocopying  
is illegal!

Prestissimo  $\text{♩} = 92-100$ Andante  $\text{♩} = 72$ 

a tempo

poco  
rit.

rit.

D Poco più  $\text{♩} = 80$ 

Allegro moderato

 $\text{♩} = 126$ 

rall.

a tempo

rall.

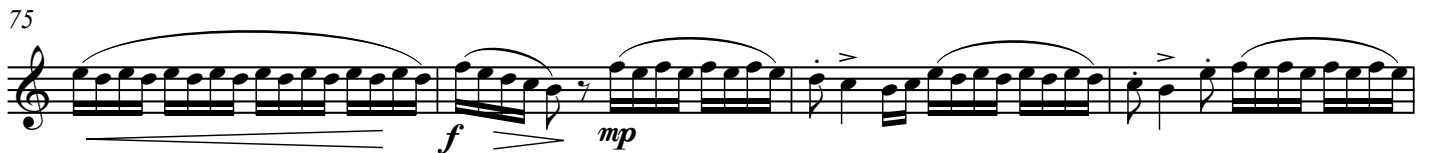
a tempo



a tempo

rall.

F



EMR 31079

© COPYRIGHT BY EDITIONS MARC REIFT CH-3963 CRANS-MONTANA (SWITZERLAND)  
ALL RIGHTS RESERVED - INTERNATIONAL COPYRIGHT SECURED

www.reift.ch



OBOE

# La Vie Parisienne

Jacques Offenbach

Arr.: John Glenesk Mortimer

Vivo ♩ = 152

Photocopying  
is illegal!



12



23



33

**A** Waltz ♩ = 66

**B**

19



59



67



75

**C**

81



88



OBOE

## Coriolan

Ludwig van Beethoven

Arr.: John Glenesk Mortimer

Allegro  $\text{♩} = 88$ 

 Photocopying is illegal!

2 *ff* G.P. 2 G.P. 2

12 G.P. 3 *p* *cresc.* *f* G.P.

22 **A** 4 *p cresc.* *f* G.P. *p cresc.*

33 **B** *ff* *sf* *sf*

42 *sf* *sf* *sf* *sf* *sf* *sf* *sf* *sf* *sf* *sf* *sf* *sf*

52 **C** 4 *p* *cresc.* *ff* *p*

65 *cresc.* *ff* *p cresc.*

74 **D** *sf* *p* *pp* *cresc.*

82 *ff*

91 *sf* *sf* *sf* *sf*

98 **E**

OBOE

## Giselle

Giselle's Entry / Waltz / Pas de deux / Galop

Adolphe Adam

Arr.: John Glenesk Mortimer

~~Photocopying is illegal!~~

**Allegro** ♩ = 132

*ff*

6 **A** **Andante** ♩ = 80 *Giselle's Entry*

*mf*

2

2

16

22 **B**

2

30 **C** **Allegretto** ♩ = 92

*p*

36

8

*p*

50 **D** **Waltz** ♩ = 172

*ff sub.*

*mp*

57

65

73 **E**

11

solo

tutti

*ff*

91 **F**

99

OBOE

# Norma

## Overture

Vincenzo Bellini

Arr.: John Glenesk Mortimer

Allegro ♩ = 132

Photocopying is illegal!

14 Lento ♩ = 72 **A** Allegro ♩ = 132

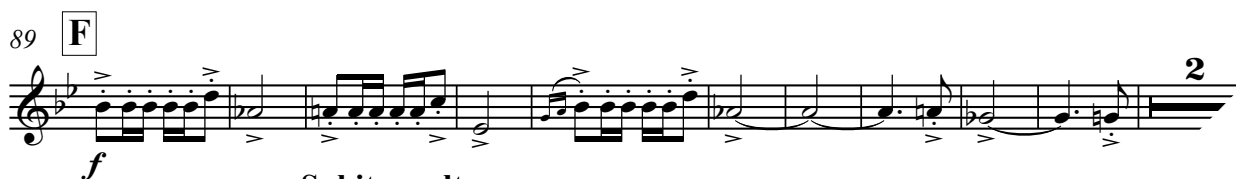
**D**

OBOE

## An American In Paris

George Gershwin

Arr.: John Glenesk Mortimer

Allegretto  $\text{♩} = 100$ Photocopying  
is illegal!

# Play The 1<sup>st</sup>.... With The Wind Orchestra

## FAMOUS OVERTURES 2

La Gazza Ladra (Rossini) – Romeo & Juliet (Tchaikovsky) – Egmont (Beethoven) – Dichter und Bauer (Suppé)  
The Mastersingers (Wagner) – Der Schauspieldirektor (Mozart)



EMR 31018	Play the 1 <sup>st</sup> Flute
EMR 31020	Play the 1 <sup>st</sup> Clarinet
EMR 31019	Play the 1 <sup>st</sup> Oboe
EMR 31021	Play the 1 <sup>st</sup> Alto Saxophone
EMR 31022	Play the 1 <sup>st</sup> Tenor Saxophone
EMR 31023	Play the 1 <sup>st</sup> Trumpet
EMR 31024	Play the 1 <sup>st</sup> F Horn
EMR 31025	Play the 1 <sup>st</sup> Trombone (♭)
EMR 31026	Play the 1 <sup>st</sup> Baritone (♩)
EMR 31027	Play the Tuba

## FAMOUS OVERTURES 3

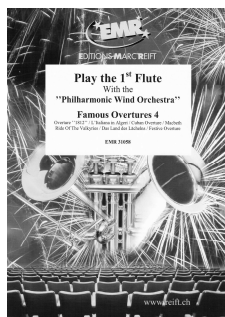
Tancredi Overture (Rossini) – Prince Igor (Borodin) – Overture Il Seraglio (Mozart) – Tannhäuser (Wagner)  
Prelude To Werther (Massenet) – The Messiah (Händel) – Rigoletto (Verdi) – Orphée Aux Enfers (Offenbach)



EMR 31038	Play the 1 <sup>st</sup> Flute
EMR 31040	Play the 1 <sup>st</sup> Clarinet
EMR 31039	Play the 1 <sup>st</sup> Oboe
EMR 31041	Play the 1 <sup>st</sup> Alto Saxophone
EMR 31042	Play the 1 <sup>st</sup> Tenor Saxophone
EMR 31043	Play the 1 <sup>st</sup> Trumpet
EMR 31044	Play the 1 <sup>st</sup> F Horn
EMR 31045	Play the 1 <sup>st</sup> Trombone (♭)
EMR 31046	Play the 1 <sup>st</sup> Baritone (♩)
EMR 31047	Play the Tuba

## FAMOUS OVERTURES 4

Overture "1812" (Tchaikovsky) – L'Italiana in Algeri (Rossini) – Cuban Overture (Gershwin) – Macbeth (Verdi)  
Ride Of The Valkyries (Wagner) – Das Land des Lächels (Lehár) – Festive Overture (Shostakovich)



EMR 31058	Play the 1 <sup>st</sup> Flute
EMR 31060	Play the 1 <sup>st</sup> Clarinet
EMR 31059	Play the 1 <sup>st</sup> Oboe
EMR 31061	Play the 1 <sup>st</sup> Alto Saxophone
EMR 31062	Play the 1 <sup>st</sup> Tenor Saxophone
EMR 31063	Play the 1 <sup>st</sup> Trumpet
EMR 31064	Play the 1 <sup>st</sup> F Horn
EMR 31065	Play the 1 <sup>st</sup> Trombone (♭)
EMR 31066	Play the 1 <sup>st</sup> Baritone (♩)
EMR 31067	Play the Tuba

## FAMOUS OVERTURES 5

Die Schöne Galathée (Suppé) – La Traviata (Verdi) – Don Pasquale (Donizetti) – The Queen Of Spades (Tchaikovsky)  
La Vie Parisienne (Offenbach) – Coriolan (Beethoven) – Giselle (Adam) – Norma (Bellini) – An American In Paris (Gershwin)



EMR 31078	Play the 1 <sup>st</sup> Flute
EMR 31080	Play the 1 <sup>st</sup> Clarinet
EMR 31079	Play the 1 <sup>st</sup> Oboe
EMR 31081	Play the 1 <sup>st</sup> Alto Saxophone
EMR 31082	Play the 1 <sup>st</sup> Tenor Saxophone
EMR 31083	Play the 1 <sup>st</sup> Trumpet
EMR 31084	Play the 1 <sup>st</sup> F Horn
EMR 31085	Play the 1 <sup>st</sup> Trombone (♭)
EMR 31086	Play the 1 <sup>st</sup> Baritone (♩)
EMR 31087	Play the Tuba