

# Play The Tuba with the “Philharmonic Wind Orchestra”

## Famous Overtures 4

EMR 31067

- 1) Overture “1812” (Tchaikovsky)
- 2) L’Italiana in Algeri (Rossini)
- 3) Cuban Overture (Gershwin)
- 4) Macbeth (Verdi)
- 5) Ride Of The Valkyries (Wagner)
- 6) Das Land des Lächelns (Lehár)
- 7) Festive Overture (Shostakovich)

**Print & Listen  
Drucken & Anhören  
Imprimer & Ecouter**



[www.reift.ch](http://www.reift.ch)



**EDITIONS MARC REIFT**

Route du Golf 150 • CH-3963 Crans-Montana (Switzerland)

Tel. +41 (0) 27 483 12 00 • Fax +41 (0) 27 483 42 43 • E-Mail : [info@reift.ch](mailto:info@reift.ch) • [www.reift.ch](http://www.reift.ch)

# DISCOGRAPHY



## Famous Overtures 4

Track N°	Titel / Title (Komponist / Composer)	Time	N° EMR Blasorchester Concert Band	N° EMR Brass Band
1	Overture "1812" (Tchaikovsky)	10'43	EMR 1085	-
2	L'Italiana in Algeri (Rossini)	7'49	EMR 11867	-
3	Cuban Overture (Gershwin)	10'18	EMR 11846	-
4	Macbeth (Verdi)	3'12	EMR 12023	-
5	Ride Of The Valkyries (Wagner)	4'48	EMR 11905	EMR 9557
6	Das Land des Lächelns (Lehár)	7'41	EMR 11870	EMR 9510
7	Festive Overture (Shostakovich)	5'53	EMR 11854	-

**Zu bestellen bei • A commander chez • To be ordered from:**

Editions Marc Reift • Route du Golf 150 • CH-3963 Crans-Montana (Switzerland) • Tel. +41 (0) 27 483 12 00 • Fax +41 (0) 27 483 42 43 • E-Mail: info@reift.ch • www.reift.ch

## Overture "1812"

BASSES in C

Piotr Ilyitch Tchaikovsky

(1840 - 1893)

arr.: John Glenesk Mortimer

Largo  $\text{♩} = 60$ 

Eb Bass = low W.W.



7

13

19

35

53

57

62

67

72

81

**(A)** 10 **(B)**

**(C)** 8 3 3

**(D)** POCO STRING.....

**(E)**

**(F)** 5

*p* *mf* *f* *ff* *fff* *cresc.* *mf* *ff* *mf*

POCO PIU MOSSO

Andante  $\text{♩} = 80$

EMR 31067

TUBA in C

# L'Italiana in Algeri

*L'Italienne à Alger / The Italian Girl in Algiers*

Gioacchino Rossini

Arr.: John Glenesk Mortimer

Andante ♩ = 80

Photocopying  
is illegal!

8



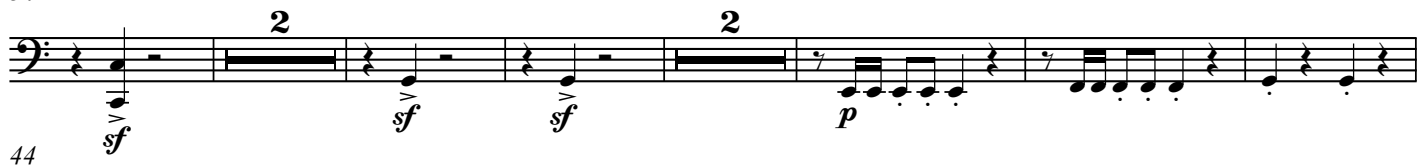
16



24



34



44



50



55



61



67



72



sfp cresc.

EMR 31067



TUBA in C

# Macbeth

Giuseppe Verdi

Prelude

Arr.: John Glenesk Mortimer

Moderato ♩ = 72

A Adagio ♩ = 60

Photocopying is illegal!

9

15

23

31

36

43

rit.

ff

f

ff

pp

cresc.

pp

G.P.

D 2

EMR 31067

© COPYRIGHT BY EDITIONS MARC REIFT CH-3963 CRANS-MONTANA (SWITZERLAND)  
ALL RIGHTS RESERVED - INTERNATIONAL COPYRIGHT SECURED

www.reift.ch

# Ride Of The Valkyries

*Walkürenritt - Chevauchée des Valkyries*

Richard Wagner

Arr.: John Glenesk Mortimer

TUBA in C

Vivace  $\text{♩} = 100$

Photocopying  
is illegal!

4

10 *mf* **A**

16

23 **B**

29 *f*

35 *f* **C**

41 *mf* **D**

48 *f* *fp* *fp* *f*

57 **E**

64 *p cresc.* *ff* **F**

70

76 **G**

3

**Das Land des Lächelns***The Land Of Smiles / Le pays du sourire***Overture****Franz Lehár**

Arr.: John Glenesk Mortimer

**TUBA in C**

 Photocopying is illegal!

**Maestoso** ♩ = 72

10

**meno** ♩ = 60    **a tempo** ♩ = 72

25

**A** **Moderato** ♩ = 84

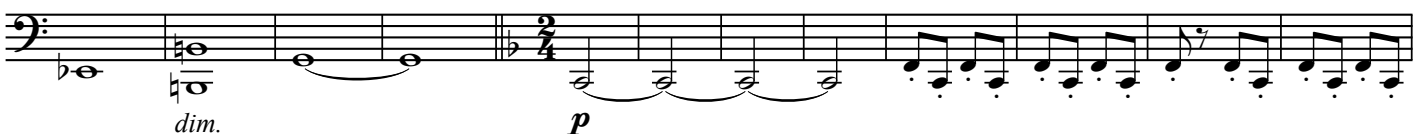
34



46

**rit.** ♩ = 72**Poco con moto** ♩ = 887 **C** **Animato** ♩ = 96

62

**rall.****D** **Allegro** ♩ = 120

74



84

**E**

94



EMR 31067

TUBA in C

# Festive Overture

Dmitri Shostakovich

Arr.: John Glenesk Mortimer

Allegro moderato ♩ = 120

Photocopying is illegal!

4 3 **A**

15

25

rit. **B** Presto ♩ = 148

33

**C**

41

48

55

**D**

63

71

**E**

78

EMR 31067

# Play The 1<sup>st</sup>.... With The Wind Orchestra

## FAMOUS OVERTURES 2

La Gazza Ladra (Rossini) – Romeo & Juliet (Tchaikovsky) – Egmont (Beethoven) – Dichter und Bauer (Suppé)  
The Mastersingers (Wagner) – Der Schauspieldirektor (Mozart)



EMR 31018	Play the 1 <sup>st</sup> Flute
EMR 31020	Play the 1 <sup>st</sup> Clarinet
EMR 31019	Play the 1 <sup>st</sup> Oboe
EMR 31021	Play the 1 <sup>st</sup> Alto Saxophone
EMR 31022	Play the 1 <sup>st</sup> Tenor Saxophone
EMR 31023	Play the 1 <sup>st</sup> Trumpet
EMR 31024	Play the 1 <sup>st</sup> F Horn
EMR 31025	Play the 1 <sup>st</sup> Trombone (♭)
EMR 31026	Play the 1 <sup>st</sup> Baritone (♩)
EMR 31027	Play the Tuba

## FAMOUS OVERTURES 3

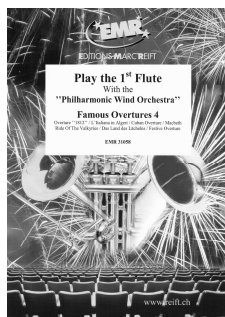
Tancredi Overture (Rossini) – Prince Igor (Borodin) – Overture Il Seraglio (Mozart) – Tannhäuser (Wagner)  
Prelude To Werther (Massenet) – The Messiah (Händel) – Rigoletto (Verdi) – Orphée Aux Enfers (Offenbach)



EMR 31038	Play the 1 <sup>st</sup> Flute
EMR 31040	Play the 1 <sup>st</sup> Clarinet
EMR 31039	Play the 1 <sup>st</sup> Oboe
EMR 31041	Play the 1 <sup>st</sup> Alto Saxophone
EMR 31042	Play the 1 <sup>st</sup> Tenor Saxophone
EMR 31043	Play the 1 <sup>st</sup> Trumpet
EMR 31044	Play the 1 <sup>st</sup> F Horn
EMR 31045	Play the 1 <sup>st</sup> Trombone (♭)
EMR 31046	Play the 1 <sup>st</sup> Baritone (♩)
EMR 31047	Play the Tuba

## FAMOUS OVERTURES 4

Overture "1812" (Tchaikovsky) – L'Italiana in Algeri (Rossini) – Cuban Overture (Gershwin) – Macbeth (Verdi)  
Ride Of The Valkyries (Wagner) – Das Land des Lächelns (Lehár) – Festive Overture (Shostakovich)



EMR 31058	Play the 1 <sup>st</sup> Flute
EMR 31060	Play the 1 <sup>st</sup> Clarinet
EMR 31059	Play the 1 <sup>st</sup> Oboe
EMR 31061	Play the 1 <sup>st</sup> Alto Saxophone
EMR 31062	Play the 1 <sup>st</sup> Tenor Saxophone
EMR 31063	Play the 1 <sup>st</sup> Trumpet
EMR 31064	Play the 1 <sup>st</sup> F Horn
EMR 31065	Play the 1 <sup>st</sup> Trombone (♭)
EMR 31066	Play the 1 <sup>st</sup> Baritone (♩)
EMR 31067	Play the Tuba

## FAMOUS OVERTURES 5

Die Schöne Galathée (Suppé) – La Traviata (Verdi) – Don Pasquale (Donizetti) – The Queen Of Spades (Tchaikovsky)  
La Vie Parisienne (Offenbach) – Coriolan (Beethoven) – Giselle (Adam) – Norma (Bellini) – An American In Paris (Gershwin)



EMR 31078	Play the 1 <sup>st</sup> Flute
EMR 31080	Play the 1 <sup>st</sup> Clarinet
EMR 31079	Play the 1 <sup>st</sup> Oboe
EMR 31081	Play the 1 <sup>st</sup> Alto Saxophone
EMR 31082	Play the 1 <sup>st</sup> Tenor Saxophone
EMR 31083	Play the 1 <sup>st</sup> Trumpet
EMR 31084	Play the 1 <sup>st</sup> F Horn
EMR 31085	Play the 1 <sup>st</sup> Trombone (♭)
EMR 31086	Play the 1 <sup>st</sup> Baritone (♩)
EMR 31087	Play the Tuba