

Play The 1st Oboe with the “Philharmonic Wind Orchestra”

Famous Overtures 2

EMR 31019

- 1) La Gazza Ladra (Rossini)
- 2) Romeo & Juliet (Tchaikovsky)
- 3) Egmont (Beethoven)
- 4) Dichter und Bauer (Suppé)
- 5) The Mastersingers (Wagner)
- 6) Der Schauspieldirektor (Mozart)

**Print & Listen
Drucken & Anhören
Imprimer & Ecouter**



www.reift.ch



EDITIONS MARC REIFT

Route du Golf 150 • CH-3963 Crans-Montana (Switzerland)

Tel. +41 (0) 27 483 12 00 • Fax +41 (0) 27 483 42 43 • E-Mail : info@reift.ch • www.reift.ch

DISCOGRAPHY



Famous Overtures 2

Track N°	Titel / Title (Komponist / Composer)	Time	N° EMR Blasorchester Concert Band	N° EMR Brass Band
1	La Gazza Ladra (Rossini)	9'23	EMR 11091	EMR 3835
2	Romeo & Juliet (Tchaikovsky)	17'55	EMR 11099	EMR 3836
3	Egmont (Beethoven)	7'42	EMR 11087	EMR 3837
4	Dichter und Bauer (Suppé)	9'31	EMR 10959	EMR 3838
5	The Mastersingers (Wagner)	9'51	EMR 11125	EMR 3839
6	Der Schauspieldirektor (Mozart)	5'58	EMR 10319	EMR 3479

Zu bestellen bei • A commander chez • To be ordered from:

Editions Marc Reift • Route du Golf 150 • CH-3963 Crans-Montana (Switzerland) • Tel. +41 (0) 27 483 12 00 • Fax +41 (0) 27 483 42 43 • E-Mail: info@reift.ch • www.reift.ch

OBOE

La Gazza Ladra

The Thieving Magpie - La Pie Voleuse - Der Diebische Elster

Gioacchino Rossini

Arr.: John Glenesk Mortimer

Marziale ♩ = 112

 Photocopying is illegal!



Musical staff 1, measures 1-6. Includes trills, accents, and a forte (f) dynamic marking.



Musical staff 2, measures 7-12. Includes trills, accents, and triplet markings.



Musical staff 3, measures 13-18. Includes trills, accents, and a forte (f) dynamic marking. Section A is marked.



Musical staff 4, measures 19-24. Includes trills, accents, and a forte (f) dynamic marking. Section B is marked.



Musical staff 5, measures 25-30. Includes trills, accents, and a forte (f) dynamic marking.



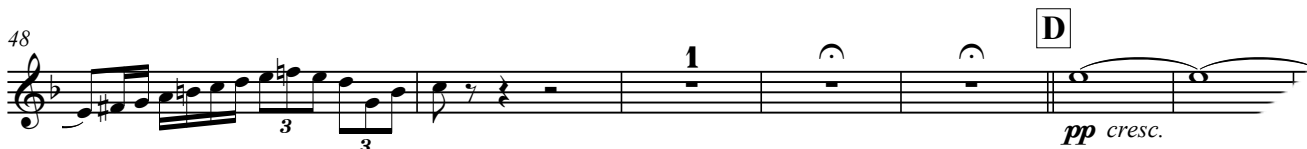
Musical staff 6, measures 31-36. Includes trills, accents, and a forte (f) dynamic marking. Section C is marked.



Musical staff 7, measures 37-42. Includes trills, accents, and a forte (f) dynamic marking.



Musical staff 8, measures 43-47. Includes trills, accents, and a forte (f) dynamic marking.



Musical staff 9, measures 48-55. Includes trills, accents, and a piano (pp) dynamic marking with a crescendo (cresc.) instruction. Section D is marked.



Musical staff 10, measures 56-61. Includes trills, accents, and a fortissimo (ff) dynamic marking. Section E is marked.

Allegro vivo ♩ = 148



Musical staff 11, measures 62-67. Includes trills, accents, and a fortissimo (ff) dynamic marking. Section F is marked.

OBOE

Romeo & Juliet

Pyotr Ilyitch Tchaikovsky

Arr.: John Glenesk Mortimer

Photocopying
is illegal!

Moderato ♩ = 96

A 20 *pp* *poco a poco cresc.* *mf*

30 *p* **B** 3 *p*

43 *mf* *p*

52 **C** 9 *p* *poco a poco cresc.* *mf* *p*

72 **D** *Poco a poco stringendo* 3 *mf* 3 *f* *cresc.*

87 **E** **Allegro** ♩ = 132 *ff*

96 **Meno mosso** ♩ = 108 *p* 4 3 *pp* *stringendo* 1 *cresc.*

111 **F** **Allegro** ♩ = 132 *f*

117 **G**

123 *mf*

128

134 **H** *f*

140

OBOE

Egmont

Ludwig van Beethoven

Arr.: John Glenesk Mortimer

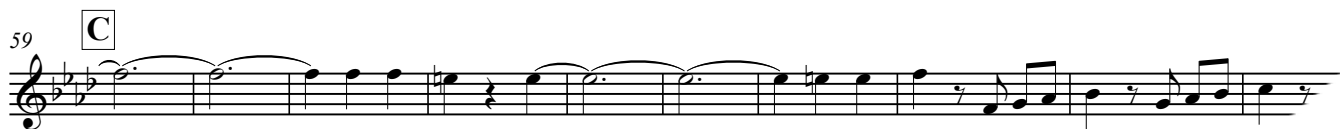
Sostenuto (in 6) ♩ = 100


 Photocopying is illegal!









OBOE

Dichter und Bauer

Poète et Paysan / Poet and Peasant

Franz von Suppé

Arr.: Jérôme Naulais

Andante maestoso ♩ = 76

 Photocopying is illegal!

8 *p* 1 *ff* 3 3 3 *p* 5

22 *rall.* *A tempo* *A tempo* *p* 3 3 3 3 3 3 3 3 3 3 3 3 1 *p* 3 3 3 3 3 3 3 3

37 *mf* 5 6 3 *ff* *Allegro* ♩ = 144

60 *ff* 3

71 *ff* 1 1 *ff* *f*

82 *f* *p* *cresc.*

95 *ff* 1 1 *ff*

110 *f* 1. 2. *ff*

123 *p* *ff* *p*

135 *cresc.* *mp* *cresc.* *mf* *p* *mp* *rall.* *Allegretto* ♩ = 66

149 *mf*

166 *rall.* *A tempo* *mp* *mf*

OBOE

The Mastersingers

Richard Wagner

Arr.: John Glenesk Mortimer

Moderato ♩ = 112

~~Photocopying is illegal!~~

sost.
f

9 **A**
 3
mf *cresc.* *ff*

19 *tr*

27 **B**
f *mp* *f*

38 **C**

44 6

54 **D**
tr *tr* *tr* *ff*

62 *f*

70

78 **E**
ff

86 *tr* *poco rit.*

93 3

Der Schauspieldirektor

OBOE

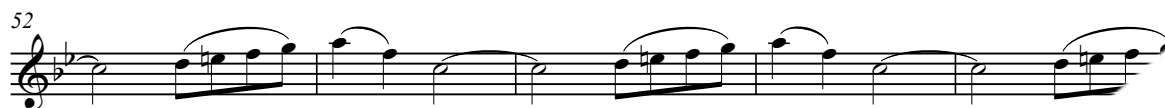
Le Directeur de Théâtre / L'Impresario

Wolfgang Amadeus Mozart

Arr.: Jérôme Naulais

Allegro Moderato $\text{♩} = 76$

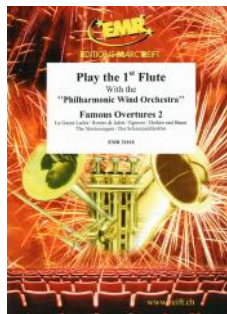
~~Photocopying~~
is illegal!



Play The 1st.... With The Wind Orchestra

FAMOUS OVERTURES 2

La Gazza Ladra (Rossini) – Romeo & Juliet (Tchaikovsky) – Egmont (Beethoven) – Dichter und Bauer (Suppé)
The Mastersingers (Wagner) – Der Schauspieldirektor (Mozart)



EMR 31018	Play the 1 st Flute
EMR 31020	Play the 1 st Clarinet
EMR 31019	Play the 1 st Oboe
EMR 31021	Play the 1 st Alto Saxophone
EMR 31022	Play the 1 st Tenor Saxophone
EMR 31023	Play the 1 st Trumpet
EMR 31024	Play the 1 st F Horn
EMR 31025	Play the 1 st Trombone (♭)
EMR 31026	Play the 1 st Baritone (♩)
EMR 31027	Play the Tuba

FAMOUS OVERTURES 3

Tancredi Overture (Rossini) – Prince Igor (Borodin) – Overture Il Seraglio (Mozart) – Tannhäuser (Wagner)
Prelude To Werther (Massenet) – The Messiah (Händel) – Rigoletto (Verdi) – Orphée Aux Enfers (Offenbach)



EMR 31038	Play the 1 st Flute
EMR 31040	Play the 1 st Clarinet
EMR 31039	Play the 1 st Oboe
EMR 31041	Play the 1 st Alto Saxophone
EMR 31042	Play the 1 st Tenor Saxophone
EMR 31043	Play the 1 st Trumpet
EMR 31044	Play the 1 st F Horn
EMR 31045	Play the 1 st Trombone (♭)
EMR 31046	Play the 1 st Baritone (♩)
EMR 31047	Play the Tuba

FAMOUS OVERTURES 4

Overture "1812" (Tchaikovsky) – L'Italiana in Algeri (Rossini) – Cuban Overture (Gershwin) – Macbeth (Verdi)
Ride Of The Valkyries (Wagner) – Das Land des Lächelns (Lehár) – Festive Overture (Shostakovich)



EMR 31058	Play the 1 st Flute
EMR 31060	Play the 1 st Clarinet
EMR 31059	Play the 1 st Oboe
EMR 31061	Play the 1 st Alto Saxophone
EMR 31062	Play the 1 st Tenor Saxophone
EMR 31063	Play the 1 st Trumpet
EMR 31064	Play the 1 st F Horn
EMR 31065	Play the 1 st Trombone (♭)
EMR 31066	Play the 1 st Baritone (♩)
EMR 31067	Play the Tuba

FAMOUS OVERTURES 5

Die Schöne Galathée (Suppé) – La Traviata (Verdi) – Don Pasquale (Donizetti) – The Queen Of Spades (Tchaikovsky)
La Vie Parisienne (Offenbach) – Coriolan (Beethoven) – Giselle (Adam) – Norma (Bellini) – An American In Paris (Gershwin)



EMR 31078	Play the 1 st Flute
EMR 31080	Play the 1 st Clarinet
EMR 31079	Play the 1 st Oboe
EMR 31081	Play the 1 st Alto Saxophone
EMR 31082	Play the 1 st Tenor Saxophone
EMR 31083	Play the 1 st Trumpet
EMR 31084	Play the 1 st F Horn
EMR 31085	Play the 1 st Trombone (♭)
EMR 31086	Play the 1 st Baritone (♩)
EMR 31087	Play the Tuba