

Play The 1st Alto Saxophone with the “Philharmonic Wind Orchestra”

Famous Overtures 2 + CD

EMR 31011

- 1) La Gazza Ladra (Rossini)
- 2) Romeo & Juliet (Tchaikovsky)
- 3) Egmont (Beethoven)
- 4) Dichter und Bauer (Suppé)
- 5) The Mastersingers (Wagner)
- 6) Der Schauspieldirektor (Mozart)

**Print & Listen
Drucken & Anhören
Imprimer & Ecouter**



www.reift.ch



EDITIONS MARC REIFT

Route du Golf 150 • CH-3963 Crans-Montana (Switzerland)

Tel. +41 (0) 27 483 12 00 • Fax +41 (0) 27 483 42 43 • E-Mail : info@reift.ch • www.reift.ch

DISCOGRAPHY



Famous Overtures 2

Track N°	Titel / Title (Komponist / Composer)	Time	N° EMR Blasorchester Concert Band	N° EMR Brass Band
1	La Gazza Ladra (Rossini)	9'23	EMR 11091	EMR 3835
2	Romeo & Juliet (Tchaikovsky)	17'55	EMR 11099	EMR 3836
3	Egmont (Beethoven)	7'42	EMR 11087	EMR 3837
4	Dichter und Bauer (Suppé)	9'31	EMR 10959	EMR 3838
5	The Mastersingers (Wagner)	9'51	EMR 11125	EMR 3839
6	Der Schauspieldirektor (Mozart)	5'58	EMR 10319	EMR 3479

Zu bestellen bei • A commander chez • To be ordered from:

Editions Marc Reift • Route du Golf 150 • CH-3963 Crans-Montana (Switzerland) • Tel. +41 (0) 27 483 12 00 • Fax +41 (0) 27 483 42 43 • E-Mail: info@reift.ch • www.reift.ch

1st E♭ ALTO
SAXOPHONE

La Gazza Ladra

The Thieving Magpie - La Pie Voleuse - Der Diebische Elster

Gioacchino Rossini

Arr.: John Glenesk Mortimer

Marziale ♩ = 112

 Photocopying
is illegal!



Allegro vivo ♩ = 148



1st E \flat ALTO
SAXOPHONE

Romeo & Juliet

Pyotr Ilyitch Tchaikovsky

Arr.: John Glenesk Mortimer

Photocopying
is illegal!

Moderato $\text{♩} = 96$

9 *p* *mf* *p* **A**

25 *p* *pp* poco a poco cresc.

38 **B** *p* *p* *mf*

47 *p* *p* **C**

62 *poco a poco cresc.* *mf* *p* *pp*

75 **D** Poco a poco stringendo *mf*

86 **E** Allegro $\text{♩} = 132$ *cresc.* *ff* **F** Allegro $\text{♩} = 132$ *f* $\frac{4}{4}$ *Meno mosso* $\text{♩} = 108$

101 *p* *pp* *cresc.* **F** *f*

113

119 **G**

125 *mf*

131

136

1st E♭ ALTO
SAXOPHONE

Egmont

Ludwig van Beethoven

Arr.: John Glenesk Mortimer

Sostenuto (in 6) ♩ = 100

 Photocopying
is illegal!



12 A



20 B Allegro molto ♩ = 144



31 1



46 C



63 sf



75 D



93 E



107 sf sf sf sf sf sf



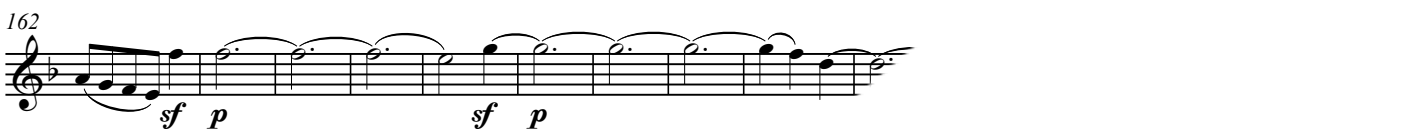
116 F



146 G



162 sf p sf p



1st E \flat ALTO
SAXOPHONE

Dichter und Bauer

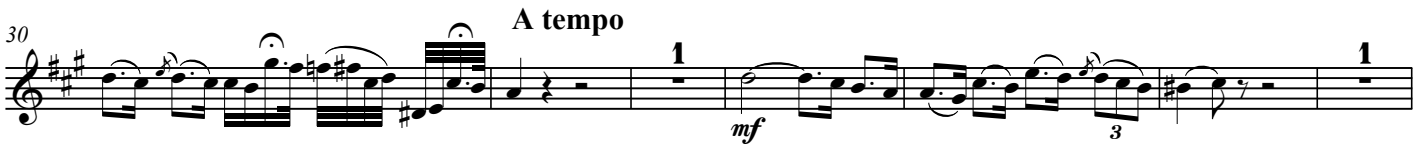
Poète et Paysan / Poet and Peasant

Franz von Suppé

Arr.: Jérôme Naulais

Andante maestoso $\text{♩} = 76$

~~Photocopying~~
is illegal!



1st E \flat ALTO
SAXOPHONE

The Mastersingers

Richard Wagner
Arr.: John Glenesk Mortimer

Moderato $\text{♩} = 112$

 Photocopying is illegal!

sost.
f



9 A



cresc. *ff*

15 *tr*



23 B



f *mf*

31



mp *p* *pp*

38 C



f 6

44



6 *tr* 6

50



6 6 6

56 D



ff

65



f espr.

75 E



ff

86

95

poco rit. **F** Poco meno ♩ = 100

103

109

G

115

Poco più mosso ♩ = 108

121

H Tempo I ♩ = 112

127

133

I

139

cresc. poco a poco

145

151

J

161

Der Schauspieldirektor

Le Directeur de Théâtre / L'Impresario

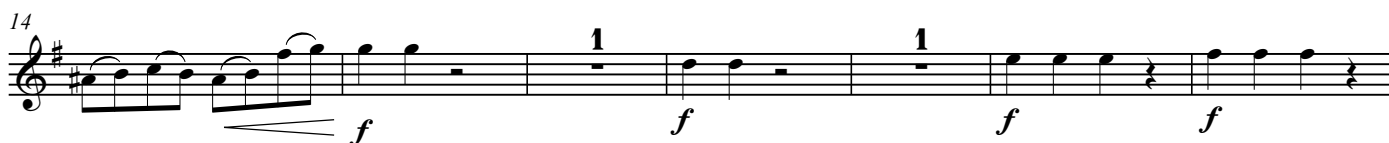
Wolfgang Amadeus Mozart

Arr.: Jérôme Naulais

1st E♭ ALTO
SAXOPHONE

Allegro Moderato $\text{♩} = 76$


Photocopying
is illegal!



Play The 1st.... With The Wind Orchestra

FAMOUS OVERTURES 2

La Gazza Ladra (Rossini) – Romeo & Juliet (Tchaikovsky) – Egmont (Beethoven) – Dichter und Bauer (Suppé)
The Mastersingers (Wagner) – Der Schauspieldirektor (Mozart)



EMR 31008	Play the 1 st Flute + CD
EMR 31010	Play the 1 st Clarinet + CD
EMR 31009	Play the 1 st Oboe + CD
EMR 31011	Play the 1 st Alto Saxophone + CD
EMR 31012	Play the 1 st Tenor Saxophone + CD
EMR 31013	Play the 1 st Trumpet + CD
EMR 31014	Play the 1 st F Horn + CD
EMR 31015	Play the 1 st Trombone (♭) + CD
EMR 31016	Play the 1 st Baritone (♩) + CD
EMR 31017	Play the Tuba + CD

FAMOUS OVERTURES 3

Tancredi Overture (Rossini) – Prince Igor (Borodin) – Overture Il Seraglio (Mozart) – Tannhäuser (Wagner)
Prelude To Werther (Massenet) – The Messiah (Händel) – Rigoletto (Verdi) – Orphée Aux Enfers (Offenbach)



EMR 31028	Play the 1 st Flute + CD
EMR 31030	Play the 1 st Clarinet + CD
EMR 31029	Play the 1 st Oboe + CD
EMR 31031	Play the 1 st Alto Saxophone + CD
EMR 31032	Play the 1 st Tenor Saxophone + CD
EMR 31033	Play the 1 st Trumpet + CD
EMR 31034	Play the 1 st F Horn + CD
EMR 31035	Play the 1 st Trombone (♭) + CD
EMR 31036	Play the 1 st Baritone (♩) + CD
EMR 31037	Play the Tuba + CD

FAMOUS OVERTURES 4

Overture "1812" (Tchaikovsky) – L'Italiana in Algeri (Rossini) – Cuban Overture (Gershwin) – Macbeth (Verdi)
Ride Of The Valkyries (Wagner) – Das Land des Lächelns (Lehár) – Festive Overture (Shostakovich)



EMR 31048	Play the 1 st Flute + CD
EMR 31050	Play the 1 st Clarinet + CD
EMR 31049	Play the 1 st Oboe + CD
EMR 31051	Play the 1 st Alto Saxophone + CD
EMR 31052	Play the 1 st Tenor Saxophone + CD
EMR 31053	Play the 1 st Trumpet + CD
EMR 31054	Play the 1 st F Horn + CD
EMR 31055	Play the 1 st Trombone (♭) + CD
EMR 31056	Play the 1 st Baritone (♩) + CD
EMR 31057	Play the Tuba + CD

FAMOUS OVERTURES 5

Die Schöne Galathée (Suppé) – La Traviata (Verdi) – Don Pasquale (Donizetti) – The Queen Of Spades (Tchaikovsky)
La Vie Parisienne (Offenbach) – Coriolan (Beethoven) – Giselle (Adam) – Norma (Bellini) – An American In Paris (Gershwin)



EMR 31068	Play the 1 st Flute + CD
EMR 31070	Play the 1 st Clarinet + CD
EMR 31069	Play the 1 st Oboe + CD
EMR 31071	Play the 1 st Alto Saxophone + CD
EMR 31072	Play the 1 st Tenor Saxophone + CD
EMR 31073	Play the 1 st Trumpet + CD
EMR 31074	Play the 1 st F Horn + CD
EMR 31075	Play the 1 st Trombone (♭) + CD
EMR 31076	Play the 1 st Baritone (♩) + CD
EMR 31077	Play the Tuba + CD