

On This Silent Night

with
Silent Night

Words by
Ruth Elaine Schram
and Joseph Mohr

For Unison or Optional 2-Part Treble Voices, Accompanied
with Optional Flute (or C-Instrument)*

STILLE NACHT
Music by Franz Grüber
Additional Music by
Ruth Elaine Schram

Tenderly (♩ = ca. 92)

Flute (or C-Instrument)

Play cue notes first time only.

Play meas. 7 - 27 second and third times only.

5

7

****Part 1 (Sing first and third times)**
mp

*Si - lent night,

****Part 2 (Sing second and third times) (opt.)**
mp

On this si - lent night,

7

*Part for Flute (or C-Instrument) is found on page 8.

**For performance by unison voices, sing Part 1 the first time, Part 2 the second time, then Part 1 again the third time.

9

ho - ly night, all is calm,
on this ho - ly night, all the world is calm,

13

15

all is bright round yon vir - gin
all the world is bright. Round the Son of God,

moth - er and child. Ho - ly
love's pure light is beam - ing; from His ho - ly

In - fant so ten - der and mild, sleep in
face, ra - di - ance is stream - ing, as He

24

heav - en - ly peace, _____ sleep _____ in

sleeps in heav - en - ly peace. Go to sleep;

This block contains measures 24 through 27 of the musical score. It features a vocal line with lyrics and a piano accompaniment. The key signature has two flats (B-flat and E-flat). A large 'PREVIEW ONLY' watermark is diagonally across the page.

28

heav - en - ly peace.

dim.

dim.

This block contains measures 28 through 31. Measure 28 includes a first ending bracket labeled '1' and the instruction '(Play) mp'. Measure 29 includes a first ending bracket labeled '1' and the instruction 'dim.'. The piano accompaniment in measure 29 is marked 'dim.'. The key signature remains two flats. A large 'PREVIEW ONLY' watermark is diagonally across the page.

33

(back to meas. 7) | 2

(back to meas. 7) | 2

(back to meas. 7) | 2

sleep — in peace.

(back to meas. 7) | 2

37

(back to meas. 7)

(back to meas. 7)

(back to meas. 7)

(back to meas. 7)

The image displays a musical score for the hymn 'On This Silent Night'. It consists of four systems of staves. The first system (measures 33-36) includes a vocal line and three piano accompaniment staves. The vocal line has a repeat sign at measure 34 with the instruction '(back to meas. 7)' and a first ending bracket. The piano accompaniment also has repeat signs at measures 34 and 35. The lyrics 'sleep — in peace.' are written under the vocal line. The second system (measures 37-40) continues the vocal and piano parts, with similar repeat signs and the instruction '(back to meas. 7)' at the end of each system. A large, diagonal 'PREVIEW ONLY' watermark is overlaid across the center of the page.

42

3

dim. *rit.*

heav - en - ly peace.

3

dim. *rit.*

sleep in peace.

3

dim. *rit.*

45

p

p

Sleep in heav - en - ly peace.

p

Sleep in peace.

p

On This Silent Night

with

Silent Night

Words by
Ruth Elaine Schram
and Joseph Mohr

For Unison or Optional 2-Part Treble Voices, Accompanied
with Optional Flute (or C-Instrument)

STILLE NACHT
Music by Franz Grüber
Additional Music by
Ruth Elaine Schram

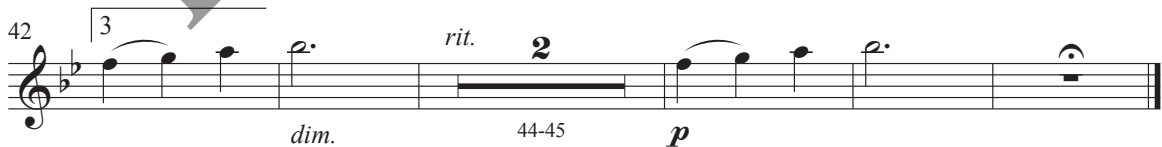
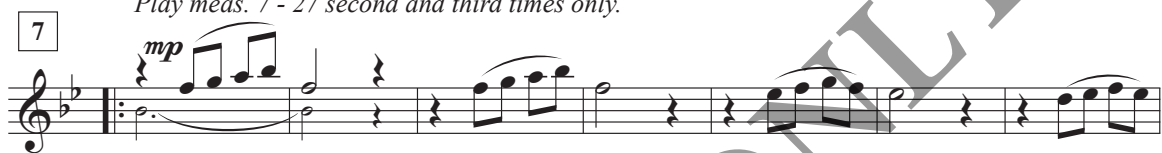
Flute (or C-Instrument)

Tenderly (♩ = ca. 92)



Play cue notes first time only.

Play meas. 7 - 27 second and third times only.



© 2015, 2021 Celebrating Grace Music,

a division of Celebrating Grace, Inc. All rights reserved.

Reproduction of this publication without permission of the publisher is illegal.

THE CCLI LICENSE DOES NOT GRANT PERMISSION TO PHOTOCOPY THIS MUSIC.

