

CONTENTS

| | | |
|---------------------------------------|---|-----------|
| PIANO HANDS AND WARM-UPS | | 4 |
| LEFT AND RIGHT-HAND TAPPING | | 6 |
| EXPLORING THE KEYBOARD | | 8 |
| MUSIC SHAPES AND WRITING MUSIC |  | 10 |
| PLAYING ON THE BLACK KEYS | | 12 |
| TWO FAMOUS PIECES | | 14 |
| A NEW NOTE LENGTH |  | 17 |
| JUMPS AND SOFT LANDINGS | hand and wrist flexibility | 18 |
| POLAR BEAR SNOW DENS | hand and finger flexibility | 19 |
| FINDING MIDDLE C | | 20 |
| ANOTHER NEW NOTE LENGTH |  | 21 |
| PRINCE OF DENMARK'S MARCH |  | 22 |
| A MUSICAL JOKE | | 24 |
| A NEW HAND POSITION | | 25 |
| LISTEN THEN COPY |  | 26 |
| QUICK MOVES! | | 28 |
| READ, CLAP AND PLAY |  | 29 |
| LOUDER AND QUIETER | | 30 |

© 2023 by Faber Music Ltd and Lang Lang
 All rights administered by Faber Music Ltd
 This edition first published in 2023
 Bloomsbury House, 74–77 Great Russell Street London WC1B 3DA
 Music processed by Donald Thomson
 Illustrations and page design by Elizabeth Ogden
 Printed in England by Caligraving Ltd
 All rights reserved.

Lang Lang: worldwide management – Jean-Jacques Cesbron
 CAMI Music, New York (www.camimusic.com)
 Lang Lang: UK/Ireland management – Steve Abbott,
 Rainbow City Broadcasting Ltd (www.rainbowcity.co)

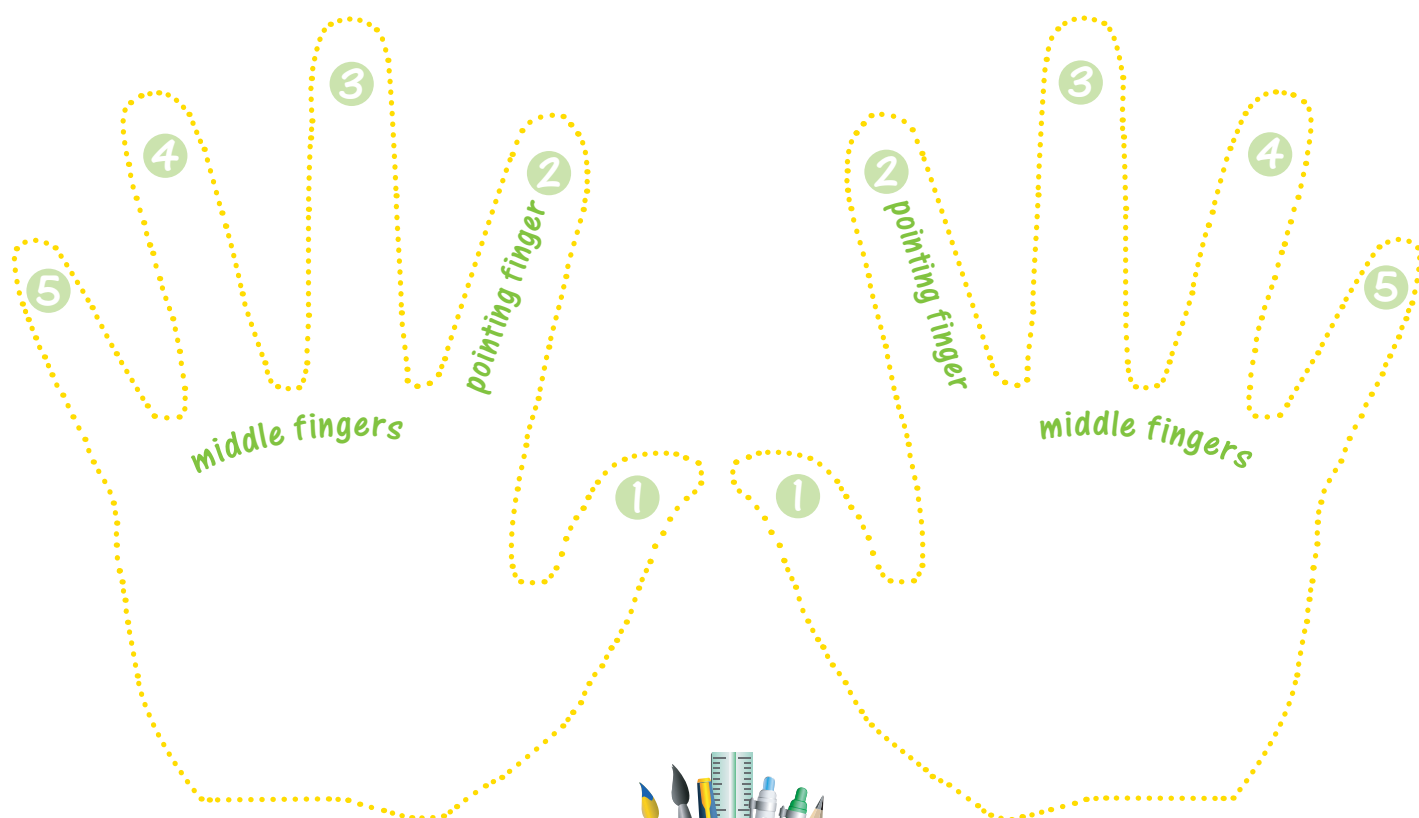
ISBN10: 0-571-54167-4
 EAN13: 978-0-571-54167-6



PIANO HANDS

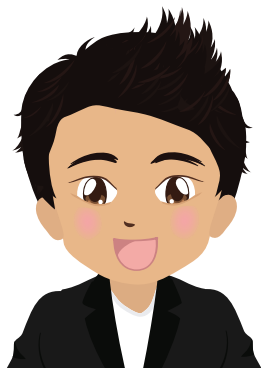


Draw around your hands and number the fingers and thumbs.



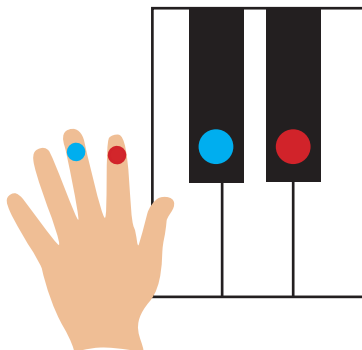
PLAYING ON THE BLACK KEYS

CHINESE DRAGON FESTIVAL

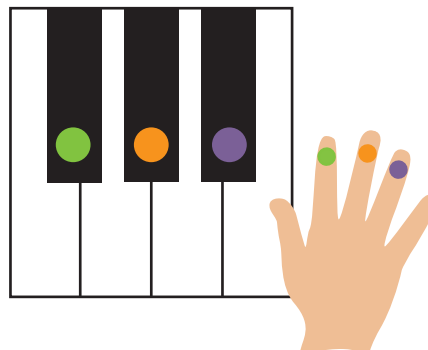


Here's the beginning of a tune to celebrate Chinese New Year. Play along with the teacher's part or track ② and make up some different endings. Now you're a composer!

Left hand



Right hand



PLAY:



3 2 3 2



2 3 4

CONCERT
PIECE

Track

② **TEACHER'S PART** (repeated three times on track ②)

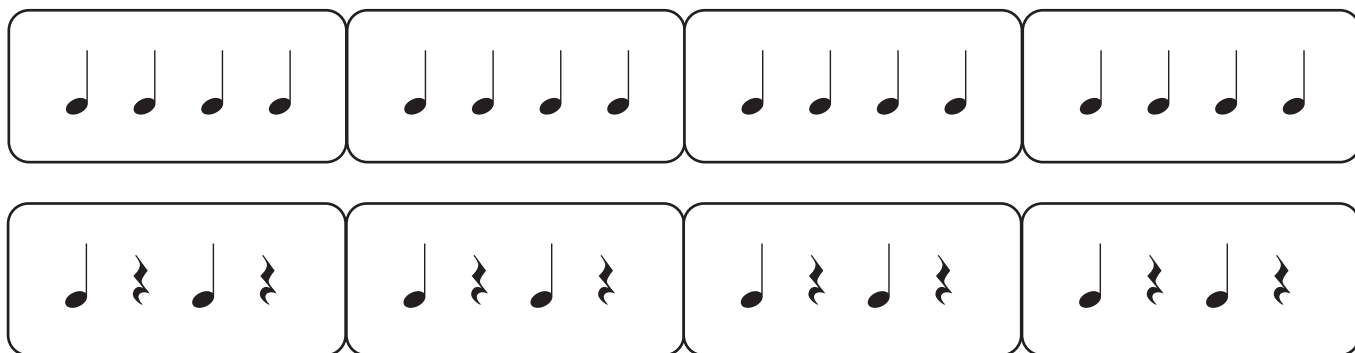


TWO FAMOUS PIECES

Let's start by learning the rhythm.



Get started by clapping this pattern to track ④ or the teacher's part:



Try to play the rhythm steadily, to a beat.



You can clap or tap this.

Track

④

TEACHER'S PART

