

IN YOUR WILDEST DREAMS

TYLER S. GRANT

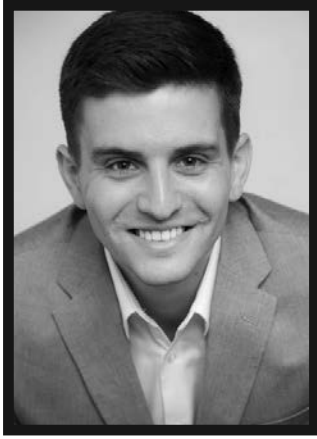
INSTRUMENTATION

- 1 Conductor Score
- 8 Violin 1
- 8 Violin 2
- 5 Violin 3 (Viola T.C.)
- 5 Viola
- 5 Violoncello
- 5 Double Bass

Preview Only
Legal Use Requires Purchase



Please note: Our band and orchestra music is collated by an automatic high-speed system.
The enclosed parts are now sorted by page count, rather than score order.



THE COMPOSER

Tyler S. Grant is an internationally recognized composer, arranger, conductor, and clinician of music for concert bands, orchestras, and chamber ensembles of all levels. His music is featured regularly in performances by both region and all state honor ensembles and is also featured annually on Editor's and Publisher's Choice Repertoire Lists around the world. His work *Panoramic Fanfare* was a winner of the Dallas Wind Symphony's 2014 "Call for Fanfares" Competition. *Panoramic Fanfare* has since been performed by collegiate and professional ensembles throughout North America.

Since 2010, Tyler has regularly accepted commissions for new works and produced new publications for bands and orchestras each year. He credits his mentor Brian Balmages as pivotal to his success as a composer. Notable performance venues of his works include The Midwest Clinic, Carnegie Hall, Music for All's National Concert Band Festival, College Band Directors National Association Conference, the Meyerson Symphony Center, the Macy's Thanksgiving Day Parade, Bands of America Regional & Grand National Competitions, and numerous state-wide, national, and international music conferences and conventions.

In addition to composing and arranging, Tyler enjoys conducting and clinic engagements with ensembles throughout the United States. He has served as a clinician with over 100 school instrumental music programs and honor groups across more than 15 states. Tyler was a contributing author for Alfred Music's *Sound Innovations: Ensemble Development* series and has contributed interviews to numerous podcasts and articles including *School Band & Orchestra Magazine* and *The Instrumentalist*. Notable conducting venues include The Midwest Clinic and all-state bands in Nebraska, Oregon, Alabama, Louisiana, South Dakota, and North Dakota.

Tyler is a graduate of the University of Alabama where he earned a bachelor's degree in instrumental music education and studied conducting with Professor Randall Coleman. Before becoming a full-time composer and arranger, Tyler served as the Director of Bands at Holy Innocents' Episcopal School from 2019–2023. He currently resides in Atlanta, Georgia, and maintains an active composing and conducting schedule. His published works are available through The FJH Music Company, Inc., Alfred Music/MakeMusic Publications, and Tyler S. Grant Music Works, LLC.

ABOUT THE MUSIC

Dreams are powerful. Particularly when we are young, dreams are one of the most important things we have as we prepare to navigate the complicated paths of life. Personally, I believe that dreams stem from us all seeking to be fulfilled in our daily lives and wishing to make the world a better place than when we found it. *In Your Wildest Dreams* is a celebration of the dreamers in our world and celebrates the determination it takes to bring a dream into reality.

In Your Wildest Dreams was commissioned by Music & Arts and is dedicated to anyone and everyone who brings music to the lives of young people!

—Tyler S. Grant

DURATION: 2:00

commissioned by Music & Arts and dedicated to anyone and everyone
who brings music to the lives of young people

IN YOUR WILDEST DREAMS

TYLER S. GRANT
(ASCAP)

With optimism (♩ = 144)

5

Violin 1

Violin 2

Viola
(Violin 3)

Violoncello

Double Bass

2 3 4 5

Vln. 1

Vln. 2

Vla.

Vcl.

D.B.

6 7 8 9 10

Vln. 1

Vln. 2

Vla.

Vcl.

D.B.

11 12 13 14 15



Vln. 1

Vln. 2

Vla.

Vcl.

D.B.

16 17 18 19 20

(V)

21

Vln. 1

Vln. 2

Vla.

Vcl.

D.B.

21 22 23 24 25 26

mf

4

29

Vln. 1

Vln. 2

Vla.

Vcl.

D.B.

27 28 29 30 31 32

p

p

mp

pizz.

p

pizz.

p

+

+

Vln. 1 *mf*
 Vln. 2 *mf*
 Vla. *mf*
 Vcl. *mf*
 D.B. *mf*

cresc.
non div.
cresc.
cresc.
cresc.

33 34 35 36 37 38

41

Vln. 1 *f*
 Vln. 2 *f*
 Vla. *f*
 Vcl. *f*
 D.B. *f*

p
p
p
p

39 40 41 42 43

49

Vln. 1 *mf*
 Vln. 2 *mp*
 Vla. *mp*
 Vcl. *mp*
 D.B. *pizz.* *mp*

pizz.
arco
pizz.

44 45 46 47 48 49

Vln. 1

Vln. 2

Vla.

Vcl.

D.B.

50 51 52 53 54

Vln. 1

Vln. 2

Vla.

Vcl.

D.B.

55 56 57 58 59

Vln. 1

Vln. 2

Vla.

Vcl.

D.B.

60 61 62 63 64 65

69

Vln. 1

Vln. 2 non div.

Vla.

Vcl.

D.B.

66 67 68 69 70

p *mf* *mf*

71 72 73 74 75

Vln. 1

Vln. 2

Vla.

Vcl.

D.B.

fp *f* *mp* *f* *mp* *f*

Vln. 1

Vln. 2

Vla.

Vcl.

D.B.

76 77 78 79 80

81 82 83 84 85

Vln. 1

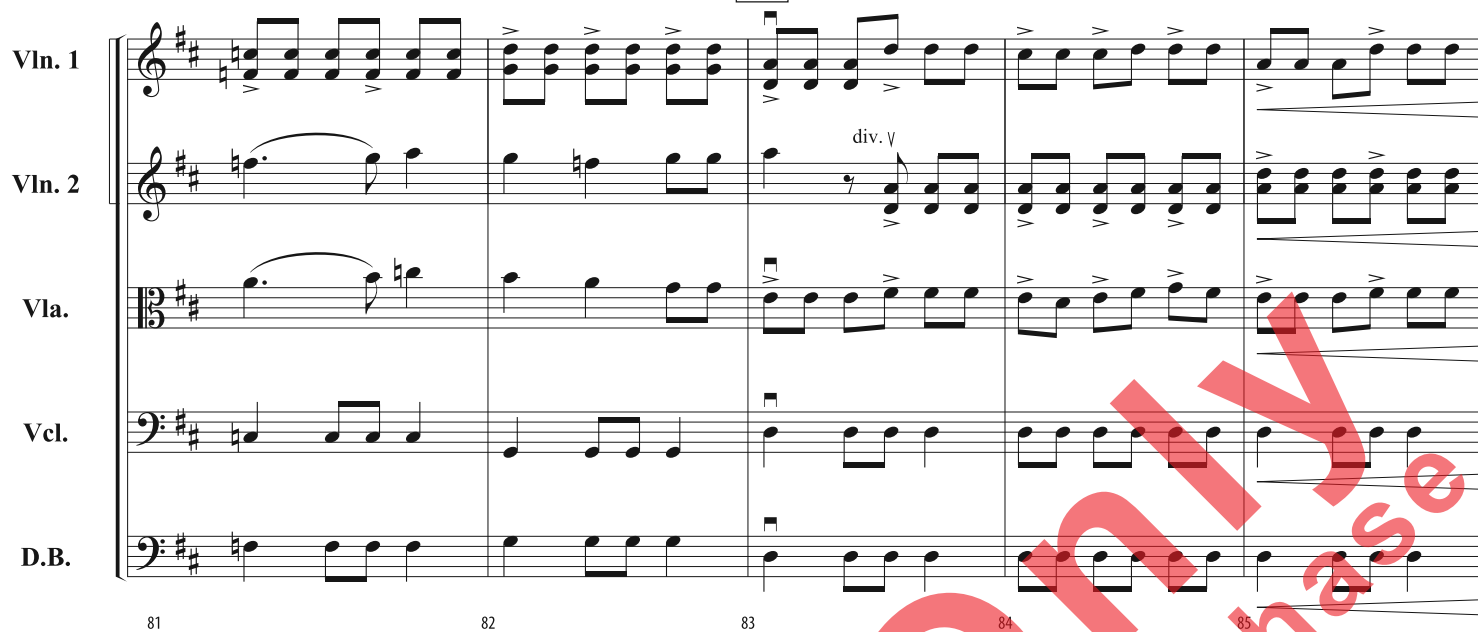
Vln. 2

Vla.

Vcl.

D.B.

div. v



86 87 88 89 90

Vln. 1

Vln. 2

Vla.

Vcl.

D.B.

f

(V)



91 92 93 94 95

Vln. 1

Vln. 2

Vla.

Vcl.

D.B.

div.

(V)

