

SHE IS EVENING

T(T)B, accompanied

Music by
VICKI TUCKER COURTNEY

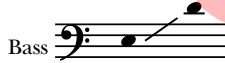
Words by
JOHN PARKER

BriLee Music
Part-by-Part



Free MP3 rehearsal and accompaniments
Go to: www.BriLeeMusic.com

Ranges:



Language: English

Use: General

Time: Approx. 1:58

*Difficulty: Moderate

Performance Notes

Vicki Tucker Courtney's TB arrangement of this descriptive text of youthful love and admiration by John Parker is laden with opportunities to be musically expressive and for text painting. One example can be found in m. 24. The words "She is autumn in the woods" should be stressed as follows:

She is au-tumn in the woods

It is always important to be aware of which part is singing the melody and which part is singing the echo or "reply" to the melody (for example, mm. 24–35). For a dramatic contrast, observe the *rit.* in mm. 44–45 prior to singing the final verse.

She Is Evening

for T(T)B Voices with Keyboard

3

JOHN PARKER

VICKI TUCKER COURTNEY

Expressively (♩ = c. 72)

Tenor

Bass

Keyboard

mp

mp

She is eve-ning by the

She is eve-ning by the

6

sea; _____ the fall-ing sun, her gen-tle sighs; _____

sea; _____ the fall-ing sun, her gen-tle sighs; _____

12

cresc.

dim.

her smile, the cool-ness of the air; _____ her eyes, the

cresc.

dim.

her smile, the cool-ness of the air; _____ her eyes, the

cresc.

dim.

17

sweet-ness of the skies. _____

sweet-ness of the skies. _____

mf

23

mf

She is au-tumn in the woods; _____ her touch, the

mp

In _____ the woods;

29

cresc.

bril-liance of the leaves; _____ her voice is like the morn-ing

of _____ the leaves;

cresc.

34

dim.

dew; _____ her hair, the pal - ate na - ture weaves. _____

dim.

morn-ing dew; her hair, the pal - ate na - ture weaves. _____

dim.

39

f rit.

Like gaz-ing

f

Like gaz-ing

rit.

cresc.

45 *a tempo*

on the stars at night _____ her love is deep-er than the

on the stars at night _____ her love is deep-er than the

a tempo

f

BL777

**Illegal to print or copy
for on-screen use only**

BriLee Music

the Voice of Choral Music

BriLee Music, founded by the late Brian Busch in 1997, is the leader in publishing choral music written specifically for the developing middle school and junior high singer.

With writing guidelines carefully developed by Brian, teachers who buy from the BriLee catalog know they will always find the following in music written by BriLee composers:

- Range appropriate – specifically for the adolescent changing voice
- Moderate in length
- Interesting, appealing and varied texts
- Accessible accompaniments

Writers for BriLee are among the most outstanding and respected in their field. The music is written, arranged and edited to meet a wide range of performance needs. The standard of musical excellence we present in each choral work is designed to meet the challenges faced by teachers and conductors all over the world who wish to offer quality, accessible repertoire to their ensembles.

BriLee Music **Part-by-Part**

Free MP3 rehearsal and accompaniments

Go to: www.BriLeeMusic.com

Part-by-Part resources were created to allow you, the busy choral director, more time to do the things you need to do to be successful in rehearsal and performance.

Download the following FREE resources and use them to help you TEACH your singers.



- Part-dominant recordings allow your singers to sing along with their part while hearing the other voices in the background.
- Full chorus recordings allow your singers to see and hear the music at the same time for greater insight.
- Professional accompaniments can be used for rehearsal or performance.

BriLee Music
the Voice of Choral Music

BL777 — \$1.80 USA



6 72405 00777 1

Exclusively Distributed by
CARL FISCHER®

65 Bleecker Street, New York, NY 10012
www.carlfischer.com