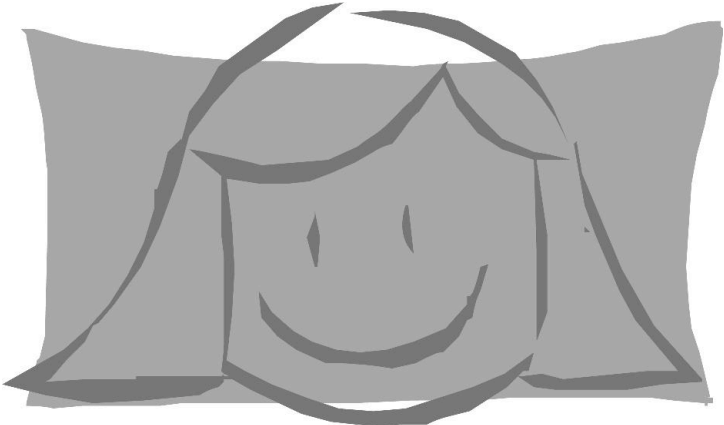
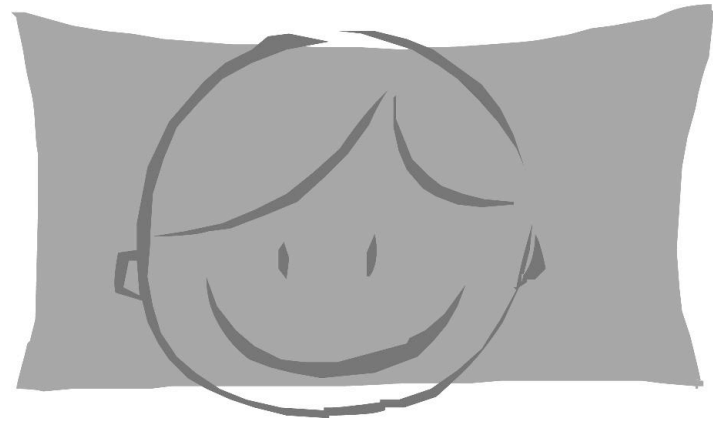


Space Notes on the Treble Staff



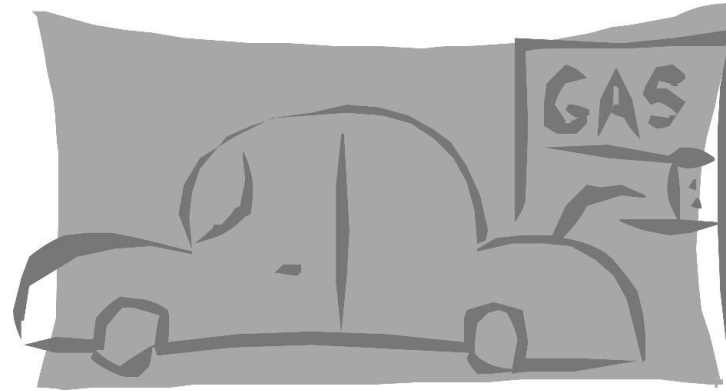
A musical staff consisting of two staves. The top staff is a treble clef staff with a treble clef symbol on the left. It contains four quarter notes on the spaces of the staff: F (first space), A (second space), C (third space), and E (fourth space). Below each note is its corresponding letter: F, A, C, and E. The bottom staff is a bass clef staff with a bass clef symbol on the left. It is currently empty. A large curly brace on the left side of the staves groups them together.

Line Notes on the Treble Staff

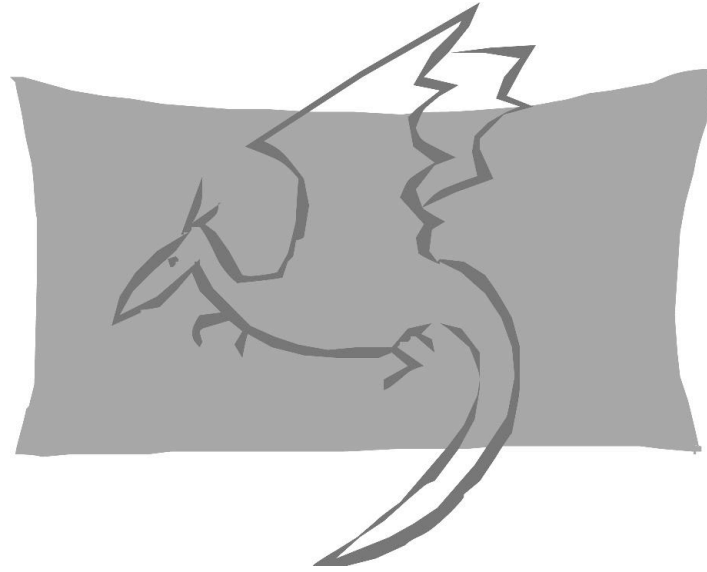
A musical staff with a treble clef and a bass clef. The treble staff contains five line notes: E (first line), G (second line), B (third line), D (fourth line), and F (fifth line). The lyrics "Every Good Boy Does Fine" are written below the treble staff, with the first letter of each word being large and bold. The bass staff is empty.

Every **G**ood **B**oy **D**oes **F**ine

Space Notes on the Bass Staff

A musical staff consisting of two staves. The top staff has a treble clef and is empty. The bottom staff has a bass clef and contains four space notes. Above the notes are the lyrics: "All Cars Eat Gas".

All Cars Eat Gas



Line Notes on the Bass Staff

A musical staff consisting of two staves. The top staff has a treble clef and is empty. The bottom staff has a bass clef and contains four quarter notes. The notes are G2, B1, D2, and F2. Above the notes, the lyrics "Great Big Dragons Fly Away" are written in a large, bold, sans-serif font. The letters G, B, D, F, and A are significantly larger than the rest of the text. A large curly brace on the left side of the staff groups both staves together.

Great **B**ig **D**ragons **F**ly **A**way