

Quick Pick Reference Guide

Alphabet Knowledge

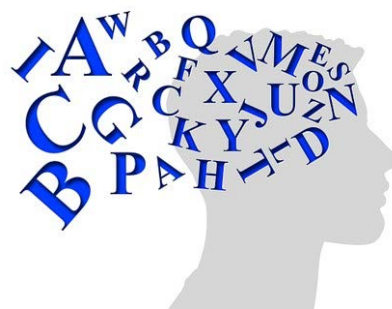
Alphabetic principle

The mapping of sounds onto print in an alphabetic language system

There is a long history of research supporting the predictability of letter-naming knowledge in regards to later reading success. Since the 1960's, research findings have shown that letter-naming predicts later reading achievement. Preschool through kindergarten children with poor letter naming knowledge are more likely to struggle with learning to read and are more likely to be classified as having a reading disability. We know that difficulty with letter recognition has shown to compromise early reading development.

Principles for Teaching Alphabet Knowledge

- Multisensory teaching
- Sequential presentation of letters
- Early identification and Intervention
- Frequent distributed practice
- Teaching to automaticity
- Teach proof reading



Challenges to Letter-Naming

When thinking about your students who are struggling with letter-naming, keep these challenges in mind.

- ❖ letter shapes are similar and can be easily confused
- ❖ capital and lower case pairs may look different
- ❖ letter names may sound similar

Identifying the challenge will assist you in providing targeted instruction. Targeted instruction will lead to alphabet knowledge growth in your students.