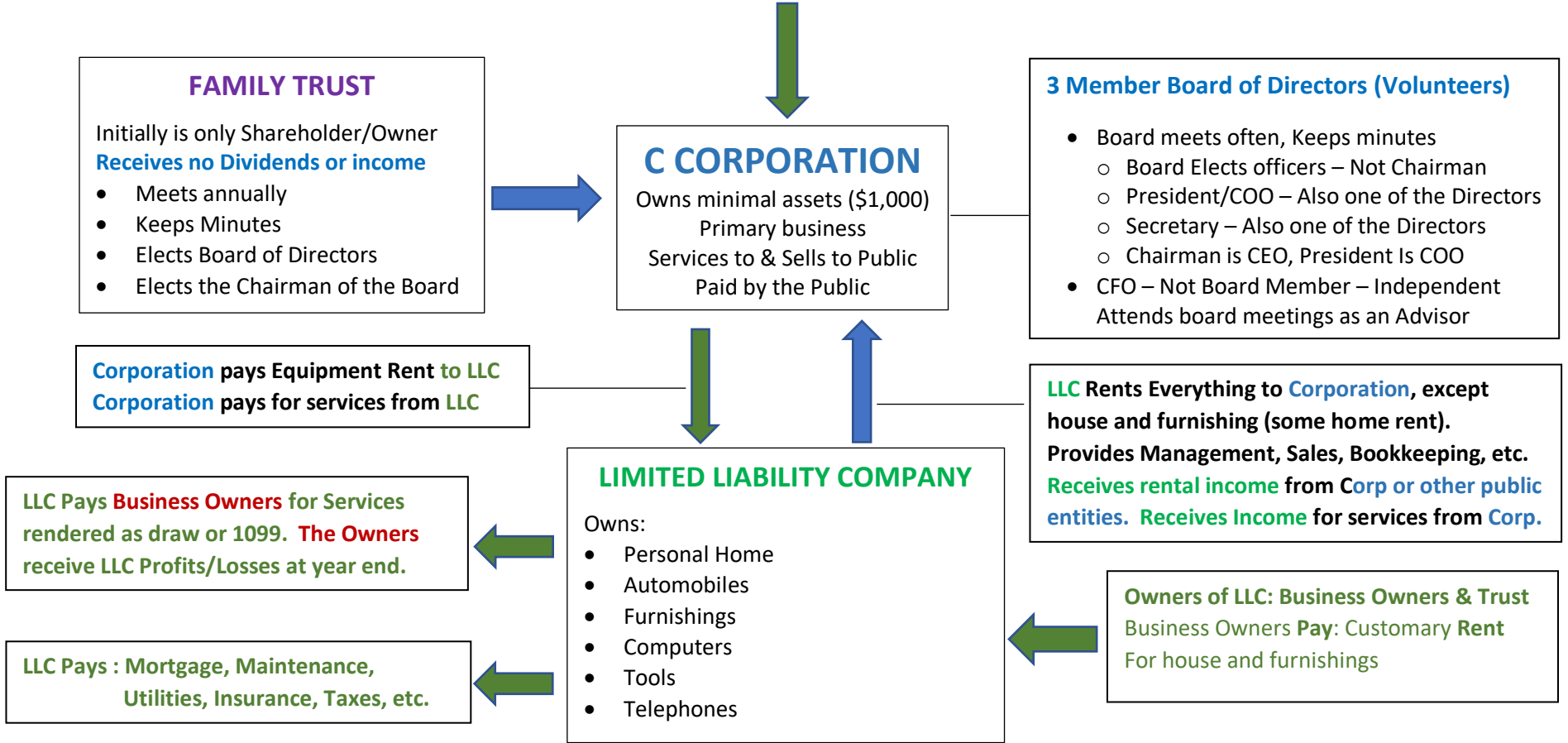




**PRATT AND LEFEVRE CORPORATION'S
 PROPRIETARY BUSINESS ORGANIZATION
 O.N.C.E. CASH FLOW SYSTEM®**

PUBLIC

Customers, Clients, Community, Government, etc.
Public pays C Corporation for Products/Services



NOTE: No matter how many other business entities may be organized, the family LLC must not be publicly visible and only contracts for services with the corporations or LLCs which do business/is visible to/with the public

NOTE: Trust, C Corporation and LLC must have their own bank account, separate from Owner's personal bank account. DO NOT co-mingle personal funds with business. Do not put corporation's money with trust or LLC and vice versa. Operate all Entities Separately..