

PALIHOTEL

SAN DIEGO



## PALIHOTEL SAN DIEGO

*A charming, coastal-inspired urban lodge  
in the heart of the Gaslamp Quarter*

Palisociety reimagines the historic Hotel St. James, originally built in 1912, into Palihotel San Diego, a vibrant and bustling mainstay located in the heart of San Diego's Gaslamp Quarter. Featuring 122 guest rooms, Palihotel San Diego brings a youthful, design-centric offering to San Diego's hotel landscape, showcasing a preppy, nautical-inspired charm, a new restaurant, and a guest-exclusive roof deck offering social hour and the best views of the city. Palihotel San Diego features Saint James French Diner, a restaurant and bar that blends the utilitarian nature of an American diner with the subtle elegance of French bistro cuisine.



# Neighborhood

## *Palihotel San Diego*

With our prime location in the heart of the Gaslamp Quarter, Palihotel San Diego is the perfect location to discover the city, take meetings with clients, or find respite during a local convention, after catching a game at Petco Park, or seeing a concert at the Shell. The neighborhood is highly walkable with some of the city's best shops, restaurants, and sights steps away from your room.











Lobby







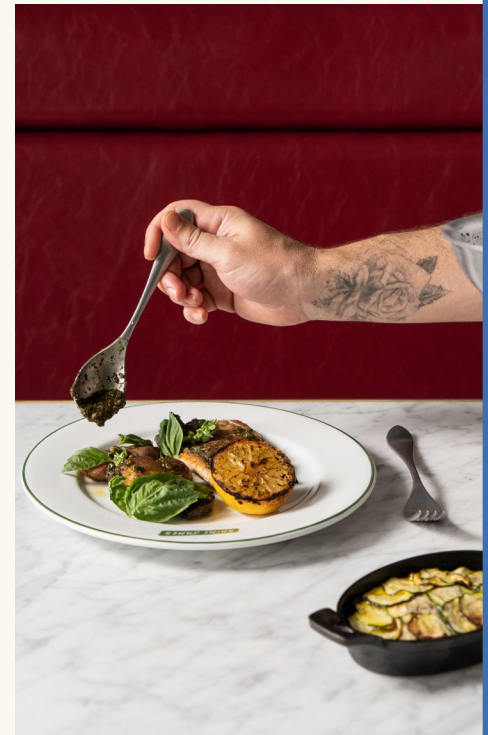






Private Dining Room



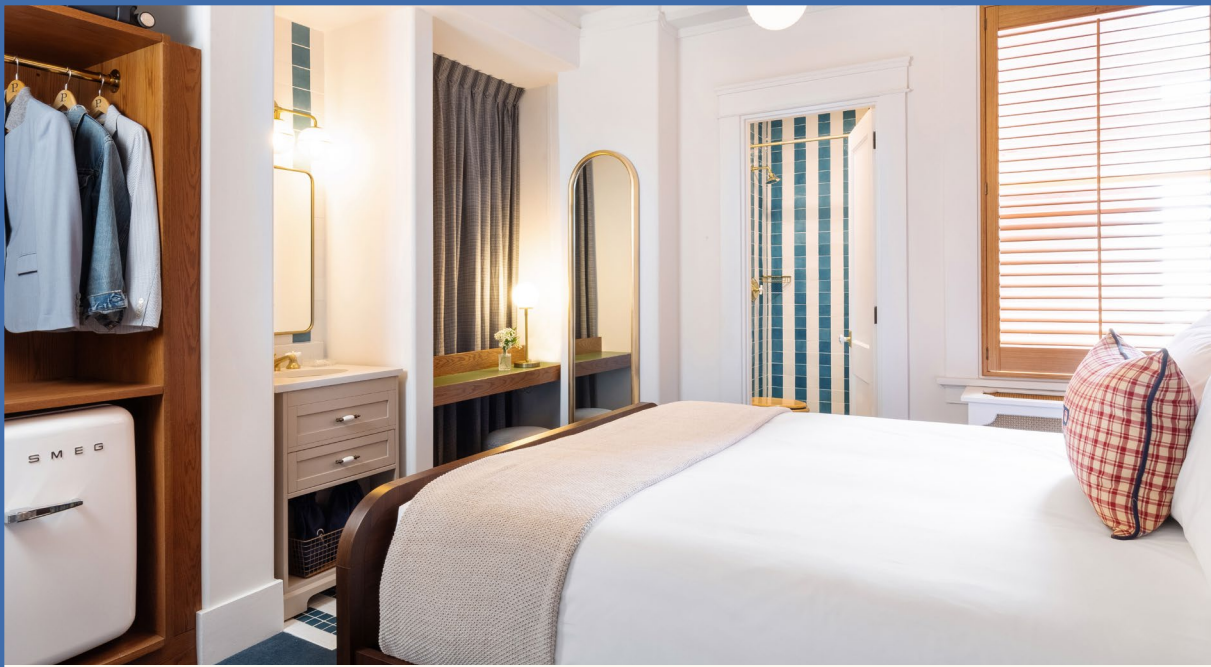


Saint James French Diner



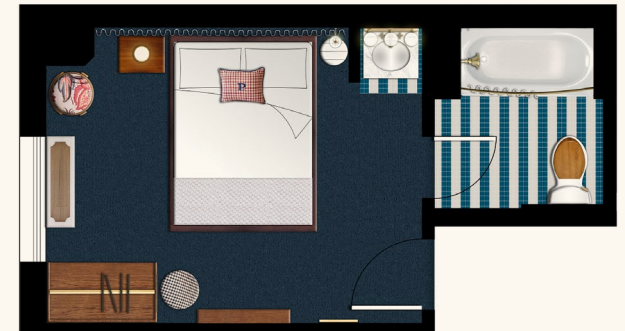
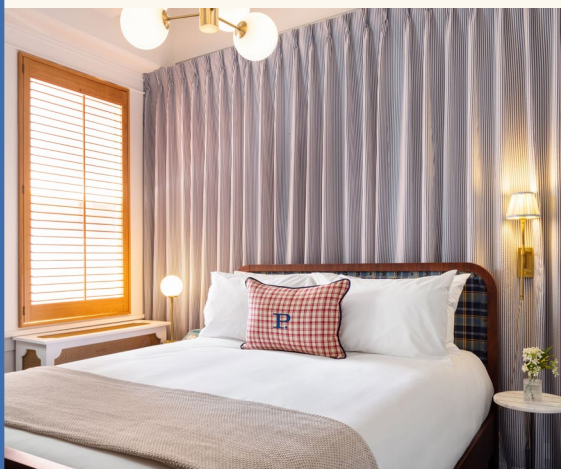






## *The Queen*

- queen bed
- 165 - 190 sq ft
- SMEG mini fridge, Nespresso coffee machine, fully stocked minibar with curated snacks
- Diptyque bath amenities
- Bellino Fine Linens
- plush robes
- high-definition 43-inch TV
- custom furnishings

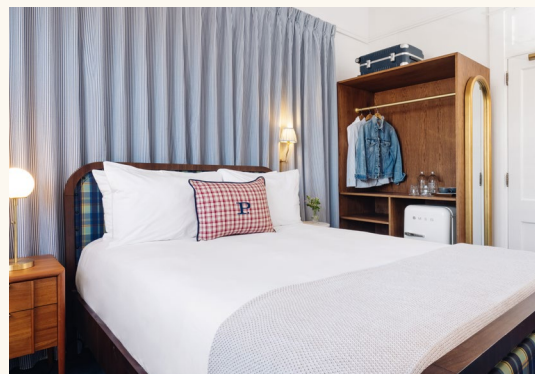




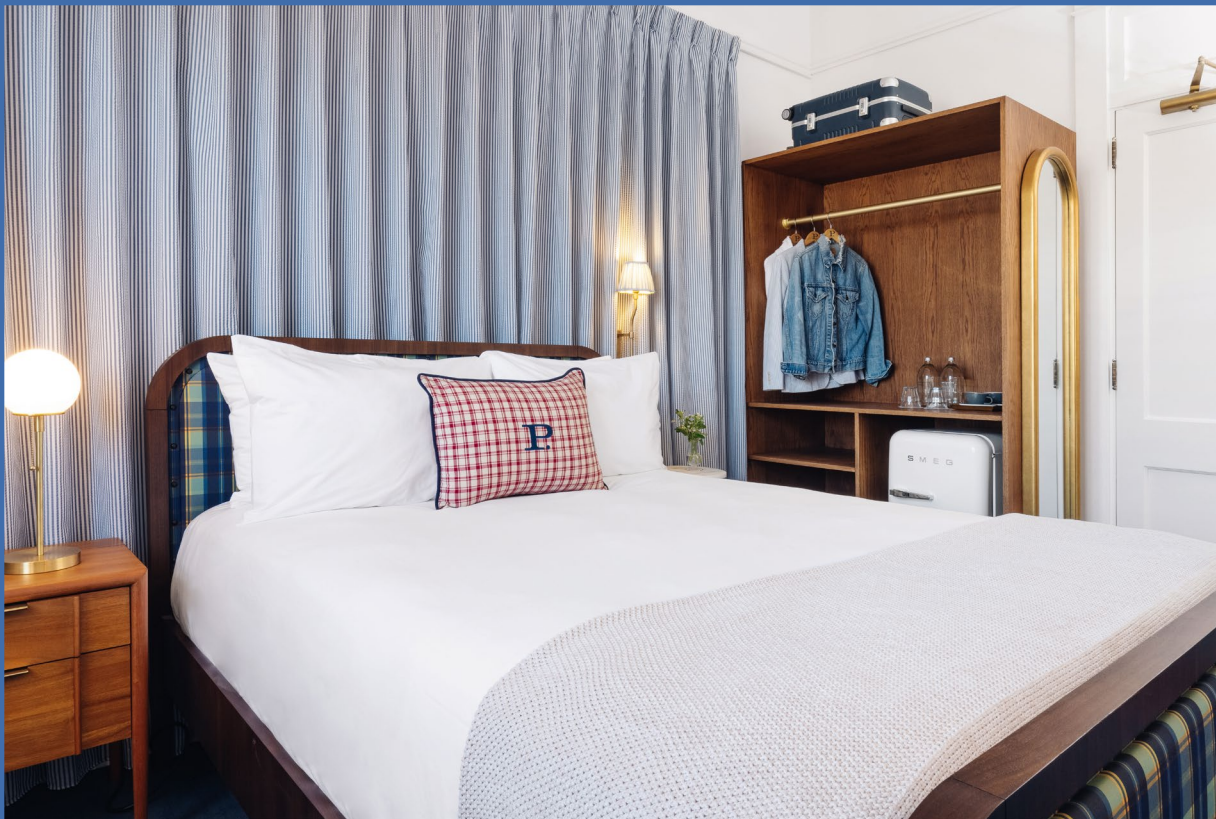


## *The Queen ADA*

- queen bed
- 210 - 220 sq ft
- accessible bathtub or walk-in shower
- SMEG mini fridge, Nespresso coffee machine, fully stocked minibar with curated snacks
- Diptyque bath amenities
- Bellino Fine Linens
- plush robes
- high-definition 43-inch TV
- custom furnishings







## *The King*

- king bed
- 165 - 175 sq ft
- SMEG mini fridge, Nespresso coffee machine, fully stocked minibar with curated snacks
- Diptyque bath amenities
- Bellino Fine Linens
- plush robes
- high-definition 43-inch TV
- custom furnishings





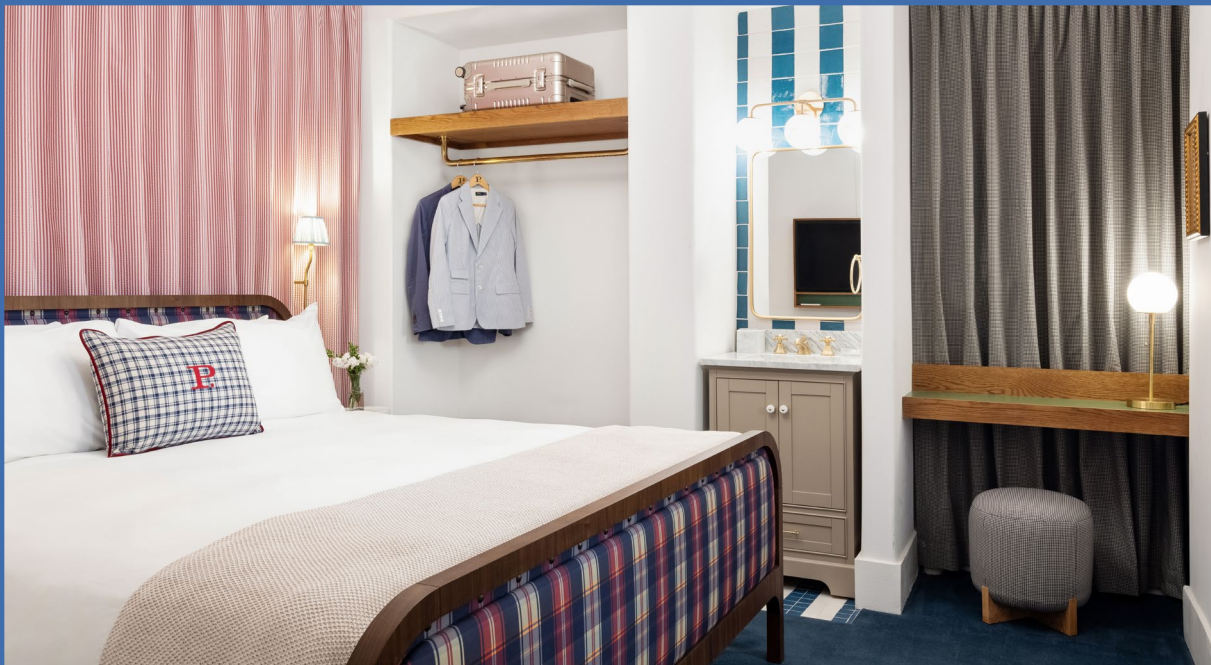


## *The Grand King*

- king bed
- 260 sq ft
- sofa and ottoman
- SMEG mini fridge, Nespresso coffee machine, fully stocked minibar with curated snacks
- Diptyque bath amenities
- Bellino Fine Linens
- plush robes
- high-definition 43-inch TV
- custom furnishings







## *The King Suite*

- king bed
- 340 sq ft
- sleeper sofa and ottoman
- SMEG mini fridge, Nespresso coffee machine, fully stocked minibar with curated snacks
- Diptyque bath amenities and a double vanity sink
- Bellino Fine Linens
- plush robes
- high-definition 43-inch TV
- custom furnishings

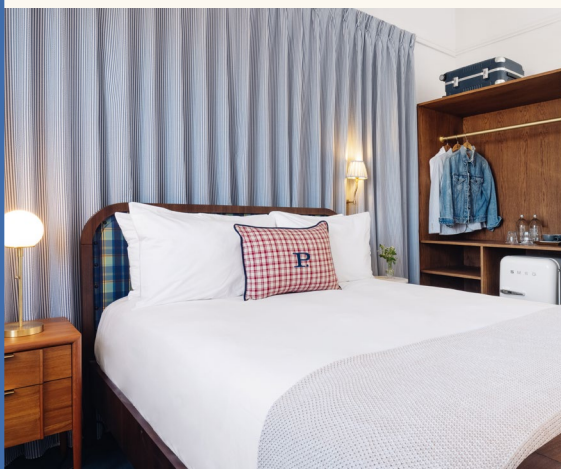






## *The King Suite ADA*

- king bed
- 400 sq ft
- sleeper sofa and separate seating area
- SMEG mini fridge, Nespresso coffee machine, fully stocked minibar with curated snacks
- ADA walk-in shower
- Diptyque bath amenities
- Bellino Fine Linens
- plush robes
- high-definition 43-inch TV
- custom furnishings







## *The Deluxe King Suite*

- king bed
- 410 sq ft
- sleeper sofa and separate seating area
- SMEG mini fridge, Nespresso coffee machine, fully stocked minibar with curated snacks
- Diptyque bath amenities
- Bellino Fine Linens
- plush robes
- high-definition 43-inch TV
- custom furnishings

