



HOTEL

# GRAND STARK

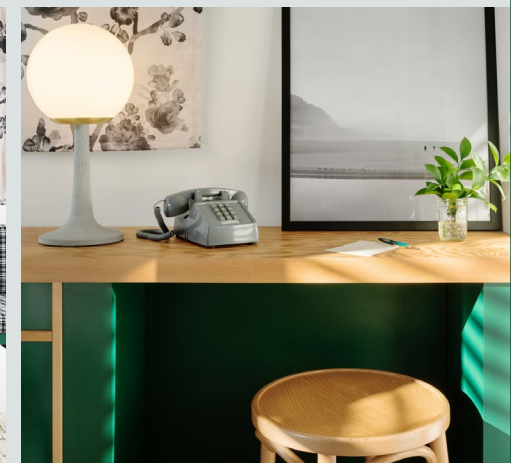
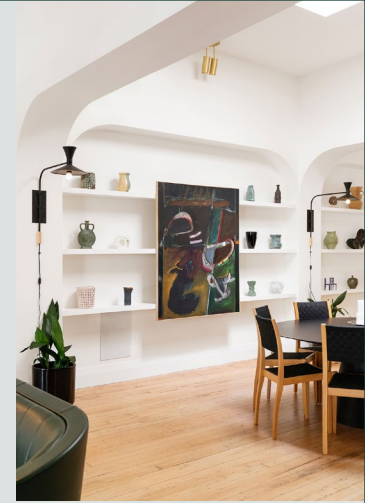
PORTLAND



# HOTEL GRAND STARK

PORTLAND

Located within Portland's vibrant Central East Side, Hotel Grand Stark embodies and evolves the independent spirit of the Pacific Northwest. Within this carefully designed and reimagined historic hotel, we have found inspiration in DIY movements and imperfect beauty. Situated outside the glossier central business district, in both location and mindset, Hotel Grand Stark is more than "Keep Portland Weird" – we represent an elevated reflection of the creative movements and quirky spirit of Portland, and beyond. Featuring 57 bespoke King, Queen and Double-bedded guest rooms, a welcoming Lobby with a separate Study Hall and two dining concepts, the entire hotel has been created to pay homage to the neighborhood's rich history and encourages communal and inclusive spaces for travelers and locals alike.

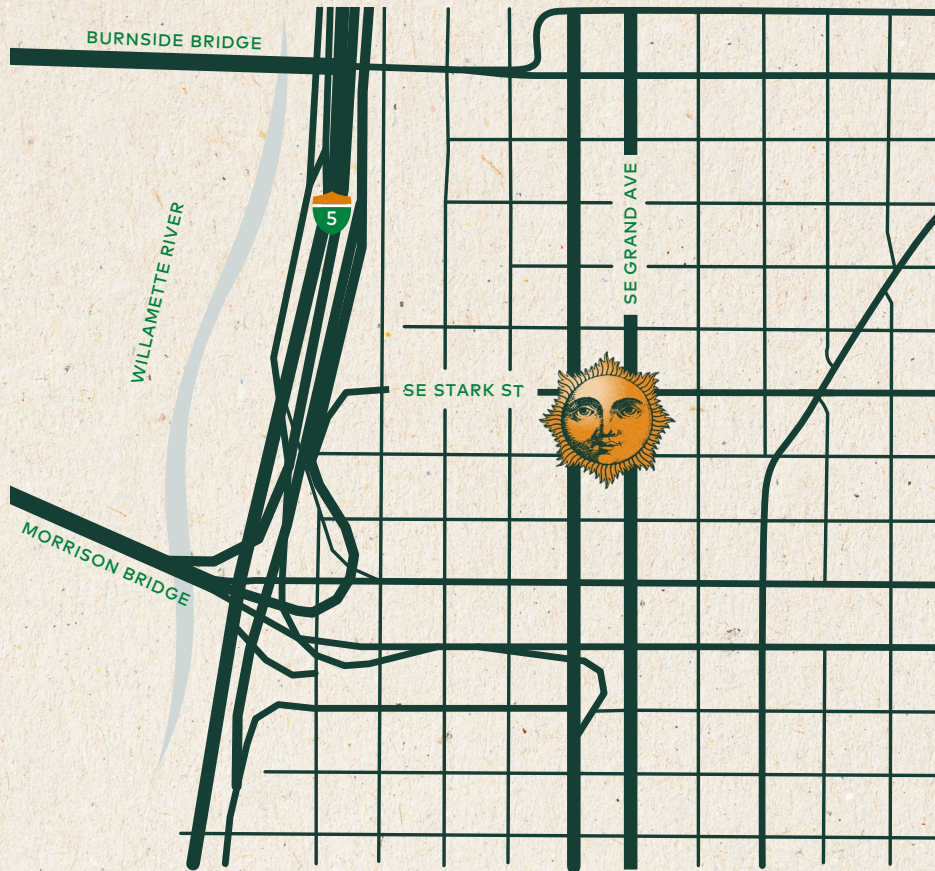




# NEIGHBORHOOD

## HOTEL GRAND STARK

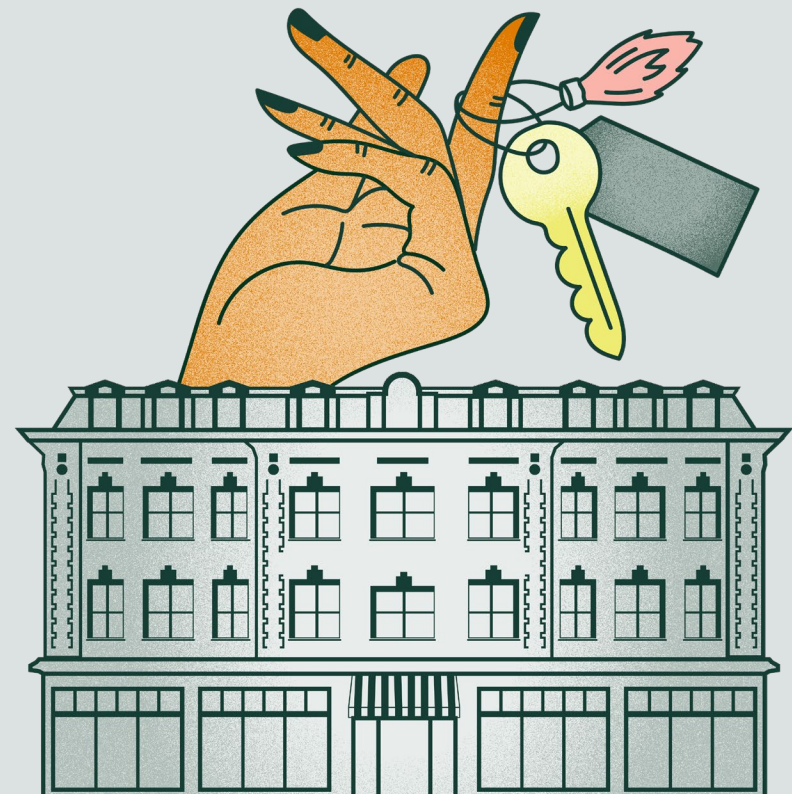
The Central Eastside is a truly special neighborhood within a 'city of neighborhoods.' Located in a central location just opposite the downtown core, merely mirrored across the Willamette River, Hotel Grand Stark anchors east Portland. Born of an industrial past, the neighborhood is home to a host of acclaimed cafes, bars, and restaurants as well as innovative craft makers, artists, and vital everyday light industry. Whether you are staying for one day or a week, we have compiled a highly personal and discerning edit of our [favorite places to visit in the local neighborhood](#).



# GUEST ROOMS

**DOUBLE | QUEEN | KING | GRAND KING | DELUXE KING**

From Double rooms ideal for those traveling with friends and family, to our classic Queen and spacious King rooms, we have a guest room well-suited for every modern traveler. Accommodations lovingly include luxurious amenities like Nespresso coffee machines, SMEG refrigerators, Diptyque bath products, and plush robes.





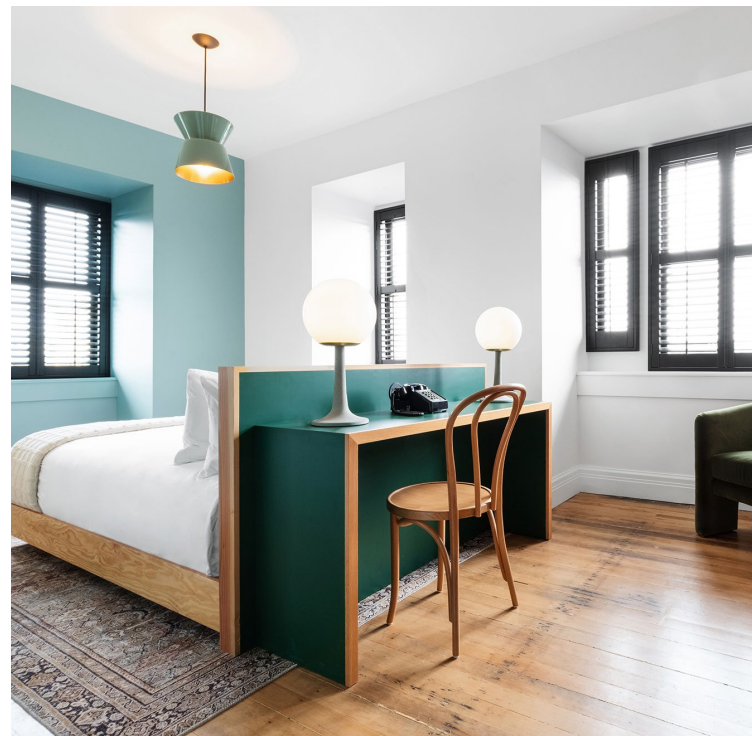
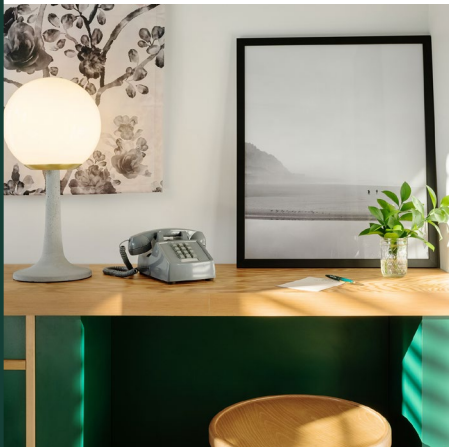
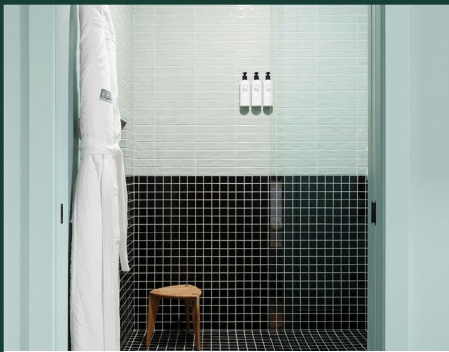


## THE DOUBLE

- two double beds
- 392 sq ft
- luxury linens
- seating area and work desk
- Nespresso machine, Smeg fridge and fully stocked minibar
- 43-inch HDTV with premium channels and complimentary high-speed wi-fi
- walk-in rain shower with Diptyque bath amenities
- in-room safe
- eclectic bespoke furniture and artwork





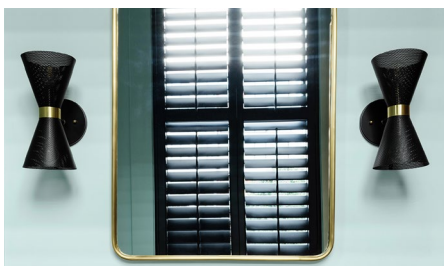


## THE QUEEN

- queen bed
- 221 – 252 sq ft
- luxury linens
- work desk
- Nespresso machine, Smeg fridge and fully stocked minibar
- 43-inch HDTV with premium channels
- complimentary high-speed wi-fi
- walk-in rain shower with Diptyque bath amenities
- in-room safe
- eclectic bespoke furniture and decor

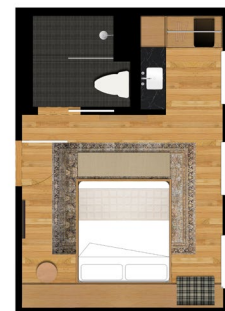






## THE KING

- king bed
- 222 – 325 sq ft
- luxury linens
- work desk
- Nespresso machine, Smeg fridge and fully stocked minibar
- 43-inch HDTV with premium channels
- complimentary high-speed wi-fi
- walk-in rain shower with Diptyque bath amenities
- in-room safe
- eclectic bespoke furniture and decor







## THE GRAND KING

- king bed
- 267 – 338 sq ft
- luxury linens
- work desk
- cozy seating area in select rooms
- Nespresso machine, Smeg fridge and fully stocked minibar
- 43-inch HDTV with premium channels
- complimentary high-speed wi-fi and in-room tablet
- walk-in rain shower with Diptyque bath amenities
- in-room safe
- eclectic bespoke furniture and artwork

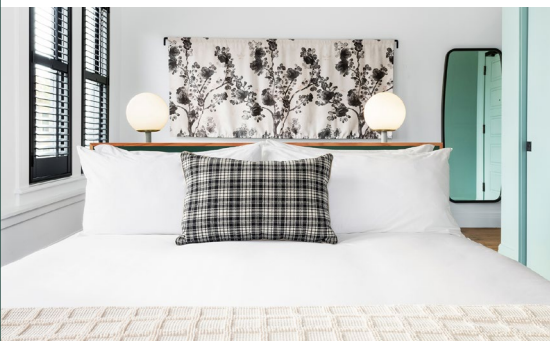
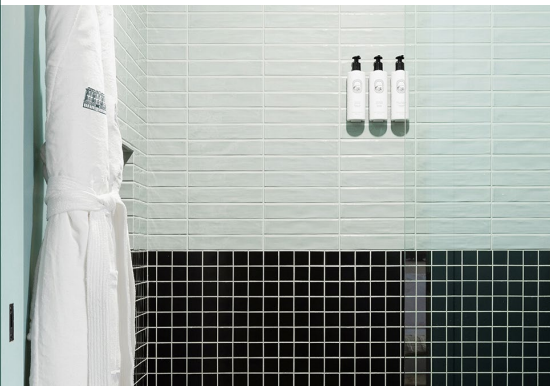






## THE DELUXE KING

- king bed
- 286 – 350 sq ft
- luxury linens
- seating area and work desk
- Nespresso machine, Smeg fridge and fully stocked minibar
- 43-inch HDTV with premium channels
- complimentary high-speed wi-fi
- walk-in rain shower with Diptyque bath amenities
- in-room safe
- eclectic bespoke furniture and artwork





## DINING & EVENTS

Hotel Grand Stark is home to Grand Amari and Little Bitter Bar by Olympia Provisions, serving hotel guests and locals alike.

### GRAND AMARI

An intimate Italian restaurant focusing on traditional approaches to the cuisine using seasonal produce.

*Open Sunday-Thursday 5pm-9pm,  
Friday & Saturday 5pm-10pm.*

### LITTLE BITTER BAR

A casual yet chic lobby bar featuring fresh cocktails, antipasta, pizza, and aperitifs.

*Open 4pm-10pm daily.*







COMMON SPACES & EXTERIOR





COMMON SPACES & EXTERIOR



THANK YOU



**HOTELGRANDSTARK.COM**

509 SE Grand Ave | Portland, OR 97214

For inquiries, please email [sales@hotelgs.com](mailto:sales@hotelgs.com)

503.231.0101 | [@hotelgrandstark](https://www.instagram.com/hotelgrandstark)