



2015

# PARADE of HOMES

DURHAM, ORANGE, AND CHATHAM COUNTIES

**FREE SELF-GUIDED NEW HOME TOUR  
OCTOBER 3-4; 9-11; 16-18 • NOON-5 PM**



**HOMES PRICED FROM \$185K AND UP**

DOCParadeofHomes.com



Home Tour App



919.493.8899 • www.hbadoc.com

## INSIDE:

- SPECIAL FEATURES, EXTERIOR ELEVATIONS AND FLOOR PLANS FOR EACH TOUR HOME
- AT-A-GLANCE LOCATOR MAP

SPONSORS

**STOCK Building Supply**

**The Herald-Sun**





## LIVE YOUR DREAMS CIMARRON STYLE

*"We truly love our new home. The whole experience was wonderful and exciting. You don't build houses, you build homes."*

— DAN BRENNER

For over 30 years, Cimarron has been building value-packed custom and production homes throughout the Triangle and Triad. If you're seeking a home that's **beautiful, functional, energy efficient,** and **environmentally responsible,** look no further. Whether we build on your lot or ours, Cimarron will build the home you've always wanted, exactly the way you want it. Contact us today to learn more!



919.880.4183 | [CIMARRONHOMES.COM](http://CIMARRONHOMES.COM)

© 2015 Cimarron Homes.



WHAT WILL INSPIRE YOU...AND YOUR NEXT DISH?



**A thoughtful kitchen design** that includes the redesigned new line of KitchenAid appliances. KitchenAid boldly blends professionally-inspired styling with sleek touches, creating beauty with superior functionality. Let Reico Kitchen & Bath and KitchenAid help you create a kitchen that inspires it all!

**KitchenAid®**  
FOR THE WAY IT'S MADE.®

2728 Capital Blvd., Suite 100, Raleigh, NC 27604 • 919.878.7744

**Reico**  
**KITCHEN & BATH**  
[www.reico.com](http://www.reico.com)



## Close to everything, yet far from the ordinary

- 40 new lots
- .69 to 1.1 acres
- Custom built  
by Loyd Builders

Minutes from:

- Southpoint Mall
- Jordan Lake
- RTP
- RDU International Airport

**Loyd  
Builders**  
[www.loydbuilders.com](http://www.loydbuilders.com)



  
**COLVARD  
FARM S**



Sales & Marketing by Sherry Cutrer Realty | [www.colvardfarms.com](http://www.colvardfarms.com) | 919.361.9457



**LAURA GRACE**  
(COLDWELL BANKER HOWARD  
PERRY & WALSTON)  
**PARADE CHAIR**



**RANDY LANOU**  
(BUILDSense)  
**HBADOC PRESIDENT**

# Welcome to the 32nd Annual Parade of Homes

The 32nd Annual Parade of Homes, an event of The Home Builders Association of Durham, Orange & Chatham Counties (HBADOC) features 56 homes this year, representing a wide range of styles. On behalf of all the members of our association, we are proud to present this opportunity for you to see the best new homes in our area.

This showcase of newly constructed homes by local builders is free and open to the public. There are 24 homes in Chatham County, 19 homes in Durham County, 12 homes in Orange County, and one home in Alamance County. The event takes place from Noon–5 pm October 3–4, 9–11 and 16–18, 2015. Prices range from \$185,000 to over \$1.5 million. Special thanks to **Stock Building Supply** and **The Herald-Sun** for their sponsorship of this event.

When touring the homes, don't just look at the interior design — you'll miss your chance to learn! A lot of thought goes into deciding which features and products to include in these homes. Many homes



include features such as radiant heated floors, energy-efficient lighting and plumbing fixtures, WiFi security and stereo technology, screened porches, inside and outside fireplaces, and dual water heaters. Each home on the tour will have a representative present to answer any questions.

If you haven't done so already, be sure and check out the HBA website ([www.hbadoc.com](http://www.hbadoc.com)) and click on the Parade of Homes logo. There, you will find a link to download the free Mobile Media App for your smart phone as well as an online guide of the Parade homes.

The HBADOC is proud to produce the Parade of Homes and we invite the public to come and see first-hand the changes that are taking place within the new home industry. We are also proud to be a part of a region that has consistently ranked as one of the best places in America to live.

We also thank and acknowledge the work of the people whose names are listed below. The Parade of Homes Committee and the various vendors who work to produce this book are tireless in their efforts to make sure you are presented with a first-class product.

**seventeen** beautiful homes on this year's Parade are being independently verified by an accredited third party and will receive National Green Building Standard (NGBS) certification. This certification focuses on six key areas: Site Design, Preparation & Development, Resource Efficiency, Energy Efficiency, Water

Efficiency, Indoor Environmental Quality and Operation, Maintenance & Homeowner Education.

This logo appears on their entry pages.



**Home Innovation**  
NGBS GREEN CERTIFIED™

## PARADE OF HOMES COMMITTEE

**Laura Grace, Chair**  
Coldwell Banker  
Howard Perry & Walston  
**Carol Anne Colone**  
New Home Guide  
**Dan Cunningham**  
Bank of America Mortgage  
**Jim Graves**  
David Weekley Homes  
**Beth Hall**  
Ryland Homes

**Larry Howard**  
Talbert Building Supply  
**Teresa Mansell**  
Carolina Bank  
Residential Mortgage  
**Stephanie Miller**  
Drees Homes  
**Rebecca Newsome**  
Constructive Marketing  
**Debbi Nichols**  
Synergy In Print

**Darrell Patterson**  
Lighthouse Garage Doors  
**Lindy Sfirlea**  
Meritage Homes  
**Lisa Skumpija**  
Absolute Construction  
& Development, LLC  
**Florica Shepherd**  
Caliber Home Loans

**Carolyn Szabo**  
Branch Banking & Trust  
**Janice Ward**  
JW Distributors, Inc.  
**Anne Watson**  
SunTrust Mortgage

## PARADE VENDORS

**Synergy in Print**  
Debbi Nichols  
Magazine Publisher  
**Hart Palmer Design**  
Magazine Design/Production  
**Tar Heel Trophy**  
Plaques  
**Camelot Design Group**  
Renderings, Floorplans  
**AJ Young Illustrations**  
Renderings, Floorplans  
**Sign-A-Rama**  
Signage

## HBADOC STAFF

**Holly Fraccaro**  
Executive Vice-President  
**Julie Carrow**  
Director of Association Services  
**Kristina Ellis**  
Director of Operations  
**Stephanie Cornette**  
Director of Membership  
**Sarah Magner**  
Office Manager



Home Builders Association of Durham, Orange, and Chatham Counties

20 W. Colony Place, Suite 180, Durham, NC 27705

919-493-8899 919-490-7963 (Fax) • [www.hbadoc.com](http://www.hbadoc.com)



**PUBLISHER**  
Debbi Nichols  
Synergy in Print  
[dnichols4@nc.rr.com](mailto:dnichols4@nc.rr.com)  
919.605.4430



**DESIGNER**  
Hart Palmer Design  
for Synergy in Print  
[hpalmer@mebtel.net](mailto:hpalmer@mebtel.net)

All information pertaining to the homes in the Parade has been provided by the Home Builders Association. Publisher is not responsible for the accuracy of this information. The HBADOC is not serving as a broker or soliciting offers to purchase houses identified in the book. Nothing in this publication should be taken as an offer to sell any house, and no price listed herein should be relied upon for decisions regarding the purchase of any home.

# HOMES LISTED BY NEIGHBORHOOD

## GREEN TYPE DESIGNATES GREEN CERTIFIED HOMES

The HBADOC is not serving as a broker or soliciting offers. Prices subject to change without notice. Prices deemed reliable, but not guaranteed.

| NEIGHBORHOOD                | COUNTY         | PRICE             | MAP# | NEIGHBORHOOD                  | COUNTY        | PRICE             | MAP# |
|-----------------------------|----------------|-------------------|------|-------------------------------|---------------|-------------------|------|
| Arbor Creek .....           | Alamance ..... | \$293,057 .....   | A1   | Forest Ridge .....            | Orange .....  | \$436,254 .....   | O3   |
| Briar Chapel .....          | Chatham .....  | \$697,479 .....   | C5   | Hanover Pointe .....          | Durham .....  | \$210,260 .....   | D13  |
| Briar Chapel .....          | Chatham .....  | \$400,000 .....   | C6   | Harrison Pond .....           | Chatham ..... | \$549,900 .....   | C17  |
| Briar Chapel .....          | Chatham .....  | \$297,942 .....   | C7   | Jordan at Southpoint .....    | Durham .....  | \$434,100 .....   | D1   |
| Briar Chapel .....          | Chatham .....  | \$511,349 .....   | C8   | Lystra Preserve .....         | Chatham ..... | \$825,000 .....   | C4   |
| Briar Chapel .....          | Chatham .....  | \$279,780 .....   | C9   | MidTowne at Meridian .....    | Durham .....  | \$220,585 .....   | D8   |
| Briar Chapel .....          | Chatham .....  | \$399,900 .....   | C10  | Montclair .....               | Durham .....  | \$599,900 .....   | D16  |
| Briar Chapel .....          | Chatham .....  | \$485,000 .....   | C11  | N/A .....                     | Durham .....  | \$195,000 .....   | D15  |
| Briar Chapel .....          | Chatham .....  | \$499,197 .....   | C12  | Oaks at Lyons Farm .....      | Durham .....  | \$450,000 .....   | D2   |
| Briar Chapel .....          | Chatham .....  | \$496,400 .....   | C13  | Orchard Ridge .....           | Durham .....  | \$212,810 .....   | D12  |
| Briar Chapel .....          | Chatham .....  | \$384,900 .....   | C14  | Page Park .....               | Durham .....  | \$249,090 .....   | D5   |
| Briar Chapel .....          | Chatham .....  | \$272,170 .....   | C15  | Pleasant Green Farms .....    | Orange .....  | \$885,000 .....   | O6   |
| Brightleaf .....            | Durham .....   | \$355,000 .....   | D11  | Powell Place .....            | Chatham ..... | \$331,517 .....   | C24  |
| Burch Kove .....            | Orange .....   | \$314,900 .....   | O9   | Stonegate .....               | Durham .....  | SOLD! .....       | D17  |
| Cabe Crossing .....         | Orange .....   | \$650,000 .....   | O7   | The Cloisters at Auburn ..... | Durham .....  | \$258,015 .....   | D9   |
| Cardinal Oaks .....         | Durham .....   | \$248,846 .....   | D18  | The Hamptons .....            | Chatham ..... | \$949,900 .....   | C21  |
| Chamberlyne .....           | Durham .....   | \$463,365 .....   | D10  | The Hamptons .....            | Chatham ..... | \$1,650,000 ..... | C22  |
| Chapel Ridge .....          | Chatham .....  | \$429,900 .....   | C18  | The Hamptons .....            | Chatham ..... | \$869,900 .....   | C23  |
| Chapel Ridge .....          | Chatham .....  | \$471,000 .....   | C20  | The Hills at Southpoint ..... | Durham .....  | \$ 587,995 .....  | D4   |
| Claremont .....             | Orange .....   | \$590,000 .....   | O12  | Treyburn .....                | Durham .....  | \$355,000 .....   | D19  |
| Claremont South .....       | Orange .....   | \$677,859 .....   | O11  | Vistas at Chapel Ridge .....  | Chatham ..... | \$329,140 .....   | C19  |
| Colvard Farms .....         | Durham .....   | \$1,299,000 ..... | D3   | Waterstone Estates .....      | Orange .....  | \$734,052 .....   | O4   |
| Corbin Creek Woods .....    | Orange .....   | \$525,000 .....   | O1   | Waterstone Terraces .....     | Orange .....  | \$262,990 .....   | O5   |
| Creekside at Bethpage ..... | Durham .....   | \$428,723 .....   | D6   | Westfall .....                | Chatham ..... | \$545,990 .....   | C1   |
| Creekside at Bethpage ..... | Durham .....   | \$312,227 .....   | D7   | Westfall .....                | Chatham ..... | \$370,000 .....   | C2   |
| Dunhill .....               | Orange .....   | \$699,900 .....   | O8   | Westfall .....                | Chatham ..... | \$957,710 .....   | C3   |
| Fieldstone .....            | Chatham .....  | \$595,900 .....   | C16  | Winmore .....                 | Orange .....  | \$524,113 .....   | O10  |
| Forest Ridge .....          | Orange .....   | \$669,000 .....   | O2   | Winsford at The Park .....    | Durham .....  | \$185,000 .....   | D14  |



## Build a Customized Drees Home Anywhere

Whether you already own a lot, need help finding a site, or have a particular property in mind, Drees Homes makes it easy to build a customized home anywhere you want to live.

- Firm contract pricing
- Save thousands with no construction loan

- One stop selections process
- Formal follow-up program

Homes from the \$300s plus home site

For a free lot evaluation or to learn more, call 1-866-246-3135

[dreeshomes.com](http://dreeshomes.com)

**Drees**  
HOMES<sup>SM</sup>  
build on your lot

**LENNAR®**

# Next Gen® - The Home Within A Home®

**Private Entrance • 1 Bedroom  
• 1 Bathroom • Kitchenette • Living Area • Laundry**



*Ultimate Home Office • Art Studio • Music Room • Guest Suite*



*Two homes.  
Under one roof.*



## EVERYTHING'S INCLUDED®

All the add-ons and extras a homebuyer could want, simply included.



**EVERYTHING'S  
INCLUDED®**

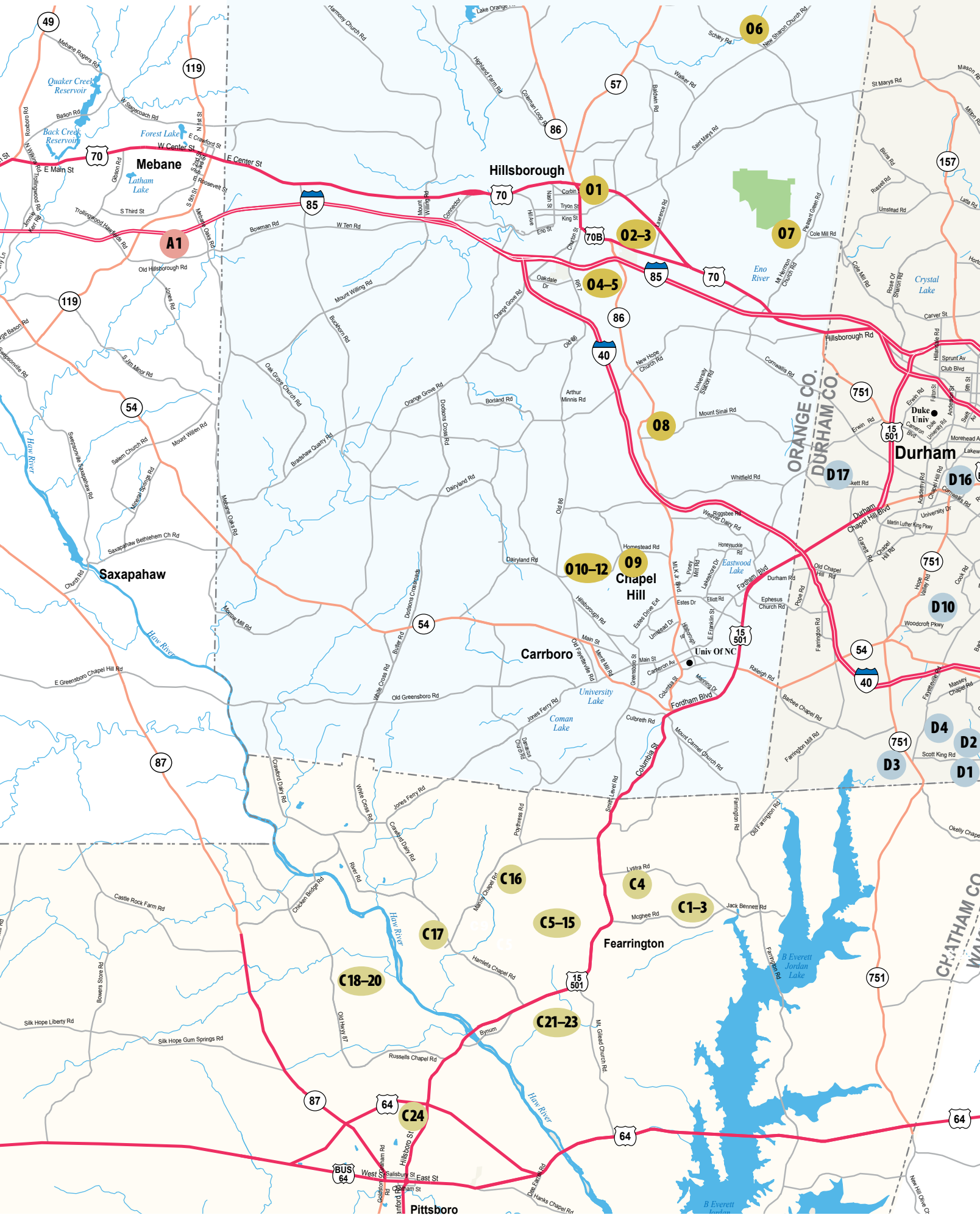
**LENNAR.COM**

**919-337-9420**

**THE ONLY <sup>A+</sup> Builder** BIG BUILDER'S 2015 PUBLIC BUILDER REPORT CARD

Please see your New Home Consultant and home purchase and sale agreement for actual features designated as an Everything's Included® feature, additional information, disclosures, and disclaimers relating to your home and its features. The specific features in a home may vary from home to home and from one community to another. We reserve the right to substitute equipment, material, appliances and brand names with items of equal or higher, in our sole opinion, value. Color and size variations may occur. Plans and elevations/renderings are artist's concept and may contain options or features which are not standard on all models. Pictures are solely for illustrative purposes and should not be relied upon. The prices of our homes, included features, and available locations are subject to change without notice. Features, amenities, floor plans, elevations, square footage and designs vary per plan and community and are subject to changes or substitution without notice. Images may contain options which are not standard on all models. Contact a New Home Consultant at Lennar for details. Garage sizes may vary from home to home and may not accommodate all vehicles. Plans are artist's concept and may contain options or features which are not standard on all models. While Supplies Last. Void Where Prohibited By Law. Please see the actual home purchase agreement for additional information, disclosures and disclaimers relating to the home and its features. \*The information from Builder 100 is used or reprinted with permission of Hanley Wood Media, Inc. Copyright © 2015 Lennar Corporation. All rights reserved. Lennar, the Lennar logo, Next Gen® - The Home Within A Home®, the Next Gen® logo and the Everything's Included® logo are registered service marks or service marks of Lennar Corporation and/or its subsidiaries. (13228) 8/24/15





**GREEN TYPE DESIGNATES GREEN CERTIFIED HOMES**

This map illustrates the Research Triangle region, highlighting major transportation corridors and key locations. Major highways shown include I-40, I-540, I-85, I-95, US-501, US-70, and NC-98. Cities depicted are Butner, Morrisville, Cary, and Apex. Landmarks such as Research Triangle Park, NC Central University, and various lakes (e.g., Lake Johnson, Lake Raleigh) are marked. The map also shows numerous local roads, bridges, and geographical features like the Neuse River and the Pamlico River.

# Now at The Appliance Center



## LAST CHANCE for 2015

**Thermador** ★  
REAL INNOVATIONS FOR REAL COOKS®

*Don't Miss it!*



## 1-2-FREE DISHWASHER

Buy a Range... the  
dishwasher is free!

A \$1299 value!

### The Best Appliances in The World Are at The Appliance Center!



The **BENCHMARK** that  
touches the soul



## BOSCH

Invented for life

Wall ovens with **SIDE  
SWING DOORS**—for  
those who LOVE TO COOK

ADA applications under counter!

*Ergonomic Perfection!*

More than 50 Years of Service to the Triangle

**RELIABILITY • DEPENDABILITY • DURABILITY**

*Locally Owned & Operated — We're here when you need us.*

# THE APPLIANCE CENTER

BUILDER DISTRIBUTOR

3636 Shannon Road • Durham, NC 27707 • (919) 403-2323 • [www.appliancecenter.biz](http://www.appliancecenter.biz)

Hours: Monday, Wednesday, Thursday, Friday 8-5; Tuesday 8-7

# Expect *more.*



## More space. More luxury. More energy efficiency.

Experience the spacious floorplans, inspiring designs and timeless architecture that has become NVHomes' trademark. Plus, each and every NV home is ENERGY STAR®-tested and certified, reducing your energy bills by over 30%.\* NVHomes has taken luxury homebuilding to a whole new level. Visit our designer model homes in these fine neighborhoods today.

### **Saxonbury in West Cary**

**919.387.8128**

- Estate homes from the \$580s
- Intimate, wooded community
- Wake County School District
- Only 1 mile from I-540

**Model Address:** 8504 Broderick Place, Cary, NC 27519

Located at the intersection of Green Level Church Road and Beaver Dam Road.

### **Westfall in Chapel Hill**

**919.967.9081**

- The Reserve: Ranch and 2-story homes on ½-acre homesites from the \$470s
- The Estates: 2-story homes on ½- to 1½-acre homesites from the \$610s
- Community features a resort-style pool, cabana, tot lot, turf sports field, dog park and walking trails

**Model Address:** 28 Ravens Ridge Road, Chapel Hill, NC 27517

Located on Lystra Road between 15/501 and Jack Bennett Road.



*Introducing a new level of elegance in The Triangle*

Visit our luxurious Clifton Park II model at Saxonbury and Regent's Park II model at Westfall today!

**NVHomesParade.com**

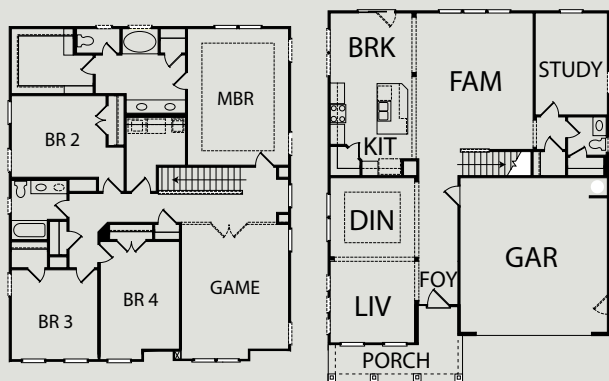
Brokers Warmly Welcomed

\*According to the EPA, ENERGY STAR® Certified homes are typically up to 30% more efficient than standard new homes. Prices and availability subject to change without notice. See a Sales and Marketing Representative for details.



**TRYON** 3,054 SF \$293,057  
**Arbor Creek: 1001 Longleaf Place, Mebane**  
 Ryland Homes 919-474-0309  
[www.Ryland.com](http://www.Ryland.com)  
 Sales: Ryland Homes 919-568-0310  
 Plan by Ryland Homes

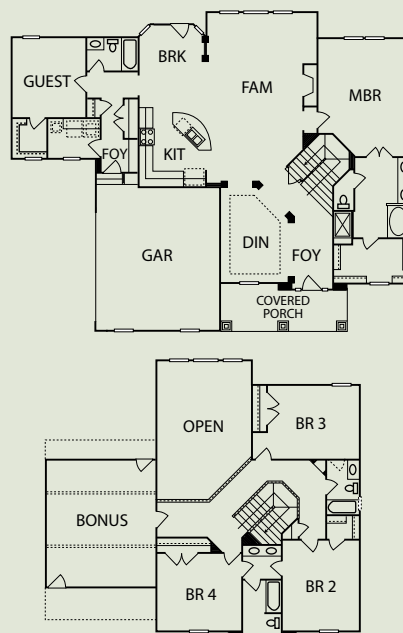
- Beautiful exterior architectural brick and stone detail, ideal open floor plan with loads of light
- Warm 5" hardwood floors throughout the first floor
- Family room with stone fireplace
- Cooks kitchen with double-oven gas stove, granite countertops with subway tile, unique kitchen island great for extra storage and entertaining
- Kitchen nook maximizes space with built-in seating
- Master retreat with gorgeous ceiling detail
- Soothing master bath with tiled shower walls and granite countertops
- Loft offers an extension of family living space
- Entertaining outdoor living with stone patio, seating wall and grill



**DIRECTIONS:** From I-40/I-85: Take Exit 154 (Mebane Oaks Road). Turn towards the Sheetz gas station and go past Sheetz and Walmart. Turn right at the flashing light onto Old Hillsborough Road. Arbor Creek is one mile down on the right.

**BRADLEY G** 3,490 SF \$525,000  
**Corbin Creek Woods: 502 Mitchell Street, Hillsborough**  
 Drees Homes 919-844-9288  
[www.dreeshomes.com](http://www.dreeshomes.com)  
 Sales: Drees Homes 919-309-1125  
 Plan by Drees Homes

- Dramatic entrance with signature columns
- Two-story family room with wall of windows
- Large kitchen island — great for entertaining
- Floor-to-ceiling decorative fireplace trim
- Luxurious owner's suite
- Custom paint and elegant trim detail
- Oversized stainless steel hood vent
- Custom cabinet built-ins
- DreeSmart Energy Conservation Innovation
- Enormous walk-in closet



**DIRECTIONS:** Take I-85 S to exit 164 toward Hillsborough, to right on S. Churton St/Old NC-86, to right on E. Corbin Street to community entrance on left. First house on the right.

# New SINGLE FAMILY HOMES in the heart of CHAPEL HILL



At Stanley Martin Homes - Your Life is Our Blueprint. Our homes at **Winmore** are designed with your lifestyle in mind – built for the way your family lives, today and tomorrow. ***It's how we make a house your home.***



## WINMORE - from the upper \$300's

- Spacious single family homes featuring up to 3,392 square feet.
- Located in the walk zone for a sought after school district including Seawell Elementary, Smith Middle and Chapel Hill High.
- Enjoy a village lifestyle with endless amenities including a pool, playground, and 30 acres of open space with over two miles of walking trails.
- New homes at Winmore feature endless Green Living features that will save you money and help protect our environment!

Call **919.414.4942** today to make an appointment and tour our Move-In-Ready Homes!

Visit **StanleyMartin.com** to learn more about life at Winmore!



**STANLEY MARTIN HOMES**  
*Your Life is Our Blueprint*



**StanleyMartin.com** | **919.977.8760** | 4020 Westchase Blvd, Building One, Suite 190, Raleigh, NC 27607  
MHBR No. 3588 | ©Stanley Martin Homes | \*Prices, features and availability subject to change without notice. Number of bedrooms and bathrooms vary by homesite. Options and incentives do not apply to all communities, lots, and house types. Photos shown may be of similar homes. Certain restrictions apply. Please see a Neighborhood Sales Manager for details.

**GREEN  
LIVING**  
STANLEY MARTIN HOMES





**EVAN MANOR** 4,006 SF \$669,000  
Forest Ridge: 301 Clarkson Ridge Lane, Hillsborough

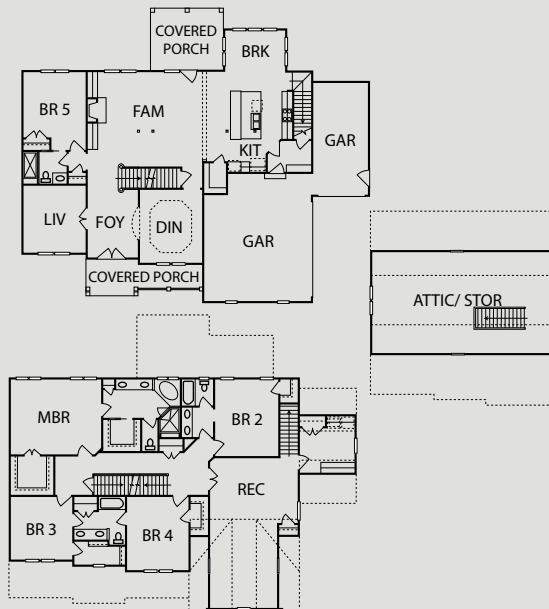
Wardson Construction, Inc. 919-462-0775  
www.Wardson.com

Sales: Chase Properties, Inc. 919-245-8411

Plan by Westpark Designs

- Architecturally detailed elevation
- Gourmet kitchen with large pantry
- Formal living and dining rooms
- First floor guest room
- Custom built-ins and trim package
- Spacious master retreat with two walk-in closets

- Each bedroom has en-suite bath
- Mud room with bench
- Walk-up attic for storage
- Large rec room with closet



**DIRECTIONS:** From Hwy 147 in Durham, take I-85 exit. Take the second NC-86 exit. Make a right onto Hwy 70-A. Take left onto Quincy Cottage Road (into Forest Ridge). Turn left onto Clarkson Ridge Lane. House on the corner.



**HILLIARD DWR** 2,892 SF \$436,254  
Forest Ridge: 1102 Quincy Cottage Road, Hillsborough

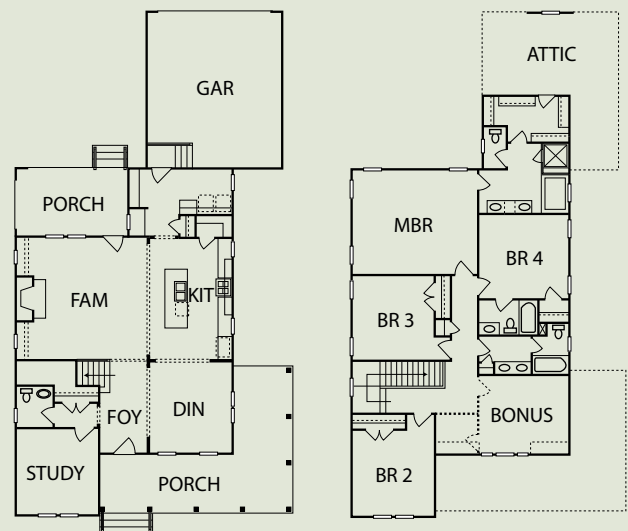
Saussy Burbank 919-781-5225  
www.saussyburbank.com

Sales: Chase Properties Inc. 919-245-8411

Plan by Saussy Burbank

- Site-finished oak hardwood floors
- First-floor guest suite
- 8' interior doors on first floor
- Stainless steel appliances, quartz tops and farm sink in kitchen
- Custom craftsman-style trim details
- Gas log fireplace with built-ins on both sides

- Wrap-around porch
- Large laundry, mudroom
- NGBS Green Home and ENERGY STAR® Certified
- Member, Triangle Builders Guild



**DIRECTIONS:** From Raleigh and Durham: Take NC-147 North and I-85 South. Take exit 165 from I-85 South. Turn right onto NC-86 North. Turn right onto US Hwy-70 BUS East. Arrive at Forest Ridge.

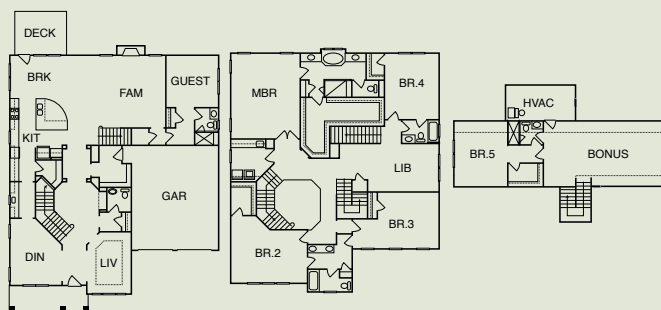


**O  
4**

**THE HASTINGS**      **5,203 SF**      **\$734,052**  
**Waterstone Estates: 207 Papyrus Place, Hillsborough**  
 Ashton Woods      919-232-0039  
[www.AshtonWoods.com](http://www.AshtonWoods.com)  
 Sales: Waterstone Community Team      919-235-6655  
 Plan by Ashton Woods

- Grand two-story foyer with rotunda and curved staircase
- Kitchen designed with commercial appliances, painted gray cabinets, and oversized curved island
- Custom study built-ins with puck lighting
- Elaborate wood trims throughout
- Open second floor loft equipped with built-in book shelves and rolling ladder
- Third floor workout space with mirrors, grab bar, and equipment storage built-ins
- Third floor bonus with dry bar, custom entertainment center, and surround sound system
- Laundry room with custom shelving, sink, and efficient design
- Butlers pantry features sink, wine chiller, and walk-in kitchen pantry
- Environments for Living Certified

ENVIRONMENTS FOR *Living*®



**DIRECTIONS:** From I-40W: Take Exit 261 towards Hillsborough. Turn right onto Old NC-86. First right onto Waterstone Drive. Left onto College Park Road. Community is just ahead at the end of the street. Left on College Park Road. Travel .55 miles to roundabout. Take first right off roundabout onto Cates Creek Parkway. Take first right onto Papyrus Place. Home is on the left.

Certified Green Professional™ of the Year



**Collins**  
DESIGN-BUILD

919.422.2818 • [www.collinsdesignbuild.com](http://www.collinsdesignbuild.com)

HISTORIC LOCATION.  
MODERN COMFORT.

NEW HILLSBOROUGH CUSTOM HOMES  
FROM THE \$300 - \$700s BY

**WARDSON**  
CONSTRUCTION, INC.



**LEGACY**  
CUSTOM HOMES

ARTISAN AND TOWNHOMES FROM THE \$200's BY

**SAUSSY BURBANK**



**FOREST RIDGE**

CRESCENT COMMUNITIES

[LIVEATFORESTRIDGE.COM](http://LIVEATFORESTRIDGE.COM) | 855.847.5956

Obtain the Property Report required by Federal law and read it before signing anything. No Federal agency has judged the merits or value, if any, of this property. Crescent Communities Realty, LLC. © 2015.

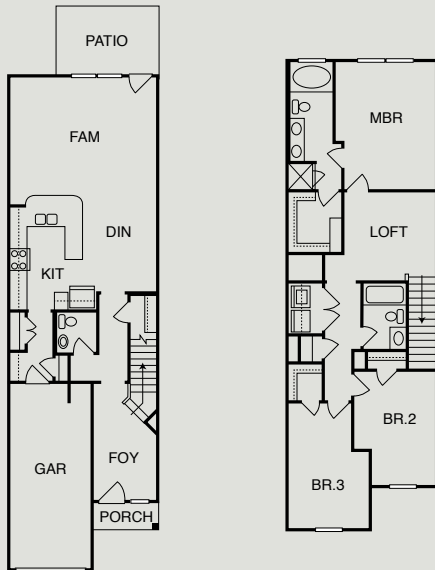


05

**THE TEAGAN** 1,682 SF \$262,990  
**Waterstone Terraces: 125 Rubrum Drive, Hillsborough**  
 Ashton Woods 919-232-0039  
[www.AshtonWoods.com](http://www.AshtonWoods.com)  
 Sales: Waterstone Community Team 919-235-6655  
 Plan by Ashton Woods

- Designer exterior design and color scheme
- Kitchen countertop overhang layout
- Custom built-ins in family room
- Second floor loft design and décor
- Master bedroom custom headboard trim feature and lighting
- Designer dining room lighting
- Upstairs bedroom/study design with customized office built-ins
- Grand and spacious entry design
- Environments for Living Certified

ENVIRONMENTS FOR *Living*



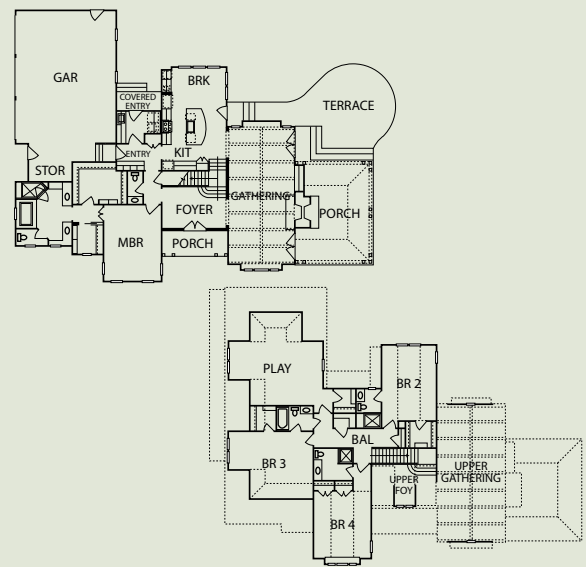
**DIRECTIONS:** From I-40W: Take Exit 261 towards Hillsborough. Turn right onto Old NC-86. First right onto Waterstone Drive. Left onto College Park Road. Community is just ahead at the end of the street. Left onto College Park Road. Travel .5 miles and turn right on Rubrum Drive. This model home will be on the left.



06

**FARM VIEW** 3,800 SF \$885,000  
**Pleasant Green Farms: 172 Southernwood Dr, Hillsborough**  
 Winslow Custom Homes, LLC 919-557-4700  
[www.WinslowCustomHomes.com](http://www.WinslowCustomHomes.com)  
 Sales: Peak Swirls & Cavallito 919-612-3221  
 Custom Design by Hutch Johnson

- Great room with fireplace, reclaimed heart pine floors and vaulted beamed ceiling
- Main level master suite
- Luxurious master bath with floating tub and custom tile walk-in shower
- Custom kitchen with hand-crafted walnut countertop center island and hammered copper farm sink
- Covered porch with fireplace offers expansive long range views
- Three spacious bedrooms with private baths. plus large bonus room
- Over-sized three-car side entry garage
- Professionally landscaped home on ten pastoral acres
- Gated community of 500 acres committed to preservation of privacy, includes 43 acres of common area
- ENERGY STAR® builder



**DIRECTIONS:** From I-85, take Exit 170 (Hwy 70 N). Take first right onto Pleasant Green Road which crosses St Mary's Road and becomes Schley Road. Continue on Schley Road, past New Sharon Church Road, to entrance on right into Pleasant Green Farms. Home is on left.



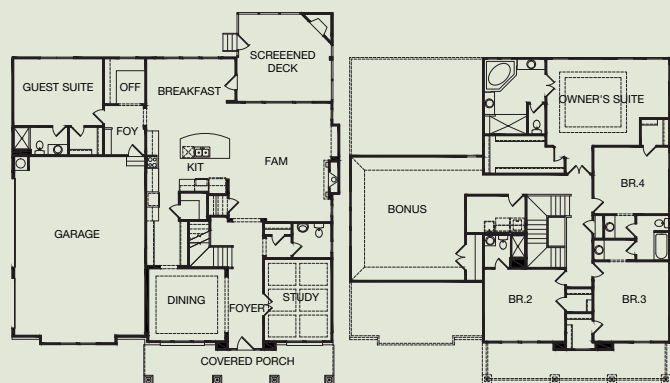
**PEMBROKE** 4,361 SF \$650,000  
**Cabe Crossing: 3557 River Stone Road, Durham**

Drees Homes 919-844-9288  
[www.dreeshomes.com](http://www.dreeshomes.com)

Sales: Drees Homes 919-309-1125

Plan by Drees Homes

- Grand home from the outside to the inside
- Amazing dark cabinets with subway tile backsplash
- Coffered ceiling in study
- First floor guest suite includes bath with tile shower and quartz vanity
- Private owner's suite with sitting area
- Owner's bath with tile tub surround and enormous shower
- Abundance of trees on gorgeous wooded home site
- Three-car side entry garage



**DIRECTIONS:** From I-85 take exit 170 (Hwy 70 Bypass) North. At first light, turn right onto Pleasant Green Road. Left on Cabe Ford Road and left onto River Stone Road. Home is on the left.



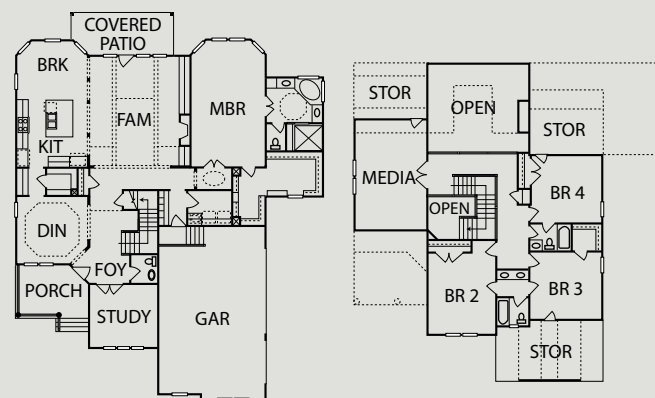
**THE DEVONBROOKE** 3,499 SF \$699,900  
**Dunhill: 6121 Moinear Lane, Chapel Hill**

David Weekley Homes 919-636-6806  
[www.DavidWeekleyHomes.com](http://www.DavidWeekleyHomes.com)

Sales: David Weekley Homes 919-659-1565

Plan by David Weekley Homes

- 2' x 6' advanced framing
- R-19 wall insulation
- 14 SEER HVAC w/ MERV 16 filter
- Tankless water heater
- Solar cooled low-E Argon gas filled windows
- 10' ceilings on first floor with 8' interior doors
- James Hardie® fiber cement siding
- Oak treads
- Beautiful limestone backsplash
- Soft gray maple cabinets
- Trendy industrial pendant lights



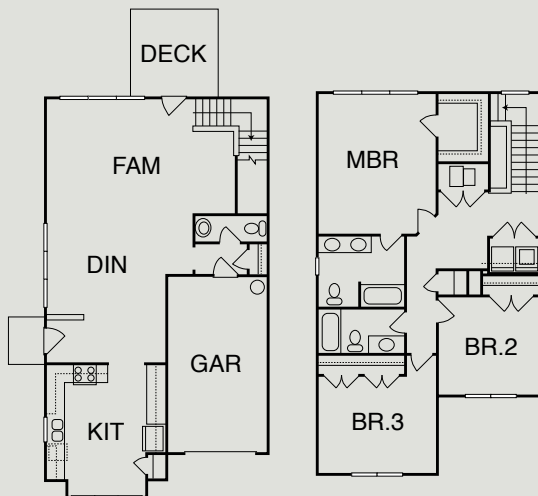
**DIRECTIONS:** From Interstate 40, take exit 266 for NC-86. Travel north on 86 and make a right on Mt. Sinai Rd. Travel 1.5 mile on Mt. Sinai Road and make a right turn on Moinear Lane. The home will be on the left.



09

**SPRUCE** 1,905 SF \$314,900  
**Burch Kove: 359 Lena Circle, Chapel Hill**  
 K. Hovnanian Homes 919-238-5166  
 www.khov.com  
 Sales: K. Hovnanian Homes 919-238-5134  
 Plan by K. Hovnanian Homes

- Luxury townhome
- Quartz countertops, gas stainless appliance package, breakfast area, large pantry and cabinet/ countertop space
- ENERGY STAR® builder
- James Hardie® color plus exterior including fascia boards and soffits
- 30-year architectural shingles
- Jeld-Wen double hung, low-E glass windows/tilt
- Dual zone gas furnace
- Community features fenced dog park, pool and cabana, large recreational playground
- Spacious master suite with walk-in closet, tray ceiling, 5' walk-in tiled shower
- Surround sound system, outdoor speakers, HDMI surround sound Link TV System
- Sealed and conditioned crawl space



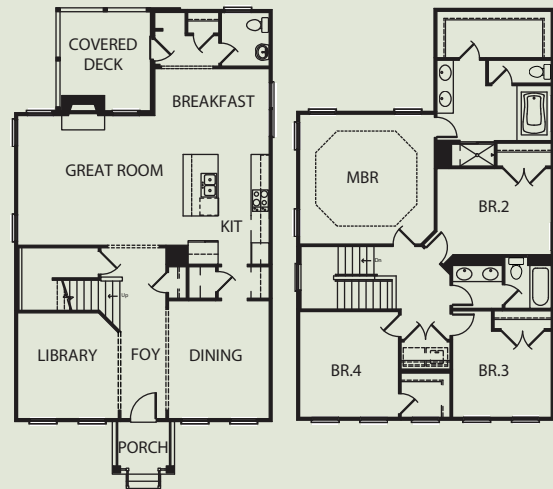
**DIRECTIONS:** Business 40 to NC-86/Chapel Hill Exit. Right on Homestead Road, Left on Seawell School Road, Right on Lena Circle.



010

**ASHLAND** 3,000 SF \$524,113  
**Winmore: 104 Jewel Drive, Chapel Hill**  
 Stanley Martin Homes 919-977-8760  
 www.stanleymartin.com  
 Sales: Stanley Martin 919-240-7582  
 Plan by Ashland

- Designer gourmet kitchen
- Site-finished hardwoods
- Sealed and conditioned crawlspace
- Stainless steel ENERGY STAR® appliances
- Granite countertops
- Upgraded plumbing and lighting fixtures including Kohler WaterSense fixtures
- Generous open floor plan designed the way you live
- H.E.R.S. rated to ensure energy efficiency
- Low-E, ENERGY STAR® windows for further energy efficiency
- R-49 attic insulation package



**DIRECTIONS:** I-40 to NC-86 South. Right onto Homestead to right turn onto Jewel Drive — model ahead on the left.

# NEW CONSTRUCTION

— Built to Suit Your Lifestyle —



Live, work, shop, and play in Chapel Hill/Carrboro's premiere neighborhood. Winmore offers an unsurpassed style of life with over 2 miles of greenway walking trails, a community pool, playgrounds and open spaces and a neighborhood salon, pilates studio and coffee shop. All convenient to town and the Triangle and within walking distance of area schools.

For new construction opportunities and to learn more about Winmore, visit [winmorecommunity.com](http://winmorecommunity.com)



**STRENGTH.**  
**SUBSTANCE.**  
**STYLE.**

Built with Ultrex® fiberglass, Integrity windows and doors are the perfect choice for any remodeling or replacement project. A smart investment for any home, their beauty endures by resisting fading, warping, chalking and cracking. They're energy efficient and low maintenance. Available in a wide range of styles, sizes and finishes, Integrity windows and patio doors are beautiful and extremely durable.



Available only at your local,  
independent Integrity dealer.  
Visit us to learn more.



Fitch Lumber & Hardware Co.  
309 N. Greensboro St.  
Carrboro, NC 27510  
919-942-3153  
[www.fitchlumber.com](http://www.fitchlumber.com)





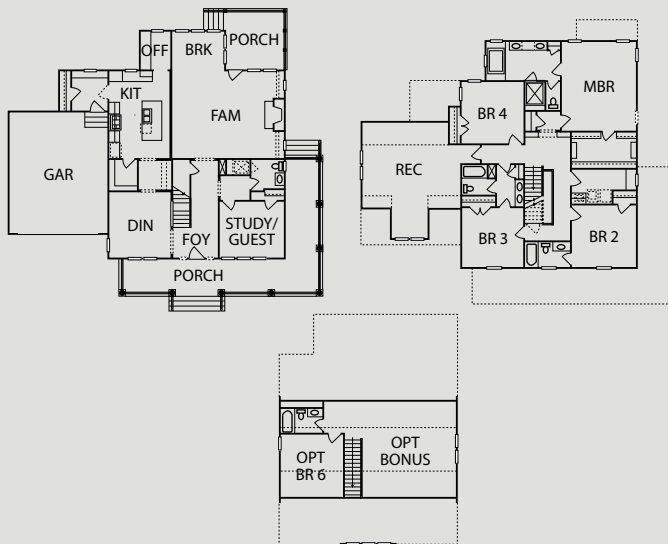
**3595 CW** **3,595 SF** **\$677,859**  
**Claremont South: 305 Claremont Drive, Chapel Hill**

Saussy Burbank 919-781-5225  
[www.saussyburbank.com](http://www.saussyburbank.com)

Sales: Saussy Burbank 919-781-5225

Plan by Saussy Burbank

- First-floor study/guest room with bath
- Finished bonus room
- Custom craftsman-style trim work throughout
- Natural site-finished hardwoods
- Spa-like master bath
- Expansive screened porch
- Butler's pantry
- Unfinished walk-up attic
- Green-built, ENERGY STAR® certified
- Member, Triangle Builders Guild



**DIRECTIONS:** From I-40, take exit 266. Turn onto NC-86 S/Martin Luther King Parkway towards Chapel Hill. In 1.7 miles, turn right onto Homestead Rd. After 2 miles, community on left. Turn on Claremont Drive. House on left.



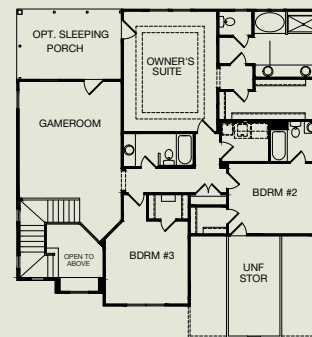
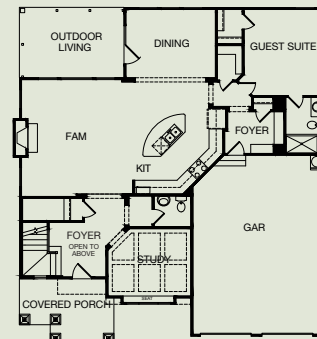
**REESE** **3,229 SF** **\$590,000**  
**Claremont: 110 Larkin Lane, Chapel Hill**

Drees Homes 919-844-9288  
[www.dreeshomes.com](http://www.dreeshomes.com)

Sales: Drees Homes 919-803-4552

Plan by Drees Homes

- Gorgeous site finished floors on first level
- Coffered ceiling in study
- Upper level sleeping porch off owner's suite
- Copious amounts of trim throughout
- Living triangle — kitchen, dining and family room connected
- Private owner's suite with spa bath
- DreeSmart Energy Conservation Innovation
- Secluded first-floor guest suite



**DIRECTIONS:** I-40 to exit 266 (NC-86). Take 86 S/MLK Jr Blvd. Turn right on Homestead Road. Go approximately 2 miles. Claremont South is on the left.



## Good Wood Plain and Simple

Imported • Reclaimed • Domestic  
Wide Plank Wood Flooring  
Precision Milled • Long Lengths  
Mill Direct Prices  
Visit our showroom

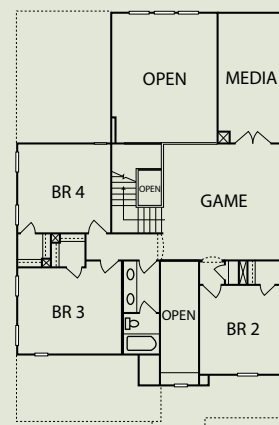
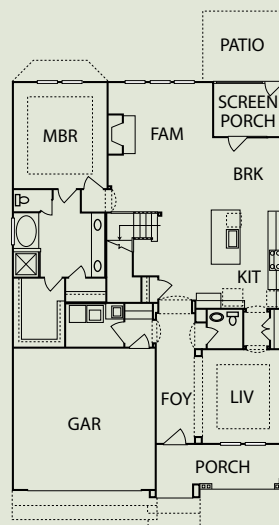


Bill Campbell • 919-414-9070  
309 N. Greensboro St, Carrboro, NC 27510  
919-942-3153  
[www.fitchwoodflooring.com](http://www.fitchwoodflooring.com)



**FAIRMONT** 2,919 SF \$434,100  
**Jordan at Southpoint: 1601 Capstone Drive, Durham**  
Meritage Homes 919-926-2624  
[www.MeritageHomes.com](http://www.MeritageHomes.com)  
Sales: Meritage Homes 877-203-4644  
Plan by Meritage Homes

- New energy-efficient home minutes from Southpoint
- Dramatic two-story family room with stunning tile fireplace
- Gourmet kitchen with gas stainless steel appliances
- Lavish first-floor owner's suite
- Spacious secondary bedrooms with walk-in closets
- Separate media room and game room with overlook
- Stylish upgraded features and finishes throughout
- Spray-foam insulation included
- Energy-efficient LED lighting and SEER 15 HVAC
- Amazing amenities: pool, cabana, outdoor fireplace



**DIRECTIONS:** From I-40 heading West: Take exit 276 toward Southpoint. Turn left onto Fayetteville Road. Turn left onto NC-751 South. Community is on your left.

# Experience the Talbert Difference!



- Complete Line of Quality Building Materials
- Installed Services
- Engineered Floor Designs
- Commercial Division 8 and 10
- Estimating Department
- Deck, Window, and Vinyl Siding Specialists
- Four convenient locations

Call or visit us today!

**TALBERT**  
BUILDING SUPPLY  
[www.talbertbuildingsupply.com](http://www.talbertbuildingsupply.com)

**Building On Service**

**ASHEBORO, NC**  
251 Ross Street  
**336-625-2195**

**CLARKSVILLE, VA**  
11799 Highway 15  
**434-374-7355**

**DURHAM, NC**  
3101 Hillsborough Rd  
**919-286-5561**

**ROXBORO, NC**  
1101 Old Durham Rd  
**336-599-1135**

**Toll Brothers**  
*America's Luxury Home Builder®*

COME **HOME** TO LUXURY



## CARY/APEX AREA

**REGENCY AT  
WHITE OAK CREEK**

**A Toll Brothers  
Active Living® Community**  
Low-maintenance ranch style homes  
from the upper \$300,000s  
**(919) 466-9300**

## SOUTHPOINT MALL AREA

**THE HILLS AT SOUTHPOINT**

**Walk-Out Basement  
Home Sites Available!**  
Luxury single-family homes  
on spacious home sites  
from the low \$400,000s  
**(919) 806-TOLL (8655)**

Visit our homes during the Parade of Homes **[TollBrothers.com/DPOH](http://TollBrothers.com/DPOH)**

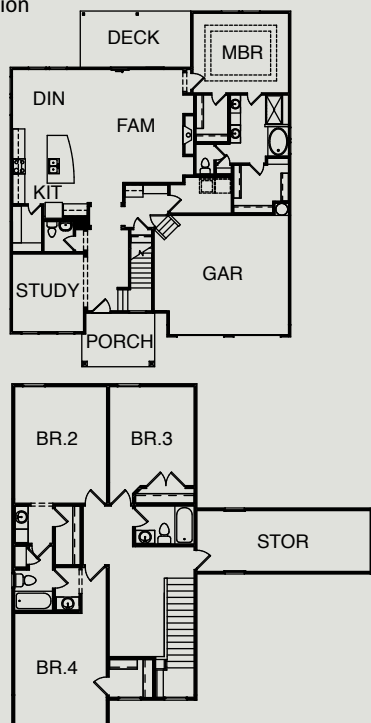
Open Sunday and Monday 1 pm - 6 pm; Tuesday-Saturday 10 am - 6 pm. Brokers Welcome. Homes Available Nationwide. Prices Subject to Change Without Notice. Photos Are Images Only and Should Not Be Relied Upon to Confirm Applicable Features. This is not an offering where prohibited by law.





**BRIANNA A** 2,795 SF \$450,000  
**Oaks at Lyons Farm: 114 Kayleen Court, Durham**  
 Drees Homes 919-844-9288  
 www.dreeshomes.com  
 Sales: Drees Homes 919-908-9333  
 Plan by Drees Homes

- 10' ceiling on first floor, 9' ceilings on second floor
- Hardwood floors on first level
- Outdoor living space porch overlooking tranquil woods
- DreeSmart Energy Conservation Innovation
- Sealed and conditioned crawl space
- Cream chiffon cabinets with striking metallic backsplash
- Close to Southpoint Mall and Herndon Park

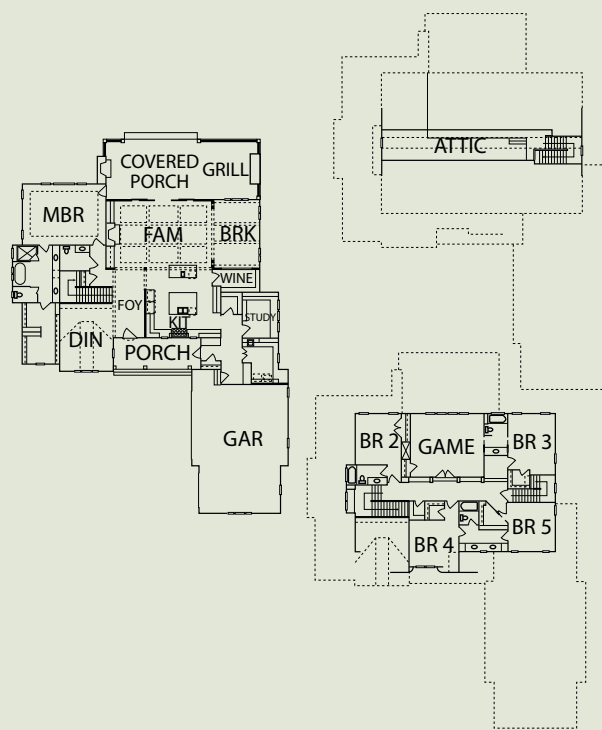


**DIRECTIONS:** From Fayetteville Road turn left on Scott King. Left into community on Goldflower Drive. Left on Silver Pine Court. Left on Silk Tree Lane. Silk Tree Lane dead ends into Kayleen Court. This home is straight ahead.



**COLVARD COTTAGE** 4,857 SF \$1,299,000  
**Colvard Farms: 103 Turner Ridge Circle, Durham**  
 Loyd Builders, LLC 919-387-1455  
 www.LoydBuilders.com  
 Sales: Sherry Cutrer Realty 919-609-5033  
 Plan by Frazier Home Design

- Quaint cottage exterior
- Beautiful outdoor living area
- Convenient location to RTP and Southpoint
- Spacious first floor master suite
- Extensive interior trim
- Custom stone wine cellar
- Vanishing phantom screens
- Insulated Zip wall sheathing
- Expansive kitchen with dining island
- Award-winning builder

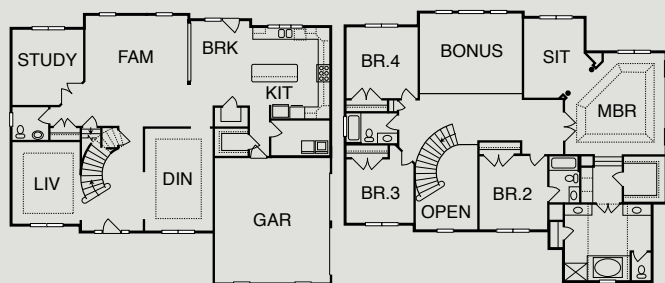


**DIRECTIONS:** I-40 W: Take Exit 274 (NC-751 South) go 2 miles past Southpoint Mall. Turn right into Colvard Farms. Take first right onto Colvard Woods Way. Home will be on the corner of Colvard Woods Way and Turner Ridge Circle.


**D  
4**

**DUKE CAROLINA**      **4,023 SF**      **\$587,995**  
**The Hills at Southpoint: 318 Swift Creek Crossing, Durham**  
 Toll Brothers      919-544-9090  
[www.tollbrothers.com/NC/The\\_Hills\\_at\\_Southpoint](http://www.tollbrothers.com/NC/The_Hills_at_Southpoint)  
 Sales: Toll Brothers      919-806-8655  
 Plan by Toll Architecture

- Stately brick home with side entry garage
- Two-story foyer anchored by a soaring curved oak staircase with iron balusters
- Upgraded hardwood floors throughout the main level
- Large open kitchen includes undercabinet lighting, upgraded granite and elegant designer detail
- Spacious playroom nestled on second floor with 10' cathedral ceiling
- Grand master suite with tray ceiling, cozy den, and his/her closets
- Huge master bath with lovely design upgrades, garden tub and oversized ultra shower
- Large princess suite
- All bathrooms feature tile surrounds, comfort height vanities and upgraded fixtures
- Tranquil, tree-lined rear yard



**DIRECTIONS:** South on Fayetteville from I-40, Left onto Swift Creek Crossing. Home will be on the right: 318 Swift Creek Crossing.

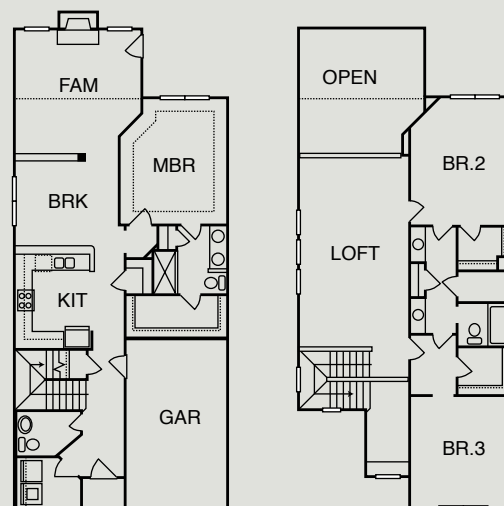

**D  
5**

**BELMONT**      **2,085 SF**      **\$249,090**  
**Page Park: 5320 Jessip Street, Durham**  
 Lennar      919-337-0240  
[www.LennarRaleigh.com](http://www.LennarRaleigh.com)  
 Sales: Lennar      984-439-3002  
 Plan by Lennar

- Live Park-centric — located less than two miles from RTP
- Three-bedroom townhome
- Master down floorplan
- Don't miss the dramatic two-story family room
- Large bonus room overlooks soaring family room
- Beautiful kitchen with open design

ENVIRONMENTS FOR *Living*®

- Lennar's Everything's Included® Home
- ENERGY STAR®/EFL Certified
- Maintenance-free townhome living
- Community amenities to include sidewalks, pool and cabana



**DIRECTIONS:** From Durham, take NC 147S to I-40E (exit 282). Left onto Page Road. Left onto Crown Parkway. Page Park is the second street on your left and the model is the first townhome on the right.

FROM I-540: Exit onto Hwy 70 W to Durham. Travel approximately 4.5 miles. Right at Miami Blvd/Mineral Springs Rd/Sherron Rd. intersection. Left at stoplight to continue on Mineral Springs Road. Left on Tanners Mill Drive. This home is on your right.

D  
6

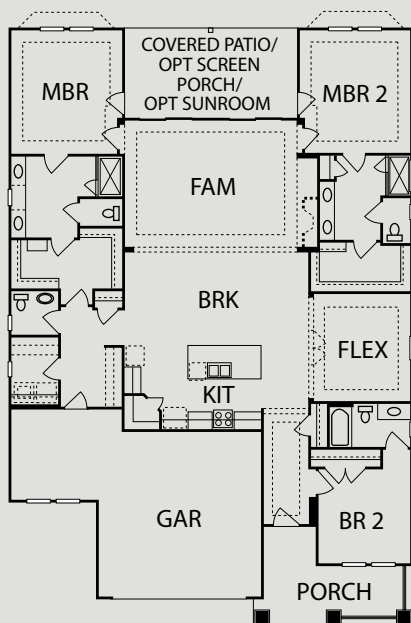
**SALINGER, PLAN 5012**      **2,425 SF**      **\$428,723**  
**Creekside at Bethpage: 6514 Crown Parkway, Durham**

AV Homes, Carolinas      919-626-3500  
 www.AVHomesInc.com

Sales: AV Homes, Inc.      919-626-3500

Plan by AV Homes, Inc.

- Granite kitchen countertops
- 36"/42" staggered kitchen cabinets
- Frigidaire kitchen appliances
- Raised 9' ceilings
- 8' doors on first floor
- ENERGY STAR® Certified
- Certainteed 30-year architectural shingle roof
- Hardiplank cement lap siding
- Wayne Dalton insulated garage door



**DIRECTIONS:** From I-40: take Exit 482 (Page Road). Turn left on Page Road (from either direction off I-40). Turn left on Chin Page Road. Turn right on Librarian Drive. Turn right on Crown Parkway. This home is on the right.

D  
7

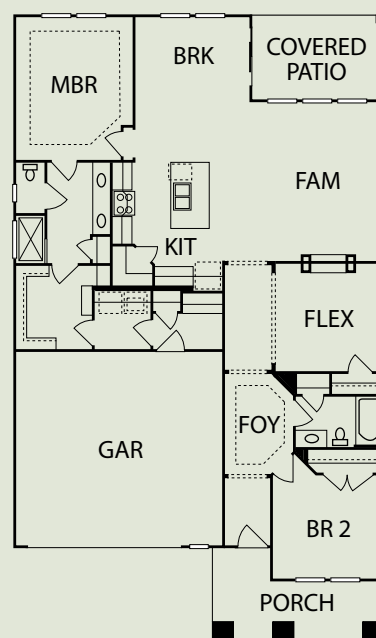
**PIONEER, PLAN 4007**      **1,660 SF**      **\$312,227**  
**Creekside at Bethpage: 6502 Crown Parkway, Durham**

AV Homes, Carolinas      919-626-3500  
 www.AVHomesInc.com

Sales: AV Homes, Inc.      919-626-3500

Plan by AV Homes, Inc.

- Granite kitchen countertops
- 36"/42" staggered kitchen cabinets
- Frigidaire kitchen appliances
- Raised 9' ceilings
- ENERGY STAR® Certified
- Certainteed 30-year architectural shingle roof
- Hardiplank cement lap siding
- Wayne Dalton insulated garage door



**DIRECTIONS:** From I-40, take Exit 482 (Page Road). Turn left on Page Road (from either direction of I-40). Turn left on Chin Page Road. Turn right on Librarian Drive. Turn right on Crown Parkway. This home is on the right.

D  
8

**BRIDGEWATER** 1,929 SF \$220,585

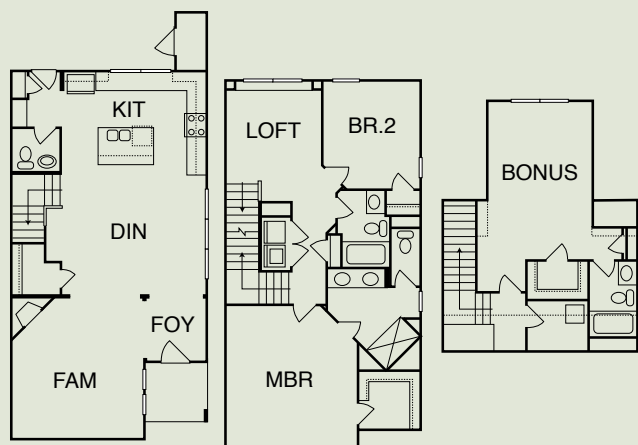
**MidTowne at Meridian: 1004 Midtowne Way, Durham**

HHHunt Homes 919-861-6380  
www.HHHuntHomes.com

Sales: HHHunt Homes 919-943-0550

Plan by HHHunt Homes

- Located off Hwy 55 and I-40
- Third floor with bath
- Low-maintenance living
- Spacious, open living area
- Granite countertops in kitchen with family-style island
- Fireplace in family room
- End unit with extra windows
- Oversized shower in master bath
- Ten minutes to The Streets at Southpoint
- Walking trail and pet park



**DIRECTIONS:** Take I-40 West towards Southpoint Mall, exit 278 onto Hwy 55 North. Turn left onto Meridian Parkway, turn left onto Exchange Place. Neighborhood is located on the left.

D  
9

**BELLA A** 1,824 SF \$258,015

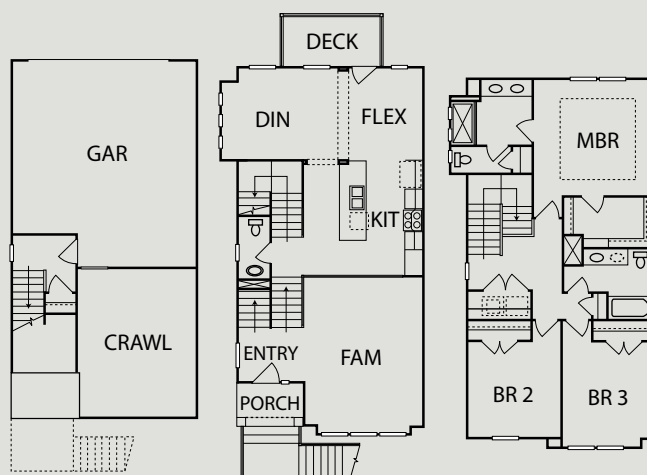
**The Cloisters at Auburn: 601 Mallory Lane Unit 4, Durham**

Mungo Homes 919-303-8525  
www.mungo.com

Sales: Mungo Homes 919-294-9992

Plan by Mungo Homes

- Two-car garage
- Hardwoods on entire main level
- Oak staircase from first to second floor
- Granite kitchen countertops
- Tile kitchen backsplash
- Sunken living room with high ceilings and brick accent wall
- Music port with two speakers
- Tankless water heater
- Open stair railings
- Wooden privacy deck



**DIRECTIONS:** Take I-40 to Durham. Fayetteville Road (exit 276). Go 1.3 miles North and turn right on Woodcroft Parkway. Go 1.2 miles and cross over Barbee Road. Turn right on Pebble Creek Crossing. The Cloisters are on your left.



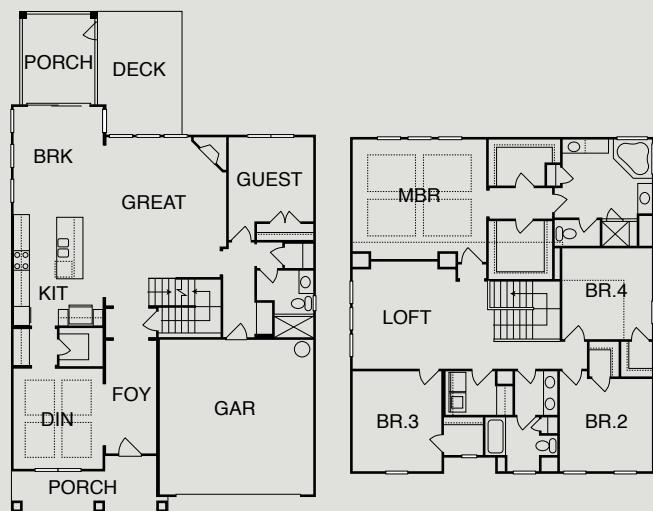
**PEMBERTON** 3,835 SF \$463,365  
**Chamberlynn: 129 Shadow Hawk Drive, Durham**

Standard Pacific Homes 919-465-5917  
 standardpacifichomes.com

Sales: Standard Pacific Homes 919-321-0806

Plan by Standard Pacific Homes

- Basement features a screened porch
- First floor guest suite with full bath
- Gourmet kitchen with gas cooktop
- His and hers walk-in closets
- Fireplace with upgraded mantle
- Breakfast room extension
- Painted maple cabinets with upgraded hardware
- Granite in kitchen, owner's bath and pantry
- Illusion shower enclosure in owner's bath
- 5" hardwood floors in first floor living areas



**DIRECTIONS:** From I-40: take Exit 274, go North on Highway 751. At the intersection with Highway 54, stay on 751 N by veering right (also called Hope Valley Rd.) Drive ½ mile, take a right at light onto S. Roxboro Street. Drive 1.6 miles, take a right onto Juliette Drive. Drive ½ mile, take a right onto Cook Road. Take first right onto Victorian Oaks Drive (entrance into Chamberlynn). Turn left onto Shadow Hawk Drive: this home will be on your left.



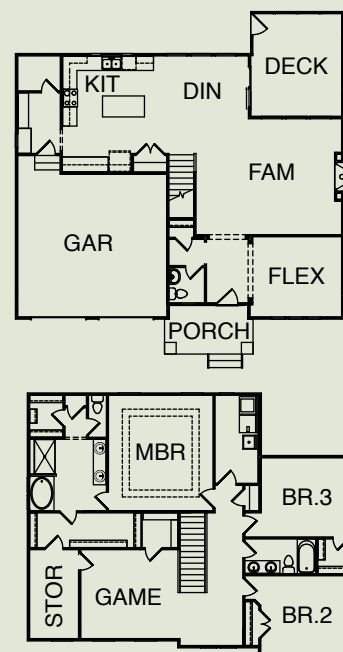
**MADELYNN A** 2,776 SF \$355,000  
**Brightleaf: 103 Plano Drive, Durham**

Drees Homes 919-369-1273  
 www.dreeshomes.com

Sales: Drees Homes 919-596-9513

Plan by Drees Homes

- Open living triangle — family room, kitchen and dining room
- Tons of storage and huge closets
- Amazing view of woods
- Sealed and conditioned crawl space
- Chiffon cabinets with granite countertops
- DreeSmart Energy Conservation Innovation
- Swim, tennis and clubhouse community



**DIRECTIONS:** From HWY 70 turn on Sherron Rd/Miami Blvd. Pass the first Brightleaf entrance. At next light, turn Right onto Northern Durham Parkway. Right on Round Rock Blvd. Right onto Plano Drive. Home is at the end of the cul-de-sac.


**D  
12**

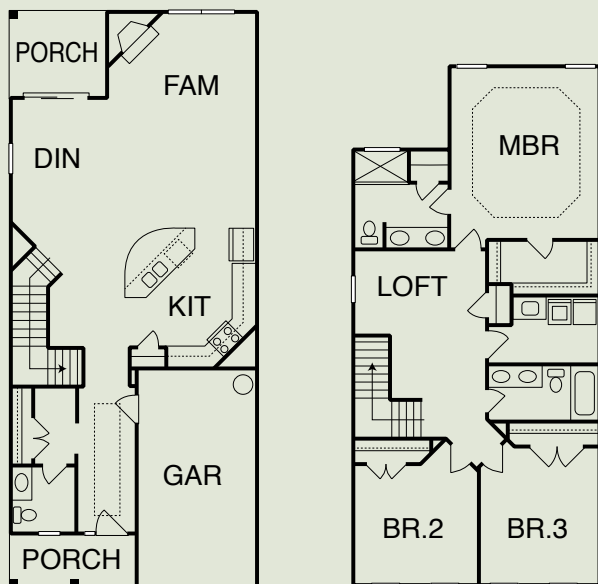
**NORMAN** 1,957 SF \$212,810  
Orchard Ridge: 139 Token House Road, Durham

Eastwood Homes of Raleigh 919-758-8208  
www.EastwoodHomes.com

Sales: Eastwood Homes 919-539-0917

Plan by South Designs, Inc.

- Award-winning builder
- Open living space
- One-car garage
- Granite countertops
- Kitchen island
- Maple kitchen cabinets
- Gas fireplace
- Stainless appliance
- Covered patio
- Large tile master shower



**DIRECTIONS:** From 15-501 North in Durham, merge onto I-85 North. Take Exit 178 to Hwy 70E, towards RDU/Raleigh. Turn left on Sherron Road. Continue straight on Sherron Road. Take left at second entrance of Orchard Ridge onto Token House Road. This home will be on the left.


**D  
13**

**OXFORD** 1,896 SF \$210,260  
Hanover Pointe: 2095 Tanners Mill Drive, Durham

Lennar 919-337-0240  
www.LennarRaleigh.com

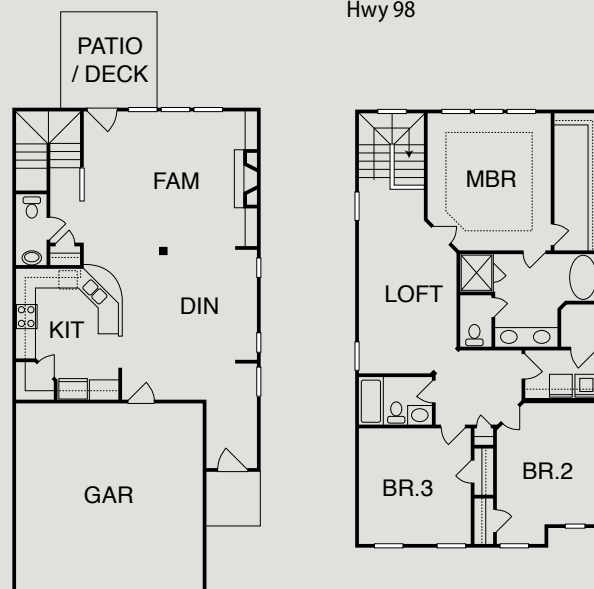
Sales: Lennar 919-813-4319

Plan by Lennar

- This elegant interior will grab your attention
- Living room with built-in bookcase!
- Kitchen with bar seating overlooks living/dining rooms
- Relax on the back porch after a long day
- Two-car garage

ENVIRONMENTS FOR *Living*®

- Lennar's Everything's Included® Home
- ENERGY STAR® / EFL Certified
- Amenities include community pool, sidewalks and two tot lots
- Convenient Durham location nestled between Hwy 70 and Hwy 98



**DIRECTIONS:** From I-85/Duke Street area: Go west on I-85, veer right onto Hwy 70 west. Continue to Miami Blvd/Mineral Springs Rd/Sherron Road intersection. Turn left at stoplight to continue on Mineral Springs Road. Left on Tanners Mill Drive. This home is on your right.



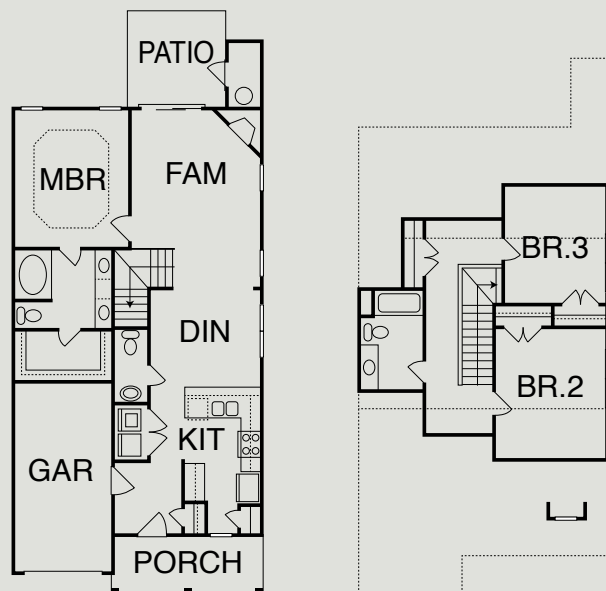
**PARKER** 1,546 SF \$185,000  
**Winsford at The Park: 116 Torpoint Road, Durham**

JordanBuilt Signature Homes 919-266-4966  
[www.Jordanbuilthomes.com](http://www.Jordanbuilthomes.com)

Sales: The Jim Allen Group CB-HPW 919-845-9909

Plan by Tony Frazier, Frazier Home Designs

- Designer kitchen details
- Stainless steel appliances
- Granite countertops
- First floor master suite
- Huge walk-in closet
- Open family room with fireplace
- Hardwoods throughout first floor
- One-car front entry garage
- Award-winning builder
- Amenities: pool, cabana, tot lot



**DIRECTIONS:** Take NC-147 North to Exit 8 on Ellis Road. Turn left on Ellis Road. Community will be on the right.



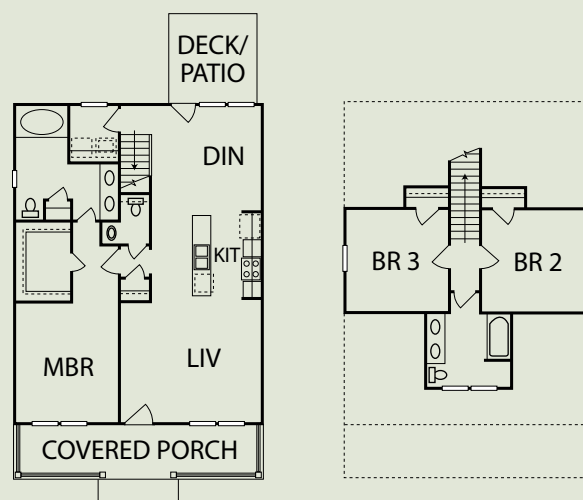
**THE AMERICAN DREAM** 1,444 SF \$195,000  
**1116 South Street, Durham**

Durham Building Company 919-500-0702  
[www.DurhamBuildingCo.com](http://www.DurhamBuildingCo.com)

Sales: Durham Building Company 919-500-0702

Plan by Durham Building Company

- Adorable craftsman bungalow with giant front porch in up-and-coming urban Durham neighborhood
- Spacious first-floor master suite with walk-in closet, dual vanities, and custom tile
- Open first floor plan with giant family room
- Custom trim work and hardwoods throughout
- Command central kitchen with granite countertops and stainless steel appliances
- Separate dining room with easy deck access — perfect for entertaining
- Spacious secondary bedrooms on second floor



**DIRECTIONS:** From NC-147 N take exit 12B toward Downtown/Roxboro St/Mangum St/US-15/US-501 and turn left onto Mangum Street. Go .2 mi and turn right onto W Lakewood Ave/US-15 Bus S/US-501 Bus S. and then first left onto South Street. Go .3 mi and home will be on the right.



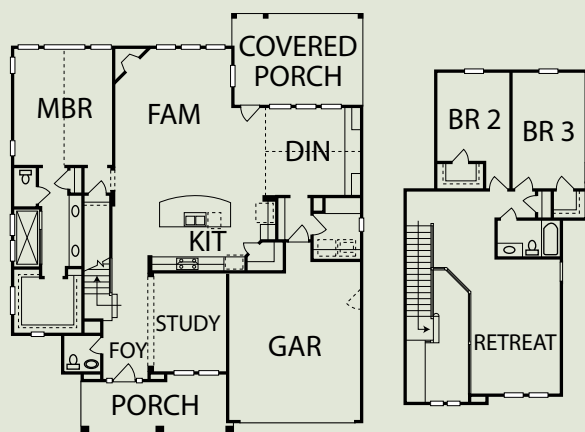
**THIS HOME HAS SOLD AND IS UNAVAILABLE FOR VIEWING**

**BENTRIDGE** 2,752 SF \$599,900  
**Montclair: 121 Mill Chapel Road, Durham**  
 David Weekley Homes 919-636-6806  
[www.DavidWeekleyHomes.com](http://www.DavidWeekleyHomes.com)  
 Sales: David Weekley Homes 919-659-1569  
 Plan by David Weekley Homes

**OLIVIA** 3,839 SF **SOLD**  
**Stonegate: 3713 Stonegate Drive, Durham**  
 Garman Homes 919-524-3245  
[www.GarmanHomes.biz](http://www.GarmanHomes.biz)  
 Sales: Garman Homes 919-524-3245  
 Plan by Garman Homes

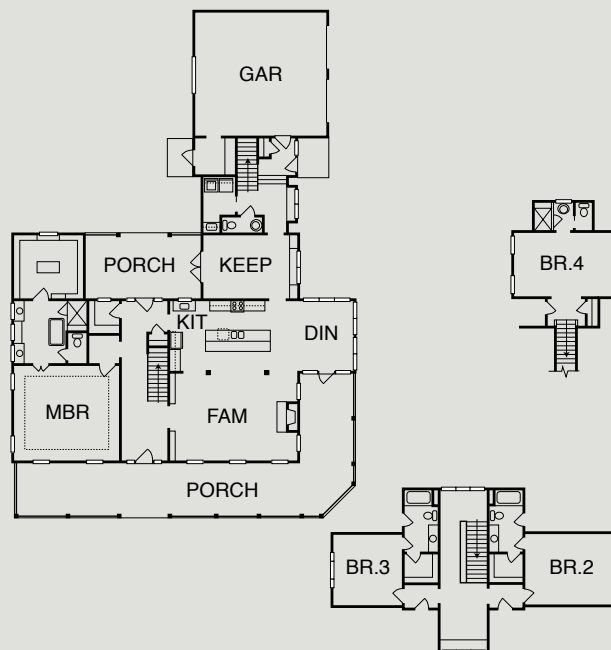
- 2' x 6' advanced framing R-19 wall insulation
- 14 SEER HVAC with MERV 16 filter
- Tankless water heater
- Solar cooled low-E Argon gas-filled windows
- Oak treads
- James Hardie® fiber cement siding

- 
- Maple cabinets to the ceiling
  - Quartz countertops with chevron backsplash
  - Large glass pendants
  - Mohawk EverStrand tonal carpet



**DIRECTIONS:** From I-40, take exit 273 A. Travel South on 54 and make a left onto Barbee Chapel Road. Travel 2 miles on Barbee Chapel. Make a left onto Mill Chapel Road. This home is on the corner.

- Unique modern farmhouse
- Gorgeous herringbone wood floor entrance hall
- Secluded guest suite
- Private, wooded lot
- Enormous owner's suite
- Custom sliding barn door in owner's suite
- Amazing trim details throughout the home
- Custom reclaimed wood kitchen island countertop
- Professional appliances — a true gourmet kitchen
- Beautiful wrap-around porch



**DIRECTIONS:** From 15/501 Blvd in Durham, head towards Duke/Downtown. Turn left onto Garrett Road. At stop sign, turn left onto Pickett Road. Turn right onto Randolph Road. Turn right onto Stonegate Drive. This home will be on the right.



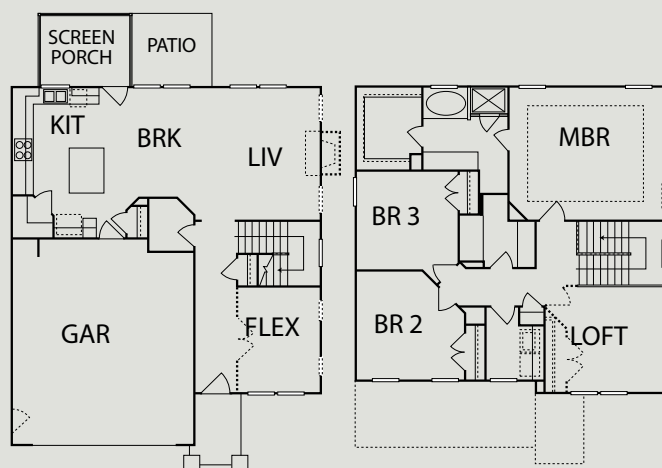
**PARKER** 1,994 SF \$248,846  
**Cardinal Oaks: 133 Kinnakeet Drive, Durham**

Level Homes 919-615-1585  
[www.LevelHomesLifestyle.com](http://www.LevelHomesLifestyle.com)

Sales: Level Homes 919-246-5307

Plan by Level Homes

- Three bedrooms, two- and a half- baths
- Large kitchen with island
- Walk-in pantry
- Gas range and stainless steel appliances
- Screened porch and patio
- Study with French doors
- Spacious loft
- Laundry room on second floor
- Owner's suite has luxury bathroom with garden tub, tile, glass shower
- Crown moulding throughout first floor



**DIRECTIONS:** From Brier Creek, take Hwy 70 toward Durham. Turn right on Sherron Road. Turn left on Stallings Road. Turn left on Cheek Road. Turn left into Cardinal Oaks on Kinnakeet Drive. This model home is on the left.



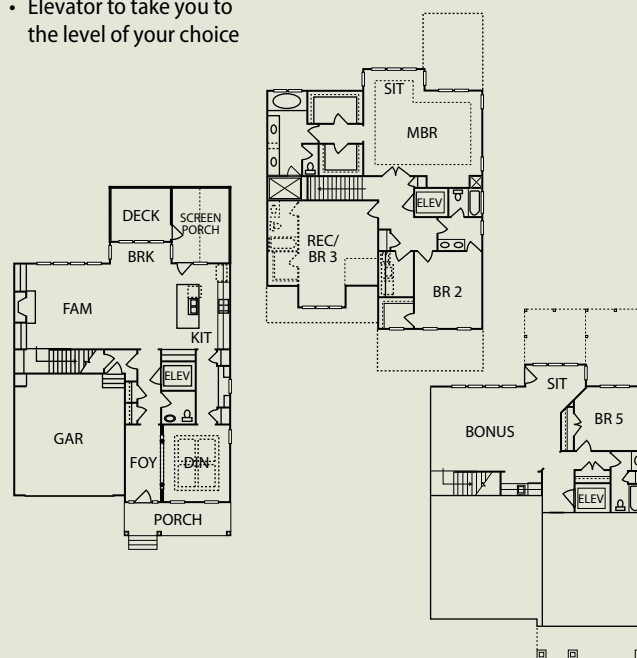
**HOLE IN ONE** 2,964 SF \$355,000  
**Treyburn: 22 Grandwood Circle, Durham**

Durham Building Company 919-500-0702  
[www.DurhamBuildingCo.com](http://www.DurhamBuildingCo.com)

Sales: Durham Building Company 919-500-0702

Plan by Murphy Garnow Design Group, Inc.

- Colonial style exterior with covered front porch
- Gorgeous golf course view from the screened porch
- Giant master suite with his/hers closets
- Elevator to take you to the level of your choice
- Open floor plan that's perfect for entertaining
- Formal dining room with coffered ceiling
- Finished basement with bedroom and full bath



**DIRECTIONS:** From NC-147N, take exit EXIT 12B toward Downtown/ Roxboro St/Mangum St/US-15/US-501 and turn right onto S. Roxboro St/US-15 Bus N/US-501 Bus N. Proceed 3.2 mi and turn right onto Old Oxford Road. Proceed 2 miles and turn left onto Snow Hill Road. Proceed .7 mi and turn right onto Vintage Hill Pkwy. Proceed 1.3 mi and turn left onto Grandwood Circle. Turn right to stay on Grandwood Circle and home will be on the right.



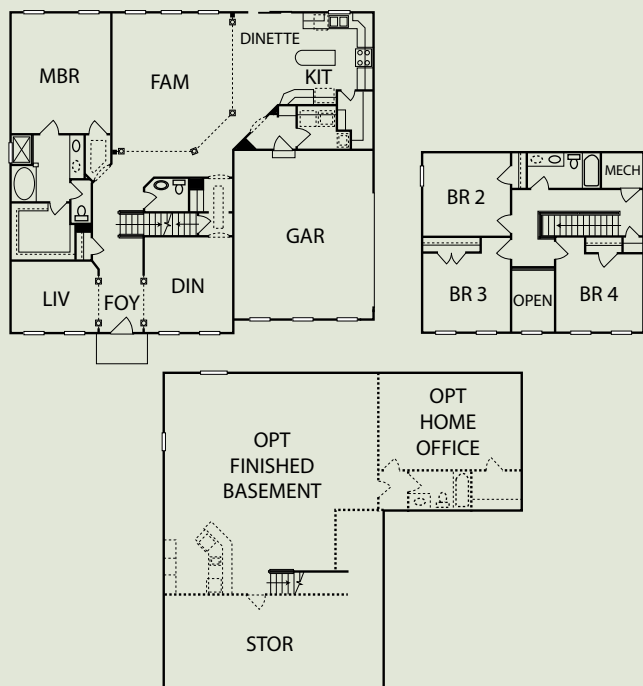
**LINCOLNSHIRE**      **5,461 SF**      **\$545,990**  
**Westfall: 58 South Farnleigh Drive, Chapel Hill**

Ryan Homes/ NVR      919-987-1930  
 Ryanhomes.com

Sales: Ryan Homes      919-240-7081

Plan by Ryan Homes

- Finished basement with wet bar
- Bonus room
- Morning room
- Gourmet kitchen
- Front porch
- 12' x 16' deck and paver stone patio
- Media room



**DIRECTIONS:** From Raleigh: Take I-40 West to exit 273A for NC 54 West toward Chapel Hill. Take the exit onto 54/15-501 West toward Pittsboro. Turn left on Jack Bennett Road. Travel 1.9 miles and turn left on S. Farnleigh Drive.

From Chapel Hill, take 15-501 South towards Pittsboro. Travel approximately 6 miles and turn left onto Jack Bennett Road. Travel 1.9 miles and turn left on Wood Laurel. Turn left on S. Farnleigh.



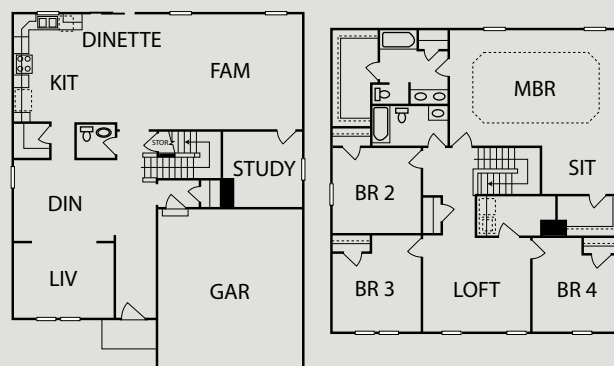
**ROME**      **3,341 SF**      **\$370,000**  
**Westfall: 29 South Farnleigh, Chapel Hill**

Ryan Homes/ NVR      919-987-1930  
 Ryanhomes.com

Sales: Ryan Homes      919-240-7081

Plan by Ryan Homes

- Gourmet kitchen with island
- Open loft
- Morning room
- 2014 Parade of Homes Silver winner
- 10' x 12' deck
- Stone fireplace
- First floor play room/office



**DIRECTIONS:** From Raleigh: Take I-40 West to exit 273A for NC 54 West toward Chapel Hill. Take the exit onto 54/15-501 West toward Pittsboro. Turn left on Jack Bennett Road. Travel 1.9 miles and turn left on S. Farnleigh Drive.

From Chapel Hill, take 15-501 South towards Pittsboro. Travel approximately 6 miles and turn left onto Jack Bennett Road. Travel 1.9 miles and turn left on Wood Laurel. Turn left on S. Farnleigh.



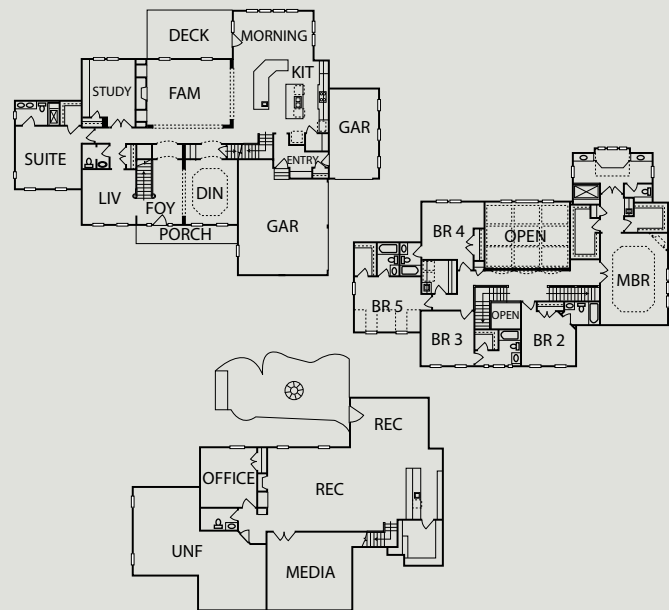
**REGENT'S PARK II** 8,744 SF \$957,710  
**Westfall: 28 Raven Ridge Court, Chapel Hill**

NV Homes  
[www.NVHomes.com](http://www.NVHomes.com)

Sales: NVHomes 919-967-9081

Plan by NVR, Inc.

- Two-story family room with stone fireplace
- Grand outdoor living space
- Stone front porch
- Gourmet kitchen with double islands
- First floor guest suite
- En-suite baths, all bedrooms
- Rec room with wet bar and pool table
- Master with fireplace and coffee bar
- Extensive trim package with arches
- Finished basement with media room



**DIRECTIONS:** From Chapel Hill, take US 15/501 South towards Pittsboro. Turn left on Lystra Road. Turn right on Westfall Way. Turn left on Raven Ridge Court. This home is on the corner. From Raleigh, take US-64W towards Pittsboro. Turn right on Farrington Road. Turn left on Lystra Road. Turn left on Westfall Way. Turn left on Raven Ridge Court. This home is on the corner.



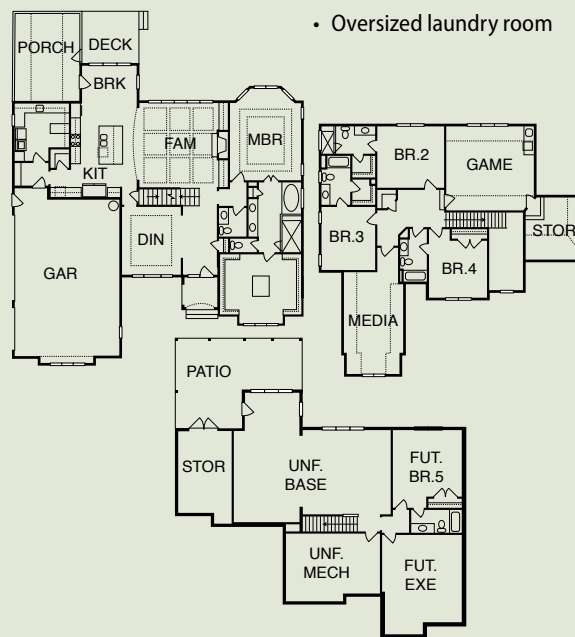
**JENSEN D** 3,668 SF \$825,000  
**Lystra Preserve: 410 Lystra Preserve Drive, Chapel Hill**

Terramor Homes 919-909-7545  
[terramorhomes.com](http://terramorhomes.com)

Sales: Domicile Realty 919-909-7545

Plan by Terramor Homes

- First floor master suite and spa
- Extensive custom trim detail throughout home
- Unfinished basement
- Site-finished hardwoods
- Bosch stainless steel appliance package
- Upgraded kitchen selections including custom backsplash and designer granite
- Elegant lighting package throughout
- Custom built-in trim throughout
- Architecturally detailed elevation
- Oversized laundry room



**DIRECTIONS:** 540 W, take exit 1A-1B toward Durham. Merge onto 40W, take exit 273A for NC 54W toward Chapel Hill. Merge onto NC-54W, turn left onto Farrington Road. Turn left onto Farrington Mill Road. Turn left onto Farrington Point Road. Turn right onto Lystra Road. Turn left onto Lystra Preserve Drive.



**OAKMONT** 4,021 SF \$697,479  
**Briar Chapel: 1475 Briar Chapel Parkway, Chapel Hill**

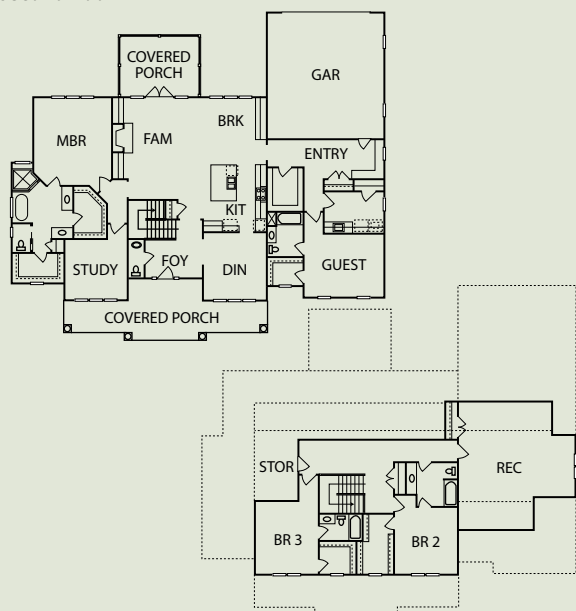
Homes by Dickerson 919-847-4447  
[www.HomesByDickerson.com](http://www.HomesByDickerson.com)

Sales: Homes by Dickerson 919-917-3132

Plan by Creative Residential Designs

- ENERGY STAR® and NGBS Bronze Certified
- Estate-style front elevation
- First floor master and guest suite
- Two-car rear load garage
- Spacious walk-in pantry
- Convenient owner's entry with lockers and seating options
- Generous rec room on the second floor

- An abundance of storage
- Custom features and finishes throughout
- Member, Triangle Builder Guild



**DIRECTIONS:** From I-40: S on 15/501, cross into Chatham County, go 3.4 miles. Right onto Briar Chapel Pkwy, cross bridge, left onto Dark Forest Drive. Home will be at the corner of Dark Forest Drive and Briar Chapel Parkway.



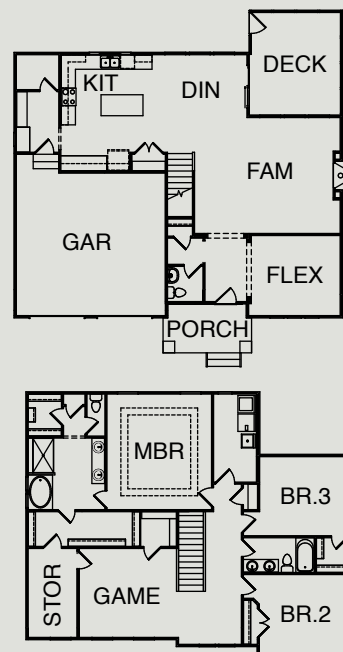
**MADELYNN A** 2,780 SF \$400,000  
**Briar Chapel: 700 Tobacco Farm Way, Chapel Hill**

Drees Homes 919-844-9288  
[www.dreeshomes.com](http://www.dreeshomes.com)

Sales: Drees Homes 919-903-8409

Plan by Drees Homes

- NGBS Green Certified, Bronze
- Open, spacious and flowing living triangle
- Outdoor living space with screen porch
- DreeSmart Energy Conservation Innovation
- Sealed and conditioned crawl space
- Site-finished floors on main level
- Tankless water heater



**DIRECTIONS:** 15-501 South to Chapel Hill/Pittsboro. Right on Briar Chapel Parkway. Follow Briar Chapel Parkway to right on Tobacco Farm Way. Home will be on the left.



**TAYLOR** 1,763 SF \$297,942  
**Briar Chapel: 1954 Great Ridge Parkway, Chapel Hill**

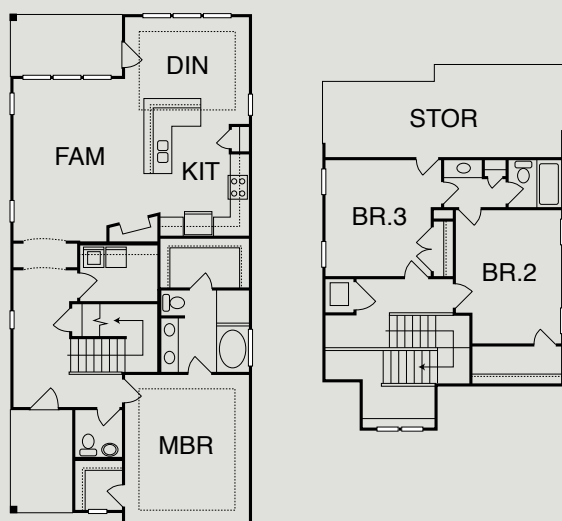
Lennar 919-337-0240  
[www.LennarRaleigh.com](http://www.LennarRaleigh.com)

Sales: Lennar 919-590-4164

Plan by Lennar

- Chapel Hill address, Chatham County taxes
- Unique architectural design
- Master down floorplan
- Great plan for entertaining with living room open to kitchen
- Don't miss the room over the garage!
- Walk-in storage
- Lennar's Everything's Included® Home

- 
- Home Innovation**  
 NGBS GREEN CERTIFIED™
- ENERGY STAR® Certified
  - Amenities include two pools, clubhouse, dog park, miles of walking trails
  - Convenient location adjacent to Chapel Hill, US 64 and I-40



**DIRECTIONS:** From Chapel Hill, take 15/501 South towards Pittsboro. Turn right onto Briar Chapel Parkway into Briar Chapel community. Turn left on Bennett Mountain Trace. Turn left on Great Ridge Parkway. This home is on the right.



**BELLA D** 3,882 SF \$511,349  
**Briar Chapel: 29 Tyner Loop Circle, Chapel Hill**

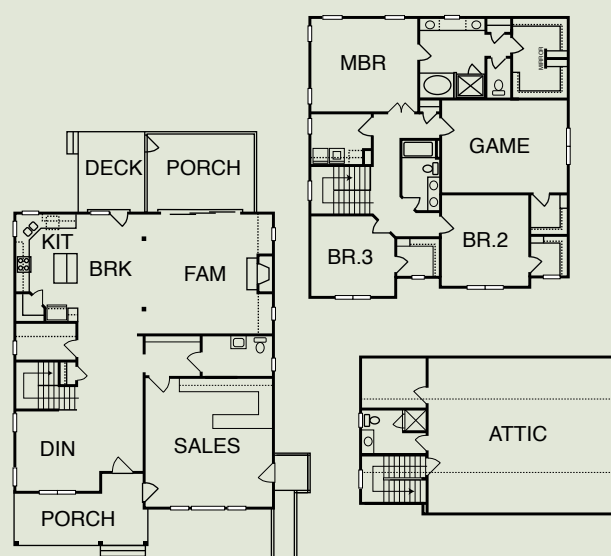
Terramor Homes 919-740-1047  
[terramorhomes.com](http://terramorhomes.com)

Sales: Terramor Homes 919-740-1047

Plan by Terramor Homes

- Custom hardwoods throughout first floor
- Custom lighting package
- Decorative trim throughout
- Designer cabinets and backsplash in kitchen
- Large sliding glass doors in family to screened porch with great view
- Spacious screen porch with recessed lighting and fan

- 
- Home Innovation**  
 NGBS GREEN CERTIFIED™
- Upgraded stainless steel appliance package
  - Finished third floor walk-up attic
  - Hobby/tech area with built-in desk
  - Extensive outdoor living



**DIRECTIONS:** From Chapel Hill, take 15/501 South towards Pittsboro. Turn right onto Briar Chapel Parkway into Briar Chapel community. Turn left on Bennett Mountain Trace. Turn left on Great Ridge Parkway. Slight right to stay on Great Ridge Pkwy. Right onto Tyner Loop Circle.



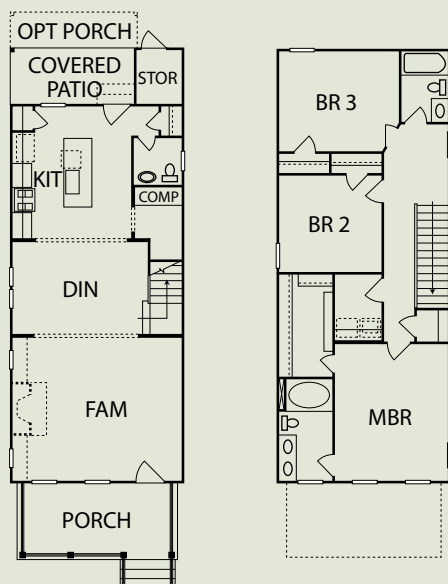
**STROWD F** 1,740 SF \$279,780  
**Briar Chapel: 50 Mallard Landing Drive, Chapel Hill**

Saussy Burbank 919-781-5225  
[www.saussyburbank.com](http://www.saussyburbank.com)

Sales: Saussy Burbank 919-240-5800

Plan by Saussy Burbank

- Stainless steel appliances
- Granite countertops
- Two-car detached garage
- 9' ceilings
- Upstairs loft
- Tankless hot water heater
- Screened rear porch
- Gas log fireplace with built-ins on both sides



**DIRECTIONS:** From Chapel Hill, take 15-501 South toward Pittsboro. Briar Chapel approximately 7 miles south on right. Follow Briar Chapel Parkway to the traffic circle. Make 3rd right off circle, onto Great Ridge Parkway. Make left on Mallard Landing Drive. House on right.



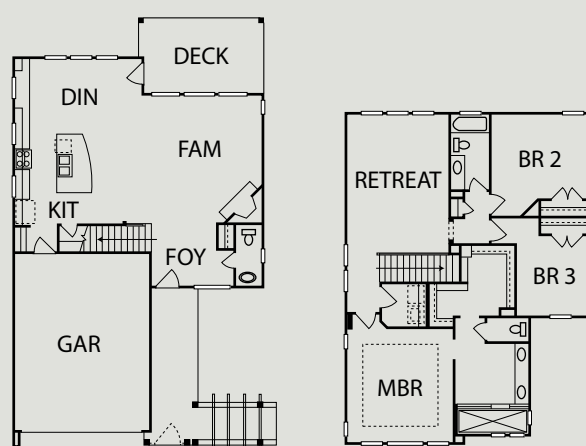
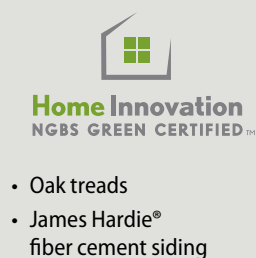
**THE VALWOOD** 2,264 SF \$399,900  
**Briar Chapel: 33 Old Piedmont Circle, Chapel Hill**

David Weekley Homes 919-636-6806  
[www.DavidWeekleyHomes.com](http://www.DavidWeekleyHomes.com)

Sales: David Weekley Homes 919-659-1563

Plan by David Weekley Homes

- 2' x 6' advanced framing
- R-19 wall insulation
- 14 SEER HVAC with MERV 16 filter
- Tankless water heater
- Solar cooled low-E Argon gas-filled windows
- 1.28 GPF toilets
- 10' ceilings on first floor



**DIRECTIONS:** From Chapel Hill, take 15-501 South toward Pittsboro. Briar Chapel approximately 7 miles south on right. Follow Briar Chapel Parkway to the traffic circle. Make 3rd right off circle, onto Great Ridge Parkway. In a ¼ mile make a right turn on Old Piedmont Circle. The home is the 2nd home on the left.



**THE SOUTHERN BELLE**      2,478 SF      \$485,000  
**Briar Chapel: 65 Old Piedmont Circle, Chapel Hill**

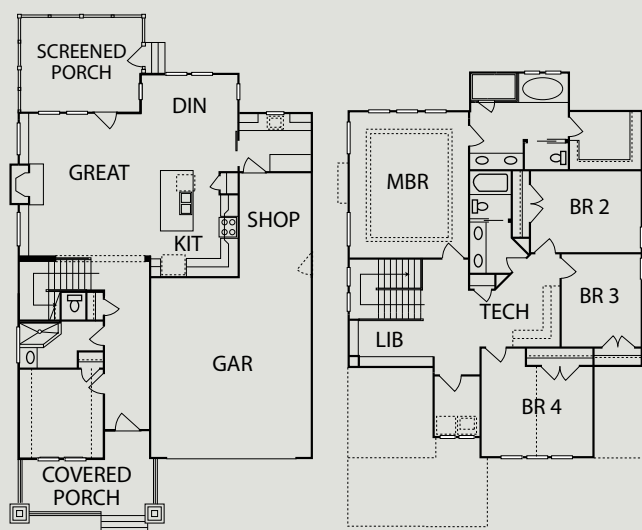
Garman Homes      800-560-1160  
[www.GarmanHomes.biz](http://www.GarmanHomes.biz)

Sales: Garman Homes      800-560-1160

Plan by Garman Homes

- Super chic mom cave
- Pinterest-worthy pantry/owner's entry
- Amazing outdoor living areas including master bedroom roof deck
- Built-in library and trendsetting kitchen
- Upstairs tech area
- Amazing master bathroom with oversized shower and clawfoot tub

- 
- Home Innovation**  
 NGBS GREEN CERTIFIED™
- Custom rustic beam mantle
  - Cathedral ceilings
  - Dog wash station with pull-out steps
  - Oversized garage with shop area and custom doors



**DIRECTIONS:** From Chapel Hill, take 15-501 South toward Pittsboro. Briar Chapel approximately 7 miles south on right. Follow Briar Chapel Parkway to the traffic circle. Make 3rd right off circle onto Great Ridge. Turn right onto Old Piedmont Circle. This home is on the left.



**ARNOLD R**      2,484 SF      \$499,197  
**Briar Chapel: 23 Old Piedmont Circle, Chapel Hill**

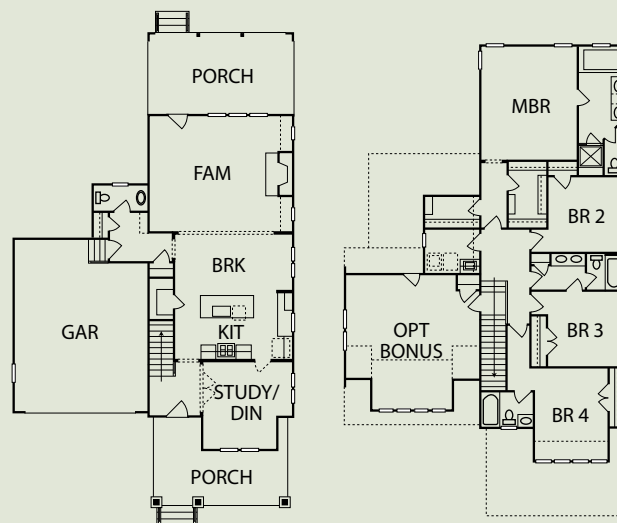
Saussy Burbank      919-781-5225  
[www.saussyburbank.com](http://www.saussyburbank.com)

Sales: Saussy Burbank      919-240-5800

Plan by Saussy Burbank

- Screened-in rear porch
- Stainless steel appliances
- Quartz countertops
- Built-ins on both sides of fireplace
- Two-car attached garage
- 9' ceilings
- Upstairs bonus room
- Tankless hot water heater

- 
- Home Innovation**  
 NGBS GREEN CERTIFIED™
- ENERGY STAR® Certified, NGBS Green Home
  - Member, Triangle Builder Guild



**DIRECTIONS:** From Chapel Hill, take 15-501 South toward Pittsboro. Briar Chapel approximately 7 miles south on right. Follow Briar Chapel Parkway to the traffic circle. Make 3rd right off circle, onto Great Ridge Parkway. Make right onto Old Piedmont Circle. House on left.



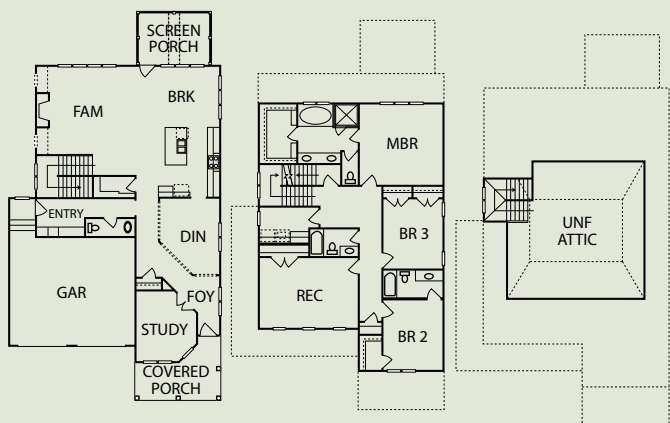
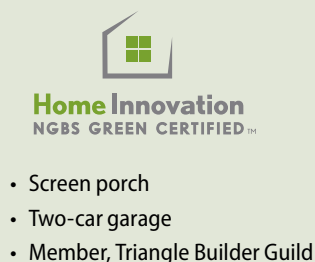
**BELHAVEN**                      **3,050 SF**                      **\$496,400**  
**Briar Chapel: 164 Old Piedmont Circle, Chapel Hill**

Homes by Dickerson                      919-847-4447  
[www.HomesByDickerson.com](http://www.HomesByDickerson.com)

Sales: Homes by Dickerson                      919-917-3132

Plan by Creative Residential Designs

- ENERGY STAR® and NGBS Bronze Certified
- Formal dining room and study
- Spacious rec room upstairs
- Third floor unfinished attic
- Convenient owner's entry with lockers and seating options
- Custom features and finishes throughout



**DIRECTIONS:** From I-40: S on 15/501, cross into Chatham County, go 3.4 miles. Right onto Briar Chapel Pkwy, cross bridge, then left onto Bennett Mountain Trace towards Great Meadows section. Turn left on Great Ridge Parkway. Right on Old Piedmont Circle. Home will be on the right.



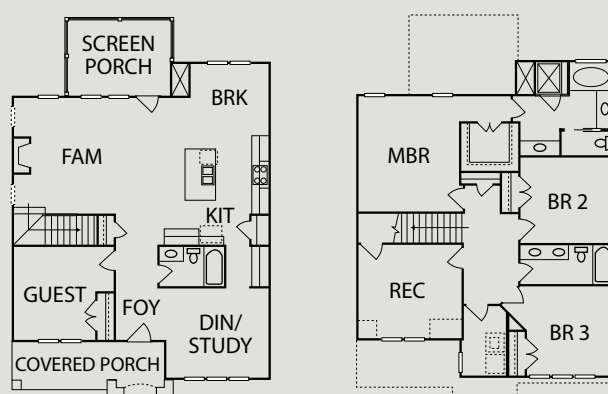
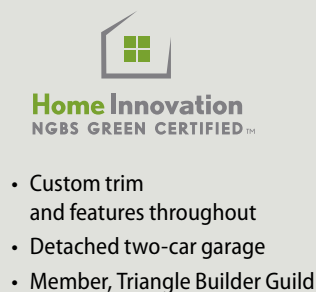
**JACKSON**                      **2,391 SF**                      **\$384,900**  
**Briar Chapel: 79 Old Piedmont Circle, Chapel Hill**

Homes by Dickerson                      919-847-4447  
[www.HomesByDickerson.com](http://www.HomesByDickerson.com)

Sales: Homes by Dickerson                      919-917-3132

Plan by Creative Residential Designs

- ENERGY STAR® and NGBS Bronze Certified
- Extended covered porch
- Gourmet kitchen with butler's pantry
- First floor guest room
- Spacious upstairs rec room
- Luxurious master suite
- Screen porch



**DIRECTIONS:** From I-40: S on 15/501, cross into Chatham County, go 3.4 miles. Right onto Briar Chapel Pkwy, cross bridge, then left onto Bennett Mountain Trace towards Great Meadows section. Turn left on Great Ridge Parkway. Right on Old Piedmont Circle. Home will be on the left.

C  
15

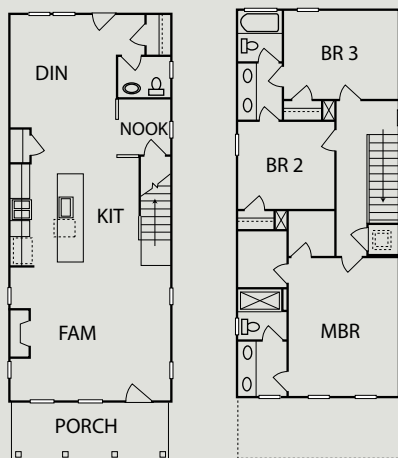
**SCISSORS** 1,820 SF \$272,170  
**Briar Chapel: 638 Granite Mill Boulevard, Chapel Hill**

Garman Homes 919-524-3245  
[www.GarmanHomes.biz](http://www.GarmanHomes.biz)

Sales: Garman Homes 919-524-3245

Plan by Garman Homes

- Reclaimed wood-look accent wall in master is DOPE
- "Seaworthy" custom kitchen and bath cabinet color. Rage against builder beige!
- Varying width reclaimed wood-look laminate floors throughout first floor
- Fresh Paint by Garman Homes "Industrial" interior features package will rock your world
- Rustic chic feel with industrial-style light fixtures
- Huge family room totally open to the kitchen
- His and hers closets in the master bedroom...or hers and hers, or his and his...
- Jack and Jill bath with 2 sinks for secondary bedroom...no sharing required
- 2'x6' interlocking mosaic grey tile backsplash against gorgeous white quartz kitchen countertops
- Two-car detached garage



**DIRECTIONS:** 15-501 S to Briar Chapel Pkwy. To round about, 3rd exit onto Great Ridge Pkwy. Right onto Piedmont Circle. At dead end, right on Boulder Point. Home is on right.

C  
16

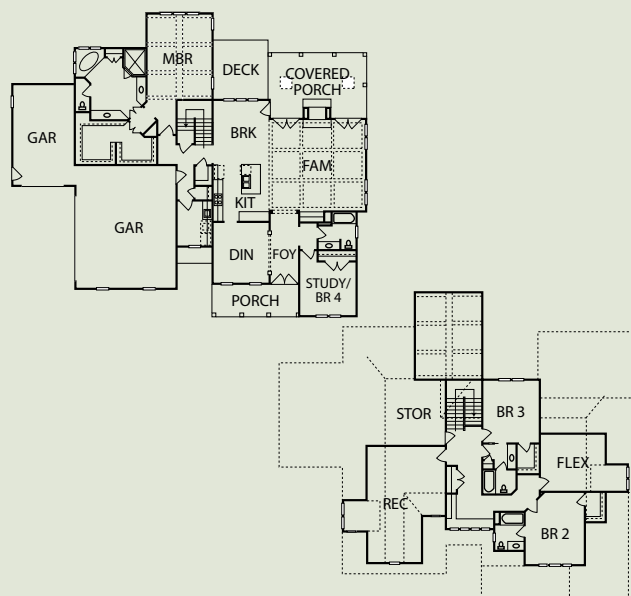
**GREYSTONE** 3,677 SF \$595,900  
**Fieldstone: 56 Clarence Lane, Pittsboro**

Horizon Custom Builders, LLC 919-291-5024  
[www.HorizonCustomBuilders.com](http://www.HorizonCustomBuilders.com)

Sales: Coldwell Banker HPW 919-260-1222

Plan by Betz/Horizon Custom Builders, LLC

- Elevation includes vertical and horizontal shake siding plus stone
- 10' ceilings on first floor; 9' ceilings on second floor
- Coffered ceiling in living room
- Cathedral ceiling in master bedroom with special detailing
- See-thru fireplace between living room and screened porch
- Lovely wooded views on a cul-de-sac location
- Sealed crawlspace, Tech Shield roof sheathing, tankless water heater
- Energy- and green-conscious builder
- Average HERS rating for last ten homes: 64
- FieldstoneNeighborhood.com



**DIRECTIONS:** From the intersection of 15/501 and Manns Chapel Road, drive approximately 2 miles down Manns Chapel Road. Entrance to Fieldstone is on the right. Turn right into Fieldstone. Take the next right on Clarence. House is second house on the right.



# Builders FirstSource and Probuild Create An Industry Leader



The Professional Builders **FirstSource!**



**Builders**  
FirstSource



**PRCBuild**

Coming together to better serve all homebuilders in the Triangle Area.

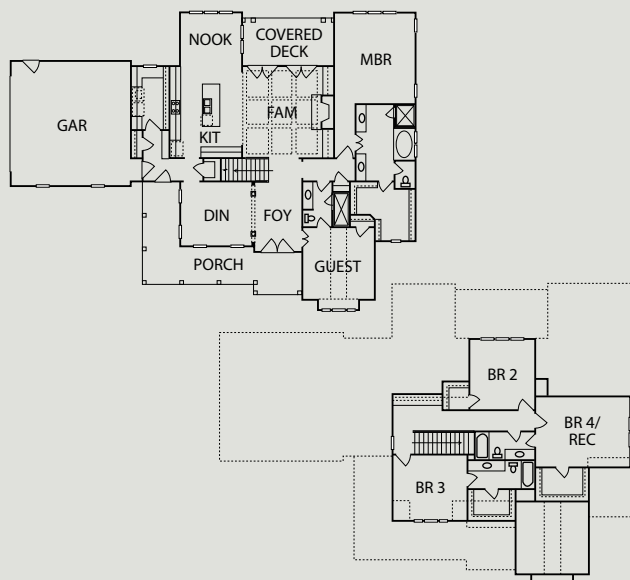
23 Red Cedar Way, Apex, North Carolina, 27523 | P: 919-363-4956 | F: 919-363-4554 | ApexSales@bldr.com | www.bldr.com

2512 Yonkers Rd., Raleigh, North Carolina, 27604 | P: 919-833-3639 | F: 919-834-6797 | www.probuild.com



**STONE CREEK**                      **3,187 SF**                      **\$549,900**  
**Harrison Pond: 196 Harrison Pond Drive, Pittsboro**  
 Horizon Custom Builders, LLC                      919-291-5024  
[www.HorizonCustomBuilders.com](http://www.HorizonCustomBuilders.com)  
 Sales: Coldwell Banker HPW                      919-960-6370  
 Plan by Mitchell Ginn/Horizon Custom Builders, LLC

- Master suite plus an additional bedroom and bath on main floor
- Two more bedrooms plus a large bonus room on the second floor
- Spacious covered deck
- Kitchen and breakfast room open to main living floor
- Formal dining room or home office on main floor
- Tech Shield roof sheathing
- ENERGY STAR® construction with sealed crawl space and on-demand water heater
- Quality landscaping with sod and irrigation
- Low Chatham County taxes; convenient to Chapel Hill, Carrboro and RTP
- Walk to Perry Harrison Elementary School

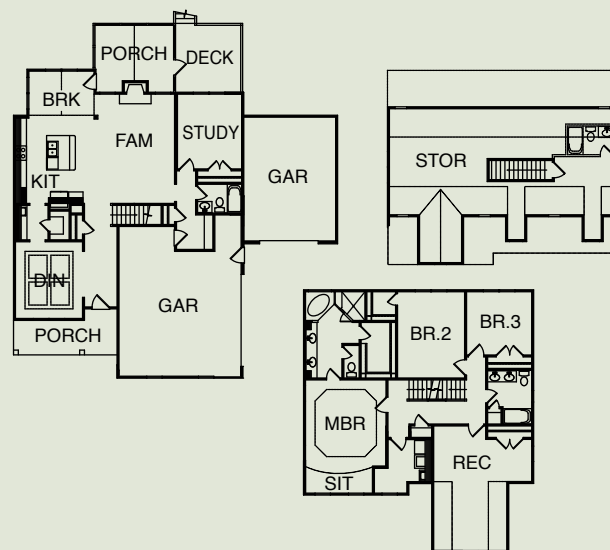


**DIRECTIONS:** From Chapel Hill, take 15-501 South toward Pittsboro. Turn right on Mann's Chapel Road at Cole Park Plaza. Travel approximately 5.5 miles. Go through intersection at stop sign. Go approximately 200 yards and turn right into Harrison Pond community on Harrison Pond Drive. This home will be on your right.



**THE SALEM**                      **2,695 SF**                      **\$429,900**  
**Chapel Ridge: 579 Golfers View, Pittsboro**  
 Capitol City Homes                      919-872-0048  
[www.CapitolCity-Homes.com](http://www.CapitolCity-Homes.com)  
 Sales: Windjam Properties                      919-880-7516  
 Plan by Dynamic Design Group

- Gourmet kitchen
- Stainless steel appliances
- Rec room
- Butler's pantry
- First floor guest suite
- Screen porch
- Coffered ceiling in dining room
- Tray ceilings in master bedroom



**DIRECTIONS:** From I-40 W (Raleigh, Cary): Take exit 273A onto US-54 toward Chapel Hill. Travel approximately 3 mile, exit right onto N. Fordham Boulevard. Travel approximately 2 miles. Exit right for US 15 S toward Chapel Hill, Pittsboro. Turn left onto US-15 501 N (S. Columbia Street). Travel approximately 12 miles. Turn right onto Russells Chapel Church Road. At the end of the road, turn right onto Old Graham Road – Chapel Ridge is approximately 1.5 miles on the left.



**LAKEMONT** 1,931 SF \$329,140  
**Vistas at Chapel Ridge: 56 Autumn Chase, Pittsboro**

Lennar 919-337-0240  
[www.LennarRaleigh.com](http://www.LennarRaleigh.com)

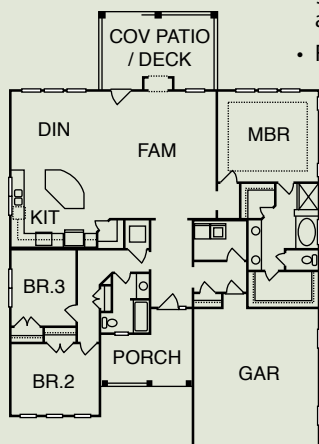
Sales: Lennar 919-533-3023

Plan by Lennar

- Freedom from work, freedom to play
- Spectacular golf course home with breathtaking view of the 10th hole
- Elegant ranch offers first floor living at its best
- Great home for entertaining with kitchen open to living/dining rooms

ENVIRONMENTS FOR *Living*

- Cozy see-through fireplace joins inside and out
- Screened porch is the place to relax and enjoy the outdoors
- Lennar's Everything's Included® Home
- ENERGY STAR®/EFL Certified
- Amenities include Fred Couples golf course, clubhouse, swim and tennis
- Full yard maintenance included



**DIRECTIONS:** From Durham, take NC 147 S/Durham Freeway S/ Airport/Raleigh and merge onto NC-147S. Take the NC 540 W exit toward NC 55/Apex Toll road. Merge onto NC-540W. Take Exit 59 B-A to merge onto US 64 W toward Pittsboro. Take the ramp to NC-87N. Right onto NC-87N (signs for NC 87 N/Burlington). Turn right onto Parks Meadow Drive. Turn right to stay on Parks Meadow Drive. At the traffic circle, take the 3rd exit onto Golfers View. Turn left onto Autumn Chase. This home will be on the right.

## A North Chatham Neighborhood Just 10 Minutes from Downtown Chapel Hill



*Welcome to a new home community where  
 gracious living meets building science*

New Energy-Efficient Homes for Sale • Low Chatham Taxes  
 Many One-Level Designs • 1.5- to 4-Acre Lots  
 Active Solar & Geothermal Optional



[www.binghamridge.com](http://www.binghamridge.com)

Sales and Marketing: Betty Cross  
 Keller Williams Realty Chapel Hill  
 919.971.1093



**slide into cool...**

**FRESH NEW SOPHISTICATED**

**ONLY AT CLEAR-VUE GLASS**

**Add European style and efficiency  
 Smooth-operating doors with beautiful LuxEtch™ glass**

**LuxEtch™ is revolutionary, changing the face of glass...**



502 RIGSBEE AVENUE, IN DURHAM'S CENTRAL PARK

SHOWROOM OPEN 8-5, M-F  
 For appointments please call 919.682.5597  
[clearvueglass.com](http://clearvueglass.com)

- Eco-friendly, smudge-resistant glass
- Soft to the touch
- Non-reflective, soothing to the eye
- Customizable for endless designs
- For home + office



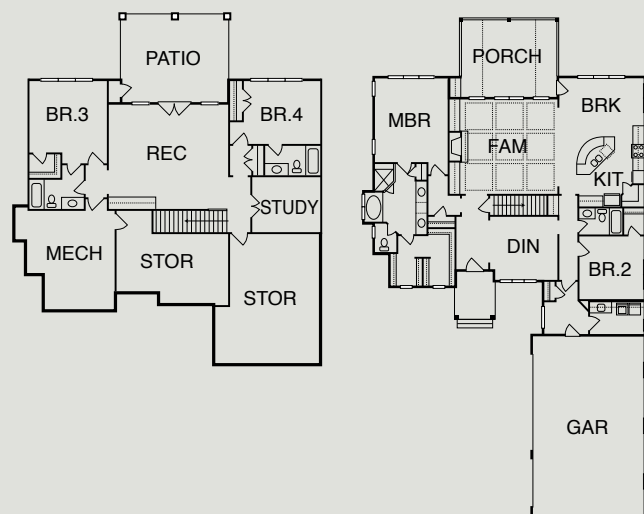
**LA CASA DE AMOR**      **3,353 SF**      **\$471,000**  
**Chapel Ridge: 769 Chapel Ridge Drive, Pittsboro**

Absolute Construction & Development, LLC    919-929-1057  
[www.AbsoluteHomeBuilders.com](http://www.AbsoluteHomeBuilders.com)

Sales: Absolute Const & Dev, LLC      919-929-1057

Plan by Frazier Home Design

- Built to HERO energy-efficient qualifications
- Spray foam insulation
- Wine room
- Coffered ceiling, wainscoting, built-ins
- Hardwood floors throughout main floor
- Speaker system controlled through mobile app
- Rec room with wet bar and tile floor
- Tankless water heaters
- 2' x 6' exterior framing and Tech Shield radiant barrier
- Three-car garage



**DIRECTIONS:** From 15/501 and 64 interchange: North on 15/501. Left on Russell Chapel. Right on Old Graham Rd. Left into Chapel Ridge subdivision. Left on Chapel Ridge Drive. House is on the left just before the clubhouse.



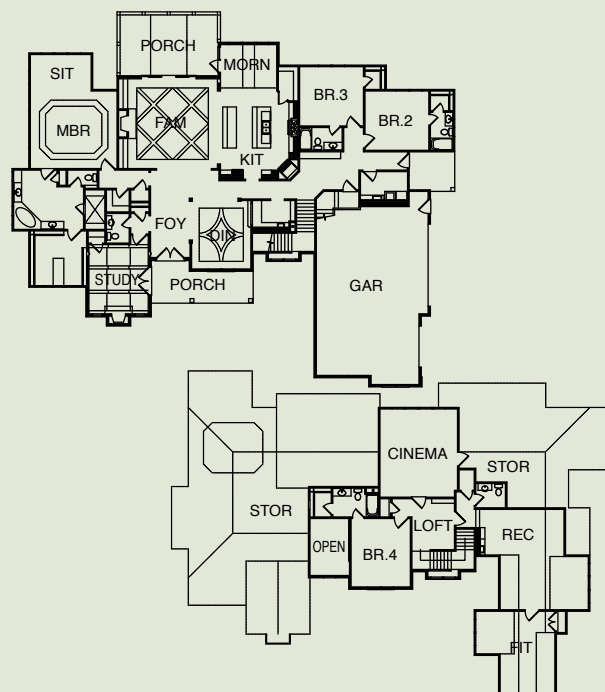
**THE WINDSOR**      **5,154 SF**      **\$949,900**  
**The Hamptons: 70 Rolling Woods Court, Pittsboro**

Capitol City Homes      919-872-0048  
[www.CapitolCity-Homes.com](http://www.CapitolCity-Homes.com)

Sales: Windjam Properties      919-880-7516

Plan by Dynamic Design Group

- First floor master suite
- Gourmet kitchen
- Custom maple cabinets
- Stone fireplace
- Exercise room
- Rec room with wet bar
- Custom trim
- Walk-in storage
- Screen porch with cathedral ceiling
- Cedar beams in family room and study



**DIRECTIONS:** From Chapel Hill: Take 15-501 to Mt. Gilead Church Rd. Take first left just past Fearrington Village on Mt. Gilead Church Road. The Hamptons are 1 mile on right.

**FROM CARY:** US 64W cross Jordan Lake, at the Valero gas station take a right on Mt. Gilead Church Rd. 3.5 miles on left.



# You Dream. We Build.

Building custom homes in these fine communities:

**Dunhill**  
Cary

**Carolina Crossings**  
Apex

**Hickory Leaf**  
Raleigh

**Croasdaile Farm**  
Durham

**Chapel Ridge**  
Chatham County

**The Hamptons**  
Chatham County  
*Decorated Model!*

**Westfall**  
Chapel Hill

Arthur  Rutenberg Homes

ArthurRutenbergHomes.com

Hearthstone Luxury Homes, LLC. — An Independent Franchise



**Dianne Baker**  
919-704-8462

**Cathy Lockwood**  
919-704-8462



Land  
Builders  
Knowledge  
Experience

We have what it takes.



**919-460-6880**

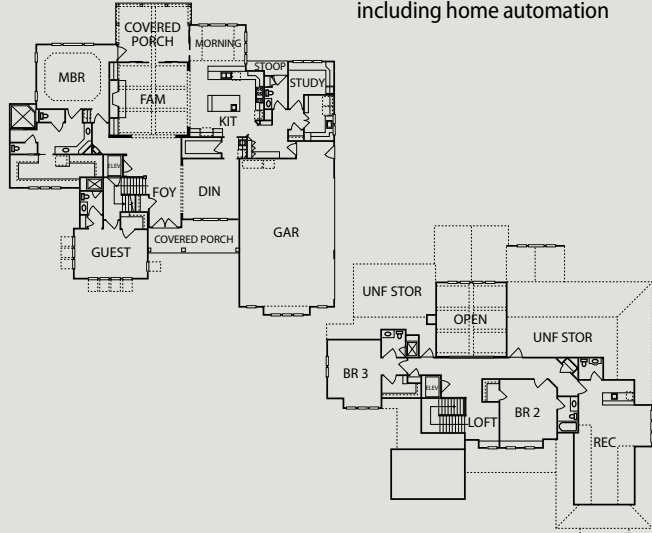
6030 Creedmoor Road  
Raleigh, NC 27612

[www.advantagenewhomes.com](http://www.advantagenewhomes.com)

C  
22

**THE ARCADIAN** 4,855 SF \$1,650,000  
**The Hamptons: 67 Seneca Court, Pittsboro**  
 Sage Built 919-883-8528  
[www.SageBuiltNC.com](http://www.SageBuiltNC.com)  
 Sales: Windjam Properties 919-880-7516  
 Plan by Dynamic Design Group

- Gourmet kitchen with professional series Thermador appliances
- Custom designed Tuscan pool with pavilion and outdoor kitchen
- Luxurious custom designed plan implementing universal design and 3-stop elevator
- Master landscape design includes cobblestone entry with stone columns, Zeon Zoysia lawn and automated lighting
- Tranquil, wooded 4+ acre estate lot buffered by Cobb Creek
- Oversized 3-car garage with detached 4-car garage including power lift and second floor shop
- High efficiency heating and cooling units with fresh air supply with projected HERS Score of 52
- Sealed crawl space to improve efficiency and air quality in home
- Enhanced home lifestyle package, including home automation



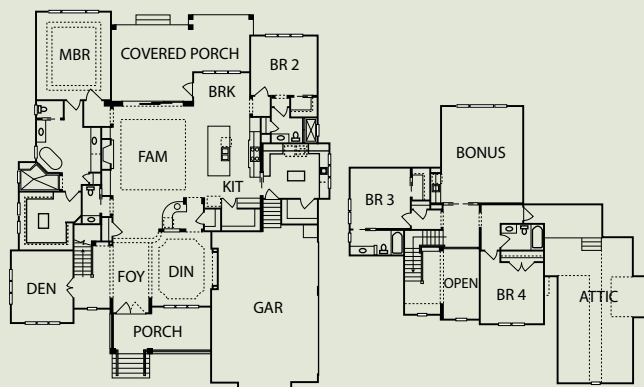
**DIRECTIONS:** From Chapel Hill: Take 15-501 to Mt. Gilead Church Rd. Take first left just past Fearington Village on Mt. Gilead Church Road. The Hamptons are 1 mile on right.

FROM CARY: US 64W cross Jordan Lake, at the Valero gas station take a right on Mt. Gilead Church Rd. 3.5 miles on left.

C  
23

**THE CASWELL** 3,910 SF \$869,900  
**The Hamptons: 151 Rolling Woods Court, Pittsboro**  
 Arthur Rutenberg Homes 919-900-7090  
[www.ArthurRutenbergHomes.com](http://www.ArthurRutenbergHomes.com)  
 Sales: Arthur Rutenberg Homes 919-730-4295  
 Plan by Arthur Rutenberg Homes

- Furnished and fully decorated model home
- Master suite, guest bedroom and den all on the first floor
- Gourmet kitchen with hidden pantry
- Stainless steel island in oversized utility room
- Great room with 11' ceiling and stained beams
- 10-12' ceilings throughout the first floor
- Master bath with free-standing tub and walk-in shower
- Curved wet bar with wine closet and wine cooler
- Outdoor fireplace with double paver porch and retractable screens
- ENERGY STAR® Certified with sealed crawl space



**DIRECTIONS:** From Chapel Hill: Take 15-501 to Mt. Gilead Church Rd. Take first left just past Fearington Village on Mt. Gilead Church Road. The Hamptons are 1 mile on right.

FROM CARY: US 64W cross Jordan Lake, at the Valero gas station take a right on Mt. Gilead Church Rd. 3.5 miles on left.



**SYKES II**                      **2,420 SF**                      **\$331,517**  
**Powell Place: 110 Aster Lane, Pittsboro**

M/I Homes  
[www.MIHomes.com](http://www.MIHomes.com)

Sales: M/I Homes                      919-607-1317

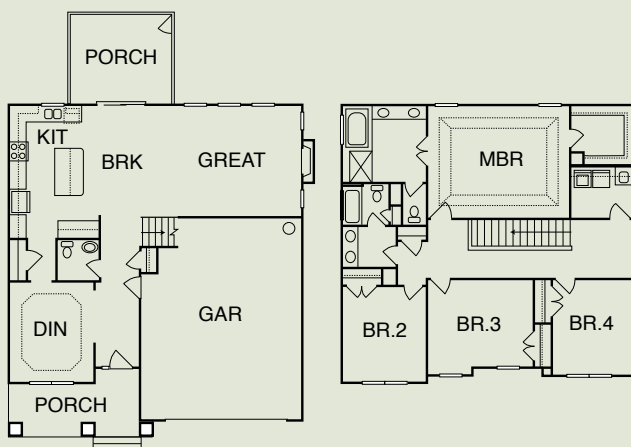
Plan by M/I Homes

- Open kitchen, breakfast, family room
- Formal dining room with tray ceiling
- Generous owners' suite with glamour bath
- Open loft for family gatherings
- Two-car garage
- Established master planned community
- Walking trail, recreation park, playgrounds, pond with fountain



**Home Innovation**  
 NGBS GREEN CERTIFIED™

- Easy access to Hwy 64, 15/501, UNC
- ENERGY STAR® Certified
- 30-year transferable structural warranty



**DIRECTIONS:** From I-40 West, turn off at Exit 273A/Chapel Hill and follow Route NC 54 West. Stay on 54 West three miles until you come to an overpass. Just beyond the overpass, turn right on NC 54 West/15-501 South bypass. Stay on bypass 2.2 miles and exit at the Chapel Hill-Pittsboro exit. Turn left onto US 15-501 South. Continue south on 15-501 (Chapel Hill Road) until crossing over Hwy 64. Take the first right onto Powell Place Lane, right on Millbrook. Right on Aster Lane.



## Good Wood Plain and Simple

Imported • Reclaimed • Domestic  
 Wide Plank Wood Flooring  
 Precision Milled • Long Lengths  
 Mill Direct Prices  
 Visit our showroom



Bill Campbell • 919-414-9070  
 309 N. Greensboro St, Carrboro, NC 27510  
 919-942-3153

[www.fitchwoodflooring.com](http://www.fitchwoodflooring.com)

## Tour two beautiful model homes at Jordan at Southpoint.



The Fairmont – 2,724 sq. ft.

The Parade of Homes is a perfect time to compare homes and see what you like. Come see for yourself how a Meritage home can save as much as 50% on energy costs. It's like having extra money in your pocket every month. That's because our homes are built with incredibly energy-efficient features that include:

- Spray-foam insulation
- Low-E2 vinyl windows
- CFL lighting
- Water-efficient fixtures
- SEER 15 HVAC
- ENERGY STAR® appliances

**Jordan At Southpoint** – From the high \$200s

Visit our other Durham, Orange, and Chatham county locations: Legacy at Jordan Lake-Chapel Hill and Meadows at Southpoint-Durham.

**877-203-4644 | [meritagehomes.com/raleigh](http://meritagehomes.com/raleigh)**



**Setting the standard for energy-efficient homes™**



Pictures and other promotional materials are representative and may depict or contain square footages, elevations, options, upgrades, extra design features, decorations, floor coverings, decorative light fixtures, custom paint and wall coverings, window treatments (such as shutters, drapes, etc.), landscaping, sound and alarm systems, furnishings, appliances, and other designer/decorator features and amenities that are not included as part of the home and/or may not be available in all communities. The potential amount of energy savings is based on a 2012 average HERS score of 65 or less. Actual energy savings and performance of any home or any of its features may vary widely, and may be more or less than indicated savings and performance, depending on the personal energy consumption choices of the occupants and changes in energy provider rates and programs. Broker must accompany buyer on their first visit. Broker commission available on specific plans only and are subject to availability. Home and community information is subject to change, and homes to prior sale, at any time without notice or obligation. Not an offer or solicitation to sell real property. Offers to sell real property may only be made and accepted at the sales center for individual Meritage Homes communities. See sales associate for details. Meritage Homes® is a registered trademark of Meritage Homes Corporation. ©2015 Meritage Homes Corporation. All rights reserved.



## Modern | Tuscan | CRAFTSMAN | *Elegant* | Traditional



Whichever Style You Prefer –  
**THE CHOICES ARE ENDLESS**  
At Stock Building Supply.

**STOCK**  
**Building  
Supply**

*Our Showroom Is Your Showroom*

APEX  
919.362.8377

GARNER  
919.772.1388

\*RALEIGH  
919.828.7471

YOUNGSVILLE  
919.562.6601

[www.stockbuildingsupply.com](http://www.stockbuildingsupply.com)

\*Showroom Location



# SAUSSY BURBANK

BEAUTIFUL-TIMELESS-CRAFTSMANSHIP

Since 1989, Saussy Burbank has been a force in bringing relevant, sustainable developments to the Carolinas. We've built everything including upscale custom infill homes, affordable housing and award-winning traditional neighborhood developments.

SAUSSYBURBANK.COM



## RALEIGH

Inside the Beltline - (919)-781-5225  
From the \$700s-\$900s

## CHAPEL HILL

Briar Chapel - (919)-641-2093  
From the \$200s-\$450s

## CARRBORO

Claremont South - (919)-641-2093  
From the \$200s-\$700s

## HILLSBOROUGH

Forest Ridge - (919)-245-8411  
From the \$250s-\$450s

## HOLLY SPRINGS

12 Oaks - (919)-926-5567  
From the \$400s-\$700s



NAME

Lily

AGE

8

HOBBY

Collecting  
bugs

TALENT

A vivid  
imagination

NEW FAVORITE THING

Gardening

FAVORITE PLACE

The Briar  
Patch



**Tour our 11 Models during Parade of Homes**  
Saturdays & Sundays Oct. 3-18 • [BRIARCHAPELNC.COM/PARADE](http://BRIARCHAPELNC.COM/PARADE)



# This place is made for me.

When she isn't nurturing the **community garden**, Lily is excelling in art classes at school or chasing her dog, Missy, through **900 acres of open space** with neighborhood friends. She even slows down long enough for **movie nights at the Briar Club** and evenings on her front porch. Briar Chapel is definitely made for her—see how it's made for you at **BRIARCHAPELNC.com**.



Follow Us



AWARD-WINNING GREEN HOMES, RANCH-STYLE VILLAS  
AND CUSTOM HOMES FROM THE \$190,000s – \$900,000s

Saussy Burbank • Lennar • Fresh Paint by Garman Homes  
Garman Homes • Homes By Dickerson • David Weekley Homes  
Drees Homes • Terramor Homes • MorningStar Homes

888.240.4755 • Brokers Welcome • Just south of downtown Chapel Hill on 15/501



Newland Communities is the largest private developer of planned residential and urban mixed-use communities in the United States from coast-to-coast. Together with our partner, North America Sekisui House, LLC, we believe it is our responsibility to create enduring, healthier communities for people to live life in ways that matter most to them. [www.newlandcommunities.com](http://www.newlandcommunities.com) and [www.nashcommunities.com](http://www.nashcommunities.com)



NNP-Briar Chapel, LLC ("Fee Owner") is the owner and developer of the Briar Chapel Community ("Community"). Certain homebuilders unaffiliated with the Fee Owner or its related entities (collectively, "Briar Chapel") are building homes in the Community ("Builder(s)"). Fee Owner has retained Newland Communities solely as the property manager for the Community. North America Sekisui House has an interest in one of the members in Owner. Newland Communities and North America Sekisui House are not co-developing, co-building or otherwise responsible for any of the obligations or representations of any of the Builders, and shall have no obligations to any buyer regarding a home purchase from a Builder. Purchasers of homes from any of the Builders waive any claims against Newland Communities and/or North America Sekisui House arising out of their purchase transaction. Prices, specifications, details and availability of Builder's homes are subject to change without notice. 2015 © Briar Chapel. All Rights Reserved. Briar Chapel is a trademark of NNP-Briar Chapel, LLC, and may not be copied, imitated or used, in whole or in part, without prior written permission.