

Business Record

JULY 17, 2015

The business journal serving Central Iowa's Cultivation Corridor

Price: \$1.75



THE PHOTO ISSUE

CEO **PERSONAL** PROFILES AFTER WORK





Finding You the Best.

CENTRAL IOWA'S EMPLOYMENT SOLUTION SINCE 1998

Our staff has extensive experience with recruitment and placement in:

Accounting and Finance / Banking and Mortgage / Engineering and Manufacturing

Human Resources / Information Technology / Insurance

Office Administration and Customer Service

Sales and Marketing



*Austin Palmer, President and
David Leto, Executive Vice President*

3737 WOODLAND AVENUE, SUITE 200, WEST DES MOINES 515.225.7000

thepalmergroup.com



CONTACT US
(515) 288-3336
circulation@bpcdm.com

FOLLOW US
www.businessrecord.com
FB: www.facebook.com/DMBusinessRecord
Twitter: @BusinessRecord

EDITORIAL

EDITOR
Chris Conetzkey
(515) 661-6081
chrisconetzkey@bpcdm.com

MANAGING EDITOR
Anne Carothers-Kay
(515) 661-6085
annecarotherskay@bpcdm.com

SENIOR STAFF WRITERS
Joe Gardyas
(515) 661-6084
joegardyas@bpcdm.com
Beats: Insurance & Investments | Health & Wellness
| Manufacturing & Logistics | HR & Education

Kent Darr
(515) 661-6083
kentdarr@bpcdm.com
Beats: Real Estate & Development |
Banking & Finance | Law & Government

Perry Beeman
(515) 661-6086
perrybeeman@bpcdm.com
Beats: Economic Development | Transportation |
Tech & Innovation | Energy & Environment

STAFF WRITER
Megan VerHelst
(515) 661-6082
meganverhelst@bpcdm.com
Beats: Culture | Retail & Business |
Sales & Marketing

COPY EDITOR
Stephen McIntire

ART & PRODUCTION

SENIOR GRAPHIC DESIGNER
Brianna Schechinger

GRAPHIC DESIGNERS
Adam Feller
Danielle Miller

PHOTOGRAPHER
Duane Tinkey

SALES

DIRECTOR OF ADVERTISING
Ashley Holter

DIRECTOR OF STRATEGIC PARTNERSHIPS
Carole Chambers

SENIOR ACCOUNT EXECUTIVES
Lori Bratrud
Katherine Harrington
Maria Davis

ADMINISTRATION

DIRECTOR OF OPERATIONS
Jason Swanson

BUSINESS MANAGER
Eileen Jackson

ACCOUNTING SPECIALIST
Becky Hotchkiss

ADMINISTRATIVE ASSISTANT
Jeanne Hammerstrom

OFFICE MANAGER
Laura Stegemann

INSIDE SALES REPRESENTATIVE
Alison Damon

LEADERSHIP

CHAIRMAN
Connie Wimer

PUBLISHER
Janette Larkin

Business Record® (USPS 154-740, ISSN 1068-6681) is published by Business Publications Corporation Inc., The Depot at Fourth, 100-4th Street, Des Moines, Iowa 50309, (515) 288-3336. Contents © 2015 Business Record. Published weekly. Annual subscriptions \$69.95. Single copy price is \$1.75. Copies of past issues, as available, may be purchased for \$4.50 each. Periodicals Postage Paid at Des Moines, Iowa. POSTMASTER: Send address changes to Business Publications, The Depot at Fourth, 100-4th Street, Des Moines, Iowa 50309.



TABLE OF CONTENTS

VOLUME 33 | NUMBER 28 | JULY 17, 2015

9 THE PHOTO ISSUE

CEO PERSONAL PROFILES AFTER WORK



PHOTO BY DUANE TINKEY

16

Denise Essman

President & CEO
Essman/Associates



SUBMITTED PHOTO

18

Eric Crowell

President & CEO
UnityPoint Health-Des Moines



PHOTO BY DUANE TINKEY

13

Rob Smith

Principal, Co-Founder
Architects Smith Metzger



PHOTO BY DUANE TINKEY

10

Randy Roth

Owner
Corporate Contracts

THIS WEEK

- 4 CALENDAR PICKS**
Your first look at upcoming events
- 4 ON THE MOVE**
Job changes, hires and promotions
- 6 MEGAN GRANDGEORGE**
Take a closer look at the director of marketing and public relations for Variety - the Children's Charity.
- 21 A SECOND CHANCE AT SUCCESS**
Local playwright's "Girls' Weekend" is on its way to Kansas, bringing it one step closer to publication.

VOICES

We want to hear from you. To submit an article for the Guest Opinion column or to send a letter to the editor, please contact editor Chris Conetzkey at (515) 661-6081 or chrisconetzkey@bpcdm.com.

- 25 RETURN OF THE RATS WITH ANTLERS**
The Elbert Files: By Dave Elbert
- 26 VALUE - THE KING OF SALES**
Sales: By Jeffrey Gitomer
- 26 MAKING CONTENT PART OF THE MIX**
Marketing: By Drew McLellan

WHO'S IN THIS ISSUE?

A list of local people and the page number of the article in which they are mentioned.

SCOTT CARLSON, 6
ERIC CROWELL, 18
DENISE ESSMAN, 16
MEGAN GRANDGEORGE, 6
RANDY ROTH, 10
KAREN SCHAEFFER, 21
MAXWELL SCHAEFFER, 21
ROB SMITH, 13
JOHN VIARS, 21

CORRECTION: The original version of Dave Elbert's July 3 column incorrectly characterized Gov. Terry Branstad's reaction to the Iowa Supreme Court's decision approving telemedicine abortions. It said Branstad was leaning in favor of appealing the decision after Branstad had told reporters: "I was very disappointed in the court decision, and we are going to be reading and reviewing and analyzing that and determining what is the best course of action for us to take." Two weeks after the decision, Branstad aide Jimmy Centers said the governor had not decided whether to appeal the ruling. The article also said Branstad "reportedly said he might urge Iowans in 2016 to vote against retaining members of the Iowa Supreme Court who backed the abortion ruling." Centers said the governor has not and will not take a position on whether the justices should be retained.

CALENDAR

NETWORKING CLIVE CHAMBER BIZ & BREWS

21
TUE

Host: Clive Chamber of Commerce
What: Join the Clive Chamber for a laid back networking event with drinks, food & prizes.

When: 4:30 to 6:30 p.m.

Where: Granite City

Register: clivechamber.org/

Cost: Free for members and guests

WEBINAR CUBA TRIP INFORMATIONAL SESSION

22
WED

Host: Greater Des Moines Partnership
What: This webinar will discuss the itinerary, cultural

destinations and experiences that participants will have during the trip.

When: Noon to 1 p.m.

Register: desmoinesmetro.com/en/calendar/

Cost: Free

YOUNG PROFESSIONALS GENYP CEO PANEL

23
THU

Host: genYP
What: The CEO Panel is designed to connect Young Professionals with successful and interesting

individuals within the Des Moines Region.

When: 8:30 to 10:30 a.m.

Where: Urbandale Chamber RODAN Board Room

More Information:

jschultz@urbandalechamber.com

Cost: Free genYP members, \$10 Urbandale Chamber members, \$25 non-members

CANDIDATE FORUM 2016 IOWA CAUCUS CONSORTIUM: MARTIN O'MALLEY

24
FRI

Host: The Greater Des Moines Partnership
What: Former Maryland governor and Democratic

presidential candidate Martin O'Malley will speak in Des Moines as part of the Caucus Candidate Forum Series.

When: 11:30 a.m. to 1 p.m.

Where: Iowa State Historical Building

Register: desmoinesmetro.com/en/calendar/

Cost: Free

CONVENTION AND SPORTS CALENDAR

July 23 to 25: Iowa State H.O.G. Rally; 500 expected attendance

July 24 to Aug. 1: Boys State Baseball Tournament; 33,000 expected attendance

July 25: Iowa All-State Baseball Showcase 7U - 14U; 2,260 expected attendance



To submit items for Calendar:

Go to www.businessrecord.com or email newsroom@bpcdm.com.

ON THE MOVE: Promotions, changes, appointments

LEADER SPOTLIGHT



Ryan Wise

was appointed as **director of the Iowa Department of Education** by Gov. Terry Branstad, effective July 1.



Emily Chafa

has been promoted to **Unemployment Insurance Appeals Division manager** with the **Unemployment Insurance Appeals Bureau**.



Courtney Maxwell Greene

was hired as **communications director** for **Iowa Workforce Development**.



Randy Clarkson

will step down at the end of July from his position as **president and CEO** of **Caldwell Banker Mid-America Group**.



Hollie Askey

has been named **executive director** of the **Warren County Economic Development Corp.**, replacing Jason White, who left the organization earlier this year for a similar position in Oshkosh, Wis.



Heather Worthington
American Equity Investment Life Insurance Company

Promoted to assistant vice president of new business
hworthington@american-equity.com



John Minogue III
Hubbell Community Management

Hired as a HOA field operations manager
john.minogue@hubbellrealty.com



**GREAT SOUTHERN
BANK**

BUSINESS BANKING

GreatSouthernBank.com/business

DAVID MARKS

515.473.6080 | 800.749.7113

dmarks@greatsouthernbank.com



ON THE MOVE: Promotions, changes, appointments



Thomas Yung
Hubbell Construction Services
Hired as an assistant project manager
tom.yung@hubbellrealty.com



Dusica Stankovic
RDG Planning & Design
Hired as an architect
dstankovic@rdgusa.com



Kelly Kloeppel
Coldwell Banker Mid-America Group, Realtors Northpark Office
Hired as a Realtor
kelly.kloeppel@cbdsm.com



Kenneth D. Klug
Grinnell Mutual Reinsurance Co.
Promoted to vice president of direct claims
kklug@gmrc.com



Kevin Farrell
Grinnell Mutual Reinsurance Co.
Promoted to vice president of reinsurance
kfarrell@gmrc.com



Doug Nauman
Grinnell Mutual Reinsurance Co.
Promoted to assistant vice president of reinsurance services
dnauman@gmrc.com



Lauren Augustin
Grinnell Mutual Reinsurance Co.
Promoted to assistant vice president of personal lines and farm casualty underwriting
laugustin@gmrc.com



Pam Elmitt
GuideOne Mutual Insurance Co.
Hired as a commercial general underwriter program manager
pelmitt@guideone.com



Dan Jensen
GuideOne Mutual Insurance Co.
Promoted to commercial underwriting manager
dcjensen@guideone.com



Steve Rindfuss
GuideOne Mutual Insurance Co.
Promoted to sales development and support director
srindfuss@guideone.com



Erik Gramenz
Palmer Group
Hired as a recruiter
egramenz@thepalmergroup.com



Sarah Hansen
Palmer Group
Hired as a recruiter
shansen@thepalmergroup.com



Evan Brooks
Palmer Group
Hired as a recruiter
ebrooks@thepalmergroup.com



Erin Hogenson
Palmer Group
Hired as a recruiter
ehogenson@thepalmergroup.com



Nicole Clark
BirdDogHR
Hired as an implementation specialist
nclark@birddoghr.com



Brandon Will
BirdDogHR
Hired as an implementation and solutions specialist
bwill@birddoghr.com



Emily Appelgate
Foster Group
Hired as a client service specialist
emilya@fostergrp.com



Angie Hyer
Associated Computer Systems
Promoted to senior accounting manager
ahyer@acsltd.com



Andy Bice
Associated Computer Systems
Hired as a client executive
abice@acsltd.com



Katy Kramer
Associated Computer Systems
Hired as a human resources manager
kkramer@acsltd.com



Kendra Guilliams
U.S. Bank
Promoted to small business specialist.
kendra.guilliams@usbank.com



Bryan Johnson
U.S. Bank
Promoted to small business specialist
bryan.johnson@usbank.com



Rudy N. Fors
U.S. Bank
Promoted to vice president small business & business banking team manager
Rudy.Fors@usbank.com



Please use our online form to submit your company promotions, staff additions and job changes at:
businessrecord.com/onthemove

Photos should be 250 dpi. We reserve the right not to publish low resolution photos.

INFORM CONNECT EMPOWER

JOIN THE CONVERSATION

A Business Record publication
Lift IQWA
Leading Insights on Female Talent

Received Gold in the
2015 AABP Annual
Excellence Awards for

BEST SPECIALTY NEWSLETTER

SIGN UP TODAY

www.BusinessRecord.com/LiftIOWA

A CLOSER LOOK: A local leader you should know

MEGAN GRANDGEORGE

Director of marketing and public relations, Variety - the Children's Charity

BY MEGAN VERHELST

After working eight years for the biggest event in the state of Iowa, Megan Grandgeorge is shifting gears — and locations — for a new role as director of marketing and public relations at Variety - the Children's Charity. Grandgeorge spent the better part of the past decade working in a basement office in the marketing department at the Iowa State Fair. It was a good fit and an even better experience for someone who says she loves event-driven work. Still, Grandgeorge said she was ready for something new and exciting and a little more "downtown." The newly created position at Variety fit the bill and it presents a challenge for Grandgeorge, who said she's new to nonprofits but passionate about the organization's mission.

You grew up in Illinois. How did you land in Des Moines?

I attended Drake University, and after graduation I returned to Chicago. I wasn't really finding a job there, so I decided to come back to Des Moines. That was the best decision I ever made. I ended up at Court Avenue Brewing Co. waiting tables, where I worked with Scott Carlson (owner of the restaurant). He told me he only wanted me to work there for a couple years, but he said he would give me the tools I needed and introduce me to the people who would help me get a job in my field. He always encouraged me and really helped me catch the spirit of Des Moines. Eventually I worked for Blank Park Zoo doing both events and food service before going to work for the Iowa State Fair. I loved it, but I was excited to land here. Working in the nonprofit sector is new for me. I do volunteer, but I expect a bit of a learning curve.

What does Variety do? What is its mission?

Our mission is to help low-income and special-needs children throughout the state. Every corner of Iowa is touched by Variety in some fashion. We host programs we organize ourselves, like our Kids On The Go program and Bikes for Kids. We also provide transportation for kids to activities and we just opened our first Star Playground, the Ashley Okland Star Playground in Des Moines. We are currently working on a new one in Cedar Rapids. The playgrounds are all adaptive for children with special needs.

Were you involved with Variety prior to working here? How did you learn of the job?

I was not actively involved with Variety, but I've attended events and my husband and I have donated to it through our restaurant (Le Jardin in Beaverdale). A board member here

who is a good friend of mine told me about the position and told me that I'd be great at it, so I applied.

You are the first person in this new position. Why was there a need for it?

It's a position they didn't have before. A lot of the work I will do fell to the development director. The rest was picked up by volunteers, so it was thought the best use of an open position would be for marketing. I think a lot of people can say they know Variety helps kids, but that's all they know. Outside of Greater Des Moines, I feel there's not as much awareness. I think there is a great need to explain our programs and our statewide mission.

Why was this something you felt you'd be a good fit for?

Variety is events-driven, and it all circles back to that and enjoying that kind of work. I am familiar with their programs, so how could I not want to be a part? Helping children is an easy thing to market, so it's simply dusting off skills I hadn't used in a while in order to rise to the challenge. I also thrive in a busy environment, and it's busy here. Owning a restaurant and working full time has taught me to be creative in overcoming challenges.

How do you plan to approach this job?

We're starting at square one in this position. Right now, I'm working on a marketing plan and identifying more goals. It's about brand awareness, but also about raising funds for the organization. My goal is to figure out where everything fits and learn about the organization before I start implementing plans. Our website is first on my list after that. Long-term, I want to focus on expanding awareness of Variety in other parts of the state beyond Greater Des Moines and Cedar Rapids. Aside from that, I just want to tell the stories, and I think that's what's missing — how Variety touches the lives of others.


What else do you enjoy doing outside of work?

I love camping and canoeing and reading. I don't currently volunteer. With the restaurant and transitioning to a new position, it's something I've had to say no to the last couple of months, but it's something I want to get back to. I've been a member of Junior League, which has helped me dabble in a lot of things. I've also been involved with Winefest Des Moines. ■



PHOTO SUBMITTED

AGE: 35**HOMETOWN:** Libertyville, Ill.**EDUCATION:** Bachelor's degree in journalism and mass communications, Drake University**FAMILY:** Husband, Tag Grandgeorge**CONTACT****Email:** megan@varietyiowa.com**Phone:** 515-243-4660**LinkedIn:** <http://linkd.in/1NsCq6A>**Closer Look suggestion?**

 Do you know a leader who's new or of growing interest in Des Moines' business community? Send an email to the editor with the name, position and reason you think your nominee should be interviewed by our reporters. Send suggestions to chrisconetzkey@bpcdm.com

TURN BACK the hands of time**FACIAL COSMETIC SURGERY**

FACELIFT
BROWLIFT
EYELID SURGERY
NOSE SURGERY
EAR SURGERY
CHIN AUGMENTATION
FACIAL LIPOSUCTION

AESTHETICS & SKIN CARE

BOTOX® COSMETIC
CHEMICAL PEELS
DERMABRASION
DERMAL FILLERS
DERMAPEN™
MICRO-NEEDLING
HYDRAFACIAL®
INTENSE PULSED LIGHT
LASER HAIR REMOVAL
LASER SKIN RESURFACING
LATISSE®
SKINMEDICA®
ZO® SKIN HEALTH

koch
FACIAL PLASTIC SURGERY *to go*

4855 MILLS CIVIC PKWY #100
WEST DES MOINES, IA 50265
515.277.5555
WWW.KOCHMD.COM



DR. BRENT KOCH

DR. CODY KOCH



dsm IS PLEASED TO ANNOUNCE THIS YEAR'S
SAGES OVER 70 HONOREES:

MARGO BLUMENTHAL
PHILIP DORWEILER
VERNON JOHNSON
GARY KIRKE
ELVIN MCDONALD
POLLY MOORE
KENNETH QUINN
JACK WAHLIG

TO BE HONORED
NOVEMBER 10, 2015

5-7 P.M. | THE TEMPLE FOR PERFORMING ARTS

Give at www.desmoinesfoundation.org/sages

Donors to the fund are eligible to receive Endow Iowa Tax Credits, a 25 percent state tax credit. Donors may indicate who their donation is on honor of, and the Community Foundation will notify the individual of the gift.

PRESENTED BY



**PURCHASE TICKETS AT
DSMMAGAZINE.COM**

PRESENTING PARTNER



VENUE SPONSOR

**THE TEMPLE FOR
PERFORMING ARTS**

SUPPORTING PARTNERS



BELIN MCCORMICK
ATTORNEYS AT LAW



VIDEO & FOOD SPONSOR

Audi Des Moines

FOSTER GROUP® PRESENTS

VECTORS & VIEWPOINTS

2015 Business
Record Edition

VECTOR: SMALL CHANGES MAKE A BIG DIFFERENCE



Kent Kramer, CFP®, AIF®
Chief Investment Officer
Lead Advisor

Today's question:

*Does your investment
plan complement your
interests? Should it?*

What's the goal of your investment portfolio? For many investors the answer is both unclear and impersonal. Rather than, "beating the market" or "don't lose very much" or even "to retire someday," wouldn't a better answer be, "to connect my investments and my interests in ways that raise the probability of success in accomplishing my specific, quantifiable goals?"

At Foster Group, the very first steps toward making this connection and designing a personal and purposeful portfolio happen in carefully guided, focused conversations. These concretely describe and comprehensively map out your values, goals, accomplishments. They also include your most important relationships of the past, present and future, and, of course, your uniquely personal interests, ranging from hobbies and travel to causes and philanthropy. When this level of understanding is integrated with your current financial circumstances in a comprehensive manner, your portfolio becomes purposeful and the measure of successful investing as personal as your unique interests.

Foster Group
Recent Recognitions



Serving Individuals, Institutions, and Qualified Plans.

Contact us today at **877-561-1047** or visit
fostergrp.com/BusinessRecord.



FOSTER
GROUP

1001 Grand Avenue
West Des Moines, IA 50265

PLEASE NOTE LIMITATIONS: Please see Important Advertising Disclosure Information and the limitations of any ranking/recognition, at www.fostergrp.com/disclosures. A copy of our current written disclosure statement as set forth on Part 2A of Form ADV is available at www.adviserinfo.sec.gov.

Drake
UNIVERSITY



powerful

Dave Nelson
Chairman & CEO
West Bank
B.S., M.B.A.

"Earning your M.B.A. from Drake is a powerful way to differentiate yourself. It taught me to be very organized by scheduling small blocks of time. The process also helped me develop a greater curiosity and a healthy level of skepticism. I enjoyed the experience, and it made me a much better student for life."

515-271-4701
www.drake.edu/graduate

THE PHOTO ISSUE

CEO **PERSONAL** PROFILES AFTER WORK

Whether it's taking a dive in the ocean, or out of a plane, mastering a garden or the didgeridoo, Greater Des Moines business leaders have their own unique ways to kick back after work. For the fourth straight year our reporters and staff photographer Duane Tinkey, take a photographic peek at executive lifestyles. - *Chris Conetzkey, editor of the Business Record*

16



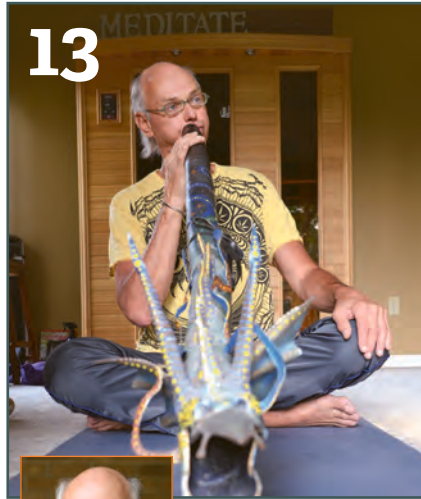
Denise Essman
President & CEO
Essman/Associates

18



Eric Crowell
President & CEO
UnityPoint Health-
Des Moines

13



Rob Smith
Principal, Co-Founder
Architects Smith Metzger

10



Randy Roth
Owner
Corporate Contracts

Past CEO Profiles



To see the photo slideshows of past CEO personal profiles, go to businessrecord.com/photoissue



David Maxwell



Tim Zarley



Kim Waltman



Rob Denson





RANDY ROTH

OWNER, CORPORATE CONTRACTS

HOBBY: SKYDIVING PHOTOGRAPHER

SUBMITTED PHOTO



PHOTO BY DUANE TINKEY



PHOTO BY DUANE TINKEY



RANDY ROTH

OWNER, CORPORATE CONTRACTS

SKYDIVING PHOTOGRAPHER

BY JOE GARDYASZ

Randy Roth made his first skydive when he was 21, after a buddy of his dared him to dive with him and subsequently called Roth “chicken” enough times that he went through with it.

And he was hooked.

He got his expert license in 1984, but after he got married and they had kids he slowed down his skydiving to a handful of jumps a year. In 2006, as his children were getting older, he began jumping more frequently again.



PHOTO BY RANDY ROTH

“IT’S TOTALLY FUN TO DO. IT’S SOMETHING THAT GETS IN YOUR BLOOD AND NEVER GETS OUT.”

Now 58, Roth has completed more than 1,500 jumps, including more than 30 he’s already done this year. Since 2007 he has shot video and photos of other skydivers, using a special helmet camera setup, for SkyDive Iowa in Brooklyn.

The thrill comes from jumping out of a perfectly good airplane to hurtle earthward at 120 mph, usually from a height of 10,000 feet for about 35 seconds of free fall. Or, for a longer fall, he sometimes jumps from as high as 14,000 feet. At about 3,000 feet, he pulls the rip cord, slowing to a drop of 20 mph to glide to the ground beneath a colorful square canopy.

“I’ve never had to use my reserve,” he said with a grin, gently tapping his wooden kitchen counter. ■



Instead of Ericka trying to fit into our schedule, we fit into hers.

Ericka doesn't have an opening until a week from Thursday. But what if she needs medical attention before then? No problem. UnityPoint Clinic offers more options than ever to make care convenient. So Ericka can opt for a virtual visit with a doctor online or by phone between business meetings. Or head to an Urgent Care clinic over the weekend. Even email a question to her doctor over a latte. At UnityPoint Clinic, we figure letting you choose how you want to get coordinated care from us is, well, healthier.

The point of unity is you.®

Find a doctor at
unitypoint.org



UnityPoint Clinic

Furniture for all budgets
Design for all spaces
Solutions for all businesses



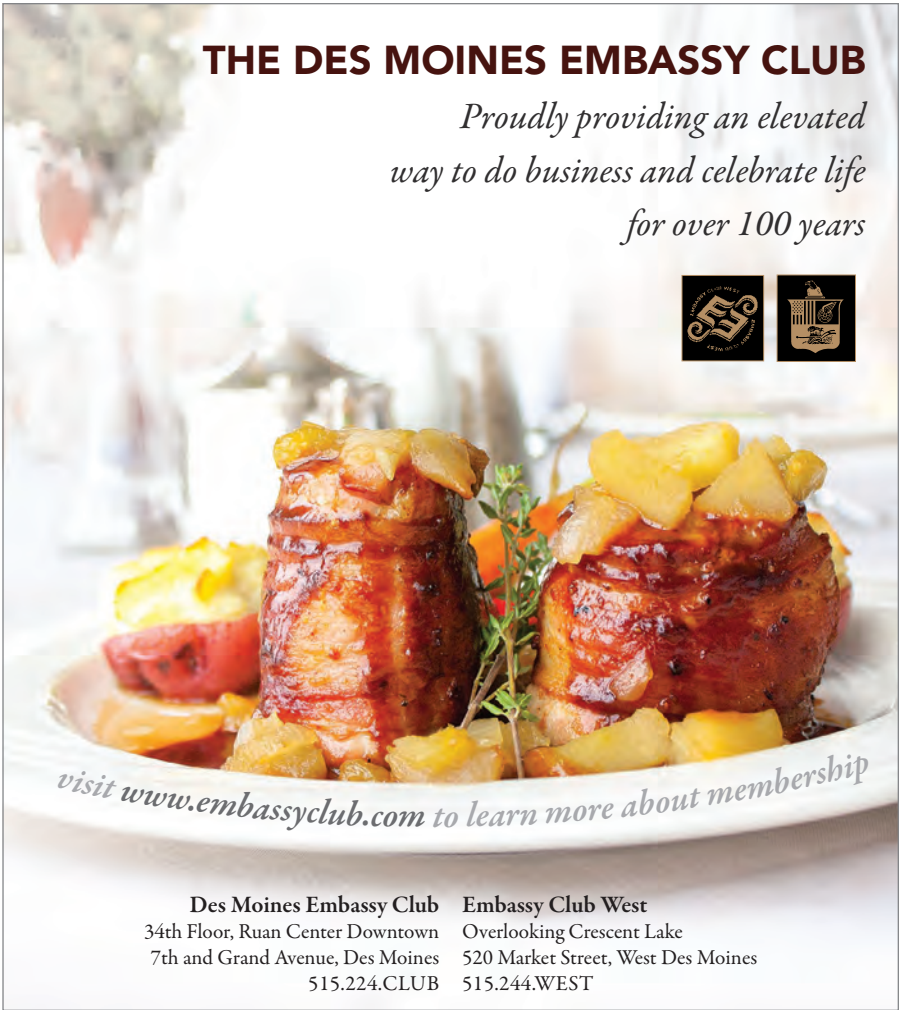
VISIT OUR SHOWROOM TODAY!

all makes
office interiors

500 E. Court Ave., Ste 150 Des Moines | 515.282.2166 | www.allmakes.com

THE DES MOINES EMBASSY CLUB

Proudly providing an elevated way to do business and celebrate life for over 100 years



visit www.embassyclub.com to learn more about membership

Des Moines Embassy Club	Embassy Club West
34th Floor, Ruan Center Downtown	Overlooking Crescent Lake
7th and Grand Avenue, Des Moines	520 Market Street, West Des Moines
515.224.CLUB	515.244.WEST



ROB SMITH

PRINCIPAL, CO-FOUNDER, ARCHITECTS SMITH METZGER

HOBBY: PLAYING THE DIDGERIDOO



ROB SMITH

PRINCIPAL, CO-FOUNDER
ARCHITECTS SMITH METZGER

PLAYS THE DIDGERIDOO

BY KENT DARR

"This is the story," Rob Smith says as he picks up what appears to be a 3-foot shank of bamboo.

"The didgeridoo came from Australia. Trees fell to the ground and termites hollowed them out. The wind blew through the hollow tree and made this sound. The people found them and the medicine men blew through them to heal people."



"I PLAY IT TO **RELIEVE STRESS**. AT THE OFFICE I'M A VERY **EXTROVERTED GUY**, BUT I NEED MY DOWN TIME."

Those aboriginal people were walking around 1,500 years ago or so. The sound they made with the instrument was deep and resonant and seemed to flow in waves.

Smith has been playing the didge, as he calls it, for about 15 years. It has a calming influence. "I play it to relieve stress," he said.

Smith has four didgeridoos, two made from PVC pipe that has been elaborately decorated — one of them with a dragon's head fashioned in the plastic — one made of blood-red eucalyptus, and one made from bamboo that was harvested in Hawaii.

He plays by fluttering his lips, creating back pressure that reverberates the length of the instrument. Smith said he doesn't consider himself a musical person; the drone of the didge helps clear his mind during daily yoga exercises, followed by a few minutes of meditation.

"I was already doing yoga for daily stress relief, and it just seemed a natural part of it." ■

Your success is our goal!



At Two Rivers Bank & Trust, we make it simple to do business with us.

We focus on your banking so you can focus on your business. Talk to a Two Rivers Bank & Trust business expert and start banking better today!



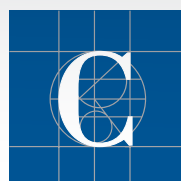
Des Moines • 515-331-3304 West Des Moines • 515-223-3500
Ankeny • 515-964-BANK (2265)

Member FDIC

tworiversbank.com  

Business Record

recognizes



CAPTRUST

AS THE SPONSOR OF THE **Woman Business Owner of the Year Award** Thursday, August 13, 2015

Tickets available at www.businessrecord.com/events



The Standard of Excellence

Thank you for your partnership.

www.wdmchamber.org



DENISE ESSMAN

PRESIDENT & CEO, ESSMAN/ASSOCIATES

HOBBY: MASTER GARDENER



PHOTOS BY DUANE TINKEY

DENISE ESSMAN

PRESIDENT & CEO, ESSMAN/ASSOCIATES

MASTER GARDENER

BY MEGAN VERHELST

Denise Essman often finds herself abandoning a cup of coffee she's enjoying on her porch to pull a stray weed from a flower bed. Before she knows it, six hours have passed, many more weeds are gone, and her coffee is long forgotten.

Essman, president and CEO at Essman/Associates in Des Moines, is a master gardener, certified through the Polk County Extension Office, so it's not uncommon for her to get lost in creating beautiful outdoor spaces. It's what she likes most about gardening.



“GARDENING CAN WORK IN ANY SPACE, AND I ENJOY TURNING (THOSE SPACES) INTO SOMETHING BOLD AND BEAUTIFUL.”

“It's therapeutic for me ... and it's the challenge,” she said. “(Gardening) is like baking a cake — there are so many ways to do it, but the challenge is finding the right combinations to help things grow and thrive.”

Essman developed a love of gardening through her grandmother, whom Essman helped in her own gardens.

Essman and her husband, Allen, enjoyed gardening together. At their homes, the couple maximized outdoor spaces to create elaborate and purposefully executed gardens. Their urban home on Southern Woods Drive off Park Avenue in Des Moines was on the Polk County Master Gardeners Tour. Eventually, they purchased an expansive acreage outside Cumming, determined to turn the home and the land surrounding it into an oasis for their retirement.

But Essman's husband passed away in 2010, and this year she sold their Cumming home and relocated to a West Des Moines townhome with ample outdoor space. She's already turning it into an outdoor sanctuary. Now, she can add 'suburban' to her list of gardening challenges accomplished. ■

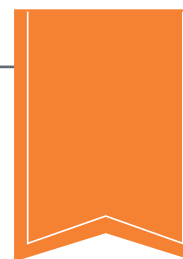


ERIC CROWELL

PRESIDENT & CEO, UNITYPOINT HEALTH - DES MOINES

HOBBY: UNDERWATER PHOTOGRAPHY





ERIC CROWELL

PRESIDENT & CEO, UNITYPOINT
HEALTH - DES MOINES

UNDERWATER PHOTOGRAPHY ENTHUSIAST

BY PERRY BEEMAN

When Eric Crowell became a certified scuba diver 24 years ago, it didn't take him long to decide that photography would be his main underwater passion.

The president and CEO of UnityPoint Health-Des Moines has dived in some spectacular spots — Florida, Australia, the Cayman Islands and Fiji, for example.



PHOTO BY ERIC CROWELL

“I SAW THAT **BLUE WALL** WITH 200-FOOT VISIBILITY, AND I THOUGHT, ‘HOLY COW! THIS IS **WHERE I WANT TO BE.**’”

It was on a trip to the Cayman Islands that he decided he would forevermore see moray eels, sharks, corals and colorful fish mostly through the viewfinder of a camera. A bubble-fronted, very nice camera.

“I saw that blue wall with 200-foot visibility, and I thought, ‘Holy cow! This is where I want to be.’”

He studied with Cathy Church, a photographer in the Caymans. He stopped calling himself simply a diver. “The diving is just the bus pass to get me to the photography,” Crowell said.

Now, he jumps in the water with several thousand dollars' worth of fancy digital camera equipment. He's logged approximately 340 dives, most of them with his dive buddy wife, Kathy.

It's been a colorful experience, as these stunning photos show. ■

BusinessRecord PRESENTS

WOMEN *of* INFLUENCE

THURSDAY, AUGUST 13 | 4-7 P.M.

Des Moines Marriott Downtown, 7th & Grand
4 p.m. Hors d'oeuvres and cash bar reception
5:15 p.m. Presentation of honors
Individual \$35; Table of 10 \$300
Tickets: www.businessrecord.com/events

PLEASE JOIN US AS WE HONOR THESE OUTSTANDING WOMEN

THE HONOREES

- Dr. Susan Beck** Medical director | Katzmman Breast Center at Mercy
- Pat Boddy** Sustainability director | RDG Planning & Design
- Elisabeth Buck** Chief community impact officer | United Way of Central Iowa
- Ann Campbell** Mayor | City of Ames
- Mashal Husain** Vice president | World Food Prize Foundation
- Kathryn Kunert** Vice president business & community development | MidAmerican Energy Co.
- Kim Reynolds** Lieutenant governor | State of Iowa

CAPTRUST WOMEN BUSINESS OWNER OF THE YEAR

- Katie Roth** Owner | Portico Staffing

MEREDITH EMERGING WOMAN OF INFLUENCE

- Sara Kurovski** Mayor | City of Pleasant Hill
Manager of sustainability | Kum & Go

SPONSORED BY



Woman Business Owner of the Year
SPONSOR



Emerging Woman of Influence
SPONSOR



A SECOND CHANCE AT SUCCESS



Karen Schaeffer (middle) and the cast of Girls' Weekend.

**"GIRLS' WEEKEND"
ON ITS WAY TO
KANSAS, BRINGING
IT ONE STEP CLOSER
TO PUBLICATION**

BY MEGAN VERHELST

Last fall, the Des Moines Community Playhouse took a chance on an original play penned by a local author who had never written a play before.

It was a huge risk, but one that paid off big.

Last October, "Girls' Weekend," a modern comedy farce written by Karen Schaeffer of Des Moines, brought in \$110,000 in ticket sales, exceeding its goal nearly threefold.

But the success of "Girls' Weekend" will not stop in Des Moines. In fact, a community theater in Lawrence, Kan., already added the show to its 2015-16 season. For a number of reasons, this spells good news for Schaeffer, who — in addition to at least two new plays the public has yet to see — has big plans for her first project, such as seeing it on more stages outside Des Moines and, ultimately, publication.

Originally from Texas, the Schaeffers moved to Des Moines in 1986. Both Karen and her husband, Maxwell, a radio personality on 93.3 KIOA who helps his wife with the business side of being a playwright, have been involved in community theater for years.

At one point, though, 49-year-old Karen eventually stepped back to look at the shows included in the seasons of Des Moines' local playhouses.

"There was nothing for women in my age group," Karen said. "You usually play someone's mom, and they have an expectation of what you should look like as a mom, and I didn't look that way."

So, in Karen's words, she stopped complaining and did something about it. Karen finished the first draft of "Girls' Weekend" in two weeks.

It took two years to perfect.

"It's the kind of play that has fun, contemporary characters and strong female leads," she said. "It's a modern farce, and women were doing physical comedy alongside the men. The men were still intelligent and had great comedy too, but I wanted the women to be central in the story."

Word of Karen's play made it to John Viars, executive director of the Des Moines Community Playhouse. After he read the play, he asked to hold a table read. Close to 150 people showed up for the table read, Karen said, adding that a typical turnout is about 50.

It was a good omen for "Girls' Weekend," and it wasn't long before the play became part of the Playhouse's 2014-15 season. It was the first original play to be performed on the Playhouse's main stage in the history of the organization.

Karen attributes that success to how the play was marketed prior to its debut.

"Since it was brand new, people wanted to see these characters before it hit the stage. We did some video of actors playing their characters, and focused a lot on social media," Karen said. "We told the actors and actresses, 'You have to get your friends involved. And in order to make sure this show sells, you have to get people to follow you as your character.' We did a lot of things ahead of time just so word of mouth would carry us through the weekend."

Behind the scenes, the Schaeffers, along with Playhouse staff, used standard figures set by the Dramatists Guild for licensing a play. The Playhouse set a ticket revenue goal of \$30,000. Of the \$110,000 earned by "Girls' Weekend" in ticket sales, Karen received 5 percent.

NEXT ON STAGE FROM KAREN SCHAEFFER

"FORGOTTEN" | COMEDY

A woman hits her head and can't remember the last ten years. As she slowly regains her memory, the ruse her ex-husband, who is about to head off on a honeymoon with his new wife, created to protect her from emotional distress starts to unravel in many hilarious ways.

"CHOICES" | ROMANTIC COMEDY

The owner of a popular cupcake business re-enters the dating scene a couple years after losing her husband and soon finds herself in a love triangle with two suitors — one younger, one older — vying for her heart. Her two best friends harbor a secret involving the suitors in a sexy, hilarious romp.



"We hit that goal by the end of the first weekend," she said.

Now that the play has finished its run in Des Moines, the end goal for "Girls' Weekend" is to publish it. But there are steps the Schaeffers must take and boxes to check off before that becomes reality.

"You can't get a play publisher to look at a script unless it's been produced in at least a couple reputable places," Maxwell said. "Publishers also prefer it not just be in local theaters."

And because "Girls' Weekend" is unpublished, the Schaeffers are required to do the necessary work to make sure the play is seen and marketed to theaters outside Des Moines.

Karen joined the Dramatists Guild, which provides a good template for the business side of both licensing and publishing her play.

The community theater in Lawrence approached the Schaeffers about producing "Girls' Weekend." In turn, the Schaeffers presented the production to the theater board. The goal was to convince board members the production would be a good investment. Ultimately, the board approved adding "Girls' Weekend" to Theatre Lawrence's 2015-16 season.

Will the Schaeffers make as much money as they did in Des Moines? Probably not, Maxwell said.

"The (Des Moines) Playhouse has more shows, and they can sell more seats," he said. "When you license a play, your pay is based on the size of the house, what size market it's in, if it's a nonprofit or for-profit — all those things change the rate."

Standard rates paid to playwrights by small venues like Theatre Lawrence range from \$50 to \$100 per performance, Maxwell said, published or unpublished.

"Someone might write something that plays on Broadway, but then a small theater with 3,000 seats licenses it, the author of that play might only make \$300. Unless you get a hundred theaters doing your show, you're not going to get rich," he said. "But Karen and I grew up in community theaters. We understand the value of a venue producing your play. It's not necessarily about making money."

Although "Girls' Weekend" is to be on stage in Lawrence sometime early next year, the Schaeffers can't leverage that as a second venue to publish the play until it's performed. Meanwhile, they will continue to look for more the-

"first produced at the Des Moines Community Playhouse." The Schaeffers also have agreed to donate back a percentage of what they make on "Girls' Weekend" to the organization.

Meanwhile, Karen has finished writing

"I THINK 'GIRLS' WEEKEND' WILL CATCH FIRE WHEN IT'S PUBLISHED. IT HAS THAT MARKETABILITY. BUT FOR NOW, WE MUST BE PATIENT AND GET IT IN FRONT OF AS MANY PEOPLE AS POSSIBLE."

— Maxwell Schaeffer

aters that accept unsolicited scripts, Maxwell said, to get "Girls' Weekend" that much closer to publication.

"It might be another year or so before we can even think about publishing it," Karen said, "but most scripts are being read in August and September so playhouses can select the shows for the next season. It would be fabulous if we could get 'Girls' Weekend' in three or four more venues."

Maxwell said a theater in Florida has expressed interest, but there was hesitation since "Girls' Weekend" is unpublished.

Another challenge, in addition to the play being unpublished, is gender-based. Breaking that barrier is a challenge in itself, Maxwell said. Fewer than 20 percent of plays are written and produced by female authors, and even fewer get published, he added.

"It's tough for female authors to break into the higher levels of playwright," he said. "I think 'Girls' Weekend' will catch fire when it's published. It has that marketability. But for now, we must be patient and get it in front of as many people as possible."

Once "Girls' Weekend" does appear on stages outside Des Moines, the play will be billed as

two new romantic comedies. "Choices" saw its first table read at the Des Moines Playhouse on May 4, and "Forgotten" has been through two table reads. In between the two new plays and her full-time job as an administrative assistant at Iowa Public Television, Karen wonders what it might be like to write a musical.

And still, the people of Des Moines continue to rally behind "Girls' Weekend," from simply spreading the word to offering to foot the bill for airfare costs when the Schaeffers travel to theaters interested in producing the play.

The momentum is there, and the Schaeffers have their eyes set firmly on their goal.

"It's a matter of trying to get published. How do you get published? The play has to be produced," Maxwell said. "In order to do that, you need to start developing relationships like anyone else. That, and a little bit of luck." ■



MEGAN VERHELST

Business Record Culture beat reporter

HAVE AN IDEA OR TIP?

(515) 661-6082 | meganverhelst@bpcdm.com

Twitter: @MeganVerHelst

WE CATER!



Green is the new grease
Lighter, fresher, healthier food
for all your catering needs

Wraps, salads, paninis, bagged lunches,
breakfast, and more!

Whether for 10 people or 500 people,
we can handle it.

For every order over \$250, receive a \$25
gift card and a dozen cookies – free!



WE DELIVER!



9250 University #113
West Des Moines, Iowa 50266

515.518.2060
desmoines.1@mixedgogreen.com

Go to www.mixedgogreen.com
for our "healthier for you" menu

This kind of WONDERFUL only comes around once a year.



**DON'T
MISS THE
2016 BOOK
OF LISTS**

Watch your inbox this summer for an opportunity to update
your company's information. Not included last year?
Contact bookofflistseditor@bpcdm.com

**ADVERTISING SPACE RESERVATIONS ARE AVAILABLE
THROUGH OCTOBER 13TH. PLACEMENT IS LIMITED.**

advertising@bpcdm.com | (515) 288-3338

PRESENTING SPONSOR

IOWA STATE UNIVERSITY
COLLEGE OF BUSINESS



IMPROVE YOUR BOTTOM LINE

No matter what size business you own, MidAmerican Energy Company has rebates for many of the energy-efficient systems you need. And with **EnergyAdvantage®** programs, you benefit from the incentives, assessments and expert advice that are available. The power is in your hands with MidAmerican Energy.



800-894-9599 www.midamericanenergy.com/ee

Insiders Get Discounts to Business Record Events

As a member of the Business Record Insider's Club you are entitled to a 15% discount on tickets to all Business Record events. These include:

- Economic Forecast
- Three Power Breakfasts
- Forty under 40 Awards Presentation & Reception
- Commercial Real Estate Trends and Issues Forum
- Women of Influence Awards Presentation & Reception

These events are excellent opportunities to come together with other business and community leaders to discuss topics important to the business community, recognize individuals for outstanding achievement, networking, etc.

To receive your 15% Business Record Insider ticket discount enter the promo code in the "Promotion Code" field of the order form. The discount will be applied at check out.

Not currently receiving the Business Record but would like to become a member?

Go to businessrecord.com/membership
and get start your own membership for as low
as \$43.95/year.



Questions? Contact us at
circulation@bpcdm.com or 515.288.3336.





Business Connection

INVEST AND ENGAGE IN URBANDALE

VOLUME 2, NUMBER 7
JULY 2015



THE ART OF THE CITY

Business Engagement Contributes to Local Identity

Urbandale businesses practice outstanding corporate citizenship through their donations of time, money and sometimes art, as is the case with "Beacon of Hope" (pictured at left). This sculpture, located at Meredith Park, is 20 feet tall and has an LED lighted tip. Quality Manufacturing Corporation created and donated this sculpture in honor of Tom Carder, past president of the company, who passed away earlier this year. A unique aspect of Urbandale is its exceptionally engaged business community. Opportunities abound for businesses to get involved and to donate time and resources for preserving one of the city's most beloved assets: the parks and trails system. Companies interested in hosting a park or trail cleanup day can contact Jan Herke, parks and recreation director, at jherke@urbandale.org for more information.

IOWA-MADE DEFINES QUALITY MANUFACTURING CORPORATION

From the garbage truck that picks up your trash to the farm equipment you see in an Iowa field, there's a good chance the components for this machinery came from Quality Manufacturing Corporation (QMC), a full-service fabricator in Urbandale.

"QMC isn't a dark, smoky shop where you step back in time," said Brent Creveling, controller. "This is advanced, 21st-century manufacturing."

As an original equipment manufacturer, QMC produces high-quality industrial and agricultural components as simple as a pin and as complex as a machine frame. "Everything is made right here

in Urbandale," said Adrian Stamper, director of business development. "One-stop shopping saves our customers time, money and hassle."

This family-owned company is also leading the trend of "reshoring," which is bringing skilled, well-paying manufacturing jobs back to Iowa and America. "We can make higher-quality parts at better prices than competitors with overseas operations," said Stamper, who noted that QMC runs production 24 hours a day. "As we've expanded our capabilities, we've expanded our customer base."

GROWING FOR THE FUTURE

QMC has tripled its team to serve customers who purchase components for sprayers, cement trucks, hay balers and more. While QMC had 140 employees nine years ago, the company now employs more than 450 people, including welders, painters, computer numerical control operators, mechanical engineers, industrial engineers, office support staff and other professionals.

QMC's Urbandale location makes it easy to recruit top talent from leading institutions like Iowa State University and Des Moines Area Community College. Many of the company's interns have become full-



Brent Creveling, Controller at Quality Manufacturing Corporation.

SPONSORED BY





Quality Manufacturing Corporation has been based in Urbandale since 1999.

time employees at QMC, where teamwork is key. "Accessibility is important," Creveling said. "Our engineers are tasked to be on the manufacturing floor assisting the production team, who take pride in creating high-quality parts with their hands."

Accessibility also defines Urbandale, where QMC has been based since 1999. The company moved to its current location from east Des Moines, where the business was founded in 1995. QMC has expanded in Urbandale into five different facilities, with almost 1 million square feet under roof. Urbandale's

prime location near Interstate Highways 80 and 35 makes it easy to receive supplies and ship finished products to customers nationwide, Stamper said.

QMC appreciates Urbandale city leaders' support as the company continues to grow. "They understand our goals and have been very accommodating," Creveling said. "This helps us do great work, take care of our customers and tackle new projects."

Q&A: CONNECTING PARKS, RECREATION AND ECON. DEV.

Jan Herke has been the City's parks and recreation director for 17 years. Read below for updates on Urbandale's parks, trails and why this matters to businesses.

» What's new with Urbandale's trail network?

Walnut Creek Regional Park spans 200 acres. It now features the Bob Layton trail, which connects the western suburbs to the rest of Urbandale, the Raccoon River trail, downtown and beyond. This trail link and the other 41 miles of trails in Urbandale add recreation opportunities for our patrons and also provide links to the metro area for residents to bike to work.

» Access to parks and trails affects quality of life; what's unique about Urbandale's park system?

Urbandale is unique because we developed a model of smaller neighborhood parks across

the city. Our goal is to provide all residents access to a park within a half-mile of their neighborhood. We have over 940 acres of parkland, 48 parks and 31 playgrounds. Parkland development will continue to expand as our community grows westward.

» What improvements are planned this year for the park system?

We have built a Central Iowa Trails Info Hub in Walker Johnston Park to align with the metro's goal of providing consistent signage along Central Iowa trails. The Info Hub includes trail maps of the region, an Urbandale map and showcases the history of Walker Johnston. We added a swings and slides play area in Walker Johnston Park, featuring a new custom slide that follows the contours of the hill. By October of this year, we anticipate the completion of the Jackaline and Paul Dunlap Arboretum, which is 12 acres in size, and includes a 4-acre mature arboretum.

» What's the connection between Parks & Recreation programming and local businesses in Urbandale?

We recognize the growing importance of recreational opportunities for business owners and their employees. People choose Urbandale for its great access to recreational opportunities, and we take that very seriously. Parks & Recreation programming and parks and trails and other amenities contribute to a high quality of life, which our residents and City staff expect. We want to give residents and local employees recreational opportunities during breaks and after hours by offering services and programming for all ages.



JAN HERKE
PARKS AND
RECREATION
DIRECTOR

SPONSORED BY



UPCOMING EVENTS

Please register to attend through www.uniquelyurbandale.com or by calling the Urbandale Chamber of Commerce at 515-331-6855. More information on each event may be found on the website.

JULY 23

genYP CEO Roundtable | Urbandale Chamber office, RODAN Board Room | 2830 100th St., Suite 110, Urbandale | 8:30 a.m. – 10:30 a.m. | Cost: Free to genYP members, \$10 for Urbandale Chamber members or \$25 general admission | RSVP requested.

JULY 28

AM Exchange | Triplett Office Essentials | 3553 109th St., Urbandale | 7:30 a.m. – 8:30 a.m. | Free to attend. RSVP requested.

AUGUST 1

Urbandale Dash | 5K fun run organized by genYP | 8 a.m. | Open to the public. | New this year is a kids run following the 5K. | Cost: \$25 pre-race, \$35 after July 30th until the day of the race. Team registration is available for \$20/team member. | To register go to www.getmeregistered.com/urbandale5kdash

AUGUST 13

High 5 networking event | Golden Openings | 2743 99th St., Urbandale | 4 p.m. – 6 p.m. | Free to attend. RSVP requested.

Hm Homemakers™
FURNITURE, MATTRESSES & ACCESSORIES

{life outdoors}

DREAM. CREATE. INSPIRE.

DID YOU KNOW...

We can provide you with a Design Consulting Service, inside or out?



Maximize your summer fun with a little help from Homemakers!



Homemakers.com
515-276-2772 • 1-888-818-7283
10215 Douglas Ave • Urbandale, IA 50322



VAN METER

MORE THAN FILLING ORDERS.

FULFILLING PROMISES.

Everything you need to succeed.
WWW.VANMETERINC.COM // 1-800-247-1410

AUTOMATION • UTILITY • LIGHTING • ELECTRICAL • ENERGY • DATA COMM

Enventis + Consolidated = COMMITMENT

Enventis is **NOW** Consolidated Communications

With our combined resources we will be a stronger company, offering you the latest technologies, services and increased value for your business.

Data & Internet | Voice | Cloud Services
Managed & Hosted Services | IT Services

844.YOUR.CCI
consolidated.com
Services not available in all areas

Consolidated®
communications
formerly Enventis

SPONSORED BY





THE BIG PICTURE



TOP LEFT: (L-R) Craig King, CBRE/Hubbell, Paul Rupprecht, R&R Realty Group, Dan Rupprecht, R&R Realty Group and Dave Harmeyer, Vista Real Estate at the Broker and Developer Appreciation Luncheon.

TOP RIGHT: (L-R) Mayor Robert Andeweg, Councilman Ron Pogge, Councilman Michael Carver and Greg Edwards, President/CEO of the Greater Des Moines Convention and Visitors Bureau attend the June State of the City luncheon.

LEFT: (L-R) Brenna Young, Park Place Catering, Dina Kahrmanovic, Quality Marble and Tile and Chandler Faldet, KCCI - TV 8 volunteering at the Urbandale Craft Beer and Food Fest.

RIGHT: genYP members connect with each other during a structured "speed networking" event held in June.



CHAMBER BUSINESS VALUE



Tiffany Menke
President, Urbandale Chamber of Commerce

(515) 331-6855
tmenke@urbandalechamber.com

"What would you do if you knew you couldn't fail?" ~ Anonymous

In June the Urbandale Chamber sponsored the Central Iowa Business & Leadership Conference featuring keynote speaker Mitch Matthews speaking on the topic of "DREAM. THINK. DO." Mitch was also our keynote speaker a few years ago for our Celebration of Business. I love his message. It is simple, but as he states can be hard to get started and simply give yourself permission to dream again. I challenge you to read Mitch's book and give yourself permission to dream. What would you do if you knew you couldn't fail? Hope to see you at an Urbandale Chamber event soon!

CITY OF URBANDALE

ECONOMIC DEVELOPMENT CONTACTS



AJ Johnson
City Manager

(515) 331-6705
ajohnson@urbandale.org



Katie Gieszler
Economic Development Specialist

(515) 331-6738
kgieszler@urbandale.org



Curtis Brown
Director of Economic Development

(515) 331-6756
cbrown@urbandale.org

SPONSORED BY



Return of the rats with antlers

The deer are back, and I need a BB gun. You know, an air rifle, the shoot-your-eye-out kind that Ralphie wanted in the "Christmas Story" movie.

Mind you, I haven't actually seen any deer recently, but the other day one left a signature deposit in my front yard. Also, something has been nibbling on the tops of my tomato plants, and we don't have 6-foot rabbits around here.

We used to have lots of deer, but I haven't actually seen any for a few years.

They come up from the Raccoon River, which is about a mile south. We live a couple of miles west of downtown in a South of Grand neighborhood that was developed in the early 1900s by people with names like Wallace, Cowles and Meredith.

Our house is one of the newer ones, built in the early 1950s. It's on 38th Place, which runs behind Greenwood School. When you get to where we live, it's barely more than an alley. Actually, it was an alley at one time, built to serve the back entrances of the mansions on 37th Street.

When we arrived in 1976, our house was classic Beaverdale-brick, one story with a brick veneer. We intended to stay a only few years and move to something larger once we started

a family. But by the time that happened, interest rates were through the roof and we couldn't afford anything bigger.

Because we loved the location, my father loaned us money and we added a second floor. Our lot is tiny compared with the properties on 37th Street, but those large yards make us feel like we're living in the middle of a park.

Our quarter-acre lot backs up to the side yard of a 4-acre property where Bishop Maurice Dingman once lived. In 1979, when Pope John Paul II visited Living History Farms, the Iowa National Guard set up a command center in the bishop's yard to plan logistics of the papal visit. It was great entertainment for my wife, who was home with our infant daughter.

Sometime in the 1990s, long after the Catholic Church sold the bishop's home, deer began to frequent the neighborhood. The first time I saw one, it had just snowed and a doe was nuzzling seed out of a bird feeder less than 10 feet from our back door.

The deer were cute for a while, until they began destroying the yard. They ate hostas and killed small trees by stripping the bark with their teeth. One spring, after the snow melted, my backyard looked like a feedlot with all the hoof prints and ground-in manure.

DAVE ELBERT

- Business Record columnist
- Email: daveelbert@bpcdm.com
- Phone: (515) 988-3787

© 2015 Business Record



"Rats with antlers" is the phrase several friends used to describe them.

One Saturday, I counted more than a dozen walking through the side yard where the bishop once lived.

It got so bad that the city eventually let hunters thin the herd.

The people who bought the bishop's home put up a chain-link fence to keep the deer out. The fence caused a stir, because it is totally inappropriate for the neighborhood.

We quit complaining, though, when we realized the fence was actually keeping the deer in their yard and out of ours.

Our home backs up to a small ravine, and the new owners built the fence on the lot line, which is on our side of the ravine.

That means our property is on the high side of the fence. Deer can easily jump out of our yard, and have done so. It's a much higher jump from the other side, and I've never seen a deer do that.

For years, that fence helped keep deer out of our yard.

But now they're back, and I need to get a BB gun so I can shoot trespassers in the butt. ■

"We quit complaining, though, when we realized the fence was actually keeping the deer in their yard and out of ours."

Your Small Business Advantage where you are more than just a number.

Specializing in Equipment, Operating and Real Estate Loans.



Contact Anne McKibben, VP & Market Manager, at 515-440-2265 or 515-577-5262 (cell)
6305 Mills Civic Pkwy Ste 3121, West Des Moines
USBIOWA.COM



YOUR BUSINESS. OUR INSURANCE EXPERTISE.

Jeremie Jordan

655 Walnut St., Suite 136

Des Moines, IA 50309

(515) 288-3004

jeremie.jordan@nationwide.com



Nationwide®



Products underwritten by Nationwide Mutual Insurance Company and Affiliated Companies. Home Office: Columbus, Ohio 43215. Subject to underwriting guidelines, review and approval. Products and discounts not available to all persons in all states. Nationwide, Nationwide Insurance and the Nationwide framemark are federally registered service marks of Nationwide Mutual Insurance Company. Copyright 2008 Nationwide Mutual Insurance Company. All rights reserved. ADP-2000 (9/08)



"Iowa-Des Moines Supply received our 'Vendor Excellence Certification' the last two years for their complete and accurate shipments, timely deliveries, correct invoicing, and general courtesies in meeting our packaging and janitorial needs."

RICHARD SCHLOERB
General Manager
Tension Envelope Corporation

IOWA-DES MOINES
SUPPLY, INC.
DISTRIBUTION SINCE 1937

You Deserve . . . We Deliver!

JANITORIAL • FOODSERVICE • CONSTRUCTION
PAPER • LODGING • PACKAGING
DISTRIBUTION

PHONE: (515) 263-1200 • www.iowadesmoinessupply.com

SALES

Value - the king of sales

Value is perhaps the most illusive concept in sales.

Everyone will tell you how important it is; very few can tell you what it is. I've already gone on ad nauseam about my distaste for the words "added value."

I recommend you leave them out of your sales lexicon forever. "Added value" has an evil twin — "value add" — neither of which can be defined in terms of what the customer actually benefits or profits from.

Added value is usually some minor service or hard-to-define extra that the customer already expects, or takes for granted anyway. Things like: same-day shipping, or online ordering, or parts in stock, 24-hour service — those are not VALUE — those are A GIVEN.

In order for you to understand the word "value" as it relates to your ability to make a sale, put the word "perceived" in front of it. If you think it's valuable, and your customer doesn't perceive it to be valuable, it ain't value.

Your customer is looking to increase THEIR sales, THEIR customer loyalty, THEIR employee loyalty, THEIR productivity, THEIR morale, THEIR profit, and to have no problems.

Are those the values you bring to the table? No? Why not? Those are the value elements that any customer would consider worthy of

the word. Your little add-on services are more of a bonus than a value.

The value is missing from the MISSION. Most companies have a meaningless mission statement that was created by a marketing department. It's all about being number one, exceeding customer expectations, and building shareholder value. Barf.

Where's the value to the customer? Isn't that the real mission?

What you need is a value proposition and a value statement that explains fully how you help others, how they win, how you serve in terms of the customer, and how that leads to loyal customers and referrals. And a mission statement that matches it.

A value proposition states what you do in terms of how a customer benefits. For example: You might say, "we provide four-hour service response." A "value proposition" way of stating the same thing is, "when equipment is broken or needs repair, production stops. That's why we instituted four-hour or less service response."

Same words, stated in terms of how the customer wins.

Value is important to a prospective customer for three reasons:

1. It differentiates you from the competition.

JEFFREY GITOMER

- Nationally syndicated columnist
- Email: salesman@gitomer.com
- Phone: (704) 333-1112

© 2015 Jeffrey H. Gitomer



2. It gives the customer understandable reasons to purchase.

3. It gives the customer the peace of mind they need to move forward, to buy.

Value is important to an existing customer for three reasons:

1. It builds real relationship, based on value.
2. It makes reorders more automatic and less bid-driven.

3. It eliminates competition. Most competitors thrive on "saving a customer money."

At the end of any sales transaction, or when an existing customer has a need, that's when "perception of value" plays its heaviest role. If the customer perceives a difference in you, and perceives a reassuring value in terms of how he wins, the sale is yours. If not, the sale goes to the person with the lowest price.

Lowest price always means lowest profit.

The more you become proficient at stating value in terms of the customer, the more it will be perceived as value by the customer. The more you put value in terms of how they they profit, the more it will be perceived as true value, or real value. And in the end, the value that you receive back will be the order.

That's value. ■

MARKETING

Making content part of the mix

Pick up any business magazine, read a marketing blog or attend a conference and you're going to get the message that you must have a content strategy. Truth be told, this is nothing new. There's always been a marketing strategy that emphasized the production of helpful tools/information that taught prospects something of value to earn their trust and a thought leadership position.

What is "new" today is that every company has the capacity to be a publisher and information portal via their own website, blog, social networking pages, etc. It used to be difficult and expensive to do and today, it's neither.

In fact, most companies already have the distribution channels (Facebook page, Twitter account, website, e-newsletter, etc.) in place. They just do a lousy job of using the tools at hand. For most businesses, these channels don't get very much attention and they either languish from lack of relevant content or even worse, they become a brag book for their own accomplishments, awards, clients won, etc. They're either dormant or so narcissistic that no one pays any attention, and really, who can blame them?

Before you can determine what kind of team or structure you'd need internally, you need to decide if you should even be creating

content (my bias is yes, but it's still a discussion that needs to be held) and if so — why? What are the business outcomes that are driving the decision? When done well, content marketing can drive qualified leads, shorten the sales cycle, generate new and repeat sales, reinforce a current client's buying decision and create PR opportunities, just to name a few outcomes.

Once you're clear about what you're trying to accomplish, you need to identify your audience for this effort.

To get that answer, you need to look to your company's personas and if you don't have any — create them. Personas are a powerful tool that helps drive every aspect of a marketing effort, from tone of voice to media to message.

When it comes to creating content with the goal of attracting your best prospects, it only stands to reason that you'd want a very detailed picture of who those prospects are. One of the reasons most companies blather on about themselves is because they have no idea who they're talking to. Once they get their personas very clear in their minds — planning the content becomes simple. And it's rarely narcissistic.

Now that you've identified why you're implementing a content marketing program and

DREW McLELLAN

- Top Dog at McLellan Marketing Group
- Blog: www.drewsmarketingminute.com
- Email: Drew@McLellanMarketing.com

© 2015 Drew McLellan



who you're targeting, the next step is to build your hub or the center of all of your efforts. This hub is the mother ship that all efforts lead back to, and it should reside on a platform the company has 100 percent control over. That means it is not Pinterest, Facebook, LinkedIn or any other third-party-owned site. It needs to exist on your own website or blog. It should be the container in which all of your original content is stored and offered up to visitors.

After the hub is established, the spokes can be added. A spoke is any activity or effort that drives people back to the hub. These will include both online and offline activities ranging from speaking at the Rotary meeting to offering your free ebook from your Facebook or Twitter platform.

Many companies start off strong. Enthusiasm is high and everyone's ready to contribute. But as client work piles on, it's easy to dismiss your internal efforts as optional. Deadlines start being overlooked and before you know it, you have cobwebs.

But there's a cure, and we'll dig into how to effectively create and maintain content flow in next week's column. ■



This week's QR code will take you to an article that will show you how to put the person into your personas.

Peoples Company Online Auction

Offering 18 different tracts throughout 11 different Iowa counties! Something for everyone with commercial buildings and sites, tillable farmland, recreational property with water features, single family building sites, and DSM Metro development ground.

Bidding is LIVE and will remain open until Thurs., July 30, 2015

Tracts 1-9 Close at 2:00 PM CDT

Tract 1 Listing #12659 – 3.29 Ac of commercial land & 7,500 Sq. Ft. steel building, Woodbury Co (Address is 4730 S. York Avenue Sioux City) Great end user bldg & site, re-development opportunity, or investment property. Zoned Business Park (BP) with all utilities to the site. Open House Dates: Thurs., July 9th 1:00–4:00 PM and Sun., July 19th 1:00 – 4:00 PM.

Tract 2 Listing #12660 – 0.78 Ac in Sioux Co, south of Hospers. CSR of 67 (CSR2 of 95). Sect 15 of Floyd Township.

Tract 3 Listing #12661 – 6.02 Ac in O'Brien Co, north of Sheldon. Approx 5 acres m/l farmland w/ CSR of 66.3 (CSR2 of 69.6). Sect 16 of Floyd Township.

Tract 4 Listing #12662 – 25.08 Ac in Osceola Co, E of Sibley. Large pond 10+ acres. Approx 7.5 acres w/ CSR of 79.9 (CSR2 of 96.2). Sect 17 of Holman Township.

Tract 5 Listing #12663 – 3.46 Ac in Osceola Co located just SE of Bigelow, MN (MN - IA border). Alfalfa w/ CSR of 73 (CSR2 of 88.5). Building site or farm. Sect 10 of Wilson Township.

Tract 6 Listing #12664 – 0.26 Ac single family bldg lot, Dickinson Co, Arnolds Park. Off Hwy 71 w/ frontage on S. Emerald Hills Dr. Zoned R1, Single Family.

Tract 7 Listing #12665 – 48.2 A, Sac Co, N of Early. Approx 41 acres m/l farmland w/CSR of 73.7 (CSR2 of 89.3). Good access to the property. Sect 3 of Boyer Township.

Tract 8 Listing #12666 – 27.34 Ac, Sac Co, N of Early. Approx 23.5 acres m/l farmland w/ CSR of 76.6 (CSR2 of 92.7). Access from Hwy 71. Sect 3 of Boyer Township.

Tract 9 Listing #12667 – 3.2 Ac in Calhoun Co, S of Jolley. Potential 100% tillable w/ CSR of 73.6 (CSR2 of 80.8). Sect 7 of Twin Lakes Township.

Tracts 10-18 Close at 4:00 PM CDT

Tract 10 Listing #12668 – 11.92 Ac in Calhoun Co, E of Knierim. Rec pond w/ 4.5+ acres of water. Approx 4.5 tillable acres m/l w/ CSR of 82.1 (CSR2 of 87.6). Sect 11 of Greeneld Township.

Tract 11 Listing #12669 – 1.82 Ac in Webster Co, N of Moorland. Potential 100% tillable w/ CSR of 82 (CSR2 of 88.8). Sect 11 of Greeneld Township. *No current access to the property.

Tract 12 Listing #12670 – 1.25 Ac of commercial land / buildings in Humboldt Co (Humboldt). Zoned General Commercial (B-2). Electric and water to the site, sewer needs to be extended.

Tract 13 Listing #12671 – 2.5 Ac of commercial land / buildings, Allamakee Co (Waukon). Zoned Industrial (M-1) with four bldgs (shop, garage, office.) All utilities are stubbed to the site. Open House Dates: Sun., June 28th 1:00 – 4:00 PM and Thurs., July 16th 1:00 – 4:00 PM.

Tract 14 Listing #12672 – 0.21 Ac Single Family bldg lot, Polk Co (902 & 908 31st Street Des Moines, Iowa). S of Drake Neighborhood. Zoned R1-60. Access from Crocker Street.

Tract 15 Listing #12673 – 6.66 Ac of commercial ground, Polk Co (Altoona). Great location near Interstate 80, Facebook Data Center, and Bass Pro Shop. Future zoning Mixed Use 2. 16" water main east side, other utilities need extended to property.

Tract 16 Listing #12674 – 2.44 Ac of commercial ground in Polk Co (Keo Way DSM). High traffic counts on Keo Way and close to Downtown. Zoned Multi-Family Res. (R-3) with possible commercial zoning. Utilities stubbed/available to site.

Tract 17 Listing #12675 – 0.17 Ac of commercial land, Polk Co (WDM). High growth area off Veterans Pkwy, N of Hwy 5. Microsoft Data Center, Great Western Bike Trail, & Willow Creek Golf Course. Future zoning Community Commercial (CMC).

Tract 18 Listing #12676 – 7.53 Ac of commercial land, Polk Co (WDM). Next door to Microsoft Data Center and Great Western Bike Trail. Sewer extends on SE side. Zoning of Community Commercial (CMC).

Matt Adams (515) 423.9235
Matt@PeoplesCompany.com

Travis Smock (319) 361.8089
Travis.Smock@PeoplesCompany.com

Andrew Zellmer (712) 898.5913
AndrewZ@PeoplesCompany.com

For more information on each individual tract and how to bid, visit PeoplesCompany.com or www.Peoples.Nextlot.com.



STANBROUGH
— REALTY —

FOR LEASE:



**5914 & 5942
Ashworth Rd,
WDM**

- 1,929 & 1,600 square feet available
- Priced at \$15 PSF NNN
- High visibility & plenty of parking
- Excellent west-side retail/office site
- At the lighted intersection of 60th St & Ashworth Rd
- Tenant improvement allowance offered

Jeffrey D. Stanbrough, CCIM, CPM
jeff@stanbroughrealty.com | 515.202.6649

www.stanbroughrealty.com

Follow
@BusinessRecord
on Twitter to stay on
the **leading edge**
of business.



The Science Center of Iowa's

ANNUAL FUNDRAISING EVENT & AUCTION

**August 28, 2015
6:30 PM – Midnight**

This year's SCI Annual Event celebrates humanity's fascination with space and the learning opportunities that come from the cosmos.

Special Guest: NASA Astronaut Clayton Anderson, retired

Tickets: \$125 | \$75 YP (ages 35 and younger)

Purchase tickets at sciowa.org/annualevent

Elemental Sponsors



Nationwide
is on your side



Premier Caterers



Event Media Partners

BusinessRecord



POLK COUNTY NOTICES

POLK COUNTY PUBLICATION BILL LIST	
TO BE PAID 7-7-2015	
VENDOR	AMOUNT
REASON: CAPITAL OUTLAYS	
CUSTOM MANUFACTURING, INC.	\$47,250.00 1
KARL CHEVROLET, INC.	\$55,941.38 2
OMG MIDWEST INC	\$1,724,829.96 1
REASON: CHGS FOR SVCS: NON-STAT.FEES	
BAUR, PHYLLIS	\$60.00 1
HAMMER, CLARA	\$60.00 1
REASON: FINES, FORFEITURES AND DEFLT.S.	
FREDERICK, CHARLES TYLOR	\$65.00 1
REASON: HUMAN SRVS PROV CHGS	
2555 WEDGEWOOD COOP	
HOUSING ASSOC	\$430.00 1
AB HOME IMPROVEMENT	\$23,039.20 4
ALL CITY SERVICES	\$2,374.00 6
AMC PLUMBING INC	\$1,700.00 2
APEX INSULATION AND CONSTRUCTION	\$10,103.00 2
BANK OF AMERICA	\$628.00 1
BARNES, MICHAEL	\$680.00 1
BEE LINE SEWER SERVICE LLC	\$665.00 2
BEST HEATING COOLING ELECTRIC INC	\$8,880.00 3
C-J COOPER UNLIMITED, INC.	\$402.81 1
CANDLERIDGE APARTMENTS	\$430.00 1
CENTENNIAL PLACE COOP HOUSING ASSOC	\$457.00 1
CITY OF DSM MUNICIPAL HOUSING AGENCY	\$725.00 1
CONNETT SERVICES	\$1,488.00 3
CRAIG PROPERTIES	\$963.00 2
CW CONSTRUCTION	\$8,470.80 3
DAHLM, GREG	\$430.00 1
DEER RIDGE 4 APARTMENTS	\$451.00 1
DES MOINES EAS GROUP LLC	\$430.00 1
DES MOINES HEATING COOLING LLC	\$3,673.40 1
DES MOINES WATER WORKS	\$541.68 4
DWB CONSTRUCTION LLC	\$10,849.83 2
FAMILY DISCOUNT	\$2,080.00 11
FEXSTEVE LIMITED COMPANY	\$1,685.00 1
FINE LIVING LLC	\$545.00 1
FOX, JOHN	\$430.00 1
GRAND COLONY APTS	\$323.00 1
GRAND VENTURES	\$533.00 1
GRIMES INVESTORS, L.P.	\$451.00 1
HERITAGE MECHANICAL COMPANY	\$2,900.00 2
HETHERSHAW, CHARLES	\$550.00 1
HILLCREST APT COMPLEX LLC	\$225.50 1
HY-VEE FOOD STORE #01138	\$168.35 5
HY-VEE FOOD STORE #1011	\$129.62 3
KILLEN, PAMELA	\$700.00 1
MARK GERALD NELSON LLC	\$430.00 1
MC CLISH 2 LLC	\$628.00 1
MC CLISH, MIKE	\$902.00 2
MIDAMERICAN ENERGY (GA'S ONLY)	\$2,240.77 9
NFM BUILDER SALES	\$569.00 1
NUVISION HOSPITALITY MANAGEMENT INC	\$408.75 4
OAKVIEW TERRACE LP	\$112.00 1
PACE ANALYTICAL SERVICES INC	\$25.00 1
PARKWINDS APARTMENTS	\$533.00 1
PINE GROVE MOBILE HOME PARK	\$700.00 1
PIONEER WOODS PARTNERSHIP	\$451.00 1
PRKG 523 LLC	\$1,286.00 3
R E L INSULATION	\$17,153.75 4
ROSE AVENUE RESIDENTIAL COOP	\$430.00 1
ROSEWOOD-KENWOOD APARTMENTS LLP	\$476.72 1
SHORT CONSTRUCTION	\$21,026.25 10
SIMON, SAM (GA'S ONLY)	\$451.00 1
SPRINGER PEST SOLUTIONS INC	\$1,400.00 1
SUTTON HILL RESIDENTIAL COOP	\$533.00 1
TAHER, INC.	\$20,220.39 1
TMG PROPERTIES LLC	\$600.00 1
VAL-VISTA/HILLOCK LLC	\$385.00 1
VAN ALST, MARK	\$266.50 1
VENBURY TRAIL APARTMENTS	\$1,328.00 2
WE CAN BUILD IT LLC	\$550.00 1
WESTWOOD RESIDENTIAL COOPERATIVE	\$451.00 1
WILLOW BEND I LP	\$533.00 1
WOODLAND WEST ASSOCIATES LP	\$595.00 1
REASON: INTERGOVERNMENTAL REVENUES	
KAUR, SANDEEP	\$18.75 1
REASON: LICENSES AND PERMITS	
SKYES, JOHN S	\$25.00 1
REASON: MENTAL HEALTH SVCS	
AMERICAN BAPTIST HOMES OF THE MIDWEST	\$5,280.48 1
GOODWILL INDUSTRIES OF DM	\$4,607.64 3
HARRINGTON, NATHAN	\$2,298.00 1
HASTINGS, GARTIN & BOETTGER LLP	\$70.00 1
HY-VEE FOOD STORE #01895	\$18.68 1
HY-VEE FOOD STORE #1022	\$19.38 1
MAINSTREAM LIVING INC.	\$4,197.80 2
MIDAMERICAN ENERGY (GA'S ONLY)	\$656.57 4
OLBERDING LAW OFFICE	\$54.00 1
ON WITH LIFE AT ANKENY	\$2,283.52 1
STRAWHACKER & ASSOCIATES LLC	\$19,620.72 8
TRANS IOWA, L.C.	\$11,696.52 3
VITA HEALTH SVCS RCF	\$7,452.00 1

REASON: MISCELLANEOUS	
IOWA DEPT OF PUBLIC SAFETY	\$2,685.00 1
KNOXVILLE POLICE DEPARTMENT	\$2,764.75 1
NEWTON POLICE DEPARTMENT	\$3,922.19 1
REASON: OTH SVCS & CHGS	
ABSOLUTE CONCRETE CONSTRUCTION INC	\$40,083.27 1
ADVANTAGE COMPANIES	\$1,062.23 1
ALTOONA PUBLIC LIBRARY	\$16,070.00 1
ANKENY KIRKENDALL PUBLIC	\$25,134.00 1
APPLEBY, TODD	\$29.10 2
ARTISTIC IRON WORKS	\$1,840.00 1
AT CONFERENCE INC	\$121.60 1
AT&T	\$162.52 1
BARRETT, BRENT DANA	\$48.00 1
BARURI, SARANGAPANI	\$64.98 1
BLACK HILLS ENERGY	\$245.40 5
BLANK PARK ZOO	\$260.00 1
BONDURANT COMMUNITY LIBRARY	\$5,493.00 1
BUSINESS PUBLICATIONS	\$590.94 1
CARLISLE PUBLIC LIBRARY	\$2,289.00 1
CARMAN, KRISTI K.	\$124.20 1
CARROLL, JAMES	\$2,000.00 1
CENTRAL IOWA JUVENILE DETENTION CENTER	\$51.89 1
CENTRAL IOWA REGIONAL	\$918.00 1
CENTRAL IOWA WATER ASSN	\$179.24 1
CENTURY LINK	\$3,736.22 4
CHEST, INFECTIOUS DISEASES & CLARKE ENVIRONMENTAL	\$155.00 1
MOSQUITO MGMT	\$41,025.44 1
CLIVE LIBRARY	\$1,220.00 1
COLLETTE, MICHELLE	\$413.00 1
COLTS MANUFACTURING COMPANY LLC	\$1,800.00 4
COPPER CREEK CINEMAS	\$672.00 2
CRAIG, STEVE	\$280.00 1
CRAWFORD, JAMES	\$11.50 1
DES MOINES AREA METROPOLITAN	\$22,443.00 1
DES MOINES PUBLIC LIBRARY	\$11,596.00 1
DES MOINES WATER WORKS	\$270.58 3
DIAM PEST CONTROL	\$55.00 1
EASTERN IOWA TIRE	\$36.75 1
ELECTRONIC ENGINEERING CO.	\$358.98 2
EMPHASYS	\$8,262.00 1
EVANS, ALEXANDRIA M.	\$37.95 1
EXCEL MECHANICAL CO., INC.	\$1,230.00 1
FAREWAY GROCERY STORE #983	\$9.98 1
FUNDING SOLUTIONS, INC.	\$5,208.33 1
GENERAL FIRE & SAFETY EQUIP.	\$1,130.00 2
GREATER ALTOONA COMMUNITY	\$281.75 1
GRIMES PUBLIC LIBRARY	\$6,487.00 1
GUIDE BY CELL INC	\$5,000.00 1
HALVORSON TRANE SERVICE (PO)	\$1,575.00 1
HD SUPPLY WHITE CAP CONSTRUCTION SUPPLY	\$4.60 1
HEALINGARTS, PLLC	\$1,050.00 1
HEALTHPORT	\$37.08 1
HOBART SALES AND SERVICE	\$65.00 1
HUBER, JERAD DUANE	\$32.25 1
IACCB CONFERENCE	\$390.00 1
IHLE, JOY M.	\$88.55 1
IMAGING TECHNOLOGIES	\$71.77 1
INFOMAX OFFICE SYSTEMS INC.	\$599.89 1
INSIGHT PUBLIC SECTOR	\$9,747.68 1
IOWA ASSOCIATION OF MUNICIPAL	\$1,368.78 1
IOWA CASA	\$3,446.00 1
IOWA COUNTY ENGINEERS ASSOC	\$60.00 1
IOWA DEPT OF PUBLIC HEALTH	\$60.00 1
IOWA ENVIRONMENTAL COUNCIL	\$50.00 1
IOWA LAW ENFORCEMENT ACADEMY	\$595.00 2
IOWA STATE UNIVERSITY	\$40.30 1
IOWA WATER MANAGEMENT	\$900.00 1
JIM'S JOHNS INC	\$125.00 1
JOHNSTON PUBLIC LIBRARY	\$18,623.00 1
KNUDSEN, SHANNON	\$1,350.00 1
KNUTSON, BECKY SUE	\$38.10 1
KONICA MINOLTA BUSINESS SOLUTIONS USA	\$(14,388.00) 1
KRAFT, DILLON (SHERIFF)	\$170.87 2
LAPPE, KRISTY	\$205.00 1
LAW ENFORCEMENT SEMINARS LLC	\$325.00 1
LINCOLN, DANIELLE	\$66.00 1
LUICK, AMANDA C.	\$62.10 1
MARASCO, FRANK	\$161.00 1
MATTHEWS, AARON JAMES	\$44.40 1
MAURO, FRANCIS PATRICK	\$32.25 1
MCCAIN, PATRICIA ANN	\$34.95 1
MERCY CLINICAL LAB	\$522.10 1
MERCY MEDICAL CENTER	\$30.00 1
MIDAMERICAN ENERGY	\$9,477.27 1
MITCHELLVILLE PUBLIC LIBRARY	\$1,520.00 1
MORGAN, CANDY	\$96.00 1
MORRIS AUTOMOTIVE INC	\$381.62 1
NATIONAL ENVIRONMENTAL HEALTH ASSOC	\$255.00 1
NEOPOST INC	\$277.20 1
NOAH, DAVID	\$32.70 1
O'HALLORAN INTERNATIONAL, INC.	\$237.52 1
OLSON, TREVA R	\$162.73 1
PATTERSON, PAMELA	\$192.63 1
PETERSEN-KEYS, PATRICE M.	\$11.69 1

PLEASANT HILL PUBLIC LIBRARY	\$7,084.00 1
POLK CITY COMMUNITY LIBRARY	\$1,643.00 1
PRATT, MAKELA MARIE	\$34.95 1
PREMIERE BOWLING AND ENTERTAINMENT	\$608.00 3
PTS OF AMERICA, LLC	\$300.00 1
RACOM CORPORATION	\$12,542.00 3
REASONER, MICHAEL J.	\$12.63 1
REICHENBACHER, DESIREE	\$250.00 2
RUNNELLS COMMUNITY LIBRARY	\$1,300.00 1
RUPP, TYLER WHITNEY	\$38.10 1
RUSSELL, MICHAEL CHRISTOPHER	\$40.80 1
RW EXCAVATING & DOZING	\$1,280.00 1
SARCONI, JAMES V	\$84.47 1
SAUSER, DAN	\$146.63 1
SCAGLIONE, MARY L.	\$54.05 1
SCHAEFER, MAUREEN	\$47.73 1
SCHNEIDER, ROBERT JOHN	\$32.25 1
SMILEY, SASHA MARIE	\$44.85 1
SMITH, KRISTIE ANN	\$44.85 1
SNYDER & ASSOCIATES INC.	\$8,926.08 3
STILL, BECKY	\$350.00 1
STONE CREEK HOTEL & CONFERENCE CENTER	\$3,507.84 2
TIM VORLAND PHOTOGRAPHY LLC	\$50.00 1
TRAN, SEAN PATRICK	\$38.10 1
TRANS IOWA, L.C.	\$1,299.90 1
U.S. CELLULAR	\$162.18 2
URBANDALE PUBLIC LIBRARY	\$1,541.00 1
VAN WALL EQUIPMENT, INC.	\$118.71 1
VERIZON WIRELESS	\$9,799.85 2
VULGAMOTT, BRYCE ALAN	\$39.45 1
WAL-MART COMMUNITY BRC	\$53.42 1
WEISS, RYK	\$1,089.00 1
WILLIAMS, AMBER	\$900.00 1
WINCHESTER, DAVID	\$120.00 2
WORTHINGTON, ELANE K	\$32.25 1
REASON: PERSONAL SERVICES	
ARNDT, DANIEL (PUB WORKS)	\$833.31 1
CSC	\$200.18 1
IOWA HEART CENTER	\$59.50 1
KNAPP, KIMBERLY (YOUTH SHELTER)	\$548.54 1
MCKINNEY, HEATHER A	\$137.60 1
MOORE, BRADLEY W.	\$402.00 1
NEMMERS, PATSY	\$618.53 1
PHILLIPS, RYAN J.	\$705.41 1
REGENERATIVE MEDICINE OF IOWA	\$250.00 1
RODGERS, ADAM M	\$865.96 1
TIBBEN, JIMMY J. M.	\$772.09 1
WALKER, DAWN M.	\$1,141.23 1
REASON: SUPPLIES	
ADVENTURE LIGHTING	\$839.42 3
AIR FILTER SALES SERVICES INC	\$1,045.20 3
AMERICAN MARKING, INC.	\$42.32 3
APPLEBY, TODD	\$100.00 1
CAPITAL SANITARY SUPPLY CO.INC	\$654.25 1
CARQUEST AUTO PARTS	\$258.19 3
CASSIDY TECHNOLOGIES	\$100.00 1
CHARLES GABUS FORD	\$39.62 2
CITY SUPPLY CORP	\$267.86 2
COMMERCIAL BAG & SUPPLY CO. INC.	\$952.50 1
COMPETITIVE EDGE	\$456.02 1
CONTECH ENGINEERED SOLUTIONS INC	\$5,797.41 2
CUSTOM AWARDS & EMBROIDERY INC	\$65.00 1
DRESS, JIM (PUB WORKS)	\$79.49 1
ED M. FELD COMPANY	\$636.00 1
EXCEL/PAY-LESS OFFICE PRODUCTS (PO)	\$2,025.00 3
FARM & CITY SUPPLY	\$141.85 2
FIRESTONE COMPLETE AUTO CARE	\$121.99 2
FRITO LAY, INC	\$1,750.98 2
GRAINGER	\$479.81 3
H. B. LEISEROWITZ COMPANY	\$139.00 1
HD SUPPLY WHITE CAP CONSTRUCTION SUPPLY	\$20.75 1
HYDRO-KLEAN	\$3,160.65 3
INSIGHT PUBLIC SECTOR	\$363.96 1
IOWA WATER MANAGEMENT	\$570.00 1
KECK OIL, INC.	\$2,889.88 1
KEMPKER'S TRUE VALUE	\$37.68 1
KNUTSON, ZACHARIA M.	\$100.00 1
LOFFREDO FRESH PRODUCE CO INC	\$157.26 1
LOGAN CONTRACTORS SUPPLY INC	\$932.77 3
LOWE'S	\$51.27 1
MANATTS, INC.	\$2,688.00 2
MARTIN MARIETTA AGGREGATES	\$5,232.91 2
MENARDS-ALTOONA	\$158.01 5
MENARDS-ANKENY	\$133.98 4
MENARDS-CLIVE	\$178.95 3
MENARDS-DES MOINES	\$185.21 3
MIDWEST CRYOGENICS	\$112.50 1
MIDWEST WHEEL COMPANIES	\$14.22 1
MILLER HARDWARE, INC.	\$21.48 2
NAPA AUTO PARTS	\$108.33 4
NEKOLA, BRETT (PUB WORKS)	\$100.00 1
NELSON, RANDY (PUB WORKS)	\$100.00 1
O'HALLORAN INTERNATIONAL, INC.	\$428.69 1
OMG MIDWEST INC	\$200,080.65 1
OWEN, ROB (PUB WORKS)	\$100.00 1
P & P SMALL ENGINES INC.	\$430.88 2
QUALITY STRIPING INC	\$210,950.44 1
RACOM CORPORATION	\$449.20 1
SCHAEFER, CAROLYN	\$24.97 1

SCHMUNK, GREGORY A.	\$41.93 1
SECURITY LOCKSMITHS	\$45.39 3
SHERWIN WILLIAMS CO	\$98.13 1
SINK PAPER COMPANY	\$872.85 1
STAR EQUIPMENT	\$250.73 2
STRAUSS SECURITY SOLUTIONS	\$60.00 1
TOMPKINS INDUSTRIES, INC.	\$2.86 1
TOWER COMPANY, INC.	\$171.00 1
UNITED REFRIGERATION, INC	\$68.68 1
US FOODS	\$14.54 1
VAN METER INDUSTRIAL INC	\$125.09 1
VAN WALL EQUIPMENT, INC.	\$77.40 2
ZIEGLER INC	\$697.98 3
IOWA EVENTS CENTER	
REASON: MISCELLANEOUS	
DES MOINES BLAZE	\$200.00
NORWALK MUSIC BOOSTERS	\$151.92
REASON: OTHER SERVICES & CHARGES	
ATLANTIC COCA COLA	\$201.00
IOWA BEVERAGE	\$4,114.45
BEVERAGE DISTRIBUTORS	\$352.08
POLK COUNTY EMPLOYEE INSURANCE	
TO BE PAID 7-7-2015	
REASON: OTHER SERVICES & CHARGES	
WELLMARK	\$276,865.10
PRINCIPAL FINANCIAL	\$7,989.40
PRINCIPAL FINANCIAL	\$7,612.84

OFFICIAL PUBLICATION
PROCEEDINGS OF THE POLK COUNTY
BOARD OF SUPERVISORS

The Polk County Board of Supervisors met in regular session Tuesday, June 30, 2015 at 9:30 a.m.

MEMBERS PRESENT: Steve Van Oort, Robert Brownell, Tom Hockensmith, John F. Mauro, Angela Connolly.

LET THE RECORD SHOW Supervisor Connolly is out of the county and her physical presence was impossible. She will be participating in the meeting by telephone, which is allowed per Iowa Code Chapter 21.8 and her votes will be recorded.

Moved by Mauro, Seconded by Brownell to dispense with the reading of the June 23, 2015 minutes and they stand approved as printed. The June 24, 2015 discussion meeting minutes were also approved.

VOTE YEA: Van Oort, Brownell, Mauro, Connolly, Hockensmith.

The Bills as certified by the County Auditor were allowed or disallowed on each according to the certified list, claim numbers 201506300001 – 20150630820.

VOTE YEA: Van Oort, Brownell, Mauro, Connolly, Hockensmith.

PERMITS: Application for Iowa Retail Cigarette/Tobacco/Nicotine/Vapor Permits for the following:

Jester Park Golf Club, 11949 NW 118th Ave, Granger

Outer Limits, 6560 NE 14th Street

QuikTrip #538, 4575 NW 2nd Street

Quik Trip #562, 4801 NE 14th Street

Shop N Save, 4685 NW 2nd Street

Toad Valley Golf Course, 237 NE 80th, Pleasant Hill

VOTE YEA: Van Oort, Brownell, Connolly, Hockensmith.

PASS: Mauro.

RESOLUTIONS: Resolution approving contract amendments with various mental health providers (Candee, ChildServe, Goodwill Industries, H.O.P.E., Link Associates, Mainstream Living, Primary Health Care and Stepping Stone Family Services).

Resolution approving amendments for Judicial Mental Health Advocate Services (Yeggy, Michael, Briggs).

Resolution authorizing the Auditor's Office to publish Notice of Public Hearing for July 14, 2015 on Disposal of County Interest in Real Estate (vacant property beside 1425 E. 13th Street).

Resolution authorizing the Auditor's Office to publish Notice of Public Hearing for July 14, 2015 on Disposal of County Interest in Real Estate (1411 College Avenue).

Resolution authorizing the Auditor's Office to publish Notice of Public Hearing for July 14, 2015 on Disposal of County Interest in Real Estate (1408 – 2nd Place).

Resolution establishing a No Parking zone on both sides of portions of NE 44th Avenue and NE 26th Street.

Resolution approving grant agreement with the Kresge Foundation.

Resolution approving release of mortgage on 3912 Pleasant Street (Richman).

Resolution approving release of mortgage on 1524 – 45th Street (Young).

Resolution approving release of mortgage

POLK COUNTY NOTICES

on 1438 – 34th Street (Calhoun).
Resolution approving release of mortgage on 1308 Stewart Street (Meeks).
Resolution approving release of mortgage on 1145 – 18th Street (Ortiz).
Resolution authorizing the Auditor’s Office to publish Notice of Public Hearing regarding five year lease agreement with Bridges of Iowa, Inc.
Resolution modifying position within the Health Department.
Resolution authorizing continued use of ACH process for payment of health, dental and flexible spending account claims.
Resolution authorizing the Polk County Auditor to issue manual checks.
Resolution authorizing the creation or deletion of funds within Polk County’s chart of accounts during FY 15/16.
Resolution authorizing FY 14/15 year end transfers.
Resolution authorizing FY 15/16 transfers.
Resolution authorizing the use of interfund loan pools for FY 15/16.
Resolution appropriating FY 15/16 budget as certified.
Resolution approving agreement with 208 Restaurant and Bar, LLC (d/b/a RoCA) to operate a sidewalk café (in front of 200 Court Avenue).
Resolution approving Letter of Agreement with Iowa Legal Aid.
Resolution approving Community Development Grant to Aging Resources of Central Iowa.
Resolution approving Community Development Grant to Des Moines Area Community College Foundation.
Resolution approving Community Betterment Grant awards.
REC’D & FILED: Notice that the Board of Supervisors will convene as a Canvassing Board on July 7, 2015 to canvass votes cast for the Saydel Special School Election held June 30, 2015.
REFERRED TO PUBLIC WKS & CO ATTORNEY: Corrected notice of hearing from City of Ankeny regarding annexation of property owned by Steven, Mary and Joseph Bernier.
APPOINTMENTS: Moved by Mauro, Seconded by Brownell that the following Resolution be adopted: BE IT FURTHER RESOLVED that the individuals named on this Memorandum be approved for personnel action:
Richard Hickie, Security Officer part-time, BOS, \$20.79 beginning July 3, 2015
Terry Nielsen, Security Officer on-call, BOS, \$20.79 beginning June 23, 2015
Apajok Wal, Yth Svcs Wkr part-time, CFYS, \$21.75 beginning July 1, 2015
VOTE YEA: Van Oort, Brownell, Connolly, Mauro, Hockensmith.
*Memorandum of Annual Salaries for authorized positions for FY 15/16.
LET THE RECORD SHOW all resolutions, including Public Hearings, were approved unanimously, unless otherwise noted.
Moved by Mauro, Seconded by Van Oort to adjourn until July 7, 2015 at 9:30 a.m.

POLK COUNTY FULL-TIME EMPLOYEES JULY 1, 2015		
DEPARTMENT/EMPLOYEE NAME	TOTAL SALARY	COM, FAMILY & YOUTH SVCS
AGU, ABRAHAM C.	\$59,392	
ALANIZ, ERIC	\$49,131	
ALLEN, ANGELA M.	\$46,932	
ALONZO-DIAZ, MARIA E.	\$71,523	
APPLEBY, TODD	\$39,194	
AXMAN, ALAN D.	\$59,392	
BAILEY, MATTHEW P.	\$59,392	
BANKS, KIMBERLY M.	\$44,573	
BARATTA, SARA MARIE	\$47,196	
BARRETT, REES EARL	\$45,405	
BASH, BRENDA SUE	\$85,020	
BATES-CROWE, SHELLY JO	\$56,712	
BENDIXEN, PEGGY S.	\$44,537	
BENSHOOF, DIXON A.	\$77,377	
BEST, ALISON J.	\$59,392	
BLACKFORD, TYREL W.	\$58,608	
BLOCKER, JEFFREY L.	\$68,278	
BOYER, BRIAN E.	\$136,859	
BROWN, ARICKA N.	\$58,608	
BROWN, DAIYNNNA M.	\$56,712	
BUCHANAN, CHRISTINA M.	\$59,392	
BUCK, WILLIAM	\$37,686	
BURKETT, HERKISHA R.	\$46,646	
BURNS, DANNY J.	\$59,392	
CARMAN, KRISTI K.	\$60,292	
CATALDO, MARY L.	\$38,966	
CHAPLINE, JAMES G	\$46,314	
COCKERHAM, NICOLE D.	\$47,196	

COX, MARY CLARE	\$63,610
DANIELS, SHERILL L.	\$43,100
DAVIS, ASHLEY L.	\$55,972
DAVIS, ROBERT G.	\$39,192
DEVINE, BETTY M.	\$118,569
DOPHEIDE, TRAVIS	\$49,130
EVANS, ALEXANDRIA M.	\$38,425
EVANS, CHRISTINA M.	\$68,278
EVANS, JOSHUA J.	\$53,466
EXLINE, KRISTIN L.	\$47,196
FACHMAN, DAVID J	\$56,712
FORRESTER, SALLY L.	\$61,373
FOSTER, KATREENA K.	\$59,392
FREILINGER, SARAH A	\$68,278
FULLER, KELLEN D.	\$56,108
GAZZO, MARYJO L	\$65,170
GILMORE, TAMARA L.	\$71,523
GRIEME, KENDALL	\$61,186
HACHMANN, TODD A.	\$68,278
HAGEDORN, JAY D.	\$59,392
HANSEN, ERIC R.	\$77,377
HANSEN, ERIN R.	\$70,517
HELDENBRAND, LISA M.	\$71,523
HELM, ROCHELLE G.	\$65,170
HENDERSON, JERMAIN J.	\$53,466
HOOD, THOMAS M.	\$59,392
HOYT, TONI M.	\$65,170
HUBBARTT, JASON L	\$71,166
HUEBNER, CONNIE P	\$43,100
HULEN, SARA E.	\$67,327
IHLE, ALAN J.	\$59,392
IHLE, JOY M.	\$91,389
JACKSON, CARY	\$39,411
JACOB, KATHRYN A.	\$68,278
JARRETT, MINDY S	\$59,392
JONES, JENNIFER E	\$49,405
KEUNING, JARED R.	\$59,392
KIRKMAN, GRACY N.	\$56,712
KNAPP, KIMBERLY K.	\$47,196
KNOX, SHERYL D.	\$71,523
LARKINS, VEVA D	\$59,392
LARSON, AMY L.	\$70,517
LARSON, DANIEL DALE	\$84,495
LEDGER, NICOLLE L.	\$59,392
LEDVINA, NICOLE M.	\$47,196
LEGGETT, TY M.	\$59,392
LEHRMAN, COURTNEY J	\$59,392
LEVERETTE, PATRICIA Y.	\$59,392
LINDBLOOM, ROBERT J.	\$65,170
LONG, JANEL R.	\$64,124
MACK, SARAH M.	\$59,392
MAIERS, MICHAEL J.	\$47,196
MASON, LINDA L.	\$41,973
MCCARGAR, HOLLIE M.	\$40,912
MCCAUGHEY, KRISTI K.	\$47,196
MCCROREY, SAMUEL M.	\$64,124
MCGOUGH, CONSTANCE S.	\$74,951
MCMILLAN, SARA E.	\$71,523
MCVEY, JODY L.	\$68,278
MEHRL, RANDY A	\$59,392
MEINECKE, MARK F.	\$65,170
MELLERUP, GRANT E.	\$47,441
METZGER, WILLIAM B.	\$43,100
MIRANDA, DALILA L.	\$68,278
MOORE, CESARE A.	\$77,377
MORANO, LORNA A.	\$49,405
MORRIS, EDWIN E.	\$59,392
MOTRONI, JOSEPH R.	\$59,392
MURRELL, LILLIE J.	\$49,405
NEREM, RANAE I.	\$60,580
OLSON, SARA L	\$59,392
OLSON, TREVA R	\$49,405
PATTERSON, PAMELA S.	\$49,405
PORTER, SAMUEL A.	\$72,963
PRALL, JILL K.	\$68,278
QUIJANO, DONALD F.	\$59,392
RADONCIC, NUSRET	\$47,531
RAMSEY, TIMOTHY M.	\$47,196
REECE, ELIZABETH ANNE	\$49,405
REINHARDT, JOHN C.	\$68,278
RHOADS, TONY S.	\$89,156
RICH, ANDREW J.	\$59,392
RILEY, KRISTEN E.	\$46,646
RIVERS, KERRI L.	\$68,278
ROBINSON, ROBIN	\$59,392
ROHLK, SARA R.	\$58,608
ROLLINS, ANTHONY M	\$46,314
ROSS, TERRENCE J.	\$47,239
SAUSER, DANIEL L.	\$64,124
SAVAGE, DIANA L.	\$64,124
SCIONE, RAY ANN	\$46,646
SHORE, RUSTY L.	\$49,405
SIMONSON, KRYSYAL ANN	\$44,573
SMALLEY, JENNA	\$45,405
SMITH, JAMES V.	\$58,833
SOLINGER, MYNDI L.	\$70,427
STEVENS, JAIME L.	\$56,712
STEVENSON, CAROLE J.	\$47,196
STODGEL, DOUGLAS A.	\$85,294
STODGEL, PAULETTE A.	\$67,194
STRADLEY, BOBBIE R.	\$49,405
THOMPSON, JOSEPH R	\$77,377

TOOTILL, BETH M.	\$59,392
TRAVE, KELLY A.	\$47,196
TRIMBLE DIRKS, JODI	\$74,951
TRIPP, MARY ELLEN	\$59,392
TURNER, BRYAN L.	\$49,405
ULMER, LINDA	\$37,687
WARD, BREANNE D.	\$56,712
WASKEL, SHANNON L.	\$49,405
WEBB, JOYCE L.	\$76,906
WEBB, THERESA L.	\$47,196
WELDON, SCOTT A.	\$73,813
WOMBLE, DANIEL A.	\$65,170
CONSERVATION	
ANDERSON, HEIDI L.	\$67,194
BOYLES, JOEL E.	\$67,194
BRUSCHER, DEAN C.	\$73,813
CARLSON, CAROL ANN	\$77,377
CARMONEY-DAVIS, SHELLIE D	\$45,873
CLINGAN, CHRISTOPHER L	\$54,950
DOTZLER, JAMES J.	\$61,187
DUNGAN, MARK A	\$81,094
FEZZELL, BERNARD C.	\$73,813
FINCH, CHARLES R.	\$70,427
FORESMAN-KIRPES, LORI M.	\$67,194
FREEMAN, KELSEY A.	\$32,402
HAEFNER, STEVE L.	\$73,813
HALBERSMA, GARY E	\$66,177
HARSHBARGER, LUCAS S	\$63,337
HERRSTROM, BRIAN E.	\$70,427
HRUBES, DANIEL R.	\$61,187
JOHNSON, CLARKE W	\$70,907
JOHNSON, WAYNE M.	\$85,020
KRUM, TANNER J	\$46,647
LENTZ, CYNTHIA L.	\$70,427
LENTZ, GEORGE M.	\$77,377
LEOPOLD, RICHARD A	\$119,602
LOWN, LOREN E.	\$84,495
LUNAN, CHRIS E.	\$61,187
MAAK, TRAVIS J	\$46,647
MAJOR, LEWIS A.	\$67,194
MALCOMSON, VIRGINIA	\$46,008
MANNING, STAN T	\$67,194
MULLEN, LELA J	\$56,863
NAEVE, TYLER J.	\$61,187
NEAL, LAEL D.	\$52,499
PASKER, ALAN W.	\$61,187
PATRICK, CHANCE R.	\$60,292
PETERSEN-KEYS, PATRICE M.	\$77,377
RANKIN, KAMI D	\$77,377
RITTER, MELISSA K.	\$53,210
ROMIG, DOUGLAS C	\$89,672
SHEELEY, DOUGLAS G.	\$63,797
SPAIN, PATRICK F.	\$64,124
WEARS, TIMOTHY V.	\$61,187
YOUNG, KENNETH H.	\$70,427
COUNTY ATTORNEY	
ALAVI, ELIZABETH L.	\$51,251
ALDRICH, DIANE J.	\$62,217
ALLEN, JUSTIN G	\$125,709
ALLIE, SUSAN MARIE	\$56,712
ALVAREZ, DEANA K.	\$56,712
ANANIA, DOMINIC L	\$73,092
ANDERSON, JON ERIC	\$125,709
ANDERSON, KAYLA N.	\$53,997
ARCHER, SHANNON K.	\$94,023
BALLARD, DONALD R.	\$70,517
BANEY, REBECCA S	\$56,712
BARKER, KAYSE L	\$48,482
BARSETTI, KATHY J.	\$47,196
BAYENS, STEPHAN K.	\$125,709
BELL, KEVIN J	\$82,499
BENCE, LAURIE J.	\$61,373
BIRD, SARAH J.	\$62,217
BRIGGLE, DEANNA C.	\$56,712
BROWN, STEPHANIE E.	\$125,709
BROWNELL, KEVIN J.	\$114,184
BRUMMOND, TROY R	\$68,278
CARTER, MEGAN	\$45,127
COX, STEPHANIE L	\$125,709
CRAIG, LAURIE A	\$36,948
CRISP, JOSEPH D	\$102,667
CRUZ, ROBERTA G	\$51,097
CURRY, MAURICE	\$80,586
DAWSON, RANDY L.	\$64,762
DESIO, THOMAS A.	\$125,709
DEWITZ, CATHERINE L.	\$62,217
DIBLASI, ROBERT T.	\$125,709
DOWNEY, JEANINE A.	\$62,217
FAGEN, ALISHA S.	\$46,953
FENTON-CLATT, BARBARA J	\$59,392
FLAHERTY, DANIEL L.	\$125,709
FORTANO, STEVEN M.	\$156,995
GLENN, ANGELA M.	\$62,217
GLOSHEN, BRAEDI J	\$48,482
GOGERTY, CELENE M	\$125,709
GONZALEZ, CHRISTINA	\$125,709
GREEN, DIANNE L.	\$56,712
GREINER, BRENDAN E.	\$108,427
HATHAWAY, JAMES T.	\$80,586
HATHAWAY, KEVIN D.	\$88,259
HENRY, JESSICA L	\$73,092
HERVEY, KYLIE J	\$34,475

HIBBARD, DAVID W	\$125,709
HICK, PAULA J.	\$59,392
HOBART, DOUGLAS D.	\$64,762
HORVAT, NAN M	\$156,995
HOUSTON, PAUL D	\$98,014
HOWE, ROBIN J.	\$56,712
HUNTER, MICHAEL T.	\$125,709
HURLEY, KATE N	\$43,391
JENKINS, FAYE P.	\$125,709
JOHANSEN, JOHN R.	\$78,552
JOHNSON, AMANDA	\$76,747
JONES, MARK S.	\$62,217
KUHLE, ROGER J.	\$156,995
LANE, LINDA	\$76,747
LEE, MARISSA E	\$44,260
LEONARD, DEBRA E.	\$113,055
LIVINGSTON, JAKI L.	\$125,709
LUCAS, BRET J.	\$125,709
LUMLEY, MELANIE R.	\$61,928
MAINE, CORY E	\$56,712
MARASCO JR, RALPH E.	\$137,274
MCVAY, TAYLOR A	\$34,475
MORGAN, CANDY S.	\$125,709
MORRIS, LINDSAY D.	\$62,217
MULLENBERG, NANCY KAYE	\$62,217
MUNDELL, JEFFREY M.	\$55,972
MUNDELL, TERI ANN	\$89,156
MUNOZ, MISTY D.	\$58,608
NAYLOR, JULIANNE M.	\$43,100
NOBLE, JEFFREY K.	\$156,995
O'BRIEN, KATHERINE M.	\$62,217
PATRICK, KEVIN	\$76,747
PEAK, MEGAN M.	\$59,392
PETERSEN, ROXANNE C.	\$81,094
PETROVICH, ANDREA M.	\$105,547
PORTER, DAVID M.	\$119,948
RADOSEVICH, RANDI L.	\$70,427
RAMIREZ, LINDA J.	\$47,196
REMALLY, JUSTIN M.	\$68,278
RIVERA, AMBER N	\$73,092
ROGERS, BARI L	\$37,687
ROLING, JORDAN A.	\$80,586
SALAMI, OLUBUNMI A.	\$125,709
SALVNER, MICHAEL A.	\$125,709
SANDON, MARK J.	\$125,709
SARCONI, JOHN P.	\$184,700
SCHUHARDT, JOSHUA L	\$49,452
SEVERINO, FRANK S.	\$156,995
SULENTIC, KAILYN	\$73,092
TAYLOR, ANNETTE D.	\$125,709
TAYLOR, MARK H.	\$125,709
THOMPSON, JOSEPH T.	\$61,373
THORN, BONNIE M.	\$56,712
TROWER, KELSEY	\$51,076
VERHEUL, CHARLES F.	\$62,217
VITZTHUM HIESTERMAN, ANDREA S.	\$125,709
VOOGT, DANIEL C.	\$156,995
WARD, JAMES P.	\$125,709
WHEELER, PAMELA R.	\$51,410
WILLIAMS, BEVERLY C.	\$62,217
WILLIAMS, BRETT A.	\$78,552
WILSON, CHELSEY M.	\$58,608
ZANDERS, LINDA K.	\$125,709
ZIMMERMAN, ERICA	\$45,145
COUNTY AUDITOR	
AGEY, KENNETH J.	\$113,055
ALBERS, MICHAEL	\$116,732
ALEXANDER, KAYLEY	\$49,452
ALTHAUS, KARL	\$40,988
AMADEO, MARK R.	\$49,405
BENTLEY, JODINE SUE	\$56,138
BIGELOW, JO ELLEN	\$102,787
BISIGNANO, EMILY R.	\$49,405
BOYSEN, ERIC R.	\$71,523
BURKE, JESSICA	\$58,608
CAMPBELL, CHERI	\$56,712
CARTER, GINA R.	\$81,094
CHIODO, JOHN R.	\$118,569
CONRAD, PETER E.	\$40,988
CUNNINGHAM, KRISTIE L.	\$54,156
CUNNINGHAM, STEVEN A.	\$107,796
DEWEY, REBECCA A.	\$97,756
EASTERDAY, DIANE S	\$93,469
FITZGERALD, JAMES AA	\$107,597
GATTO, CHRISTINA M	\$44,590
GREEN, JENNIFER	\$37,687
HAGAN, SUSAN J.	\$47,196
HARKEN, JAMES D	\$83,724
HEROLD, ALISON P.	\$62,408
HOSIER, DEANA L.	\$64,124
HUNTER, SIENNA J.	\$39,194
JOHNSON, JEAN C.	\$40,989
LAFRENZ, RYAN C.	\$87,712
LAMBERTI, ROD L.	\$43,100
LEMMO, TONY A.	\$93,996
MARASCO, DARREN J.	\$87,712
MAURO, STEVEN M.	\$93,996
MCMAINS, KIMBERLY A.	\$37,881
MOODY, ROSEMARY V.	\$93,996
MORLAN, ROBERT BRIAN	\$93,996
OLSON, KEITH W.	\$136,859
PIETAN, JACKIE L.	\$64,124

POLK COUNTY NOTICES

POST-ALTHAUS, BARBARA	\$65,170
REICH, DONNA	\$39,194
RODDA, JEFFREY W.	\$68,278
SCHWARTZ, HERBERT J.	\$81,094
SCUPIEN, JORDAN J	\$54,206
SICKERSON, DARREN J.	\$81,094
SPAUR, MELISSA A.	\$57,552
STEEVE, SUE L.	\$77,377
STEGER, LINDSAY R.	\$61,186
TAYLOR, MARY E.	\$56,712
WEBSTER, DEBORAH A.	\$56,712
WIEDERAENDERS, CARL R.	\$99,870
WIELAND, CINDY L.	\$68,278

CO BOARD OF SUPERVISORS

ANDERSON, DEBORAH A.	\$124,386
BOESE, SARAH M.	\$81,095
BROWNELL, ROBERT D.	\$107,076
CATALDO JR, FRANK A.	\$107,796
CHRISTENSEN, KELSIE R.	\$54,081
CONNOLLY, ANGELA R.	\$107,076
DORHOUT, CINDY C.	\$64,124
HICKS, MERLE J.	\$89,156
HOCKENSMITH, WILLIAM T.	\$107,076
KSIAZEK, HEATHER	\$60,292
MAURO, JOHN F.	\$107,076
MOODY-TUNKS, LISA MARIE	\$102,787
MORTON, MICHELLE M.	\$76,175
POOLE, SHELLEY G.	\$77,377
VAN OORT, STEVEN D.	\$107,076
WANDRO, MARK F	\$194,840
YEGGY, KELLY A.	\$71,861

COUNTY RECORDER

AHRENS, JESSE L.	\$56,712
ALBRIGHT-ANDREW, NANCY M.	\$85,661
ASHER, CHARLES E.	\$49,405
BATTANI, CHRISTINE K.	\$49,405
BROGAN, THOMAS C.	\$77,377
CLEEREMAN, CONSTANCE L.	\$49,405
CONNOLLY, JASON T.	\$85,661
CORT, JAMIE M	\$40,988
DEANGELIS, ROBERT V.	\$39,411
HAGGERTY, JULIE M	\$107,076
HALL, STEPHANIE K.	\$49,405
HENMAN, JANE LOUISE	\$49,405
HILL, JORDYN M	\$38,638
HOUSTON, ROSE M.	\$46,646
HOWARD, JUDY ANN	\$44,573
KAUFMAN, ANNA F.	\$48,810
KNIGHT, DEBRA L.	\$54,156
LOPEZ, ROSA P	\$49,405
MASON, VALERIA J	\$91,015
MOBERG, BRI A.	\$46,646
MOON, JILL A.	\$85,661
SPOONER, SHELBY	\$40,989
THORNBURG, MARY LOU	\$54,156
UMTHUN, PATRICIA L.	\$85,661
WEISER, GEORGINA M.	\$49,405
WILLIS, KELSEY A.	\$42,753

COUNTY SHERIFF

ABENS, DARREN PATRICK	\$67,505
ABENS, JANA C	\$92,073
ADAMOVICZ, PATRICK J.	\$67,505
ADAMOVICZ, STEVEN W.	\$61,368
AHRENS, JUSTIN	\$61,368
AIKEN, JAMIE	\$43,560
AKKERMAN, JULIE D	\$64,124
ALBRIGHT, JESSAMYN	\$43,916
ALONZO, JOSUE D.	\$38,638
ALTES, BENJAMIN L.	\$93,469
AMADEO, TRICIA J.	\$61,368
ANDERSON, BRIAN R.	\$67,505
ARCURI, CHRISTIE M.	\$67,505
ARENDS, WILLIAM A.	\$77,377
ARMSTRONG, THOMAS M.	\$59,513
ASHER, ERIC M.	\$51,720
AVON, JAMES D.	\$43,915
BACCAM, CHRIS V.	\$60,462
BACH, BRANDON W	\$40,798
BACH, BRYAN	\$40,798
BADGER, PEGGY JO	\$58,391
BALLARD, DEBRA KAY	\$61,146
BALLARD, TYLER J.	\$44,573
BALLENGER, STEVEN K.	\$67,505
BANE, JUSTIN C.	\$60,462
BARBER, TREVOR M.	\$73,536
BARNHOUSE, ANGELA L.	\$61,368
BARRY, SHAWN D.	\$77,377
BARTHOLOMEW, ROBYN N.	\$70,819
BATTANI, KATHY ANNE	\$56,712
BATTANI, RHONDA K.	\$59,513
BELL, TRAVIS J	\$61,368
BIGGART, JUSTIN C.	\$40,807
BISIGNANO, ALLISON K.	\$56,140
BLAYLOCK, RICHARD M.	\$87,689
BLAYLOCK, RILEY	\$42,342
BOGLE, CHRISTOPHER S	\$40,908
BOHLEN, STACI M.	\$48,294
BOLLMAN, CASS LEE	\$70,880
BOLTEN, MICHAEL G.	\$48,810
BONTA, JUSTIN EVERTT	\$61,368
BOS, NATHAN R.	\$59,513
BOUCHER, DAVID R.	\$61,368

BOUCHER, SCOTT A.	\$61,368
BOUNMA, SOMBATH D.	\$44,130
BRACELIN, BRANDON M.	\$73,537
BRACELIN, MATTHEW J	\$43,932
BRADLEY, JOSEPH L.	\$59,513
BRAGG, JANICE S.	\$67,505
BRANT, JUSTIN D.	\$59,513
BRECKENRIDGE, JEFFREY R.	\$60,462
BROCKMAN, NICHOLAS M.	\$77,377
BRODEUR, CHRISTOPHER A.	\$60,462
BRODEUR, MAGGIE S.	\$61,368
BRODEUR, NICHOLAS D	\$39,610
BROWN, ALIA J.	\$59,513
BROWN, ANNE E.	\$43,915
BROWN, JAMES A	\$40,798
BROWN, JAMES BRYANT	\$98,142
BROWN, RYAN	\$43,560
BROWN, STEVEN	\$42,342
BROWN, TRAVERS MW	\$36,223
BUCK, ELIJAH R	\$40,204
BUELTEL, GARY J.	\$61,368
BURKHART, JONATHAN D.	\$60,462
BURLEY, MARTIN A.	\$61,368
BURNETT, ROBERT D.	\$67,505
BURNS, CHAD A.	\$59,513
BURT, CARL E.	\$46,646
BUSHONG, MICHAEL B.	\$59,513
CALLAHAN JR, ROGER P.	\$61,368
CALLAHAN, KENNETH L.	\$61,273
CAMPANICO, FILIPE	\$37,881
CASEY, DOUGLAS P.	\$44,573
CASKEY, MICHAEL E.	\$59,513
CASKEY, MICHAEL JEFFREY	\$73,003
CASSADY, VALERIE A.	\$59,513
CASTRO JR, RAFAEL A.	\$59,513
CHAMBERS, CHARITY K.	\$61,368
CHANCE, MARK RICHARD	\$70,819
CHAPMAN, BRANDON C.	\$59,513
CHARLESTON, DANIEL W.	\$85,020
CHIA OATTS, CASSIE A.	\$51,720
CHRISTIANSEN, KEITH A.	\$61,368
CLARK, BRITTANY J.	\$43,932
CLARK, MARY R.	\$58,391
CLARK, NICHOLAS B.	\$61,368
CLARK, NICOLE M	\$45,428
CLARK, RACHELE L.	\$59,513
CLARK-SCHUH, LINDSAY	\$46,951
CLARY, ZACHARY S.	\$60,462
CLAY, MELANIE A.	\$49,405
CLINE, TROY C.	\$54,156
COLE, SHANE R.	\$61,368
COLLINS, LYNETTE A.	\$76,175
COLVIN, JARED	\$40,762
COOK, TARA D.	\$85,020
COPIC, CHRISTOPHER M.	\$44,213
CORBIN, NICHOLAS W.	\$44,459
CORREA, CARLOS A	\$40,798
CORY, IAN	\$43,560
COUCH, ANGELA S.	\$61,368
COURTNEY, EDWARD P.	\$61,368
COURTNEY, FRANK L.	\$67,505
COURTNEY, STEVEN C.	\$84,495
COUSINS, RYAN D	\$43,560
CRONIN, JUSTIN E	\$40,807
CURRY, GERALD M.	\$59,513
DAGENAIS, AUSTIN	\$43,560
DARLAND, DAWN M.	\$49,405
DAUTOVIC, MEVLID	\$60,669
DAVIS, AARON E.	\$61,368
DAVIS, JASON L.	\$64,364
DECKARD, REX A.	\$40,798
DEVINE, MELANIE J.	\$77,377
DOUGLAS, CHRISTOPHER M.	\$67,505
DROTTZ, BRUCE A.	\$61,368
DROTTZ, DEBBY SUE	\$70,427
DUNAGAN, ROCKY W.	\$49,405
DUNTON, DUSTIN W.	\$60,462
DUONG, MAYEL	\$46,646
EDWARDS, CHARLES D.	\$59,513
EDWARDS, JESSICA S.	\$61,368
EMPTY, ANTHONY C.	\$60,462
ERICKSON, NATHAN A.	\$50,644
EVANS, RYAN D.	\$70,880
FERLITTSCH, ANTHONY J.	\$67,505
FERRELL, JACOB D.	\$46,053
FESSLER-BOYLAN, ABBIE N	\$40,908
FIELD, CAMERON W.	\$61,368
FIELD, KENNETH S.	\$61,368
FLINN, WILLIAM J.	\$61,368
FLOYD, COURTNEY L.	\$51,251
FOREST, BENJAMIN W	\$67,505
FORGET, WENDY M.	\$46,646
FOSTER, JEFFREY G.	\$61,368
FOUSEK, JOSEPH	\$42,226
FRANKFORD, TRAVIS N	\$40,204
FRASER, BETTY JO	\$61,368
FRATTO-FARRELL, COLE	\$39,194
FREERKSEN, ASHLEY	\$42,226
FRITZ, JAMES C.	\$72,308
FUDGE, AMY L.	\$49,405
FUNARO, JEFFREY J.	\$67,505
GALETICH, TODD M.	\$67,505

GAMBLIN, LARRY W.	\$43,143
GARDINO, KSENIA V.	\$53,629
GASPAR, WILLIAM A.	\$70,819
GEIKEN, JEROMY D.	\$61,368
GEORGE, DAVID M.	\$77,377
GEORGE, TIFFANY M.	\$43,915
GHEE, KEVIN E	\$67,505
GILLETTE, BRANDON L.	\$61,368
GLENN, DOUGLAS ROBERT	\$43,560
GRAU, SHERI R.	\$57,969
GRAY, DAVID P	\$67,505
GREEN, HOLLIE	\$40,908
GREENFIELD, RYAN L.	\$60,462
GREGO, SHANE A.	\$67,505
GREGORY, NATHAN A.	\$77,377
GRIFFITHS, THOMAS E.	\$70,819
GRIMM, DANIEL R.	\$102,068
GRIMM, DEBRA A.	\$51,875
GRIMM, MARCI L.	\$70,427
GUESSFORD, TODD A.	\$61,368
GUNDERSON, DUSTIN B.	\$42,226
GURDA, MERZUDIN	\$40,798
GURWELL, NICHOLAS P.	\$59,513
HAAN II, CARL J.	\$70,819
HACKETT, DAMION	\$40,798
HAHN, NATHAN D.	\$59,513
HAKE, MICHAEL A.	\$67,505
HALSTED, MARK L.	\$61,368
HANIG, KALEM L.	\$59,513
HANSEN, ANTHONY R.	\$67,505
HANSEN, CRAIG A.	\$61,368
HANSON, KENNETH W.	\$77,377
HARBAN JR, CHRIS E.	\$61,368
HARLESS, JOSEPH J.	\$64,437
HARPER, BONITA J.	\$49,405
HARRIS, JOHN W.	\$44,876
HARRISON, JACOB	\$40,807
HART, LEE L.	\$98,014
HAVLOVIC, MATTHEW	\$42,226
HEAPS, DUSTIN C.	\$60,462
HECKLER, THOMAS C.	\$46,053
HEDGECOCK SR, JACOB C.	\$70,880
HEMPING, LUTRICIA A.	\$47,196
HENSLEY, CONNIE S.	\$61,368
HERNANDEZ, JUDAH J.	\$59,513
HERNDON, JASON D.	\$61,368
HIDY, ANGELA L.	\$61,368
HILL, RYAN R.	\$61,368
HINRICHS, JEFFREY D.	\$70,880
HODOVIC, NIHAD	\$67,505
HOFFMAN, TODD A.	\$77,377
HOLLIDAY, JEFFREY A.	\$67,505
HOLT, AMOS L.	\$68,497
HOOK, BRADLEY	\$43,560
HOPPER, TIMOTHY M	\$70,819
HOUGHAM, RENEE	\$49,405
HOUSTON, SCOTT R.	\$61,368
HOUSTON, STEVEN W.	\$67,505
HUGHES, BRETT	\$40,798
HUMMEL, ALEX S.	\$60,462
HUNT, ANDREW F.	\$67,505
HUTCHISON, DELANA L.	\$44,573
JACKSON, WADE C.	\$60,966
JACQUIN, JAIME R	\$59,513
JACQUIN, JOSHUA T.	\$66,592
JOHNS, BRIAN J.	\$67,505
JOHNSON, RAGENIA L.	\$61,368
JOHNSON, SUSAN M.	\$77,377
JONES, CHRISTOPHER M.	\$43,916
JONES, DELROY	\$61,368
KEEGAN, PEGGY A.	\$61,368
KEITER, FRANK M.	\$46,646
KEITH, JANELLE L.	\$59,513
KELLEY, MARCHELE L.	\$50,763
KENNEDY, JEFFREY D.	\$47,196
KILLAM, DEVON C.	\$61,368
KIM, DAVID Y.	\$48,294
KING, BRUCE R.	\$60,462
KING, WILLIAM R.	\$65,170
KINNEY, PHILIP J.	\$67,505
KINNEY, TAMMY J.	\$59,513
KINNING, KYLE J	\$38,638
KNIGHT, MARTIN A.	\$60,462
KNOX, DAVID F.	\$59,513
KOKEMULLER, ROY R.	\$59,513
KOPF, BRIAN R.	\$61,368
KRAFT, DILLON T.	\$98,014
KRUM, TIMOTHY JAMES	\$122,281
KYLE, MICHAEL J.	\$59,513
LAPPE, DENNIS W.	\$67,505
LARSEN, NICHOLAS A.	\$59,513
LARSON, KELLY J.	\$70,819
LAWS, JACK G.	\$43,915
LAWYER, CAITLIN M	\$40,204
LEDoux, JOSHUA P	\$40,908
LESTER, DENISE R.	\$46,646
LEWELLIN, LARRY R	\$67,505
LEYDENS, KIM Y.	\$59,513
LINDSEY, TODD A	\$61,368
LITTLE, STEVEN R.	\$98,142
LOFFREDO, SARA B.	\$39,411
LONEY, SANDRA L.	\$59,392

LONG, BRENT DAVID	\$113,110
LOSE, JANET J.	\$49,405
LOSEE, MATT S	\$43,932
LOZANO, BRENT A	\$61,368
LUKENBILL, PEGGY M	\$49,405
LUMLEY, TRENTON D.	\$70,708
MAEN, JASON A.	\$59,513
MAHLSTADT, MICHELLE A.	\$61,368
MALLAR, ANDREW L.	\$60,669
MALONE, TAYLOR W. J.	\$59,513
MARASCO, FRANK	\$122,281
MART, CHRISTOPHER M.	\$49,405
MATZDORFF, WILLIAM L.	\$73,537
MCCARTHY, ANTHONY J.	\$61,186
MCCARTHEY, WILLIAM M.	\$152,851
MCDANIEL, JAMIE L.	\$61,368
MCDOLE, KATHY	\$67,505
MCFARLAND, DAVID J.	\$59,513
MCILHON, PATRICK R.	\$46,497
MEASE, JAMES D	\$40,204
MERTENS, MATTHEW	\$89,156
METZGER, MARCUS R	\$40,798
MICHAEL, KELLY RAE	\$76,906
MILANI, FRANK J.	\$59,513
MILLER, DOUGLAS C.	\$89,271
MILLER, DOUGLAS E.	\$67,505
MILLER, JAMES M.	\$59,513
MOHR, MARK C.	\$67,505
MONTAVON, CHALENA L.	\$40,762
MONTHEI, RYAN A.	\$59,513
MOORE, BRADLEY W.	\$49,405
MORGAN, MARK D.	\$59,513
MORTON, TAMI M.	\$81,094
MUELL, DANIELLE N.	\$60,462
MUNOZ JR, VICTOR J	\$129,923
MUNOZ, KATHRYN JO	\$67,505
MUNSON, HALEIGH	\$43,560
MURILLO, JACOB A	\$43,560
MUSGRAVE, SHANNON M.	\$66,507
NAGGAR, AYAL M.	\$61,368
NAMANNY, ANDREW G.	\$59,513
NASH, TIFFANY L.	\$43,915
NEBEL, JAY F.	\$61,368
NEGRETE, JOHN	\$70,819
NEGRETE, SETH J.	\$40,989
NELSON, ALEXANDER J	\$39,610
NELSON, JEFF L.	\$60,462
NELSON, JORDAN D.	\$59,513
NGUYEN, THIEN V.	\$48,294
NOBLE, JERRY E.	\$56,712
NORMAN-RYAN, SHERYL L.	\$49,405
NUCARO, COSIMO J.	\$48,810
OBANOVIC, KARINA I.	\$59,513
O'BRIEN, ELIZABETH A.	\$67,505
ONLEY, KEITH A	\$70,708
OSBERG, HEATH B.	\$67,505
OWEN, ANGELA M.	\$70,971
PAGE, JACK D.	\$67,505
PALMER, TYLER N.	\$46,053
PALMER, VICTORIA E.	\$85,020
PARCEL JR, MICHAEL D	\$61,368
PARIS, DOLORES	\$51,720
PARKS, JOHN R	\$67,505
PAUL, MATTHEW GEORGE	\$67,505
PAULSEN, BAILEY	\$38,638
PEDERSON, STEPHANIE J.	\$70,819
PENA, RODOLPO	\$67,505
PERKINS, STEPHEN D.	\$61,368
PERRY, HILARY C.	\$61,368
PETERS, JASON W.	\$61,368
PHILLIPS, RYAN J.	\$53,121
PIERCE, ANDREW	\$43,560
PIERCE, KAREN S.	\$56,712
PIERCE, MATTHEW D.	\$61,368
PIKE, BOBBIE J.	\$61,368
PILCH, KENNETH A.	\$89,271
PION, CURTIS R.	\$101,384
POHLMAN, JOHN R.	\$53,121
POPE, ANDREW T.	\$43,915
POWELL, GLENDA M.	\$59,513
PRINE, BRANDON M.	\$59,513
PURSCCELL, JOSEPH A	\$67,505
PURSLEY, BEVERLY L.	\$67,505
RABON, JORDAN P.	\$46,053
RAMIREZ, MARIO E.A.	\$42,226
RAMSEY, MATTHEW A.	\$46,646
RAMSEY, ROBERT R.	\$53,466
REASONER, MICHAEL J.	\$73,129
REESE, BRIAN J.	\$48,294
REHOR, CRAIG S.	\$89,156
REZNIK, FERENC	\$81,245
RICHARDS, AMANDA J.	\$61,368
RICHARDS, CODY J.	\$61,368
RICHARDS, RONALD D.	\$91,991
RICHMOND, BRANDON P.	\$60,462
RIVERA, GABRIEL	\$46,053
RODGERS, ADAM M	\$67,505
RODISH, RANDALL C.	\$61,368
ROGERS JR, LEONARD	\$61,368
ROGERS, KYNSIE MARIE	\$61,368
ROMP, KEITH ALAN	\$87,689
RULLMAN, JEFFREY B.	\$73,536

POLK COUNTY NOTICES

RUSSO, MARK A.	\$98,142	WONG, CHONG P.	\$67,505	FAUSER, MARYMARGARET H.	\$57,969	SLATER, SCOTT T.	\$105,305
SADLER, JASON G.	\$60,669	WONG, TOM P.	\$61,368	FIELDS, WILLIAM J.	\$42,610	STOLTE, JOELLE M.	\$79,524
SARCONÉ, JAMES V	\$70,974	WOODSON, STEVEN C	\$61,368	FILIPPELLI SR, PAUL J.	\$56,712	STONE, DIANE C.	\$56,712
SARMSFIELD, SCOTT A.	\$61,368	XAYAVONG, JAMIE L.	\$64,437	FLINN, WILLIAM L	\$56,712	SWEENEY, PATRICK JOHN	\$78,552
SCAMMAHORN, DRAGANA	\$43,915	YORK, MATTHEW L.	\$44,876	FOOTE, DENNIS D.	\$89,156	UHLE, ROBERT A.	\$64,273
SCAVO, TRISHA L.	\$61,368	YOUNG, MICHAEL J.	\$59,513	FULITANO, JOSEPH D.	\$56,712	WILLIAMS, LOUANNE SUE	\$55,972
SCHAEER, BRIAN T.	\$59,513	YOUNG-JUNCKER, JOLENE L.	\$60,462	GILES, PAMELA J.	\$62,217	HUMAN RESOURCES	
SCHAEFFER, NOLAN	\$39,610	ZEBEDEE, MATTHEW J	\$39,610	GOMEZ, ROBERTO J.	\$42,610	CAMPBELL, MICHAEL W	\$118,569
SCHMITZ, CALEB M.	\$61,368	COUNTY TREASURER		GOWDY, VINCE E.	\$65,170	COPLEY, TODD J.	\$65,170
SCHNEIDER, KEVIN J.	\$122,281	BALDON, JENNIFER	\$44,869	GULICK, TOPPER	\$38,966	EVANS, MARIA D.	\$96,556
SCHNUR, MATTHEW J.	\$60,669	BIONDI, STACY M.	\$42,297	HAMM II, JAMES R.	\$43,100	NAHAS, JAMES G	\$103,778
SCHOEPPNER, MICHAEL J.	\$60,462	BLANKENFELD, PAMELA S.	\$70,427	HARKEN, THOMAS E.	\$43,100	SPARGUR, JAIBRE D.	\$54,912
SCHUTTE, ROBERT	\$43,560	BLASBERG, MELINDA	\$49,130	HARVEY, SHARI L.	\$70,427	STEIN, THOMAS M.	\$70,693
SCOTT, CRAIG J.	\$64,280	BOATTENHAMER, KELSEY	\$43,143	HAYES, KAREN K.	\$43,100	STEVENSON, GAIL D	\$92,097
SELBY, DARRIN L	\$67,505	BOUNMA, KARI D.	\$51,297	HELLER, MICHAEL A	\$33,799	VEACH, PAMELA SUE	\$107,796
SELLE, WAYNE A.	\$59,513	BRAUER, THERESA J	\$33,136	HERMAN, MICHAEL A.	\$56,712	INFORMATION TECHNOLOGY	
SHAFFER, ERIC A	\$43,932	BROWN, MELISSA D.	\$55,972	HERSELIUS, GEOFFREY A	\$56,712	ALLISON, MICHAEL E.	\$56,712
SHEETS, CAMERON	\$40,798	CALUZZI, CATHY L.	\$54,156	HODGES II, LARRY E.	\$68,278	ANDERSON, AMI K	\$101,383
SHELLEY, SCOT M.	\$61,368	COATES, DAVID K	\$54,156	HUTCHINS, RICHARD T.	\$93,469	BARURI, SARANGAPANI	\$117,713
SHEPLEY, GALEN L.	\$61,368	COGLEY, GLENDA M.	\$70,427	JACKSON, DINO L.	\$43,100	BETTIS, LISA A.	\$61,187
SHIBER, STEPHEN D.	\$61,368	COHAN, JENNY T.	\$62,217	JOHNSON, SHARON R.	\$43,100	BRIGHTMAN, JOANNA L.	\$93,469
SHIELDS, LUCAS S.	\$59,513	CUTLER, CHRISTOPHER C.	\$46,664	JOHNSON, WILLIAM A.	\$68,278	CHIHAK, MICHAEL J.	\$107,796
SHREFFLER, HIEU D.	\$59,513	DAVIDSON, ASHLEY R.	\$54,156	JORDAN, GARY L.	\$56,145	CHRISTOFIS, JAMES	\$85,052
SICKELS, RUSSELL J.	\$59,513	DENHAM, LARAE S.	\$54,156	KILLIP, JOHN T.	\$87,876	CRAWFORD, JAMES	\$58,412
SILVER, CHRISTOPHER R.	\$70,708	DUNKIN, APRIL P.	\$54,156	KORSHUN, DOUGLAS	\$68,278	HORMAN, SCOTT A.	\$118,569
SIMON III, JOSEPH P	\$122,281	EMBREY, JACQUELINE D.	\$48,810	LEONETTI JR, PETER J.	\$53,819	JEFFERSON, ANTHONY W.	\$143,569
SLIGER, JOSEPH W	\$40,798	FAZIO, REBECCA L.	\$56,712	LEWIS, VAUGHN E	\$43,100	KELLY, NICOLE D.	\$107,796
SMITH, JOHN BRADLEY	\$81,094	FORBES, MELISA D.	\$91,457	LITTLE, MELVIN P.	\$43,100	KIEL, RONALD J.	\$70,427
SMITH, JONATHAN	\$39,610	FRANCHETTI, LYNNNE M	\$54,156	LUNA SR, ANTONIO L.	\$56,712	KOENCK, KURTIS L.	\$98,014
SMITH, JULIET M	\$37,687	GJERSVIK, JODI L.	\$91,457	MACNEIR, DONNA J.	\$89,156	KOTHUR, SARIKA	\$85,053
SMITH, MARLA R.	\$59,513	GRIFFIN, MARY E.	\$54,156	MARASCO, CERI J.	\$60,292	LEVENHAGEN, CHAD W	\$72,393
SMITH, MARTIN R.	\$59,513	GRUBER, SHIRLEY D.	\$54,156	MENNEN, NICHOLAS	\$33,136	MILLER, JEFFREY K.	\$73,813
SMITH, NICHOLAS J	\$43,560	GUHL, CHRISTOPHER W.	\$54,156	MILLER, DENNIS R.	\$58,608	MURDOCK, MICHAEL	\$73,840
SMITH, NICOLE M.	\$49,405	HAGEDORN, RACHAEL S.	\$70,427	MONDS, OWEN	\$33,136	NALLURI, LAKSHMI	\$61,658
SMITH, SHANE R.	\$72,306	HAMILTON, EILEEN E.	\$51,076	MORGAN, DANIELLE N.	\$56,615	OCHICHE, ANTHONY U.	\$96,556
SNOOK, MICHAEL A.	\$59,513	HESTER, MELISSA M.	\$54,156	NEKOLA, KIMBERLY M	\$33,799	PEDDY, KAY E.	\$107,796
SOSA CHAVEZ, EVELYN L	\$43,126	HOFFMAN, LYNN M.	\$54,156	NORMAN, TANNER A	\$34,475	PFEFFER, JOSEPH E.	\$102,787
SPAIN, SANDRA L.	\$62,217	HOUSBY, PAULA K	\$43,100	O'DONNELL, JOHN	\$34,475	RADKAY, DANIEL R.	\$88,422
SPAIN, STEPHEN L.	\$67,505	HOVELAND, RAQUEL E.	\$54,156	O'DONNELL, JORDAN M	\$33,799	RUSSELL, RODNEY A.	\$93,469
SPARKS, WILLIAM P.	\$61,368	HUBER, JEANIE A.	\$54,156	PARTON, MICHAEL N	\$43,100	SAMPICA, JAMES	\$81,751
SQUIRE, NANCY R.	\$69,769	JACKSON, ANGELA	\$54,156	PEACOCK, TANNER	\$33,799	TROTTER, CHRISTOPHER L.	\$98,014
STANLEY, JAMES M.	\$60,462	JOHANNSEN, RITA L.	\$54,156	PRICE, TRICIA E.	\$42,610	VANCE, MICHAEL B.	\$93,469
STANTON II, ROBERT L	\$98,142	KAILI, KAREN M.	\$54,156	RAGLAND, CALVIN L.	\$47,196	VENG-PEDERSEN, DAVID P	\$64,149
STAPES, JONATHON D.	\$60,462	KANE, ANDREW	\$61,658	RILEY, DANIEL D.	\$68,278	WARDEN, ANTHONY J.	\$93,469
STARKEY, SARAH M.	\$59,513	KEARNEY, KELLY	\$43,143	RIPLEY JR, CHARLES H.	\$68,278	WIGGINS, CHERYL A.	\$102,787
STECH, BRENT W.	\$46,053	LACEY, BENJAMIN W.	\$122,570	ROBINSON, KRISTEN D.	\$51,720	WILCOX, JUSTIN	\$75,288
STEVENS, BRADLEY D.	\$67,505	LAPCHESKE, CYNTHIA FORBES	\$59,392	ROGERS, MICHELE M.	\$42,610	WILLIAMS, ALETHEA J.	\$113,055
STEVENS, MICHAEL L.	\$85,020	LAWARENCE, REBECCA S.	\$67,327	ROWEN, JOHN N.	\$129,497	ZENOR, ANDREA R	\$45,428
STEWART, JENNIFER K.	\$37,687	LEHMAN, CASANDRA K.	\$54,156	SANDERS, JAMES R.	\$45,254	MEDICAL EXAMINER	
STEWART, TERRY L.	\$44,573	LEWIS, DONALD J	\$77,976	SANDERS, KEVIN M.	\$58,391	CARTER, JOHN	\$57,138
STEWART-ROWEN, KRISTEN	\$40,183	MAHNKE, MARY E.	\$70,427	SCAGLIONE, ANTHONY J.	\$45,127	DIXON, CHRISTINA N	\$59,392
STOFER, MICHAEL L.	\$43,560	MALONEY, MARY P.	\$107,597	SEVERINO, JAMES M	\$34,475	LAGODZINSKI, ALEX L.	\$64,532
STONE, JEREMY S.	\$67,505	MCMAINS, JACOB J	\$38,638	SCLAUSON, RUSSELL F.	\$56,712	LUICK, AMANDA C.	\$91,392
STRASSER, MARJORIE A.	\$47,196	MEADE, KATHRYN JO	\$43,100	SMITH, PATRICIA E.	\$43,100	RAUSCH, MEGAN C.	\$67,327
SUMMERS, JENNIFER L.	\$36,948	MURPHY, LINDA A.	\$54,156	SMITH, WADE ALLEN	\$53,466	SCHMUNK, GREGORY A.	\$238,689
SUTER, ADAM DEAN	\$61,368	PHELPS, KELLIE J.	\$91,457	STAMPER, TYRELL	\$51,720	WALKER, DAWN M.	\$51,076
SWANSON, ELIZABETH A.	\$64,832	PIKE, CHRISTINA M	\$54,156	STEINBACH, JEREMY M.	\$43,100	WILLIAMSON, AMY J.	\$67,327
SWEARNGIN, CORY A.	\$59,513	PITMAN, DOUGLAS F.	\$70,427	STEINBACH, MICHAEL M.	\$56,712	PUBLIC WORKS	
TARR, GREGORY A.	\$59,513	PLAISANCE, ADELE M.	\$54,156	STIFEL, THOMAS B.	\$56,712	ANDERSON, BRIAN M.	\$64,273
TART, JASON R.	\$61,273	RICE, KYLE J.	\$84,058	SUMMY, RANDY C	\$62,217	APPLEBY, JAMES A.	\$93,469
TARVIN, BLAKE	\$44,213	RICHARDSON, JESSICA A.	\$54,156	TANCRETI, DAVID	\$68,278	ARNDT, DANIEL J.	\$62,217
TARVIN, MICHAEL L.	\$73,536	ROCK, WILLIAM S	\$41,468	TYLER, JOHN M.	\$79,835	BACON, BRIAN K.	\$68,278
TAYLOR, JOHN RUSSELL	\$92,842	ROSE, GAYLE L.	\$54,156	VALGOI, ROY J.	\$93,469	BAILEY, KURT DOUGLAS	\$136,859
TAYLOR, TRAVIS	\$39,610	SMITH, SARAH M.	\$93,469	VANDUONG, KAY	\$43,100	BANKS, RANDY L.	\$61,373
TAYLOR, TREVOR	\$60,462	SODA, DEBORAH R.	\$56,712	WADLE, EDWIN MICHAEL	\$56,712	BATTANI, DANIEL P.	\$68,278
TAZZIOLI, LINDSEY	\$42,342	SOLBERG, PATRICIA A.	\$47,065	WELBOURN, GREGORY LEE	\$68,278	BECKER, JEREMY R.	\$118,569
TEW, MARY E.	\$67,505	SWEARNGIN, ELAINE M.	\$64,124	WELBOURN, KIMBERLY S.	\$64,273	BECKWITH, KASIN L.	\$68,428
THORSON, MELISSA R	\$40,798	UTTER, BONNIE J.	\$49,405	WHITLOW, LORETTA L.	\$33,799	BENSHOOF, DANIEL J.	\$62,217
TIBBEN, JIMMY J. M.	\$59,513	VAUGHAN, MICHELLE L.	\$56,712	WINDERS, JILL M.	\$37,385	BISHOP, DAN L.	\$62,217
TOBEY, DUANE FRANKLIN	\$67,505	WAGNER, MICHAELLA	\$56,712	WINDERS, KIRK A.	\$85,020	BISTLINE, ROGER A.	\$62,217
TOBEY, RANDALL S.	\$92,843	WASHBURN, ROSELIE L.	\$70,427	HEALTH DEPARTMENT		BLANCHARD, BRENT LEE	\$94,815
UPCHURCH, BRETT K.	\$59,513	WHITE JR, ROBERT T	\$54,156	AIGNER, NOLA R.	\$54,206	BRADLEY, JENNIFER M.	\$68,278
VANCE, AARON M.	\$49,405	WRIGHT, HEATHER J.	\$59,392	BOLEY, SUE A.	\$71,523	CARPENTER, SHANE DOUGLAS	\$65,170
VANDEPOL, MARISA B	\$40,204	ZEIGLER, DIANE M.	\$54,156	BOWERS, ALENE I.	\$47,196	COLES, VERN ALLEN	\$62,217
VANDEPOL, MARK L.	\$67,505	GENERAL SERVICES		BRIEN, AUSTIN G.	\$51,720	COLVIN, JANNA D.	\$70,427
VANDEPOL, TINA T.	\$61,368	ALESSIO JR, THOMAS A	\$73,111	BROOKS, SUSAN E.	\$73,879	COX, NATHAN M.	\$58,608
VANDERWEIDE, SCOTT A.	\$67,505	AMADEO, GREGORY J.	\$43,100	CADENILLAS, JUAN C.	\$73,879	CUMMINGS, RODGER G.	\$62,217
VANGINKEL, JACOB L.	\$46,111	ANDERSON, DIANNA L	\$43,100	COPPOLA, ANA M.	\$58,771	DEBOLT II, DAVID R	\$62,217
VANHOOZER, SHAWN S.	\$76,478	AUST, BRIAN M.	\$70,517	DOOLEY, BETH C.	\$68,278	DENNING, GARY D.	\$78,552
VIERS JR, WENDELL W.	\$61,368	BALLARD, FRED D.	\$43,100	FRANTSVOG, CHRISTOFFER L	\$74,951	DRESS, JAMES R	\$71,523
WAGNER, DAVID C.	\$61,368	BATT, VERLA D.	\$47,196	GABRIEL, LEAH R	\$96,468	DVORAK, ROBERT W.	\$62,217
WARBURTON JR, THOMAS E	\$64,364	BOESEN, CONNIE S.	\$66,179	GARCIA-ZUNIGA, MARTHA	\$39,411	EDLER, PAUL W.	\$93,469
WARD, GREGORY	\$40,798	BOWERS, ANNE L.	\$56,712	GILMORE, KATHARINE S.	\$68,278	EDMONDSON, AMY L	\$36,223
WARREN, TRAVIS L.	\$61,368	BREWER, JACOB	\$33,136	GRIER, KRISTINA	\$59,446	EVISON, REX K.	\$61,373
WARRENDER, WILLIAM A.	\$59,513	BROOKS III, JOSEPH A.	\$45,127	GUST, LAURIE N.	\$78,552	FORS, WILLIAM CHARLES	\$62,217
WATLEY, LAQUANA S.	\$49,405	BROWN, KARL W.	\$71,523	HUTCH, CARMIN L.	\$80,128	GABBY, JEFFREY M.	\$94,815
WELBOURN, MATTHEW	\$36,223	BUCKLIN, DANA	\$51,750	JONES, BROOKE E.	\$58,629	GANTZ, STEVE W.	\$68,278
WELCH, NATASHA L	\$40,204	BURGUS, GREGORY J.	\$65,170	KEITER, TAMARA A.	\$89,156	GASS, PAUL J.	\$62,217
WENCK, BRYAN M.	\$48,356	CARDAMONE, EUGENE ROSS	\$68,278	KOZIN, RICHARD R.	\$111,173	GOEHRY, RICHARD K.	\$62,217
WENZEL, CAMERON W.	\$61,368	CASSETTARI, JOHN J.	\$56,712	KREFT, SARAH V.	\$59,035	GRIMM, ROBERT R.	\$62,217
WESSELINK, BRIAN ROBERT	\$76,478	CHIOVARO, JAMES J.	\$65,170	LEBEDA TOWNSEND, KARI	\$69,883	HALE II, FREDERICK A.	\$68,278
WEST, DANA L.	\$51,076	CHRISTENSEN, KELLY R.	\$43,100	MALONEY, DANIEL P.	\$58,678	HALL, MICHAEL E.	\$93,469
WHITE, KURT T.	\$63,867	COLYN, MIKE W.	\$43,100	MOON, JOANN B	\$47,196	HARRISON, KENNETH F.	\$62,217
WHITVER, JEREMY	\$61,368	COVINGTON, SANDRA R.	\$43,100	MOSES, PATRICIA L.	\$67,327	HEROLD, TIMOTHY R.	\$93,469
WIELENGA, TRAVIS LEE	\$77,377	CRAWFORD, DAVID M	\$54,206	MURPHY, BONNIE R.	\$71,523	HIBBARD, JACQUELINE A.	\$98,014
WILKINSON, KAREN R.	\$87,690	CREESE, JOAN R.	\$56,712	O'HARA, KRISTEN M.	\$61,614	HILL, RONNIE R.	\$62,217
WILLIAMS, CORY F.	\$97,359	DAY, JOHN W.	\$56,712	PARIC, AJSA	\$44,573	HINES, CHAD A	\$68,278
WILLIAMS, DUSTIN D.	\$48,356	DEWEY, ROGER M.	\$46,932	PENNING, AMANDA M.	\$53,730	HODGES, SAMUEL WINDFIELD	\$62,217
WILLSON, ERIC L.	\$61,368	DICKERSON, COREY D.	\$47,196	PERALTA, FANNY B.	\$39,411	HOING, BRIAN C.	\$62,217
WILSON, SCOTT T.	\$61,368	DUDA, BRET T.	\$68,278	SCHWAB, JAIMIE L.	\$68,278	HUINKER, DUANE J	\$62,217
WISSINK, HUNTER A	\$40,807	EASTER, RYAN T.	\$43,100	SEGURA, SOFIA	\$38,638	JOHNSON, JOEL J.	\$62,217
WONG, ANGELA D.	\$44,876	EVELETH, DAVID A.	\$49,405	SHIPMAN, ASHLEY L.	\$58,838	JOHNSON, THOMAS L.	\$62,217

POLK COUNTY NOTICES

KNOTT, DONAVAN D	\$62,217	CARD, MATTHEW C.	\$9.25	GEORGE JR, DENNIS D.	\$12.00	HERSELIUS, MADDYSON	\$10.03
KNOTT, DOUGLAS R.	\$62,217	CHARTER, ARIEL J	\$9.25	HATFIELD, NICHOLAS	\$12.00	HUNEMILLER, SARA A	\$10.03
KNUTSON, ZACHARIA M.	\$61,373	CHOAT, ADAM M	\$20.49	HINRICHS, SAMANTHA	\$10.03	JARNAGIN, HALLIE	\$10.03
LANGENFELD, JOSHUA J.	\$68,278	CLINE, MELODY L	\$10.08	HOCKENSMITH, ALLISON	\$10.03	JENKINS, TEYONTAE L	\$10.03
LUING, DAVID D.	\$62,217	COVERDELL, ARTHUR L.	\$10.41	HUTCHINSON, DARIN	\$12.00	JOHNSON, LOGAN	\$10.03
MARTIN, RACHELLE ANN	\$58,391	COVEY, MATTHEW R	\$20.49	KING, LOGAN P.	\$23.84	KING, MACHELLE M.	\$10.03
MCCABE, MICHAEL B.	\$62,217	CRAIGHTON, JILL E	\$11.33	LAZELLA, ABBIE L	\$18.98	KIRVIN, JACOB J.	\$10.84
MCNERNEY, BRIDGET S.	\$39,396	CULLINAN, STEVE D	\$10.41	MCCORMICK, MARK A	\$18.98	KORDICK, MONICA D	\$10.03
MILLER, MICHAEL A.	\$61,537	DAGGS, CAROL J	\$9.25	NERY, RALPH IVAN R	\$18.98	LONG, NATALIE	\$10.03
MOELLER, JESSICA L.	\$67,487	DAMMAN, WILLIAM A	\$9.25	NIELSEN, JOHN C	\$18.98	MAINE JR, CORY E.	\$10.84
MOORE, JERRY LEE	\$82,319	DEDECKER, MATTHEW J	\$11.14	NUZUM, LEXY L.	\$18.98	MARTIN, KAYLIE A	\$10.03
MORGAN, RONALD V.	\$53,466	DODGE, BRUCE G.	\$10.41	ORWENYO, MALCOLM M	\$18.98	MAURO, BRANDON	\$10.84
MUNOZ, KELLI M.	\$48,810	DRAKE, LESLIE A	\$11.33	QUANBECK, KEITH J.	\$12.00	MILLER, JOSEPH	\$10.84
NEKOLA, BRETT R.	\$62,217	GAUTSCH, JACKLYN A	\$11.33	ROBERTS, MACK	\$18.98	MULLINS, BRIANA N	\$10.03
NELSON, RANDY A.	\$62,217	GROVES, KALI F	\$7.73	ROBINSON, TREVER A	\$18.98	NORRIS, LACI L	\$10.03
NORTON, PATRICK D	\$65,170	GUTHRIE, JOHN W	\$13.37	ROOS, KODY J.	\$18.98	QUIJANO, CONNOR L	\$10.03
OLDSON, BRIAN J.	\$62,217	HARPER, CHARLES E.	\$10.41	SOMMERLOT, CARLY J.	\$10.03	RIPPERGER, BAILEY	\$10.03
OWEN, ROBERT MARK	\$68,278	HELD, JUSTIN S	\$11.14	SPRAGUE, MATTHEW D.	\$18.98	ROSENBAUM, JAKE R	\$10.03
PARKER, MICHELLE D.	\$56,712	HIGHNAM, EMILY S	\$12.00	WADDELL, PARKER	\$15.88	ROSS, NICHOLAS K.	\$10.84
PENCE, ANTHONY R.	\$53,466	JOHNSON, KYLE N	\$9.25	WILDER, KRISTAPER D.	\$23.84	SANDERS, HENRY L	\$10.84
PEPPMEIER, DENNY D.	\$62,217	JUDSON, JOE W	\$10.41	WISELL, ZACHARY F	\$18.98	SILVER, SPENCER S	\$10.03
RAGALLER, DAVID W	\$78,103	KOOL, JENNA M	\$11.33	YOUNG, TOMMIE LEE	\$12.00	SLATER, MITCHELL R	\$10.03
RARDIN, CHRISTOPHER J.	\$70,694	KRAMER, AMY M	\$20.49	GENERAL SERVICES		STEIN, NICHOLAS M	\$10.84
RECTOR, DRAKE S	\$65,170	KUEHN, ANTHONY P	\$9.25	ALLEN, DENNIS C.	\$14.54	THEIS, HANNAH M	\$10.03
RICE JR, ROBERT N.	\$140,044	KURNS, ANNA M	\$9.25	ARONSON, DAVID K.	\$14.54	THOMAS, TRISTA J	\$10.03
RUMBAUGH, JEFFREY M.	\$62,217	LANOUE, MICHAEL J.	\$11.14	CARTER, SHAWN	\$14.54	WARD, KIPPJE J	\$10.84
SCHUSTER, HEIDI A	\$44,807	LANZ, JONATHAN M	\$7.73	COMPIANO, RALPH J.	\$15.19	WELCH, JACOB B.	\$10.84
SHEEHAN JR, FLOYD E	\$62,217	LESCH, TYLER S	\$9.25	FLINN, GORDON	\$14.54	WILLIAMS JR, SAMUEL M	\$10.84
SORENSEN, DENNIS L.	\$93,469	LEWIS, TIFFANY C	\$9.25	FOGGIA, LOUIS J	\$14.54	WOODSIDE, ROXANNE M	\$10.03
SPOONER, RUSSELL M	\$68,278	LISTER, CARROLL L.	\$10.41	GUESSFORD, JANICE	\$14.54	MEDICAL EXAMINER	
STEELE, LINDA C	\$54,156	LOATS, MINDY S	\$9.25	HOHN, JERRY L	\$14.54	DAVIS, JULIE C.	\$27.38
STEINBACH, RANDALL E.	\$68,278	LOGHRY, HANNAH J	\$9.25	MCNERNEY, JOHN M	\$14.54	FRY, JACQUELINE A.	\$27.38
STRABLE, DENNIS E.	\$62,217	MARTIN, MARK E	\$9.25	SCIONE, MICHAEL A.	\$14.54	LOWE, BARRY A.	\$32.72
THOMPSON, CURTIS G.	\$64,674	MCCAULEY, KENDRA L	\$10.08	TUMEA, JOSEPH	\$14.54	MAURO, MICHELLE	\$27.38
TIANO, MARIO	\$51,430	MCGOVERN, MOLLY A	\$17.24	VONK, MICHAEL R	\$14.54	STUART, LISA A	\$27.38
TOLKAN, CODY J	\$49,760	MCKINNEY, HEATHER A	\$9.25	HEALTH DEPARTMENT		PUBLIC WORKS	
TYLER, JOHN R.	\$62,217	MELLINGER, MOLLY L.	\$11.33	BANKER, LINDSAY D.	\$26.14	COADY, DUSTIN	\$10.84
VANDELUNE, BRET A.	\$124,386	NAEVE, CURTIS E.	\$10.41	BEARDSLEY, JENNIFER	\$19.87	EVANS, DAVID W	\$12.41
VIERE, CHRISTOPHER M.	\$82,319	NAEVE, RONALD S	\$10.41	BERNARD, TINA L.	\$26.14	HIBBARD, GREGORY F.	\$12.41
VOIGT, JAMES R.	\$78,552	NELSON, TYLOR R	\$11.14	BOEKELMAN, KATRINA L.	\$26.14	MUNDELL, MICHAEL M.	\$12.41
WESSING, DEBRA L.	\$49,405	NITZEL, DIANE MARIE	\$11.33	BONNSTETTER, IVY A.	\$26.14	NEUBAUER, ETHAN	\$10.84
WHATLEY, BRYAN J.	\$67,487	OLMSTEAD, BRYAN E.	\$20.49	BROWN, FRANCINE W.	\$26.14	RAGALLER, ZACHARY D	\$10.84
WIDMAN, RICHARD A.	\$71,523	OTTERTSON, PAIGE N	\$9.25	BROWN, MARIE	\$24.97	SPOONER, WYATT	\$10.84
WILLIAMSON, DAVID ALAN	\$113,055	PICHA, RHONDA L	\$11.14	CASWELL, ABIGAIL	\$26.14	STEENHOEK, CRAIG A	\$12.41
WOLKEN, TRENT	\$101,094	PRIEST, CALEB S	\$10.41	DAVIS, JILL M.	\$26.14		
WONG, CHARLES	\$94,815	QUECK, LANCE C	\$11.14	DUKE, ANN	\$26.14		
WOODSIDE, WILLIAM R.	\$78,552	RAMIREZ, ANGEL S	\$10.41	EASTRIDGE, JACKIE R.	\$18.15		
VETERAN AFFAIRS		RINGGENBERG, FRANCES J	\$9.25	FOLLMANN, ALYSSA	\$26.14		
ALESSIO, JOHN	\$51,429	ROSS, BRIENNA	\$9.25	FOSTER, LISA M.	\$26.14		
BUCH, REBECCA L.	\$92,842	SCAGLIONE, ANTHONY G	\$10.08	FREDERICK, SIEDDA	\$26.14		
KIFER, ANGEL M.	\$62,217	SCHMELING, MELISSA M	\$12.00	FREML, CASSIE	\$26.14		
LEMMO JR, NICHOLAS J.	\$72,679	SCHULTE, DANIEL J.	\$10.41	GILLESPIE, TONIA J.	\$26.14		
MORTENSEN, MICHAEL J.	\$49,432	SEILER, MIKAYLA E	\$9.25	GREEN, SHANNON	\$26.14		
STRADLEY, MEGAN L.	\$52,473	SIMMONS, JAMES D.	\$10.16	GUTIERREZ, ADRIANNE P.	\$19.87		
WOODWARD, CONNIE	\$49,452	STOUT, GEORGE D	\$10.41	HIRTH, ANN	\$26.14		
POLK COUNTY PART-TIME EMPLOYEES		STRATTON, TANNER J	\$9.25	HOENESS, LUCIA	\$19.87		
JULY 1, 2015		STRINGHAM, MATTHEW B	\$20.49	HYDE, SUZANNE M	\$26.14		
DEPARTMENT/EMPLOYEE NAME	HOURLY RATE	THACKER, ROY L	\$11.14	JIMMERSON, ANDREA K.	\$26.14		
COM, FAMILY & YOUTH SVCS		THOMPSON, CAPRICIA L	\$10.08	JONES, STEPHANIE R.	\$18.15		
ADAIR, CHERYL K.	\$17.36	THURMAN, DALLAS J	\$11.14	LUNDHOLM, SHELLY	\$26.14		
ANDERSON, RICHARD L.	\$14.54	VERMIE, RUSSELL G	\$10.41	MCDANIEL, MICHELLE	\$26.14		
BAKER, KATHLEEN	\$14.54	WAAGE, ELIZABETH L	\$12.00	MOORE, ROBIN R.	\$18.15		
BELLERJEAU, LINDSAY N.	\$32.72	WHITE, SHELLY A	\$10.41	OLSON, KAY	\$26.14		
BRACKETT, PAIGE	\$14.54	WHITNEY, MICHAELA S	\$9.25	PARRISH, ERICA	\$39.17		
CARR, BATES	\$21.76	COUNTY ATTORNEY		PHILLIPS, JEAN A.	\$26.14		
CLEMMONS, WILLIAM A.	\$21.76	HERSELIUS, LANY SUE	\$15.88	REED, LORI L	\$39.17		
COCKERHAM, JESSICA L.	\$14.54	REYNOLDS, ANNIE	\$36.77	RENAUD, CAROLE L.	\$18.15		
COOPER, LISA	\$14.54	COUNTY AUDITOR		RICE, CONSTANCE SUE	\$18.15		
CORNELIUS, LYNNE M.	\$27.19	AUTRY, RONALD D.	\$13.91	SAPP, REBECCA S.	\$26.14		
DIXON, TERESA	\$16.52	LOSE, MARTIN D.	\$16.60	SCHAEFER, CAROLYN	\$33.79		
ELLIOTT, DIANE	\$14.54	SCAGLIONE, PETE E.	\$16.60	SMITH, CLINTON R.	\$39.17		
FREDERICKSON, CHRIS L.	\$21.76	STEIN, BRENDA S	\$13.91	SONDALL, CHERYL C.	\$26.14		
GATES, KATHLEEN M.	\$18.42	CO BOARD OF SUPERVISORS		STRABLE, LINDSEY	\$26.14		
HAQ, IMRAN	\$15.88	BOLTEN, CHRISTOPHER	\$23.84	STREET, WENDY	\$39.17		
LEPPERT, RENE	\$17.18	BRIGGLE, RICKEY L	\$20.79	TAM, EDWARD D.	\$29.41		
MILLER, SHERI L	\$14.54	BRIGGS, SHONA L	\$16.36	THORNTON, JOANN N.	\$19.87		
NELSON, CAROLYN	\$32.26	BURHAM, DREW C.	\$20.79	TITUS, CATHERINE J.	\$19.87		
OLSON, NATALIE K	\$17.18	CROSS, RANDY P	\$23.84	WECKMAN, SARA	\$18.15		
PEREZ, HIVONE	\$26.14	FIELDS, SCOTT D	\$23.84	WOIWOOD, LISA A.	\$26.14		
RISTA U, RICHARD	\$14.54	HARGENS, ROBERT A	\$20.79	HUMAN RESOURCES			
ROBY, HOLLY E.	\$14.54	HICKLE, RICHARD	\$20.79	AGEY, JACKSON	\$10.84		
ROCKWELL, ELIZABETH A	\$16.52	JORGENSON, JAMES A	\$23.84	AGEY, KATHERINE	\$10.03		
SCAGLIONE, MARY L.	\$16.52	MICHAEL, BRETT P.	\$22.60	ALBERS, DANIEL	\$15.98		
SCHAEFER, MAUREEN	\$18.42	NIELSEN, TERRY	\$20.79	ALESSIO, TYLER	\$10.03		
SCHAEFFER, RICHARD K.	\$14.54	OLESON, JAMES	\$20.79	BANKS, CAMERON N.	\$10.84		
SIMMONS, KASSIDY	\$21.76	PALMER, SHAWN L	\$20.79	BARNES, ZAAKARY	\$10.03		
VERSCHUER, CAROLINE R.	\$18.42	PARKINS, LARRY C	\$20.79	BURGUS, ELIZABETH ANN	\$10.03		
WAGNER, LINDA R.	\$26.14	TURNER, RONALD	\$20.79	COPLEY, CALEB	\$13.60		
WHELAN, ELISABETH A	\$26.14	COUNTY SHERIFF		DAYTON, LILY	\$10.03		
WILLIAMS, TRAVIS	\$21.76	ALLEN, BRANDI M	\$12.00	DEARDEN, MIKAYLA	\$10.03		
YOUNG, JOANN M	\$26.14	ANDERSON, TRAVIS R	\$18.98	DESIO, CLARE	\$10.03		
CONSERVATION		ANDREWS, BRET	\$23.84	ERICKSON, BENJAMIN	\$10.84		
ACREE, JOHN	\$9.25	BARROW, ANTIONE L.	\$12.00	EVANS, JERRY M	\$10.03		
ASWEGAN, MATTHEW A	\$20.49	BRITT, DONNA M.	\$12.00	FABER, HALEY	\$10.03		
BAIER, JARED M	\$11.14	BRODEUR, BRIAN	\$23.84	FITZGERALD, ELIZABETH A	\$10.03		
BAKER, ERIC R	\$10.41	BROWN, SHERRY L	\$18.98	FLEMING, ROBERT	\$12.41		
BALUS, CHARLES C	\$11.14	CASAS, JACQUELINE	\$18.98	FRAZIER, DRESHON R	\$10.03		
BARNETT, TAYLOR B	\$10.41	CONDON, BRANDON L	\$18.98	GLENN, RACHAL K	\$10.03		
BAUMBERGER, CASEY C	\$9.25	CRAIG, JAMES M.	\$12.00	GOBLE, TYLER D	\$10.84		
BECKHAM, MACKENSIE M	\$9.25	DAVIS, JEREMIAH	\$18.98	HAGEDORN, JUSTIN J	\$10.03		
BEEBE, CHARLES W	\$10.41	DOBERNECKER, ROBYN	\$23.84	HARDAT, MICHEAL J.	\$10.84		
BROWN, MATTHEW W	\$10.41	FRANCISCO, TODD A.	\$12.00	HARRIS, JULEO M	\$10.03		

PUBLIC NOTICE

NOTICE OF HEARING ON THE PROPOSED AMENDMENT TO THE COMPREHENSIVE LAND USE PLAN MAP AND THE PROPOSED ZONING MAP AMENDMENT TO THE AREA DESCRIBED BELOW AND AS PROVIDED FOR UNDER THE POLK COUNTY ZONING ORDINANCE AND UNDER CHAPTER 331 AND CHAPTER 335 CODE OF IOWA, AS AMENDED.

TO: All interested persons within the unincorporated territory of Polk County, Iowa:

NOTICE IS HEREBY GIVEN THAT on Monday the 27th day of July 2015, at 7:00 P.M., a public hearing will be held by the Polk County Zoning Commission in the meeting room of the Polk County Public Works Department, Planning Division, 5885 N.E. 14th Street, Des Moines, Iowa regarding a Rezoning Petition. The petitioners are requesting a Polk County Zoning Map amendment from the GC-General Commercial District to the LI-Light Industrial District and a Polk County 2030 Comprehensive Plan Map amendment from the Highway Commercial Classification to the Light Industrial Classification for the subject property located at 1380 NE 66th Avenue. The district and parcel number of the subject property is 270/00029-005-000, the property contains 7.3 acres and it is located in Saylor Township.

The subject property and proposed map amendments are described as follows:

Petitioners: Denis Frischmeyer representing FFI Investments LLC, 2500 W 2nd Avenue, Indianola, Iowa and Jack Houghton, 12814 Cardinal Lane, Urbandale Iowa.

The petitioners provided the following appeal with the Rezoning Petition application, "The property is 7.398 acres. My hope is to split the property in half and build two (2) buildings. Contractor service type - ABC Supply. Selling products to other trades and retail."

Polk County Zoning Map Amendment: GC-General Commercial District to LI-Light Industrial District

Polk County 2030 Comprehensive Plan Amendment: Highway Commercial Classification to the Light Industrial Classification

Legal Description of subject property: -EX PARCELS F & H W 175F & N 40F- E 15A SE 1/4 NE 1/4 LESS RD SEC 2-79-24, Saylor Township

Anyone wishing to appear before the Polk County Zoning Commission shall have an opportunity to be heard. A change in zoning districts and use classification will affect all of the real estate, buildings and structures includ-

POLK COUNTY NOTICES

ed in the area being amended. The information identified on this agenda/notice may be obtained in accessible formats by qualified persons with a disability. To receive more

information or to request an accommodation to participate in a meeting, hearing, service, program, or activity conducted by this department/office, please contact Polk County Public

Works, Planning & Development, 5885 N.E. 14th Street, Des Moines, Iowa 50313, (515) 286-3705. POLK COUNTY ZONING COMMISSION BY: John Shaw, Chairperson

ATTEST: BY: Bret VandeLune, Planning & Development Manager

PUBLIC NOTICES

PUBLIC NOTICES DEADLINES AND REQUIREMENTS

The deadline for public notices is 3 p.m. Wednesday, 7 business days prior to publication date. TO ENSURE ACCURACY, NO PUBLIC NOTICES WILL BE ACCEPTED BY FAX OR TELEPHONE. We must be notified of any changes to or cancellations of previously submitted notices no later than noon Thursday prior to publication. Notices should be typed (including all signatures, preferably double-spaced) and accompanied by a cover letter stating any publication requirements (such as the number of times the notice is to be published and whether it must be published by a certain date), whom to bill, and a phone number at which you can be reached should any question arise. When submitting by mail, send all public notices to: Business Record Attn: Danielle Miller The Depot at Fourth 100 Fourth St. Des Moines, Iowa 50309 (515) 288-3338 ext. 217 By e-mail, send public notices to: publicnotices@bpcdm.com. E-mails should be sent either in a Microsoft Word or Excel document, Text, or PDF. Please direct all inquiries concerning billing and affidavits of publication to Becky Hotchkiss at (515) 288-3338 ext. 436.

ORIGINAL NOTICE In The Iowa District Court For Polk County Case No. LACL132267

JAY D. LEYDENS, Plaintiff, v. DONALD L. WOODS, Defendant.

TO THE ABOVE-NAMED DEFENDANT(S): You are notified that a Petition has been filed in the office of the Clerk of this Court, naming you as the Defendant(s) in this action, which petition prays the Court enter judgment against you, Defendant Donald L. Woods, in a sum that will fairly and adequately compensate the Plaintiff for his damages and interest thereon as provided by law and for the cost of this action incurred as a result of a motor vehicle collision that occurred on May 10, 2014 on NE 14th Street in Des Moines, Iowa. Plaintiff also requests such further and other relief as the Court deems reasonable and equitable. (All of which are more particularly described in the Petition). The attorney for the Plaintiff is Billy J. Mallory, whose address is 6701 Westown Pkwy, Suite 100, West Des Moines, IA 50266. That attorney's phone number is (515) 274-1450; facsimile number (515) 274-1488. You must serve a motion or answer on before the 6th day of August, 2015, and, within a reasonable time thereafter, file your motion or answer with the Clerk of Court for Polk County, at the courthouse in Des Moines, Iowa. If you do not, judgment by default may be rendered against you for the relief demanded in the Petition. If you require the assistance of auxiliary aids or services to participate in court because of a disability, immediately call your district ADA coordinator at 286-3394. (If you are hearing impaired, call Relay Iowa TTY at 1-800-735-2942).

Randy Osborn
CLERK OF COURT
Polk County Courthouse
Des Moines, Iowa 50309

IMPORTANT: YOU ARE ADVISED TO SEEK LEGAL ADVICE AT ONCE TO PROTECT YOUR INTERESTS. Published in the Business Record on July 3, 10 and 17, 2015.

AMENDED ORIGINAL NOTICE In The Iowa District Court For Polk County

Equity No. EQCE078370 JAMES B. NUTTER & COMPANY, Plaintiff, v. ALL PERSONS WITH AN INTEREST IN THE ESTATE OF JACK WHITLOW, DECEASED MAY 18, 2015, SPOUSE OF JACK WHITLOW, JACK W. WHITLOW, JOANNE POHLMAN, BARB ALEXANDER, STATE OF IOWA, and UNITED STATES OF AMERICA, Defendants.

TO THE ABOVE-NAMED DEFENDANT(S): You are notified that a petition has been filed in the office of this court naming you as the defendant in this action. The petition was filed on June 2, 2015, and prays for foreclosure of plaintiff's mortgage against the property at 2835 Westover Blvd., Des Moines, IA 50322, which is legally described as Lot 4 in Westover No. 2, an Official Plat, now included in and forming a part of the City of Des Moines, Polk County, Iowa. For further details, please review the petition on file in the clerk's office. The plaintiff's attorney is Gregory J. Kreitner, of Metcalf, Conlon & Siering, P.L.C., whose address is 126 West Second Street, Muscatine, Iowa 52761-3713. His phone number is (563) 263-9494; his facsimile number is (563) 263-7824. You must serve a motion or answer on or before August 7, 2015, and within a reasonable time thereafter file your motion or answer with the Clerk of Court for Polk County, at the county courthouse in Des Moines, Iowa. If you do not, judgment by default may be rendered against you for the relief demanded in the petition. If you require the assistance of auxiliary aids or services to participate in a court action because of a disability, immediately call your District ADA Coordinator at 1-515-286-3394. If you are hearing impaired, call Relay Iowa TTY at 1-800-735-2942.

Randy Osborn
CLERK OF THE ABOVE COURT
Polk County Courthouse
Des Moines, Iowa 50309

IMPORTANT: YOU ARE ADVISED TO SEEK LEGAL ADVICE AT ONCE TO PROTECT YOUR INTERESTS. Published in the Business Record on July 3, 10, and 17, 2015.

Broadlawns Medical Center Paid Expenditures JAN - MAR 2015		
VENDOR	DESCRIPTION	AMOUNT
181 FIT TECH	SUPPLIES	\$162.50
1-STEP DIRECT ASSOCIATES	SUPPLIES	\$768.00
3000 GRAND APTS LLC		
	RENT/UTILITIES	\$6,134.44
A.J. ALLEN MECHANICAL CONT. INC		
	OUTSIDE HIRE	\$12,952.90
ABBOTT LABORATORIES-NUTRITION		
	SUPPLIES	\$250.42
ABILITY NETWORK INC.	SERVICES	\$3,087.00
ACCESS MEDICAL SUPPLY INC		
	SUPPLIES	\$2,409.26
ACCOUNT CONTROL TECHNOLOGY INC		
	PAYROLL DEDUCTION	\$2,635.93
ACCOUNTABLE HEALTH SOLUTIONS		
	ADMIN EXPENSE	\$5,015.00
ACGME	CONTINUED EDUCATION	\$9,500.00
ACS SUPPORT	PAYROLL DEDUCTION	\$500.50
ACUMED LLC	SUPPLIES	\$13,608.77
ADVANCED INSTRUMENTS INC		
	SUPPLIES	\$1,373.66
ADVANCED MEDICAL IMAGING OF IOWA		
	OUTSIDE HIRE	\$508,056.12
ADVANCED MEDICAL PHYSICS LLC		
	ADMIN EXPENSE	\$1,650.00
ADVANCED SERVICES INC.		
	ADMIN EXPENSE	\$606.48
AHLERS AND COONEY PC		
	ADMIN EXPENSE	\$7,062.00
AIRGAS USA, LLC	SUPPLIES	\$13,131.16
ALCON LABORATORIES, INC.	SUPPLIES	\$96.45
ALEXANDERS PHOTOGRAPHY		
	OUTSIDE HIRE	\$20.00
ALIMED INC	SUPPLIES	\$1,477.43
ALK-ABELLO, INC	SUPPLIES	\$350.71
ALLEN MEDICAL SYSTEMS	SUPPLIES	\$752.16
ALLENDER BUTZKE ENGINEERS		
	OUTSIDE HIRE	\$11,460.00
ALLERGAN USA INC	SUPPLIES	\$9,829.20

ALPINE CHIMNEY SWEEP SERVICES	\$390.00
AMER ACAD OF PEDIATRICS DUES	\$730.00
AMERICAN MASTER TECH SCIENTIFIC SUPPLIES	\$1,435.57
AMERICAN PSYCHOLOGICAL ASSOCIATION DUES	\$298.00
AMOS CONTINUED EDUCATION	\$750.00
AMSAN SUPPLIES	\$142.98
ANGIO DYNAMICS SUPPLIES	\$23,876.77
ANSELL SANDEL MEDICAL SOULUTIONS SUPPLIES	\$455.15
APPLIED MEDICAL SUPPLIES	\$2,292.50
ARMSTRONG MEDICAL SUPPLIES	\$2,830.20
ARROW INTERNATIONAL SUPPLIES	\$13,168.65
ARTEC ENVIRONMENTAL SERVICES	\$825.00
ARTHREX INC SUPPLIES	\$66,345.43
ARTHROSURFACE INC SUPPLIES	\$19,733.00
ASI MODULEX SUPPLIES	\$7,863.53
ASPEN SURGICAL SUPPLIES	\$378.03
AUDITOR /THE STATE OF IOWA ADMIN EXPENSE	\$850.00
AUTOMATIC DOOR GROUP INC OUTSIDE HIRE	\$1,837.82
AVESIS THIRD PARTY ADMIN PAYROLL DEDUCTION	\$18,943.40
AXOGEN CORPORATION SUPPLIES	\$11,460.00
BAILEY ROOFING CONTR INC OUTSIDE HIRE	\$445.00
BAKER ELECTRIC INC OUTSIDE HIRE	\$1,636.10
BAKER GROUP OUTSIDE HIRE	\$7,887.45
BAKER HEALTHCARE CONSULTING INC CONSULTING EXPENSE	\$16,556.69
BANKERS LEASING COMPANY EQUIPMENT	\$194.08
BAXTER HEALTHCARE CORP SUPPLIES	\$3,870.70
BAYER HEALTHCARE LLC SUPPLIES	\$16,355.71
BEAVER PROPERTIES LC RENT/UTILITIES	\$106,861.57
BEAVERDALE NEIGHBORHOOD ASSOCIATION OUTSIDE HIRE	\$85.00
BECKMAN COULTER, INC. SUPPLIES	\$3,220.73
BECKY TEED ADMIN EXPENSE	\$200.00
BEEKLEY CORPORATION SUPPLIES	\$3,422.44
BELIMED INFECTION CONTROL EQUIPMENT	\$1,737.58
BELL MEDICAL INC SUPPLIES	\$5,260.71
BEN FRANKLIN INSTITUTE CONTINUED EDUCATION	\$399.00
BERNICE SHANNON OUTSIDE HIRE	\$100.00
BEST BUY BUSINESS ADVANTAGE SUPPLIES	\$1,675.92
BG MEDICAL SUPPLIES	\$1,390.95
BIO FIRE DIAGNOSTICS, INC SUPPLIES	\$57,492.18
BIO RAD LABORATORIES SUPPLIES	\$23,785.42
BIOMERIEUX INC SUPPLIES	\$1,994.58
BIOMET SPORTS MEDICINE SUPPLIES	\$3,933.00
BIOMET, INC. SUPPLIES	\$7,219.00
BIONIX SUPPLIES	\$1,444.00
BIRD & CRONIN MEDICAL SUPPLIES	\$202.01
BLAKE K RENNER ADMIN EXPENSE	\$3,657.00
BLANK CHILDRENS HOSPITAL CONTINUED EDUCATION	\$40.00
BOESEN THE FLORIST ADMIN EXPENSE	\$36.99
BOSTON SCIENTIFIC CORP SUPPLIES	\$27,325.00
BRACCO DIAGNOSTICS INC SUPPLIES	\$18,357.79
BRANDI MACE PROFESSIONAL FEES	\$3,750.00
BRET MCFARLIN PROFESSIONAL FEES	\$90.00
BRET RENSHAW SERVICES	\$314.50
BRICK N BLOCK INC OUTSIDE HIRE	\$6,200.00
BRIGGS HEALTHCARE SUPPLIES	\$1,740.46
BROADLAWNS DENTAL ACCT INSURANCE	\$152,755.78
BROADLAWNS FOUNDATION PAYROLL DEDUCTION	\$56,116.05
BROADLAWNS GUILD PAYROLL DEDUCTION	\$16,589.85
BROADLAWNS HOUSE STAFF PAYROLL DEDUCTION	\$435.00
BROADLAWNS PATH PAYROLL DEDUCTION	\$186,178.56
BROADLAWNS PATIENT ACCTS PAYROLL DEDUCTION	\$1,156.07
BROWNS MEDICAL IMAGING EQUIPMENT	\$1,330.50
BSC SUPPLY SUPPLIES	\$1,010.00
BSN MEDICAL INC SUPPLIES	\$3,462.03
BTG INTERNATIONAL DIRECT SUPPLIES	\$6,630.00

BUSINESS PUBLICATION CORP INC PUBLICATIONS	\$626.42
C.R. BARD INC SUPPLIES	\$27,197.03
CANCER DIAGNOSTICS, INC SUPPLIES	\$907.61
CAPITAL SANITARY SUPPLY SUPPLIES	\$1,569.47
CARDINAL HEALTH PHARMACEUTICALS/OH	\$3,130,456.31
CAREFUSION SUPPLIES/EQUIPMENT	\$58,153.47
CARESTREAM HEALTH INC REPAIRS	\$4,686.43
CARSTENS SUPPLIES/OUTSIDE HIRE	\$151.64
CDW GOVERNMENT INC SUPPLIES	\$2,061.85
CENTRAL IA HOSP CORP OH/PROF FEES/SVC/SUPPLIES	\$229,853.94
CENTURION MEDICAL PRODUCTS SUPPLIES	\$1,610.95
CENTURY LINK UTILITIES	\$39,906.47
CEPHEID SUPPLIES	\$57,913.40
CERNER HEALTH SERVICES, INC SERVICES	\$6,478.38
CERNER HEALTHCARE SOLUTIONS, INC SERVICES	\$1,936.20
CERTIFIED LANGUAGES INTL SERVICES	\$3,175.50
CHEMBIO DIAGNOSTIC SYSTEMS, INC SUPPLIES	\$5,874.61
CHI- IOWA CORP- PROF FEES/OUTSIDE HIRE	\$32,700.00
CHRISTY BENSON ADMIN EXPENSE	\$445.00
CINTAS CORPORATION SERVICES	\$180.00
CITY OF DALLAS CENTER UTILITIES	\$271.28
CITY OF DES MOINES SERVICES	\$400.00
CITY WIDE HEATING & COOLING OUTSIDE HIRE	\$428.14
CIVCO MED SOLUTIONS SUPPLIES	\$617.00
CNA ADMIN EXPENSE	\$103.40
COLLEGE AMER PATHOLOGIST SUPPLIES	\$2,605.80
COMMERCIAL LIGHTING INC REPAIRS	\$478.70
COMPLIANT HEALTHCARE TECHNOLOGIES SUPPLIES	\$3,065.00
CONE INSTRUMENTS LLC SUPPLIES	\$2,631.98
CONMED CORPORATION SUPPLIES	\$2,678.33
CONNIE SULLIVAN OUTSIDE HIRE	\$1,060.00
CONSULTING & MARKETING CONSULTING EXPENSE	\$11,674.30
CONTINENTAL CASUALTY COMPANY ADMIN EXPENSE	\$163.77
CONTOURMD SUPPLIES	\$57.00
CONTROL-O-FAX SUPPLIES	\$258.82
COOK MEDICAL INC SUPPLIES	\$6,490.91
COOPER SURGICAL SUPPLIES	\$1,696.64
COPY SYSTEMS INC SUPPLIES	\$1,650.80
CORPORATE SUPPLY LLC SUPPLIES	\$2,996.10
COSMAN MEDICAL INC SUPPLIES	\$2,655.00
COVENTRY HEALTH CARE OF IOWA ADMIN EXPENSE	\$148,965.86
COVIDIEN SUPPLIES	\$1,375.00
CRITICAL CARE SYSTEMS OUTSIDE HIRE	\$349.45
CRYSTAL CLEAR WATER SUPPLIES	\$1,417.50
CYBERONICS EQUIPMENT	\$75,946.72
DAKOTA SECURITY SYSTEMS, INC EQUIPMENT	\$21,484.01
DALLAS CENTER MEDICAL ASSOCIATES ADMIN EXPENSE	\$59,047.75
DALLAS COUNTY TREASURER ADMIN EXPENSE	\$2,608.00
DATEx OHMEDA SUPPLIES	\$2,736.94
DAVID SMITH PROFESSIONAL FEES	\$625.00
DEAF SERVICES UNLIMITED OUTSIDE HIRE	\$3,430.00
DELL MARKETING L.P. SUPPLIES	\$149.81
DELTA LOCUM TENENS OUTSIDE HIRE	\$16,537.72
DENA GOEPPERICH OUTSIDE HIRE	\$800.00
DENTAL ARTS INC SUPPLIES	\$13,424.85
DENTAL PROSTHETIC SERVICES SUPPLIES	\$17,844.32
DEPUY ORTHOPAEDICS INC SUPPLIES	\$1,441.00
DES MOINES EAST & SOUTH DUES	\$50.00
DES MOINES WATER WORKS UTILITIES	\$31,391.33
DESIGNER IMAGES PHOTOGRAPHY OUTSIDE HIRE	\$900.00
DEX MEDIA EAST INC ADVERTISING	\$18.03
DIAGNOSTIC IMAGING ASSOC OUTSIDE HIRE	\$65.37
DIAL 411 UTILITIES	\$7.05
DIANA E NICHOLLS BLOMME CONTINUED EDUCATION	\$800.00
DICKSON SUPPLIES	\$657.00

PUBLIC NOTICES

DIRECT SUPPLY SUPPLIES	\$40.74
DIRECTV UTILITIES	\$3,797.80
DISABLED AMERICAN VETERANS ADVERTISING	\$170.00
DIVERSIFIED COLL SVC PAYROLL DEDUCTION	\$993.11
DJ ORTHOPEDICS LLC SUPPLIES	\$2,663.53
DOROTHY BEEBE OUTSIDE HIRE	\$23.31
DR. MICHAEL QUINN SUPPLIES	\$2,930.12
DRAKE UNIVERSITY CONTINUED EDUCATION	\$200.00
DSM AREA MEDICAL CONSORTIUM PROF FEES/DUES	\$32,748.98
DSM AREA REGIONAL TRANSIT AUTH ADMIN EXPENSE	\$1,890.00
DWEWARE SERVICES	\$1,300.00
DYNAMIC LABORATORIES, INC SUPPLIES	\$739.63
DYNAMIC MEDIA DUES	\$1,559.40
E.H.R HITECH INCENTIVE ADMIN EXPENSE	\$1,474.08
EBSCO SUBSCRIPTIONS SUBSCRIPTIONS	\$1,573.00
ECOLAB SUPPLIES	\$10,778.33
ECOLAB PEST ELIMINATION SERVICES	\$281.06
EDWARDS LIFESCIENCES SUPPLIES	\$65.00
EIDEBAILLY ADMIN EXPENSE	\$3,516.35
ELECTROMED, INC EQUIPMENT	\$462.00
ELECTRONIC ENGINEERING CO SERVICES	\$4,411.52
ELITE GLASS & METAL, LLC SERVICES	\$515.00
EMC RISK SERVICES, LLC INSURANCE	\$10,783.01
EMDEON ADMIN EXPENSE	\$66,763.91
EMERGENCY MEDICAL PROD SUPPLIES	\$175.60
EMERSON NETWORK POWER SERVICES	\$6,113.00
EMS LEARNING RES CTR CONTINUED EDUCATION	\$2,600.00
EPILEPSY FOUNDATION OF IOWA ADVERTISING	\$2,000.00
ERIC DONELS PROFESSIONAL FEES	\$1,000.00
EVERGREEN PRINTING SUPPLIES SUPPLIES	\$236.82
FEDEX FREIGHT	\$896.03
FELIX STORCH INC SUPPLIES	\$560.00
FINLEY ALT SMITH PROFESSIONAL FEES	\$64,028.02
FISHER HEALTHCARE SUPPLIES	\$11,259.38
FLEX SPENDING PAYROLL DEDUCTION	\$162,308.90
FOLLETT SUPPLIES	\$9,784.69
FORWARD ADVANTAGE SUPPLIES	\$5,558.00
FRASER TRANSPORTATION SVC SERVICES	\$1,065.26
FYI ANSWERING SERVICE SERVICES	\$285.30
G I SUPPLY SUPPLIES	\$313.00
GARLAND'S INC SUPPLIES	\$258.70
GE HEALTHCARE EQUIPMENT/SERVICE	\$126,496.06
GE HEALTHCARE IITS USA CORP. EQUIPMENT/SUPPLIES	\$31,348.00
GE MEDICAL SYSTEMS EQUIPMENT/SUPPLIES	\$813.11
GEDDIS INC SUPPLIES	\$172.60
GENERAL FIRE AND SAFETY SERVICES	\$1,065.50
GENERAL SERVICE BUREAU INC SERVICES	\$37,523.61
GENESIS OCCUPATIONAL HEALTH SERVICES	\$78.00
GENOPTIX MEDICAL LABORATORY SERVICES	\$2,490.00
GOETZE DENTAL SUPPLIES	\$414.06
GOODWIN TUCKER GROUP SERVICES	\$6,532.50
GOSS SERVICE ASSOCIATES SUPPLIES	\$1,280.00
GRAHAM CONSTRUCTION CO INC OUTSIDE HIRE	\$13,036.77
GRAINGER SUPPLIES	\$1,524.89
GREAT AMERICA FINANCIAL SERVICES EQUIPMENT	\$991.49
GREAT WESTERN BANK TAIL INSURANCE	\$13,135.92
GREATER DES MOINES COMM. FOUNDATION CONSULTING EXPENSE	\$1,950.00
GREATER DES MOINES COMMITTEE, IN DUES	\$2,382.00
GREER LABS SUPPLIES	\$1,556.37
GUEST COMMUNICATIONS CORP SUPPLIES	\$554.52
GUNN & RICHARDS INC SUPPLIES	\$3,975.90
HALO BRANDED SOLUTIONS ADMIN EXPENSE	\$1,507.98
HALVORSON TRANE SUPPLIES	\$961.00
HALYARD SALES, LLC SUPPLIES	\$1,109.96
HAMMER MEDICAL SUPPLY SUPPLIES	\$5,612.39
HANSEN-PENMAN PHOTOGRAPHY OUTSIDE HIRE	\$568.00

HAVEL'S INC SUPPLIES	\$387.85
HAWKEYE BIOMEDICAL LLC OUTSIDE HIRE	\$2,255.25
HAYES SUPPLIES	\$746.90
HEALTH CARE LOGISTICS SUPPLIES	\$324.36
HEALTH SERVICES ASSOCIATES, INC CONSULTING EXPENSE	\$3,255.10
HEALTHNET CONNECT SERVICES	\$480.00
HEALTHSTREAM INC SERVICES	\$4,128.54
HEARTLAND DOOR AND FRAME, INC SERVICES	\$19,984.74
HELMER INC SUPPLIES	\$9,598.87
HEMOCUE AMERICA SUPPLIES	\$1,287.00
HENRY SCHEIN INC SUPPLIES	\$15,782.07
HEWLETT PACKARD CO SUPPLIES/MAINTENANCE EXP	\$17,155.60
HIM CONSULTING CONSULTING EXPENSE	\$2,265.12
HIRERIGHT, INC ADMIN EXPENSE	\$1,206.95
HOLOGIC INC SUPPLIES	\$35,537.38
HONEYWELL INTERNATIONAL INC SUPPLIES	\$425.85
HOODZ OF CENTRAL IOWA OUTSIDE HIRE	\$1,300.00
HORTY SPRINGER AND MATTERN ADMIN EXPENSE	\$359.63
HU-FRIEDY MFG. CO. LLC SUPPLIES	\$383.21
HUMANA SPECIALTY BENEFITS PAYROLL DEDUCTION	\$16,805.74
IA ASSOCIATION OF COMM PROVIDERS DUES	\$2,201.78
IA BOARD OF PHARMACY EXAMINERS LICENSE	\$540.00
IA CLINIC PC OUTSIDE HIRE/PROF FEES	\$46,227.94
IA CROWN CRAFTS INC SUPPLIES	\$1,977.32
IA DEPT OF NATURAL RESOURCES LICENSE	\$65.00
IA DEPT OF PUBLIC HEALTH LICENSE/CONTINUED EDUCATION	\$760.00
IA DEPT OF REVENUE ADMIN EXP/PAYROLL DEDUCTION	\$5,701.52
IA HOSPITAL ASSOCIATION CONT EDU/OUTSIDE HIRE	\$54,088.25
IA INTERNATIONAL CENTER OUTSIDE HIRE	\$81.25
IA KIDNEY PHYSICIANS PROFESSIONAL FEES	\$5,559.70
IA MEDICAID ENTERPRISE ADMIN EXPENSE	\$60,625.54
IA METHODIST MED CTR ADMIN EXP/CONT EDUC/SVC	\$4,465.07
IA PATHOLOGY ASSOC PC OUTSIDE HIRE	\$87,439.35
IA POISON CONTROL CENTER SERVICES	\$2,600.00
IA PSYCHOLOGICAL ASSOCIATION ADMIN EXPENSE	\$585.00
IA PUBLIC EMPLOYEES PENSION	\$2,112,792.20
IA RADIOLOGY PROFESSIONAL FEES	\$940.00
IA SHARES PAYROLL DEDUCTION	\$507.39
IA STATE W/H TAXES PAYROLL DEDUCTION	\$767,439.00
IA WORKFORCE DEVELOPMENT UNEMPLOYMENT/PERMITS	\$18,924.02
IBM CORPORATION SUPPLIES	\$650.00
IDEACOM OUTSIDE HIRE	\$2,340.75
ILLINOIS MUTUAL PAYROLL DEDUCTION	\$171.90
IMAGING TECHNOLOGIES EQUIPMENT/REPAIRS	\$15,188.40
IMMUCOR SUPPLIES	\$2,817.97
INDIANA HOSPITAL ASSOCIATION LICENSE	\$2,945.00
INFOMAX OFFICE SYSTEMS RENT/SUPPLIES	\$988.80
INNOVATIVE MEDICAL PRODUCTS SUPPLIES	\$256.00
INTEGRA LIFESCIENCES CORP SUPPLIES	\$19,846.17
INTELLIGENT MEDICAL OBJECTS, INC SUPPLIES	\$18,400.00
INTERACTIVATION HEALTH NETWORKS SUBSCRIPTIONS	\$4,279.00
INTERSTATE ALL BATTERY SUPPLIES	\$789.46
INTOXIMETER SUPPLIES	\$298.85
IOWA ASSOCIATION OF RURAL DUES	\$250.00
IOWA AUDIO VIDEO SERVICES	\$172.00
IOWA BARNSTORMERS ADVERTISING	\$10,000.00
IOWA CHILD SUPPORT PAYROLL DEDUCTION	\$46,077.81
IOWA FIRE EQUIPMENT COMPANY SUPPLIES	\$261.40
IOWA LUTHERAN HOSPITAL SERVICES	\$1,903.25
IOWA PSYCHOLOGICAL ASSOCIATION DUES	\$350.00
IOWA SPINE CARE PLC PROFESSIONAL FEES	\$24,635.90
IPA ONE EQUIPMENT/SUPPLIES	\$4,544.00
ITAMAR MEDICAL INC SUPPLIES	\$1,835.00

IVAN DELGADO PROFESSIONAL FEES	\$5,000.00
J & J HEALTH CARE SYSTEMS, INC SUPPLIES	\$26,045.32
J. F. AHERN CO. OUTSIDE HIRE	\$200.00
JACKIE SAFLEY OUTSIDE HIRE	\$850.00
JAEGER CORPORATION SERVICES	\$3,150.00
JAMES SOMMERS PROFESSIONAL FEES	\$161.07
JERRY GREIF OUTSIDE HIRE	\$720.00
JOHN BARDOLE PROFESSIONAL FEES	\$5,148.00
JOHN WALKER OUTSIDE HIRE	\$1,755.00
JOHNSON CONTROLS, INC. EQUIPMENT	\$12,335.00
JOY HESSE SERVICES	\$50.00
JULIUS BONELLO, MD PROFESSIONAL FEES	\$1,051.30
KARL STORZ ENDOSCOPY-AMERICA, IN EQUIPMENT/SUPPLIES	\$464.15
KEDRION BIOPHARMA INC SUPPLIES	\$1,987.77
KEMPER COST MANAGEMENT INSURANCE	\$12,199.05
KEN BALDUCHI LMT PAYROLL DEDUCTION	\$1,926.00
KEY SURGICAL SUPPLIES	\$381.00
KING DELIVERY SERVICE FREIGHT	\$6,922.05
KONE INC MAINTENANCE AGREEMENT	\$12,576.72
LABSCO SUPPLIES	\$41,291.09
LANDAUER INC SUPPLIES	\$674.78
LANGUAGE SELECT LLC OUTSIDE HIRE	\$19,694.25
LANGUAGETECH INC OUTSIDE HIRE	\$742.50
LARRY C. BOOK LICENSE	\$157.50
LEGRANT LAW FIRM, PC PROFESSIONAL FEES	\$8,436.39
LEICA MICROSYSTEMS INC SUPPLIES	\$156.48
LENOVO FINANCIAL SERVICES EQUIPMENT	\$5,351.37
LIFE INTERPRETATION, INC OUTSIDE HIRE	\$487.50
LIFE SERVE SUPPLIES	\$47,582.25
LIFECELL CORPORATION SUPPLIES	\$17,570.00
LIFENET SUPPLIES	\$8,574.45
LIGHTEDGE SOLUTIONS, INC SERVICES	\$2,200.00
LINCOLN FINANCIAL GROUP PAYROLL DEDUCTION	\$448,743.21
LMC INSURANCE & RISK MANAGEMENT INSURANCE	\$89,089.00
MAGELLAN DIAGNOSTICES, INC EQUIPMENT	\$1,534.60
MAHASKA HEALTH PARTNERSHIP ADMIN EXPENSE	\$1,540.00
MAIL SERVICES LLC SERVICES	\$1,227.39
MAINE MOLECULAR QUALITY CONTROLS SUPPLIES	\$356.02
MANGROVE COBRASOURCE INC ADMIN EXPENSE	\$1,181.25
MARKETLAB SUPPLIES	\$173.41
MARTIN HEALTH SERVICES SUPPLIES	\$11.22
MARY DUTCHER OUTSIDE HIRE	\$118.75
MARY GREELEY MEDICAL CENTER SUPPLIES	\$4,908.15
MARYLAND CHILD SUPPORT ACCOUNT PAYROLL DEDUCTION	\$1,943.27
MASIMO EQUIPMENT	\$286.07
MATRIX/IMPACT TELECOM UTILITIES	\$255.46
MATTHEW R BROWN PROFESSIONAL FEES	\$897.63
MAUREEN MYSHOCK MISCELLANEOUS PURCHASE	\$10.00
MAYO COLLABORATIVE SVC OUTSIDE HIRE	\$1,897.96
MCG HEALTH LLC SERVICES	\$17,575.12
MCKEE VOORHEES & SEASE PLC OUTSIDE HIRE	\$5,752.70
MCKESSON MEDICAL SURGICAL SUPPLIES	\$6,123.50
MED ONE CAPITAL FUNDING, LLC EQUIPMENT/SUPPLIES	\$41,085.00
MEDELA INC SUPPLIES	\$830.59
MEDIACOM UTILITIES	\$320.02
MEDIBADGE SUPPLIES	\$176.65
MEDICAL GRAPHICS CORPORATION SUPPLIES	\$486.00
MEDICAL MONOFILAMENT MANUFACTURING SUPPLIES	\$787.00
MEDICAP PHARMACY #8269 SUPPLIES	\$2,069.23
MEDIFAX-EDI, LLC ADMIN EXPENSE	\$39,800.00
MEDISOLV, INC SUPPLIES	\$15,300.00
MEDITECH EQUIPMENT/SERVICE	\$362,440.00
MEDIVATORS SUPPLIES	\$11,888.34
MEDLINE INDUSTRIES INC SUPPLIES	\$47,446.29
MEDTRONIC USA INC SUPPLIES	\$74,840.71
MERCK SHARP & DOHME CORP SUPPLIES	\$715.52

MERCY CLINICAL LAB OUTSIDE HIRE	\$6,062.60
MERCY COLLEGE TRAINING CENTER CONTINUED EDUCATION	\$68.00
MERCY MEDICAL CENTER CONTINUED EDUCATION	\$422.75
MERIDIAN INSTITUTE OF SURGICAL ADMIN EXPENSE	\$5,995.00
MERIT MEDICAL SYSTEMS, INC. SUPPLIES	\$1,505.29
MERRY X-RAY/SOURCEONE HEALTHCARE SUPPLIES	\$954.34
METHODIST OCCUPATIONAL HEALTH ADMIN EXPENSE	\$8,341.00
METLIFE PAYROLL DEDUCTION	\$342.72
MICHAEL QUINN SUPPLIES	\$5,454.60
MICHAEL WITTE PROFESSIONAL FEES	\$2,925.00
MICROFRAME CORP SUPPLIES	\$36.69
MICRSOFT EQUIPMENT	\$11.64
MIDAMERICAN ENERGY CO UTILITIES	\$278,617.50
MIDLANDS BUSINESS EQUIPMENT SUPPLIES	\$121.29
MIDWEST AMBULANCE SVC SERVICES	\$13,824.41
MIDWEST HEALTHCARE TEXTILE SERVICES SERVICES	\$60,066.73
MIDWEST LABS SUPPLIES	\$5,352.32
MIGALI SCIENTIFIC SUPPLIES	\$7,717.08
MIMEDX SUPPLIES/EQUIPMENT	\$66,717.00
MINDRAY DS USA, INC SUPPLIES/EQUIPMENT	\$6,392.32
MINNESOTA CHILD SUPPORT PAYMENT PAYROLL DEDUCTION	\$1,655.28
MIZUHO ORTHOPEDIC SYSTEMS INC SUPPLIES/EQUIPMENT	\$527.22
MMIC PROFESSIONAL FEES	\$7,808.00
MODERN OPTICAL INTERNATIONAL SUPPLIES	\$1,293.68
MONAGHAN CORP SUPPLIES	\$352.80
MONTINE GUTHRIE PAYROLL DEDUCTION	\$186.00
MOORE MEDICAL SUPPLIES	\$344.50
MOPEC INC SUPPLIES	\$236.50
MOR TAN INC SUPPLIES	\$256.98
MORTARA INSTRUMENT, INC EQUIPMENT	\$261.44
MRAS, INC OUTSIDE HIRE	\$3,470.00
MVAP MED SUPPLIES SUPPLIES	\$1,109.79
NALCO COMPANY SERVICE AGREEMENT	\$6,297.72
NATIONAL WIC ASSOCIATION DUES	\$100.00
NATUS MED INC SUPPLIES	\$242.04
NATUS NEUROLOGY INCORPORATED SUPPLIES	\$1,414.36
NEC CORPORATION OF AMERICA SUPPLIES	\$408.00
NEOPOST USA INC OUTSIDE HIRE	\$478.17
NEOTECH PRODUCTS SUPPLIES	\$148.12
NET HEALTH ADMIN EXPENSE	\$2,795.00
NEW ENGLAND JOURNAL OF MEDICINE SUBSCRIPTIONS	\$2,120.00
NICHOLAS GALIOTO PROFESSIONAL FEES	\$5,050.92
NOIR MEDICAL TECHNOLOGIES SUPPLIES	\$65.47
NUANCE COMMUNICATIONS EQUIPMENT	\$26,190.67
NUCLEAR SONICS ASSOCIATES OUTSIDE HIRE	\$133,825.00
NURSE FINDERS INC OUTSIDE HIRE	\$92.00
NURSES CHOICE CORP SUPPLIES	\$327.60
OFFICE OF STATEWIDE RECRUITMENT/SUPPLIES	\$3,749.41
OLYMPUS AMERICA INC SUPPLIES	\$7,889.32
ONNEN COMPANY SUPPLIES	\$4,877.30
OPTIMAL PHONE INTERPRETERS OUTSIDE HIRE	\$14,789.14
ORAL SURGEONS OUTSIDE HIRE	\$370.00
ORASCOPTIC- SURGICAL ACUITY SUPPLIES	\$595.00
ORGANOGENESIS INC. SUPPLIES	\$5,874.00
ORTHO TEK INC SUPPLIES	\$2,219.00
ORTHOMELIX SURGICAL DESIGNS SUPPLIES	\$4,291.00
ORTHOPEDIATRICS CORP SUPPLIES	\$2,630.00
OSPREY BIOMEDICAL SUPPLIES	\$947.00
OWENS & MINOR SUPPLIES	\$303,905.17
P.E.O DUES	\$48.50
PA SCDU PAYROLL DEDUCTION	\$4,158.49
PACIFIC INTERPRETER, INC OUTSIDE HIRE	\$16,300.00
PAM BEVERIDGE OUTSIDE HIRE	\$1,084.45
PAPER CORP SUPPLIES	\$1,841.60
PAR INC SUPPLIES	\$198.00
PARTNERS IN RECOGNITION, INC SUPPLIES	\$109.78
PATHOLOGY LAB PROFESSIONAL FEES	\$88,758.77
PATTERSON DENTAL SUPPLY SUPPLIES	\$1,058.72

PUBLIC NOTICES

PAY-LESS OFFICE PRODUCTS INC	
SUPPLIES	\$84,276.42
PAYROLL TAXES	
PAYROLL DEDUCTION	\$4,011,963.16
PCI MEDICAL INC SUPPLIES	\$1,950.49
PEARSON ASSESSMENTS SUPPLIES	\$1,375.13
PERFUTOUT COMPANIES	
OUTSIDE HIRE	\$78,900.00
PHILIPS HEALTHCARE SUPPLIES	\$3,505.90
PHYSIO-CONTROL, INC SUPPLIES	\$194.45
PIGOTT, INC. OFFICE PAVILION	
EQUIPMENT	\$6,148.87
PINE REST CHRISTIAN MENTAL HEALTH	
SERVICE	\$9,250.00
PINNACLE MGMT CONSULTING	
PROFESSIONAL FEES	\$750.00
PLATINUM CODE SUPPLIES	\$6,446.98
POLK COUNTY HEALTH SERVICES	
ADMIN EXPENSE	\$2,925.04
POLK COUNTY MEDICAL SOCIETY	
DUES	\$1,250.00
POLK COUNTY SHERIFF	
PAYROLL DEDUCTION	\$5,313.77
POSEY COMPANY, J T SUPPLIES	\$615.48
PRAVEEN C. PRASAD	
PROFESSIONAL FEES	\$2,500.00
PRAXAIR DISTRIBUTION INC SUPPLIES	\$354.06
PRECISION DYNAMICS CORP	
SUPPLIES	\$386.34
PREFERRED MEDICAL PRODUCTS	
SUPPLIES	\$289.57
PRESS GANEY ASSOCIATES INC	
ADMIN EXPENSE	\$48,989.12
PROACTIVE RESOURCES INC	
ADVERTISING	\$790.00
PROCTER & GAMBLE SUPPLIES	\$163.22
PROGRESSIVE BUSINESS PUBLICATION	
SUBSCRIPTIONS	\$198.00
PROGRESSIVE MEDICAL INC	
SUPPLIES	\$2,897.00
PROTEX CENTRAL CORP REPAIRS	\$572.00
QS 1 DATA SYSTEMS SERVICE	\$11,056.02
QUALITY MGT RESOURCES	
ADMIN EXPENSE	\$22,198.67
QUILL CORPORATION SUPPLIES	\$315.95
RACOM CORPORATION EQUIPMENT	\$282.00
RALPH SMITH INC SERVICE	\$1,805.00
RE-BATH TUB & SHOWER LINERS	
OUTSIDE HIRE	\$3,175.00
RECOVER CARE EQUIPMENT	\$8,268.00
REICHERT, INC SUPPLIES	\$717.93
REMEL INC SUPPLIES	\$8,153.83
RENAL TREATMENT CENTERS	
OUTSIDE HIRE	\$12,364.09
RENNCO LLC SUPPLIES	\$1,284.65
RESPIRONICS SUPPLIES	\$1,284.64
REYNOLDS AND REYNOLDS	
INSURANCE	\$2,778.96
RHINO GROUP EQUIPMENT	\$1,593.04
RICHARD ALLAN SCIENTIFIC	
SUPPLIES	\$107.83
RIST & ASSOCIATES INC SUPPLIES	\$760.00
RITTENHOUSE BOOK DISTRIBUTORS	
SUPPLIES	\$1,200.00
ROBERT MULDER MAINTENANCE	\$70.00
ROCHE DIAGNOSTIC CORP	
SUPPLIES	\$16,408.40
ROCHESTER ARMORED CAR CO	
SERVICE	\$498.39
ROTARY CLUB OF DM DUES	\$714.00
ROTO ROOTER SEWER SVC SERVICE	\$4,162.00
S&S LLC RENT	\$11,116.00
SANOFI PASTEUR INC SUPPLIES	\$2,064.44
SCALE-TRONIX, INC. SUPPLIES	\$2,335.25
SCIENTIFIC DEVICE LAB, INC SUPPLIES	\$43.86
SCRIPT PRO EQUIPMENT/SUPPLIES	\$37,787.69
SECRETARY OF STATE	
ADMIN EXPENSE	\$90.00
SEIU LOCAL 199 UNION DUES	\$6,822.37
SEKISUI DIAGNOSTICS LLC SUPPLIES	\$3,301.63
SENECA COMPANIES OUTSIDE HIRE	\$9,810.71
SHAMROCK SCIENTIFIC SPECIALTY	
SUPPLIES	\$23.42
SHARED MEDICAL SERVICES, INC	
OUTSIDE HIRE	\$14,465.00
SHEET METAL ENGINEERING SUPPLIES	\$49.50
SHIVE HATTERY INC	
OUTSIDE HIRE	\$216,059.04
SHOPLOWVISION.COM SUPPLIES	\$280.82
SIEMENS HEALTHCARE DIAGNOSTICS	
SUPPLIES	\$184,723.47
SIGNATURE HEALTHCARE	
OUTSIDE HIRE	\$191,488.38
SIGVARIS INC SUPPLIES	\$2,645.77
SIMPLEX GRINNELL INSPECTIONS	\$623.00
SKELETAL DYNAMICS LLC SUPPLIES	\$1,080.00
SLEEP INN ADMIN EXPENSE	\$2,947.84
SMILEMAKERS SUPPLIES	\$104.21
SMITH & NEPHEW ENDOSCOPY	
SUPPLIES	\$665.87
SMITH & NEPHEW INC SUPPLIES	\$42,409.20
SMITH PROMOTIONAL	

SUPPLIES/PAYROLL DEDUCT	\$10,508.96
SMITHS MEDICAL ASD INC	
SUPPLIES	\$4,512.09
SODEXO	
SERVICE/PAYROLL DEDUCT	\$639,047.64
SOFTCHOICE CORP SUPPLIES	\$10,278.20
SPECIALTY GRAPHICS SUPPLIES	\$6,180.47
SPECIALTY MEDICAL SYSTEMS	
SUPPLIES	\$10,430.00
SPEECH & LANGUAGE SVC	
OUTSIDE HIRE	\$16,825.00
SPIRAL BINDING COMPANY SUPPLIES	\$261.69
SPRINGER PEST SOLUTIONS SERVICE	\$63.00
SPRINT PRINT INC OUTSIDE HIRE	\$926.75
SST GROUP SUPPLIES	\$358.25
STABILITY BIOLOGICS SUPPLIES	\$275.00
STANDARD REGISTER SUPPLIES	\$3,090.78
STANDARD TEXTILE SUPPLIES	\$71.57
STATLAB MEDICAL PRODUCTS	
SUPPLIES	\$152.50
STERICYCLE SERVICE	\$10,425.55
STERIS CORP SUPPLIES	\$33,299.61
STRATEGIC AMERICA SERVICE	\$74,410.67
STRAUSS LOCK CO SERVICE	\$17,410.71
STRYKER ENDOSCOPY SUPPLIES	\$256,785.89
STRYKER INSTRUMENTS SUPPLIES	\$180,780.25
STRYKER ORTHOPAEDICS	
SUPPLIES	\$171,366.63
STRYKER SALES CORP SUPPLIES	\$67,338.98
STRYKER SUSTAINABILITY SOLUTIONS	
SUPPLIES	\$1,329.78
SUMMIT HEALTHCARE EQUIPMENT	\$2,060.00
SURGICAL ADVANTAGE SUPPLIES	\$871.79
SYNTHEIS SUPPLIES	\$9,328.99
SYSMEX AMERICA, INC SUPPLIES	\$4,159.00
SYSTEM ONE SUPPLIES	\$319.61
TALYST INC SERVICE	\$5,200.00
TELEFLEX MEDICAL SUPPLIES	\$1,627.69
TENNANT SALES & SVC CO	
SUPPLIES	\$3,105.49
THE ADVISORY BOARD COMPANY	
ADMIN EXPENSE	\$5,000.00
THE DES MOINES REGISTER	
SUBSCRIPTIONS	\$191.53
THE SHREDDER OUTSIDE HIRE	\$4,861.39
THERACOM INC SUPPLIES	\$5,800.50
THERMO FISHER SCIENTIFIC-ASHEVIL	
SUPPLIES	\$1,160.25
TIMOTHY OLSON	
PROFESSIONAL FEES	\$53,823.00
TOM WALSH CONSULTING, LLC	
OUTSIDE HIRE	\$3,510.00
TORNIER INC SUPPLIES	\$16,583.80
TRANS IOWA LC SERVICE	\$2,769.70
TRANSWORLD SYSTEMS INC	
ADMIN EXPENSE	\$85.05
TREASURER STATE OF IOWA	
ADMIN EXPENSE	\$51.00
TRI ANIM HEALTH SVCS SUPPLIES	\$29,345.03
TRILLIANT SURGICAL LTD SUPPLIES	\$3,502.00
TRIMED, INC SUPPLIES	\$4,607.00
TRIPLETT CO SUPPLIES	\$5,224.54
TYCO INTEGRATED SECURITY LLC	
SERVICE	\$859.32
TYPENEX MEDICAL LLC SUPPLIES	\$279.00
UI DIAGNOSTIC LABORATORIES	
SERVICES	\$2,846.96
UNITED PARCEL SERVICE FREIGHT	\$749.97
UNITED SHOCKWAVE SERVICES LTD	
PROFESSIONAL FEES	\$51,200.00
UNITED WAY OF CNTRL IA	
PAYROLL DEDUCTION	\$6,343.38
UNITY POINT DES MOINES SERVICE	\$1,283.75
UNITY POINT HEALTH SERVICE	\$1,237.14
UNITYPOINT AT HOME DM HME	
SERVICE	\$5,814.80
UNIV OF IOWA	
SVC/CONT EDU/OH/PROF FEES	\$149,584.84
UNIVERSAL HOSPITAL INC	
EQUIPMENT	\$5,815.28
US DEPT OF EDUCATION	
PAYROLL DEDUCTION	\$403.18
US DRUG TESTING LAB	
OUTSIDE HIRE	\$3,253.00
US IMPLANT SOLUTIONS, LLC	
SUPPLIES	\$591.00
US POSTAL SVC POSTAGE	\$18,000.00
UTAH MEDICAL PRODUCTS SUPPLIES	\$482.86
VARIETY- THE CHILDREN'S CHARITY	
PAYROLL DEDUCTION	\$566.65
VERIZON WIRELESS UTILITIES	\$17,266.70
VITAL SIGNS INC SUPPLIES	\$525.90
VITAL SUPPORT SYSTEMS	
OUTSIDE HIRE	\$24,334.65
WALMAN INSTRUMENT GROUP	
EQUIPMENT	\$8,618.73
WAL-MART ADMIN EXPENSE	\$59.80
WASTE CONNECTIONS INC	
OUTSIDE HIRE	\$11,506.96
WEIGHT WATCHERS	
PAYROLL DEDUCTION	\$5,394.00
WELLNESS COUNCILS OF AMERICA	

SERVICE	\$44.00
WELLS FARGO BANK	
BANKING FEES	\$13,095.49
WELLS FARGO CORP, MUNI & ESCROW	
INSURANCE/INTEREST/PRINCIPLE	\$3,342,138.01
WELLS FARGO TRUST	
BOND INTEREST	\$779,131.26
WELLS FARGO VISA P-CARDS	\$337,474.03
WEST BANK - PETTY CASH	
ADMIN EXPENSE	\$123.51
WEST MUSIC SERVICE	\$937.26
WILLIAM INGRAM	
PROFESSIONAL FEES	\$43,617.00
WILSON OPHTHALMIC CORP	
SUPPLIES	\$575.53
WRIGHT MEDICAL TECH INC	
SUPPLIES	\$28,303.43
Z & Z MEDICAL, INC SUPPLIES	\$440.79
ZEE MEDICAL, INC. SUPPLIES	\$111.70
ZEN STONE YOGA COMPANY	
OUTSIDE HIRE	\$685.00
ZIEGLER INC	
MAINTENANCE EXPENSE	\$15,464.38
ZIMMER KNEE CREATIONS SUPPLIES	\$3,175.00
ZIMMER MANUFACTURING CO	
SUPPLIES	\$19,516.25
ZOLL MEDICAL CORPORATION	
SUPPLIES	\$4,013.81
Grand Total	\$23,982,031.00

NOTICE OF PROBATE OF WILL,
OF APPOINTMENT OF EXECUTOR,
AND NOTICE TO CREDITORS

The Iowa District Court
Polk County

Probate No. ESPR068595

In the matter of the Estate of **Dominic F. Armentaro**, Deceased.
To All Persons Interested in the Estate of Dominic F. Armentaro, Deceased, who died on or about June 14, 2015:
You are hereby notified that on the July 2, 2015, the last will and testament of Dominic F. Armentaro, deceased, bearing date of the July 2, 2013, was admitted to probate in the above named court and that Charles Scavo and Paul Scavo were appointed executors of the estate. Any action to set aside the will must be brought in the district court of said county within the later to occur of four months from the date of the second publication of this notice or one month from the date of mailing of this notice to all heirs of the decedent and devisees under the will whose identities are reasonably ascertainable, or thereafter be forever barred.
Notice is further given that all persons indebted to the estate are requested to make immediate payment to the undersigned, and creditors having claims against the estate shall file them with the clerk of the above named district court, as provided by law, duly authenticated, for allowance, and unless so filed by the later to occur of four months from the second publication of this notice or one month from the date of mailing of this notice (unless otherwise allowed or paid) a claim is thereafter forever barred.
Dated this 6th day of July, 2015.
Charles Scavo and Paul Scavo
Executors of estate
209 29th St.
West Des Moines, IA 50265
Tom W. George, ICIS PIN No: *o Attorney ICIS Number TE*****
Attorney for executor
3737 Westown Parkway, Suite 2D
West Des Moines, IA 50266
Date of second publication: July 24, 2015.

OFFICIAL PUBLICATION
Des Moines, Iowa

The ESS Coordinating Committee held a meeting on June 10, 2015 at 10:00 AM
Members Present: Julie Haggerty, Sue Meyer, Nancy Booten, Frank Feilmeyer, Travis Case, Melissa Helmold and Diane Swoboda Peterson.
May 6, 2015 ESS Coordinating Committee Meeting Summary: Motion was approved unanimously
Notice of Intent to Award – Enterprise Storage Array: Motion was approved unanimously
Authorization and Agreement For Treasury Services – Bank of America: Motion was approved unanimously
Meeting was adjourned at 11:43 AM.
Complete Meeting summaries are posted at www.iowalandrecords.org.
Published in the Business Record on July 17, 2015.

OFFICIAL PUBLICATION
Des Moines, Iowa

The ESS Finance Subcommittee held a meeting on June 11, 2015 at 8:30 AM
Members Present: Marilyn Dopheide, Jolynn Goodchild, Arlene Schauf and Kathy Jurries.
Also present Kim Painter, Phil Dunshee, Lisa Long, Kati Gehringer and Cari Nordstrom.
May 5, 2015 and May 7, 2015 Finance Subcommittee Meeting Summaries: Motion was approved unanimously
Bills as specified in the BOA Accounts Payable Table were reviewed. Bills included: Enterprise Iowa, \$7,185.00; Bearence, \$20,518.96 and Bergan Paulsen & Co, \$645.00.
Bills as specified in the Fund 255 Accounts Payable Table were reviewed. Bills included: Enterprise Iowa, \$7,185.00 and \$2,739.22; Iowa County Records Association, \$54,933.34; CSI, \$5,869.00 and Lightedge, \$3,156.90.
Bills as specified in the Fund 823 Accounts Payable Table were reviewed. Bills included: Iowa County Records Association, \$2,229.70.
Approval of all Accounts Payable Tables: Motion was approved unanimously
April 2015 Financial Reports: Motion was approved unanimously
Meeting was adjourned at 9:36 AM
Complete meeting summaries are posted at www.iowalandrecords.org.
Published in the Business Record on July 17, 2015.

OFFICIAL PUBLICATION
Des Moines, Iowa

The ESS Finance Subcommittee held a meeting on June 30, 2015 at 8:30 AM
Members Present: Marilyn Dopheide, Jolynn Goodchild, Arlene Schauf and Deb Kupka. Also present Kim Painter, Phil Dunshee, Lisa Long, Kati Gehringer and Cari Nordstrom.
June 11, 2015 meeting summary: Motion was approved unanimously
Bills as specified in the Fund 255 Accounts Payable Table were reviewed. Bills included: Iowa County Records Association, \$4,504.19.
Fund 255 Accounts Payable Table: Motion was approved unanimously
Meeting was adjourned at 9:05 AM
Complete meeting summaries are posted at www.iowalandrecords.org.
Published in the Business Record on July 17, 2015.

To the Des Moines Business Community:

In 1985 a generation of Neumann grandsons assumed control of a 73-year-old construction company that had built many iconic structures in Des Moines and throughout Iowa. At that time, with the departure of the second generation, many in the business community thought that the company was doomed not to succeed.

Work hard, live the values of the founders and their sons and support the very talented work force that believed in us and our ability to lead.

Being young, full of energy and possessing a deep family passion for construction, we embarked on a task of rebuilding and revitalizing the company. Our strategy was simple. Work hard, live the values of the founders and their sons and support the very talented work force that believed in us and our ability to lead. After seven years the buyout of all stockholders was complete. We were off and running! As CEO, C. Arthur Wittmack and I, acting as COO, vowed that if we were ever fortunate enough to be in the position to pass on our company to another generation it would be done in a thoughtful and methodical manner. We started transitioning in 2003. Art became Chairman, I became President/CEO and our hire of 1984, Mike Simpson, became Executive VP/CFO and the first person to own stock outside the family.

By 2008 we had succeeded in recapitalizing the company to the point that it was decided the time had come to start the financial transition to the next generation. Over the next seven years Art would sell his stock to the valued employees we felt would take the company forward in the tradition of our founders.

As of December 31, 2015, Art's stock purchase will be complete and the next step in passing on our now 103-year-old company will begin. Prior to this event, as of July 1, 2015, Mike Simpson assumed the role of President and CEO and

Tom Walter became Executive Vice President. Supporting Mike and Tom are Chad Bunner, VP of Field Operations; John Neumann, VP of Risk Management and Ted Brackett, VP of Business Development. Most of this team has been in place for the past seven years. Along with this management team, we are pleased to recognize current shareholder Kevin Clemens and welcome Josh Braby, Matt Davis and Mark Thompson as new shareholders. This event is significant in the fact that this is not only the first time that non-family members head the company, but in that it also moves controlling ownership of Neumann Brothers outside the family.

We are leaving the company in excellent financial condition and hopefully, with an untarnished, proud legacy.

As I continue to act as Chairman, my role will be to oversee the continuation of our succession. Art has been elected Chairman Emeritus, thus completing our long-sought vision of a smooth transition. We are leaving the company in excellent financial condition and hopefully, with an untarnished, proud legacy. I have all the confidence one can muster in our employees and their leaders. Success will continue!

I have had many wonderful and challenging years in the construction industry and have enjoyed the friendship of many fine people. Thank you for your patronage and friendship.

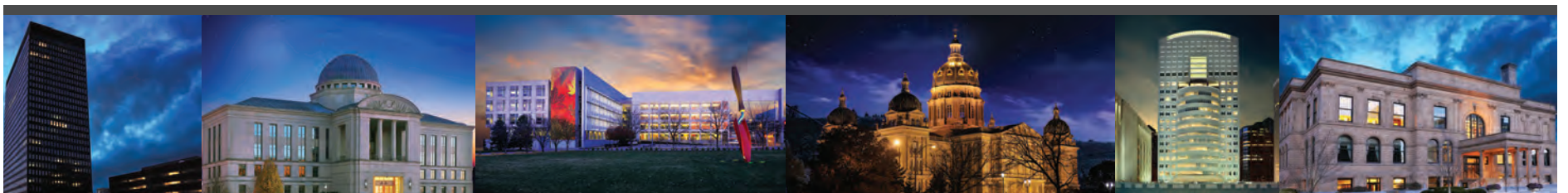
Best Regards,



Marshall "Bruz" G. Linn III
Chairman



1435 Ohio Street
Des Moines, IA 50314
P: 515.243.0156
F: 515.243.0165
neumannbros.com



The Standard of Excellence

Pre-Construction | Construction | Historic Restoration | Tenant Improvement | Design-Build | Industrial & Millwright | Construction Management