

A Supplement to **NJBIZ**

NJBIZ BEST PLACES to **WORK** in **NEW JERSEY 2013**

Companies that Rock!



Presented By:

MetLife
Solutions Group

Major Sponsor:

GIBBONS

Supporting Sponsors:



Lightpath

MetLife
Solutions Group



MetLife Solutions Group is dedicated to providing *you* with complete financial solutions to create a client-centric experience.

Through our vision, we are dually dedicated to providing highly specialized services and tools for our advisors.

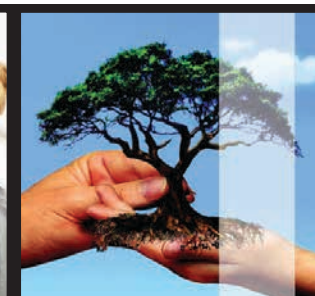
Dedication to being world-class in our industry, starts with being on the best team.

MetLife
Solutions Group



MetLife Solutions Group is proud to be recognized as one of the Best Places to Work in New Jersey.

www.MLSG.MetLife.com





PRESENTED BY:



Solutions Group

MAJOR SPONSOR:



SUPPORTING SPONSORS:



novonordisk

IN PARTNERSHIP WITH:



MAILING ADDRESS
220 Davidson Ave., Suite 302
Somerset, NJ 08873
(732) 246-7677

PUBLISHER

Thomas F. Curtin
DIRECTOR OF SALES

Mark Cialdella
ACCOUNT EXECUTIVE

Susan Alexander
DESIGN MANAGER

Andrew Ogilvie
PUBLICATION DESIGNER

Sara Siano
PRODUCTION

Kevin Paccione
EDITOR

Joel Berg
COPY EDITOR

Cheryl Sarfaty
CONTRIBUTING STAFF

Danielle Mack
EVENTS DIRECTOR

Wendy Berg
EVENTS MANAGER

Sarah Heckman
EVENTS COORDINATOR

Melissa Sullenberger
Published by Journal Publications Inc.

David A. Schankweiler, CEO

Lawrence M. Kluger, President

COVER DESIGN BY SARA SIANO

Table of Contents

| Large Companies | | | Small/Medium Companies (cont'd.) | | |
|-----------------|---|------|----------------------------------|---|------|
| RANK | NAME | PAGE | RANK | NAME | PAGE |
| 1- | Patton Boggs LLP | 10 | 12- | Dynamic Engineering Consultants, PC | 24 |
| 2- | Novo Nordisk, Inc. | 10 | 13- | Wilkin & Guttenplan PC | 24 |
| 3- | WithumSmith+Brown, CPAs | 11 | 14- | RegentAtlantic | 24 |
| 4- | Insperty | 11 | 15- | Angel Medical Systems, Inc. | 25 |
| 5- | Edward Jones | 11 | 16- | IT America Inc. | 25 |
| 6- | Wyndham Worldwide | 11 | 17- | Advisors Mortgage Group, LLC | 25 |
| 7- | Rothstein Kass | 12 | 18- | Lassus Wherley | 25 |
| 8- | MagnaCare | 12 | 19- | Condor Capital Management | 26 |
| 9- | Meridian Health | 12 | 10- | Institute for Professional Excellence in Coaching | 26 |
| 10- | The North Highland Company | 12 | 21- | Jennifer Connelly Public Relations | 26 |
| 11- | Lowenstein Sandler LLP | 13 | 22- | Amicus Therapeutics | 26 |
| 12- | Gibbons P.C. | 13 | 23- | Profit Sense Innovations, LLC | 27 |
| 13- | Crowe Horwath LLP | 13 | 24- | Wiss & Company, LLP | 27 |
| 14- | MetLife Solutions Group | 13 | 25- | Brinton Eaton, LLC | 27 |
| 15- | Maser Consulting P.A. | 14 | 26- | The Casey Group | 27 |
| 16- | Holy Name Medical Center | 14 | 27- | Boiling Springs Savings Bank | 28 |
| 17- | Investors Bank | 14 | 28- | Trinity Rehab | 28 |
| 18- | QuickChek Corporation | 14 | 29- | Comrise | 28 |
| 19- | Friedman LLP | 15 | 30- | Coyne Public Relations | 28 |
| 20- | Berkeley College | 15 | 31- | Hudson Horizons, Inc. | 30 |
| 21- | Jackson Lewis | 15 | 32- | Pashman Stein PC | 30 |
| 22- | BDO USA, LLP | 15 | 33- | R&J Public Relations | 30 |
| 23- | Enroute Computer Solutions, Inc. | 16 | 34- | Worldwide Supply | 30 |
| 24- | Esurance | 16 | 35- | Credit Union of New Jersey | 31 |
| 25- | Kessler Rehabilitation Center | 16 | 36- | Sobel & Co., LLC Certified Public Accountants | 31 |
| 26- | Heartland Payment Systems | 16 | 37- | AnnieMac Home Mortgage | 31 |
| 27- | Protiviti Inc. | 17 | 38- | Nisivoccia LLP | 31 |
| 28- | Trinitas Regional Medical Center | 17 | 39- | iCIMS, Inc. | 32 |
| 29- | Sundance Vacations | 17 | 40- | Untracht Early LLC | 32 |
| 30- | Institute of Electrical and Electronics Engineers | 17 | 41- | Brilliant Environmental Services, LLC | 32 |
| 31- | The Conti Group | 18 | 42- | XCEL Federal Credit Union | 32 |
| 32- | QANI | 18 | 43- | MWW | 33 |
| 33- | Affinity Federal Credit Union | 18 | 44- | Premier Healthcare Exchange, Inc. | 33 |
| 34- | Solix, Inc. | 18 | 45- | ECI Technology, Inc. | 33 |
| 35- | Realogy Holdings Corp. | 19 | 46- | Wayside Technology Group, Inc. | 33 |
| 36- | Marlabs Inc. | 19 | 47- | Emerald Financial Resources | 34 |
| 37- | Duane Morris LLP | 19 | 48- | Kessler Foundation | 34 |
| 38- | Citrin Cooperman | 19 | 49- | Daniella Koren Inc. | 34 |
| | | | 50- | SBS Group | 34 |
| | | | 51- | Compensation Solutions | 36 |
| | | | 52- | Marathon Data Systems, LLC | 36 |
| | | | 53- | NPS Pharmaceuticals | 36 |
| | | | 54- | CoWorx Staffing Services | 36 |
| | | | 55- | World Software Corporation | 38 |
| | | | 56- | AmeriHealth NJ | 38 |
| | | | 57- | Single Throw Internet Marketing | 38 |
| | | | 58- | Cowan, Guteski & Co., P.A. | 38 |
| | | | 59- | UL EduNeering | 38 |
| | | | 60- | The Hobart Group | 38 |
| | | | 61- | Morris Animal Inn | 38 |
| | | | 62- | Tele-Data Solutions | 38 |

Small/Medium Companies

How We Did It

The Best Places to Work in New Jersey is a celebration of jobs and the employers who provide them. The primary goal of the program is to help companies improve their workplace practices, which, in turn, helps them attract and retain the best employees, thus ensuring continued business success.

The Best Places to Work in New Jersey program is open to all publicly or privately held organizations and government entities, both for-profit and not-for-profit. To be eligible for consideration, companies must have a facility in New Jersey, be in business a minimum of one year, and

have at least 15 employees in the state.

After a company enters the program, it goes through a two-part survey process designed to pinpoint areas of strength and weakness. The assessment determines the eligibility for the Best Places to Work in New Jersey list. Best Companies Group manages the survey process and performs the evaluation of the collected data.

Three-fourths of each company's score comes from a confidential survey of employees that evaluates their workplace experience. In companies with less than 250 employees, all employees are asked to com-

plete the survey. A random selection of up to 400 employees is asked to complete the survey in companies with more than 250 employees. The remaining quarter of each company's score consists of an employer survey that collects information about its benefits, policies and practices.

The two assessments allow the experts at Best Companies Group to provide an in-depth analysis of the strengths of each company and opportunities that exist to build a better workplace.

Each company then receives an Employee Feedback Report and benchmark-

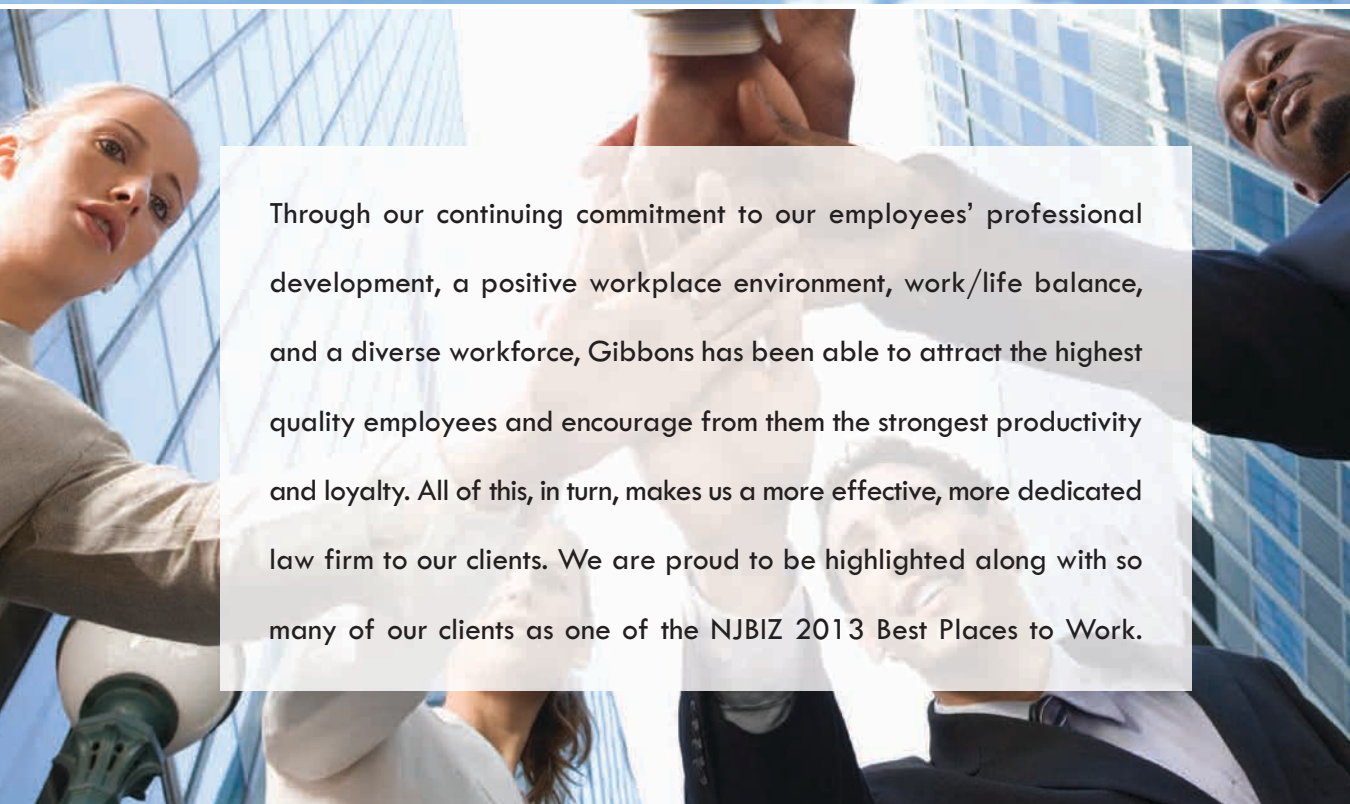
ing data that allows it to compare itself with both list-making companies and overall program participation.

The list of the Best Places to Work in New Jersey is broken down into two categories: 62 small/medium companies with 15 to 249 employees, and 38 large companies with 250 or more employees.

The companies on the following pages make up the 2013 Best Places to Work in New Jersey list. As you read the profiles, you'll see the creative ways in which these companies help their employees and their businesses succeed.

Large Companies ★ 2013 Best Places to Work in New Jersey

| RANK | COMPANY YEAR ESTABLISHED | ADDRESS PHONE EMAIL | U.S. EMPLOYEES | SENIOR EXECUTIVE(S) |
|------|--|---|----------------|---|
| 1 | Patton Boggs LLP 2006 | 1 Riverfront Plaza, 1037 Raymond Blvd., Suite 600 Newark, 07102 (973) 848-4208 kcox@pattonboggs.com | 960 | James E. Tyrrell Jr. |
| 2 | Novo Nordisk Inc. 1923 | 100 College Road West Princeton, 08540 (609) 919-7736 NCPE@novonordisk.com | 4,738 | Jerzy Gruhn |
| 3 | WithumSmith+Brown P.C. 1974 | 5 Vaughn Drive Princeton, 08540 (609) 520-1188 info@withum.com | 432 | William R. Hagaman Jr. |
| 4 | Insperty 2000 | 325 Columbia Turnpike, Suite 304 Florham Park, 07932-1212 (973) 822-4600 john.zilg@insperty.com | 2,100 | John Zilg |
| 5 | Edward Jones 1922 | 67 Main St. Flemington, 08822 (908) 788-5645 Robert.Lord@edwardjones.com | 36,619 | Robert Lord |
| 6 | Wyndham Worldwide 2006 | 22 Sylvan Way Parsippany, 07054 (973) 753-8372 michael.valentino@wyn.com | 21,419 | Stephen P. Holmes |
| 7 | Rothstein Kass 1959 | 4 Becker Farm Road Roseland, 07068 (973) 577-2296 nsaulnier@rkco.com | 1,080 | Steven Kass, Howard Altman |
| 8 | MagnaCare 1990 | 44 W. Gilbert St. Tinton Falls, 07701 (732) 667-8947 birlan@magnacare.com | 254 | Joseph Berardo Jr. |
| 9 | Meridian Health 1997 | 1430 Route 34 Neptune, 07753-6807 (732) 751-3590 sstring@meridianhealth.com | 9,817 | John K. Lloyd |
| 10 | The North Highland Co. 1992 | 103 Carnegie Center, Suite 300 Princeton, 08540 (484) 654-2057 martin.lupinetti@northhighland.com | 800 | Albert Rees |
| 11 | Lowenstein Sandler LLP 1961 | 65 Livingston Ave. Roseland, 07068 (973) 597-2454 Adelancey@lowenstein.com | 576 | Gary M. Wingens |
| 12 | Gibbons P.C. 1926 | 1 Gateway Center Newark, 07102-5310 (973) 596-4555 dafanador@gibbonslaw.com | 391 | Patrick C. Dunican Jr. |
| 13 | Crowe Horwath LLP 1942 | 354 Eisenhower Parkway, Suite 2050 Livingston, 07039-1025 (973) 422-4550 wendy.cama@crowehorwath.com | 2,489 | Wendy Cama |
| 14 | MetLife Solutions Group 2003 | 65 Jackson Drive, Suite 300 Cranford, 07016 (908) 497-2673 kesposito1@metlife.com | 299 | John Bucsek, Bellaria Jaramillo |
| 15 | Maser Consulting P.A. 1984 | 331 Newman Springs Road, Suite 203 Red Bank, 07701 (732) 383-1950 acolantuoni@maserconsulting.com | 305 | Richard M. Maser |
| 16 | Holy Name Medical Center 1925 | 718 Teaneck Road Teaneck, 07666 (201) 833-3247 rogers@holyname.org | 1,812 | Michael Maron |
| 17 | Investors Bank 1926 | 101 JFK Parkway Short Hills, 07078-2716 (973) 924-5105 dcama@myinvestorsbank.com | 1,087 | Kevin Cummings |
| 18 | QuickChek Corp. 1967 | 3 Old Highway 28 Whitehouse Station, 08889 (908) 534-7158 bgraczyk@qchek.com | 3,296 | Dean C. Durling |
| 19 | Friedman LLP 1924 | 100 Eagle Rock Ave., Suite 200 East Hanover, 07936 (973) 929-3686 nwyssocki@friedmanllp.com | 305 | Bruce A. Madnick |
| 20 | Berkeley College 1931 | 64 E. Midland Ave. Paramus, 07652 (201) 291-1111 kjc@berkeleycollege.edu | 1,126 | Kevin L. Luing |
| 21 | Jackson Lewis 1958 | 220 Headquarters Plaza, East Tower, 7th Floor Morristown, 07960 (973) 538-6890 cinor@jacksonlewis.com | 1,447 | Vincent A. Cino, Richard J. Cino |
| 22 | BDO USA LLP 1910 | 90 Woodbridge Center Drive, 4th Floor Woodbridge, 07095 (732) 750-0900 mgiamo@bdo.com | 3,276 | Mark Giamo, Robert Klein |
| 23 | Enroute Computer Solutions Inc. 1994 | 2511 Fire Road, Suite A4 Egg Harbor Township, 08234 (609) 569-9255 ochlanc@enroute-computer.com | 286 | Anthony Curatolo |
| 24 | Esurance 1999 | 49 Wireless Blvd., Suite 110 Hauppauge, NY 11788 (631) 404-4330 cfaircloth@esurance.com | 2,234 | Gary Tolman |
| 25 | Kessler Rehabilitation Center 1944 | 1050 Wall St. West, Suite 200 Lyndhurst, 07071 (201) 531-2500 amorales@selectmedical.com | 383 | Bill Anastassatos |



Through our continuing commitment to our employees' professional development, a positive workplace environment, work/life balance, and a diverse workforce, Gibbons has been able to attract the highest quality employees and encourage from them the strongest productivity and loyalty. All of this, in turn, makes us a more effective, more dedicated law firm to our clients. We are proud to be highlighted along with so many of our clients as one of the NJBIZ 2013 Best Places to Work.

One of the Best Places to Work
in New Jersey
NJBIZ, eight consecutive years

One of the Best Places to Work in New York
Crain's New York Business

One of the Best Places to Work
in Pennsylvania
Philadelphia Business Journal
Central Penn Business Journal

One of the 25 Best Medium-Size
Companies to Work for in America
*Society for Human Resources Management and
the Great Places to Work Institute*

2009 Catalyst Award for outstanding achieve-
ment in the advancement of women
in the workplace

Top 50 Law Firms for Women
Working Mother magazine
One of only eight law firms nationwide
to appear on this list every year it has
been published

Top 100 Firms for Diversity
Top 100 Firms for Women
MultiCultural Law magazine

Diversity Leader Award
Profiles in Diversity Journal

Newark

New York

Trenton

Philadelphia

Wilmington

| www.gibbonslaw.com



Large Companies ★ 2013 Best Places to Work in New Jersey

| RANK | COMPANY YEAR ESTABLISHED | ADDRESS PHONE EMAIL | U.S. EMPLOYEES | SENIOR EXECUTIVE(S) |
|------|--|--|----------------|------------------------------------|
| 26 | Heartland Payment Systems 1997 | 90 Nassau St. Princeton, 08542 (888) 798-3131 Michael.LaCosta@e-hps.com | 2,793 | Robert O. Carr |
| 27 | Protiviti Inc. 2002 | 2884 Sand Hill Road Menlo Park, CA 94025 (650) 234-6251 jenny.hollingworth@protiviti.com | 2,500 | Frederick Umbach |
| 28 | Trinitas Regional Medical Center 2000 | 225 Williamson St. Elizabeth, 07202 (908) 994-5728 gnacion@trinitas.org | 2,307 | Gary S. Horan |
| 29 | Sundance Vacations 1991 | 264 Highland Park Blvd. Wilkes Barre, PA 18702 (570) 820-0900 cbove@vacmail.com | 356 | John Dowd |
| 30 | Institute for Electrical and Electronics Engineers 1963 | 445 Hoes Lane Piscataway, 08742 (732) 562-6343 s.johnston@ieee.org | 1,090 | James Prendergast |
| 31 | The Conti Group 1906 | 2045 Lincoln Highway Edison, 08817 (732) 520-5003 jromanovskiy@conticorp.com | 587 | Kurt G. Conti |
| 32 | QANI 1992 | 30 Knightsbridge Road Piscataway, 08807 (732) 562-7838 yattalla@qualcareinc.com | 662 | Annette Catino |
| 33 | Affinity Federal Credit Union 1935 | 73 Mountainview Blvd. Basking Ridge, 07920 (908) 860-3769 mcirillo@affinityfcu.com | 333 | John T. Fenton |
| 34 | Solix Inc. 2000 | 30 Lanidex Plaza West Parsippany, 07054 (973) 581-5320 gene.king@solixinc.com | 383 | John C. Parry Jr. |
| 35 | Realogy Holdings Corp. 2005 | 1 Campus Drive Parsippany, 07054 (973) 407-7923 karen.brown@realogy.com | 9,461 | Richard A. Smith |
| 36 | Marlabs Inc. 1996 | 1 Corporate Place South Piscataway, 08854 (732) 694-1000 sanjeev.panicker@marlabs.com | 529 | Siby Vadakekkara |
| 37 | Duane Morris LLP 1904 | 1037 Raymond Blvd., Suite 1800 Newark, 07102 (215) 979-7350 Cflaxman@duanemorris.com | 1,399 | Walter J. Greenhalgh, Hersh Kozlov |
| 38 | Citrin Cooperman 1979 | 290 W. Mt. Pleasant Ave., Suite 3310 Livingston, 07039 (973) 218-0500 aserrano@citrincooperman.com | 457 | Alex Serrano, Edward C. Horton |



Finance sourcing team meeting—Princeton, USA

See why this is one of New Jersey's Best Places to Work.

Novo Nordisk is a world leader in diabetes treatment and care. Like our patients, we represent a wide range of backgrounds and abilities. We're united by our commitment to Changing Diabetes, and that makes life on our team incredibly rewarding.

Get to know more about our business and our mission. Feel our passion for working together to change patients' lives. Find out more at novonordisk-us.com.

life-changing careers



2013 Best Places to Work in New Jersey ★ Small/Medium Companies

| RANK | COMPANY YEAR ESTABLISHED | ADDRESS PHONE EMAIL | U.S. EMPLOYEES | SENIOR EXECUTIVE(S) |
|------|--|--|-------------------|--|
| 1 | eTeam Inc. 1999 | 1001 Durham Ave., Suite 201 South Plainfield, 07080 (732) 213-0302 bthakur@eteaminc.com | 21 | Ben Thakur |
| 2 | oXya 1998 | 15 Exchange Place, Suite 1010 Jersey City, 07302 (347) 989-7833 lduboullay@oxya.com | 17 | Melchior du Boullay |
| 3 | Red Nucleus 2007 | 100 American Metro Blvd., Suite 109 Hamilton, 08619 (609) 475-1107 tbudge@red-nucleus.com | 49 | Ian Kelly |
| 4 | Kreinces Rollins & Shanker LLC 2005 | 365 W. Passaic St., Suite 585 Rochelle Park, 07662 (201) 655-7411 BKreinces@krscpas.com | 16 | Brad M. Kreinces, Maria T Rollins, Gerald A. Shanker |
| 5 | JBL Electric 1993 | 3001 S. Clinton Ave. South Plainfield, 07080 (908) 462-0093 modonovan@jblelectric.com | 30 | James B. Leary |
| 6 | Rue Insurance 1917 | 3812 Quakerbridge Road Hamilton, 08619 (609) 586-7474 info@rueinsurance.com | 70 | William M. Rue, William M. Rue Jr., Elizabeth A. Allen |
| 7 | Pharmalink Consulting 1988 | 51 JFK Parkway Short Hills, 07078 (973) 921-5207 jenniferl@pharmalinkconsulting.com | 40 | Stephen Loughrey |
| 8 | Sharpe Kawam Carmosino & Co. LLC 1982 | 1 Mars Court, Suite 1 Boonton Township, 07005 (973) 335-1112 kdonaway@skcandco.com | 26 | Mitchell Sharpe |
| 9 | RAMPS International Inc. 2007 | 1199 Amboy Ave., Suite 2F Edison, 08837 (732) 447-2300 RNunugonda@rampscorp.com | 90 | Ram Nunugonda |
| 10 | Princetel Inc. 2000 | 2560 E. State St. Extention Hamilton, 08619 (609) 895-9890 louisviolante@princetel.com | 30 | Barry Zhang |
| 11 | ApTask 2010 | 379 Thornall St., 2nd Floor Edison, 08837 (732) 355-8094 jbutler@aptask.com | 15 | Joseph P. Butler |
| 12 | Dynamic Engineering Consultants P.C. 1994 | 1904 Main St. Lake Como, 07023 (732) 974-0198 jrcohn@dynamicec.com | 37 | Jeffrey D. Spalt, John A. Palus, Joseph G. Jaworski, Brett W. Skapinetz, Mark A. Whitaker |
| 13 | Wilkin & Guttenplan P.C. 1983 | 1200 Tices Lane East Brunswick, 08816 (732) 846-3000 jzirith@wgcpas.com | 71 | Edward I. Guttenplan |
| 14 | RegentAtlantic Capital LLC 1982 | 1200 Mount Kemble Ave., 3rd Floor Morristown, 07960 (973) 425-8420 ababcock@regentatlantic.com | 40 | Christopher J. Cordaro |
| 15 | Angel Medical Systems Inc. 2001 | 1163 Shrewsbury Ave., Suite E Shrewsbury, 07702 (732) 542-5551 lhancock@angel-med.com | 59 | David R. Fischell |
| 16 | IT America Inc. 2004 | 100 Metroplex Drive, Suite 207 Edison, 08817 (732) 985-5100 praveen@itamerica.com | 170 | Praveen K. Thadakamalla |
| 17 | Advisors Mortgage Group LLC 1999 | 5114 Route 33 Wall, 07727 (732) 292-3133 LMcCann@AdvisorsMortgage.com | 175 | Steven Meyer |
| 18 | Lassus Wherley 1985 | 1 Academy St. New Providence, 07974 (908) 464-0102 Deborah@lassuswherley.com | 23 | Clare E. Wherley |
| 19 | Condor Capital Management 1988 | 1973 Washington Valley Road Martinsville, 08836 (732) 356-7323 info@condorcapital.com | 16 | Ken Schapiro |
| 20 | Institute for Professional Excellence in Coaching 1999 | 149 Avenue at the Common, Suite 202 Shrewsbury, 07702 (732) 982-8155 cgardner@iPECcoaching.com | 30 | D. Luke Iorio |
| 21 | Jennifer Connelly Public Relations 2003 | 1 Gatehall Drive, Suite 107 Parsippany, 07054 (973) 850-7300 jconnelly@jcprinc.com | 38 | Jennifer Connelly |

Small/Medium Companies ★ 2013 Best Places to Work in New Jersey

| RANK | COMPANY YEAR ESTABLISHED | ADDRESS PHONE EMAIL | U.S. EMPLOYEES | SENIOR EXECUTIVE(S) |
|------|---|--|-------------------|--|
| 22 | Amicus Therapeutics Inc. 2002 | 1 Cedarbrook Drive Cranbury, 08512 (609) 662-2076 sverdino@amicusrx.com | 115 | John F. Crowley |
| 23 | Profit Sense Innovations LLC 2009 | 26 Journal Square, Suite 1501 Jersey City, 07306 (877) 549-7526 mchristian@profitsi.com | 30 | Jerry R. Khemraj |
| 24 | Wiss & Co. LLP 1969 | 354 Eisenhower Parkway Livingston, 07039 (973) 994-9400 lcalick@wiss.com | 180 | Paul L. Peterson |
| 25 | Brinton Eaton LLC 1988 | 1 Giralda Farms, Suite 130 Madison, 07940 (973) 984-3352 asheehy@brintoneaton.com | 19 | Robert J. DiQuollo |
| 26 | The Casey Group Inc. 1989 | 77 E. Halsey Road Parsippany, 07054 (973) 299-4755 kmanghisi@thecaseygroup.com | 40 | Richard P. Casey |
| 27 | Boiling Springs Savings Bank 1939 | 25 Orient Way Rutherford, 07070-1799 (201) 507-3169 ajones@bssbank.com | 184 | Robert E. Stillwell |
| 28 | Trinity Rehab 2001 | 558 Route 35 Redbank, 07701 (732) 219-5700 tonya@trinity-rehab.com | 34 | Michael Rizkalla |
| 29 | Comrise 1984 | 1301 Route 36, Concord Center Building 2, Suite 9 Hazlet, 07730 (732) 739-2330 steven@comrise.com | 42 | George Liou |
| 30 | Coyne Public Relations 1991 | 5 Wood Hollow Road, 1st Floor Parsippany, 07054 (973) 588-2003 jgeraghty@coynepr.com | 112 | Thomas F. Coyne |
| 31 | Hudson Horizons Inc. 2003 | 299 Market St., Suite 350 Saddle Brook, 07663 (201) 710-7130 jmatta@hudsonhorizons.com | 22 | Daryl H. Bryant |
| 32 | Pashman Stein P.C. 1995 | Court Plaza South, 21 Main St., Suite 100 Hackensack, 07601 (201) 488-8200 mstein@pashmanstein.com | 42 | Michael S. Stein |
| 33 | R&J Public Relations 1986 | 1140 Route 22 East, Suite 200 Bridgewater, 08807 (908) 895-0789 jlonsdorf@randjpr.com | 16 | John P. Lonsdorf, Scott Marioni |
| 34 | Worldwide Supply 1994 | 1 Park Drive Franklin, 07416 (973) 823-6412 vdeblois@worldwidesupply.net | 50 | Jay VanOrden |
| 35 | Credit Union of New Jersey 1943 | 1301 Parkway Ave. Ewing, 08628 (609) 323-2019 lbannach@cunj.org | 96 | Andrew L. Jaeger |
| 36 | Sobel & Co. LLC CPAs 1956 | 293 Eisenhower Parkway, Suite 290 Livingston, 07039 (973) 994-9494 molly.lockwood@sobel-cpa.com | 84 | Alan D. Sobel |
| 37 | AnnieMac Home Mortgage 2011 | 700 E. Gate Drive, Suite 400 Mount Laurel, 08054 (856) 291-3131 cbrinkert@annie-mac.com | 234 | Joseph Panebianco |
| 38 | Nisivoccia LLP 1970 | 200 Valley Road, Suite 300 Mount Arlington, 07856 (973) 328-1825 svanhouten@nisivoccia.com | 83 | Timothy Mehaffey |
| 39 | iCIMS Inc. 1999 | 90 Matawan Road, Parkway 120 Matawan, 07747 (732) 847-8174 kendra.oconnor@icims.com | 235 | Colin Day |
| 40 | Untracht Early LLC 1993 | 325 Columbia Turnpike, Suite 202 Florham Park, 07932 (973) 805-7145 lgaal@untracht.com | 100 | Tracey B. Early |
| 41 | Brilliant Environmental Services LLC 2006 | 1A Executive Drive Toms River, 08755 (732) 818-3380 Marketing@BrilliantEnvironmental.com | 20 | Philip I. Brilliant |
| 42 | XCEL Federal Credit Union 1964 | 1460 Broad St. Bloomfield, 07003-3014 (201) 499-1656 TomQuigley@XCELfcu.org | 40 | Linda McFadden |

2013 Best Places to Work in New Jersey ★ Small/Medium Companies

| RANK | COMPANY YEAR ESTABLISHED | ADDRESS PHONE EMAIL | U.S. EMPLOYEES | SENIOR EXECUTIVE(S) |
|------|---|---|-------------------|--|
| 43 | MWW 1986 | 1 Meadowlands Plaza, 6th Floor East Rutherford, 07073 (201) 507-9500 mkempner@mww.com | 186 | Michael W. Kempner |
| 44 | Premier Healthcare Exchange Inc. 2001 | 2 Crossroads Drive Bedminster, 07921 (908) 340-6853 jnuesch@phx-online.com | 183 | Todd Roberti |
| 45 | ECI Technology Inc. 1987 | 60 Gordon Drive Totowa, 07512 (973) 890-1114 drabinovitch@ecitechnology.com | 101 | Marianna Rabinovitch |
| 46 | Wayside Technology Group Inc. 1982 | 1157 Shrewsbury Ave. Shrewsbury, 07702 (732) 389-0932 richard.bevis@waysidetechology.com | 105 | Simon F. Nynens |
| 47 | Emerald Financial Resources 1998 | 1140 Route 22 East, Suite 202 Bridgewater, 08807 (908) 252-2376 jtarbell@financialguide.com | 20 | Michael Vesuvio |
| 48 | Kessler Foundation 1985 | 300 Executive Drive, Suite 70 West Orange, 07052 (973) 324-0520 lwactlar@kesslerfoundation.org | 94 | Rodger L. DeRose |
| 49 | Daniella Koren Inc. 1997 | 155 Passaic Ave., Suite 360 Fairfield, 07004 (973) 882-0900 bbernstein@dkidirect.com | 25 | Daniella Koren |
| 50 | SBS Group 1986 | 105 Fieldcrest Ave., Suite 404 Edison, 08837 (732) 476-5909 kkohlhepp@sbsgroupusa.com | 47 | James R. Bowman Jr. |
| 51 | Compensation Solutions Inc. 1997 | 500 Valley Road, Suite 201 Wayne, 07470 (201) 405-1115 swayne@csihro.com | 42 | Susan Marie Molosh |
| 52 | Marathon Data Systems LLC 1984 | 4810 Belmar Blvd. Wall Township, 07753 (732) 686-7815 nicole@marathondata.com | 101 | Christopher Sullens |
| 53 | NPS Pharmaceuticals 1986 | 550 Hills Drive, 3rd Floor Bedminster, 07921 (908) 450-5317 jbrodsky@npsp.com | 115 | Francois Nader |
| 54 | CoWorx Staffing Services LLC 1974 | 1375 Plainfield Ave. Watchung, 07069 (800) 754-7000 michael.epstein@coworxstaffing.com | 202 | Michael R. Epstein |
| 55 | World Software Corp. 1988 | 266 Harristown Road, Suite 201 Glen Rock, 07452 (201) 444-3228 sales@worldox.com | 26 | Thomas Burke |
| 56 | AmeriHealth NJ 1994 | 259 Prospect Plains Road, Building M Cranbury, 08512-3706 (609) 662-2454 jill.roman@amerihealth.com | 162 | Judith L. Roman |
| 57 | Single Throw Internet Marketing 2001 | 1800 Route 34, Building 3, Suite 303 Wall, 07719 (888) 920-9778 marketing@singlethrow.com | 28 | Larry Bailin |
| 58 | Cowan Guntjeski & Co. P.A. 1982 | 40 Bey Lea Road, Suite A101 Toms River, 08753 (732) 349-6880 kfiller@cowanguntjeski.com | 66 | Donald A. Cowan |
| 59 | UL EduNeering 1981 | 202 Carnegie Center, Suite 301 Princeton, 08540 (609) 627-5391 jefferson.barr@ul.com | 102 | Lynne Budnovitch |
| 60 | The Hobart Group 2003 | 240 Main St. Little Falls, 07424 (908) 470-1780 spatton@thehobartgroup.com | 100 | Lisa B. Bair |
| 61 | Morris Animal Inn 1960 | 120 Sand Spring Road Morristown, 07960 (973) 539-0377 joanne@morrisanimalinn.com | 79 | Walter & Marianne Morris, Joanne Morris |
| 62 | Tele-Data Solutions 1982 | 1767 Route 22 West Union, 07083 (908) 851-0444 dfinaldi@tele-datasolutions.com | 15 | Damon Finaldi, Vincent Finaldi |

#1 LARGE COMPANY

Patton Boggs LLP

Newark, Essex County



PATTON BOGGS LLP

The holiday cup truly runneth over at the Newark office of law firm Patton Boggs. The office generates enough merriment to fill two parties.

The firm throws one party for the children and guests of staff members, complete with visits by Santa Claus, Mrs. Claus and an entourage of elves. The second party, open to spouses and partners, is held at a local country club.

The generous helping of holiday cheer is one of the reasons that the firm's New Jersey employees often remark that the office is more than just a place to work. It's also a place to call home. Every staff member is treated as a member of a tight-knit family that offers protection, encouragement and appreciation.

Social ties are reinforced through much-anticipated events, such as "Third Thursdays," a company-sponsored cocktail party held monthly. The themed parties offer great food and drinks, as well as a chance for employees at all levels to mingle. At times when they're in a more contemplative mood, staff members can relax and bond during on-site yoga sessions.

Few New Jersey residents could relax after Superstorm Sandy. But employees at Patton Boggs had one less thing to fret about after the storm passed. The law firm continued paying its employees even though its office building remained closed for two weeks.

Year-round, the firm helps employees carve out time for family, with extra half days off in the summer and programs that help people balance their work and personal lives.

Bonus programs, meanwhile, include "Spot Awards," which recognize staff members who go above and beyond their job descriptions. The awards, worth up to \$2,000, come on top of that annual year-end bonus that employees receive.

Community service is one area where every staff member strives to go above and beyond. Attorneys are required to complete at least 100 pro bono hours every year, while all staff members look for ways to address significant problems in the community. Recent community service projects have tackled issues such as hunger, homelessness and the environment.



#2 LARGE COMPANY

Novo Nordisk, Inc.

Princeton, Mercer County



In late August, 20 employees of Novo Nordisk underscored their company's commitment to community service. They traveled to an Indian reservation in South Dakota, where they took part in tribal activities and learned about the critical challenges facing Native Americans. Founded in 1923, Novo Nordisk is the U.S. arm of the Danish company of the same name. It provides a portfolio of insulin treatments and delivery devices that respond to each stage of diabetes.



Providing the communication solutions that light the way.

Where do you want to take your business?

Every communications solution we build begins with listening to what you want to achieve and pushing the limits to make it possible. We are here to help you focus on your business goals and provide the innovative services and expertise that light the way. Tell us where you want to go, we are ready to take you there.

We are your Lightpath.



DATA. INTERNET. VOICE. VIDEO.

To Learn More Visit GoLightpath.com or call 1-877-Lightpath

#3 LARGE COMPANY

WithumSmith+Brown, CPAs

Princeton, Mercer County



WithumSmith+Brown rolls out the red carpet for its employees. Every year the accounting firm sponsors production of a video by employees. The effort is an opportunity to relieve stress and have fun. Other stress-busters at the firm include flexible scheduling, an annual week off for community service and special events during tax season, such as bowling parties and dizzy-bat races. Founded in 1974, WithumSmith+Brown has offices in New Jersey, Colorado, Florida, New York, Maryland and Pennsylvania.



#4 LARGE COMPANY

Insperty

Florham Park, Morris County



If you work for Insperty, you don't need an excuse or special occasion to get out of the office. The company encourages its employees to take breaks just to relieve stress, whether the destination is a restaurant, a coffee shop, or someplace serving up snacks. Based in Texas, Insperty offers an array of HR and business-performance solutions for small and medium-sized companies. The company has a sales office in New Jersey. Bonuses are awarded to employees on a monthly, quarterly and annual basis.



#5 LARGE COMPANY

Edward Jones

Flemington, Hunterdon County



The people who work for Edward Jones enjoy a great deal of freedom in setting their own hours and running their branch offices. But when they need support from the investment advisory firm, as they did in the weeks following Superstorm Sandy, they get it. Edward Jones pitched in to help numerous New Jersey employees whose lives were upended by the storm. Based in St. Louis, Edward Jones taps a network of branch offices to provide financial services to individual investors throughout the United States.



#6 LARGE COMPANY

Wyndham Worldwide

Parsippany, Morris County



The employees of Wyndham Worldwide get a vacation just like the rest of us. But thanks to the company's WynEscapes program, they also get something extra: discounts to stay in some of the world's finest resort properties. Founded in 2006, Wyndham Worldwide is a global hospitality company with vacation properties in prime locations around the world. When they're not traveling the globe, Wyndham employees can take advantage of an on-site fitness facility and other amenities conducive to healthier living.



BE IN A POSITION OF STRENGTHSM



FOR ALMOST 40 YEARS, OUR PEOPLE HAVE BEEN THE ROOT OF OUR SUCCESS.



At WithumSmith+Brown, we have always believed that our success begins with our people. Since its inception in 1974, our Firm has continued its commitment to build a place where staff can thrive professionally—and personally.

With continuous professional development, a strong work-life balance, and a fun-loving atmosphere, we've attracted some of the best and the brightest in the industry. They remain with us year after year, providing clients with their unparalleled experience and exceptional client service.

We are honored to work with the great people who have made WS+B one of NJ's Best Places to Work, nine years in a row. And, we're privileged to be among the outstanding companies who share this prestigious distinction.

To learn more about our Firm or career opportunities, visit www.withum.com

WE THANK OUR STAFF FOR MAKING WS+B ONE OF NJ'S BEST PLACES TO WORK.



WithumSmith+Brown, PC
 Certified Public Accountants and Consultants
 New Jersey. New York. Pennsylvania. Maryland. Florida. Colorado



#7 LARGE COMPANY

Rothstein Kass
Roseland, Essex County



New employees at Rothstein Kass must feel like kids in a candy shop. The accounting firm serves up programs and benefits touching everything from health and wellness to work-life balance and career development. Topping them off is a spirit of fun that comes out in full force during the busy tax season, which is marked by a series of tension-busting events and games. In addition to audit and tax services, the firm provides strategic business counseling, risk-management consulting and other services.

Rothstein Kass

#8 LARGE COMPANY

MagnaCare
Tinton Falls, Monmouth County



Stick out your neck at MagnaCare, and you just might wind up with a 4-foot-tall stuffed giraffe. That's the prize—along with a \$500 gift card—bestowed by the company on employees who do good things that get noticed. MagnaCare offers self-insurance options to employers in New Jersey and New York. In addition, the company provides access to a broad provider network, predictive modeling analyses, member outreach programs and integrated solutions that include full plan management services.

MAGNACARESM

#9 LARGE COMPANY

Meridian Health
Neptune, Monmouth County



An annual volleyball tournament throws together teams representing either heart health or breast health. Both sides come out winners during the fundraising event held every September by employees of Meridian Health. The day-long event, which raises money for a variety of organizations, also includes a barbecue and DJ. Founded in 1997, Meridian is a family of organizations, including Jersey Shore University Medical Center and the K. Hovnanian Children's Hospital.



#10 LARGE COMPANY

The North Highland Company
Princeton, Mercer County



The best teams hire coaches to ensure their players are at their peak. It's a formula that works in sports, and it's being applied to business by The North Highland Company. The consulting firm makes available career coaches who help employees update their personal development plans. If employee goals require additional training, it may be available through North Highland University, a suite of courses covering a variety of topics. Based in Atlanta, North Highland has offices around the world.



MagnaCare is proud to be voted as one of New Jersey's Best Places to Work. We work hard for our team and our team works hard for New Jersey's self-insured employers.

MAGNACARESM
Self-Insured Health Plans

877.624.6220

www.magnacare.com
www.blog.magnacare.com
www.facebook.com/magnacare



#11 LARGE COMPANY

Lowenstein Sandler LLP
Roseland, Essex County



Everyone gets tired of talking about work, even at great places to work. Employees of Lowenstein Sandler have other common threads to draw them together. Last year, the law firm started affinity groups to promote relationships and reduce stress among employees who share similar interests, such as cooking, dining, fitness and gardening. There's even a group for parents of toddlers. Founded in 1961, Lowenstein practices in areas such as bankruptcy, litigation, real estate, venture capital and intellectual property.

Lowenstein Sandler

#12 LARGE COMPANY

Gibbons P.C.
Newark, Essex County



You don't have to look far to find the future leaders of Gibbons. They're enrolled in the law firm's leadership academy, designed to help attorneys burnish the skills they'll need to advance their careers. The academy's programs range from law-firm fundamentals to an intensive 10-week course on building a legal practice. The firm also offers educational programs tailored to legal issues, including hot topics in transactional law and litigation. Founded in 1926, Gibbons has additional offices in New York, Pennsylvania and Delaware.

GIBBONS

#13 LARGE COMPANY

Crowe Horwath LLP
Livingston, Essex County



If you want to know what's working in the workplace, ask the employees. Every year, Crowe Horwath surveys its employees to determine what issues and concerns are on their minds. The results gather no dust because they are put to use by firm leaders to create an action plan for change. Crowe's employees have additional outlets to express themselves, including annual meetings and an advisory council of young partners who provide insight to leaders in the C-suite. Founded in 1942, Crowe is an accounting and consulting firm.

 Crowe Horwath.

#14 LARGE COMPANY

MetLife Solutions Group
Cranford, Union County



If you'd rather be fishing, you might want to apply for a job at MetLife Solutions Group. Team outings for company employees include trips to local fishing holes, where a relaxing time is had by all. Back at the office, employees enjoy monthly birthday celebrations and the occasional happy hour. Before major holidays, the company shuts down early, giving employees a head start on celebrating with their families. MetLife Solutions offers a range of financial solutions to individuals and businesses.

MetLife
Solutions Group

EXCELLENCE. GROWTH. OPPORTUNITY.



At Lowenstein Sandler — We're all about you.™

Lowenstein Sandler LLP thanks all of our attorneys and staff for their contributions in making the firm one of the "Best Places to Work in New Jersey" for 2013.

www.lowenstein.com

New York
1251 Avenue of the Americas
New York, NY 10020
212 262 6700

Palo Alto
390 Lytton Avenue
Palo Alto, CA 94301
650 433 5800

Roseland
65 Livingston Avenue
Roseland, NJ 07068
973 597 2500

Lowenstein Sandler

© 2013 Lowenstein Sandler LLP.

#15 LARGE COMPANY

Maser Consulting P.A.
Red Bank, Monmouth County



Every summer, the employees of Maser Consulting enjoy something extravagant. The engineering firm sponsors a cruise around Manhattan, typically on a Friday evening. The annual event is an employee favorite, despite stiff competition from other fun outings. Maser sponsors an annual golf outing and lunchtime volleyball matches for employees. Founded in 1984, Maser serves public and private-sector clients throughout the Northeast. The firm outlines a clear path for employees at every level to become shareholders.



#16 LARGE COMPANY

Holy Name Medical Center
Teaneck, Bergen County



There are company gyms, and then there is the medically based fitness center at Holy Name Medical Center. In addition to traditional gym amenities, the center offers sports training, spa services, weight management and programs geared for employees with children. Founded in 1925, Holy Name is an acute-care hospital that provides a broad spectrum of inpatient, ambulatory, home-health and community services. Holy Name also operates schools training registered nurses and licensed practical nurses.



#17 LARGE COMPANY

Investors Bank
Short Hills, Essex County



At Investors Bank, the commitment to community service is clear to new employees from day one—or, to be precise, day three. The bank has developed a three-day onboarding program for new hires. On the third day, they head out to volunteer at a soup kitchen in Morristown. Every Wednesday, meanwhile, a group of a dozen employees works at a soup kitchen in Newark. Founded in 1925, Investors has more than \$11 billion in assets and operates more than 85 branches in New Jersey and New York.



#18 LARGE COMPANY

QuickChek Corporation
Whitehouse Station, Hunterdon County




A fancy dinner wasn't enough of a "thank you" from QuickChek. So, the company set aside an entire weekend for employee recognition. The weekend of festivities, paid for in full by QuickChek, is held every November to honor employees for their hard work and accomplishments over the previous year. The company also picks up the tab for celebrations of employee birthdays and service anniversaries. Founded in 1967, QuickChek operates 132 convenience stores and 12 pharmacies in northern New Jersey and southern New York.




**Intelligence.
Dignity.
Respect.
Ambition.**

*We instill these traits in our students.
We expect them from our associates.*



Berkeley College is once again proud to be one of the Best Places to Work in NJ.



Berkeley College
Changing lives for over 80 years™

BerkeleyCollege.edu • info@BerkeleyCollege.edu

Locations in New York, New Jersey, and Online



Our Employees Connect Brilliant Minds Every Day

We at IEEE realize how fortunate we are to work with the best and brightest—both our employees and our members. This is why we give back to our employees with generous support and tangible rewards.

Our professional family is on a mission to advance technology for humanity, and we do so from one of the best places to work in New Jersey.



IEEE
Advancing Technology for Humanity

Come Join Us! www.ieee.org



#19 LARGE COMPANY

Friedman LLP

East Hanover, Morris County



At the end of a busy tax season, you might feel a bit knocked around. Employees of Friedman get to knock back. The accounting firm sports volleyball courts at several of its offices, and the courts host pitched matches every spring. Founded in 1924, Friedman serves the accounting, tax and business consulting needs of public and private companies. The firm has established a robust program for identifying and developing employees who show potential to become partners.



#20 LARGE COMPANY

Berkeley College

Paramus, Bergen County



Sometimes an established concept just needs a new twist. Enter the “Biggest Winner” contest at Berkeley College. The contest encourages staff members to exercise and eat right. Employees get a leg up thanks to on-site exercise classes. At last year’s wellness fair, meanwhile, employees got the chance to win either a treadmill, a stationary bike, an elliptical machine or a mountain bike. Berkeley College is a privately owned, four-year institution that awards both bachelor’s and associate degrees.



#21 LARGE COMPANY

Jackson Lewis

Morristown, Morris County



There’s nothing like a healthy start to the week. And that’s exactly what the employees of Jackson Lewis get. Every Monday morning, the law firm serves up a helping of fresh fruit. But the key to life is balance. And to ensure employees get their share of comfort food, the law firm also hosts regular pizza lunches. Founded in 1958, Jackson Lewis specializes in employment law. Many of its attorneys started as summer clerks who eventually entered the ranks of full-time associates after graduation from law school.



#22 LARGE COMPANY

BDO USA, LLP

Woodbridge, Middlesex County



Flexibility is truly flexible at BDO USA. Recently, the firm adopted a strategy called BDO Flex that allows employees at every level to achieve the work-life balance that best fits their needs. For some, balance may be achieved through small, daily changes in how, where or when they work. Others might need extended time off or a lasting change in schedule. Founded in 1910, BDO is a professional services firm providing assurance, tax, financial advisory and consulting services to publicly traded and privately held companies.



Best Workplace. Best Team. Best Care.

Meridian Health celebrates being recognized as one of the “Best Places to Work in New Jersey” for nine consecutive years!

We are honored to be one of FORTUNE’s “100 Best Companies to Work For” for four years in a row!

To find out why Meridian Health is among the top employers in New Jersey, please visit our website at

www.meridianhealth.com

Outstanding Employer
NJBA Awards for Excellence Winner

We are an Equal Opportunity Employer.

From FORTUNE® Magazine, February 4, 2013 © 2013 Time Inc. FORTUNE is a registered trademark of Time Inc. and is used under license. FORTUNE and Time Inc. are not affiliated with, and do not endorse products or services of Meridian Health.

#23 LARGE COMPANY

Enroute Computer Solutions, Inc.

Egg Harbor Township, Atlantic County



Rising medical costs eat into the budgets even of people with health insurance. To alleviate the sting, Enroute Computer Solutions recently began funding health reimbursement accounts that employees can use for co-pays, prescription costs and other medical expenses. The company also takes care of pets. Enroute's employees can pick from a range of options for discounted veterinary insurance. Founded in 1994, Enroute provides technology solutions to government and industry.



#24 LARGE COMPANY

Esurance

Basking Ridge, Somerset County



Who wants a pen or a calculator when you can get a miniature Volkswagen Bug? The tiny cars are the gifts handed out to employees of Esurance on their annual service anniversaries. Each year they get a different color vehicle, along with a personally signed letter of thanks from the CEO. Founded in 1999 and based in Hauppauge, N.Y., Esurance sells insurance for automobiles, motorcycles, homes and rental units. The office in Basking Ridge handles claims.



#25 LARGE COMPANY

Kessler Rehabilitation Center

Lyndhurst, Bergen County



Good times appear all year long on the calendar at Kessler Rehabilitation Center. The company hosts family fun days in every season, giving employees and their loved ones a chance to blow off steam in any weather. Kessler provides outpatient services through a network of more than 80 physical therapy centers in New Jersey. Founded in 1944, the company specializes in the treatment of sports, orthopedic, hand and work-related injuries. Whatever the task at hand, Kessler employees enjoy working together to get it done.



#26 LARGE COMPANY

Heartland Payment Systems

Princeton, Mercer County



When they see a colleague in need, employees of Heartland Payment Systems lend a hand. The company recently launched a nonprofit foundation, called Heartland Cares, to support workers going through challenging times. The foundation is funded through payroll deductions, and is overseen by a board composed of Heartland employees. Founded in 1997, Heartland is a payments processor serving more 250,000 business and education locations nationwide.



Communication, Accountability, Leadership, Legacy, Strategy, Success, Transition, Team, Management, Vision, Governance, Integrity, Finance, Growth, Family Business

THANK YOU TO THE SOBEL & CO. TEAM FOR YOUR PASSIONATE COMMITMENT TO SERVING FAMILIES IN BUSINESS FOR MORE THAN 56 YEARS.

EVERY MEMBER OF OUR TEAM CONTRIBUTES TO OUR PROMISE OF EXCELLENCE.

Sobel & Co., LLC
CERTIFIED PUBLIC ACCOUNTANTS AND CONSULTANTS

Alan D. Sobel, CPA | Managing Partner | 973-994-9494 | alan.sobel@sobel-cpa.com

Member of

PKF North America
An association of legally independent firms

www.sobel-cpa.com

JBL Electric is a specialty Utility Contractor serving the North East and Mid Atlantic Region's.

JBL Electric is Proud to be Nominated as One of the Best Places to Work in New Jersey.

3001 South Clinton Avenue
South Plainfield, NJ 07080
www.jblelectric.com

#27 LARGE COMPANY

Protiviti Inc.

Woodbridge, Middlesex County



When the opportunity for advancement rolls around, employees at Protiviti are prepared—thanks to “challenge schools.” Developed internally, the schools provide a week or so of real-time training that helps employees understand what is expected of the company’s consultants, senior consultants and managers. Based in California and founded in 2002, Protiviti is a business consulting and internal audit firm, with offices around the world helping clients solve problems in finance, technology and other areas.



#28 LARGE COMPANY

Trinitas Regional Medical Center

Elizabeth, Union County



Swimming, canoeing, rock climbing and miniature golf are all on tap at the annual “Employee Fun Day,” sponsored by Trinitas Regional Medical Center. The event, held at Black Bear Lake in Millstone Township, is open to employees, and their families and friends. Trinitas is a teaching hospital formed in 2000 from the consolidation of St. Elizabeth Hospital and Elizabeth General Medical Center. The hospital has created a variety of scheduling options to meet the diverse lifestyle needs of its employees.



#29 LARGE COMPANY

Sundance Vacations

Rockaway, Morris County



The stress of paying for a vacation can often outweigh the mental benefits of getting away from it all. It’s a stress that employees of Sundance Vacations can avoid. They can book a week’s vacation at any of the company’s properties for just \$350. Based in Wilkes-Barre, Pa., Sundance is a wholesale travel service used by consumers to book vacations at a discount. The company, which has a sales office in Rockaway, has access to resorts in Florida, the Caribbean and other destinations.



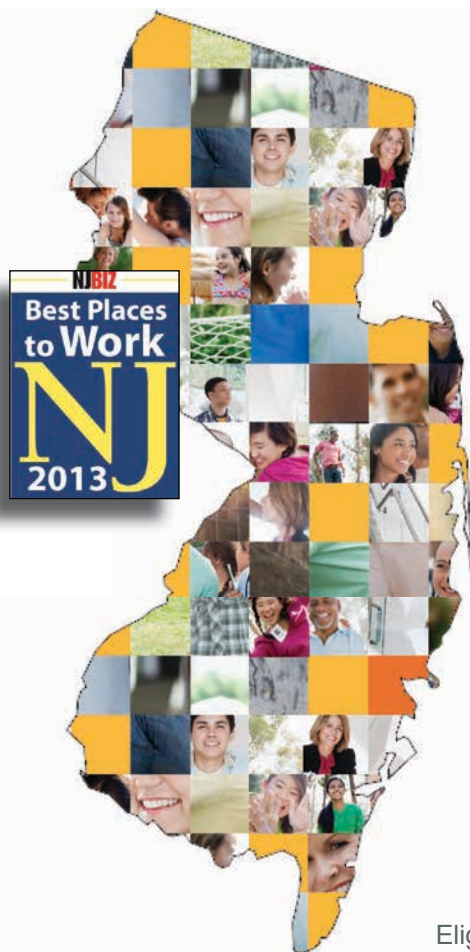
#30 LARGE COMPANY

Institute of Electrical and Electronics Engineers

Piscataway, Middlesex County



At the Institute of Electrical and Electronics Engineers, meetings are a chance to pick up the pace. The organization has a meeting room with six treadmills turned to face each other. Employees can use the room to walk while they talk and work. And the walking can help them rack up steps in the organization’s walking program, which includes a series of virtual challenges. Founded in 1963, the institute is a professional association dedicated to advancing technological innovation and excellence.



What a Great State To Be In.

With great people helping great customers do great things every day, Solix has earned its fourth consecutive Best Places to Work in NJ award. Our headquarters is home to a talented, dedicated workforce from 15 NJ counties and beyond who use paid volunteer days and other contributions to give back to local communities.

Our unique, proven eligibility solutions combined with years of expertise and the latest automation technologies, help customers run more efficient, compliant programs.

Learn more at solixinc.com.



Eligibility Determination • Program Management • Program Integrity Consulting • Customer Care

#31 LARGE COMPANY

The Conti Group
Edison, Middlesex County



You know when to expect the holiday party. And you can mark the calendar with awards dinners and special luncheons. But some milestones call for an impromptu celebration, and employees of The Conti Group are ready. When the construction and engineering firm lands a project, employees can reach into the company's wine rack and toast the new business. Founded in 1906, Conti operates around the country and overseas in numerous fields, including water, power, homeland security and renewable energy.



#32 LARGE COMPANY

QANI
Piscataway, Middlesex County



It needn't take long to relax and re-center. Quick relaxation techniques are available through weekly programs to employees at QANI. The techniques include chair yoga and office tranquility, and they can be completed in anywhere from 5 minutes to 30 minutes. Founded in 1992, QualCare Alliance offers a variety of self-insured and fully insured products and services, such as an HMO and a PPO. Company offerings also include disease management, claims administration and third-party administration.



#33 LARGE COMPANY

Affinity Federal Credit Union
Basking Ridge, Somerset County



Employees of Affinity Federal Credit Union can count on finding coworkers who are knowledgeable, engaging and caring. Whether it's planning a baby shower or shadowing colleagues to learn more about their jobs, the credit union's employees sustain a familial, friendly culture. Founded in 1935, Affinity delivers financial products and services to more than 135,000 members and 2,000 businesses. Affinity sponsors fun events, such as wellness fairs and an annual "Fitness Walk-a-Thon."



#34 LARGE COMPANY

Solix, Inc.
Parsippany, Morris County



Solix's innovative online discussion tool allows employees to exchange ideas—and throw snowballs. The tool—dubbed "ICE" for Innovate-Collaborate-Exchange—has a winter theme. In addition to tossing snowballs, employees enjoy visits from ICE's penguin mascot, who arrives in both virtual and stuffed-animal forms. Even senior executives are in on the fun, and they regularly select ideas from the dialogue on ICE. Solix is a process outsourcing firm focused on government and commercial benefit programs.



What makes **Wiss & Company** one of the *Best Places to Work in New Jersey?*

Buckets!

We believe each of our team members has a virtual "bucket of happiness," and each day it gets filled by co-workers and satisfied clients. A compliment... a helpful hand... a thank you... it all adds up to a more enjoyable work environment and exceptional service for our clients.



SUNDANCE VACATIONS

We share the common goal of enriching the lives of our customers and each other by helping people experience quality vacations through caring, professional service.

www.sundancevacations.com
Proud to be one of New Jersey's Best Places to Work!

#35 LARGE COMPANY

Realogy Holdings Corp.
Parsippany, Morris County



There are many roads to better health. And employees of Realogy Holdings Corp. can take one that is especially entertaining: dance. As part of its iThrive wellness initiative, the company offers on-site dance classes reflecting a variety of cultural traditions. Founded in 2005, Realogy is a real estate franchising company operating real estate brokerages, as well as relocation and title services. The company's brands and business units include Coldwell Banker and Sotheby's International Realty.



#36 LARGE COMPANY

Marlabs Inc.
Piscataway, Middlesex County



At Marlabs, leaders take a few key ingredients and cook them into a great place to work. Respect, flexibility and job security define the company's culture, as does an emphasis on doing the right thing whenever possible. For example, Marlabs fully reimburses employees who participate in cause-based marathons. And the company lightens its environmental impact wherever possible. Founded in 1996, Marlabs provides software and services that improve operational efficiency and help clients gain a competitive advantage.



#37 LARGE COMPANY

Duane Morris LLP
Newark, Essex County



The New Jersey-based employees of Duane Morris have colleagues in offices across the United States, as well as in the United Kingdom and Asia. While email and other tools allow far-flung colleagues to stay connected, the law firm doesn't rely on technology alone. Every few years, the law firm's staff members gather together. Based in Philadelphia and founded in 1904, Duane Morris offers clients a one-stop shop for legal services that include intellectual property, health care, employment and real estate.



#38 LARGE COMPANY

Citrin Cooperman
Livingston, Essex County



Fuel for a busy tax season is readily available at Citrin Cooperman. While employees are hard at work from January to April, the accounting firm dishes out breakfasts, special snacks and pizza dinners. In addition, staff members are treated to monthly happy hours. Citrin has offices in New Jersey, New York, Connecticut, Pennsylvania and the Cayman Islands. The firm offers employees a chance to give back via its day of service, when the office shuts down and staff members volunteer at a local charity.



We're honored to be recognized as one of the
**Best Places to Work
in New Jersey.**

Premier Healthcare Exchange (PHX)

Through the ambition and creativity of new hires and seasoned employees alike, we have built a reputation as an innovator and leader in healthcare cost management. Since 2001, we've been committed to maintaining a work environment that attracts, retains and rewards the best and brightest in our industry. Visit PHX-online.com to learn more and search careers.



Premier Healthcare Exchange, Inc.
2 Crossroads Drive
Bedminster, NJ 07921
PHX-Online.com
888.311.3505

Premier Healthcare Exchange, Inc. is proud to be an Equal Opportunity Employer.

#1 SMALL/MEDIUM COMPANY

eTeam Inc.

South Plainfield, Middlesex County



Bodies and minds both enjoy a workout at eTeam.

Company employees looking to work up a sweat can take advantage of an on-site fitness room, as well as subsidies for joining a gym. In addition, eTeam sponsors group fitness programs and marathon teams.

When it's the brain that employees need to flex, they can head to a vibrant room that is stocked with electronic gaming equipment designed to spark great ideas.

Creative employees, in fact, are key to eTeam's success. Founded in 1999, the company provides project-based, niche skills and contingent staffing services in SAP, data management, application development and testing. Contractors from eTeam implement enterprise systems for clients around the world.

Although the work can be demanding, eTeam takes a flexible approach to scheduling. Employees find the company is ready to accommodate them when they want to attend school events or have to care for sick family members. At times when employees must travel overnight, they are rewarded with financial incentives or extra paid time off.

The company strives to keep overtime to a minimum, and it schedules meetings and staff events only during work hours. Not that staff events always revolve around work. The company throws annual summer and holiday parties. It also holds monthly happy hours and weekly bowling get-togethers.

While social events offer a chance for employees to mingle and share their thoughts, eTeam has created a range of other opportunities to communicate. The company takes time for monthly town hall meetings during which employees can present their ideas, concerns and suggestions. If they want a more private venue, they are encouraged to approach the company's top executives, who maintain an open-door policy.

The doors at eTeam are open in other ways as well. The company has established a formal leadership development program and a formal mentoring program, both of which prepare junior employees to take on greater authority in the organization.

Regardless of rank, all employees share in generous bonus and profit-sharing programs—proof that exercising the body and the mind has its rewards.

#2 SMALL/MEDIUM COMPANY

oXya

Jersey City, Hudson County



At oXya, employees confronted a serious dilemma at the end of last summer: What should they do every Tuesday during the two hours they had been devoting to beach volleyball? Weekly sports sessions are among the ways oXya encourages employees to unwind and have fun during the work day. Employees also might be found dancing, making movies or kicking around a soccer ball. The company helps midsize and large organizations increase the efficiency and flexibility of their SAP infrastructure and support operations.



We love what we do ...and it shows.

As one of the world's largest hospitality companies, Wyndham Worldwide's culture of strong values and signature Count On Me! customer service is focused on providing great experiences for our guests and associates. It's what sets us apart and makes us one of the **Best Places to Work in New Jersey** for the fourth consecutive year.

To learn more about how you can become a member of the team that makes Wyndham Worldwide a great place to work, an exceptional travel partner, and a successful company, please visit www.wyndhamworldwide.com/careers.



#3 SMALL/MEDIUM COMPANY

Red Nucleus

Hamilton, Mercer County



Quarterly meetings often induce dread. But not at Red Nucleus. Every three months, employees there enjoy a closer look at the company's books, a tasty lunch and a slew of fun, team-building activities. Holiday parties also are a blast, with music, great food, an open bar, and hotel rooms paid for by the company so employees can stay safe. Red Nucleus designs and develops training and communications applications for clients in the life sciences industry. Services include mobile apps and video production.



#4 SMALL/MEDIUM COMPANY

Kreinces Rollins & Shanker, LLC

Rochelle Park, Bergen County



It doesn't take a calculator to add up the value of workplace benefits at Kreinces Rollins & Shanker. Employees know they have a good thing going in the accounting firm's generous mix of events, bonuses, flexible hours, educational opportunities and other perks. Above all, Kreinces takes pride in maintaining a friendly, relaxed atmosphere and an open-door policy—which extends to employees' children, who are welcome in the office if other care arrangements fall through.



#5 SMALL/MEDIUM COMPANY

JBL Electric

South Plainfield, Middlesex County



Managers keep their doors open at JBL Electric, but they don't sit around waiting for employees to walk through. The company's president and upper-level managers make a concerted effort to speak at least once a day with every employee. The conversation might center around some of the benefits available at JBL, such as free gym memberships and the year-end profit-sharing plan. Founded in 1993, JBL is a utility contractor serving the Northeast and mid-Atlantic regions.



#6 SMALL/MEDIUM COMPANY

Rue Insurance

Hamilton, Mercer County



Not unlike the Oscars, the annual awards night at Rue Insurance is a highly anticipated event. And why not? It's an upscale night out, with good food and great entertainment—last year's awards night even featured an Elton John impersonator. In 2012, everyone was a winner, as Rue Insurance took employees and their guests on a two-night cruise to celebrate reaching financial goals in 2011. Founded in 1917, Rue Insurance serves the insurance, employee benefit and financial services needs of more than 11,000 clients.



We Stand As One.

Thank you
to our dedicated employees
for making Untracht Early
One of the Best Places to Work
in New Jersey for the
third consecutive year.



Accounting & Audit • Consulting & Advisory • Tax Services
Outsourced Accounting • Family Office and Business Support Services



973.408.6700

www.untracht.com

#7 SMALL/MEDIUM COMPANY

Pharmalink Consulting
Short Hills, Essex County



After the devastation wrought in 2012 by Hurricane Sandy, Pharmalink Consulting donated one day's revenue to the Red Cross. But the company did not forget its own employees, many of whom were struggling with damaged homes and disrupted schedules. Pharmalink came through with various forms of assistance, including help with day care and hotel rooms. With eight offices on three continents, Pharmalink provides consulting expertise on regulatory affairs in the pharmaceutical and related industries.



#8 SMALL/MEDIUM COMPANY

Sharpe, Kawam, Carmosino & Co., LLC
Boonton Township, Morris County



Every Thursday afternoon in the summer, an ice cream truck pulls into the parking lot of Sharpe, Kawam, Carmosino & Co. Everyone gets to choose their favorite treat. Even those who manage to resist the ice-cold temptation get something special: the next day off. The accounting firm operates on a four-day workweek during the warmer months. During tax season, when time off is at a premium and distractions are few, the firm still works in something special by setting goals and handing out rewards every week.



#9 SMALL/MEDIUM COMPANY

RAMPS International, Inc.
Edison, Middlesex County



A busy workday often provides an excuse for people to skip taking care of themselves. And even if they had the time, where would they go for a little peace and relaxation, or for a quick bit of exercise? Employees of RAMPS International know exactly where to go. The company has a treadmill on-site, and it stores yoga mats and other accessories within easy reach of employees. Meditation and yoga classes also are available. Founded in 2007, RAMPS is an information technology staffing and consulting firm.



#10 SMALL/MEDIUM COMPANY

Princetel
Hamilton, Mercer County



At many companies, sick employees have to calculate the time off they want to use versus the potential need for time off down the road. It's a calculation that employees at Princetel don't have to make. The company offers unlimited sick time and personal leave. Princetel manufactures fiber optic inter-connect products with a main focus on fiber optic rotary joints, electrical slip rings, and video/data MUX/DMUX fiber media converters for the geophysical, military, biomedical and other markets.



The Home of Better Banking is also the home of one of the best places to work... *again!*

As a community bank, Boiling Springs Savings Bank has always thought it was important to treat people with respect and dignity, whether they are customers or employees. So it gives us great pride to be selected for a second year in a row as one of NJBIZ's 2013 "Best Places to Work in NJ." Come on in and meet some of our dedicated and friendly employees!



...we are so proud!



Come Home To Better Banking

Visit us at: www.bssbank.com
Corporate Headquarters:
25 Orient Way, Rutherford, NJ 07070
Tel: 201-939-5000

Offices In: Clifton, Florham Park, Glen Ridge, Glen Rock, Hillsdale, Lake Hiawatha, Lincoln Park, Lyndhurst, Mahwah, Montclair, Montville, Ridgewood, Rochelle Park, Rutherford, Wyckoff



NJBIZ

Best Places to Work

NJ

Our commitment to workplace excellence
doesn't go unrecognized.

NJBIZ has once again named Holy Name Medical Center one of the "Best Places to Work in New Jersey." It's an accomplishment we are very proud of. Our employees share a sense of community and collective purpose that can't help but shine through to our patients. And we know a happy, satisfied staff is your best assurance of a great patient care experience.



#11 SMALL/MEDIUM COMPANY

ApTask
Edison, Middlesex County



Employees who go the extra mile for ApTask get a little extra for themselves. The company regularly hands out cash bonuses to anyone going above and beyond the call of duty. All employees also are eligible for commissions. And every quarter, the company's two top performers win iPads. Everyone, meanwhile, gets to dig into the company's occasional potluck lunches. Founded in 2010, ApTask provides workforce and staff augmentation solutions for clients ranging from mid-sized companies to Fortune 500 firms.



#12 SMALL/MEDIUM COMPANY

Dynamic Engineering Consultants, PC
Lake Como, Monmouth County



If you leave your surfboard at home—yes, your surfboard—you don't have to worry, as long as you're headed into work at Dynamic Engineering Consultants. The firm stows away a few extra surfboards, and a few extra bicycles to boot, for its employees to use before work, after work or during lunch. Other stress-busting outlets at Dynamic include annual bonfires, a volleyball team and a Friday happy hour featuring beers from around the world. Dynamic provides professional engineering and related services.



#13 SMALL/MEDIUM COMPANY

Wilkin & Guttenplan PC
East Brunswick, Middlesex County



Wilkin & Guttenplan recently stepped up its efforts to craft a great workplace by pouring more than \$750,000 into an office remodeling. The project complements the accounting firm's rich slate of events, programs and benefits that engage employees throughout the year. Wilkin serves closely held and middle-market businesses and their owners, medical professionals and practices, nonprofits, professional athletes and entertainers, along with high-net worth individuals, real estate entities and technology companies.



#14 SMALL/MEDIUM COMPANY

RegentAtlantic
Morristown, Morris County



The Culture Club at RegentAtlantic is no throwback from the 1980s. Rather it's a conscious effort by the firm to discuss and improve its corporate culture and maintain its reputation as a great place to work. The firm holds monthly meetings, named after the 1980s pop band Culture Club, during which staff members are invited to bring up what they like, what they don't like and what they would like to change. RegentAtlantic is a wealth management firm that combines financial consulting and investment management.



All we do is work. Workplace law.

BEST LAW FIRMS

L&E GLOBAL
a member of
employers' counsel worldwide

Jackson Lewis is proud to be named one of the Best Places to Work in New Jersey and congratulates the honorees

We are grateful to our attorneys and staff who help us maintain an environment of teamwork and dedication to providing our clients with the best possible service. As a national employment law firm that advises a wide range of employers about best practices in the workplace, there is no greater honor than being recognized for practicing what we preach. To learn more about our services, visit www.jacksonlewis.com.

RICHARD J. CINO, ESQ.
220 Headquarters Plaza • East Tower, 7th Floor
Morristown, NJ 07960 • 973.538.6890

jackson | lewis
Preventive Strategies and
Positive Solutions for the Workplace®

#15 SMALL/MEDIUM COMPANY

Angel Medical Systems, Inc.

Shrewsbury, Monmouth County



At Angel Medical Systems, flexible hours do more than allow employees to fulfill important family obligations. Angel's employees also take advantage of the company's flexibility to take long walks or head to the gym during work hours. If a workout is their destination, employees pack a \$45 monthly reimbursement for their gym memberships. Founded in 2001, Angel Medical has been developing an implantable monitoring and alert system designed to warn of impending heart attacks, even when symptoms aren't clear to the patient.



#16 SMALL/MEDIUM COMPANY

IT America Inc.

Edison, Middlesex County



The little things add up at IT America. Flexible hours, a positive environment and appreciation for employees come together to make the company a great place to work. Added to the mix is strong support for employees engaged in community service. Founded in 2004, IT America offers strategic consulting services that meet its clients' objectives of combining sustainable growth with a competitive edge. Services offered by the company's experts include business analysis, technical guidance and project development.



#17 SMALL/MEDIUM COMPANY

Advisors Mortgage Group, LLC

Wall, Monmouth County



Open lines of communication extend beyond the business day at Advisors Mortgage Group. The company shares corporate cell phone numbers so that employees can get their questions answered any time of day. The company takes pride in making sure someone is always available. Founded in 1999, Advisors is a mortgage banker/correspondent lender offering a branch program to qualified applicants, with a back office that handles underwriting, closing, funding, accounting, licensing and other aspects of the business.



#18 SMALL/MEDIUM COMPANY

Lassus Wherley

New Providence, Union County



Wondering what it takes to get ahead? If you work at Lassus Wherley, you'll get a detailed map laying out the prerequisites needed to advance into a new position at the company. Most maps include key elements of success, such as mentoring, off-site training and continuing education. As an added bonus, the firm supports employees who hold leadership roles in volunteer organizations. Lassus Wherley is a wealth management firm providing a range of financial planning and investment services.



We're a **BEST** Place to Work, Because the **BEST** Work at Trinitas!



New Point Campus

Williamson Street Campus

Cranford Campus



FIVE TIME WINNER!



#19 SMALL/MEDIUM COMPANY

Condor Capital Management

Martinsville, Somerset County



An appointment with the boss recently took on a whole new meaning for employees of Condor Capital Management. The company took them all to see Bruce Springsteen, aka “The Boss,” renting a skybox and limousine for the occasion. Such outings are a regular feature at Condor, a registered investment advisory firm. Other after-work events include happy hours and miniature golf. The company also holds season tickets for football games at Rutgers University, and makes them available to employees.



#20 SMALL/MEDIUM COMPANY

Institute for Professional Excellence in Coaching

Shrewsbury, Monmouth County



The crayons and coloring books probably come in handy when children drop by. But that’s not why the craft supplies are lying around the Institute for Professional Excellence in Coaching. They are there for employees who want to fire up their creativity, switch mental gears or simply take a break. The organization also has installed a public whiteboard where employees can gather for impromptu games of hangman. Founded in 1999, the Institute offers training for life and business coaches.



#21 SMALL/MEDIUM COMPANY

Jennifer Connelly Public Relations

Parsippany, Morris County



It’s not always the technical skills that elevate professionals above the crowd. Jennifer Connelly Public Relations makes sure its employees learn the other talents, often referred to as “soft skills,” that help them shine. The firm offers coaching on working together, making presentations, conducting meetings, and forging and maintaining relationships. Topping it all off are lessons in stress-reduction techniques, such as breathing, grounding and stretching. JCPR is a one-stop communications shop.



#22 SMALL/MEDIUM COMPANY

Amicus Therapeutics

Cranbury, Middlesex County



Many companies, having gotten the memo about healthy snacks, are starting to offer fruits and vegetables in the company cafeteria. Amicus Therapeutics is helping its employees stock their own cupboards with healthy alternatives. The company’s wellness program has struck up a partnership with a local farm that allows employees to buy shares of fruits and vegetables. Founded in 2002, Amicus is developing treatments for rare and orphan diseases.



BIZ
Best Places to Work
NJ
2013

Nisivoccia LLP is proud to be recognized as one of the Best Places to Work in New Jersey for 2013

This achievement would not have been possible without our employees. Their dedication, professionalism and desire to help our clients is a tribute to our success.

Thank you for making Nisivoccia LLP one of the Best Places to Work in New Jersey.

Certified Public Accountants & Advisors
973.328.1825 | www.nisivoccia.com
Independent Member of BKR International.

#23 SMALL/MEDIUM COMPANY

Profit Sense Innovations, LLC

Jersey City, Hudson County



For many people, a trip to the water cooler is often the only break in their daily routines. At Profit Sense Innovations, employees feast on a rich menu of diversions, including a summer barbeque and an annual trip to the Six Flags amusement park. Employees also enjoy a potluck meal for Thanksgiving and extra time off for Black Friday. Founded in 2009, Profit Sense is a Web-based, small-business development firm whose services include Web design and market research.



#24 SMALL/MEDIUM COMPANY

Wiss & Company, LLP

Livingston, Essex County



It's how much you do, not how long you spend in the office, that matters at Wiss & Company—even during the busy tax season when the work seems never-ending. The accounting firm does not require any set number of hours. Instead, it measures productivity, part of an overall effort to help employees balance their work and professional lives. Founded in 1969, the firm maintains a flexible attitude to employee scheduling, allowing them to pursue activities that interest them and discover new ones.



#25 SMALL/MEDIUM COMPANY

Brinton Eaton, LLC

Madison, Morris County



Discussions about work-life balance often neglect the value people find in serving their communities. At Brinton Eaton, employees are actively encouraged to volunteer, and they often are supported by financial contributions from the firm. Employees hold positions in a range of charitable organizations. They also were active after Hurricane Sandy and took part in a drive for a local food pantry. Founded in 1988, Brinton Eaton is a financial advisory firm serving individuals and their families across multiple generations.



#26 SMALL/MEDIUM COMPANY

The Casey Group

Parsippany, Morris County



Employees of The Casey Group can work from home. But there are days when they may feel torn between home and office. The day of the company's annual Thanksgiving luncheon is one. Employees enjoy turkey with all the fixings, as well as hot apple cider and a sumptuous dessert table. Another temptation looms on the day of the annual ice cream social. Casey helps companies use technology more effectively, whether that means modernizing existing systems or developing innovative mobility and cloud applications.



We are very proud of each and every employee. And we are honored and humbled to be named **ONE OF THE BEST PLACES TO WORK IN NEW JERSEY!**



If your company doesn't have a credit union, call us. Membership is FREE.
800.284.8663 x3041 | XCELfcu.org | TomQuigley@XCELfcu.org

#27 SMALL/MEDIUM COMPANY

Boiling Springs Savings Bank

Rutherford, Bergen County



A company gym is only useful as long as its doors are open. The fitness center at Boiling Springs Savings Bank is open longer. It welcomes employees before the workday begins and stays open until 8:30 p.m. Employees also can work up a sweat on weekends, when the center is open from 8 a.m. to 3:30 p.m. The extra hours, as well as on-site Zumba and yoga instruction, offer an extra edge to employees hoping to win the bank's annual weight-loss competition. Boiling Springs has 18 branches in northern New Jersey.



#28 SMALL/MEDIUM COMPANY

Trinity Rehab

Red Bank, Monmouth County



Trinity Rehab has been creative in designing an incentive program that rewards people based on the kinds of work they do. Whether they are greeting new patients, mailing out bills or providing care, employees are eligible for regular bonuses. Employees also appreciate the company's flexible schedules and special events. Founded in 2001, Trinity provides outpatient physical and occupational therapy. Employees have access to an on-site gym stocked with cardio and strength-training equipment.



#29 SMALL/MEDIUM COMPANY

Comrise

Hazlet, Monmouth County



Employees bring different talents to the workplace. At Comrise, a diverse workforce is able to bring different foods. For its annual "International Day," the company invites employees to arrive with dishes reflecting their cultural backgrounds and family traditions. They then take a few hours out of the day to eat and learn about each other. Founded in 1984, Comrise offers a range of workforce, managed IT and data solutions, including staff augmentation, executive search, custom application development and data optimization.



#30 SMALL/MEDIUM COMPANY

Coyne Public Relations

Parsippany, Morris County



The competitive spirit is well tended at Coyne Public Relations. The agency houses a putting green and a darts board, as well as foosball and pool tables, all of which host regular contests. The competition remains friendly, however, so that employees can enjoy sitting down together at monthly catered lunches. They can also have a friendly chat while getting manicures at the company's on-site nail salon, open once a week. Founded in 1991, Coyne offers marketing and public relations services.



©2011 Coyne PR/Valie-Hobson



MARATHON DATA SYSTEMS

Transforming Field Service, One Customer At A Time

WE ARE NOW LOOKING FOR:

- Self-motivated, consultative **B2B INSIDE SALES REPS**
- Bright, empathetic **SOFTWARE SUPPORT REPS**
- Team-oriented, agile **SOFTWARE DEVELOPERS**

In addition to free lunch daily, Marathon employees enjoy:

- Competitive salary and bonus options
- Robust benefits and vacation packages
- 401K, life insurance benefits & annual flu clinics
- Ample career growth opportunities
- A fun, energetic work environment

Come grow with us!

Learn more at...



There is such a thing as a **FREE LUNCH** at Marathon Data Systems!





Thank You.

“Investors” are people who care deeply about their families, their work and their community. We are honored to be listed as one of NJBIZ’s Best Places to Work in New Jersey.



investorsBank

Banking in *your* best interest.

Call 855.iBank4U • Visit myinvestorsbank.com



#31 SMALL/MEDIUM COMPANY

Hudson Horizons, Inc.
Saddle Brook, Bergen County



You can't always judge a company by the company car. Nonetheless, the vehicle made available to employees of Hudson Horizons is one sweet ride. The company owns a convertible Smart car wrapped with the company logo. A sign-up sheet ensures everyone gets a turn behind the wheel. Founded in 2003, Hudson Horizons specializes in custom Web development, website design, content management systems, search engine optimization and social media marketing, as well as other services.



#32 SMALL/MEDIUM COMPANY

Pashman Stein PC
Hackensack, Bergen County



Mondays are hard enough. To ease the sting, law firm Pashman Stein recently started serving bagels on Monday mornings—there's no point starting the week on an empty stomach. The breakfast treats join a roster of other food-related fun, including monthly pizza lunches and weekly happy hours. Founded in 1995, Pashman Stein boasts a practice focused in the areas of alternative dispute resolution, appellate advocacy, chancery litigation and complex commercial litigation, among others.



#33 SMALL/MEDIUM COMPANY

R&J Public Relations
Bridgewater, Somerset County



Forget whatever you've heard about having too many cooks. When it comes to the "R&J Cooking Cup," the more the merrier. The event is a staple event for the staff of R&J Public Relations. The firm's employees also enjoy a relaxed summer schedule, extra time off around holidays and a casual dress code. Founded in 1986, R&J specializes in corporate communications, reputation management, publicity and media relations, brand diagnostics, new product introductions, special events and other services.



#34 SMALL/MEDIUM COMPANY

Worldwide Supply
Franklin, Sussex County



Good times aren't left to chance at Worldwide Supply. The company maintains a "Fun Committee," a group of employees dedicated to organizing fun and stress-free activities for their colleagues. The company also has established programs to recognize employee birthdays and other milestones. Founded in 1994, Worldwide Supply distributes used and surplus network hardware, including routers, switches and other accessories, from Cisco, Motorola and other major brands.



We ♥ RN

Innovative. Creative. Fun.

red nucleus

Award-winning learning solutions for the life sciences industry.

print • e-learning • virtual preceptorships • mobile • workshops • games • www.red-nucleus.com

SUBSCRIBE TO NJBIZ IN PRINT!

And receive the 2013 NJBIZ Book of Lists for FREE!

To order call (866) 288-7699 or go to njbiz.com/subscribe and use promo code **13BOOK*** to receive special pricing.

*new subscribers only

#35 SMALL/MEDIUM COMPANY

Credit Union of New Jersey
Ewing, Mercer County



As a financial institution, the Credit Union of New Jersey knows a thing or two about investing. And one of the places the organization chooses to invest is its employees. The credit union offers a generous tuition reimbursement to staff members who are taking classes and pursuing degrees. In addition, formal employee development plans are in place to help guide staff members in their careers. Credit Union of New Jersey serves more than 42,000 members. It was founded in 1943 to serve employees of the state highway department.



#36 SMALL/MEDIUM COMPANY

Sobel & Co., LLC
Certified Public Accountants
Livingston, Essex County



It's cold outdoors and there's plenty of work to do indoors. But that doesn't stop the employees of Sobel & Co. from taking part in some much-needed exercise. Every Saturday during tax season, the accounting firm's staff members compete in Wii tennis tournaments. The championship match takes place before a full house at the firm's after-tax-season party. Sobel, founded in 1956, also offers a range of programs to help employees advance and excel in their careers, not just on the virtual tennis court.



#37 SMALL/MEDIUM COMPANY

AnnieMac
Home Mortgage
Mount Laurel, Burlington County



Employee recognition is no afterthought at AnnieMac Home Mortgage. It is a central part of the workplace, starting with the company's "AnnieGrams." Employees bestow "AnnieGrams" on each other whenever they see an action worthy of praise. The message is sent to the entire company, as well as to the employee being honored. The company also sets aside time every year to thank its sales and operations staff for the work they do year-round. Founded in 2011, AnnieMac provides mortgage products nationwide.



#38 SMALL/MEDIUM COMPANY

Nisivoccia LLP
Mount Arlington, Morris County



Many times, a smile is all you need to lift the stress of a hectic day. Accounting and consulting firm Nisivoccia has found ways to induce good feelings in its employees. During the tax season, employees open their inboxes to find a joke of the day. At other times, they might indulge in a cookie swap or a cubicle-decorating contest. In addition to its traditional tax, accounting and auditing practice, the firm, founded in 1970, specializes in local and county government, education, real estate, financial services and health care.



TOP 100 PRIVATELY HELD COMPANIES 2013

In these tough economic times, New Jersey's most dynamic, privately-held businesses are showing positive results even in a slow economy. Make sure you're a part of this year's special coverage of New Jersey's Top 100 Privately Held Companies, when NJBIZ devotes an entire publication to these leading businesses.

This exciting opportunity will give you a chance to market your products or services to these savvy business leaders. Our most popular issue of the year is highly anticipated and heavily read by thousands of affluent executives, professionals and business owners. Get in front of these top decision-makers and call today to take advantage of this opportunity to reach our exclusive audience.

This is a book that has staying power – with hard to find information and inside secrets and advice through exclusive interviews with top CEOs. Don't miss this opportunity to market your business by reaching over 50,000 readers of the most popular and highly anticipated publication of 2013.

▶▶ For only \$95, you can include a URL link to your advertisement to create a live ad on the digital edition and drive traffic to your company's website!

PUBLICATION DATE
AUGUST 26, 2013

Inside Space Reservation:
July 10, 2013
Inside Materials Due:
July 12, 2013

Contact advertising (732) 246-5729 or advertising@njbiz.com for more information

#39 SMALL/MEDIUM COMPANY

iCIMS, Inc.

Matawan, Monmouth County



Employees at iCIMS worry less about their carbon footprint. When they join the company, it funds the planting of 25 trees through The Nature Conservancy's Plant a Billion Trees campaign. And that's just to start. Other green initiatives at iCIMS include donations to increase the use of renewable energy, and matching funds for employees who contribute to initiatives benefiting the local or global environment. Founded in 1999, iCIMS provides software-as-a-service talent management solutions to more than 1,300 clients.



#40 SMALL/MEDIUM COMPANY

Untracht Early LLC

Florham Park, Morris County



Two performance appraisals are better than one. That, at least, is the logic in place at Untracht Early, which provides employees with feedback two times a year. The firm also is putting in place a new program to help employees focus on career development. Staff members who go on to pursue further education in taxation and accounting are eligible for tuition reimbursement. Founded in 1993, Untracht Early offers a full range of accounting, auditing, consulting and tax services to individuals and businesses.



#41 SMALL/MEDIUM COMPANY

Brilliant Environmental Services, LLC

Toms River, Ocean County



Tools to lighten up the workday abound at Brilliant Environmental Services. The company's employees can access online radio stations, or they can head to a conference room for a little TV time. Flexible hours, paid time off for birthdays and a great holiday party are other ways the company takes care of its employees. Founded in 2006, Brilliant is an environmental consulting and contracting company with a branch office in Bensalem, Pa. The company serves residential, commercial, industrial and public-sector clients.



#42 SMALL/MEDIUM COMPANY

XCEL Federal Credit Union

Bloomfield, Essex County



A trip to the gym yields more than improved physical health for the employees of XCEL Federal Credit Union. The trip might also boost their mental health. Whenever employees work up a sweat at the credit union's on-site gym, they get a chance to win additional vacation days. Other wellness incentives include bonuses and rewards for employees who set and meet personal goals. Founded in 1964, XCEL offers a range of financial services and products to employees at dozens of companies.



We proudly support and congratulate
Investors Bank
 on its selection by NJBIZ as one of the
"Best Places to Work in New Jersey"



90 Woodbridge Center Drive ♦ Woodbridge, NJ
 732-636-8000 ♦ www.wilentz.com

Additional Offices In:
 Eatontown ♦ New York ♦ Philadelphia

CONNECT WITH
 US ONLINE



#43 SMALL/MEDIUM COMPANY

MWW

East Rutherford, Bergen County



Performance reviews are often little more than a chance to find out where you've been. At MWW, they're an opportunity to figure out where you can go. Managers at the public relations firm regularly recommend training and coursework that employees can use to develop their skills. And employees may not have to leave the office to get an education. MWW University features a variety of training programs on topics like pitching ideas, writing for public relations and using PowerPoint. MWW was founded in 1986.



#44 SMALL/MEDIUM COMPANY

Premier Healthcare Exchange, Inc.

Bedminster, Somerset County



Employees at Premier Healthcare Exchange don't have to worry about finding the time for a spa getaway. The spa comes to them. To recharge and rejuvenate employees, the company sponsors twice-yearly spa days in the office. Founded in 2001, Premier provides advanced cost-management solutions for health plans. The solutions combine claim processing automation with professional services to deliver a timely, centralized approach that reduces payment errors and speeds up resolution.



#45 SMALL/MEDIUM COMPANY

ECI Technology, Inc.

Totowa, Passaic County



Life is full of big decisions. Some of the bigger ones are a little easier for employees of ECI Technology. The company pays for employee life insurance, with a voluntary buy-up option. Also available is long-term disability insurance, estate planning assistance and a health advocate program. Founded in 1987, ECI provides technology for the measurement and control of chemical processes in semiconductor manufacturing. ECI's chemical management systems are also used in the LED, printed circuit board and solar industries.



#46 SMALL/MEDIUM COMPANY

Wayside Technology Group, Inc.

Shrewsbury, Monmouth County



For every sport, there is a season at Wayside Technology Group. The company sponsors seasonal competitions in bocce, bowling and miniature golf, in addition to hosting impromptu foosball contests. The company also supports its employees who compete in events such as 5Ks, warrior dashes, mud runs and triathlons. Founded in 1982, Wayside provides computing products and solutions directly and through computer reseller networks. Subsidiaries include Lifeboat Distribution and TechXtend/Programmer's Paradise.



Congratulations to the staff of **Compensation Solutions** and our fellow nominees on being named as one of the Best Places to Work in New Jersey



Human Resources ~ Payroll ~ Employee Benefits ~ Retirement Staffing ~ Recruiting ~ Business Insurance ~ Risk Training

Corporate Office
500 Valley Road, Suite 201
Wayne, NJ 07470

www.csihro.com
1-800-654-4234

New York Office
Penn Plaza
New York, NY



Relationships are built on many things...

Like working together to make our communities better.



Our clients share our sense of pride in building value within the broader communities where we live and work. Like many of our clients, Crowe Horwath LLP supports the civic organizations and charities that provide the backbone for economic progress.

Crowe is proud to be named one of the Best Places to Work in New Jersey!

To learn more, visit crowehorwath.com, or contact Wendy Cama at 973.422.4550 or wendy.cama@crowehorwath.com.

Audit | Tax | Advisory | Risk | Performance

Crowe Horwath LLP is an independent member of Crowe Horwath International, a Swiss Verein. Each member firm of Crowe Horwath International is a separate and independent legal entity. Crowe Horwath LLP and its affiliates are not responsible or liable for any acts or omissions of Crowe Horwath International or any other member of Crowe Horwath International and specifically disclaim any and all responsibility or liability for acts or omissions of Crowe Horwath International or any other Crowe Horwath International member. Accountancy services in Kansas and North Carolina are rendered by Crowe Chizek LLP, which is not a member of Crowe Horwath International. © 2013 Crowe Horwath LLP FWO14225B

#47 SMALL/MEDIUM COMPANY

Emerald Financial Resources

Bridgewater, Somerset County



Make sure to pack your bags before going to work for Emerald Financial Resources. The company offers its employees a variety of ways to earn trips as a reward for working hard and exceeding goals. But even back at the office, employees have reason to be happy. Emerald offers flexible scheduling and a range of activities, including a company picnic and an awards gala. Founded in 1998, Emerald delivers a portfolio of customized financial solutions, including insurance, investments and health benefits, for its clients.



#48 SMALL/MEDIUM COMPANY

Kessler Foundation

West Orange, Essex County



The definition of “full time”—often the cutoff for deciding who gets company benefits—has an employee-friendly feel at Kessler Foundation. The nonprofit counts anyone working a schedule of at least 24 hours per week as full time. Founded in 1985, Kessler supports rehabilitation research in seven specialized laboratories, with studies focused on helping people limited by strokes, multiple sclerosis, spinal cord and brain injuries, and other chronic neurological conditions.



#49 SMALL/MEDIUM COMPANY

Daniella Koren Inc.

Fairfield, Essex County



The company parking lot is not a place where people linger. But the blacktop at Daniella Koren got a second look from the company’s “Fun & Respect,” and now it is the site of tailgate parties. Other special events cooked up by the committee include a summer Olympics and scavenger hunts. Founded in 1997, DKI is a health-care marketing company whose services include analytics, strategic planning and technology. The company gives employees the week off between Christmas and New Year’s.



#50 SMALL/MEDIUM COMPANY

SBS Group

Edison, Middlesex County



If your employees are willing to tow a Boeing 737 for a good cause, you must be doing something right. A group of workers from SBS Group were among more than 800 people who gathered last fall at Newark Liberty International Airport to pull a passenger jet to raise money for Special Olympics of New Jersey. Founded in 1986, SBS provides business management solutions to mid-sized companies across the country. When they’re not pulling airplanes, SBS employees can work out using the company’s Wii Fit system.



CALL FOR NOMINATIONS!



Presented by:



WithumSmith+Brown, PC
Certified Public Accountants and Consultants

To submit a nomination, please visit www.njbiz.com/events

**NOMINATION DEADLINE:
Wednesday, July 17, 2013**

Major Sponsors:



The **NJBIZ** CFO of the Year awards program celebrates New Jersey’s financial executives at all levels who contribute to the success of New Jersey’s economic growth and stability. An independent panel of industry professionals will judge the nominations and select the finalists in each of the award categories. Finalists will be recognized and the winner in each category will be announced during an awards breakfast on Tuesday, October 29, 2013.

AWARD CATEGORIES

CFO of the Year:

- Public Company with revenues over \$250MM
- Public Company with revenues up to \$250MM
- Private Company with revenues over \$50MM
- Private Company with revenues up to \$50MM
- Nonprofit CFO – Small (50 or fewer employees)
- Nonprofit CFO – Large (51 or more employees)

- Best Turnaround Specialist**
- Best Growth Manager**

For questions please contact **Melissa Sullenberger** at (732) 246-5737 or melissas@njbiz.com

Congratulations JBL Electric!

*from your friends at Ferreira Construction,
American Pile and Vanguard Energy Partners*

Building the future with pride!

Ferreira is a privately held, large-scale, full-service construction company. Since 1988, Ferreira has enjoyed steady growth through its history. We specialize in transportation infrastructures, commercial buildings, interior renovations, marine work, utilities, solar installation and construction management.

Ferreira and its affiliates strive to be the best in the diverse markets we serve. We are dedicated to constructing quality infrastructure through innovation and sustainability, never compromising our integrity-the foundation of our success for more than two decades. We serve the tri-state from our 42,000 square foot headquarters in New Jersey, the nation's first net-zero electric commercial building. We also maintain satellite offices in New York City and Florida.

Since 1988
FERREIRA
CONSTRUCTION CO., INC.

A Certified MBE Company

www.ferreiraconstruction.com



American Pile and Foundation LLC is New Jersey's premier pile driving specialist, serving the tri-state area. We offer expertise in providing our customers with both innovative and economical foundation design and construction solutions. Our experience in providing excellent service in all facets of foundation construction, includes drilled piers, pile driving, sheeting and shoring, cofferdams, bulkheads, helical and drilled mini-piles and drilled tiebacks.

www.americanpilellc.com



BUILDING **SOLAR SOLUTIONS**

Vanguard Energy Partners, a national solar construction firm, has designed and installed over 50 MW of solar projects since 2003.

These projects include the highest solar array in the world, one of the largest rooftop arrays in North America, and the first commercial net zero electric facility in the United States. With a bonding capacity exceeding \$125M,

Vanguard's project portfolio continues to grow rapidly to meet our clients' needs.

**THE VANGUARD SOLAR ADVANTAGE DELIVERS BOTTOM-LINE RESULTS
BOOST PROFITABILITY + BENEFIT THE ENVIRONMENT = BETTER BUSINESS**

www.vanguardenergypartners.com

#51 SMALL/MEDIUM COMPANY

Compensation Solutions
Wayne, Passaic County



Companies generally prefer their employees stay off social media during the work day. Employees, of course, don't like when their employers restrict access. The two perspectives have reached an accommodation at Compensation Solutions. The company has a computer room where employees can access social media during breaks. Founded in 1997, Compensation Solutions manages employee benefits, human resources, payroll and workers' compensation administration for small and midsized businesses around the country.



#52 SMALL/MEDIUM COMPANY

Marathon Data Systems, LLC
Wall Township, Monmouth County



Employees of Marathon Data Systems had some help after Superstorm Sandy. The company gave every employee an extra week of vacation time and extended disaster assistance to any workers directly affected by the storm. Founded in 1984, Marathon provides mobile and software-as-a-service solutions that help companies manage key operations in a single system. Marathon also offers a range of online marketing software solutions for the pest control, lawn and landscape, and other industries.



#53 SMALL/MEDIUM COMPANY

NPS Pharmaceuticals
Bedminster, Somerset County



A "Sweet and Salty" snack party in the workplace doesn't just happen. It takes effort. At NPS Pharmaceuticals, that effort is overseen by an employee-staffed events committee. The group plans at least one event per month, ranging from the "Sweet and Salty" to the sweet and frozen: an ice cream social. Other events include holiday lunches and visits by food trucks. Founded in 1986, NPS develops biopharmaceutical products for patients with rare disorders and few, if any, therapeutic options.



#54 SMALL/MEDIUM COMPANY

CoWorx Staffing Services
Watchung, Somerset County



People who want to live healthier lives often need a little help figuring out where to start. And that's the kind of help that CoWorx Staffing Services assembled at a recent corporate wellness fair. The fair featured free screenings for blood sugar, cholesterol, blood pressure and body mass index. In addition, a nutritionist spoke to employees who wanted guidance on making healthier food choices. Founded in 1974, CoWorx provides employees for temporary, temporary-to-hire, direct-hire and payroll positions.



We recognize that every member of our team is essential in our ability to make a difference in the lives of our patients.

NPS Pharmaceuticals is a team of talented and motivated professionals who are dedicated to serving patients who suffer from rare disorders. As we grow, we are looking for people who can help us achieve our goal of bringing life-changing medicines to patients who today have few, if any, therapeutic options. NPS offers employees an energized and collaborative environment that is both professionally and personally rewarding.



NPS Pharmaceuticals, 550 Hills Drive, 3rd Floor, Bedminster, NJ 07921 • <http://www.npsph.com>



CONGRATULATIONS

TO OUR SPONSORS AND PARTNERS CHOSEN

NJBIZ BEST PLACES TO WORK IN 2013

AMERIHEALTH NJ

GIBBONS P.C.

HOLY NAME MEDICAL CENTER

INVESTORS BANK

SUNDANCE VACATIONS



Prudential Center

#55 SMALL/MEDIUM COMPANY

World Software Corporation

Glen Rock, Bergen County



A sense of ownership coupled with generous benefits and a satisfying work environment make World Software a great place to work. Founded in 1988, World Software develops and provides document management systems. Its flagship product, Worldox, has been installed at more than 5,000 companies in 50 countries. Employees whose work takes them on overnight travel are eligible for extra paid time off or other incentives. Flexible hours, meanwhile, allow employees to take care of personal demands during the workday.



#56 SMALL/MEDIUM COMPANY

AmeriHealth NJ

Cranbury, Middlesex County



It's often the small but crucial steps toward future health that get lost in the daily shuffle. A program at AmeriHealth NJ—called Time Off for Preventive Screenings, or TOPS—ensures employees have the time to visit their doctors and undergo the routine tests that can make the biggest difference. Founded in 1994, AmeriHealth is an insurer with a portfolio of products, including health insurance, workers' compensation, property and casualty insurance, and management services.



#57 SMALL/MEDIUM COMPANY

Single Throw Internet Marketing

Wall, Monmouth County



Think you could be the CEO? At Single Throw Internet Marketing, exemplary employees don't just think it. Each month, the company selects someone to serve as "CEO for the Day." The temporary boss develops leadership skills and gains an inside look at management, as well as a chance to recognize the contributions of other employees. Founded in 2001, Single Throw is an Internet marketing company whose services include search engine optimization, social media marketing and reputation management.



#58 SMALL/MEDIUM COMPANY

Cowan, Gunteski & Co., P.A.

Toms River, Ocean County



Tokens of appreciation have real value at Cowan, Gunteski & Co. Partners at the accounting firm distribute the tokens to employees as a representation of the financial bonuses they've earned. The tokens also are entered into a raffle for larger prizes given out at an annual firm celebration. Founded in 1982, Cowan serves a wide range of clients in sectors such as construction, energy, health care and technology. In the summer, the firm allows employees to take off every other Friday, or work a half day every Friday.



#59 SMALL/MEDIUM COMPANY

UL EduNeering

Princeton, Mercer County



Sometimes, employees need flexible hours. Other times, they need flexible locations. UL EduNeering offers both. The company's employees can cut short the workday to handle personal business. And, if necessary, they can work from home. Founded in 1981, UL EduNeering develops cloud-computing learning solutions that ensure regulatory compliance, minimize risk and improve business performance. Clients range from Fortune 500 companies to emerging businesses in a range of industries.



#60 SMALL/MEDIUM COMPANY

The Hobart Group

Little Falls, Passaic County



Employees of The Hobart Group cultivate a spirit of teamwork in and out of the office. During the day, they can take advantage of the company's central meeting spaces to work together. At night, they take to the soccer pitch as part of the company's indoor soccer team. Founded in 2003, Hobart is an advertising, sales and marketing firm specializing in the medical and pharmaceutical industries. The company encourages employees to socialize outside work, whether through bowling parties, movie nights or other events.



#61 SMALL/MEDIUM COMPANY

Morris Animal Inn

Morristown, Morris County



Cats and dogs already liven up the workplace at Morris Animal Inn. But the company takes additional steps to inject fun into the day. Games based on employee attendance and performance, even on the busiest days, result in prizes such as TVs, iPads, cameras, GPS systems and other goodies. Founded in 1960, Morris Animal Inn is a luxury pet resort that offers lodging for dogs and cats, a doggie day care service, and professional pet grooming, as well as basic obedience training and a pet boutique.



#62 SMALL/MEDIUM COMPANY

Tele-Data Solutions

Union, Union County



High-tech products fill the shelves at Tele-Data Solutions. But the company puts people at the center of its business. Its employees benefit from a range of workplace benefits, including the use of company vehicles, company-sponsored lunches and breakfasts, and a fully stocked refrigerator. Tele-Data also boasts a robust bonus program that rewards performance as well as steps toward career development. Founded in 1982, Tele-Data provides IT services and communications.



**The Best Clients,
The Best Physicians,
The Best Hospitals,
The Best Place to Work**



QualCare Alliance Networks, Inc.



www.qualcareinc.com
732-562-0833

Like what you do and where you do it.

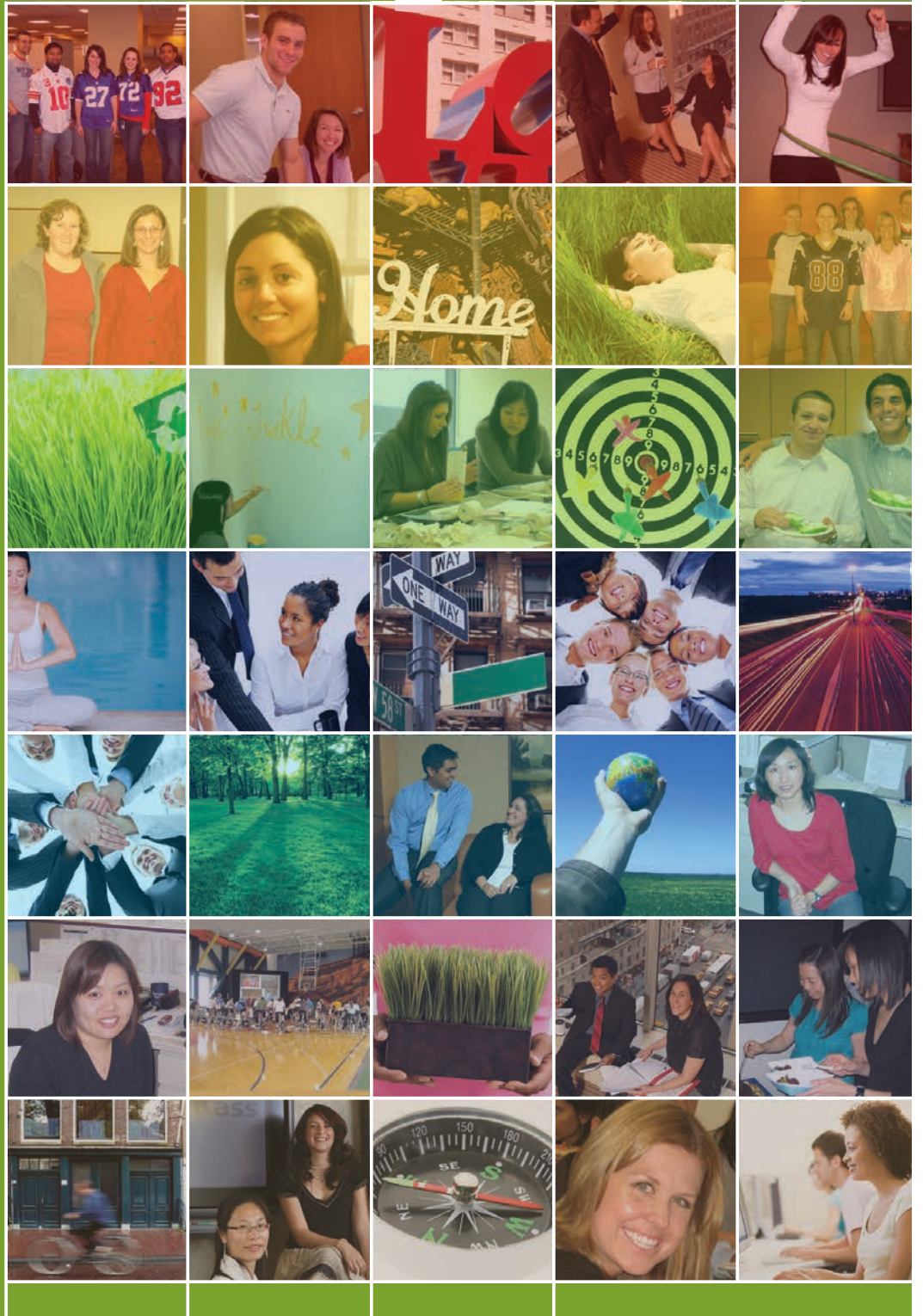
Rothstein Kass is dedicated to maintaining a dynamic and evolutionary workplace experience for our team members. Through cutting-edge initiatives, we demonstrate our commitment to the holistic development of our professionals, being a firm of choice and providing our clients with the highest caliber of talent.

- In-house university
- Women's initiative
- Tuition reimbursement
- Customized work arrangements
- Dedicated corporate citizenship program
- Ranked a Best Company to Work for in New Jersey

At Rothstein Kass, a job well done begets ample rewards.

Our idea of fair trade.

www.rkccareers.com



Audit • Tax • Advisory

Rothstein Kass

Beverly Hills • Boston • Dallas • Denver • Grand Cayman • New York • Roseland • San Francisco • Walnut Creek

An independent firm associated with AGN International Ltd.