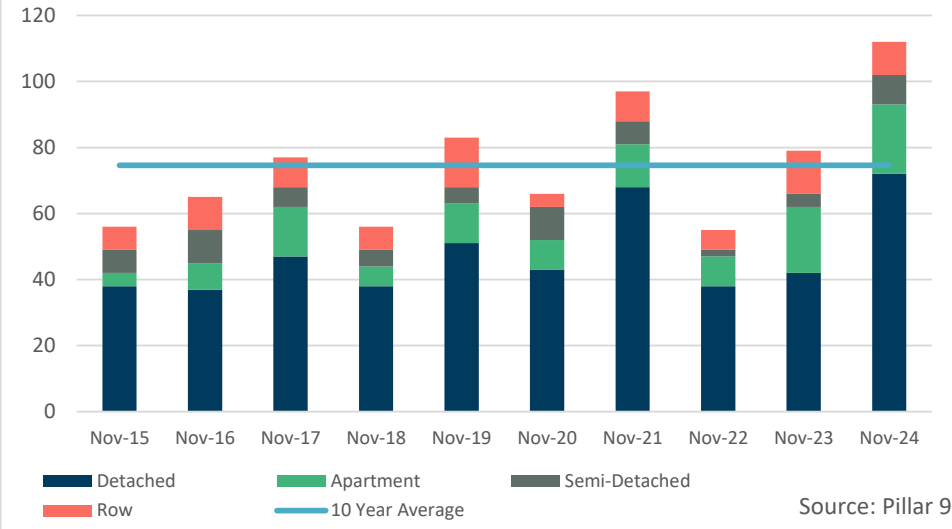


November 2024

Monthly Sales Comparison



*The six month monthly trend is based on a moving average
Data source: Pillar 9

TOTAL RESIDENTIAL AVG PRICE

\$ 372,587

↑ 7.8% Y/Y

Monthly trend*

DETACHED AVG PRICE

\$ 466,846

↓ 3.7% Y/Y

Monthly trend*

SEMI-DETACHED AVG PRICE

\$ 332,710

↓ 24.0% Y/Y

Monthly trend*

ROW AVG PRICE

\$ 253,890

↑ 14.5% Y/Y

Monthly trend*

APARTMENT AVG PRICE

\$ 123,029

↑ 6.5% Y/Y

Monthly trend*

SALES

112

↑ 41.8% Y/Y

↑ 17.9% YTD

NEW LISTINGS

114

↓ 13.0% Y/Y

↑ 2.1% YTD

INVENTORY

391

↓ 5.8% Y/Y

Monthly trend*

MONTHS OF SUPPLY

3.49

↓ 33.5% Y/Y

Monthly trend*

November 2024

November 2024

	Sales		New Listings		Inventory		S/NL	Months of Supply		Average Price	
	Actual	Y/Y%	Actual	Y/Y%	Actual	Y/Y%	Ratio	Actual	Y/Y%	Actual	Y/Y%
Detached	72	71%	58	-28%	256	-22%	124%	3.56	-54%	\$466,846	-4%
Semi-Detached	9	125%	9	13%	24	-11%	100%	2.67	-60%	\$332,710	-24%
Row	10	-23%	17	-37%	47	2%	59%	4.70	33%	\$253,890	15%
Apartment	21	5%	30	100%	64	327%	70%	3.05	306%	\$123,029	6%
Total Residential	112	42%	114	-13%	391	-6%	98%	3.49	-34%	\$372,587	8%

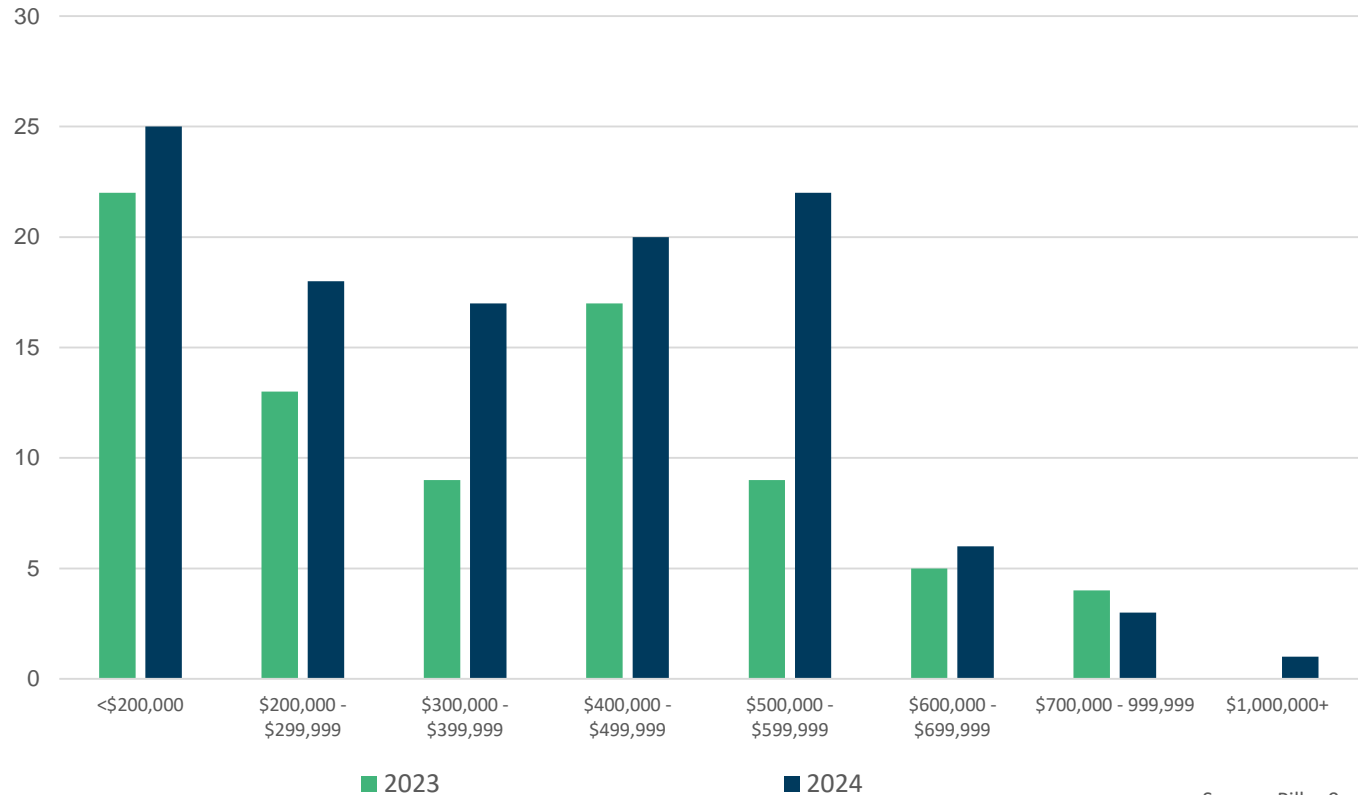
Year-to-Date

November 2024

	Sales		New Listings		Inventory		S/NL	Months of Supply		Average Price	
	Actual	Y/Y%	Actual	Y/Y%	Actual	Y/Y%	Ratio	Actual	Y/Y%	Actual	Y/Y%
Detached	704	27%	1249	-2%	333	-5%	56%	5.20	-25%	\$461,516	0%
Semi-Detached	75	6%	123	-12%	30	-13%	61%	4.41	-18%	\$331,655	-6%
Row	144	8%	223	3%	45	-9%	65%	3.42	-16%	\$218,779	5%
Apartment	215	4%	318	34%	58	14%	68%	2.95	10%	\$128,204	13%
Total Residential	1138	18%	1913	2%	466	-4%	59%	4.50	-18%	\$359,270	4%

Residential Sales by Price Range

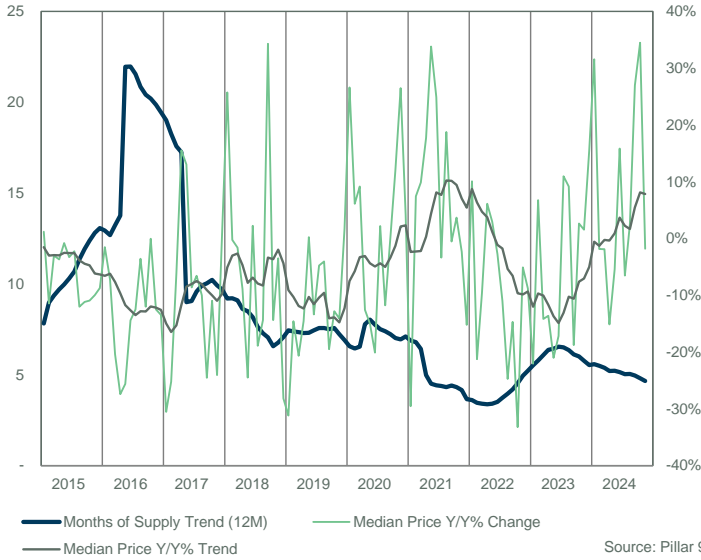
November



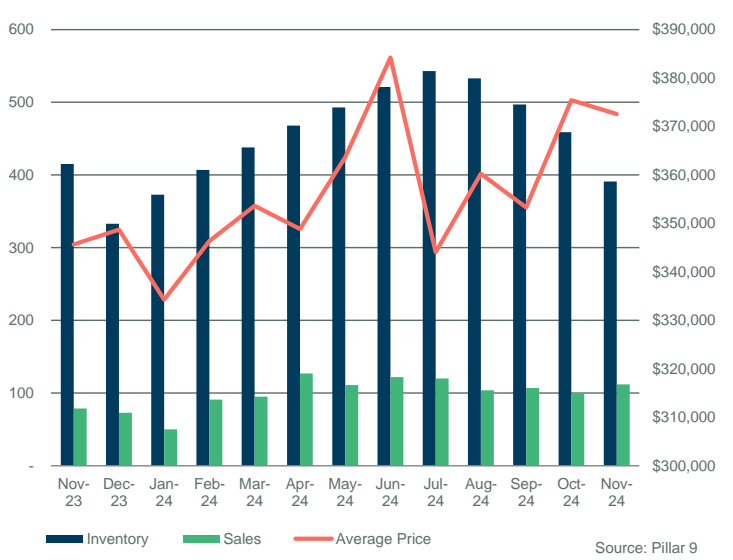
Source: Pillar 9

FORT MCMURRAY

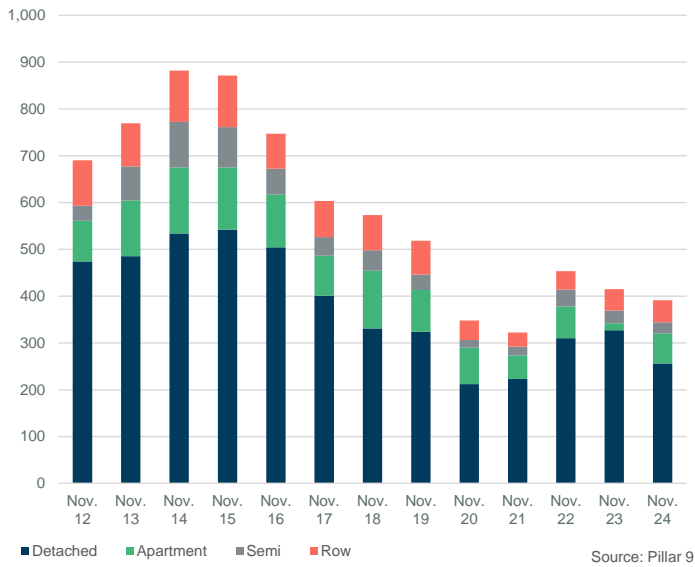
MONTHS OF SUPPLY AND PRICE CHANGE



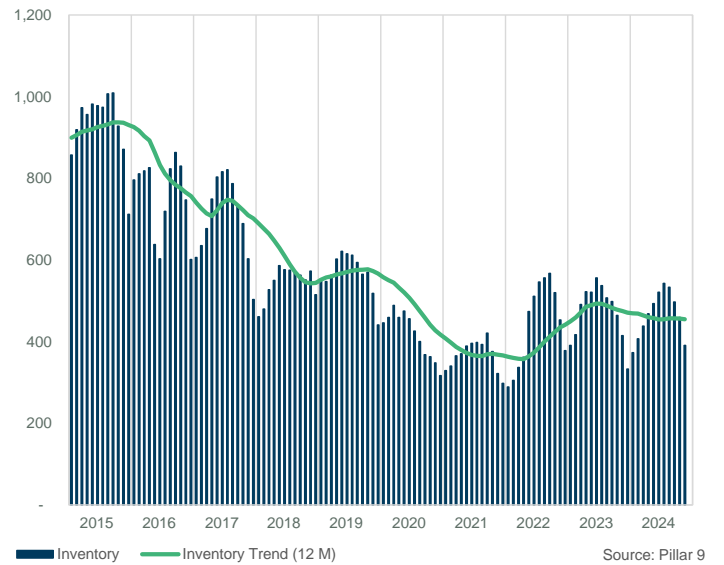
INVENTORY, SALES, AND PRICE



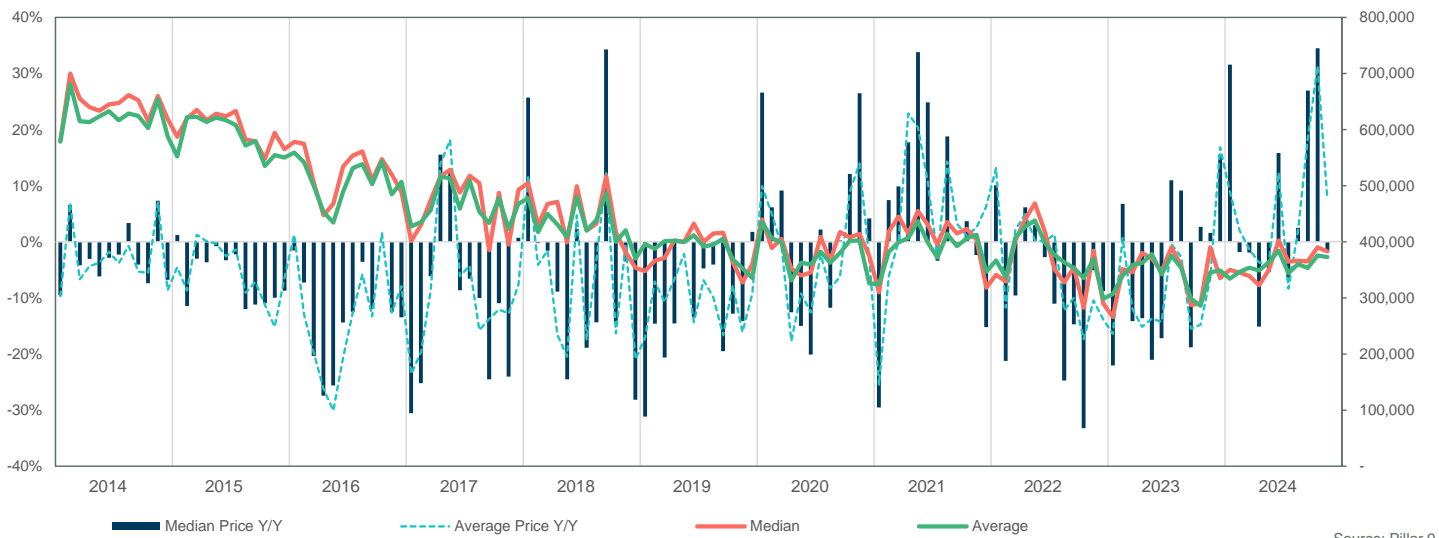
INVENTORY



INVENTORY



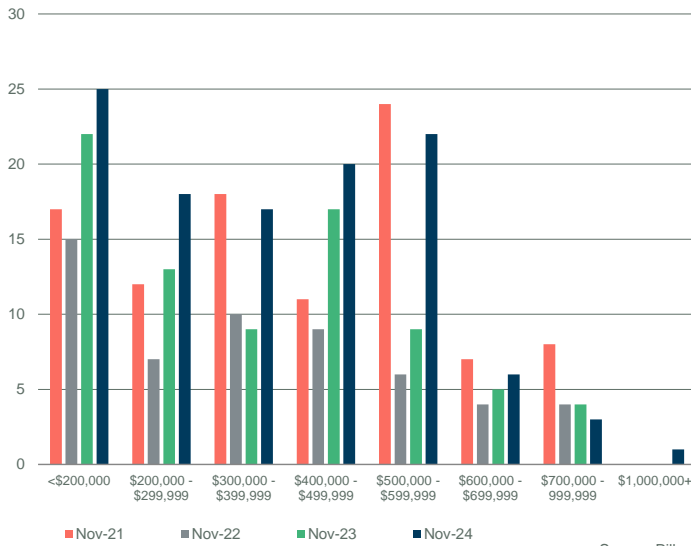
PRICE COMPARISON



FORT MCMURRAY

SALES BY PRICE RANGE

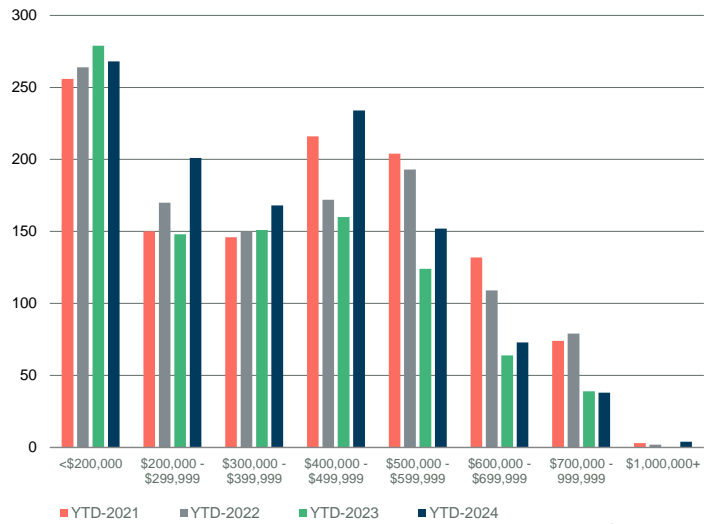
November



Source: Pillar 9

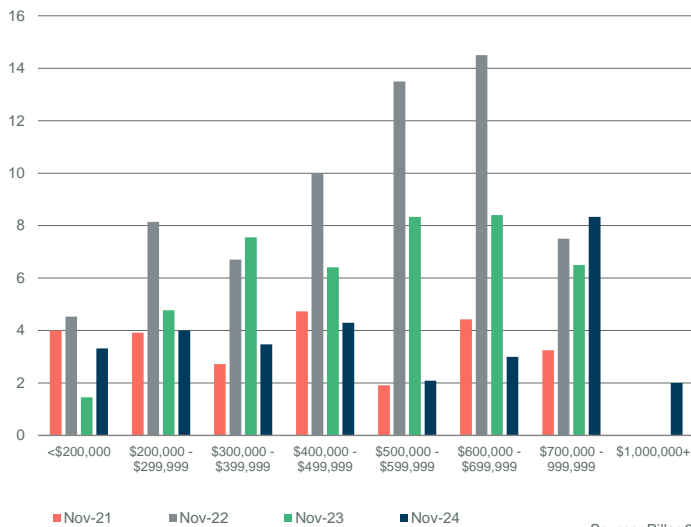
YTD SALES BY PRICE RANGE

YTD-NOV



Source: Pillar 9

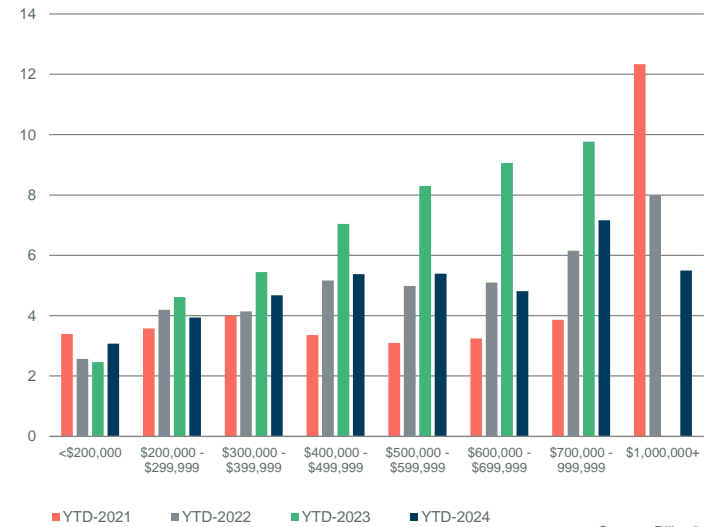
MONTHS OF SUPPLY BY PRICE RANGE



Source: Pillar 9

YTD MONTHS OF SUPPLY BY PRICE RANGE

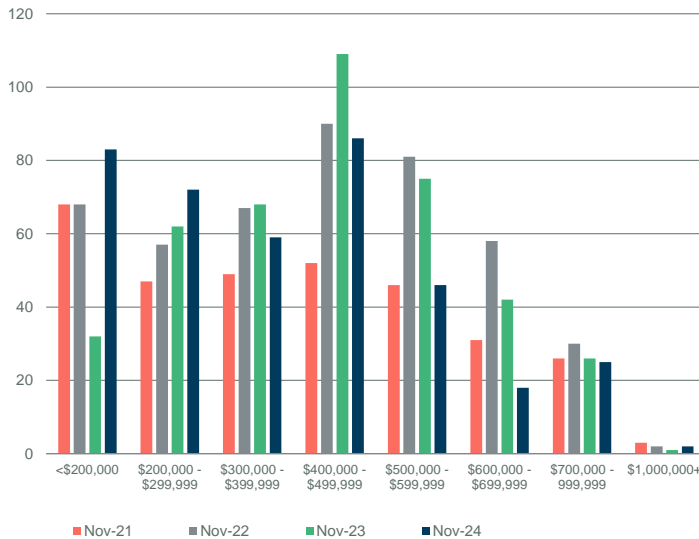
YTD-NOV



Source: Pillar 9

INVENTORY BY PRICE RANGE

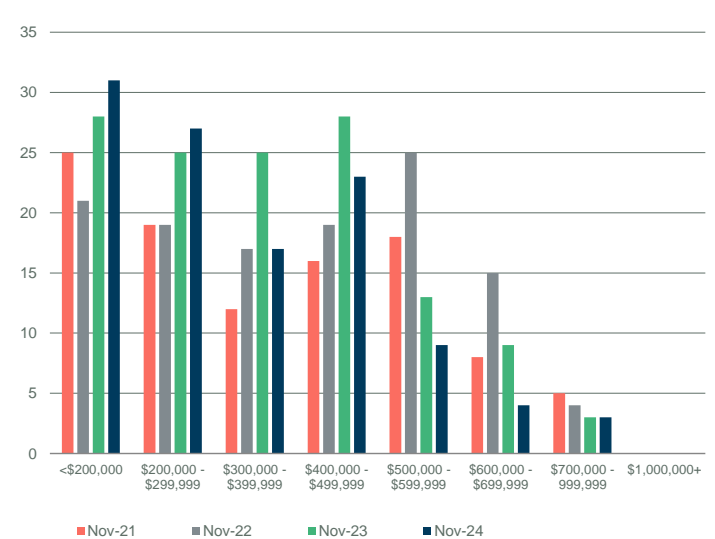
November



Source: Pillar 9

NEW LISTINGS BY PRICE RANGE

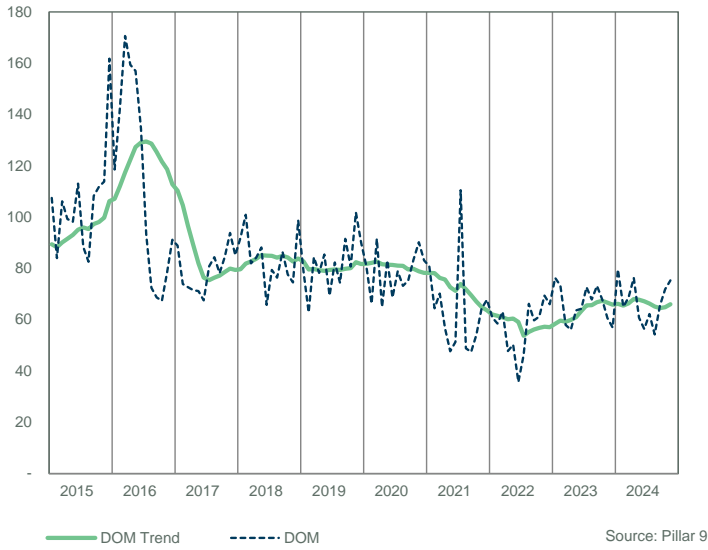
November



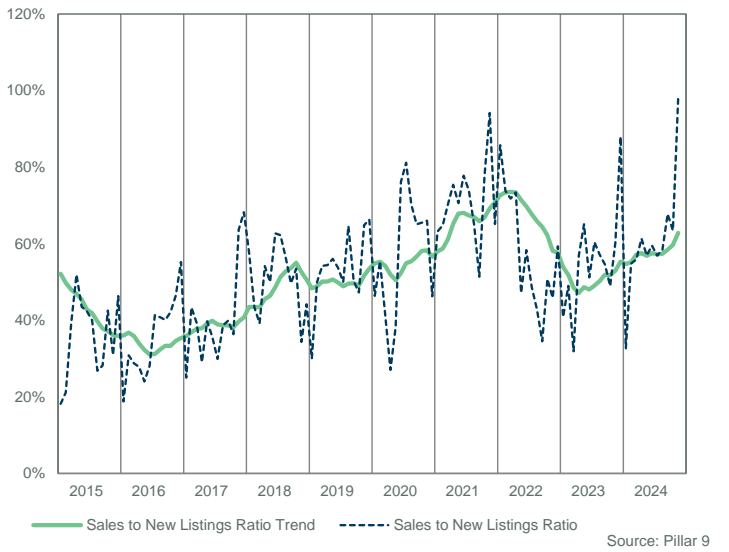
Source: Pillar 9

FORT McMURRAY

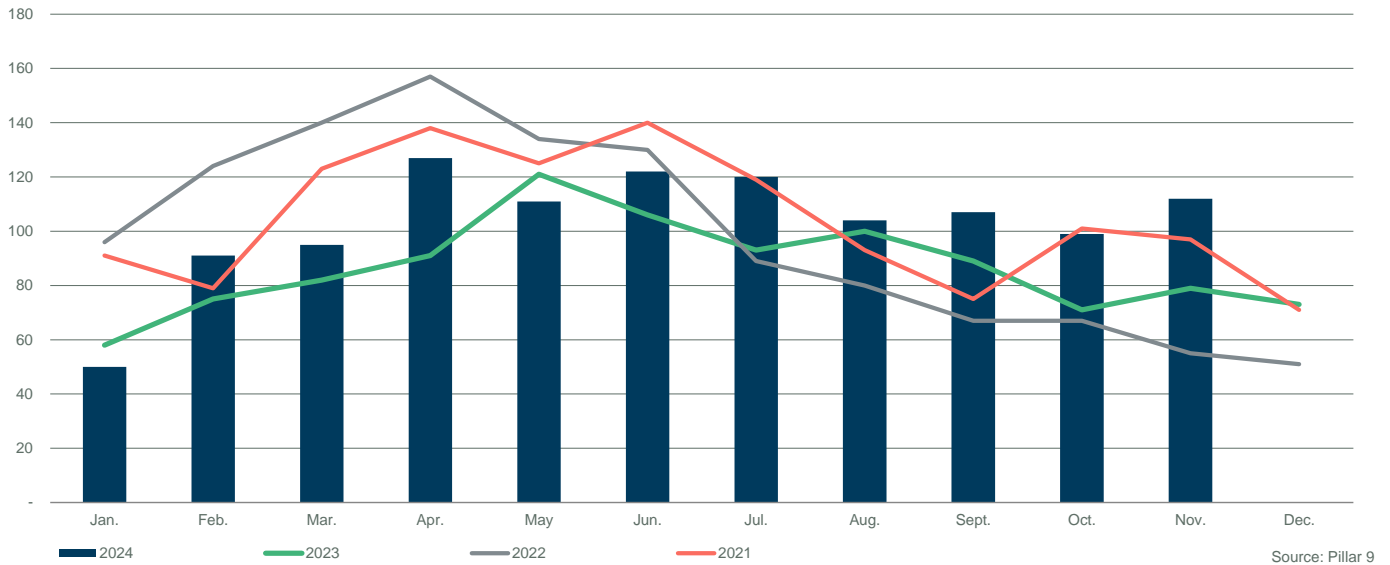
DAYS ON MARKET



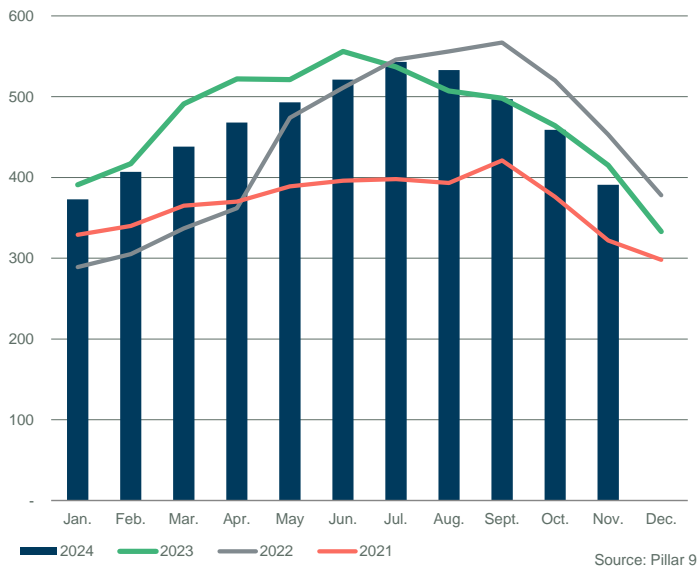
SALES TO NEW LISTINGS RATIO



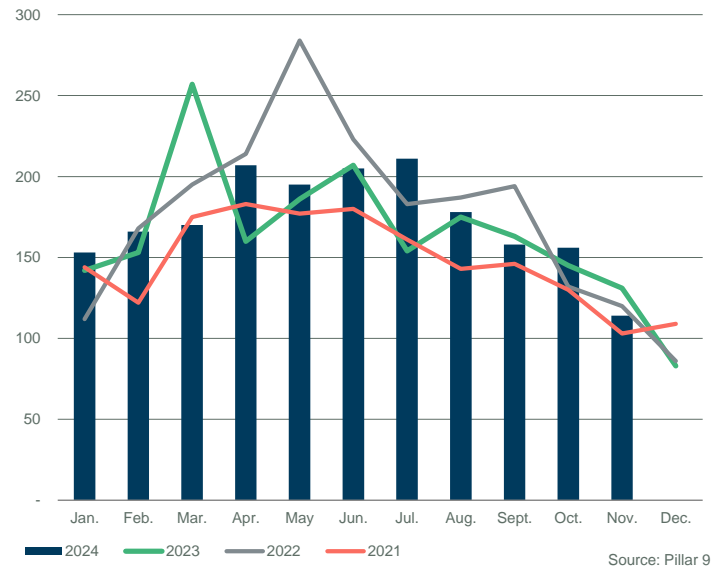
SALES COMPARISON



INVENTORY COMPARISON

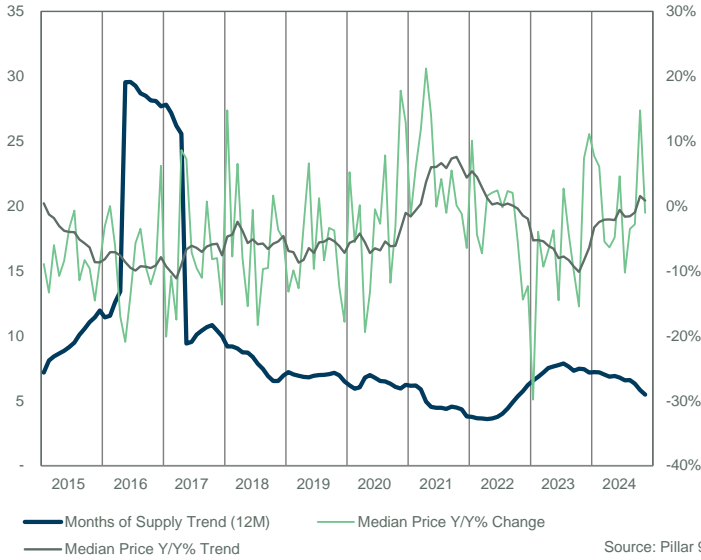


NEW LISTINGS COMPARISON



FORT MCMURRAY

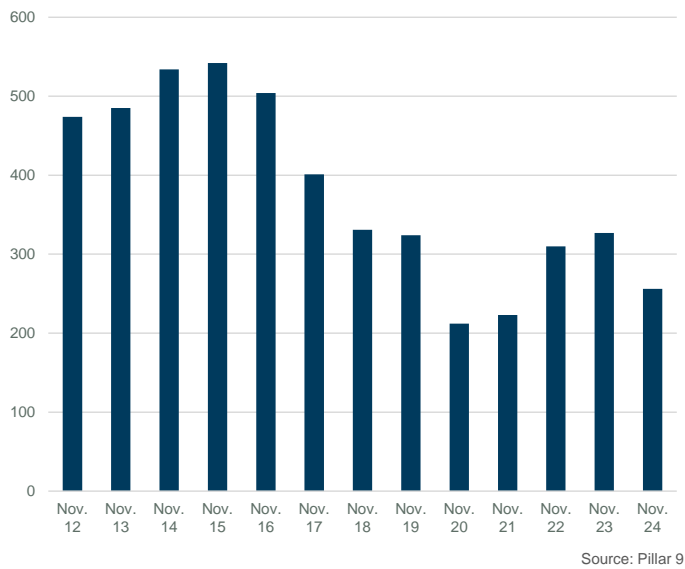
MONTHS OF SUPPLY AND PRICE CHANGE



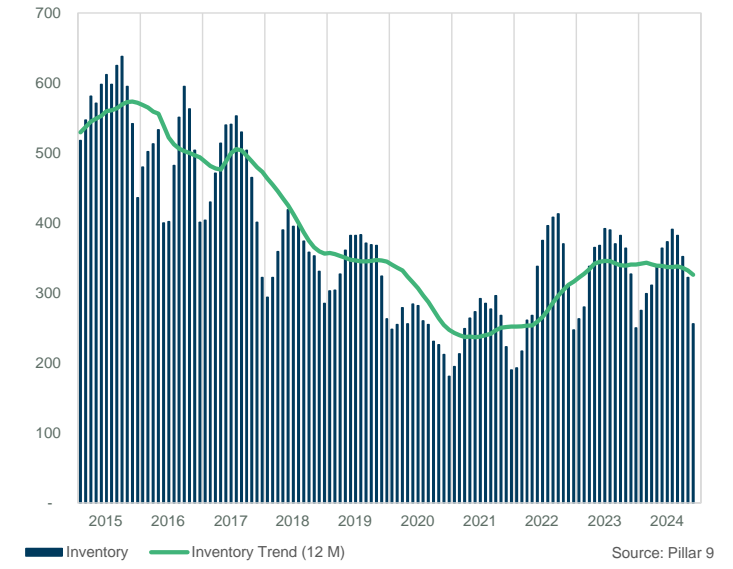
INVENTORY, SALES, AND PRICE



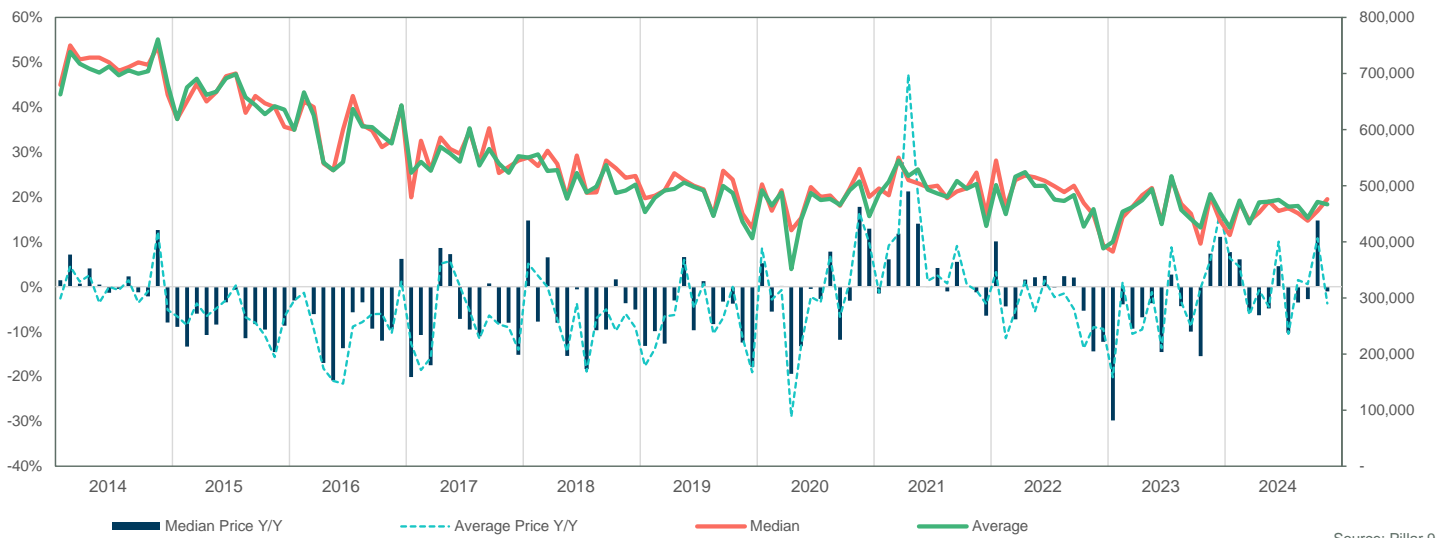
INVENTORY



INVENTORY



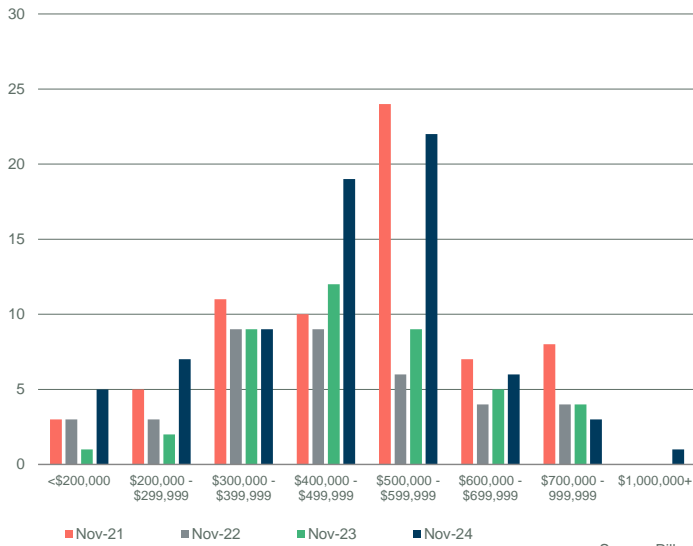
PRICE COMPARISON



FORT MCMURRAY

SALES BY PRICE RANGE

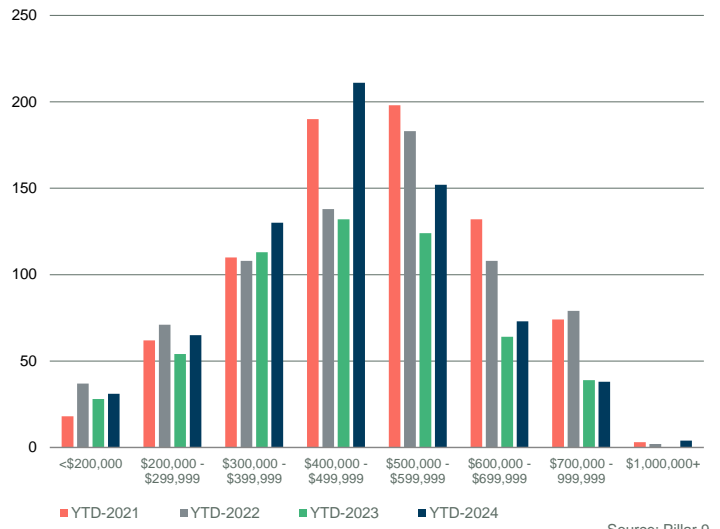
November



Source: Pillar 9

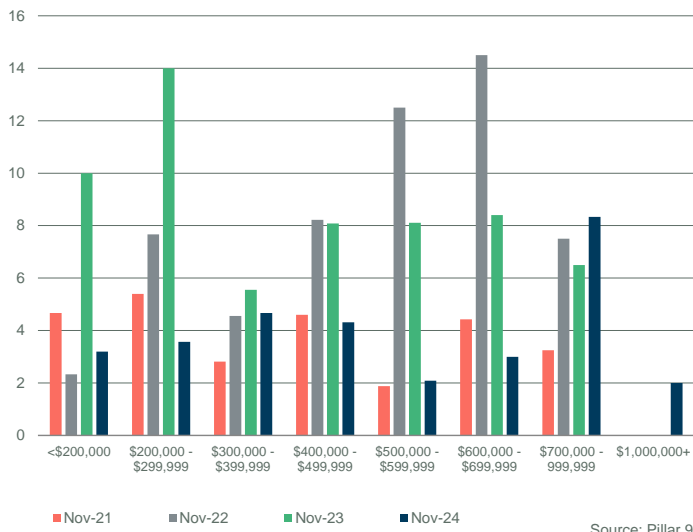
YTD SALES BY PRICE RANGE

YTD-NOV



Source: Pillar 9

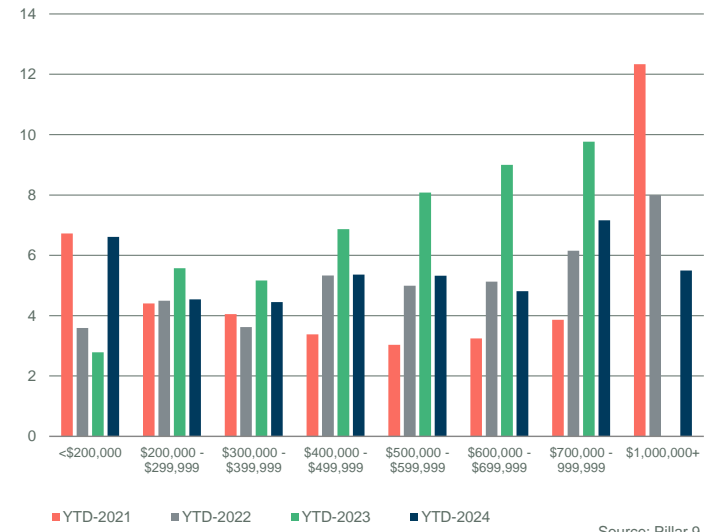
MONTHS OF SUPPLY BY PRICE RANGE



Source: Pillar 9

YTD MONTHS OF SUPPLY BY PRICE RANGE

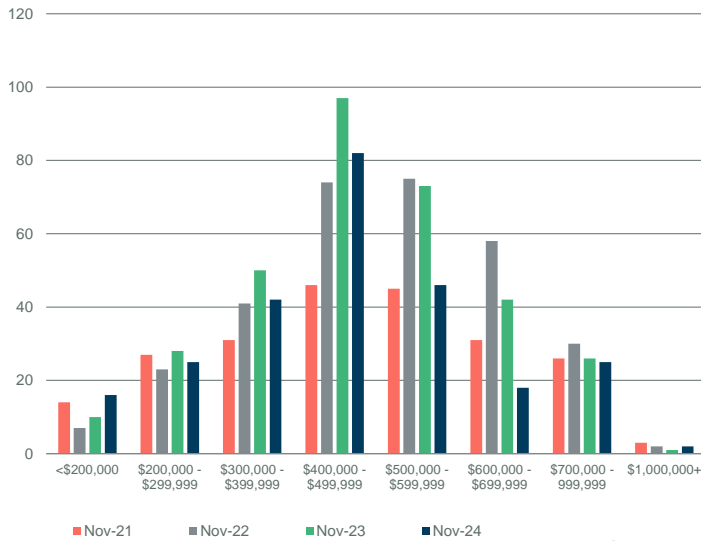
YTD-NOV



Source: Pillar 9

INVENTORY BY PRICE RANGE

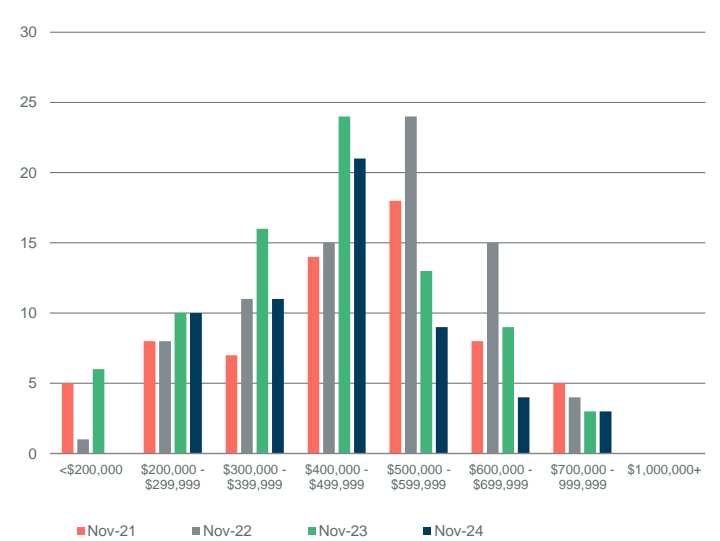
November



Source: Pillar 9

NEW LISTINGS BY PRICE RANGE

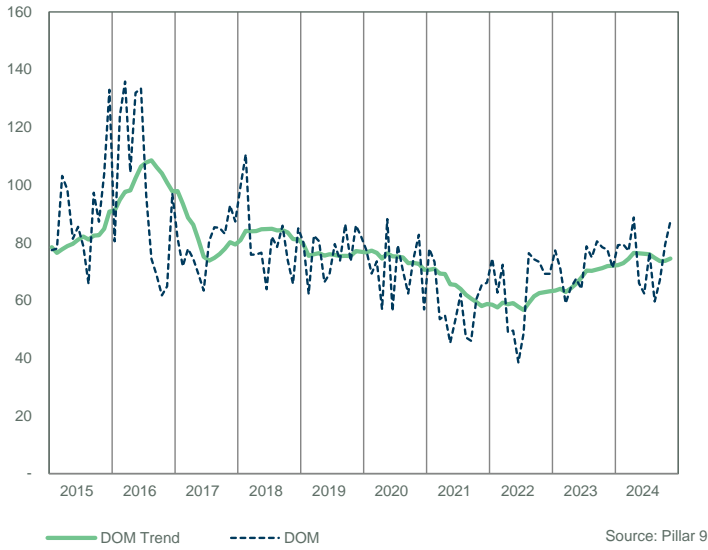
November



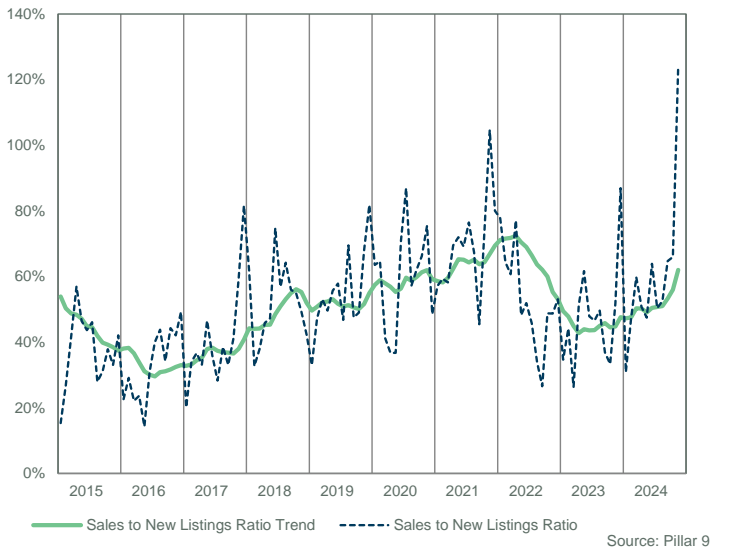
Source: Pillar 9

FORT McMURRAY

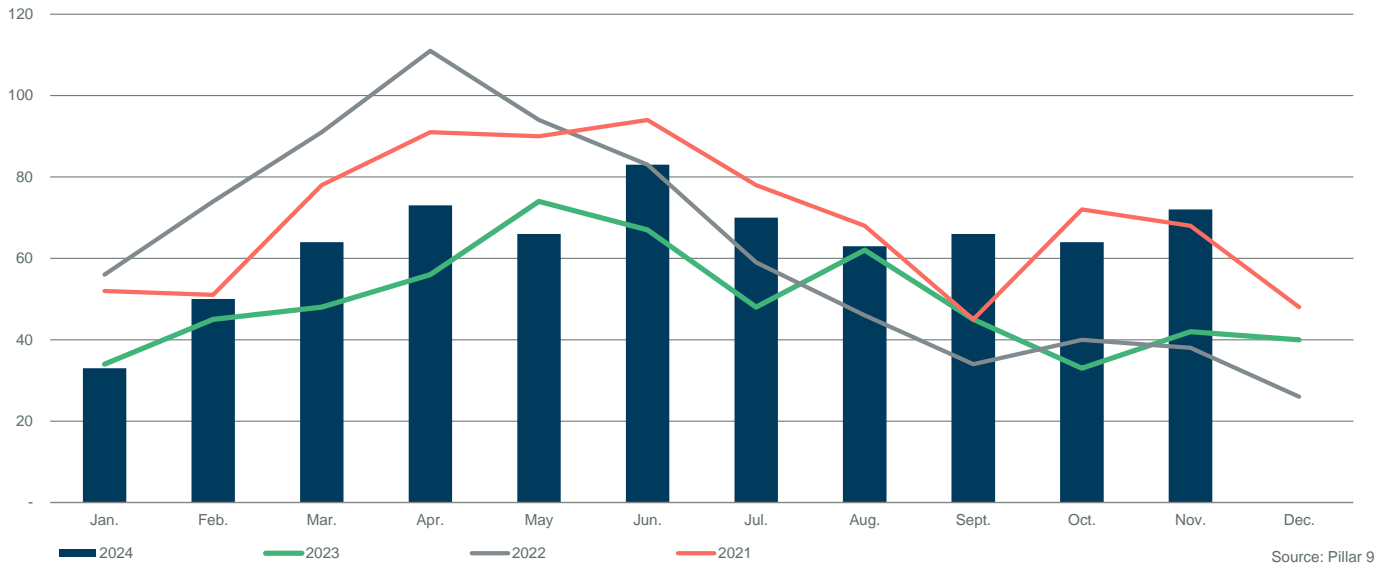
DAYS ON MARKET



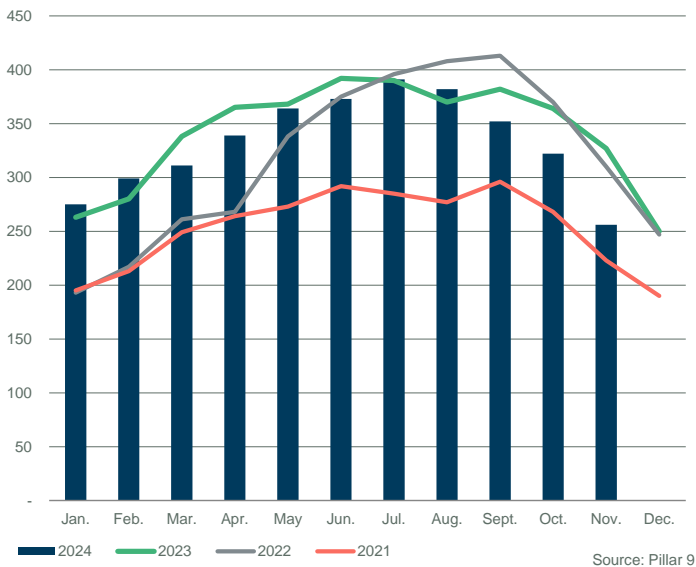
SALES TO NEW LISTINGS RATIO



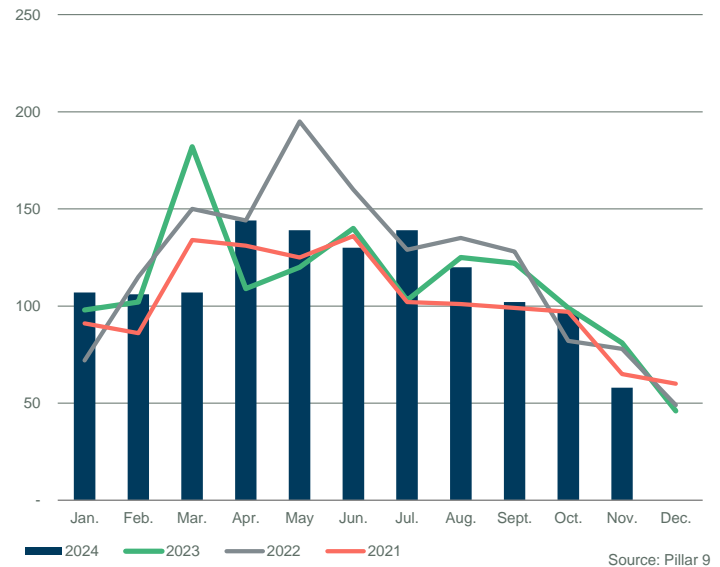
SALES COMPARISON



INVENTORY COMPARISON



NEW LISTINGS COMPARISON



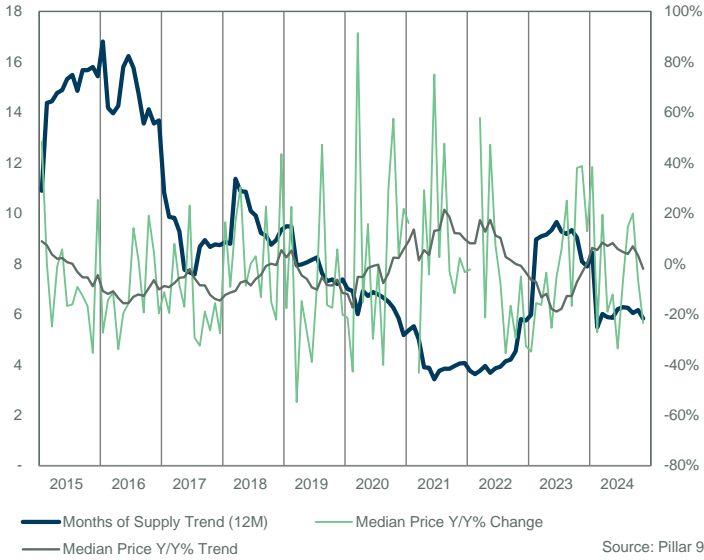
SEMI-DETACHED



FORT MCMURRAY														
Sales	Y/Y%	New Listings	Y/Y%	S/NL Ratio	Inventory	Y/Y%	Months of Supply	DOM	SP/LP	Median Price	Y/Y%	Average Price	Y/Y%	
Jan-20	7	75%	15	36%	0.47	33	-11%	4.71	100	93.2%	338,000	-21.4%	341,714	-17.8%
Feb-20	9	50%	12	50%	0.75	32	19%	3.56	58	94.7%	295,000	-42.7%	330,056	-31.8%
Mar-20	5	150%	14	-7%	0.36	37	0%	7.40	62	96.4%	480,000	91.4%	443,400	76.8%
Apr-20	2	-83%	3	-77%	0.67	28	-18%	14.00	27	91.4%	354,250	-15.1%	354,250	-15.4%
May-20	5	-17%	4	-80%	1.25	25	-44%	5.00	67	95.0%	330,000	15.8%	331,600	10.8%
Jun-20	4	-50%	7	-22%	0.57	27	-31%	6.75	77	92.3%	230,000	-29.8%	230,500	-36.2%
Jul-20	8	0%	7	-22%	1.14	24	-27%	3.00	148	96.0%	361,445	-1.2%	376,786	0.7%
Aug-20	7	-13%	8	-38%	0.88	20	-43%	2.86	86	97.7%	315,000	-40.1%	335,414	-31.0%
Sep-20	6	-14%	6	-40%	1.00	17	-48%	2.83	111	97.0%	480,000	29.7%	447,500	17.7%
Oct-20	6	20%	14	8%	0.43	23	-32%	3.83	105	97.4%	447,500	57.6%	427,833	32.2%
Nov-20	10	100%	4	-60%	2.50	16	-52%	1.60	49	92.2%	322,500	3.4%	316,090	6.3%
Dec-20	2	0%	2	-67%	1.00	13	-55%	6.50	80	98.5%	481,000	21.8%	481,000	21.8%
2020	71	-3%	96	-30%	0.74	25	-29%	5.17	84	95.1%	352,890	-3.2%	360,635	-6.7%
Jan-21	2	-71%	6	-60%	0.33	14	-58%	7.00	84	96.3%	392,500	16.1%	392,500	14.9%
Feb-21	-	-100%	7	-42%	-	19	-41%	-	-	-	-	-	-	-
Mar-21	10	100%	7	-50%	1.43	16	-57%	1.60	46	99.4%	272,500	-43.2%	311,440	-29.8%
Apr-21	7	250%	7	133%	1.00	13	-54%	1.86	73	97.9%	457,500	29.1%	423,786	19.6%
May-21	5	0%	18	350%	0.28	24	-4%	4.80	36	98.2%	316,000	-4.2%	371,700	12.1%
Jun-21	12	200%	10	43%	1.20	21	-22%	1.75	33	99.1%	402,500	75.0%	384,667	66.9%
Jul-21	4	-50%	11	57%	0.36	27	13%	6.75	37	96.9%	370,875	2.6%	372,938	-1.0%
Aug-21	7	0%	8	0%	0.88	26	30%	3.71	67	98.2%	465,000	47.6%	452,286	34.8%
Sep-21	9	50%	12	100%	0.75	26	53%	2.89	70	96.4%	465,000	-3.1%	426,417	-4.7%
Oct-21	5	-17%	8	-43%	0.63	25	9%	5.00	42	95.2%	395,000	-11.7%	372,500	-12.9%
Nov-21	7	-30%	6	50%	1.17	19	19%	2.71	93	95.6%	330,000	2.3%	346,714	9.7%
Dec-21	3	50%	10	400%	0.30	20	54%	6.67	40	94.8%	465,000	-3.3%	400,667	-16.7%
2021	71	0%	110	15%	0.65	21	-5%	4.07	56	97.5%	395,000	11.9%	384,893	6.7%
Jan-22	6	200%	10	67%	0.60	22	57%	3.67	46	96.9%	383,750	-2.2%	369,917	-5.8%
Feb-22	8	-	7	0%	1.14	17	-11%	2.13	59	98.1%	450,000	-	407,750	-
Mar-22	6	-40%	10	43%	0.60	19	19%	3.17	64	97.5%	429,950	57.8%	387,817	24.5%
Apr-22	7	0%	19	171%	0.37	29	123%	4.14	37	97.9%	360,000	-21.3%	385,401	-9.1%
May-22	18	260%	21	17%	0.86	29	21%	1.61	59	98.1%	465,000	47.2%	427,161	14.9%
Jun-22	10	-17%	22	120%	0.45	39	86%	3.90	37	96.9%	432,500	7.5%	407,500	5.9%
Jul-22	6	50%	15	36%	0.40	45	67%	7.50	64	92.2%	342,750	-7.6%	357,583	-4.1%
Aug-22	7	0%	13	63%	0.54	44	69%	6.29	76	95.2%	300,000	-35.5%	372,143	-17.7%
Sep-22	10	11%	11	-8%	0.91	36	38%	3.60	59	92.9%	387,500	-16.7%	365,450	-14.3%
Oct-22	4	-20%	14	75%	0.29	36	44%	9.00	58	95.1%	278,750	-29.4%	307,500	-17.4%
Nov-22	2	-71%	10	67%	0.20	36	89%	18.00	57	94.3%	313,500	-5.0%	313,500	-9.6%
Dec-22	5	67%	8	-20%	0.63	30	50%	6.00	48	91.9%	313,500	-32.6%	338,100	-15.6%
2022	89	25%	160	45%	0.56	32	54%	5.75	55	96.0%	390,000	-1.3%	384,524	-0.1%
Jan-23	5	-17%	15	50%	0.33	32	45%	6.40	83	90.1%	250,000	-34.9%	246,860	-33.3%
Feb-23	1	-88%	9	29%	0.11	38	124%	38.00	189	92.7%	380,000	-15.6%	380,000	-6.8%
Mar-23	9	50%	18	80%	0.50	42	121%	4.67	86	93.8%	360,000	-16.3%	360,611	-7.0%
Apr-23	8	14%	10	-47%	0.80	39	34%	4.88	50	98.2%	347,450	-3.5%	354,600	-8.0%
May-23	9	-50%	16	-24%	0.56	34	17%	3.78	65	95.8%	347,000	-25.4%	344,389	-19.4%
Jun-23	5	-50%	17	-23%	0.29	39	0%	7.80	34	96.7%	410,000	-5.2%	394,400	-3.2%
Jul-23	12	100%	12	-20%	1.00	34	-24%	2.83	54	96.1%	362,450	5.7%	346,533	-3.1%
Aug-23	6	-14%	13	0%	0.46	31	-30%	5.17	67	96.7%	375,000	25.0%	377,833	1.5%
Sep-23	6	-40%	13	18%	0.46	33	-8%	5.50	40	96.5%	322,500	-16.8%	328,983	-10.0%
Oct-23	6	50%	8	-43%	0.75	32	-11%	5.33	60	94.7%	384,750	38.0%	376,750	22.5%
Nov-23	4	100%	8	-20%	0.50	27	-25%	6.75	39	96.6%	435,000	38.8%	437,750	39.6%
Dec-23	7	40%	10	25%	0.70	25	-17%	3.57	54	95.4%	354,000	12.9%	361,929	7.0%
2023	78	-12%	149	-7%	0.52	34	19%	7.89	60	95.6%	360,000	-7.7%	355,287	-7.6%
Jan-24	2	-60%	8	-47%	0.25	26	-19%	13.00	51	98.3%	346,000	38.4%	346,000	40.2%
Feb-24	10	900%	11	22%	0.91	25	-34%	2.50	86	95.2%	277,000	-27.1%	275,690	-27.5%
Mar-24	3	-67%	16	-11%	0.19	33	-21%	11.00	135	97.2%	430,000	19.4%	408,667	13.3%
Apr-24	10	25%	15	50%	0.67	34	-13%	3.40	65	95.6%	281,500	-19.0%	292,420	-17.5%
May-24	10	11%	12	-25%	0.83	34	0%	3.40	68	95.8%	305,000	-12.1%	316,730	-8.0%
Jun-24	3	-40%	11	-35%	0.27	36	-8%	12.00	45	96.1%	272,500	-33.5%	288,833	-26.8%
Jul-24	9	-25%	14	17%	0.64	34	0%	3.78	40	96.5%	336,000	-7.3%	346,944	0.1%
Aug-24	7	17%	10	-23%	0.70	34	10%	4.86	68	96.9%	430,000	14.7%	395,029	4.6%
Sep-24	8	33%	3	-77%	2.67	24	-27%	3.00	101	96.8%	386,550	19.9%	366,888	11.5%
Oct-24	4	-33%	14	75%	0.29	27	-16%	6.75	64	96.5%	359,500	-6.6%	356,000	-5.5%
Nov-24	9	125%	9	13%	1.00	24	-11%	2.67	98	96.5%	333,000	-23.4%	332,710	-24.0%
Dec-24														
2024	75	6%	123	-12%	0.61	30	-13%	6.03	74	96.3%	316,500	-13.1%	333,014	-6.5%

FORT MCMURRAY

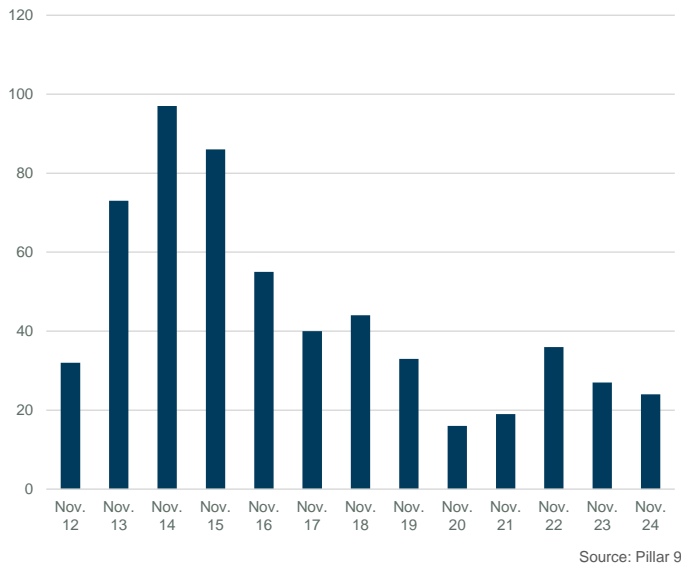
MONTHS OF SUPPLY AND PRICE CHANGE



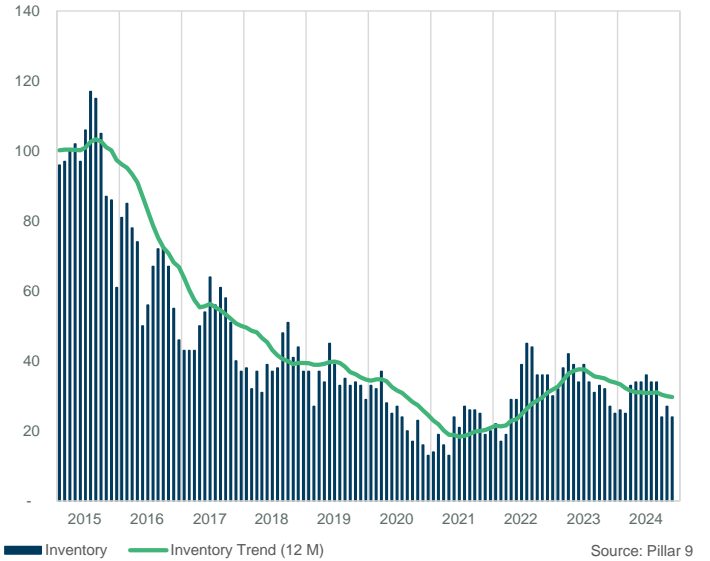
INVENTORY, SALES, AND PRICE



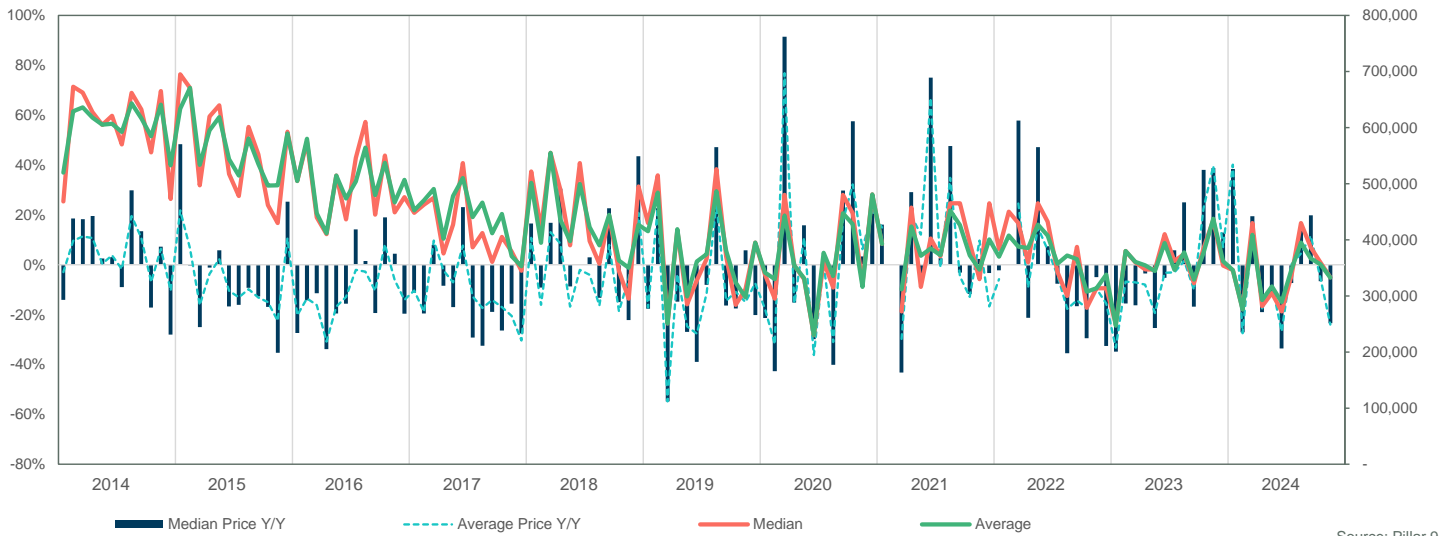
INVENTORY



INVENTORY



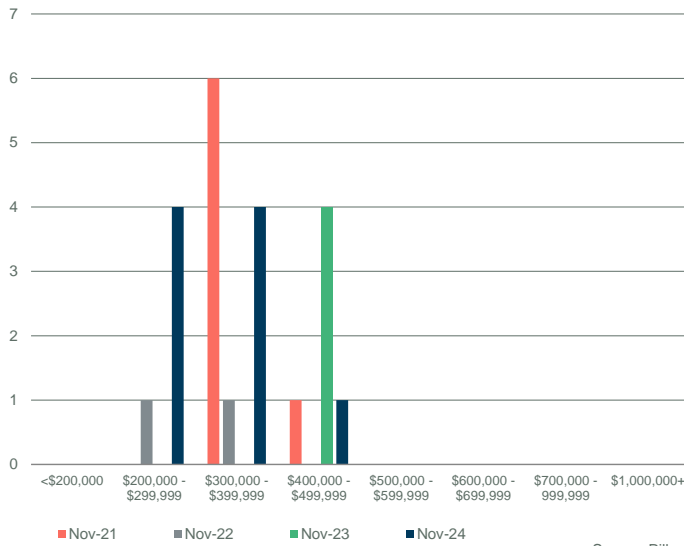
PRICE COMPARISON



FORT MCMURRAY

SALES BY PRICE RANGE

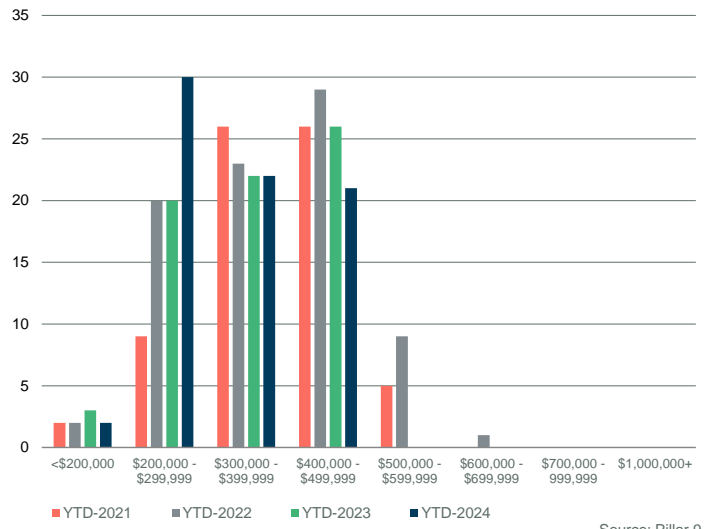
November



Source: Pillar 9

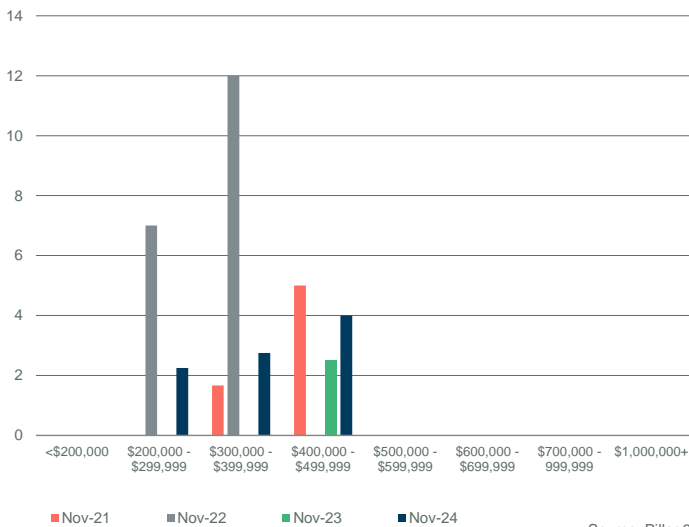
YTD SALES BY PRICE RANGE

YTD-NOV



Source: Pillar 9

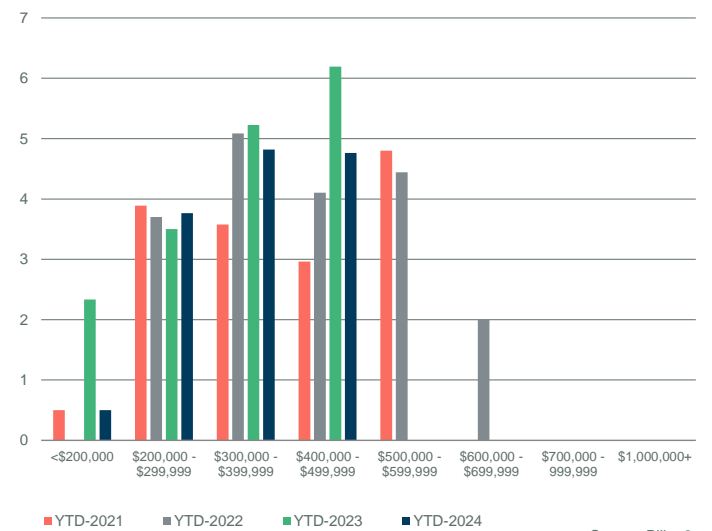
MONTHS OF SUPPLY BY PRICE RANGE



Source: Pillar 9

YTD MONTHS OF SUPPLY BY PRICE RANGE

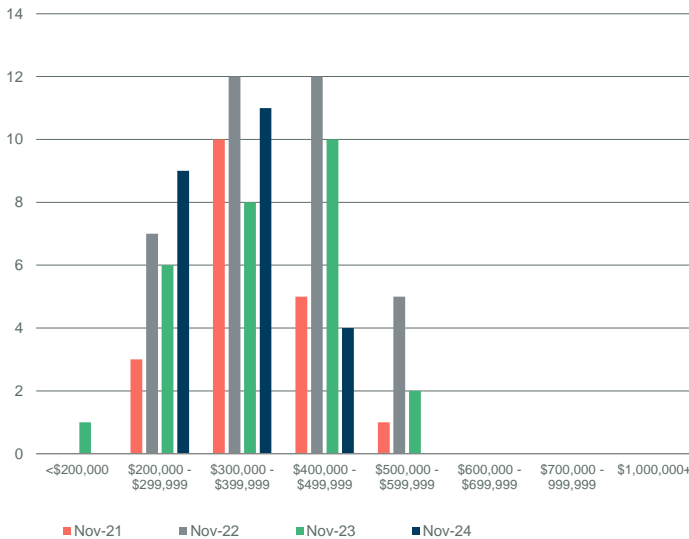
YTD-NOV



Source: Pillar 9

INVENTORY BY PRICE RANGE

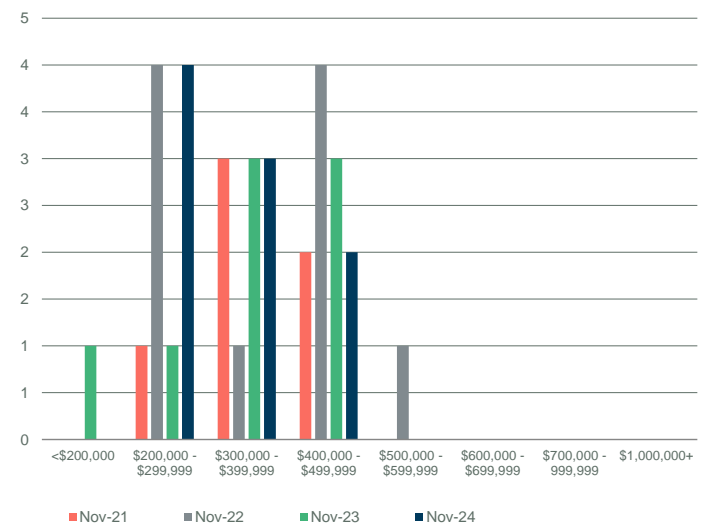
November



Source: Pillar 9

NEW LISTINGS BY PRICE RANGE

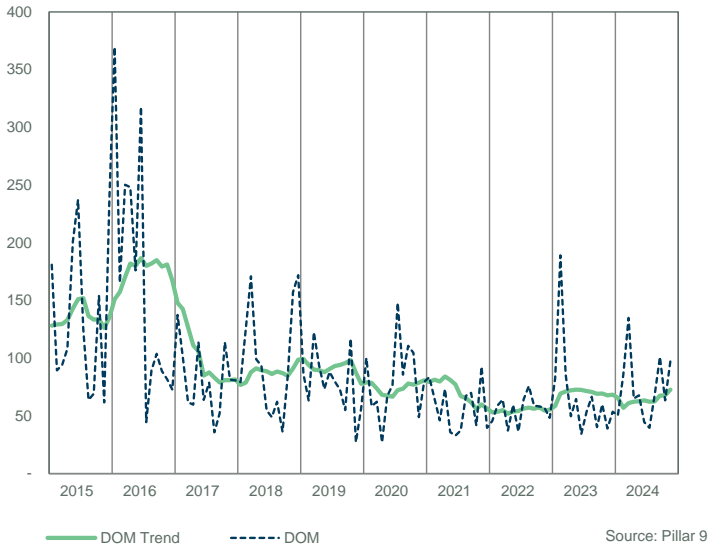
November



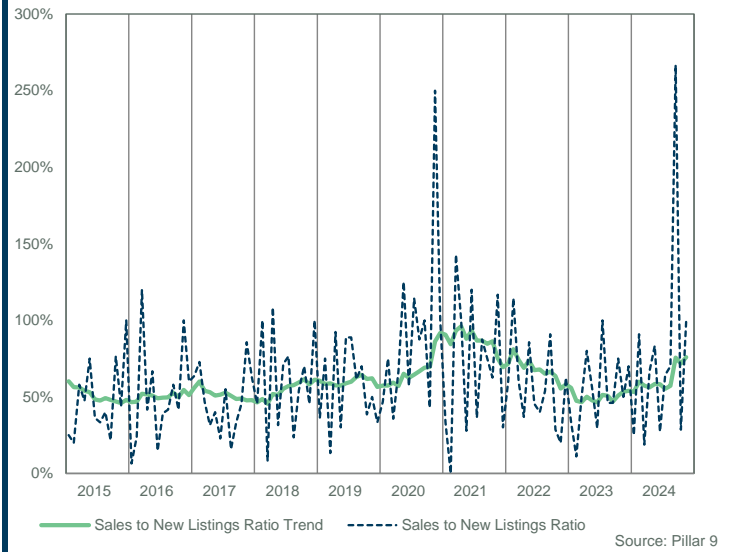
Source: Pillar 9

FORT MCMURRAY

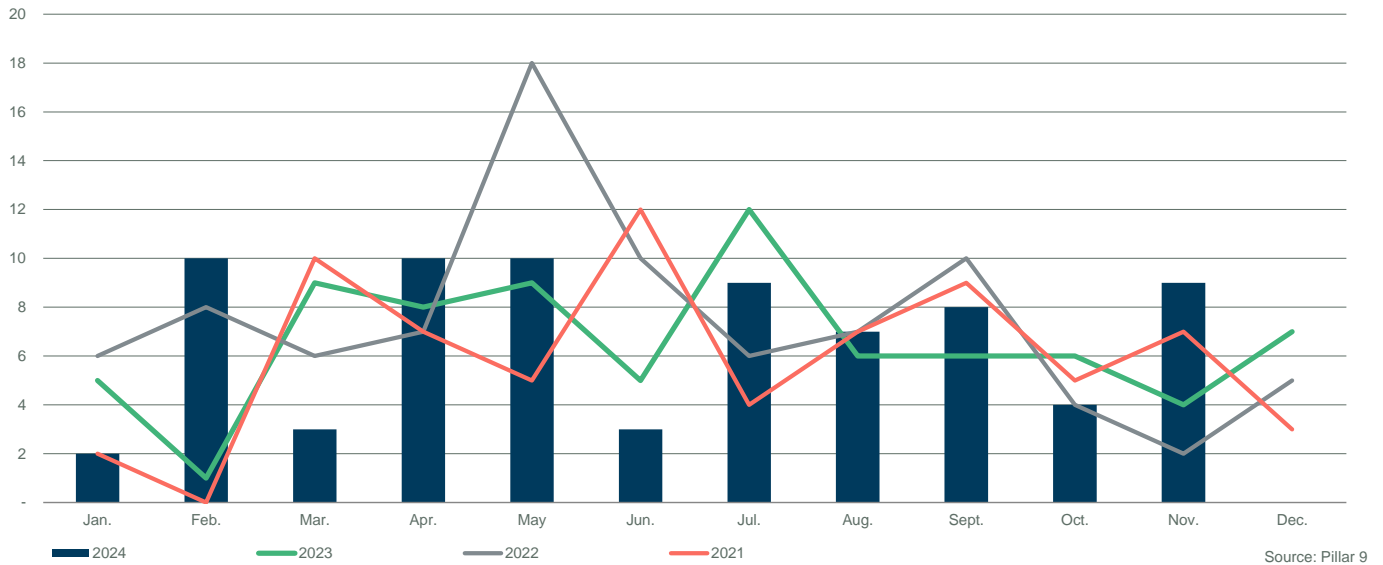
DAYS ON MARKET



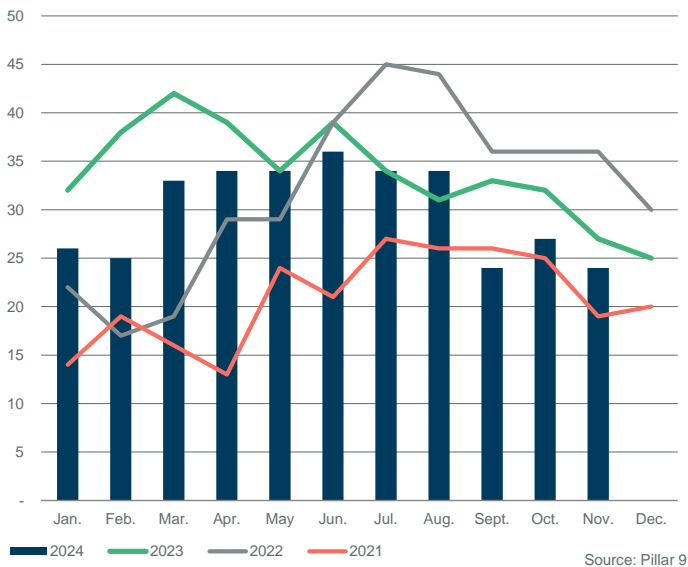
SALES TO NEW LISTINGS RATIO



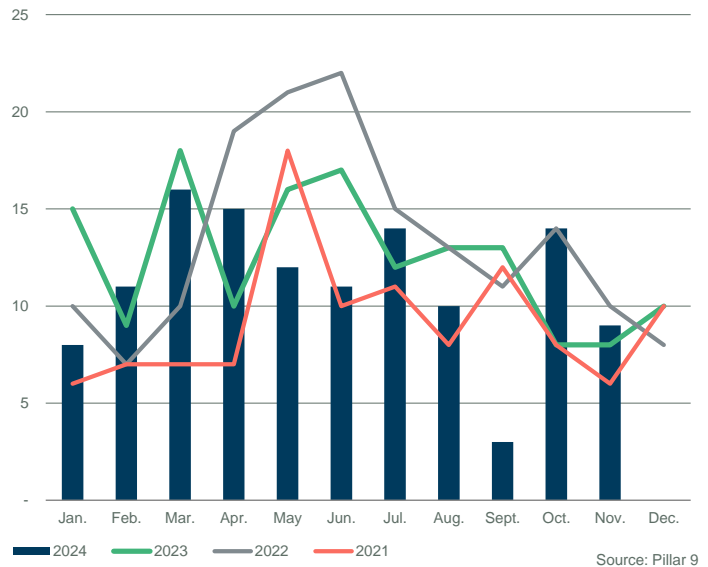
SALES COMPARISON



INVENTORY COMPARISON



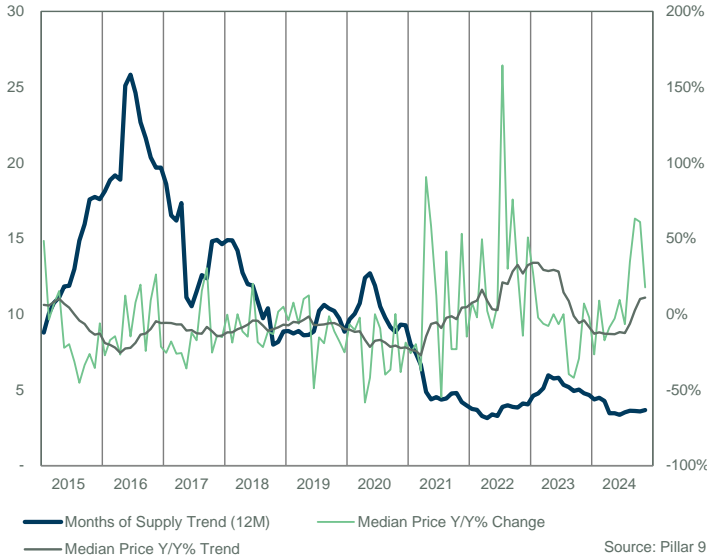
NEW LISTINGS COMPARISON



FORT MCMURRAY														
	Sales	Y/Y%	New Listings	Y/Y%	S/NL Ratio	Inventory	Y/Y%	Months of Supply	DOM	SP/LP	Median Price	Y/Y%	Average Price	Y/Y%
Jan-20	4	-50%	25	0%	0.16	79	-1%	19.75	79	97.8%	262,500	-6.7%	271,500	2.1%
Feb-20	8	-58%	14	-65%	0.57	74	-16%	9.25	49	92.9%	251,000	-10.4%	234,256	-15.2%
Mar-20	5	-58%	15	25%	0.33	75	-7%	15.00	107	95.3%	275,000	-2.2%	273,300	-3.4%
Apr-20	3	-83%	13	-41%	0.23	73	-4%	24.33	139	91.4%	118,000	-58.3%	195,000	-24.2%
May-20	8	-43%	18	-33%	0.44	74	-8%	9.25	69	93.3%	155,000	-42.0%	183,063	-26.1%
Jun-20	25	257%	16	-16%	1.56	56	-33%	2.24	82	93.2%	185,000	0.0%	206,678	2.2%
Jul-20	16	300%	22	29%	0.73	57	-30%	3.56	50	93.3%	192,000	-9.4%	218,469	6.7%
Aug-20	15	114%	6	-73%	2.50	45	-45%	3.00	75	90.8%	145,000	-39.8%	170,340	-35.7%
Sep-20	12	100%	13	-7%	0.92	45	-34%	3.75	113	92.2%	166,500	-36.6%	177,692	-28.7%
Oct-20	12	9%	10	-69%	1.20	41	-48%	3.42	97	94.7%	230,000	0.2%	222,750	4.3%
Nov-20	4	-73%	13	-35%	0.31	42	-42%	10.50	272	89.2%	160,000	-38.2%	171,975	-34.4%
Dec-20	6	-33%	8	-33%	0.75	43	-38%	7.17	134	90.8%	178,950	-18.7%	170,900	-11.2%
2020	118	-9%	173	-34%	0.68	59	-25%	9.27	90	92.9%	192,000	-30.1%	204,341	-18.2%
Jan-21	10	150%	17	-32%	0.59	46	-42%	4.60	58	81.8%	195,000	-25.7%	167,600	-38.3%
Feb-21	16	100%	9	-36%	1.78	37	-50%	2.31	57	93.7%	201,250	-19.8%	187,400	-20.0%
Mar-21	7	40%	12	-20%	0.58	40	-47%	5.71	34	100.3%	172,500	-37.3%	158,386	-42.0%
Apr-21	14	367%	19	46%	0.74	41	-44%	2.93	66	94.4%	224,950	90.6%	220,421	13.0%
May-21	12	50%	11	-39%	1.09	39	-47%	3.25	36	98.1%	245,000	58.1%	239,375	30.8%
Jun-21	10	-60%	15	-6%	0.67	41	-27%	4.10	67	94.9%	207,500	12.2%	214,690	3.9%
Jul-21	22	38%	20	-9%	1.10	37	-35%	1.68	352	85.2%	87,000	-54.7%	165,291	-24.3%
Aug-21	9	-40%	11	83%	0.82	35	-22%	3.89	46	95.2%	205,000	41.4%	200,333	17.6%
Sep-21	5	-58%	10	-23%	0.50	38	-16%	7.60	60	99.7%	128,000	-23.1%	158,020	-11.1%
Oct-21	8	-33%	10	0%	0.80	30	-27%	3.75	45	95.0%	177,000	-23.0%	187,363	-15.9%
Nov-21	9	125%	13	0%	0.69	30	-29%	3.33	53	96.3%	245,000	53.1%	221,189	28.6%
Dec-21	8	33%	17	113%	0.47	36	-16%	4.50	58	100.3%	152,500	-14.8%	182,313	6.7%
2021	130	10%	164	-5%	0.79	38	-33%	3.97	104	93.3%	201,750	5.1%	192,815	-5.6%
Jan-22	15	50%	12	-29%	1.25	29	-37%	1.93	48	96.9%	210,000	7.7%	201,267	20.1%
Feb-22	14	-13%	13	44%	1.08	23	-38%	1.64	56	97.8%	197,000	-2.1%	199,721	6.6%
Mar-22	18	157%	12	0%	1.50	15	-63%	0.83	48	97.7%	258,000	49.6%	255,598	61.4%
Apr-22	12	-14%	13	-32%	0.92	14	-66%	1.17	32	97.6%	229,950	2.2%	225,742	2.4%
May-22	6	-50%	31	182%	0.19	37	-5%	6.17	27	94.1%	222,500	-9.2%	258,000	7.8%
Jun-22	14	40%	22	47%	0.64	41	0%	2.93	25	99.7%	220,000	6.0%	229,333	6.8%
Jul-22	6	-73%	21	5%	0.29	53	43%	8.83	34	94.2%	230,000	164.4%	217,817	31.8%
Aug-22	10	11%	13	18%	0.77	51	46%	5.10	46	97.3%	266,450	30.0%	268,340	33.9%
Sep-22	9	80%	27	170%	0.33	57	50%	6.33	50	95.4%	225,000	75.8%	229,300	45.1%
Oct-22	14	75%	13	30%	1.08	46	53%	3.29	40	96.4%	226,000	27.7%	226,289	20.8%
Nov-22	6	-33%	12	-8%	0.50	39	30%	6.50	83	92.6%	210,000	-14.3%	225,417	1.9%
Dec-22	9	13%	11	-35%	0.82	35	-3%	3.89	89	94.5%	230,000	50.8%	231,822	27.2%
2022	133	2%	200	22%	0.67	37	1%	4.05	47	96.7%	225,100	11.6%	229,657	19.1%
Jan-23	5	-67%	18	50%	0.28	44	52%	8.80	91	94.1%	267,000	27.1%	234,300	16.4%
Feb-23	14	0%	19	46%	0.74	47	104%	3.36	73	95.2%	192,500	-2.3%	215,011	7.7%
Mar-23	10	-44%	20	67%	0.50	49	227%	4.90	59	96.7%	241,750	-6.3%	220,450	-13.8%
Apr-23	5	-58%	19	46%	0.26	58	314%	11.60	60	95.9%	212,000	-7.8%	227,100	0.6%
May-23	16	167%	23	-26%	0.70	58	57%	3.63	49	95.4%	222,500	0.0%	228,041	-11.6%
Jun-23	18	29%	24	9%	0.75	60	46%	3.33	64	97.7%	205,500	-6.6%	209,256	-8.8%
Jul-23	15	150%	17	-19%	0.88	51	-4%	3.40	93	97.7%	230,000	0.0%	235,983	8.3%
Aug-23	15	50%	20	54%	0.75	49	-4%	3.27	58	94.3%	161,000	-39.6%	178,307	-33.6%
Sep-23	13	44%	12	-56%	1.08	43	-25%	3.31	55	95.1%	130,500	-42.0%	149,469	-34.8%
Oct-23	9	-36%	17	31%	0.53	39	-15%	4.33	66	96.2%	160,000	-29.2%	203,706	-10.0%
Nov-23	13	117%	27	125%	0.48	46	18%	3.54	41	95.6%	225,000	7.1%	221,662	-1.7%
Dec-23	15	67%	11	0%	1.36	38	9%	2.53	36	95.3%	225,000	-2.2%	243,893	5.2%
2023	148	11%	227	14%	0.65	49	65%	4.67	60	95.9%	206,650	-8.2%	212,620	-7.4%
Jan-24	8	60%	21	17%	0.38	43	-2%	5.38	112	96.0%	196,250	-26.5%	188,564	-19.5%
Feb-24	11	-21%	24	26%	0.46	51	9%	4.64	48	96.5%	210,000	9.1%	225,900	5.1%
Mar-24	17	70%	10	-50%	1.70	39	-20%	2.29	48	95.6%	200,000	-17.3%	206,262	-6.4%
Apr-24	20	300%	21	11%	0.95	37	-36%	1.85	78	95.5%	193,750	-8.6%	205,725	-9.4%
May-24	10	-38%	17	-26%	0.59	37	-36%	3.70	48	95.2%	216,250	-2.8%	212,220	-6.9%
Jun-24	19	6%	25	4%	0.76	39	-35%	2.05	50	97.1%	225,000	9.5%	231,895	10.8%
Jul-24	9	-40%	23	35%	0.39	48	-6%	5.33	38	96.7%	215,000	-6.5%	225,144	-4.6%
Aug-24	12	-20%	26	30%	0.46	54	10%	4.50	40	97.3%	216,500	34.5%	203,617	14.2%
Sep-24	16	23%	22	83%	0.73	52	21%	3.25	59	95.3%	213,000	63.2%	219,500	46.9%
Oct-24	12	33%	17	0%	0.71	46	18%	3.83	67	96.3%	257,500	60.9%	236,750	16.2%
Nov-24	10	-23%	17	-37%	0.59	47	2%	4.70	42	97.7%	265,000	17.8%	253,890	14.5%
Dec-24														
2024	144	8%	223	3%	0.65	45	-7%	3.77	57	96.2%	217,001	7.2%	219,450	4.6%

FORT MCMURRAY

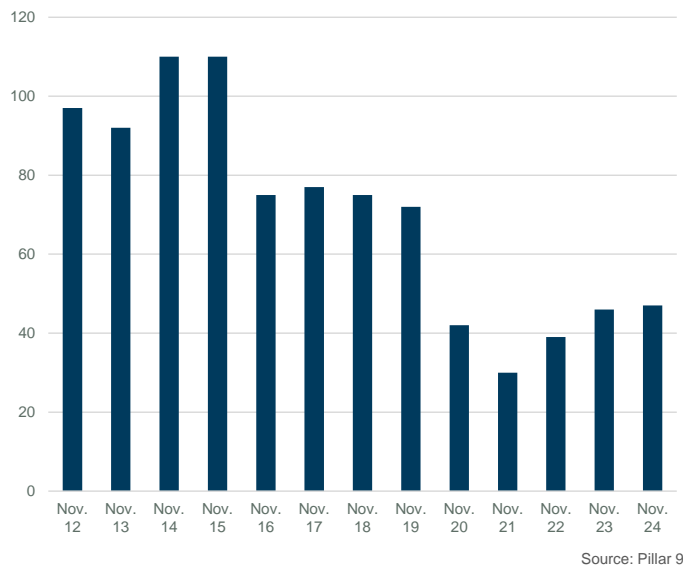
MONTHS OF SUPPLY AND PRICE CHANGE



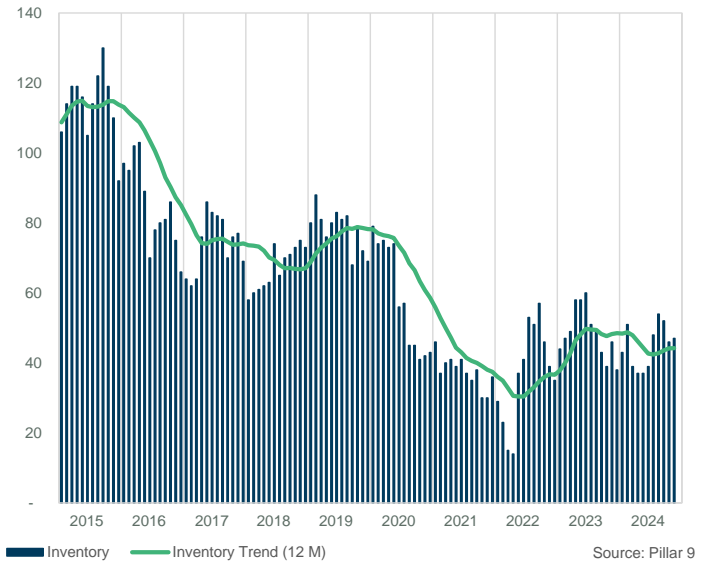
INVENTORY, SALES, AND PRICE



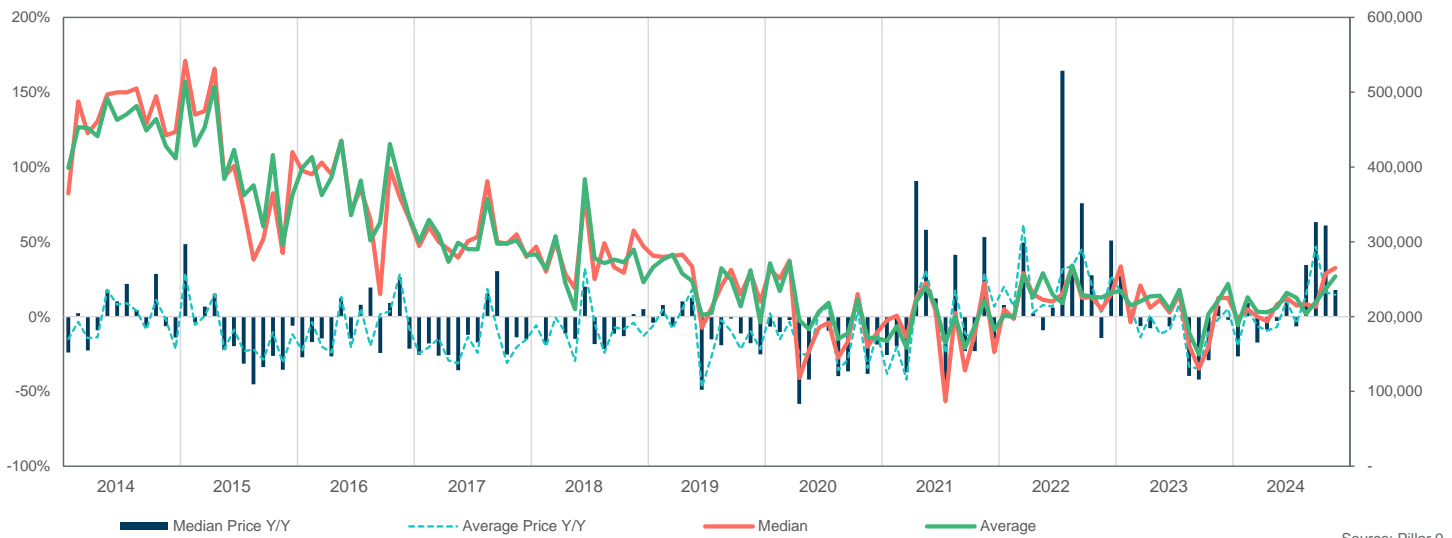
INVENTORY



INVENTORY



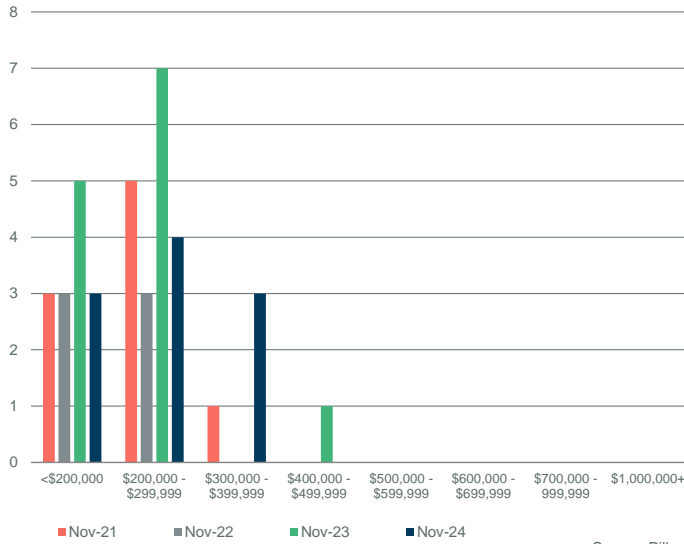
PRICE COMPARISON



FORT MCMURRAY

SALES BY PRICE RANGE

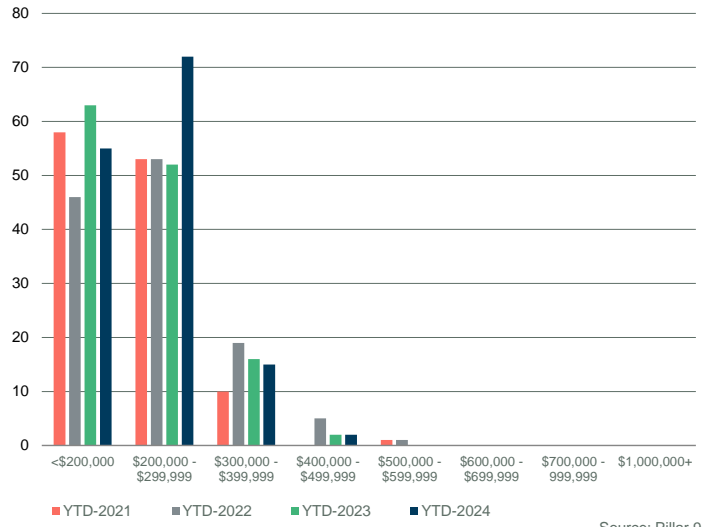
November



Source: Pillar 9

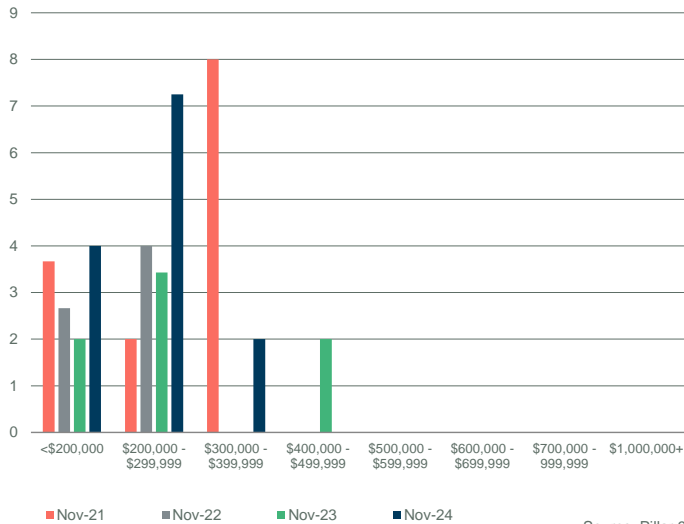
YTD SALES BY PRICE RANGE

YTD-NOV



Source: Pillar 9

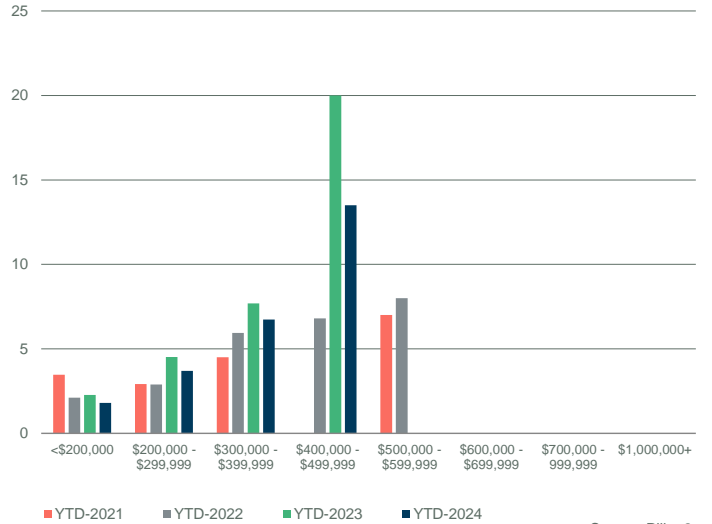
MONTHS OF SUPPLY BY PRICE RANGE



Source: Pillar 9

YTD MONTHS OF SUPPLY BY PRICE RANGE

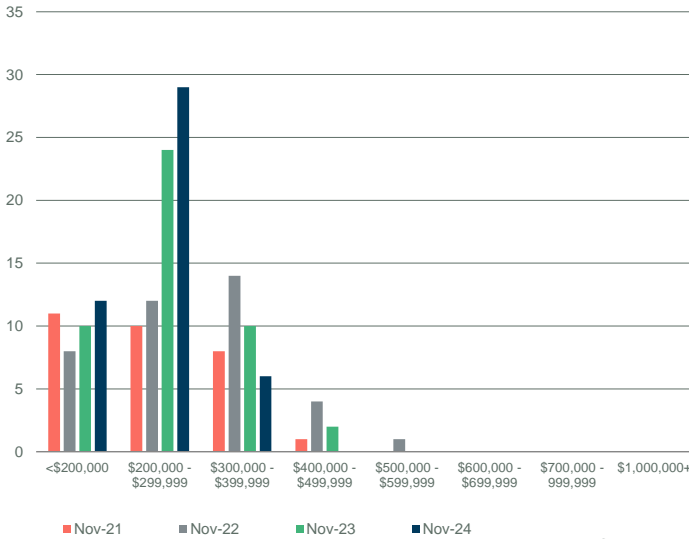
YTD-NOV



Source: Pillar 9

INVENTORY BY PRICE RANGE

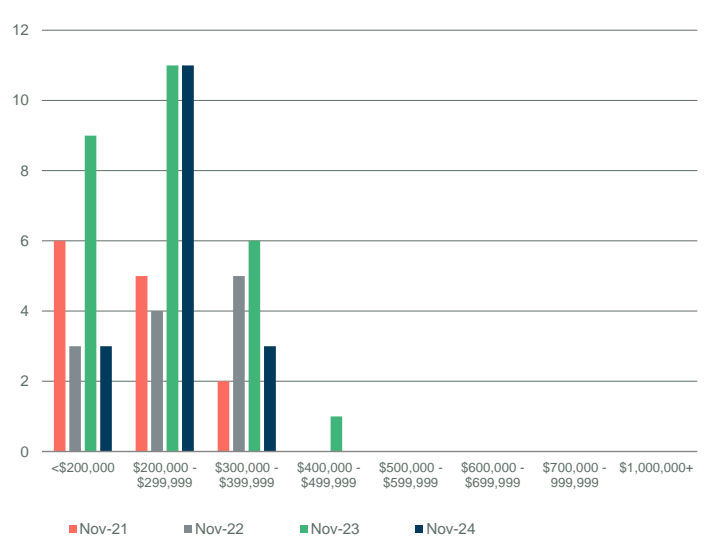
November



Source: Pillar 9

NEW LISTINGS BY PRICE RANGE

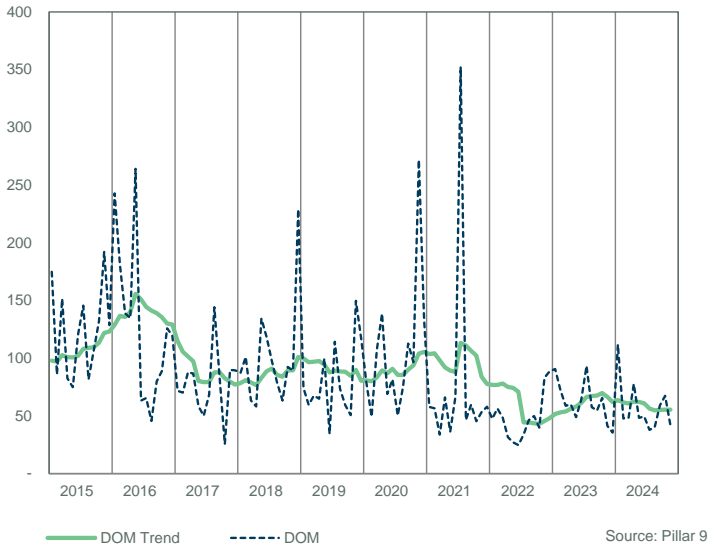
November



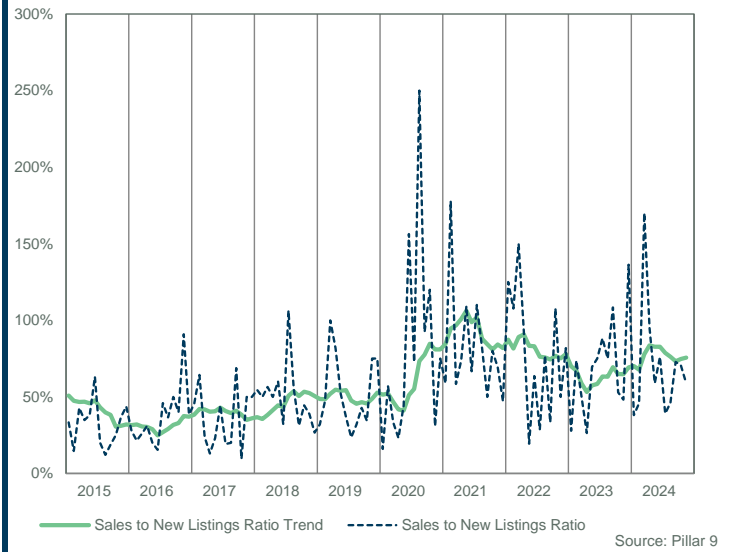
Source: Pillar 9

FORT MCMURRAY

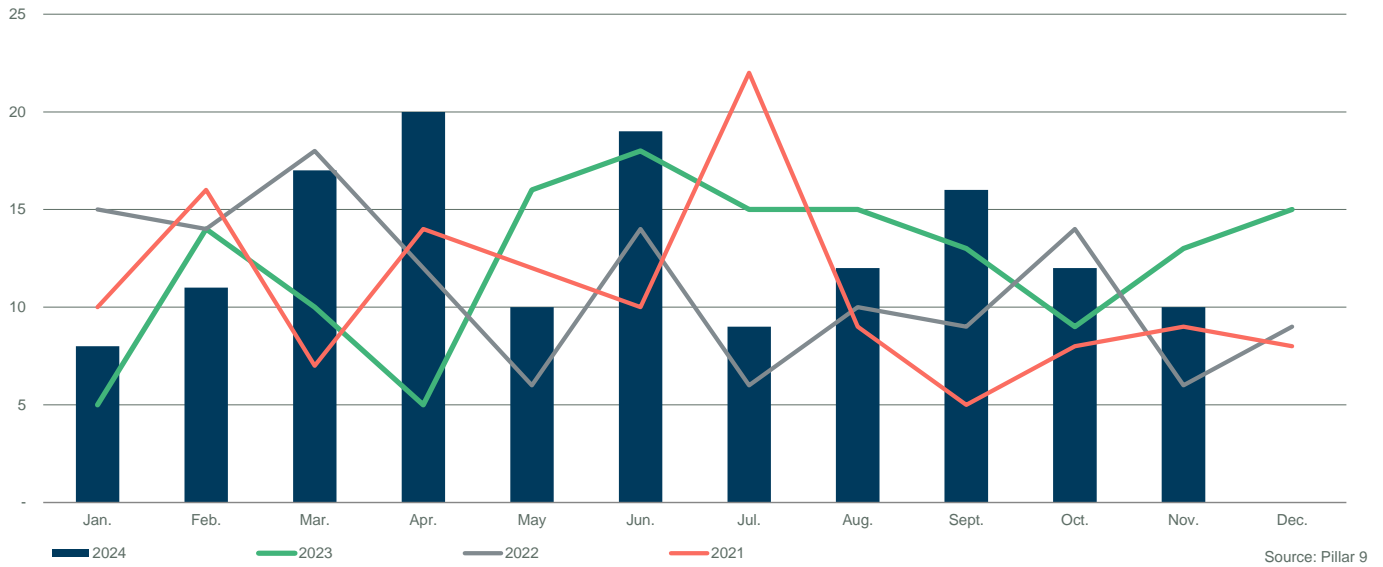
DAYS ON MARKET



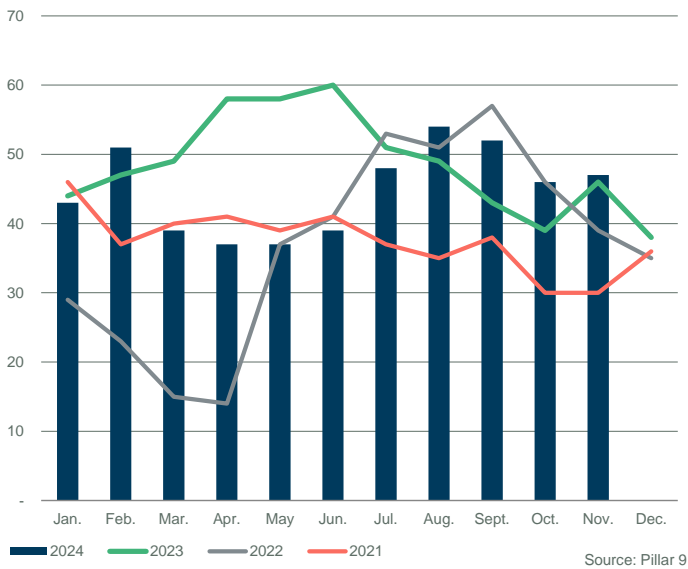
SALES TO NEW LISTINGS RATIO



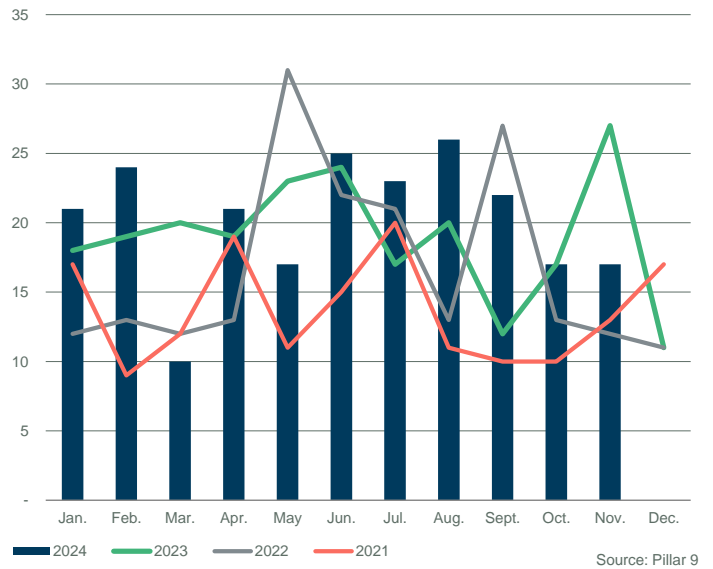
SALES COMPARISON



INVENTORY COMPARISON



NEW LISTINGS COMPARISON



APARTMENT

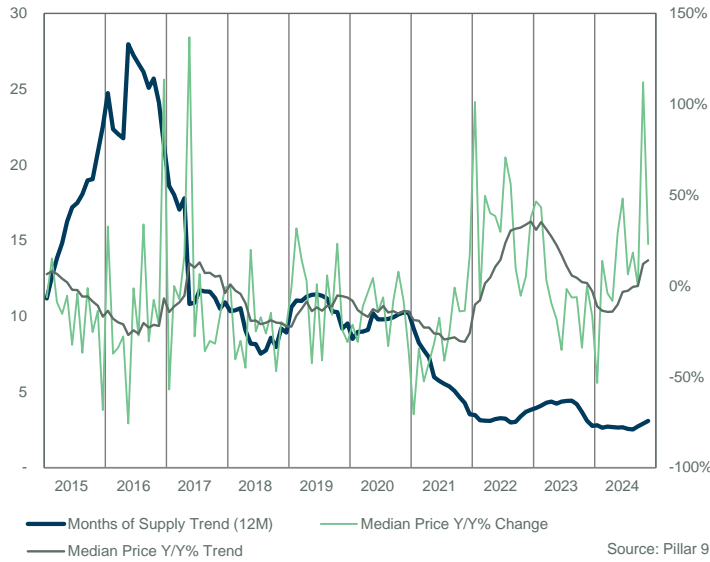


FORT MCMURRAY

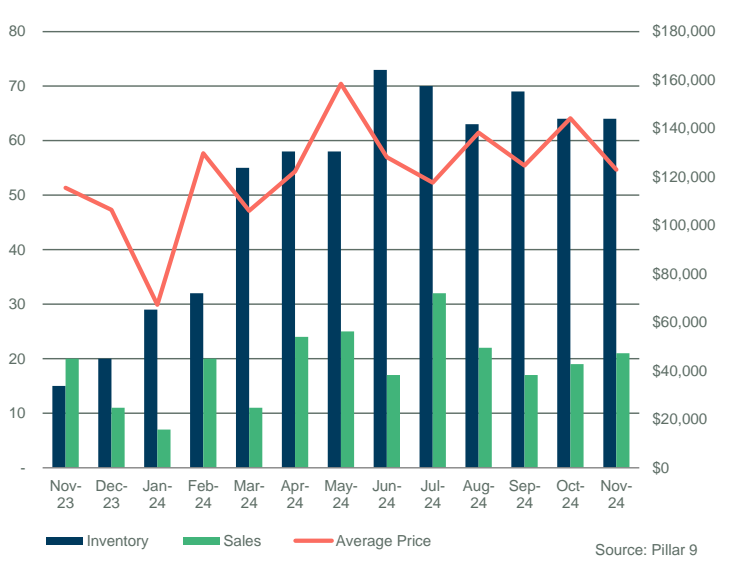
	Sales	Y/Y%	New Listings	Y/Y%	S/NL Ratio	Inventory	Y/Y%	Months of Supply	DOM	SP/LP	Median Price	Y/Y%	Average Price	Y/Y%
Jan-20	6	20%	28	-13%	0.21	86	-35%	14.33	90	92.8%	136,250	-21.2%	141,750	-13.6%
Feb-20	6	-50%	32	52%	0.19	98	-23%	16.33	68	93.7%	129,500	-30.8%	135,917	-28.7%
Mar-20	13	-19%	26	0%	0.50	98	-17%	7.54	155	89.4%	155,000	-11.4%	140,577	-17.7%
Apr-20	-	-100%	20	-49%	-	102	-22%	-	-	-	-	-	-	-
May-20	5	-72%	21	5%	0.24	92	-19%	18.40	85	90.1%	150,000	4.3%	132,000	-12.6%
Jun-20	19	58%	33	10%	0.58	91	-18%	4.79	96	93.0%	120,000	-14.3%	121,079	-15.7%
Jul-20	15	-25%	25	-17%	0.60	85	-26%	5.67	71	92.3%	119,000	-6.3%	114,067	-21.3%
Aug-20	10	-29%	16	-6%	0.63	80	-25%	8.00	77	89.3%	107,875	-33.2%	122,275	-27.4%
Sep-20	10	-33%	20	-20%	0.50	75	-21%	7.50	78	90.8%	112,500	-7.8%	117,300	1.0%
Oct-20	9	-40%	18	-25%	0.50	73	-18%	8.11	100	89.5%	123,000	7.9%	128,833	7.7%
Nov-20	9	-25%	26	13%	0.35	78	-12%	8.67	91	89.1%	110,000	-8.3%	96,667	-29.7%
Dec-20	6	0%	22	22%	0.27	80	0%	13.33	108	88.5%	72,800	-36.0%	89,833	-16.7%
2020	108	-33%	287	-6%	0.38	87	-20%	10.24	94	91.0%	120,000	-14.3%	121,567	-18.5%
Jan-21	27	350%	30	7%	0.90	74	-14%	2.74	95	78.6%	40,000	-70.6%	66,626	-53.0%
Feb-21	12	100%	20	-38%	0.60	71	-28%	5.92	37	83.1%	85,000	-34.4%	109,125	-19.7%
Mar-21	28	115%	22	-15%	1.27	60	-39%	2.14	135	90.1%	73,500	-52.6%	83,707	-40.5%
Apr-21	26	-	26	30%	1.00	52	-49%	2.00	54	92.0%	95,000	-	115,900	-
May-21	18	260%	23	10%	0.78	53	-42%	2.94	70	93.9%	102,500	-31.7%	125,439	-5.0%
Jun-21	24	26%	19	-42%	1.26	42	-54%	1.75	46	92.4%	99,000	-17.5%	114,637	-5.3%
Jul-21	15	0%	28	12%	0.54	49	-42%	3.27	26	93.6%	70,000	-41.2%	80,340	-29.6%
Aug-21	9	-10%	23	44%	0.39	55	-31%	6.11	49	92.0%	80,000	-25.8%	101,900	-16.7%
Sep-21	16	60%	25	25%	0.64	61	-19%	3.81	35	93.2%	111,500	-0.9%	119,344	1.7%
Oct-21	16	78%	15	-17%	1.07	53	-27%	3.31	34	94.4%	105,750	-14.0%	126,813	-1.6%
Nov-21	13	44%	19	-27%	0.68	50	-36%	3.85	52	93.7%	95,000	-13.6%	105,615	9.3%
Dec-21	12	100%	22	0%	0.55	52	-35%	4.33	88	93.8%	85,250	17.1%	115,438	28.5%
2021	216	100%	272	-5%	0.79	56	-35%	3.51	66	90.3%	89,950	-25.0%	103,212	-15.1%
Jan-22	19	-30%	18	-40%	1.06	45	-39%	2.37	36	92.8%	80,500	101.3%	100,337	50.6%
Feb-22	28	133%	33	65%	0.85	48	-32%	1.71	48	92.4%	78,200	-8.0%	89,993	-17.5%
Mar-22	25	-11%	23	5%	1.09	42	-30%	1.68	40	92.8%	110,000	49.7%	125,180	49.5%
Apr-22	27	4%	38	46%	0.71	51	-2%	1.89	53	96.0%	133,000	40.0%	128,411	10.8%
May-22	16	-11%	37	61%	0.43	70	32%	4.38	53	94.7%	142,000	38.5%	156,861	25.0%
Jun-22	23	-4%	19	0%	1.21	56	33%	2.43	32	97.5%	128,500	29.8%	134,943	17.7%
Jul-22	18	20%	18	-36%	1.00	52	6%	2.89	36	94.1%	119,500	70.7%	114,897	43.0%
Aug-22	17	89%	26	13%	0.65	53	-4%	3.12	46	94.5%	125,000	56.3%	120,069	17.8%
Sep-22	14	-13%	28	12%	0.50	61	0%	4.36	31	94.5%	122,500	9.9%	108,250	-9.3%
Oct-22	9	-44%	23	53%	0.39	68	28%	7.56	42	94.1%	100,000	-5.4%	112,678	-11.1%
Nov-22	9	-31%	20	5%	0.45	68	36%	7.56	64	90.0%	100,000	5.3%	103,333	-2.2%
Dec-22	11	-8%	18	-18%	0.61	66	27%	6.00	48	95.4%	117,500	37.8%	123,552	7.0%
2022	216	0%	301	11%	0.72	57	5%	3.83	44	94.2%	115,000	27.8%	118,353	14.7%
Jan-23	14	-26%	11	-39%	1.27	52	16%	3.71	67	95.0%	117,950	46.5%	127,221	26.8%
Feb-23	15	-46%	23	-30%	0.65	52	8%	3.47	74	90.8%	112,000	43.2%	110,393	22.7%
Mar-23	15	-40%	37	61%	0.41	62	48%	4.13	37	93.1%	113,499	3.2%	118,767	-5.1%
Apr-23	22	-19%	22	-42%	1.00	60	18%	2.73	36	90.9%	120,500	-9.4%	111,523	-13.2%
May-23	22	38%	27	-27%	0.81	61	-13%	2.77	61	93.4%	116,000	-18.3%	111,842	-28.7%
Jun-23	16	-30%	26	37%	0.62	65	16%	4.06	74	93.0%	83,250	-35.2%	101,119	-25.1%
Jul-23	18	0%	22	22%	0.82	62	19%	3.44	52	93.6%	117,500	-1.7%	133,700	16.4%
Aug-23	17	0%	17	-35%	1.00	57	8%	3.35	52	94.0%	117,000	-6.4%	123,224	2.6%
Sep-23	25	79%	16	-43%	1.56	40	-34%	1.60	78	93.2%	115,000	-6.1%	112,960	4.4%
Oct-23	23	156%	21	-9%	1.10	29	-57%	1.26	56	92.1%	66,000	-34.0%	94,452	-16.2%
Nov-23	20	122%	15	-25%	1.33	15	-78%	0.75	42	92.9%	100,000	0.0%	115,530	11.8%
Dec-23	11	0%	16	-11%	0.69	20	-70%	1.82	35	92.2%	98,000	-16.6%	106,482	-13.8%
2023	218	1%	253	-16%	0.86	48	-10%	2.76	56	92.8%	112,500	-2.2%	113,441	-4.2%
Jan-24	7	-50%	17	55%	0.41	29	-44%	4.14	53	93.0%	55,000	-53.4%	67,286	-47.1%
Feb-24	20	33%	25	9%	0.80	32	-38%	1.60	28	95.2%	127,500	13.8%	129,770	17.6%
Mar-24	11	-27%	37	0%	0.30	55	-11%	5.00	32	95.0%	109,000	-4.0%	106,045	-10.7%
Apr-24	24	9%	27	23%	0.89	58	-3%	2.42	42	96.6%	110,500	-8.3%	122,287	9.7%
May-24	25	14%	27	0%	0.93	58	-5%	2.32	49	94.8%	150,000	29.3%	158,466	41.7%
Jun-24	17	6%	39	50%	0.44	73	12%	4.29	37	96.0%	123,333	48.1%	128,214	26.8%
Jul-24	32	78%	35	59%	0.91	70	13%	2.19	44	94.3%	124,950	6.3%	117,702	-12.0%
Aug-24	22	29%	22	29%	1.00	63	11%	2.86	42	96.2%	138,500	18.4%	138,373	12.3%
Sep-24	17	-32%	31	94%	0.55	69	73%	4.06	49	95.3%	114,900	-0.1%	124,718	10.4%
Oct-24	19	-17%	28	33%	0.68	64	121%	3.37	51	95.4%	140,000	112.1%	144,224	52.7%
Nov-24	21	5%	30	100%	0.70	64	327%	3.05	40	94.3%	123,000	23.0%	123,029	6.5%
Dec-24														
2024	215	4%	318	34%	0.68	58	41%	3.21	42	95.2%	125,000	11.1%	127,985	12.6%

FORT MCMURRAY

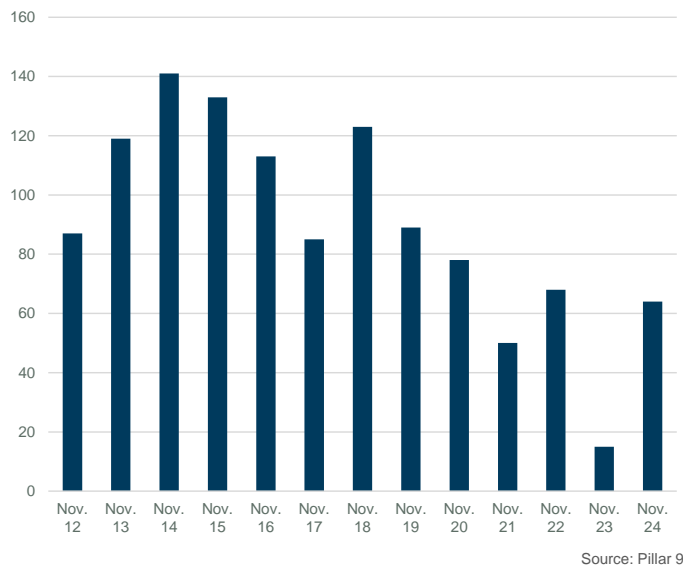
MONTHS OF SUPPLY AND PRICE CHANGE



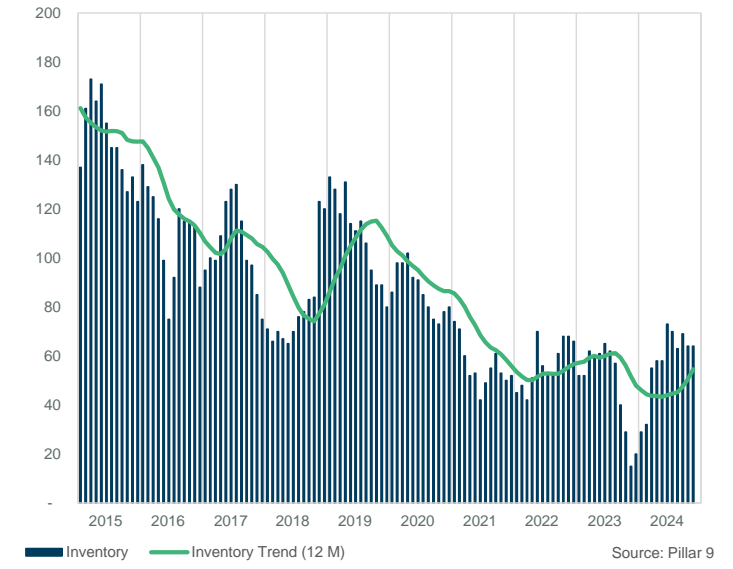
INVENTORY, SALES, AND PRICE



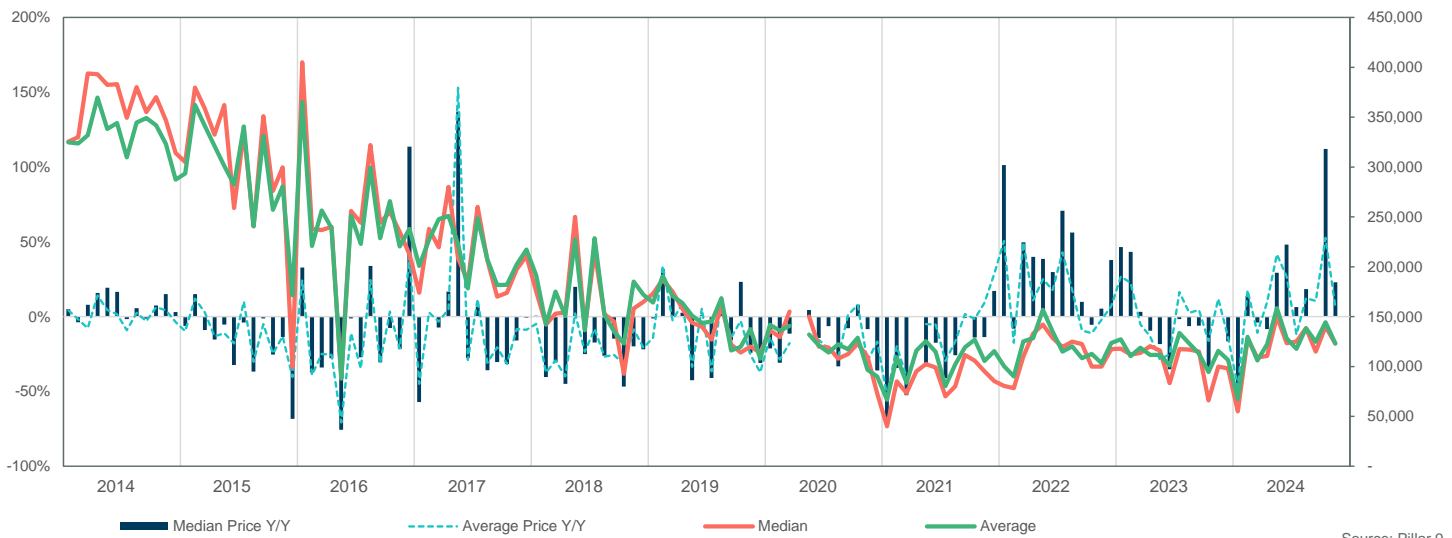
INVENTORY



INVENTORY



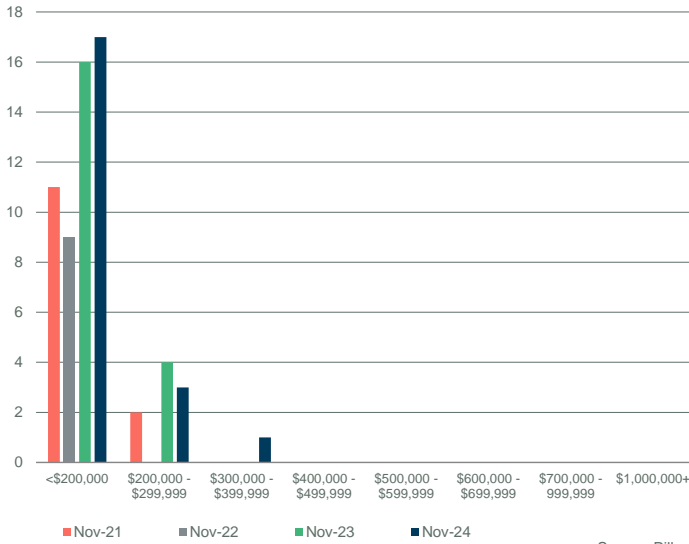
PRICE COMPARISON



FORT MCMURRAY

SALES BY PRICE RANGE

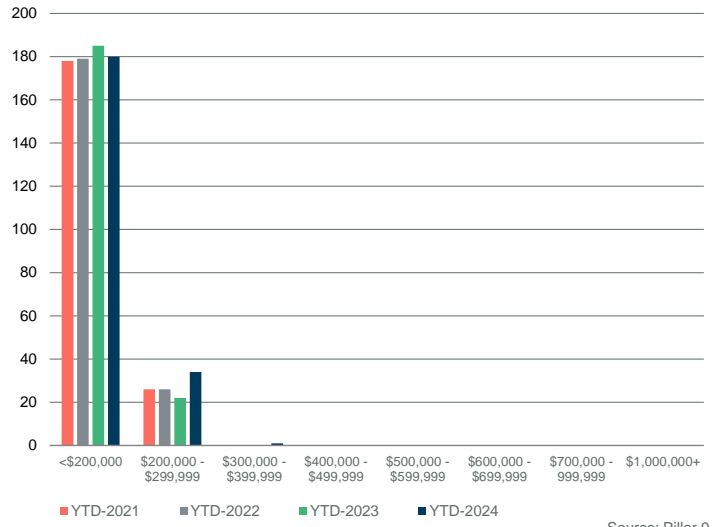
November



Source: Pillar 9

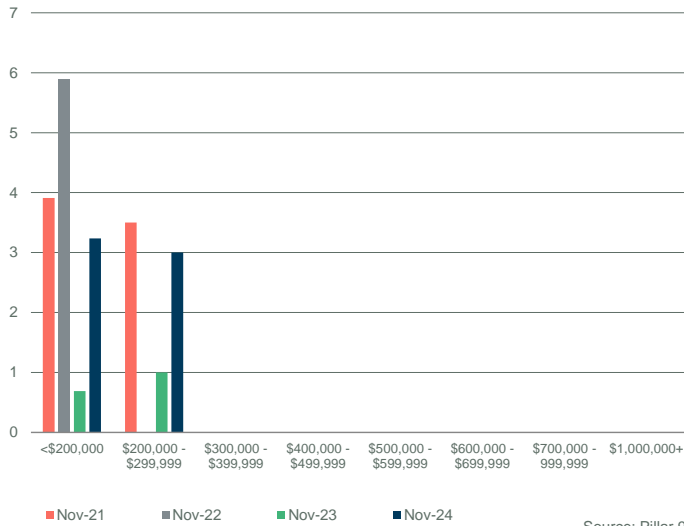
YTD SALES BY PRICE RANGE

YTD-NOV



Source: Pillar 9

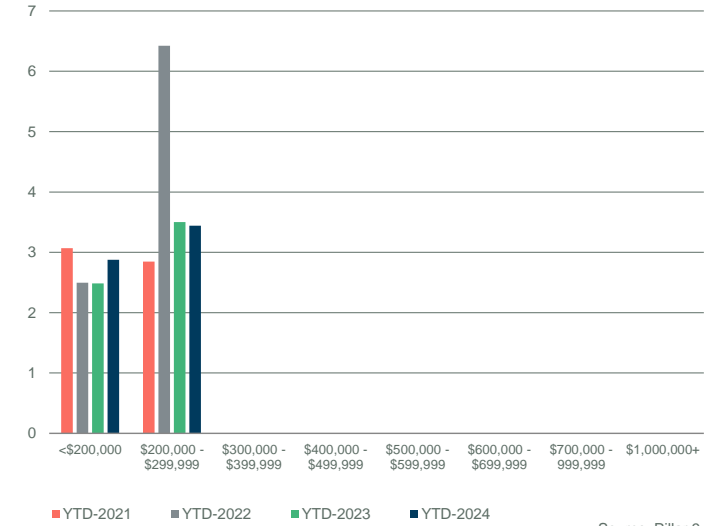
MONTHS OF SUPPLY BY PRICE RANGE



Source: Pillar 9

YTD MONTHS OF SUPPLY BY PRICE RANGE

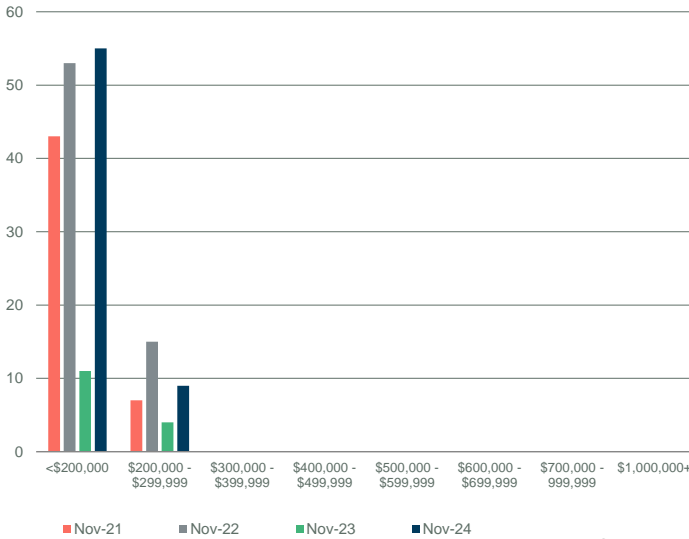
YTD-NOV



Source: Pillar 9

INVENTORY BY PRICE RANGE

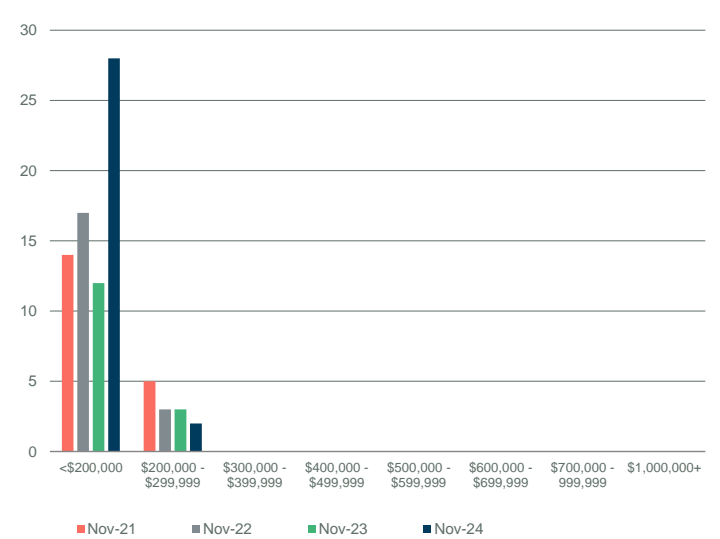
November



Source: Pillar 9

NEW LISTINGS BY PRICE RANGE

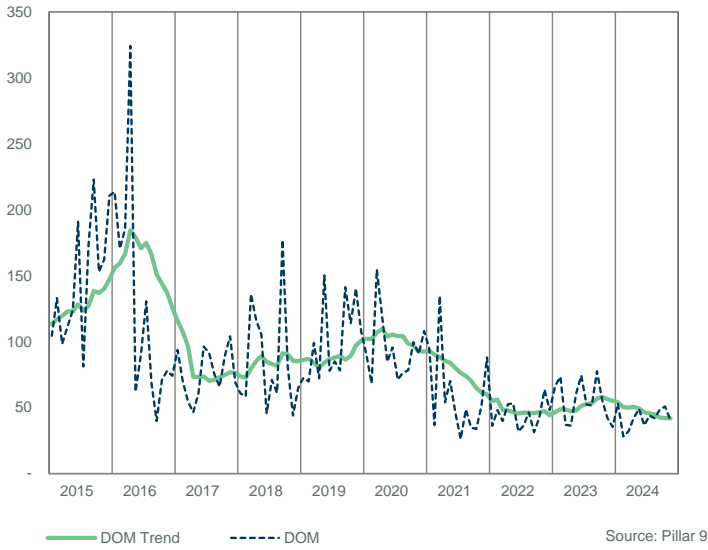
November



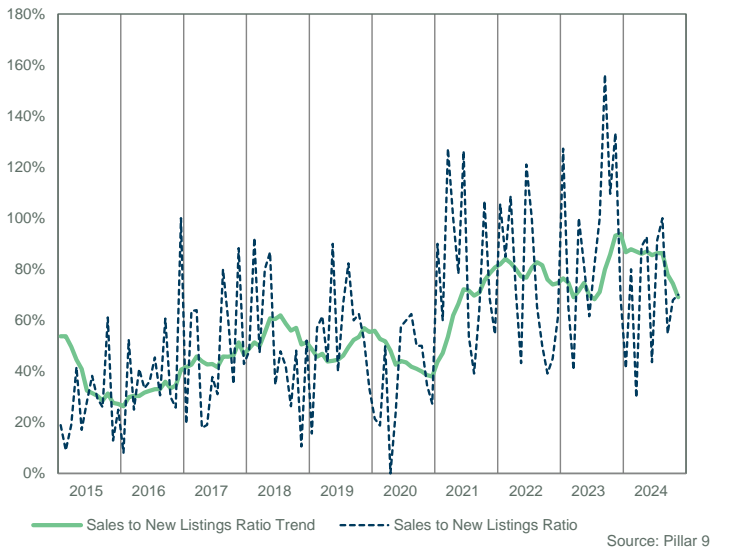
Source: Pillar 9

FORT MCMURRAY

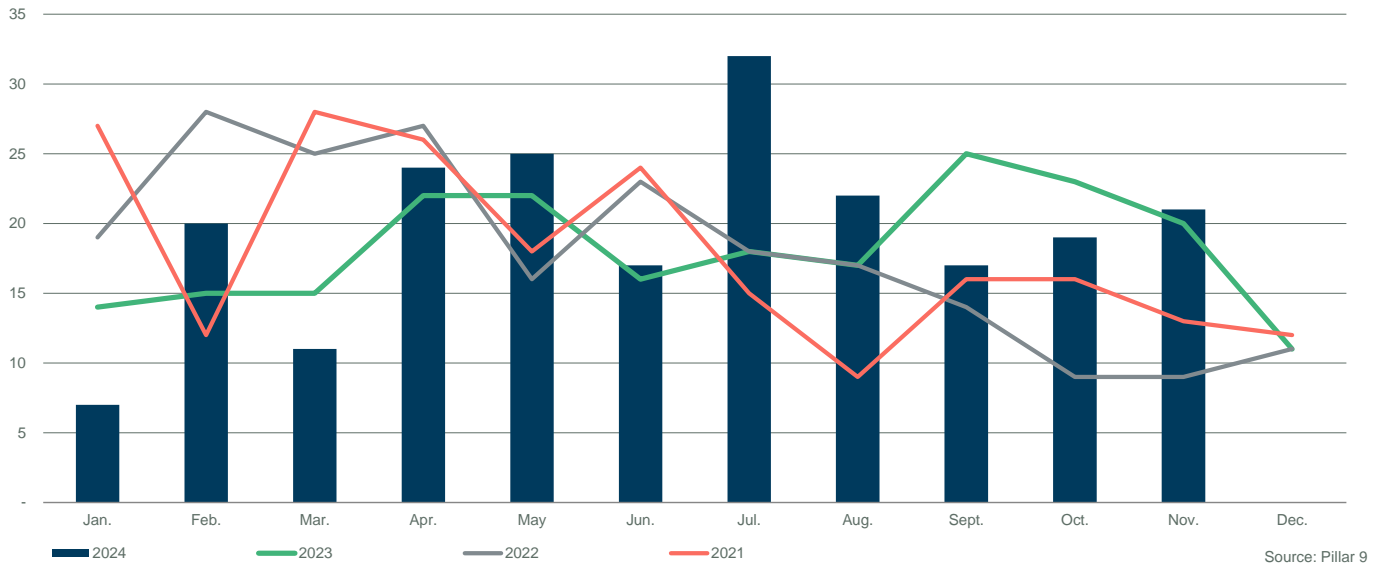
DAYS ON MARKET



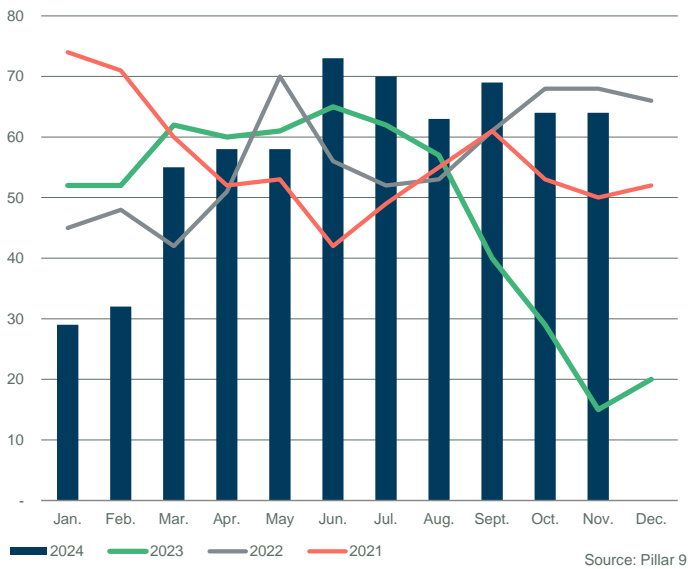
SALES TO NEW LISTINGS RATIO



SALES COMPARISON



INVENTORY COMPARISON



NEW LISTINGS COMPARISON

