

MATING DRAWING

RECOMMENDED PCB LAYOUT
GENERAL TOLERANCE ± 0.05

NOTES:

- MATERIAL:
 - HOUSING: THERMOPLASTIC, HIGH TEMP, UL94V-0; COLOR: BLACK;LCP
 - CONTACT: COPPER ALLOY(BRASS)
 - SHELL: COPPER ALLOY(NICKEL SLIVER)
- FINISH:

CONTACT:

 - 50~100u" NICKEL UNDERPLATING OVERALL.
 - CONTACT POINT: GOLD 3u" MIN
 - SOLDER TAIL: GOLD 1u" MIN
 - U:CONTACT POINT: GOLD 5u" MIN
 - SOLDER TAIL: GOLD 1u" MIN
 - T:CONTACT POINT: GOLD 10u" MIN
 - SOLDER TAIL: GOLD 1u" MIN
- REFLOW SOLDER CAPABLE TO 260°C PER ACES SPEC.
- SPEC. PLS. REFER TO SPEC-50458-XXXX-XXX
- PACKAGE PLS. REFER TO 50458-XXXX-XX-TRP&50458-XXXX-U-TRP
- PART NUMBER

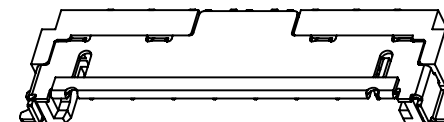
50458-XXX X X-XXX

NO OF CKT
PACKING
0: TAPE & REEL
1: Tube

TYPE	PACKING	SHELL
001	50458-XXXXCR	SMT TYPE, PLS SEE PAGE 1
003	50458-XXXXCR-U	SMT TYPE, PLS SEE PAGE 1
001	50458-XXXXCR-01	SMT TYPE, PLS SEE PAGE 1

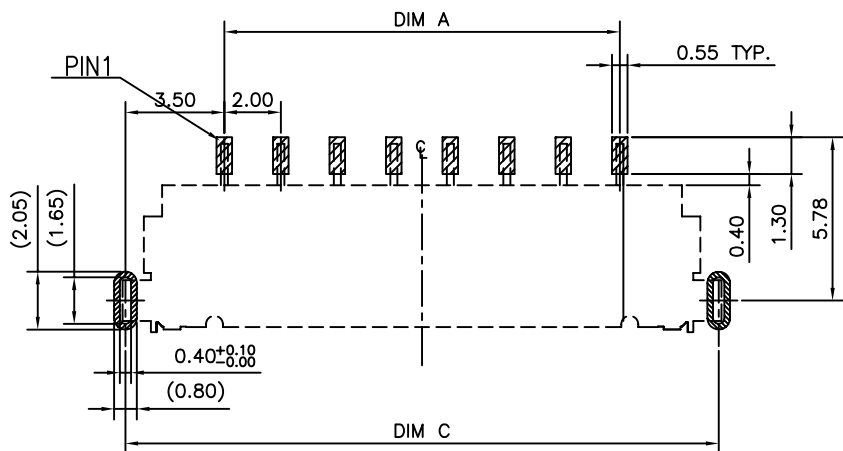
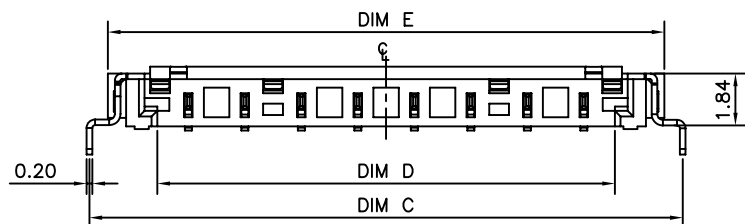
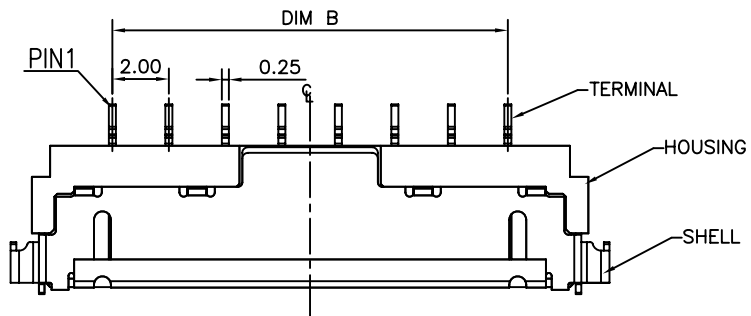
PLATING

- GOLD FLASH
- CONTACT POINT: GOLD 5u" MIN
- SOLDER TAIL: GOLD 1u" MIN
- CONTACT POINT: GOLD 10u" MIN
- SOLDER TAIL: GOLD 1u" MIN



CKTS	DIMA	DIMB	DIMC	DIMD	DIME
006	10	10.00	17.2	12.2	15.7
007	12	12.00	19.2	14.2	17.7
008	14	14.00	21.2	16.2	19.7
009	16	16.00	23.2	18.2	21.7
010	18	18.00	25.2	20.2	23.7

QUALITY SYMBOLS	DRAWN BY	DATE				
MAJOR	ZHANG HAO	18/03/16				
CRITICAL	CHECKED BY	DATE	2.0MM WTB WAFER CONN.SMT R/A TYPE			
GENERAL TOLERANCES (UNLESS SPECIFIED)	BRAVE	18/03/16				
X. ± 0.5 .X ± 0.25 .XX ± 0.15 .XXX ± 0.1 ANGLES $\pm 2^\circ$	APPROVED BY	DATE	UNITS	SIZE	DWG NO.	
	BRAVE	18/03/16	mm	A4	50458-XXXX-XXX	
	SCALE	REV	1:1		G	PART NO.
	SHEET NO.	1 OF 2	SEE NOTES			



RECOMMENDED PCB LAYOUT
GENERAL TOLERANCE ±0.05

NOTES:

1. MATERIAL:
 - 1.1 HOUSING: LCP THERMOPLASTIC, HIGH TEMP., UL94V-0; COLOR: BLACK;
 - 1.2 CONTACT: COPPER ALLOY(BRASS)
 - 1.3 SHELL: COPPER ALLOY(NICKEL SILVER)
2. FINISH:
 - CONTACT:
 - 50~100u" NICKEL UNDERPLATING OVERALL.
 - 1:CONTACT POINT: GOLD 3u"MIN
 - SOLDER TAIL: GOLD 1u" MIN
 - U:CONTACT POINT: GOLD 5u"MIN
 - SOLDER TAIL: GOLD 1u" MIN
 - T:CONTACT POINT: GOLD 10u"MIN
 - SOLDER TAIL: GOLD 1u" MIN
3. REFLOW SOLDER CAPABLE TO 260°C PER ACES SPEC.
4. SPEC. PLS. REFER TO SPEC-50458-XXXX-XXX
5. PACKAGE PLS. REFER TO 50458-XXXX-05-TRP
6. PART NUMBER

50458-XXX X X-XXX

NO OF CKT

PACKING

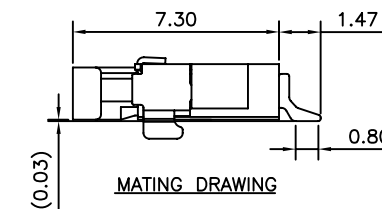
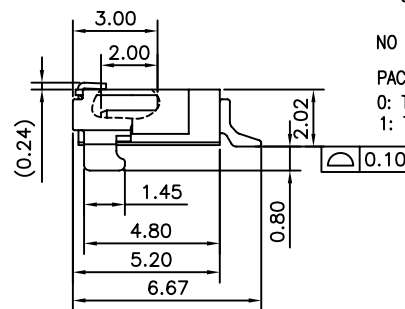
0: TAPE & REEL

1: Tube

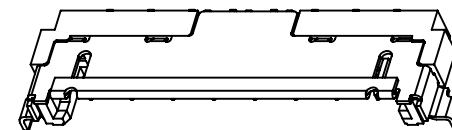
TYPE	PACKING	SHELL
002	50458-XXXXX-05-TRP	DIP TYPE, PLS SEE PAGE 2

PLATING

- 1: GOLD FLASH
- U: CONTACT POINT: GOLD 5u"MIN
- SOLDER TAIL: GOLD 1u" MIN
- T: CONTACT POINT: GOLD 10u"MIN
- SOLDER TAIL: GOLD 1u" MIN



MATING DRAWING



CKTS	DIMA	DIMB	DIMC	DIMD	DIME
006	10	10.00	17.0	12.2	15.7
007	12	12.00	19.0	14.2	17.7
008	14	14.00	21.0	16.2	19.7
009	16	16.00	23.0	18.2	21.7

QUALITY SYMBOLS MAJOR Ⓜ CRITICAL Ⓢ GENERAL TOLERANCES (UNLESS SPECIFIED) X. ±0.5 .X ±0.25 .XX ±0.15 .XXX ±0.1 ANGLES ±2°	DRAWN BY ZHANG HAO	DATE 18/03/16	
	CHECKED BY BRAVE	DATE 18/03/16	
	APPROVED BY BRAVE	DATE 18/03/16	UNITS mm
	SCALE 1:1	SHEET NO. 2 OF 2	SIZE A4
			DWG NO. 50458-XXXXX-XXX
			PART NO. SEE NOTES