



KELLENBERG MEMORIAL HIGH SCHOOL

SCHOOL OVERVIEW

- Private, independent, Catholic school
- Located near the middle of Nassau County, Long Island on a 21-acre campus
- Exclusively college preparatory curriculum
- Admission based on the Test for Admission into Catholic High School (TACHS).
- Financial constraints do not permit any special academic programs or modifications of the required curriculum.
- Updated STEM Labs, New Computer Classrooms
- Brand new Firebird Center for Arts and Athletics

ADMINISTRATION

Bro. Kenneth Hoagland, S.M.

Principal

principalsoffice@kellenberg.org

Mrs. Angela Cameron

Assistant Principal for Academics

mrscameron@kellenberg.org

Mr. James O'Brien

Assistant Principal for Admissions

mrobrien@kellenberg.org

GUIDANCE STAFF

Mr. Christopher Lyons

Assistant Principal of Guidance

mrlyons@kellenberg.org

Fr. Albert Bertoni, S.M.

Director of Guidance, Emeritus

fralbert@kellenberg.org

Mrs. Juliana Munns

Assistant Director of Guidance

mrsmunns@kellenberg.org

COLLEGE PLACEMENT STAFF

Miss Erin Ronan

College Placement Coordinator

missronan@kellenberg.org

Miss Paige Tatum

College Admissions Liaison

missatum@kellenberg.org

Mr. Kevin Dugal

College Placement Office Liaison

mrdugal@kellenberg.org

2025-2026 COLLEGE PROFILE

OUR MISSION

Kellenberg Memorial, which is owned and operated by the Brothers and priests of the Marianist Community, supports students as they journey in their Catholic faith, helping them develop both the insight and the resources to build the community around them. The school's administration and faculty instill a love of learning while challenging the students academically, cultivating critical thinking skills, analytical skills, and intellectual curiosity using a time tested liberal arts curriculum. Kellenberg Memorial is deeply committed to serving the needs of others. This commitment to service is symbolic of our Blessed Mother, Mary, whose service to the Church opens up our relationship to Jesus Christ.

150

FACULTY
MEMBERS

6-12

GRADE
LEVELS

2088

TOTAL
ENROLLMENT

15,500+

ALUMNI
GLOBALLY

500

SENIORS IN THE
CLASS OF 2025

100%

GRADUATION RATE
OF THE
CLASS OF 2025

3,659

NUMBER OF
SCHOLARSHIP
AWARDED

\$50
MILLION+

AMOUNT IN
SCHOLARSHIPS
AWARDED

TUITION FOR 2025-2026
SCHOOL YEAR

\$14,600 (HIGH SCHOOL)

THERE ARE NO ADDITIONAL FEES.

ACCREDITATION

Board of Regents of the State of New York
and the Middle States Association of
Colleges and Schools.

KELLENBERG GRADUATES

Our alumni demonstrate the foundational elements of an education imbued with the Marianist charism alongside the grammar, logic, rhetoric trivium as evidenced by their academics, affective behavior, leadership and service, and spirituality.

1400 GLENN CURTISS BLVD. UNIONDALE, NY 11553
516-292-0200 • WWW.KELLENBERG.ORG

DISTINCTIVE FEATURES OF THE KELLENBERG CURRICULUM

ALL GRADES

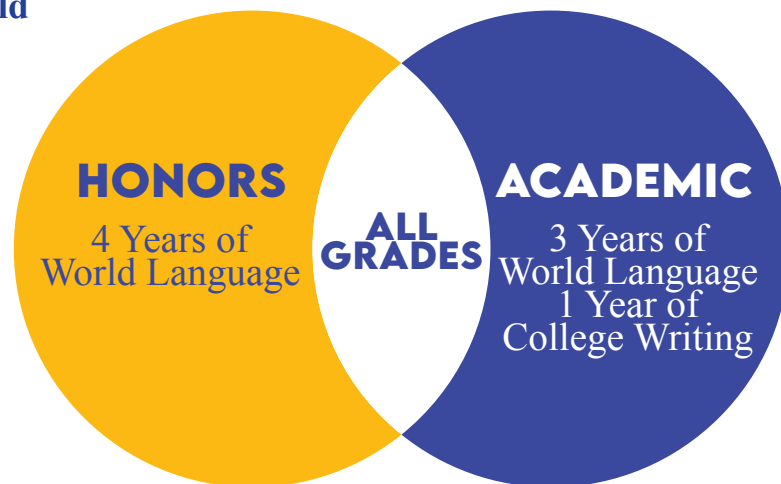
All Kellenberg students take a full academic load of college-preparatory courses every day. **Each Kellenberg student will take four years of English, mathematics, religion, history, and science. Please see graphic for world language requirements.** Students will also take three years of physical education and one year of computer, health, music, and art.

HONORS PROGRAM

The most rigorous college-preparatory program wherein students are required to take all the above-listed courses, in addition to four years of World Language.

ACADEMIC PROGRAM

A very challenging college-preparatory program wherein the students are required to take all the above-listed courses in addition to three years of a World Language and a college writing course.



COLLEGE CREDIT COURSES

Students in all academic programs can elect to take college credits from the following institutions: St. John's University, Adelphi University, Hofstra University, and Molloy University.

UNIQUE ACADEMIC INITIATIVES

ENRICHMENT & ELECTIVE COURSES

Students can take 1/2 credit elective courses in: Computer Science, Advanced Computer Applications, Digital Media, International Studies, Music Theory, Science Research & Inquiry, and Art Portfolio Preparation.

Students can take full credit elective courses in: Calculus I, Calculus II, Foundations of Calculus, Engineering, Pre-Calculus, Statistics & Finance, Environmental Studies, Astronomy, Geology, Health Sciences, Forensics, and Sports Medicine.

BUSINESS COURSES

In partnership with Molloy University, students participate in a hybrid course that provides college credits in an after school setting. A variety of methods, including online learning platforms, allow for individualized pacing and instruction.

SCIENCE SEMINARS

A unique opportunity that cultivates scientific literacy, interdisciplinary study, and open-ended laboratory investigation for high achieving science students. Courses include: Biology, Chemistry, and Physics.

EMT PROGRAM

In collaboration with the Nassau County Emergency Medical Services Academy, this program offers students an opportunity to become a New York State Certified Emergency Medical Technician.

LABORATORY ASSISTANT PROGRAM

Offered to select, high achieving senior students who are interested in a career in science, this role develops leadership skills by full immersion in the Lab experience across grade levels.

STEM

Robust after school programs foster individual pathways that complement classroom instruction. Clubs include but are not limited to: Robotics, Amateur Radio, Computer Club, Health Sciences Club, Vet Tech Club, Lab Squad, Psychology Club, Science Club, Business and Finance Club, and an award-winning, nationally competitive Science Olympiad program.

WISE FINANCIAL LITERACY CERTIFICATION

This program covers a wide variety of topics from the world of finance. The course addresses basics such as reconciling accounts and reading a paycheck, as well as more advanced topics such as understanding long and short-term investments, exploring types and uses of insurance, learning the different options for purchasing a home, and more. Upon completion of the course, students will take a final exam. All students scoring a passing grade on the exam become Certified Financially Literate™.



80+

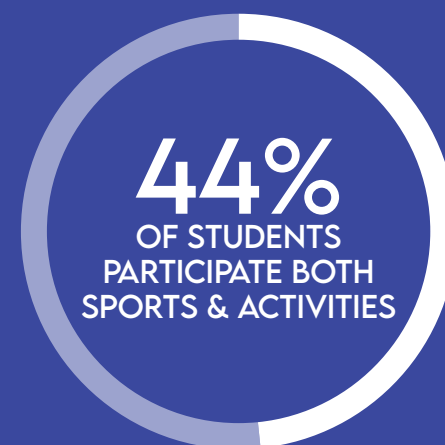
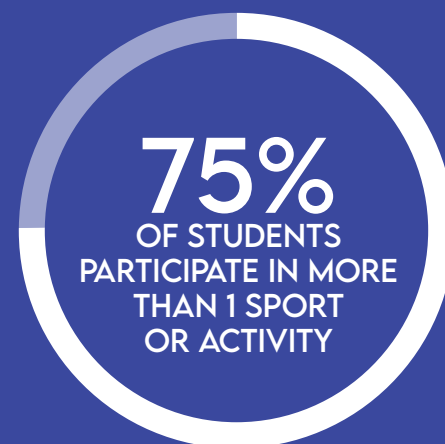
CLUBS & ACTIVITIES

Participation in extracurricular clubs and activities is an essential part of the Kellenberg Memorial experience. Students have the opportunity to become involved in one or more of the over 80 different co-curricular or extracurricular activities.

29

VARSITY TEAMS

Kellenberg Memorial sponsors 60 official interscholastic athletic teams, 29 of which are varsity level. The Marianist Philosophy as it pertains to athletics is "Educate the whole student - Heart, Mind, and Body." Kellenberg athletic teams participate in arguably the most competitive athletic leagues in the country. Kellenberg Memorial hosts recently renovated, state of the art athletic facilities for these teams as well.



COLLEGES THE CLASS OF 2025 WERE ACCEPTED TO



Abilene Christian University	Elmira College	Massachusetts College of Pharmacy and Health Sciences	St. Francis College	University of Indianapolis
Adelphi University	Elon University	McGill University	St. John Fisher University	University of Iowa
Albany College of Pharmacy and Health Sciences	Embry-Riddle Aeronautical University-Daytona Beach	Mercy University	St. John's University-New York	University of Kansas
Albright College	Emerson College	Mercyhurst University	St. Joseph's University - New York	University of Kentucky
Alfred State College	Emmanuel College	Merrimack College	St. Joseph's University, New York - Long Island Campus	University of Lynchburg
Alfred University	Emory & Henry College	Metropolitan State University of Denver	St. Lawrence University	University of Maine
Alvernia University	Emory University	Miami University-Oxford	St. Thomas Aquinas College	University of Maryland Eastern Shore
American International College	Emory University-Oxford College	Michigan State University	State University of New York at New Paltz	University of Maryland - Baltimore County
American Musical and Dramatic Academy	Endicott College	Misericordia University	Stetson University	University of Maryland - College Park
American University	Fairfield University	Molloy University	Stevens Institute of Technology	University of Massachusetts - Amherst
American University of Beirut	Fairleigh Dickinson University-Metropolitan Campus	Monmouth University	Stonehill College	University of Massachusetts-Boston
Anna Maria College	Farmingdale State College	Morehouse College	Stony Brook University	University of Massachusetts - Dartmouth
Appalachian State University	Fisher College	Morgan State University	Suffolk County Community College-Western Campus	University of Massachusetts-Lowell
Arcadia University	Flagler College	Mount Saint Mary College	Suffolk University	University of Miami
Arizona State University-Tempe	Florida Agricultural and Mechanical University	Mount St. Mary's University	SUNY at Purchase College	University of Michigan-Ann Arbor
Assumption University	Florida Atlantic University	Muhlenberg College	SUNY Brockport	University of Minnesota - Twin Cities
Auburn University	Florida Gulf Coast University	Nassau Community College	SUNY Buffalo State	University of Mississippi
Ave Maria University	Florida Institute of Technology	New England Institute of Technology	SUNY College at Geneseo	University of Mount Saint Vincent
Bard College	Florida International University	New Jersey Institute of Technology	SUNY College at Oswego	University of New Hampshire - Main Campus
Barry University	Florida Southern College	New York Institute of Technology	SUNY College at Plattsburgh	University of New Haven
Baylor University	Florida State University	New York University	SUNY College at Potsdam	University of North Carolina at Charlotte
Belmont Abbey College	Fordham University	Niagara University	SUNY College of Agriculture and Technology at Cobleskill	University of North Carolina at Greensboro
Bennington College	Framingham State University	Nichols College	SUNY College of Environmental Science and Forestry	University of North Carolina - Wilmington
Bentley University	Franciscan University of Steubenville	Norfolk State University	SUNY College of Technology at Canton	University of North Florida
Bethune-Cookman University	Franklin and Marshall College	North Carolina Central University	SUNY College of Technology at Delhi	University of Notre Dame
Binghamton University	Full Sail University	North Carolina State University at Raleigh	SUNY Cortland	University of Oklahoma - Norman Campus
Boston College	Gannon University	Northeastern University	SUNY Fredonia	University of Oregon
Boston University	Gardner-Webb University	Norwich University	SUNY Maritime College	University of Pennsylvania
Bowie State University	Geneva College	Notre Dame of Maryland University	SUNY Morrisville	University of Pittsburgh - Pittsburgh Campus
Brandeis University	George Mason University	Nova Southeastern University	SUNY Old Westbury	University of Rhode Island
Bridgewater State University	Georgetown University	Occidental College	SUNY Oneonta	University of Richmond
Brown University	Georgia Institute of Technology-Main Campus	Ohio State University - Main Campus	SUNY Polytechnic Institute	University of Rochester
Bryant University	Georgia Southern University	Ohio University-Main Campus	Susquehanna University	University of Saint Joseph
Bucknell University	Georgia State University	Pace University	Syracuse University	University of San Diego
Butler University	Georgian Court University	Pace University, Westchester Campus	Temple University	University of San Francisco
Cal Poly - Pomona	Hampshire College	Palm Beach Atlantic University	Texas A&M University - College Station	University of Scranton
Caldwell University	Hampton University	Pennsylvania College of Technology	Texas Christian University	University of South Carolina - Columbia
California State University-Fullerton	Hawaii Pacific University	Pennsylvania State University - Penn State Main Campus	Texas Tech University	University of Southern California
California State University-Long Beach	High Point University	Pennsylvania Western University	The Catholic University of America	University of St Andrews
California State University-Los Angeles	Hiram College	Pepperdine University	The City University of New York - CUNY	University of the Virgin Islands
California State University-Northridge	Hobart and William Smith	Pitt Community College	The George Washington University	University of Vermont
Canisius University	Hofstra University	Providence College	The New School	University of Virginia - Main Campus
Case Western Reserve University	Holy Cross College	Purdue University-Main Campus	The Sophie Davis School of Biomedical Education	University of Washington - Seattle Campus
Centenary University	Houghton College	Queens College	The University of Alabama	University of Wisconsin-Madison
Chaminade University of Honolulu	Howard University	Queens University of Charlotte	The University of Findlay	Ursinus College
Chaplain College	Illinois Institute of Technology	Quinnipiac University	The University of Tampa	Utica University
Charleston Southern University	Indiana University-Bloomington	Rensselaer Polytechnic Institute	The University of Tennessee-Chattanooga	Vassar College
Chestnut Hill College	Iona University	Rider University	The University of Tennessee-Knoxville	Villanova University
Cheyney University of Pennsylvania	Ithaca College	Robert Morris University	The University of Texas at Austin	Virginia State University
Clarkson University	James Madison University	Rochester Institute of Technology	Thomas Jefferson University	Virginia Tech
Clemson University	John Carroll University	Roger Williams University	Towson University	Wagner College
Coastal Carolina University	Johnson & Wales University-Providence	Rollins College	Trinity College	Wake Forest University
Colgate University	Juniata College	Rowan University	Tulane University of Louisiana	Wake Technical Community College
College of Charleston	Keene State College	Russell Sage College	Union College (NY)	Washington & Jefferson College
College of the Holy Cross	Keiser University - Flagship Campus, FL	Rutgers University-Camden	United States Military Academy	Washington College
Colorado State University-Fort Collins	Kennesaw State University	Rutgers University-New Brunswick	United States Naval Academy	Webb Institute
Commonwealth University	Kent State University at Kent	Sacred Heart University	University at Albany, SUNY	Wentworth Institute of Technology
Bloomsburg, Lock Haven and Mansfield	King's College	Saint Francis University	University at Buffalo	Wesleyan University
Cooper Union for the Advancement of Science and Art	La Salle University	Saint Joseph's University	University of Akron Main Campus	West Virginia University
Coppin State University	Lafayette College	Saint Leo University	University of Alabama in Huntsville	Western Connecticut State University
Cornell University	Lake Erie College	Saint Louis University	University of Alaska Fairbanks	Western New England University
CUNY Bernard M Baruch College	Lehigh University	Saint Mary's College	University of Arizona	Wheaton College - Massachusetts
CUNY Brooklyn College	Liberty University	Salve Regina University	University of Bridgeport	Wilkes University
CUNY City College	Lincoln Memorial University	Santa Clara University	University of California-Irvine	Wingate University
CUNY Hunter College	Lincoln University	Savannah College of Art and Design	University of Central Florida	Winthrop University
CUNY John Jay College of Criminal Justice	Long Island University - Post	Seton Hall University	University of Charleston	Worcester Polytechnic Institute
CUNY Lehman College	Louisiana State University	Seton Hill University	University of Colorado Boulder	Xavier University
CUNY Queens College	Loyola Marymount University	Shaw University	University of Colorado Denver	Yale University
CUNY York College	Loyola University Chicago	Sheffield Hallam University	University of Connecticut	York College of Pennsylvania
Curry College	Loyola University Maryland	Siena College	University of Dayton	
Daemen University	Lycoming College	Skidmore College	University of Delaware	
Delaware State University	Lynn University	Southern Connecticut State University	University of Florida	
DePaul University	Macalester College	Southern Methodist University	University of Georgia	
DeSales University	Manhattan University	Southern New Hampshire University	University of Hartford	
Drew University	Manhattanville University	Springfield College	University of Hawaii at Manoa	
Drexel University	Marist University	St Bonaventure University	University of Illinois at Urbana-Champaign	
Duquesne University	Marquette University	St Olaf College		
East Carolina University	Marymount Manhattan College	St. Andrews University		
Eckerd College	Marywood University			
	Massachusetts College of Liberal Arts			

