













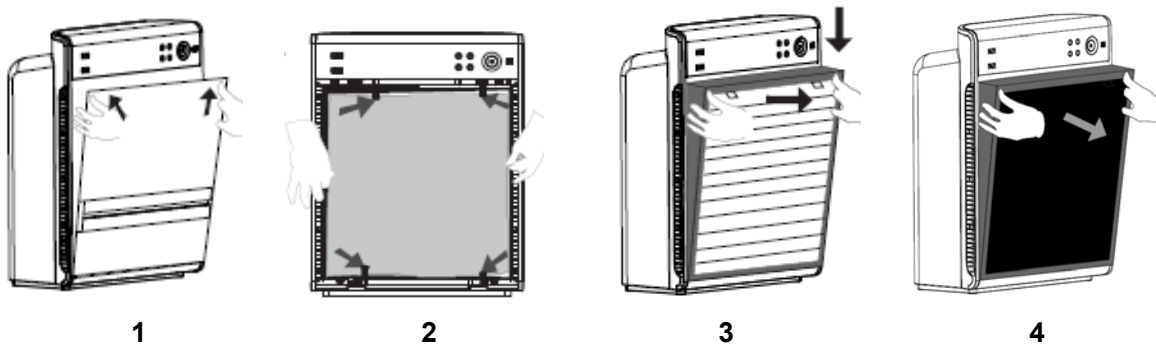




Pre-filter: Turn the 4 locks per the direction of the arrows to release the pre-filter.

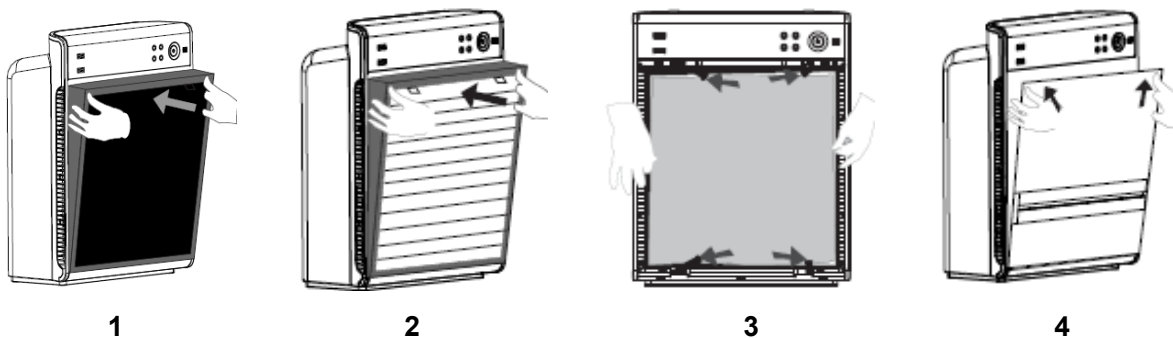
HEPA filter: Hold the small ribbon and pull the filter out.

Carbon filter: Hold the small ribbon and pull the filter out.



#### 4.3.2 Assembly

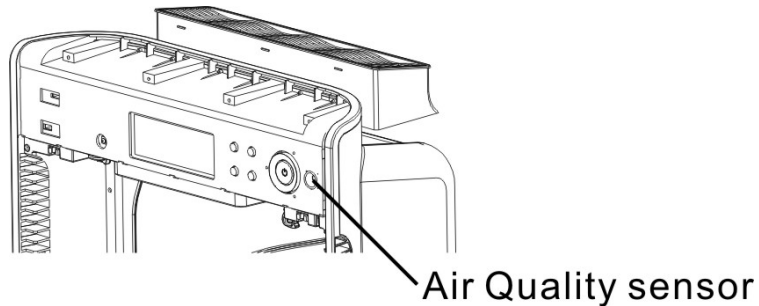
1. Carbon filter: Put the filter in place from the bottom and then push it into the cabinet.
2. HEPA filter: Put the filter in place from the bottom and then push it into the cabinet.
3. Pre-filter: Place in the pre-filter and turn the locks to secure it.
4. Front cover: Secure the interlock at the bottom first and push the whole cover inwards at the top two corners to secure it.





## 5. Troubleshooting

Problems	Cause	Solution
Air Quality indicator constantly shows poor air quality.	Lens inside the sensor is dirty.	Turn off and vacuum the sensor (to the right of the power button). Wait a few seconds and power back on.
Unit will not turn on.	Cover is not fully closed, may be blocked by filters. This occurs sometimes in shipment.	Remove the front cover and all of the filters. Re-install the filters and ensure each is fully installed. Re-install the front cover with the bottom edge first and then rotate to snap the top two corners in place.



Oransi LLC  
 600 Congress Ave  
 Floor 14  
 Austin, TX 78701

[www.oransi.com](http://www.oransi.com)