

ADDENDUM NO. 2

DATE: 2018-07-03

TOTAL PAGES 7 Pages

TO: All Tenderers

RE: Greenwood Street Improvements
City of Greenwood: 2018-T01

Tenderers are advised that Addendum No. 2 is hereby issued. This Addendum forms part of the *Contract Documents* for the above referenced tender.

Tenders are responsible for acknowledging receipt of the Addendum by entering this Addendum number into the Form of Tender.

1. Precedence

This Addendum shall form an integral part of the *Contract Documents*. This Addendum shall take precedence over all requirements of the Tender Documents with which it is in variance, unless otherwise qualified by way of a subsequent Addendum.

2. Purpose

The purpose of this Addendum is to:

Respond to questions from tenderers and to re-issue the Schedule of Quantities and Prices (Appendix 1).

3) Questions and Responses

A) Question: Is there a more specific electrical drawing available?

Response: A power source has not yet been secured from Fortis Electric. Tenderers are to base their tenders on the items that are identified within the Schedule of Quantities and Prices. A Provisional Sum is included as Unit Rate 2.05. This Provisional Sum will be utilized as a "contingency" (or budget) for the cost of the electrical service and for the electrical works (wiring, etc).

A) Question: Item 2.01 Supply and Install post w/ GFI Receptacle – it mentions a pressure treated post. What are the dimensions required? Also, would a metal stake be acceptable?

Response: Energia Power Post with GFI only per L100. (delete mounting instructions on L100)

B) Question: Is there any further information that can be provided on the TFI Lighting product?

Response: refer to: <http://www.energiapowerpost.com/> or approved equal.

C) Question: Is there any further description for Item 2.05 Electrical Drop Services, individual feature servicing (Provisional)?

Response: This is a budget value (provisional sum) to cover the cost of the new electrical service(s) and for the wiring of the various electrical work.

D) Question: What type of footing is required for the Ashbery Path Light Bollard and Uplight?

Response: refer to: http://www.landscapeforms.com/en-US/Installation%20Guides/LF_AshberyPathLight_Installation_Guide.pdf

E) Question: Which distribution type is required for the Ashbery light? Type 4 or Type 5?

Response: Lamp is to be a type 5 or 012L5

F) Question: What temp light does the owner want – 40k, 35k or 30k?

Response: 30K

G) Question: What type of hydrant is required?

Response: Terminal City H105

H) Can you provide a detail for the sidewalk let downs with Armour Tile?

Response: Tactile warning strips are not required for the 4.0m and the 4.5m letdowns. A detail of the 1.5m letdowns is included as part of this addendum.

4.0 Appendix 1 Schedule of Quantities and Prices

Delete: Appendix 1 Schedule of Quantities and Prices

Replace with: Appendix 1 Schedule of Quantities and Prices–Addendum 2, July 3, 2018

Description of changes:

- Add unit rate item: 5.091
- Revise the quantities of unit rate items: 5.12, 5.26, 5.28, 5.30, 5.31, 5.33.
- Eliminate the tactile warning strips from unit rate items: 1.04 and 1.05.

A sketch that depicts the changes to the design is attached to this addendum (red text and red-clouds).

END OF ADDENDUM NO. 2

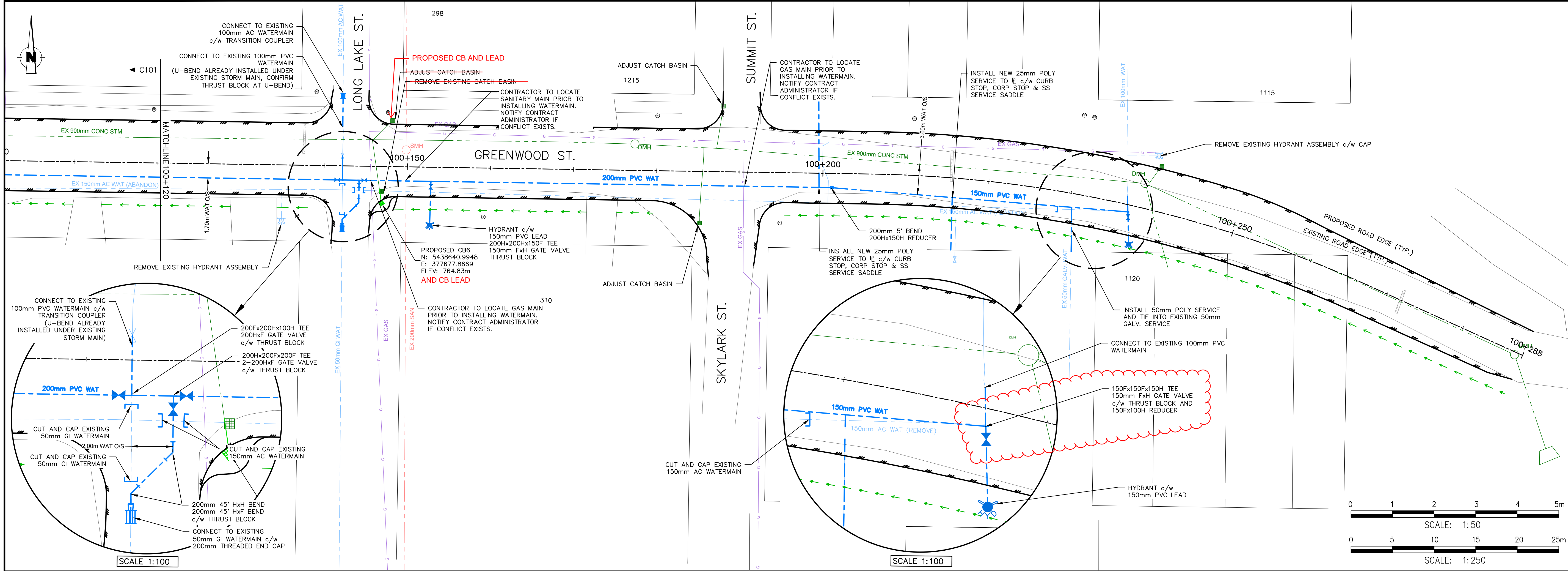
Item	MMCD Spec	Payment Clause	Description of Item	Unit	Quantity	Unit Rate	Total
0.00 Division 01 - General							
0.01	01 53 01	SPP-01	Mobilization and Demobilization	LS	1		
0.02	01 33 01	SPP-02	Survey Layout and Record Survey	LS	1		
0.03	01 55 00	SPP-03	Traffic Control, Access, and Parking	LS	1		
0.04	ITS.2/GC24	SPP-04	Bonding/Insurance (Actual Cost)	LS	1		
						Subtotal	
1.00 Division 03 - Concrete							
Civil Concreting							
1.01	03 30 20	1.4.3	Concrete Barrier Curb and Gutter, MMCD C4	l.m	283		
1.02	03 30 20	1.4.5	Concrete Driveway,	sq.m	10		
1.03	03 30 20	1.4.5	Letdown, 1.5m (includes Armour Tile or Adatile Tactile Warning Strip, or equiv)	ea.	5		
1.04	03 30 20	1.4.5	Letdown, 4.0m (includes Armour Tile or Adatile Tactile Warning Strip, or equiv)	ea.	2		
1.05	03 30 20	1.4.5	Letdown, 4.5m (includes Armour Tile or Adatile Tactile Warning Strip, or equiv)	ea.	2		
LA Hardscaping							
1.06	03 30 20	1.4.5	Supply and install C.I.P. concrete c/w sawcuts. Natural colour, light broom finish. 100mm depth. Price includes base aggregates. (Type 1)	sq.m	192		
1.07	03 30 20	1.4.5	Supply and install C.I.P. reinforced concrete c/w sawcuts. Natural colour, medium broom finish. 200mm depth. Price includes base aggregates and reinforcing. (Type2)	sq.m	74		
1.08	03 30 20	1.4.5	Supply and install C.I.P. concrete sidewalks c/w tooled joints. Natural colour, medium broom finish. 100mm depth. Price includes base aggregates. (Type3)	sq.m	442		
1.09	03 30 20	1.4.3	Supply and install 450mm wide C.I.P. concrete banding c/w sawcuts. Davis colour (pewter), light broom finish. 100mm depth. Price includes base aggregates. (Type4)	sq.m	20		
1.10	03 30 20	1.4.3	Supply and install 450mm wide C.I.P. reinforced concrete banding c/w sawcuts. Natural colour, light broom finish. 200mm depth. Price includes base aggregates and reinforcing. (Type5)	sq.m	8		
						Subtotal	
2.00 Division 26 - Electrical							
2.01	26 56 01	1.9.2	Supply and install Post w/ GFI Receptacles - TFI Lighting Product	ea.	8		
2.02	26 56 01	1.9.2	MOT Type 12 Plastic Junction Box	ea.	10		
2.03	26 56 01	1.9.2	4 - 50mm DB2 Conduit, adjacent to Highway 3	l.m	56		
2.04	26 56 01	1.9.2	3 - 50mm DB2 Conduit, along Greenwood Street	l.m	200		
2.05	26 56 01	--	Electrical Drop Services, individual feature servicing (Provisional)	PS	1	\$ 20,000.00	\$ 20,000.00
						Subtotal	
3.00 Division 31 - Earthworks							
Site Preparation							
3.01	31 11 01	1.4.1	Clearing and Grubbing	LS	1		
3.02	31 24 13	1.8.4	Removal of Existing Features (curb, culverts, catchbasins, etc.) as required by Contract Drawings	LS	1		
3.03	31 22 16	1.4.1	Reshape 75mm Granular Sub-base; re-use surplus onsite.	sq.m	1560		
Excavation							
3.04	31 23 01	1.10.7	Regrade Drainage Swales at Roadside	l.m	240		
3.05	31 23 01	SPP-05	Common Excavation (Cut to Fill Onsite)	cu.m	100		
3.06	31 23 01	SPP-06	Common Excavation (Dispose Offsite)	cu.m	300		
3.07	31 24 13	SPP-07	Import Suitable Structural Fill, Dispose of Unsuitable Fill Offsite	cu.m	50		
Landscaping							
3.08	31 23 01	SPP-06	Shrub bed excavation (300mm depth) and disposal	cu.m	168		
3.09	31 23 01	SPP-05	Fine Site Grading in Planting Areas (+/- 100mm)	sq.m	560		
3.10	31 37 10	1.4.1	100-200mm washed river rock (1 part 50mm, 1 part 100mm, 1 part 150mm). 100mm depth. Price Includes geotextile.	sq.m	302		
						Subtotal	
4.00 Division 32 - Road and Site Improvements (Civil Works)							
Granular Materials							
4.01	32 11 16.1	1.4.3	75mm Granular Subbase, 355mm Depth	sq.m	2175		
4.02	32 11 23	1.4.2	25mm Granular Road Base, 125mm Depth (Install Only - Supplied by Owner)	sq.m	3250		
4.03	32 11 23	1.4.2	25mm Granular Road Base, 125mm Depth (Supply and Install)	sq.m	850		
4.04	32 11 23	1.4.2	25mm Granular Base, 50mm Depth - Driveways/Tie-Ins	sq.m	70		
Asphalt Paving							
4.05	32 12 16	SPP-08	Asphalt Pavement, 50mm Depth	sq.m	3615		
Site Improvements							
4.06	32 17 23	1.5.2	Painted Pavement Markings (Centerline, 2 Fog Lines)	LS	1		
4.07	32 17 23	1.5.2	Painted Pavement Markings (All Others)	LS	1		
						Subtotal	

Item	MMCD Spec	Payment Clause	Description of Item	Unit	Quantity	Unit Rate	Total
4.00	Division 32 - Road and Site Improvements (Landscape Works)						
4.08	32 91 21S	1.4.1	Growing medium for trees	cu.m	10		
4.09	32 91 21S	1.4.1	Growing medium for planting beds (300mm depth)	cu.m	168		
4.10	32 91 21S	1.4.1	Growing medium for seeding (100mm depth)	cu.m	20		
4.11	32 91 21S	1.4.1	Composted bark mulch for all planting beds (75mm depth)	sq.m	360		
4.12	32 92 19	1.8.1.,2	Hydroseeding (including disturbed areas)	sq.m.	500		
			Division 32 - Road and Site Improvements (Landscaping Works)			Subtotal	
5.00	Division 33 - Utilities						
	Waterworks						
5.01	33 11 01	1.8.2	250mm HDPE Watermain	l.m	16		
5.02	33 11 01	1.8.2	200mm PVC C900 DR18 Class 235 Watermain	l.m	403		
5.03	33 11 01	1.8.2	200mm Urecon Pipe Insulation (2 Piece Style) Watermain	l.m	6		
5.04	33 11 01	1.8.2	150mm PVC C900 DR18 Class 235 Watermain	l.m	49		
5.05	33 11 01	1.8.2	100mm PVC C900 DR18 Class 235 Watermain	l.m	7		
5.06	33 11 01	1.8.3	200x200x200x200 Crosss c/w Thrust Block or Joint Restraints	ea.	1		
5.07	33 11 01	1.8.3	200x200x200 Tee c/w Thrust Block or Joint Restraints	ea.	5		
5.08	33 11 01	1.8.3	200x200x150 Tee c/w Thrust Block or Joint Restraints	ea.	1		
5.09	33 11 01	1.8.3	200x200x100 Tee c/w Thrust Block or Joint Restraints	ea.	2		
5.091	33 11 01	1.8.3	150x150x100 Tee c/w Thrust Block or Joint Restraints	ea.	1		
5.10	33 11 01	1.8.3	200mm 5° Bend c/w Thrust Block or Joint Restraints	ea.	1		
5.11	33 11 01	1.8.3	200mm 45° Bend c/w Thrust Block or Joint Restraints	ea.	18		
5.12	33 11 01	1.8.3	150mm 90° Bend c/w Thrust Block or Joint Restraints	ea.	0		
5.13	33 11 01	1.8.3	200mm Gate Valve	ea.	15		
5.14	33 11 01	1.8.3	150mm Gate Valve	ea.	1		
5.15	33 11 01	1.8.3	100mm Gate Valve	ea.	2		
5.16	33 11 01	1.8.3	250x200 Reducer	ea.	2		
5.17	33 11 01	1.8.3	200x150 Reducer	ea.	6		
5.18	33 11 01	1.8.3	200x100 Reducer	ea.	2		
5.181	33 11 01	1.8.3	150x100 Reducer	ea.	1		
5.19	33 11 01	1.8.3	Transition Coupler (Restraining)	ea.	6		
5.20	33 11 01	1.8.3	Transition Coupler (Non-Restraining)	ea.	6		
5.21	33 11 01	1.8.3	200mm Threaded End Cap	ea.	1		
5.22	33 11 01	SPP-09	25mm Muncipex (Poly) Service, including Corp Stop, Curb Stop, SS Service Sadle	ea.	3		
5.23	33 11 01	SPP-09	50mm Muncipex (Poly) Service, including Corp Stop, Curb Stop, SS Service Sadle	ea.	3		
5.24	33 11 01	1.8.4	32mm Poly Irrigation Service	ea.	2		
5.25	33 11 01	SPP-10	Fire Hydrant Assembly (Includes 150mm PVC Lead, 200x200x150 Tee, 150mm Gate Valve and Thrust Block)	ea.	4		
5.26	33 11 01	SPP-10	Fire Hydrant Assembly (Includes 150mm PVC Lead)	ea.	1		
5.27	33 11 01	1.8.13	Water Tie-Ins	ea.	12		
	Storm Sewers						
5.28	33 40 01	1.6.5	200mm PVC UltraRib CB Lead	l.m	37		
5.29	33 40 01	1.6.3	100mm PVC Storm Service	ea.	1		
5.30	33 40 01	1.6.9	Tie-Into Existing Catch Basin Lead	ea.	5		
	Manholes & Catchbasins						
5.31	33 44 01	1.5.2	900mm Catch Basin, c/w frame and grate	ea.	6		
5.32	33 44 01	1.5.3	Adjust Existing Manholes as required	LS	1		
5.33	33 44 01	1.5.3	Adjust Existing Catch Basins as required	ea.	5		
5.34	33 44 01	1.5.3	Relocate Existing Catch Basins as required	ea.	1		
			Division 33 - Utilities			Subtotal	
6.00	Division 34 - Transportation						
6.01	34 41 13	1.9.1	Supply and Install New Traffic Signage, Remove or Relocated Existing Signage	LS	1		
			Division 34 - Transportation			Subtotal	

Summary	
Section 0	Division 01 - General
Section 1	Division 03 - Concrete
Section 2	Division 26 - Electrical
Section 3	Division 31 - Earthworks
Section 4	Division 32 - Road and Site Improvements (Civil Works)
Section 4	Division 32 - Road and Site Improvements (Landscape Works)
Section 5	Division 33 - Utilities
Section 6	Division 34 - Transportation
Base Contract Total	
GST	
Base Contract Total + GST	

Item	MMCD Spec	Payment Clause	Description of Item	Unit	Quantity	Unit Rate	Total	
99.00	OPTIONAL WORK							
	Electrical							
99.01	26 56 01	1.9.1	Ashbery Path Light Bollard, including footing	ea.	22			
2.02	26 56 01	1.9.1	Ashbery Uplight, including footing	ea.	8			
	Trees/Shrubs/Grasses/Perennials							
2.03	32 93 01	1.9.1	Hot wings Tatarian Maple, <i>Acer tataricum</i> 'GarAnn' – 5.0cm Cal.	ea.	10			
2.04	32 93 01	1.9.1	Swedish Columnar Aspen, <i>Populus tremula</i> 'Erecta' – 6.0cm Cal.	ea.	10			
2.05	32 93 01	1.9.1	Drumstick Allium, <i>Allium schoenoprasum</i> - bulbs	ea.	55			
2.06	32 93 01	1.9.1	Blue Oat Grass #01, <i>Helictotrichon sempervirens</i>	ea.	56			
2.07	32 93 01	1.9.1	Alpine Carpet Juniper #02, <i>Juniperus communis</i> 'Mondap'	ea.	118			
2.08	32 93 01	1.9.1	Red Head Fountain Grass #01, <i>Pennisetum alopecuroides</i> 'Red Head'	ea.	467			
2.09	32 93 01	1.9.1	Diablo Ninebark #05, <i>Physocarpus opulifolius</i> 'Diablo'	ea.	7			
2.10	32 93 01	1.9.1	City Green root barrier - 'Re-Root 300'	l.m.	14			
	Site Furnishings							
2.11	32 40 01S	1.8.1	Pedestrian Bollard	ea.	8			
2.12	32 40 01S	1.8.1	Bike Rack, Wishbones site Furnishing - Classic 2 Space CBR-44S	ea.	2			
2.13	32 40 01S	1.8.1	Modena Curved top Double Recycling Station, Wishbones site Furnishing - MCTRS-39	ea.	2			
2.14	32 40 01S	1.8.1	Park Bench, Wishbone Furnishing - Mountain Classic Wide Body (72") - MCWB-6	ea.	2			
2.15	32 40 01S	1.8.1	Park Bench, Wishbone Furnishing - Mountain Classic Wide Body (60") - MCWB-5	ea.	2			
2.16	32 40 01S	1.8.1	Fixed Park Table, Wishbone Furnishing - Mountain Classic Coffe Table - MCCT-37	ea.	1			
2.17	32 40 01S	1.8.1	Decorative Boulders	ea.	27			
2.18	32 40 01S	1.8.1	1"x4" Bendaboard Edging	l.m.	86			
2.19	32 40 01S	1.8.1	6x6" Cedar Post Split Rail Fence	l.m.	25			
	Irrigation							
2.20	32 84 00S	1.7.1	1" POC c/w valve boxes, backflow, fittings	ea.	2			
2.21	32 84 00S	1.7.2	1" Schedule 40 PVC Mainline w/ fittings	l.m.	28			
2.22	32 84 00S	1.7.2	1" Class 200 PVC Lateral w/ fittings	l.m.	300			
2.23	32 84 00S	1.7.2	2" Schedule 40 PVC Sleeving	l.m.	65			
2.24	32 84 00S	1.7.1	Drip Zone Kit c/w fittings, valve boxes	ea.	5			
2.25	32 84 00S	1.7.1	Electrical Control Valve c/w fittings, valve boxes	ea.	2			
2.26	32 84 00S	1.7.1	Rain Bird 1804-PRS c/w MPR nozzle, swing joint	ea.	24			
2.27	32 84 00S	1.7.2	1/2" Dripline w/ 2gph emitters	l.m.	755			
2.28	32 84 00S	1.7.1	Flush Valve Assembly	ea.	16			
2.29	32 84 00S	1.7.1	Hunter Node 200	ea.	3			
2.30	32 84 00S	1.7.1	Hunder Node 100	ea.	1			
2.31	32 84 00S	1.7.3	As-built drawings	LS	1			
	OPTIONAL WORK						Subtotal	

Base Contract Total (from Page 2, excluding GST)	
Optional Work Subtotal	
Base Contract + Optional Work Total	
GST	
Base Contract + Optional Work Total + GST	



Legend

- Watermain
- Sanitary Sewer
- Storm Sewer
- Gas
- Electrical
- Fibre/Shaw Cable
- Pavement Edge
- Gravel Edge
- Limit of Works
- Top of Slope
- Toe of Slope
- Ditch
- Hydrant
- Reducer
- ROBAR Coupling
- Sewer Manhole
- Storm Manhole
- Catch Basin
- Street Light
- Utility Pole
- Street Sign
- Junction Box

NOTES:
 • OBJECTS WITH HEAVIER LINE WEIGHTS ARE DENOTING PROPOSED WORKS.

SCALE:
 0 1 2 3 4 5m
 SCALE: 1:50
 0 5 10 15 20 25m
 SCALE: 1:250

DISCLAIMER:
 THIS DRAWING AND DESIGN IS COPYRIGHT PROTECTED WHICH SHALL NOT BE USED, REPRODUCED, OR REVISED WITHOUT WRITTEN PERMISSION BY WSP. THE CONTRACTOR SHALL CHECK AND VERIFY ALL DIMENSIONS AND UTILITY LOCATIONS AND REPORT ALL ERRORS AND OMISSIONS PRIOR TO COMMENCING WORK.

ISSUED FOR: -REVISION-

NO.	DATE	DESCRIPTION
2	2018-06-06	ISSUED FOR TENDER
1	2018-05-11	ISSUED FOR REVIEW

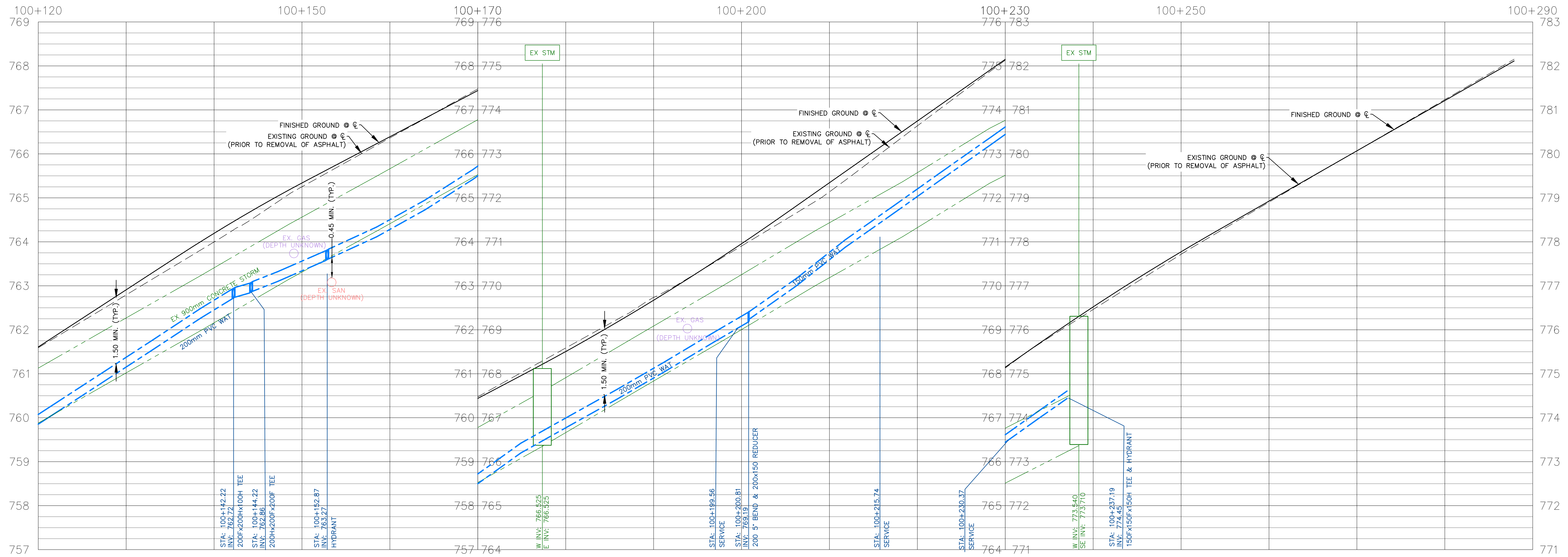
PROJECT NO: 17M-02027-01
DATE: 2018-06-06
ORIGINAL SCALE: H 1:250; V 1:50
DESIGNED BY: CTE
DRAWN BY: CTE
CHECKED BY: JR
APPROVED BY: AT

DISCIPLINE: CIVIL

WSP
 Suite 602, Landmark II, 1708 Dolphin Avenue, Kelowna, BC V1Y 9S4
 T 250 489-7736 | F 250 950-5511 | C 250-808-2284
 WWW.WSPGROUP.COM

CLIENT: CITY OF GREENWOOD
CLIENT REF #: 17M-02027-01
PROJECT: GREENWOOD ST. IMPROVEMENTS
TITLE: GREENWOOD ST. UTILITIES PLAN-PROFILE 100+120 TO 100+290

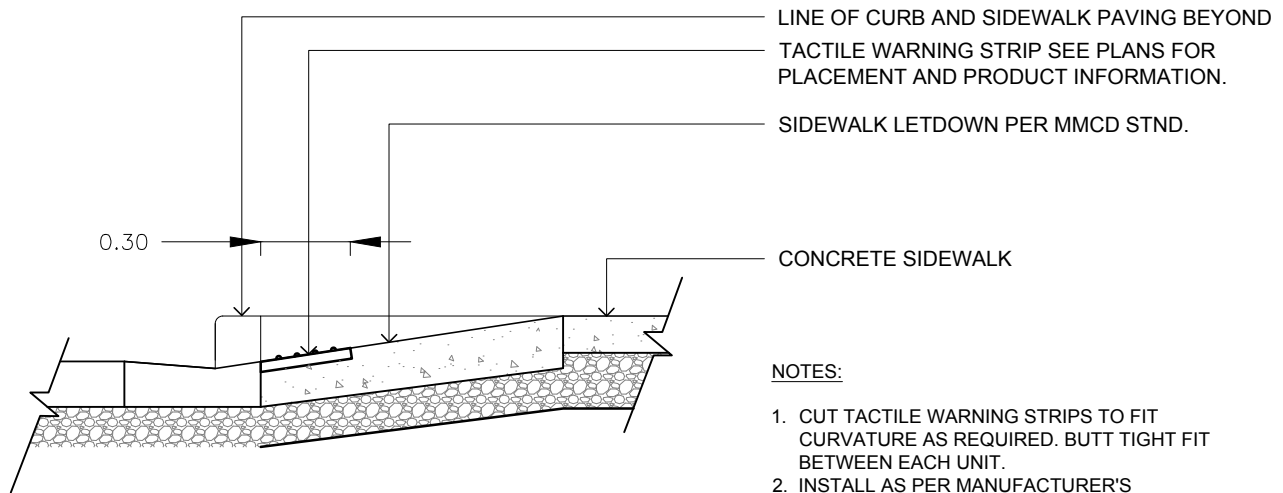
DRAWING NUMBER: C102
SHEET #: 6 of 19
ISSUE: FOR TENDER
DATE OF: 2018-06-06



ADDENDUM 2
2018-07-03

FILE: w:\17m\02027-01_greenwood_street_restoration3_sheets\17m-02027-01-plan-profile.dwg PLOTTED: 2018-06-14 1:07 PM

R:\CADD\4-Blocks\Details\Seam's Details\Roads\DETAIL-ROAD-TACTILE WARNING STRIP.dwg Jul 03, 2018-11:23am BY: (bathj)



NOTES:

1. CUT TACTILE WARNING STRIPS TO FIT CURVATURE AS REQUIRED. BUTT TIGHT FIT BETWEEN EACH UNIT.
2. INSTALL AS PER MANUFACTURER'S INSTRUCTIONS.
3. INSTALLATION TO BE SUPERVISED BY CONTRACT ADMINISTRATOR.



Suite 602, Landmark II, 1708 Dolphin Avenue
Kelowna, BC V1Y 9S4
T 250 980-5500 | WWW.WSPGROUP.COM

PROJECT:

CITY OF GREENWOOD - GREENWOOD STREET ROAD RECONSTRUCTION

TITLE:

DETAIL - TACTILE WARNING STRIP AT PEDESTRIAN CURB LETDOWN

SCALE:

1:25

DATE:

2018-07-03

PROJECT NO:

17M-02027-00

DRAWING NO:

SK01