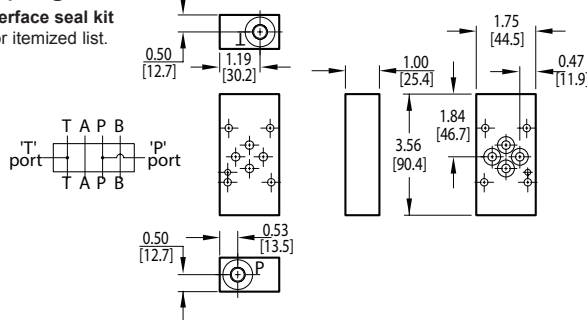


# D03 Tapping Plates

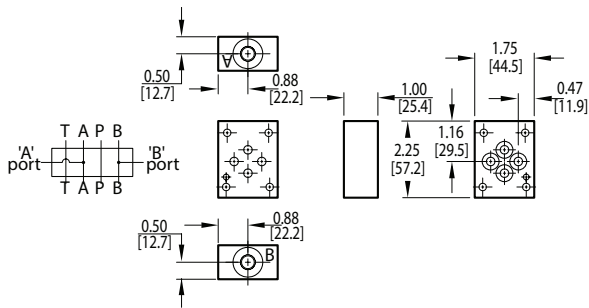
## P and T Port Tapping Plate

Tapping Plate hardware / interface seal kit is supplied. See page 180 for itemized list.



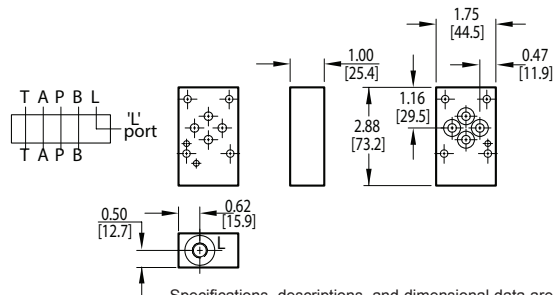
## A and B Port Tapping Plate

Tapping Plate hardware / interface seal kit is supplied. See page 180 for itemized list.



## L Port Tapping Plate

Tapping Plate hardware / interface seal kit is supplied. See page 180 for itemized list.



Specifications, descriptions, and dimensional data are subject to correction or change without notice or incurring obligation. Download latest catalog page revisions at [www.daman.com](http://www.daman.com).

# Ordering Information

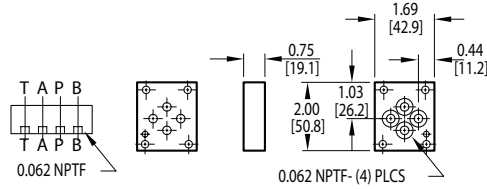
Material	Valve Pattern	Product Type	Circuit	Port Threads																																				
<table border="1"> <thead> <tr> <th colspan="2">Material</th> </tr> </thead> <tbody> <tr> <td><b>A</b></td> <td>Aluminum - 6061-T6 3000<sup>†</sup> psi • 20.7 MPa</td> </tr> <tr> <td><b>D</b></td> <td>Ductile Iron - D4512 5000<sup>†</sup> psi • 34.5 MPa</td> </tr> <tr> <td colspan="2"><sup>†</sup> Working pressure should be considered in accordance with ISO 4413 to determine appropriate material type.</td> </tr> </tbody> </table>	Material		<b>A</b>	Aluminum - 6061-T6 3000 <sup>†</sup> psi • 20.7 MPa	<b>D</b>	Ductile Iron - D4512 5000 <sup>†</sup> psi • 34.5 MPa	<sup>†</sup> Working pressure should be considered in accordance with ISO 4413 to determine appropriate material type.		<table border="1"> <thead> <tr> <th colspan="2">Valve Pattern</th> </tr> </thead> <tbody> <tr> <td><b>D03</b></td> <td>ISO 4401-03-02 NFA T3.5.1-D03 See Tech Infomation</td> </tr> </tbody> </table>	Valve Pattern		<b>D03</b>	ISO 4401-03-02 NFA T3.5.1-D03 See Tech Infomation	<table border="1"> <thead> <tr> <th colspan="2">Product Type</th> </tr> </thead> <tbody> <tr> <td><b>TP</b></td> <td>Tapping Plate</td> </tr> </tbody> </table>	Product Type		<b>TP</b>	Tapping Plate	<table border="1"> <thead> <tr> <th colspan="2">Circuit</th> </tr> </thead> <tbody> <tr> <td><b>PT</b></td> <td>P and T ports provided</td> </tr> <tr> <td><b>AB</b></td> <td>A and B ports provided</td> </tr> <tr> <td><b>L</b></td> <td>L port provided</td> </tr> </tbody> </table>	Circuit		<b>PT</b>	P and T ports provided	<b>AB</b>	A and B ports provided	<b>L</b>	L port provided	<table border="1"> <thead> <tr> <th colspan="2">Port Threads</th> </tr> </thead> <tbody> <tr> <td><b>4P</b></td> <td>0.25-18 NPTF ANSI B1.20.3</td> </tr> <tr> <td><b>4S</b></td> <td>-4 SAE ISO 11926; SAE 1926</td> </tr> <tr> <td><b>4B</b></td> <td>0.25-19 BSPP ISO 1179; BS 2779</td> </tr> <tr> <td><b>4M</b></td> <td>M10 x 1.0 ISO 6149</td> </tr> <tr> <td><b>4T</b></td> <td>0.25-19 BSPT ISO 7; BS 21</td> </tr> </tbody> </table>	Port Threads		<b>4P</b>	0.25-18 NPTF ANSI B1.20.3	<b>4S</b>	-4 SAE ISO 11926; SAE 1926	<b>4B</b>	0.25-19 BSPP ISO 1179; BS 2779	<b>4M</b>	M10 x 1.0 ISO 6149	<b>4T</b>	0.25-19 BSPT ISO 7; BS 21
Material																																								
<b>A</b>	Aluminum - 6061-T6 3000 <sup>†</sup> psi • 20.7 MPa																																							
<b>D</b>	Ductile Iron - D4512 5000 <sup>†</sup> psi • 34.5 MPa																																							
<sup>†</sup> Working pressure should be considered in accordance with ISO 4413 to determine appropriate material type.																																								
Valve Pattern																																								
<b>D03</b>	ISO 4401-03-02 NFA T3.5.1-D03 See Tech Infomation																																							
Product Type																																								
<b>TP</b>	Tapping Plate																																							
Circuit																																								
<b>PT</b>	P and T ports provided																																							
<b>AB</b>	A and B ports provided																																							
<b>L</b>	L port provided																																							
Port Threads																																								
<b>4P</b>	0.25-18 NPTF ANSI B1.20.3																																							
<b>4S</b>	-4 SAE ISO 11926; SAE 1926																																							
<b>4B</b>	0.25-19 BSPP ISO 1179; BS 2779																																							
<b>4M</b>	M10 x 1.0 ISO 6149																																							
<b>4T</b>	0.25-19 BSPT ISO 7; BS 21																																							

For **coating options** see pages 245-246.

# D03 Tapping Plates

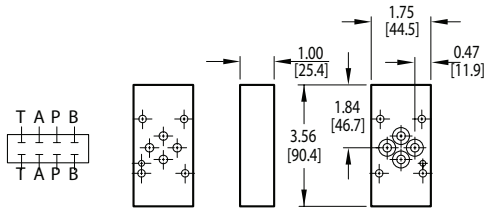
## Orifice Tapping Plate

Tapping Plate hardware / interface seal kit is supplied. See page 180 for itemized list.



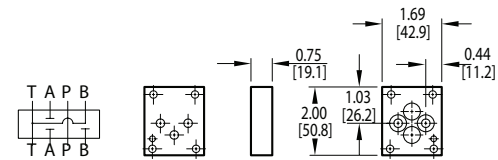
## Spot Drilled Tapping Plate

Tapping Plate hardware / interface seal kit is supplied. See page 180 for itemized list.



## B to T vent Tapping Plate

Tapping Plate hardware / interface seal kit is supplied. See page 180 for itemized list.



Specifications, descriptions, and dimensional data are subject to correction or change without notice or incurring obligation. Download latest catalog page revisions at [www.daman.com](http://www.daman.com).

# Ordering Information

Material	Valve Pattern	Product Type	Circuit
----------	---------------	--------------	---------

For **coating options** see pages 245-246.

Material	
<b>A</b>	Aluminum - 6061-T6 3000† psi • 20.7 MPa
<b>D</b>	Ductile Iron - D4512 5000† psi • 34.5 MPa

† Working pressure should be considered in accordance with ISO 4413 to determine appropriate material type.

Product Type	
<b>TP</b>	Tapping Plate

Valve Pattern	
<b>D03</b>	ISO 4401-03-02 NFPA T3.5.1-D03 See Tech Information

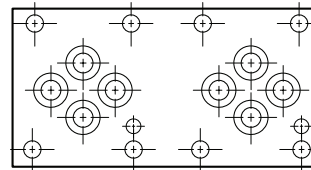
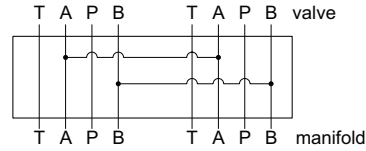
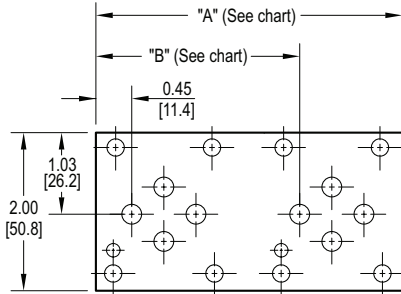
Circuit	
<b>SD</b>	Spot drilled ports
<b>OP</b>	Orifice plate
<b>BTV</b>	B to T vent plate

# D03 Tapping Plates

## D03 Two Station Tapping Plate

A<sub>1</sub> common to A<sub>2</sub>, B<sub>1</sub> common to B<sub>2</sub>

Tapping Plate hardware / interface seal kit is supplied. See page 180 for itemized list.



Dimension	A	B
*D03TP022AB	3.88 [98.6]	2.58 [65.5]
*D03TP024AB	5.75 [146.1]	4.45 [113.1]
L*D03TP022AB	3.75 [95.3]	2.45 [62.3]

There are two different tapping plate models with spacing code 2 available. This is necessary to cover the variation of valve spacing between the standard design and the FlexMount design of D03 manifolds. The standard manifold design has 2.125" valve spacing while the FlexMount design has 2.000" valve spacing. An L is added to the front of the model number to denote the tapping plate designed to be used with the FlexMount manifold. Note that a single model is required with spacing code 4 as both the standard and FlexMount designs have 4.000 spacing.

Specifications, descriptions, and dimensional data are subject to correction or change without notice or incurring obligation. Download latest catalog page revisions at [www.daman.com](http://www.daman.com).

## Ordering Information

For **coating options** see pages 245-246.

