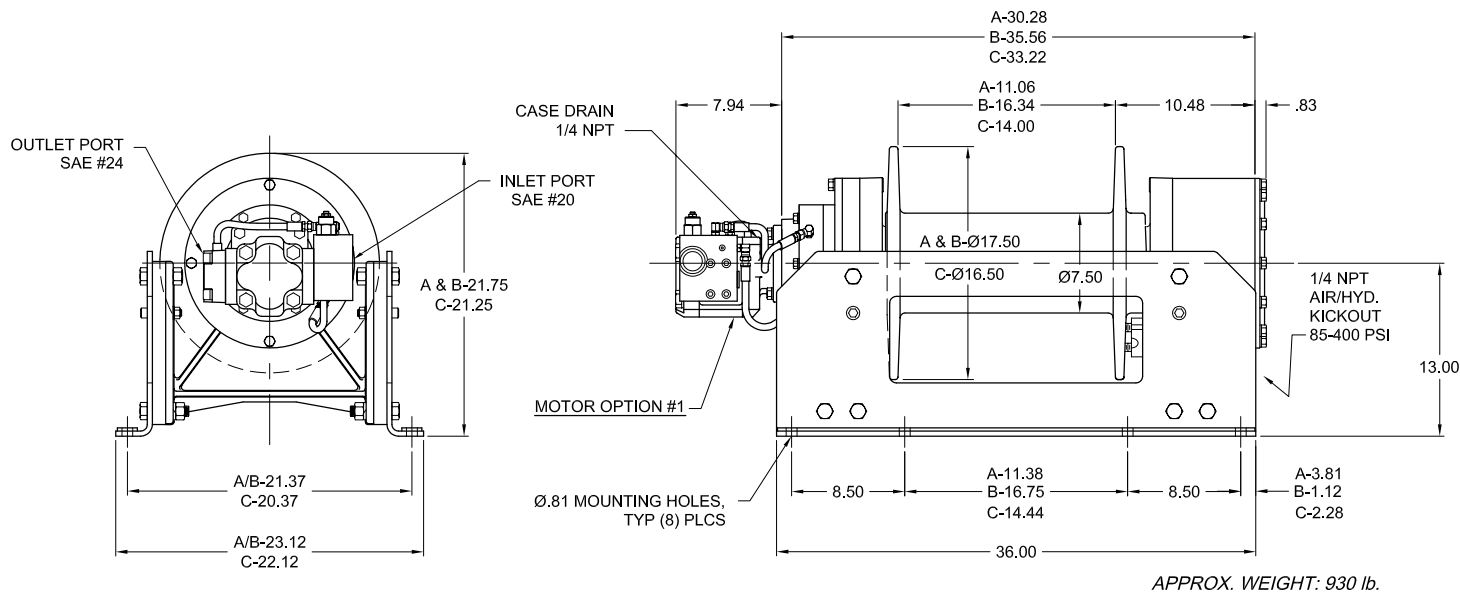




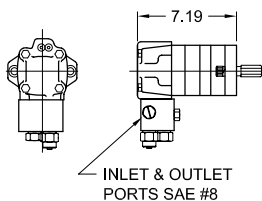
Model 50

50,000 lb.

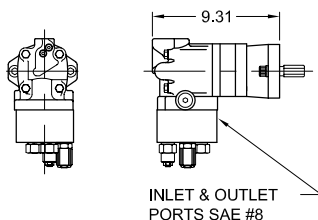


OPTIONAL MOTORS

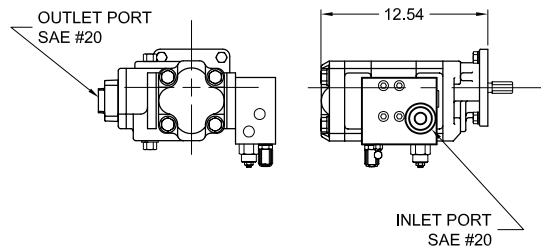
MOTOR OPTION #2
LOW FLOW MOTOR



MOTOR OPTION #3 & 9
LOW FLOW 2 SPEED MOTOR



MOTOR OPTION #5 & 6
HIGH FLOW 2 SPEED MOTOR



Contact your dp sales representative for additional options and features not shown.

Because of continued product improvement, we reserve the right to make changes without notice.

⚠ WARNING	⚠ CAUTION
Winches are not intended to be used for the lifting or moving of persons.	The last 5 wraps cable must be left on the drum to assist the cable clamp in holding the load.

dp Winch is a part of the Tulsa Winch Group, a worldwide provider of winch systems and electronic load information systems.

P.O.Box 1130
Jenks, OK 74037-1130
Voice: 918-298-8300
Fax: 918-298-8301
www.dpwinch.com





Model 50

50,000 lb.

MOTOR OPTION #1 - HIGH FLOW

LAYER	LINE PULL (lbs)	LINE SPEED (fpm)
1	50000	38
2	41400	46
3	35300	53
4	30700	61
5	27200	69

Performance is based on 60 gpm @ 2750 psi with $\varnothing 7/8$ " wire rope.

MOTOR OPTION #2 - LOW FLOW

LAYER	LINE PULL (lbs)	LINE SPEED (fpm)
1	50000	16
2	41400	20
3	35300	23
4	30700	27
5	27200	30

Performance is based on 25 gpm @ 2900 psi with $\varnothing 7/8$ " wire rope.

2 SPEED MOTOR OPTIONS #3 & 9 - LOW FLOW

LAYER	LINE PULL (lbs)		LINE SPEED (fpm)	
	LOW	HIGH	LOW	HIGH
1	50000	25000	17	34
2	41400	20700	21	41
3	35300	17600	24	48
4	30700	15400	28	55
5	27200	13600	31	63

Performance is based on 24 gpm @ 2900 psi with $\varnothing 7/8$ " wire rope.

2 SPEED MOTOR OPTIONS #5 & 6 - HIGH FLOW

LAYER	LINE PULL (lbs)		LINE SPEED (fpm)	
	LOW	HIGH	LOW	HIGH
1	50000	25000	28	57
2	41400	20700	34	68
3	35300	17600	40	80
4	30700	15400	46	92
5	27200	13600	52	104

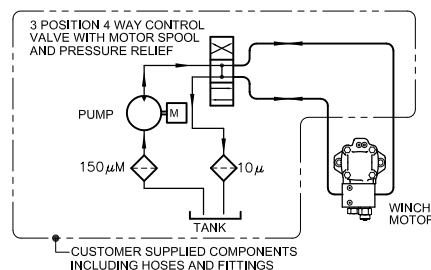
Performance is based on 45 gpm @ 2750 psi with $\varnothing 7/8$ " wire rope.

DRUM CAPACITIES - FT.

LAYER	$\varnothing 7/8$ " WIRE ROPE		
	A	B	C
1	25	37	32
2	55	81	70
3	90	134	115
4	131	194	166
5	177	261	224*

Drum capacities are in accordance with SAE J706.
Actual capacities are usually up to 10% greater than those shown.
* Layer does not meet SAE J706.

TYPICAL HYDRAULIC SYSTEM



The rated line pulls are for the winch only. Consult the wire rope manufacturer for wire rope ratings.

Because of continued product improvement, we reserve the right to make changes without notice.

WARNING	CAUTION
Winches are not intended to be used for the lifting or moving of persons.	The last 5 wraps cable must be left on the drum to assist the cable clamp in holding the load.

dp Winch is a part of the Tulsa Winch Group, a worldwide provider of winch systems and electronic load information systems.

P.O.Box 1130
Jenks, OK 74037-1130
Voice: 918-298-8300
Fax: 918-298-8301
www.dpwinch.com

