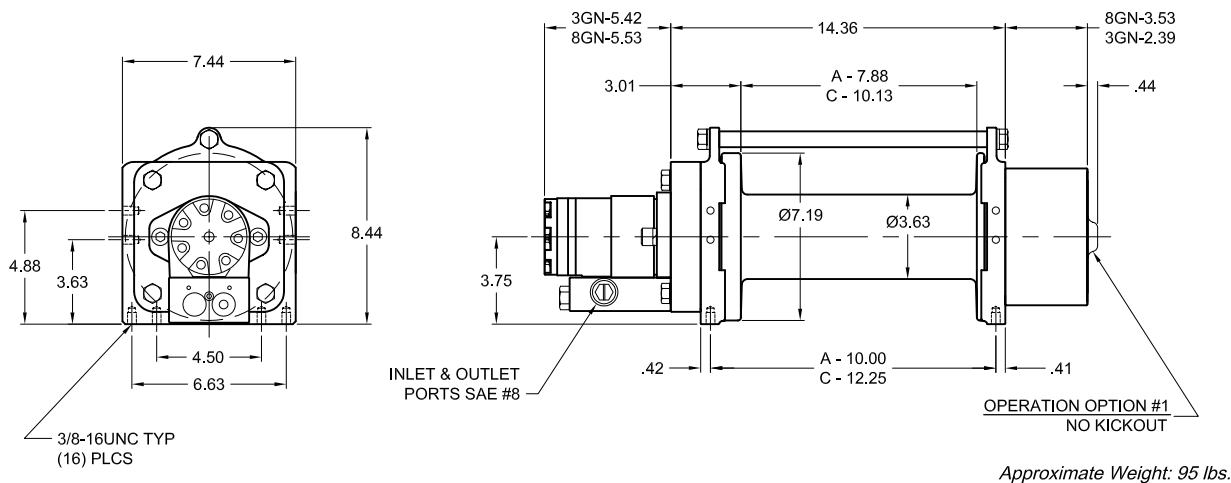




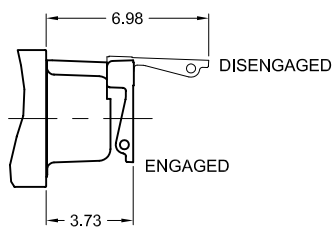
Model 3GN-8GN

3,000-8,000 lb.

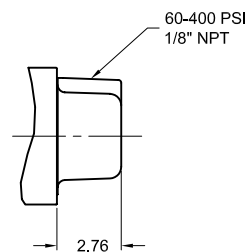


OPTIONAL FEATURES

OPERATION OPTION #5 MANUAL KICKOUT



OPERATION OPTION #4 AIR/HYD. KICKOUT



Contact your dp sales representative for additional options and features not shown.

Because of continued product improvement, we reserve the right to make changes without notice.

⚠ WARNING	⚠ CAUTION
Winches are not intended to be used for the lifting or moving of persons.	The last 5 wraps cable must be left on the drum to assist the cable clamp in holding the load.

dp Winch is a part of the Tulsa Winch Group, a worldwide provider of winch systems and electronic load information systems.

P.O.Box 1130
Jenks, OK 74037-1130
Voice: 918-298-8300
Fax: 918-298-8301
www.dpwinch.com





Model 3GN-8GN

3,000-8,000 lb.

MODEL 3GN

MOTOR OPTION #6

LAYER	LINE PULL (lbs)	LINE SPEED (fpm)
1	3000	167
2	2660	188
3	2380	210
4	2160	232
5	1980	253
6	1820	275
7	1690	296

Performance is based on 15 gpm @ 2750 psi (option #6), with Ø1/4" wire rope.

MODEL 8GN

MOTOR OPTION #1

LAYER	LINE PULL (lbs)	LINE SPEED (fpm)
1	8000	62
2	6740	73
3	5820	85
4	5120	96

Performance is based on 18 gpm @ 2500 psi (option #1), with Ø3/8" wire rope.

DRUM CAPACITIES - FT.

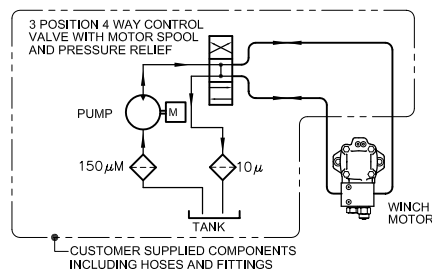
LAYER	Ø1/4" WIRE ROPE		Ø5/16" WIRE ROPE		Ø3/8" WIRE ROPE	
	A	B	A	B	A	B
1	29	37	23	30	20	25
2	61	79	50	65	43	56
3	97	125	81	104	70	91
4	137	177	116	149	100	130*
5	181	233	154*	198*	-	-
6	228	293	-	-	-	-
7	279*	359*	-	-	-	-

Drum capacities are in accordance with SAE J706.

Actual capacities are usually up to 10% greater than those shown.

* Layer does not meet SAE J706.

TYPICAL HYDRAULIC SYSTEM



The rated line pulls are for the winch only. Consult the wire rope manufacturer for wire rope ratings.

Because of continued product improvement, we reserve the right to make changes without notice.

⚠ WARNING	⚠ CAUTION
Winches are not intended to be used for the lifting or moving of persons.	The last 5 wraps cable must be left on the drum to assist the cable clamp in holding the load.

dp Winch is a part of the Tulsa Winch Group, a worldwide provider of winch systems and electronic load information systems.

P.O.Box 1130
Jenks, OK 74037-1130
Voice: 918-298-8300
Fax: 918-298-8301
www.dpwinch.com

