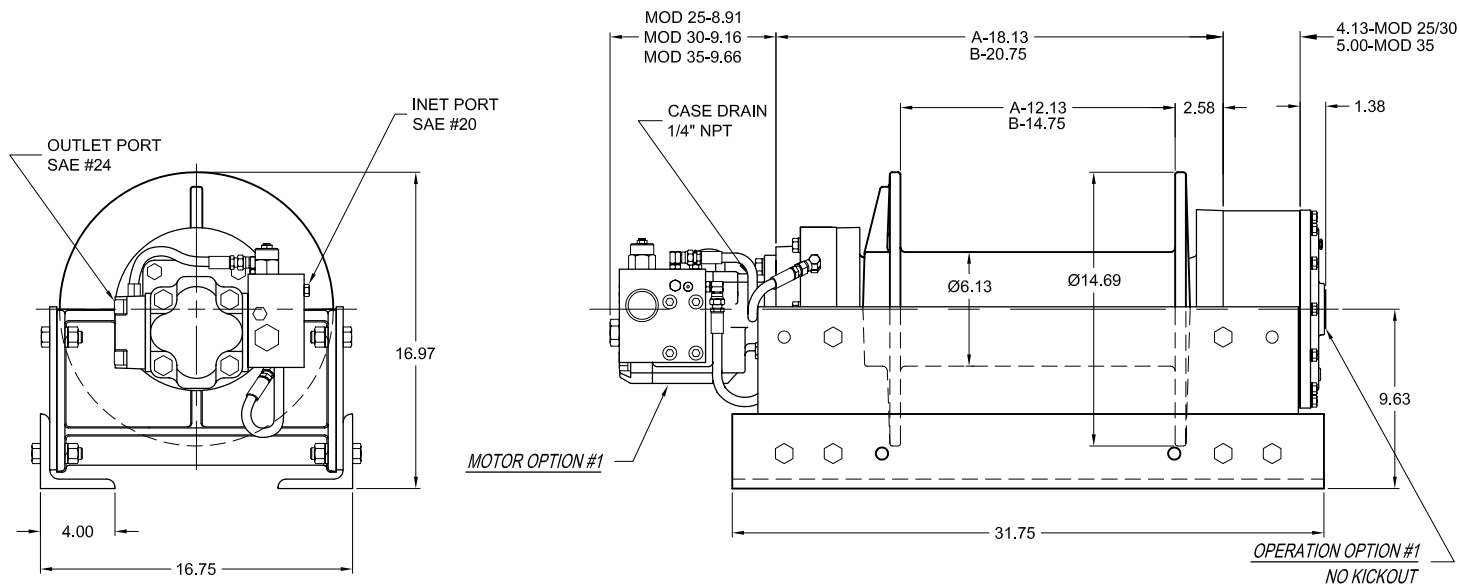




Model 25-30-35

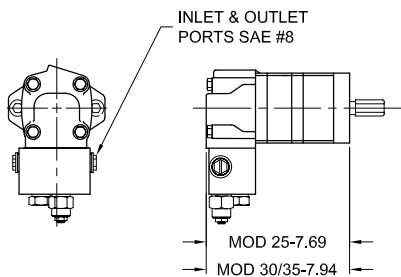
25,000-30,000-35,000 lb.



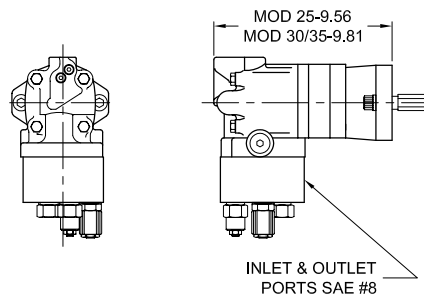
APPROX. WEIGHT: 645 lb.

OPTIONAL FEATURES

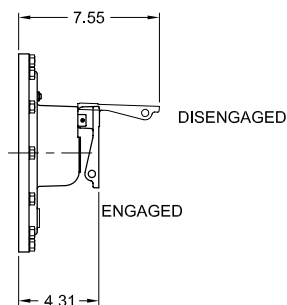
MOTOR OPTION #2 MEDIUM FLOW



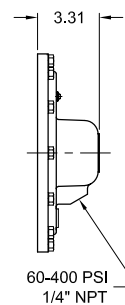
MOTOR OPTION #5 & 9 LOW FLOW 2 SPEED



OPERATION OPTION #5 MANUAL LEVER KICK OUT



OPERATION OPTION #4 AIR/HYDRAULIC KICKOUT



Contact your dp sales representative for additional options and features not shown.

Because of continued product improvement, we reserve the right to make changes without notice.

⚠ WARNING	⚠ CAUTION
Winches are not intended to be used for the lifting or moving of persons.	The last 5 wraps cable must be left on the drum to assist the cable clamp in holding the load.

dp Winch is a part of the Tulsa Winch Group, a worldwide provider of winch systems and electronic load information systems.

P.O.Box 1130
Jenks, OK 74037-1130
Voice: 918-298-8300
Fax: 918-298-8301
www.dpwinch.com





Model 25-30-35

25,000-30,000-35,000 lb.

MOTOR OPTIONS #1 & 2

LAYER	LINE PULL (lbs)	LINE SPEED (fpm)	
		OPTION #1	OPTION #2
1	25000	83	37
2	21400	97	44
3	18700	111	50
4	16600	125	56
5	14900	140	62
6	13600	154	69
7	12400	168	75

Performance is based on 60 gpm @ 2850 psi (option #1), 25 gpm @ 3000 psi (option #2) with Ø9/16" wire rope.

MODEL 25

2 SPEED MOTOR OPTIONS #5 & 9

LAYER	LINE PULL (lbs)		LINE SPEED (fpm)	
	LOW	HIGH	LOW	HIGH
1	25000	12500	28	57
2	21400	10700	33	66
3	18700	9350	38	76
4	16600	8310	43	85
5	14900	7470	47	95
6	13600	6790	52	104
7	12400	6220	57	114

Performance is based on 20 gpm @ 2900 psi with Ø9/16" wire rope.

MOTOR OPTIONS #1 & 2

LAYER	LINE PULL (lbs)	LINE SPEED (fpm)	
		OPTION #1	OPTION #2
1	30000	65	29
2	25300	77	35
3	21900	89	40
4	19300	101	46
5	17200	113	51
6	15600	125	56

Performance is based on 60 gpm @ 2750 psi (option #1), 25 gpm @ 2850 psi (option #2) with Ø5/8" wire rope.

MODEL 30

2 SPEED MOTOR OPTIONS #5 & 9

LAYER	LINE PULL (lbs)		LINE SPEED (fpm)	
	LOW	HIGH	LOW	HIGH
1	30000	15000	28	56
2	25300	12700	33	67
3	21900	10900	38	77
4	19300	9640	44	87
5	17200	8620	49	98
6	15600	7790	54	108

Performance is based on 24 gpm @ 2800 psi with Ø5/8" wire rope.

MOTOR OPTIONS #1 & 2

LAYER	LINE PULL (lbs)	LINE SPEED (fpm)	
		OPTION #1	OPTION #2
1	35000	52	30
2	28700	64	36
3	24400	75	42
4	21200	87	49
5	18700	98	55

Performance is based on 60 gpm @ 2500 psi (option #1), 30 gpm @ 2850 psi (option #2) with Ø3/4" wire rope.

MODEL 35

2 SPEED MOTOR OPTIONS #5 & 9

LAYER	LINE PULL (lbs)		LINE SPEED (fpm)	
	LOW	HIGH	LOW	HIGH
1	35000	17500	24	49
2	28700	14400	30	59
3	24400	12200	35	70
4	21200	10600	40	80
5	18700	9340	46	91

Performance is based on 25 gpm @ 2800 psi with Ø3/4" wire rope.

DRUM CAPACITIES - FT.

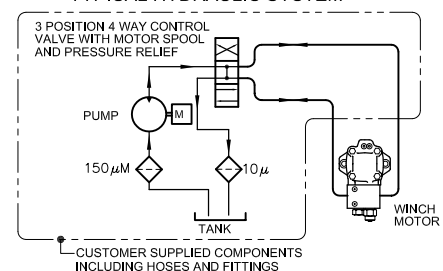
LAYER	Ø9/16" WIRE ROPE		Ø5/8" WIRE ROPE		Ø3/4" WIRE ROPE	
	A	B	A	B	A	B
1	34	41	31	38	26	32
2	74	90	67	82	58	71
3	119	145	110	133	96	116
4	170	207	158	192	139	169
5	227	276	211	257	188	229
6	289	352	271	329	-	-
7	358*	435*	-	-	-	-

Drum capacities are in accordance with SAE J706.

Actual capacities are usually up to 10% greater than those shown.

* Layer does not meet SAE J706.

TYPICAL HYDRAULIC SYSTEM



The rated line pulls are for the winch only. Consult the wire rope manufacturer for wire rope ratings.

Because of continued product improvement, we reserve the right to make changes without notice.

WARNING	CAUTION
Winches are not intended to be used for the lifting or moving of persons.	The last 5 wraps cable must be left on the drum to assist the cable clamp in holding the load.

dp Winch is a part of the Tulsa Winch Group, a worldwide provider of winch systems and electronic load information systems.

P.O. Box 1130
Jenks, OK 74037-1130
Voice: 918-298-8300
Fax: 918-298-8301
www.dpwinch.com

