

View From The Lake



Palmer Avenue, as seen from the canal

A Glamorous Back Door

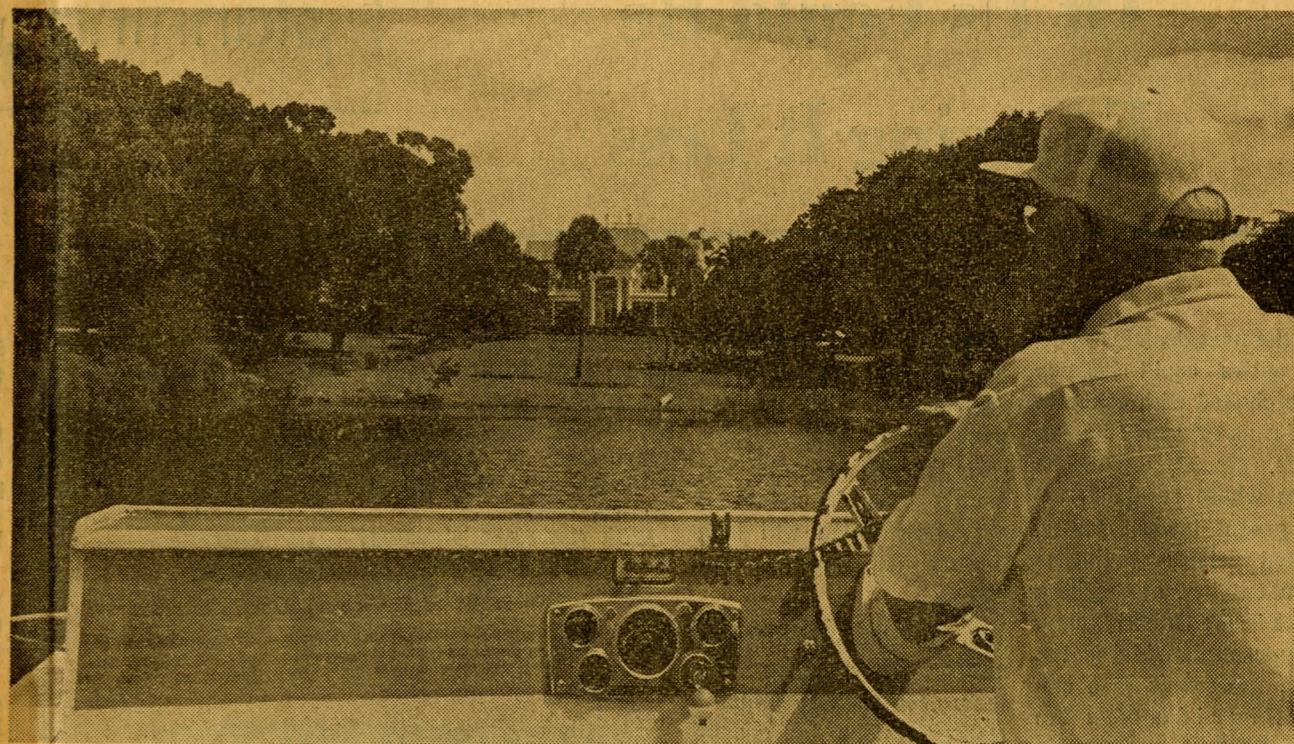
As you ride down the tree-lined streets of Winter Park, beautiful homes stick up in the sky with only chimneys and rooftops in view.

BEHIND hedges of shrubbery and ornamental walls lies another city, the city with its back to the

how many have private baths.

IT COST \$15,000 to paint one of the homes inside and out. This is a 30-room mansion known as the Brewer estate built in 1890, according to the guide.

What businesses have made the money for the owners of the Winter Park



Bill Dyer points out Winter Park mansion

Plush Canals Connect

Chain Of Lakes

street!

It is only when you are in the lakes that this phase of Winter Park can be seen. It is only here that the fronts of the mansions are open to view.

The best way to see the inside of the city is by the Scenic Boat Tour which leaves every half hour from the foot of Morse Boulevard, not only because the estates are unobstructed but because the tour director has a wealth of knowledge about the owners and their properties.

He tells you how many children people have and what they paid for their lots. He gives the number of bedrooms in a house and

homes is another of the bits of information dispensed by Bill Dyer, captain of one of the two open boats which seat 25 people.

Gasoline Alley was created by the late cartoonist Frank King and the weathervane on his home shows the fictional family of Walt Wallet and his dog.

Rollins College has a new perspective from the waterside.

Students bask in the sunshine on the docks.

Vistas of semi-tropical foliage are everywhere, the narrow canals connecting the chain of lakes have hanging vines, banana plants, palm trees, azaleas and camellias to make a panorama of beauty.

Story

By

Virginia

Loog

Photos

By

Greg

Carpenter

