

# Dinky Dock Not Only Access To Winter Park Lakes

By NICK WHITE  
Staff Writer

One of the most frequent of the few complaints raised by Winter Park residents about life in their city is that the lakes here are almost "private," because of the limited access to them for the public.

While it is true that most of the 15-20 miles of shoreline surrounding Winter

Park's lakes is privately owned, it is not true — as many believe — that Dinky Dock is the only public land from which a citizen may reach the water to swim or fish.

Although some of the accesses running between the private homes and estates are small, they are wide enough to provide persons — not large groups — access to fish from the

water's edge or even enter the lake for swimming. Fishing and swimming are not prohibited in any of the Winter Park lakes.

SOME CITY officials admit that the public has never been "encouraged" to make use of the local lakes, except at Dinky Dock, because this might "ruin" the lakes. It is believed by some that the

lakefront property owners — who generally pay the highest residential taxes in the city — deserve to enjoy the lakes in their relatively private state.

This feeling, which may well be shared by the majority of local residents, has existed for many years. Over the years, some of the public property leading to the lakes, such as "street ends" have actually been

made to appear as private property. Reports have been heard of adjacent property owners "running off" persons who attempted to make use of the public land.

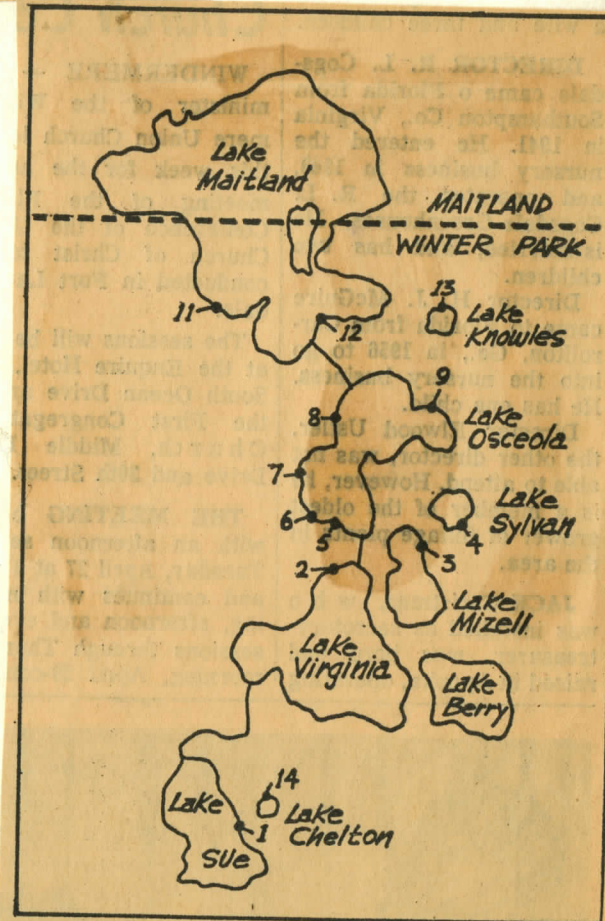
A few of the lakefront areas have been "forgotten" so long by the city that officials can not — without going through an extensive title search — tell the Winter Park Star

whether the land is public or not. One such area is a tract at the end of Laurel Road on Lake Virginia. Various city officials described this tract as public and private.

**THE CONTROVERSIAL** case of the College Point park, which recently flared up again and is slated to be taken to court for settlement, serves to illustrate the uncertainty of some of the areas. This particular park is definitely a private park, owned by the property owners of Virginia Heights Subdivision, the city has stated on numerous occasions.

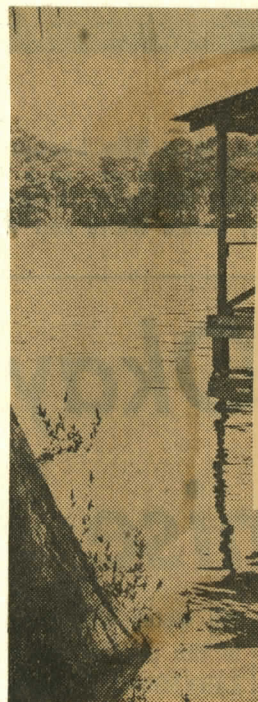
With the proposed widening of the canals between the lakes to 30 feet, some residents have already publicly voiced fears of people wildly water skiing through the canals while drinking beer.

The paving of boat launching ramps at some of the street-ends, as some have suggested, might lead to such conditions, officials fear. There is only a limited amount of parking in the vicinity of most of the street accesses anyhow, it has been pointed out.



## Public Property On Lakes

The spots marked on this map of Winter Park lakes have been identified by the city as public property. The areas are: (1) Reading Way, street end; (2) Dinky Dock, has supervised beach, play equipment, boat ramp, barbecue pits; (3) Mizel Avenue, street end; (4) small area designated on official city map as "park," located at Roundelay Lane and Harris Circle; (5) Chase Avenue, street end; (6) Alexander Place, street end; (7) Canton Webster Avenue, street end; (8) small strip with access from Elizabeth Drive and Palmer Avenue; (9) small area off Alberta Drive; (10) New York Avenue, street end; (11) Kraft Gardens, has covered fishing dock; (12) entire shoreline of Lake Knowles is public; (13) entire shoreline of Lake Chelton is public.



COVERED FISHING DOCK  
... At Lake Maitland