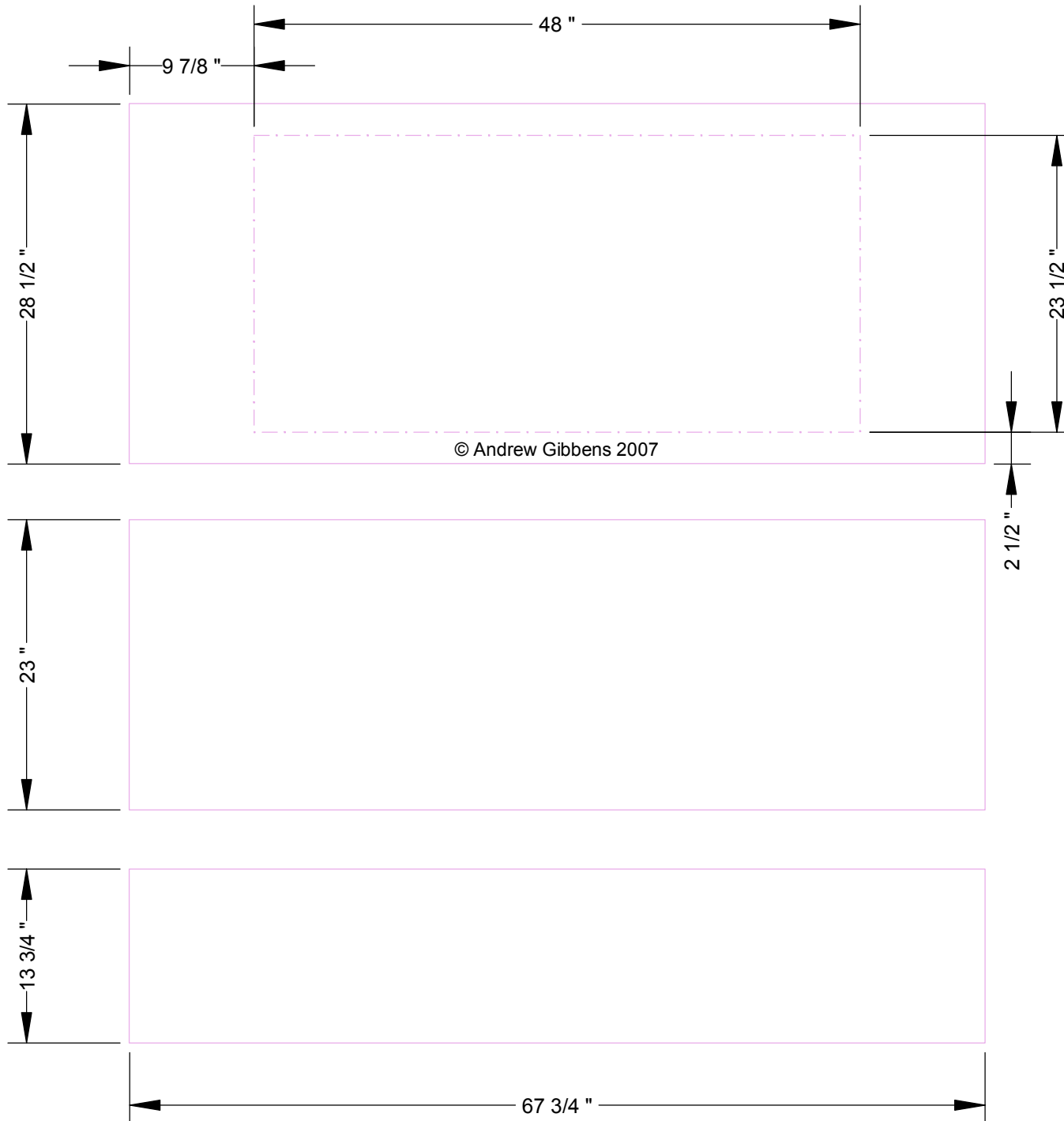


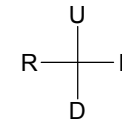
NOTE: Front panels shown without outer skin - outer skin is fitted after body assembly.

FRONT 1

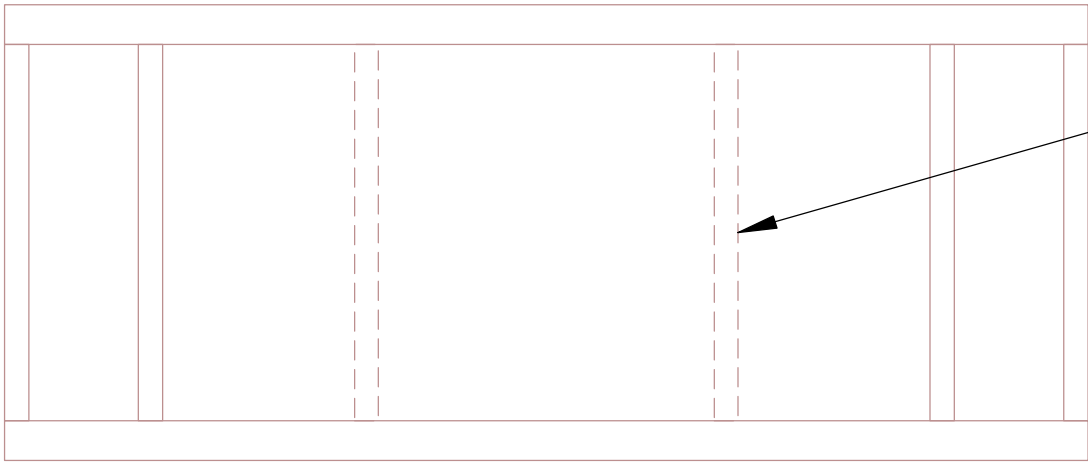


NOTES:

1. All front panel skins 1/8" exterior plywood.
2. All three front panels first cut out and assembled as square-edge panels consisting of inner skin and framing (as shown on this sheet). Then top and bottom edges cut and bevelled (see last sheet).
3. Optional home-made fixed window in upper front panel.



FRONT 2
1:12



Vertical framing as other panels if window not fitted.

NOTES:

- 1. Vertical framing 1" x 2" (nominal).
- 2. Horizontal framing 1" x 3".

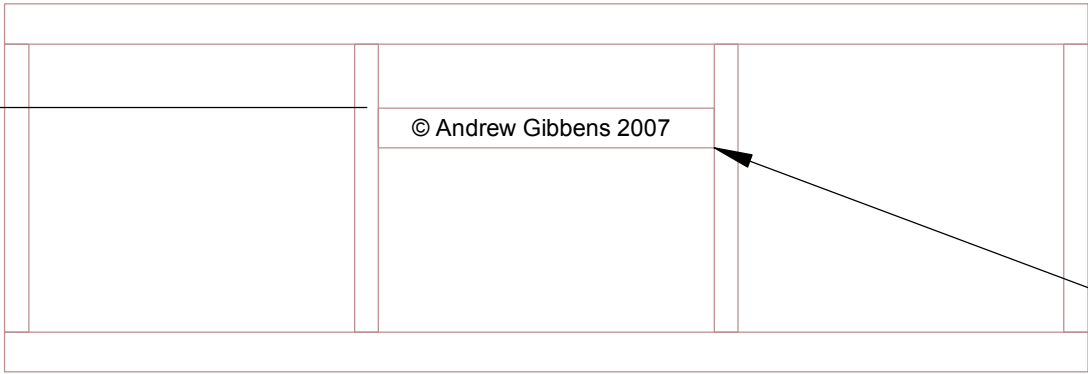
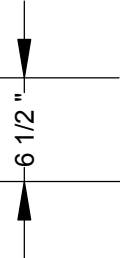
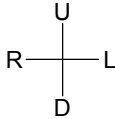
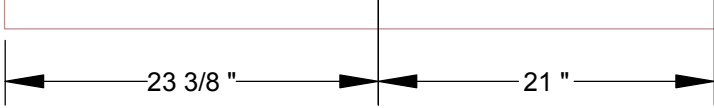
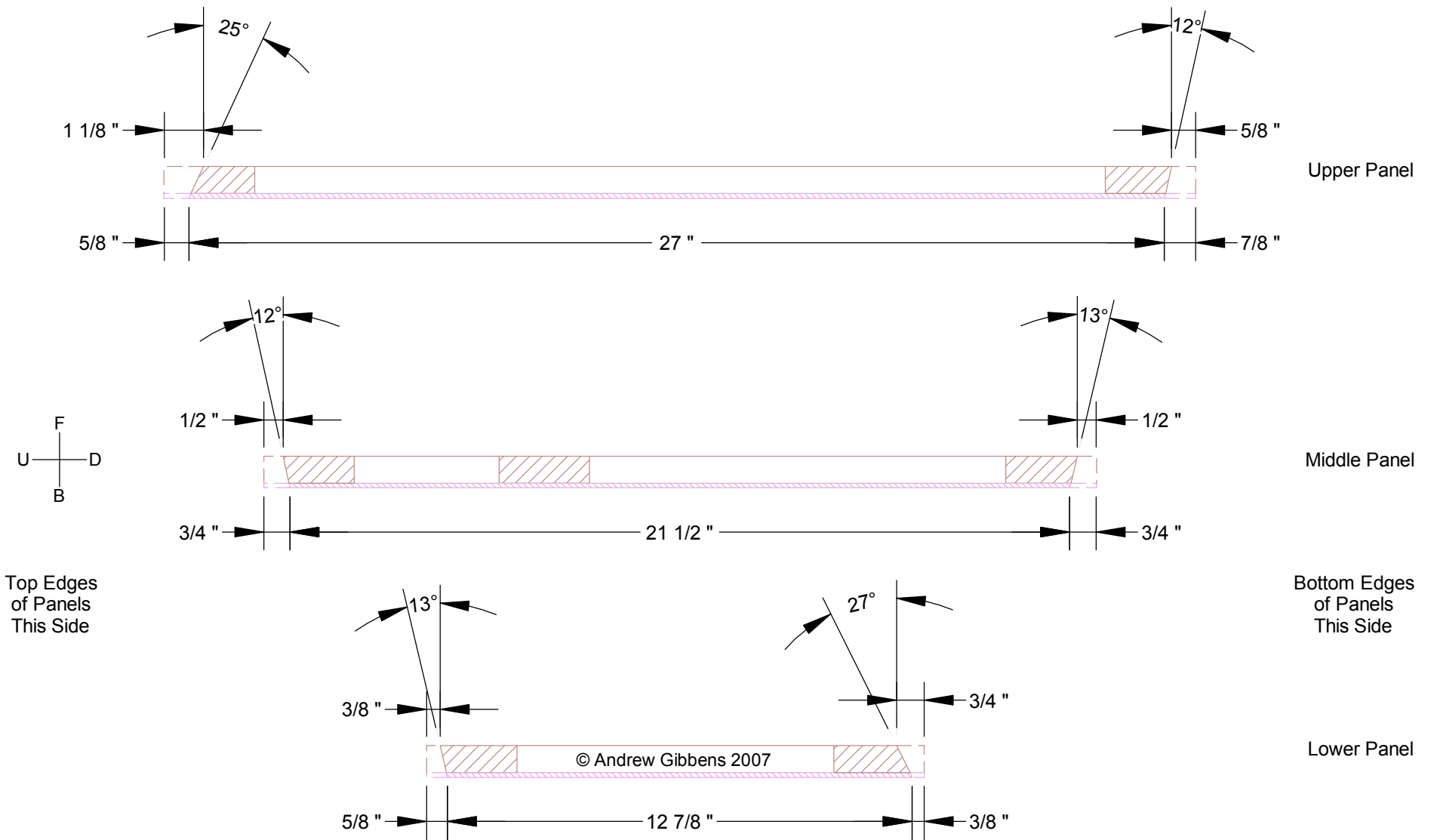


Table support





NOTES:

1. All three panels drawn with inner skin facing down.
2. Cumulative panel heights may not equal dimensions on previous sheet due to rounding errors.