



**OTG11351AG**

## **ZIM | GREY HIGH BACK WEIGHT SENSING SYNCHRO-TILTER**

The Zim chair boasts a timeless design with functional features. Its unique wraparound mesh back beautifully sculpts the chair and provides comfort and breathability. Zim's weight sensing mechanism regulates the chair tilt tension according to the user's weight, making it ideal for shared spaces such as touchdown stations or meeting room environments.

- Synchro-tilt mechanism
- Wraparound mesh back design
- Black polyester seat with a Grey mesh back
- Height adjustable T-arms with soft urethane armcaps
- Multi position tilt-lock and weight sensing tension

- Seat depth adjustment
- Pneumatic seat height adjustment
- optional adjustable mesh headrest is available - [OTG11352](#)
- model with Black mesh back available - [OTG11351AB](#)

#### Upholstery Options:

Back	Mesh - Grey
Seat	Black polyester



## Specifications

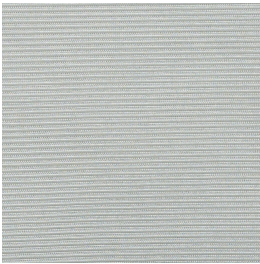
Dimensions: 26"W x 24.5"D x 43"H

Seat Height: 18" - 22.5"

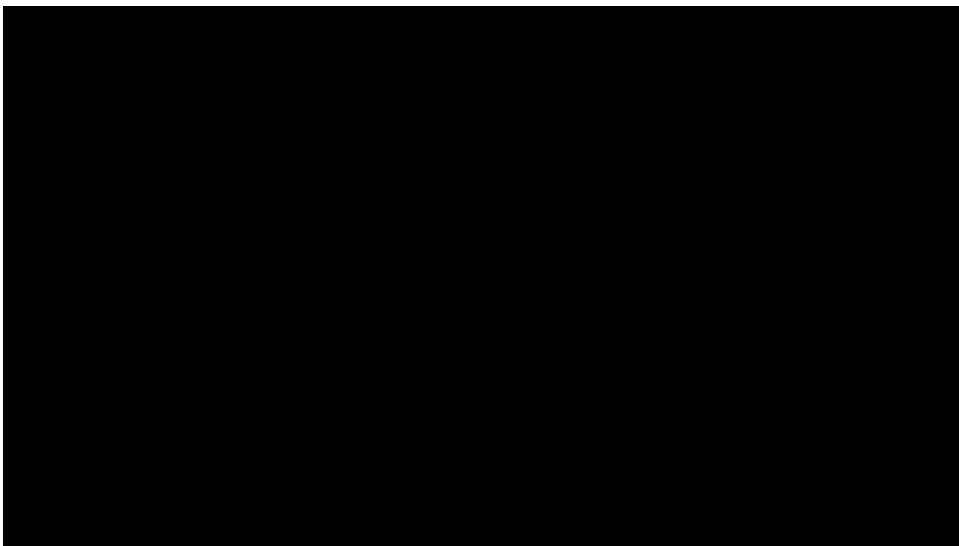
Weight: 37.5 lbs / 17.0 kg

Volume: 5.75 ft<sup>3</sup> / 0.16 m<sup>3</sup>

## Mesh Back



Grey



Showcase | 1:01

**Zim**

## Ergonomics





Chair Tilt Lock



Seat Height



Seat Depth



Arm Height



Synchro-Tilt  
Movement



Waterfall Seat Edge



Contoured Cushions