

SOLIS KINETIC BACK



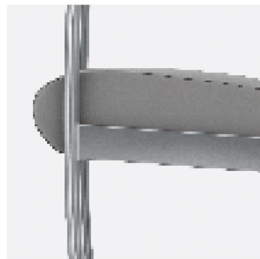
**krug**

HEALTHCARE SOLUTIONS



#### KINETIC BACK OPTION

This optional feature provides the chair back with a very pleasant and comfortable rocking motion, which can significantly enhance long-term sitting for patients and guests alike. The durable spring-loaded mechanism provides a range of motion of 20 degrees, and can be field-installed or replaced. It's available on any Solis chair back - Guest, Patient and Multiple Seating - with the exception of the Bariatric sizes (30" and 44").



#### STEEL SEAT FRAME

The structural seat frame is made from welded steel with a powder-coated finish that allows Solis to well exceed ANSI/BIFMA standards. This seat structure also allows damaged arm and leg frame components to be replaced without replacing the entire frame or unit, while allowing the back to have a slight flexing action.



#### CLEAN OUT

All Solis seating models have a built-in clean out feature: a space at the back of the seat that allows dirt, liquid and debris to fall to the floor for easy clean up and maintenance - designed so that it does not detract from the comfort or appearance of the product.



#### REMOVABLE SEAT & BACK COVERS

This option enables upholstery covers to be removed for cleaning and repair, or replacement. Complete seats and backs can be replaced. Mesh backs can be removed (on their frame) for cleaning, or replacement.



#### REPLACEABLE COMPONENTS

Solis is engineered for long life, with the unique ability to field replace all of the components individually, if they become damaged or degraded. This includes seats, backs, arms, side frames, upholstery covers, and the Solis under-seat Splashguard.



The mark of responsible forestry



All products are air emissions certified and are available as FSC® certified

# krug

solutions@krug.ca | www.krug.ca | 1.888.578.KRUG