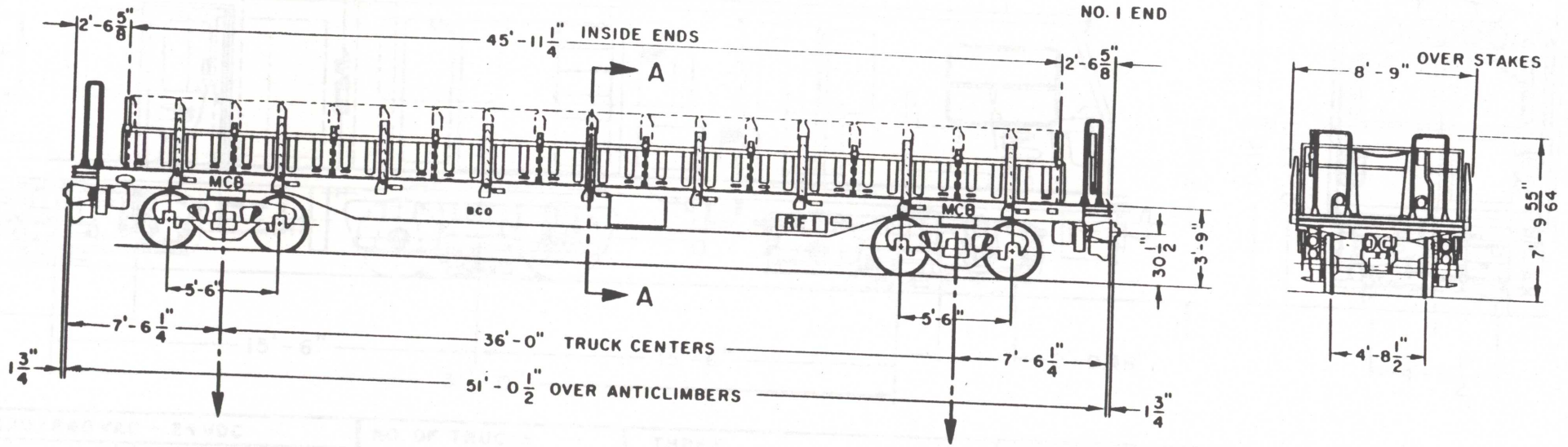


Section A-A

TRAILER FLAT CAR, REFUSE COLLECTOR RFI-RF27
 DATE: 1956 BUILDER: FUJI HEAVY

R58

CARBODY CLEARS ON ALL DIVISIONS



EQUIPMENT		TRUCKS		MISC.	
TYPE OF BRAKES	FRICTION	TRUCK TYPE	AAR	CAPACITY	36,000 LBS.
BRAKE EQUIPMENT	WABCO E-2 OPERATING UNIT	TRUCK MANUFACTURER	SUMITOMO IND.	REFUSE CONTAINER CAPACITY	38 (9 RAMP SPACES)
HAND BRAKE	PEACOCK BRAKE	TRUCK NUMBERS			
COUPLERS	H-2-C BOTH ENDS	WEIGHT OF TRUCK	8,050 LBS. EACH		
		BRAKES	INSIDE HUNG SINGLE SHOE		
		JOURNAL BEARINGS	TIMKEN AP BEARINGS		
		TRIP COCKS	WABCO (4)		

NEW YORK CITY TRANSIT AUTHORITY
 CAR EQUIPMENT DEPARTMENT

Goetz DWN *P. Europe* APP'D

402-2001

SHEET 242