

APRIL CANCER AWARENESS MONTH

TESTICULAR CANCER

Testicular cancer occurs in the testicles (testes), which are located inside the scrotum, a loose bag of skin underneath the penis. The testicles produce male sex hormones and sperm for reproduction.



The American Cancer Society estimates for testicular cancer in the United States for 2017 are:

- About 8,850 new cases of testicular cancer diagnosed
- About 410 deaths from testicular cancer

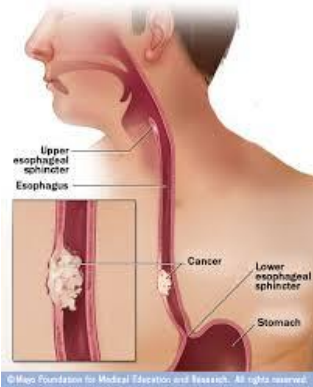
Testicular cancer is not common; about 1 in every 263 males will develop testicular cancer at some point during their lifetime. The average age at the time of diagnosis of testicular cancer is about 33. This is largely a disease of young and middle-aged men, but about 7% of cases occur in children and teens, and about 7% occur in men over the age of 55.

ESOPHAGEAL CANCER

Early esophageal cancer typically causes no signs or symptoms

Signs and symptoms of esophageal cancer include:

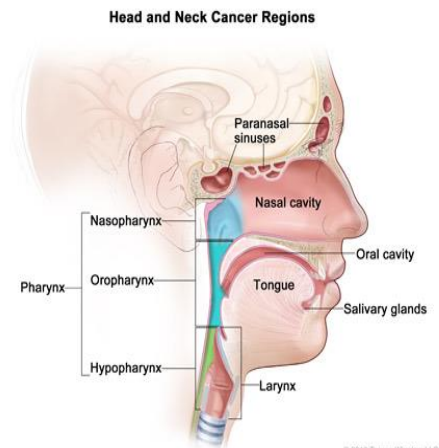
- ✓ Difficulty swallowing (dysphagia)
- ✓ Weight loss without trying
- ✓ Chest pain, pressure or burning
- ✓ Worsening indigestion or heartburn
- ✓ Coughing or hoarseness



HEAD AND NECK CANCER

The term "head and neck cancer" refers to a variety of tumors that can occur in the throat, larynx (voice box), nose, sinuses and mouth.

Most **head and neck cancers** are called squamous cell carcinomas, because they begin on the surface layer of the region within the head or neck, where the cells are flat and squamous. Cancer confined to this layer of cells is called carcinoma in situ. When the malignant cells spread into deeper layers of cells, it is called invasive squamous cell carcinoma.



© 2013 Thomson Windward LLC. U.S. Stock has certain rights.