

TRENDS

IN CRITICAL CARE NURSING™ 2016

September 27–30
Radisson Hotel Valley Forge
King of Prussia, PA



Jointly Provided by

Virtua



Dear Nurse Colleague,

Join us for TRENDS in Critical Care Nursing where you will meet nurses from around the country who share your expertise and commitment. You will hear from expert national and local speakers who will provide you with the most current information in caring for patients experiencing life threatening illnesses. This conference is being jointly provided by the Southeastern Pennsylvania (SePA) Chapter of the American Association of Critical-Care Nurses (AACN) and Virtua. Features of this program include:

- **68 sessions** featuring four specialty tracks in Trauma/Stroke, Cardiology, Advanced Practice / Pharmacology, and Leadership
- **Mastery Session** on Monday, September 26th **"Management of Active Shooter Events in the Critical Care Environment"**
- Tricia Nichols, MSN, RN, CCRN and SePA President-Elect will captivate you in the opening Tuesday Plenary Session **"The Power of a Tap: Stories of Empowerment"**
- Our second annual **"SePA Star Search"** will highlight novice nurse speakers during the Tuesday Lunchtime Session
- **AACN President**, Clareen Wiencek, PhD, RN, ACNP, ACHPN will enlighten us during the Wednesday Plenary Session, **"It Matters"**
- **A Town Hall Meeting** with AACN President Clareen Wiencek, PhD, RN, ACNP, ACHPN and SePA President Deborah Paschal, BSN, MSN, CRNP
- Enjoy the Wednesday Dinner Program, a fun presentation and an evening of networking featuring Deb Gauldin, RN presenting **"It Only Hurts When We Don't Laugh! The Power of Humor"**
- Thursday Plenary Session by Mary Bylone, MSN, RN, CNML, **"Discover the Leader Within You"**
- Friday Plenary Session by Kathy McCauley, PhD, RN, FAAN, FAHA, **"Healthy Work Environment"**
- More national and local speakers including Donna Barto, DNP, RN, CCRN, Cindy Blank-Reid, MSN, RN, CEN, Barbara Chamberlain, PhD, APRN, MBA, Eleanor Fitzpatrick, MSN, RN, ACNP-BC, AGCNS-BC, CCRN, JoAnne Phillips, DNP, RN, CPPS, Anne Marie Palatnik, MSN, RN, ACNS-BC and Rose Shaffer MSN, RN, ACNP-BC, CCRN

Mark your calendar and plan now to attend TRENDS in Critical Care Nursing at the Radisson Hotel Valley Forge located just 30 minutes northwest of downtown Philadelphia. Find out more online at <https://aacnsepa.nursingnetwork.com/>. We look forward to seeing you.

Sincerely,

Deborah Paschal, BSN, MSN, CRNP
President, SePA Chapter of AACN

Samantha Delaney, BSN, RN, CCRN, NE-BC
Chair, Education Committee, SePA Chapter of AACN

Vicki Brzoza, RN, MSN, MBA, CCRN
Chair Elect, Education Committee, SePA Chapter of AACN

Eileen S. Morris
Project Manager

Exciting, new technology coming to TRENDS 2016!

Remember how awkward program books can be? Although program books have slimmed down over the years, they still can be a nuisance to carry around all week while attending conference sessions.

Well, you won't have to worry about that at this year's TRENDS: we are making efforts to go **GREEN** and will have our own Android/Apple Application for your phone, tablet, or other smart device. Participants can download the app a month before the conference to become acquainted with its features which include:

- Dashboards – includes “in-app tutorials” to aid in navigation; “What’s on now” and a quick access bar.
- Schedule of sessions – browse the schedule of sessions by date, time, category, or type, and track prior to the conference. You will also be able to view the speakers’ bios and pictures.
- My schedule – allows personalization and customization of schedules. Reminders will be sent to inform you of your next scheduled session.
- Exhibitors – browse and bookmark the list of exhibitors prior to your arrival, and mark them as “visited” to keep track.
- Maps – based on last year’s feedback, we know that the conference was too spread out, so this year the entire conference will be held in the Radisson Hotel conference center. The map feature includes conference center layout, map navigation, and ability to add a pin note reminder.
- Social features – Twitter, Instagram, Facebook, and LinkedIn will all be integrated. There is also a photo gallery to capture and share your photos and experiences. Do you typically meet colleagues from around the country at TRENDS? This feature will help you to network in advance allowing you to share status, contact information, personal schedules, and direct messages.
- Powerpoints and outlines can be printed prior to conference, if desired. During the conference, you will have the ability to take notes on the app and save for later.

We hope you are as excited as we are in this move to make TRENDS a more tech-savvy conference!



Featured Speakers	4
Learning Objectives.....	5
Conference Highlights	6 / 7
Tuesday Schedule.....	8
Wednesday Schedule.....	9
Thursday Schedule.....	10
Friday Schedule.....	11
Hotel and Area Information	12
Travel Information.....	13
General Information.....	13
Faculty	14
Registration Information	15

TABLE OF CONTENTS

FEATURED SPEAKERS

Clareen Wiencek, RN, PhD, ACNP, ACHPH, AACN President



As associate professor of nursing at the University of Virginia (UVA) School of Nursing and coordinator of the ACNP program, Clareen has almost 40 years of experience in

critical care as a bedside nurse, nurse manager, educator, and researcher. She was the nurse manager for the acute care-based palliative care unit and program director for the Center for Integrative Pain Management at Virginia Commonwealth University Health System in Richmond, Virginia for four years before joining the faculty at UVA.

A reviewer for Journal of Critical Care and an End-of-Life Nursing Education Consortium National faculty member, Clareen also belongs to the Midwest Nursing Research Society, Society of Critical Care Medicine, Hospice and Palliative Nurses Association, and Sigma Theta Tau International Honor Society of Nursing.

Mary Bylone, MSM, RN, CNML



As president of Leaders Within, Mary provides education, coaching, and consulting services to help develop authentic leaders and create healthy work environments. She

recently held the position of Regional Vice President, Patient Care Services, East Region for Hartford Healthcare in Connecticut. Her career spans a variety of nursing leadership positions, including chief nursing officer, assistant chief of clinical operations, administrative and clinical nursing director, critical care services manager and nurse manager.

Mary frequently lectures and writes about AACN's Healthy Work Environment standards. She is a contributing author to AACN's Essentials of Nurse Manager Orientation E-learning. She holds a Master of Science degree in management, a post-graduate certificate in human resource management, and CCRN alumnus status. Mary is a former member of AACN's Board of Directors and a Certified Nurse Manager and Leader.

Kathy McCauley, PhD, RN, FAAN, FAHA



Kathy is a Professor of Cardiovascular Nursing at the University of Pennsylvania School of Nursing and a Clinical Nurse Specialist at the Hospital of the University of PA. She

earned a diploma in Nursing from St. Joseph Hospital School of Nursing in Reading, PA and a BSN, MSN, and PhD, as well as a post-master's certificate as an acute care NP from the University of Pennsylvania School of Nursing. She is a past president of AACN and was president when AACN launched the Healthy Work Environment Standards. She is a Fellow in both in the American Academy of Nursing and the Council on Cardiovascular Nursing of the American Heart Association.

Tricia Nichols, MSN, RN, CCRN



Tricia is the Director of Nursing Education overseeing all three Philadelphia and Bucks County Hospitals for Aria Health. Tricia has been a critical care nurse for 18 years and has held different positions during her

tenure. Her experiences include bedside nursing, critical care nurse educator, and clinical nurse specialist. Tricia is driven by lifelong learning and professional development and is known for her 'love what you do and you won't work a day in your life' mentality. She is innovative in her teaching style where FUN is imperative to engage staff to want to learn. Tricia is a true patient advocate and is passionate about the patient experience. She loves to empower staff to ultimately realize that everyone can make a difference! You just need to believe in yourself and have the passion!

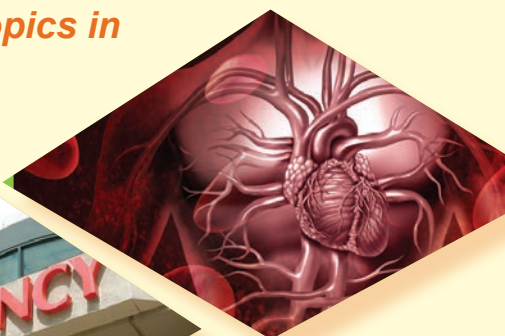
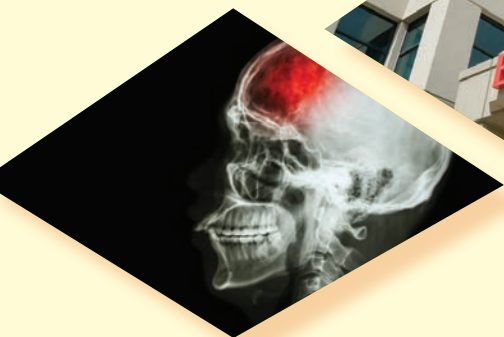
TRENDS LEARNING OBJECTIVES

- Validate and expand knowledge on current practice standards.
- Examine the impact of issues and trends on care delivery and practice.
- Refine clinical judgment and critical thinking skills through case analysis of issues in patient care and healthcare delivery.
- Develop a professional network of colleagues and associates from practice and industry.
- Explore ways to influence workplace health, ensuring healthcare systems driven by patients' needs, where nurses make optimal contribution.
- Stimulate inquiry into the fields of trauma, stroke, cardiovascular, pharmacology, and leadership.



68

Sessions featuring timely topics in
Trauma / Stroke
Cardiology
Pharmacology
Leadership



FOR MORE INFORMATION

<http://aacnsepa.nursingnetwork.com>

CONFERENCE HIGHLIGHTS

TRAUMA/STROKE TRACK

Tuesday, September 27

These tracks are intended for nurses who are required to obtain continuing nursing education (CNE) in the areas of trauma and stroke. Separate trauma and stroke contact hours will be shown on the certificate of provided contact hours for those who attend these sessions.

SePA STAR SEARCH

Tuesday, September 27 from 12:30 to 1:00 pm

Selected participants of this unique program will have just 10 minutes to present on a topic of their choice to a panel of judges comprised of SePA Chapter leaders. Immediately following the last presenter, rubrics will be tallied and the speaker with the top score will be declared the winner and receive:

- A guaranteed concurrent session lecture for TRENDS 2017
- Complimentary registration and lunch for their lecture day during TRENDS 2017
- One-on-one mentoring from a SePA leader who is experienced in professional speaking to prepare them for their debut next year
- Mentoring from an advanced nurse educator to prepare them for their debut next year

EXHIBIT HALL OPENING RECEPTION

Tuesday, September 27 from 4:30 to 6:00 pm

Catch up on leading industry trends and innovations. Learn about all the great new products, services, and opportunities our exhibitors have to offer. Because of your knowledge of hospital products and services, you can help evaluate what our exhibitors have to offer your hospital. Nurses can easily provide information about the benefits and disadvantages of using certain products, and determine whether or not a product is convenient to use. In addition, this is an excellent opportunity to step forward, speak up, and share your thoughts and ideas with the company representatives about things that would benefit your nursing practice in the future. Let's work together as we navigate these changing and challenging times in healthcare! You can make a difference!

CARDIAC TRACK

Wednesday, September 28

This new track concentrates heavily on cardiac related topics for progressive care nurses and critical care nurses.

- 12-Lead ECG and Axis Analysis
- Myocardial Ischemia, Injury & Infarction
- Bundle Branch Blocks and Hypertrophy
- Wide Complex Tachycardia
- Pacemakers, Defibrillators, and More

TOWN HALL MEETING WITH AACN AND SePA PRESIDENTS

Wednesday, September 28 from 12:30 to 1:30 pm

Join us for an engaging open forum discussion with your nursing leaders! AACN President, Clareen Wiencek, PhD, RN, ACNP, ACHPN and SePA Chapter President, Deborah Paschal, BSN, MSN, CRNP will address key issues facing today's progressive and critical care nurses. They will also provide solutions for how AACN and the SePA Chapter are working together to respond to these issues at the national and local level. They want to hear from you, so bring your questions and concerns and be a part of the conversation. No contact hours awarded, but light refreshments will be provided.

DINNER PROGRAM

Wednesday, September 28 from 5:00 to 7:00 pm



Deb Gauldin, RN is known as the World's Funniest Singing Nurse. Except for the year she planned to be the reigning Miss America, Deb always wanted to be a nurse. She spent the first 20 years of her career as an obstetric nurse

delivering babies, and for the past 20 years she has been "delivering" humorous keynotes for overextended and under appreciated nurses around the globe. A recording artist, author, and cartoonist, Deb is also an avid student of the neuroscience of laughter and positive emotions. You and your friends will not want to miss this FUN program! Purchase your tickets ahead of time with your conference registration or on-site if seats are still available.

ADVANCED PRACTICE / PHARMACOLOGY TRACK

Thursday, September 29

This track is designed for all advanced practice nurses who prescribe medications and require those much needed pharm hours! It is also an excellent source for front-line nurses with the desire to learn more about the medications they administer every day. Separate Pharmacology hours will be shown on the certificate of achievement for those who attend these sessions.

LEADERSHIP TRACK

Friday, September 30

This is a new track being offered this year and we hope you are as excited about it as we are! Designed specifically for current or aspiring nurse leaders, such as Chairs of Shared Governance Committees and other unit based or hospital-wide committees. Come and learn how to further develop your

CONFERENCE HIGHLIGHTS

team building and leadership skills. You can also attend a session to learn more about all the personal and professional benefits to be gained from becoming more engaged in your local AACN Chapter. In keeping with the AACN theme of the year – "It Matters!"

Adult CCRN-PCCN Certification Review

Tuesday, September 27 – Thursday, September 29

These combined Adult CCRN and PCCN review sessions help prepare progressive and critical care nurses to successfully pass the CCRN and PCCN examinations.

Testing will not be available on site at TRENDS; however, participants who attend the certification review sessions are strongly encouraged to take the appropriate certification exam as soon after the conference as possible. We will be following up with you on your exam results.

The **CCRN Certification (Adult)** is appropriate for registered nurses who possess a distinct and clearly defined body of knowledge called acute/critical care nursing. The CCRN exams are 3-hour tests consisting of 150 multiple-choice items. Of the 150 items, 125 are scored and 25 are used to gather statistical data on item performance for future exams (AACN, 2016).

The **PCCN Certification** is appropriate for registered nurses practicing in progressive care settings providing care to acutely ill patients. The exam is a 2.5-hour test consisting of 125 multiple-choice items. Of the 125 items, 100 are scored and 25 are used to gather statistical data on item performance for future exams AACN (2016). PCCN Exam Handbook (adult).

GENERAL INFORMATION

Continuing Education Statement:

TRENDS in Critical Care Nursing 2016 is being jointly provided by the Southeastern Pennsylvania Chapter of the American Association of Critical-Care Nurses and Virtua.

Course Completion Criteria: Participants must attend entire individual sessions, no partial credit will be awarded, and completion of on-line end of program evaluation to be completed by December 1, 2016.

ACCREDITATION:

This program has been awarded 33.25 Nursing Contact Hours. Virtua is an approved provider of continuing nursing education by New Jersey State Nurses Association, an accredited approver by the American Nurses Credentialing Center's Commission on Accreditation Provider Number P177-1/16-19

What is a CERP?

A continuing education recognition point (CERP) equals 60 minutes of continuing education. Some sponsored sessions award CERPs instead of traditional continuing education (CE) credit. Many state board of nursing and other certification organizations recognize CERPs as meeting continuing education requirements. AACN recommends consulting with the state board or credentialing organization before submitting CERPs to fulfill continuing education requirements. AACN accepts CERPS for renewal of all AACN certifications.

CE/CERP Credit:

Hours of continuing education credit, calculated on a 60-minute contact hour, are determined by the numbers of sessions a participant attends. Credits listed in contact hours.

Monday Evening Mastery Session	2.0
Sunrise Sessions.....	1.25
Plenary Sessions.....	1.25
Concurrent Sessions	1.25
Tuesday Lunchtime Session	1.0
Wednesday Dinner Program	2.0
Maximum Possible CERPS	1.0
Maximum Possible Conference Contact Hours.....	33.25

DISCLOSURE:

It is the policy of Virtua to ensure balance, independence, objectivity, and scientific rigor in all its sponsored educational programs. All faculty participating in sponsored programs by Virtua are expected to disclose to the program audience any associated or apparent conflict(s) of interest related to the content of their presentation(s). Accredited status does not imply endorsement by Virtua, New Jersey State Nurses Association, or American Nurses Credentialing Center's Commission on Accreditation of any commercial products used for demonstration purposes.



CONFERENCE SCHEDULE

MONDAY, SEPTEMBER 26

6:00 – 8:00 pm *Mastery Session*

- Management of Active Shooter Events in the Critical Care Environment - *David Adler*

TUESDAY, SEPTEMBER 27

Trauma / Stroke

7:00 – 7:50 am *Registration and Morning Coffee*

7:50 – 8:00 am *Greetings*

8:00 – 9:15 am *Plenary Session*

The Power of a Tap: Stories of Empowerment - *Tricia Nichols*

9:15 – 9:30 am *Session Change*

9:30 – 10:45 am *Concurrent Sessions*

- **Clinical:** Ms. Mosquito: Her Dysfunctional Relationship with People and the Threat she Poses - *A.E. Mica*
 - **Stroke:** Cryptogenic Stroke - *Donna Siegemeister*
 - **Trauma:** Care of the Polytrauma Patient with a Spinal Cord Injury - *Eleanor Fitzpatrick*
 - **CCRN-PCCN Certification Review:** Professional Caring and Ethical Practices (Synergy) and Test Taking Strategies - *Katie Detrick*
- ### 10:45 – 11:00 am *Session Change*
- ### 11:00 – 12:15 pm *Concurrent Sessions*
- **Trauma:** From George to Barack: Learning Trauma from Presidential Injuries - *Cynthia Blank-Reid*
 - **Stroke:** Gender Differences in Stroke: Epidemiology, Risk Assessment and Prevention Strategies - *Carey Heck*
 - **Trauma:** Unexpected Survivors of Trauma - *Eleanor Fitzpatrick*
 - **CCRN-PCCN Certification Review:** Cardiovascular Part I - *Katie Detrick*

12:15 – 12:30 pm *Session Change / Lunch*

12:30 – 1:30 pm *Lunchtime Session* SePA Star Search

1:30 – 1:45 pm *Session Change*

1:45 – 3:00 pm *Concurrent Sessions*

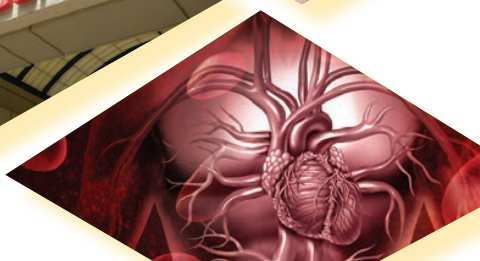
- **Respiratory:** Extracorporeal Membrane Oxygenation: ECMO for the Non-ECMO Nurse - *Ashley Trinsey*
- **Trauma:** Management of Complications in Acute Spinal Cord Injury - *Carey Heck*
- **Stroke:** Intracerebral Hemorrhage: Guide lines and Updates - *Wendi Rank*
- **CCRN-PCCN Certification Review:** Cardiovascular Part II - *Terri Campana*

3:00 – 3:15 pm *Session Change*

3:15 – 4:30 pm *Concurrent Sessions*

- **Cardiovascular:** Code Blue: Debriefing the 2015 Guidelines - *Donna Barto and Leslie Foran-Lee*
- **Trauma:** Penetrating Pediatric Trauma Cases - *Cynthia Blank-Reid*
- **Stroke:** Stroke and tPA: A Closer Look - *Wendi Rank*
- **CCRN-PCCN Certification Review:** Cardiovascular Part III - *Terry Campana*

4:30 – 6:00 pm *Exhibit Hall Open and Opening Reception*



CONFERENCE SCHEDULE

WEDNESDAY, SEPTEMBER 28

Cardiac

6:30 – 7:45 am Sunrise Session
Alarm Fatigue: A Complex Issue Requiring an Interdisciplinary Solution - *Joanne Phillips*

7:00 – 7:50 am Registration and Morning Coffee

7:50 – 8:00 am Greetings

8:00 – 9:15 am Plenary Session
AACN President's Theme - "It Matters"
Clareen Wiencek

9:15 – 9:30 am Session Change

9:30 – 10:45 am Concurrent Sessions

- **Cardiac:** 12-Lead ECG: Introduction and Axis - *Rose Shaffer*
- **Clinical:** Interesting Co-Morbidities: Caring for Patients who Have an Autoimmune Disease – *Cynthia Blank-Reid*
- **Clinical:** State of the Relationship: Palliative Care and Critical Care in this Decade – *Clareen Wiencek*
- **CCRN-PCCN Certification Review:** Pulmonary Part I - *Tania McAlorum-Hoyer*

10:45 – 11:00 am Session Change

10:45 – 5:00 pm Exhibit Hall Open

11:00 – 12:15 pm Concurrent Sessions

- **Cardiac:** 12-Lead ECG: Myocardial Ischemia, Injury, and Infarction - *Rose Shaffer*
- **Clinical:** Hidden Illnesses at the White House: The Secret Health of our Presidents and First Ladies - *Cynthia Blank-Reid*
- **Clinical:** Patient Safety: It Takes a Village... But it Starts with You - *Joanne Phillips*
- **CCRN-PCCN Certification Review:** Pulmonary Part II - *Tania McAlorum-Hoyer*

12:15 – 12:30 pm Session Change / Lunch

12:30 – 1:30 pm Lunchtime Session
Town Hall Meeting with AACN and SePA Presidents. Optional/No Credit.

1:30 – 1:45 pm Session Change

1:45 – 3:00 pm Concurrent Sessions

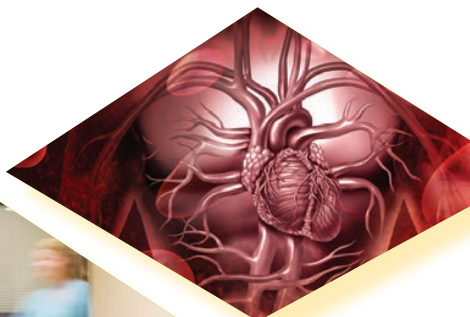
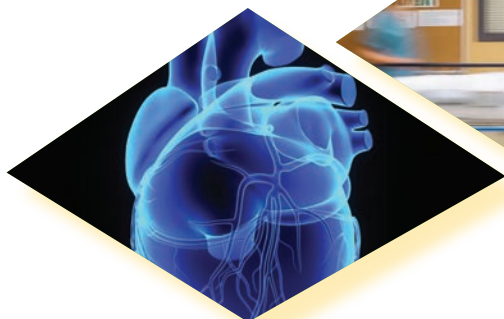
- **Cardiac:** 12-Lead ECG: Bundle Branch Block and Hypertrophy - *Rose Shaffer*
- **Cardiac:** Thoracic Aortic Surgery from A to Z - *Mary Frances Quinn*
- **Clinical:** I Like to Move It: Progressive Mobility in a Critical Care Setting - *Lauren Burk*
- **CCRN-PCCN Certification Review:** Gastrointestinal - *Donna Barto*

3:00 – 3:15 pm Session Change

3:15 – 4:30 pm Concurrent Sessions

- **Cardiac:** Every Beat of My Heart: Pacemakers, Defibrillators, and More - *Desiree M. Soto*
- **Cardiac:** Minimally Invasive Mitral Valve Surgery - *Mary Frances Quinn*
- **Cardiac:** "Lead" the Way to Practice Standards in Cardiac Monitoring - *Cyndi DiChiara*
- **CCRN-PCCN Certification Review:** Neurologic Part I - *Cynthia Blank-Reid*

5:00 – 7:00 pm Dinner Program
It Only Hurts When We Don't Laugh! The Power of Humor - *Deb Gaudin*



CONFERENCE SCHEDULE

THURSDAY, SEPTEMBER 29 *Advanced Practice Pharmacology*

6:30 – 7:45 am *Sunrise Session*

Sepsis: Redefined, Less is More and Early is Better - *Christina L. Candeloro*

7:00 – 7:50 am *Registration and Morning Coffee*

7:50 – 8:00 am *Greetings*

8:00 – 9:15 am *Plenary Session*

Discover the Leader Within You - *Mary Bylone*

9:15 – 9:30 am *Session Change*

9:15 – 1:00 pm *Exhibit Hall Open – Poster Sessions*

9:30 – 10:45 am *Concurrent Sessions*

- **Cardiac:** Mnemonics to Remember Cardiac Medications - *Vicki Brzoza*
- **Respiratory:** Managing Respiratory Failure: From Room Air to the Ventilator - *T.J Berger*
- **Pharmacology:** Anesthetic Medications in the Critical Care Unit - *Jill Hanisak*
- **CCRN-PCCN Certification Review:** Neurologic Part II – *Cynthia Blank-Reid*

10:45 – 11:00 am *Session Change*

11:00 – 12:15 pm *Concurrent Sessions*

- **Multisystem:** Helping Our Patients Survive Sepsis - *Donna Barto*
- **Cardiac:** The Highs and Lows of Hemodynamic Monitoring - *Karen Ruffin*
- **Pharmacology:** Multimodal Analgesia in Treating Acute Pain: A Focus on Quality of Patient Care - *Maureen Cooney*
- **CCRN-PCCN Certification Review:** Multisystem - *Tania McAlorum-Hoyer*

11:45 – 12:45 pm *Exhibit Hall – Zoll CPR Challenge*

12:15 – 12:30 pm *Session Change / Lunch*

12:30 – 1:30 pm *Lunchtime Session*

OFIRMEV (acetaminophen) Injection: A Non-Opioid Foundation for Multimodal Analgesia in the Perioperative Patient - *Ronak Desai*

1:30 – 1:45 pm *Session Change*

1:45 – 3:00 pm *Concurrent Sessions*

- **Clinical:** Enhanced Recovery After Surgery: What Does this Mean for the Patient and Me? - *Jill Hanisak*
- **Pharmacology:** Forget Percocet®: Multimodal Pain Management Strategies - *Andrew Rogalski*
- **Cardiac:** Engaging Nurses in Advanced Resuscitation Training: A Novel Approach - *Sheri J. Villanueva-Reiakvam*
- **CCRN-PCCN Certification Review:** Endocrine and Behavioral - *Lorraine Micheletti*

3:00 – 3:15 pm *Session Change*

3:15 – 4:30 pm *Concurrent Sessions*

- **Cardiac:** Updates on PAH - *Anjali Vaidya*
- **Pharmacology:** Wake up! Making the Case for Less Sedation - *Andrew Rogalski*
- **Respiratory:** Keys to Early Extubation and Avoiding Prolonged Intubation Meeting STS Metrics - *Robyn Strauss*
- **CCRN-PCCN Certification Review:** Renal and Hematologic - *Lorraine Micheletti*



CONFERENCE SCHEDULE

FRIDAY, SEPTEMBER 30

Leadership

6:30 – 7:45 am Sunrise Session
Multimodal Analgesia for Critically Ill Patients - *Rosemary C. Polomano*

7:00 – 7:50 am Registration and Morning Coffee

7:50 – 8:00 am Greetings

8:00 – 9:15 am Plenary Session
Healthy Work Environment -
Kathy McCauley

9:15 – 9:30 am Session Change

9:30 – 10:45 am Concurrent Sessions

- **Clinical:** Registered Nurse Self-Efficacy with Evidence-Based Practice and a Nurse-Driven Telemetry Discontinuation Protocol - *Patricia Bowen*
- **Professional:** On the Road to Excellence: Putting Structures and Processes in Place for Shared Governance Success - *Susan Fisher*
- **Clinical:** Developing the Nurse Magician: an Effective Model and Tool for Reclaiming Spirituality within Healthcare -
Donna M Fahey
- **Professional:** Getting the Most Out of Competency Assessments -
Anne Marie Palatnik

10:45 – 11:00 am Session Change

11:00 – 12:15 pm Concurrent Sessions

- **Clinical:** Code Green for Workplace Violence - *Yana Dilman*
- **Professional:** Get engaged and discover what your local AACN Chapter can do for you: "It Matters" - *Holly Rodgers*
- **Professional:** Back to School: Selecting the Program that's Right for You -
Amy Glasofer
- **Professional:** A Fresh Look at Quality and Safety: What's Our Responsibility? -
Anne Marie Palatnik

12:15 – 12:30 pm Session Change / Lunch

12:30 – 1:30 pm Lunchtime Session
Are You Prepared for the Transgender Patient in Your ICU? - *Barbara Chamberlain*

1:30 – 1:45 pm Session Change

1:45 – 3:00 pm Closing Professional
You Too can be a Nurse "Intra" Preneur!
Be the Change You Want to See in Your Practice Environment - *Ann Marie Reid*



Discover the nursing leader within you



HOTEL AND AREA INFORMATION



HOTEL RESERVATIONS

Radisson Hotel Valley Forge

The Valley Forge Casino Resort consists of the Radisson Hotel Valley Forge and the Casino Tower.

Special sleeping room rates of \$129 single or double have been arranged. Hotel tax is 8%. To make your reservation go to www.vfcasino.com choose Radisson or Casino Tower (discount code for Radisson is **TRENDS**). To receive your special rate of \$129, make your reservation before September 6, 2016. Free self-parking is available for all TRENDS attendees.

Reservations by phone: (610) 354-8118

Book your reservation in the TRENDS room block and receive 20% off your food bill at any of the hotel food outlets and double gold points for Club Carlson. Guests attending the TRENDS conference and not staying in the Radisson Hotel Valley Forge TRENDS room block will receive 15% discount for lunch only.



KING OF PRUSSIA MALL

Our location for TRENDS is just half a mile from the East Coast's largest shopping mall. At The Plaza and The Court at King of Prussia Mall, you'll find an unparalleled combination of American and European retailers.

■ Website: www.kingofprussiamall.com

The King of Prussia Mall includes seven department stores – Bloomingdale's, Neiman Marcus, Nordstrom, Lord & Taylor, JCPenney, Sears and Macy's – plus 365 specialty shops and more than 40 restaurants and eateries. And best of all, Pennsylvania charges no sales tax on clothing.

■ Shuttle Bus: The hotel provides complimentary shuttle service to the mall, the shuttle leaves from the Radisson Hotel Valley Forge lobby entrance, typically at the top of every hour. It is advised that if you are interested in utilizing the shuttle as a group to check in with the front desk or bell staff prior to departure. (Note: The shuttle is not available at 5:00 pm Monday–Friday. If you wish to go to the Mall around that time, please plan to take the 4:00 pm or 6:00 pm shuttle.)



THINGS TO DO

For things to do in Philly, Valley Forge and the surrounding area, check the following websites where you will find calendars of events and information on shopping, attractions, sightseeing, and entertainment:

- Philadelphia Convention and Visitors Bureau
www.philadelphiausa.travel/plan-your-visit
- Valley Forge Convention and Visitors Bureau www.valleyforge.org Click on "Visitors" on the top bar.
- Valley Forge National Park
www.nps.gov/vafo



RESTAURANT RESERVATIONS

If you would like to join colleagues for dinner, stop by the Restaurant Reservations / Information booth in the Registration Area. The Valley Forge Convention and Visitors Bureau will be available to provide on-site reservation assistance and local area information.

The restaurants available are: Fine Dining LP Steak (reservations recommended), Valley Tavern, Nosh Deli, Asianoodle, American Grill, and Italian Market.

15% discount (lunch only) at all restaurants. Please pick up a voucher at the TRENDS registration desk.

TRAVEL INFORMATION

TRAVEL BY AIR

Major airlines fly frequently into Philadelphia International Airport, which is a comfortable 30-minute drive to King of Prussia. Hourly shuttle service is available from the airport to the Valley Forge Casino Resort through Tropiano Transportation (see below to make reservations). Budget Car Rental is available on the premises at the Radisson Hotel Valley Forge.

TRAVEL BY TRAIN

AMTRAK Metroliner Service puts Philadelphia's 30th Street Station just 70 minutes from Manhattan and 100 minutes from Washington, DC. Rent a car or contact Tropiano Transportation (see below to make reservations).

TRANSPORTATION FROM AIRPORT TO HOTEL

- **Shuttle Service:** Contact Tropiano Transportation at 800.559.2040 or visit www.tropianotransportation.com/shuttle. Tropiano requires 24-hour prior reservation notice. The cost is approximately \$24 one way.
- **Taxi or Limo:** The cost is approximately \$65 one way.

TRAVEL BY AUTOMOBILE

Free parking is provided for all TRENDS conference participants traveling to King of Prussia by car. For driving directions go to www.mapquest.com.

GETTING AROUND WITH SEPTA

The Southeastern Pennsylvania Transit Authority (SEPTA) bus stop is located on First Avenue, a short walk across the parking lot from the Radisson lobby. Public transportation is available to downtown Philadelphia's city center just a few blocks from the Independence Visitor Center. Bus schedules and cost can be obtained at the Radisson front desk or visit the SEPTA website: www.septa.org.

GENERAL INFORMATION

REGISTRATION

Please register online through the following website: www.aacnsepa.nursingnetwork.com. It's fast, convenient, and easy to use. VISA, MasterCard, Discover, and AMEX accepted. Online registrations receive immediate confirmation. Maximum and minimum registration levels have been established. In the highly unlikely event that minimum registration is not reached one week prior to the conference, it may be subject to cancellation.

CANCELLATION / REFUND POLICY

Cancellations received THIRTY DAYS PRIOR TO THE CONFERENCE START DATE will receive a full refund of the conference registration fee, minus a \$75 administrative charge. No refunds will be issued for cancellations received or postmarked on/after that date. Refunds or credit will not be given for failure to attend, late arrival, unattended events, or early departure. SePA must be notified in writing of your intent to cancel prior to the cancellation deadline. E-mail your cancellation notification to emorris@virtua.org or via U.S. mail to TRENDS, Virtua Center for Learning, 1200 Howard Blvd. Suite 100, Mt. Laurel, NJ 08054. Personal Checks are not accepted at the conference.

CONFERENCE ETIQUETTE

Participants are asked to turn off cell phones and beepers or change them to a silent signal when attending sessions. Please step outside the room when responding to a page or call. Children are not permitted in the sessions. This is a non-smoking conference.

Thank you Conference Planning Committee Members:

- Cindy Barnes, RN, CCRN
- Donna Barto, DNP, RN, CCRN
- Vicki Brzoza, MSN, MBA, RN, CCRN
- Barbara Chamberlain, PhD, APRN, MBA
- April Chmielinski, MSN, RN, CCRN, CCNS
- Samantha Delaney, BSN, RN, CCRN, NE-BC
- Laurie Dougherty, MSN, CRNP, BC
- Katherine M. Durning, RN, CCRN
- Leslie Foran-Lee MSN, RN, PCCN
- Joyce Foresman-Capuzzi, MSN, RN-BC, CCNS
- Stephanie Maillie, MSN, RN, PCCN, CCRN
- Tricia Nichols, MSN, RN, CCRN
- Anne Marie Palatnik, MSN, RN, ACNS-BC
- Deborah Paschal, BSN, MSN, CRNP
- Sue Politsky, PhD, RN, NE-BC – Primary Nurse Planner
- Debbie Reddy, BSN, RN
- Holly Rodgers, MSN, CRNP, ACNPC-AG, CCRN
- Rose Shaffer, MSN, CRNP, ACNP-BC, CCRN
- Deneen Stokes, RN, PCCN
- Robyn Strauss, MSN, RN, ACNS-BC, WCC
- Claire Marie Tack, RN, MSN, CCRN

FACULTY

David Adler, BA, NRP
Gendarme Consulting

Donna Barto, DNP, RN, CCRN

Virtua ~ Advanced Clinical Educator

T.J. Berger, MS, PA-C, RPSGT

Aria Health ~ Lead Advanced Practice Professional for Critical Care

Cynthia Blank-Reid, MSN, RN, CEN

Temple University Hospital ~ Trauma Clinical Nurse Specialist

Patricia Bowen, DNP, RN, NE-BC, MBA

Virtua ~ AVP, Patient Care Services

Vicki Brzoza, MSN, MBA, RN, CCRN

Capital Health/Thomas Edison State University ~ Nursing Instructor

Lauren Burk, BS, RN

Virtua ~ Registered Nurse;
TRENDS 2015 SePA Star Search Winner

Mary Bylone, MSM, RN, CNML

President, Leaders Within, LLC

Terri Campana, MSN, RN, CCRN

Inspira Health ~ Clinical Nurse Specialist

Christina L. Candeloro, PharmD, BCPS

Hospital of the University of Pennsylvania ~ Clinical Pharmacy Specialist

Barbara Chamberlain, PhD, APRN, MBA

NJSNA ~ Director of Government Affairs

Maureen Cooney, DNP, MSN, FNP, RN-BC

Supported by Mallinckrodt Pharmaceuticals

Ronak Desai, DO

Supported by Mallinckrodt Pharmaceuticals

Katie Detrick, BSN, RN, CCRN

Abington Jefferson Health ~ Staff Nurse Cardiac Intensive Care

Cyndi DiChiara, MSN, RN, CCRN

Aria Health ~ Nursing Staff Development Educator

Yana Dilman, BSN, RN, PCCN

Pinnacle Health System ~ Clinical Manager Intermediate Care;
TRENDS 2015 SePA Star Search Winner

Donna M. Fahey, MFA, BSN, RN, CCRN, HNB-BC

Virtua ~ Registered Nurse ICU;
TRENDS 2015 SePA Star Search Winner

Susan K. Fisher, MSN, APN-C, ACNS-BC, CNOR

Virtua ~ Director of Clinical Practice

Eleanor Fitzpatrick, MSN, RN, ACNP-BC, AGCNS-BC, CCRN

Thomas Jefferson University Hospital ~ CNS

Leslie Foran-Lee, MSN, RN, PCCN

Virtua ~ Advanced Clinical Educator

Deb Gauldin, RN

Speaker, Author, Recording Artist

Amy Glasofer, DrNP, RN, NE-BC

Virtua ~ Director of Nursing Research and EBP

Jill Hanisak, CRNA, MS

LVHN ~ Anesthesia Education Coordinator

Carey Heck, PhD, CRNP, ACNP-BC, CCRN, CNRN

Thomas Jefferson University School of Nursing ~ Assistant Professor

Tania McAlorum-Hoyer, BSN, RN, CCRN-CSC

Doylestown Hospital ~ Critical Care Clinical Educator

Kathy McCauley, PhD, RN, FAAN, FAHA

University of Pennsylvania School of Nursing ~ Professor of Cardiovascular Nursing

A.E. Mica, RN, A-CNS, BC

Einstein Health System ~ Nurse Navigator

Lorraine Micheletti, MA, MSN, CCRN

Mercy Fitzgerald Hospital ~ Patient Care Manager

Tricia Nichols, MSN, RN, CCRN

Aria Health ~ Director of Nursing Education

Anne Marie Palatnik, MSN, RN, ACNS-BC

Virtua ~ AVP Clinical Learning & Academic Affiliations

Joanne Phillips, DNP, RN, CPPS

Penn Homecare and Hospice Services ~ Manager of Quality and Safety

Rosemary C. Polomano, PhD, RN, FAAN

University of Pennsylvania School of Nursing ~ Professor of Anesthesiology and Critical Care

Mary Frances Quinn, RN, BSN, CCRN

Hospital of the University of Pennsylvania ~ Clinical Nurse IV

Wendi Rank, MSN, RN, CRNP, CNRN

Neuroendovascular Consulting ~ Independent Consultant

Ann Marie Reid, RN, MSN, CEN, PHRN

Aria Health ~ Clinical Associate Executive Director

Holly Rodgers, MSN, CRNP, ACNPC-AG, CCRN

Corporal Michael J. Crescenz VA Medical Center ~ CRNP Surgical Intensive Care

Andrew Rogalski, PharmD, BCPS

Corporal Michael J. Crescenz VA Medical Center ~ Clinical Pharmacy Specialist

Karen Ruffin, MSN Ed., RN, CCRN

Virtua ~ Advanced Nurse Clinician

Rose Shaffer, MSN, CRNP, ACNP-BC, CCRN

Thomas Jefferson University Hospital ~ Cardiology Nurse Practitioner

Donna Siegmeister, MA, RN-BC, CNRN, PCCN

Virtua ~ Advanced Nurse Clinician

Desiree M. Soto, RN, CCRN

Einstein Medical ~ Electrophysiology/Device Nurse

Robyn Strauss, ACNS-BC, MSN, RN, WCC

Hospital of the University of Pennsylvania ~ CNS Heart & Vascular ICU

Ashley Trinsey, MSN, RN, CCRN, ACCNS-AG

Hospital of the University of Pennsylvania - Clinical Nurse Specialist;
TRENDS 2015 SePA Star Search Winner

Anjali Vaidya, MD, FACC, FASE, FACP

Temple University Hospital ~ Associate Professor of Medicine/Associate Director

Sheri J. Villanueva-Reiakvam, RN

Supported by Zoll Medical Corporation

Clareen Wiencek, RN, PhD, ACNP, ACHPN

AACN President; University of Virginia School of Nursing ~ Associate Professor

2016 TRENDS REGISTRATION

TRENDS • SEPTEMBER 27 – 30, 2016
Radisson Hotel Valley Forge
1160 1st Ave., King of Prussia, PA 19406

PLEASE REGISTER ONLINE THROUGH THE FOLLOWING WEBSITE:

<https://aacnsepa.nursingnetwork.com>

SePA Member

Full Four Day Rate	\$500
Three Day Rate	\$450
Two Day Rate	\$300
One Day Rate	\$150

Non SePA Member:

Full Four Day Rate	\$650
Three Day Rate	\$600
Two Day Rate	\$400
One Day Rate	\$200

Virtua Employee:

Full Four Day Rate	\$500
Three Day Rate	\$450
Two Day Rate	\$300
One Day Rate	\$150

Optional Dinner Program –

September 28th, 2016 from 5pm–7pm, \$40 to be added at the end of each registration option

WORKSHEET FOR ON-SITE REGISTRATION

First Name: _____

Last Name: _____

Credentials (as will be displayed on badge): _____

Home Mailing Address: _____

City: _____ State: _____ Zip: _____

Employer Name _____

Employer Address: _____

City: _____ State: _____ Zip: _____

Mobile Phone: _____ Home Phone: _____

E-mail Address: _____

RN License Number: _____ NP License Number: _____ Licensure State: _____

AACN Member Number: _____ Exp. Date _____

SePa Chapter Number: _____ Exp. Date _____

On-site Registration Credit Card or Cash only

<https://aacnsepa.nursingnetwork.com>

TRENDS

IN CRITICAL CARE NURSING™ 2016

September 27-30
Radisson Hotel Valley Forge
King of Prussia, PA



INCLUDED IN TUITION

- Plenary sessions
- Concurrent sessions
- On-line proceedings and program guide
- Admission to exhibits
- Exhibit networking reception
- Continental breakfast each day
- Refreshment breaks
- Sunrise and evening sessions
- Optional lunchtime sessions
- Ice cream social in exhibit hall
- Contact hour certificate



Virtua Center for Learning
1200 Howard Blvd
Suite 100
Mt. Laurel, NJ 08054