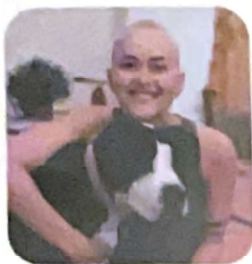




RUTLEDGE CANCER FOUNDATION

For adolescents and young adults, cancer is a different kind of fight.
That's why we're here.

Our Story



Rutledge Cancer Foundation (RCF) was founded in 2011 after Carley Rutledge was diagnosed with Stage 4 Ewing sarcoma, a rare, aggressive cancer at age 15. Throughout Carley's cancer journey, she and her friends and family quickly realized that patient care, resources, treatment options and survival rates of adolescents and young adults (AYAs) with cancer lagged far behind other age groups.

She became passionate about finding solutions to these unmet challenges that she and thousands of other AYA cancer patients were experiencing.

Carley's treatment included 14 rounds of chemo and 43 days of radiation. When her cancer returned one year later, she chose to be a part of a novel vaccine trial to help improve treatment and cure rates. That allowed her to live a full life for eight more years until the cancer returned in 2020. She passed away at the age of 27 in late 2021.



While Carley is no longer with us, it's her personal journey that shaped RCF's mission and continues to drive our work today.

Our Mission

- Ease the impact of cancer on the lives of adolescents and young adults (AYAs) with cancer
- Raise survival rates
- Find a cure for sarcomas and other solid tumor cancers.

Our Why



Each year, nearly 90,000 AYAs are diagnosed with cancer, and this number is rising. Yet, childhood and AYA cancer research receives less than four percent of the NIH's annual budget. Due to limited funding for research and clinical trials, treatment options and survival rates for AYAs have seen little progress in over 40 years.

Additionally, due to their age and the transitional life stage they're in, AYA cancer patients also experience a unique set of needs often overlooked by the medical community. They may be finishing high school, in college or even starting a family. Receiving a cancer diagnosis can turn their lives upside down.



Easing the Impact

Patient Programs

Carley's Closet

Carley's Closet provides bags and stockings during Christmas to newly diagnosed patients, filled with age-appropriate comfort and entertainment items to make an AYAs treatment journey more comfortable.

We currently have 11 partner organizations across Texas and two in Colorado that distribute our bags. To date, we have distributed more than 5,000 bags.



Oncofertility Program

Cancer treatment can cause fertility loss, a major concern for patients of reproductive age and a source of emotional distress.

In partnership with Moncrief Cancer Institute/UT Southwestern, Cook Children's, and MD Anderson, RCF launched the first community-based Oncofertility Preservation Program, providing education, care coordination, and financial support for underserved AYA cancer patients.

Since its launch, RCF has helped over 300 patients preserve their fertility.



Caregather

Caregather is an online resource that helps cancer patients and their families stay connected and informed, offering tools for sharing updates, sending gift cards, organizing meals, carpooling, grocery lists, and more.



Patient Events

Our patient events bring patients, survivors and their friends and families together — offering a space to connect, share resources and similar experiences with others who understand the everyday struggles cancer brings. Some examples include RCF Day at the Rodeo, Top Golf, Boo at the Zoo and RCF Day at the Rangers Game.



Fundraising

We host two signature events: the Hearts of Gold Dinner and Auction and the Paddling Out Cancer Pickleball Tournament. We're also a charity partner of the Denver Colfax Marathon and we participate in smaller events and third-party fundraisers. Additionally, we raise funds through grants, major gifts, and donations from foundations, corporations, and individuals who support our mission.



Research

Due to limited research and clinical trials, treatment options and survival rates for AYAs with sarcomas and solid tumors have seen little progress in over 40 years. We fund targeted, personalized, less toxic research and clinical trials that use the patient's immune system to fight cancer.

We also connect researchers, clinicians, and advocates to accelerate drug development, saving resources and delivering therapies faster.

To date, we've funded over \$2 million in research, supported 14 therapies, and seven clinical trials.

