



**Come to the 32nd Annual New England School Nurse Conference!  
May 1-3, 2020  
Wyndham Newport Hotel  
240 Aquidneck Avenue, Middletown, RI**



Set your sights on Rhode Island and join us for an educational experience that will clarify your professional practice. From hands-on learning to nationally and regionally renowned presenters, let's explore what our vision of school nursing looks like in 2020. On Friday night, come early to network and relax with colleagues at an on-site wine tasting, hospitality, and registration. Then, attend one of the four pre-conference sessions, including a SNAP user's group session. On Saturday morning, P. Kay Nottingham Chaplin, EdD. and Dr. Bruce Moore, children's vision experts, will navigate the A,B,C's of Vision in 2 general sessions. We are delighted to welcome Nichole Bobo, MSN, RN, NASN's Director of Nursing Education, to present a two part skills based approach to Managing Chronic Health Conditions in Schools as part of the CDC grant : *Collaboration to Support Students with Chronic Health Conditions*. All sessions align with NASN's Framework for 21st Century School Nursing Practice, which Ms. Bobo co-authored, and will expand your skill set and enrich your practice. Additional breakouts include 3 hands-on skill sessions, the vaping epidemic, and working with students and families who are experiencing grief and loss. This conference is intended for all school nurses, from novice to expert, to explore, learn, and renew our focus on student health! Space is limited to 25 participants for hands-on skill sessions, register today!

**The goals of Eyes on School Health : Vision of School Nursing 2020**

- 1. Expand your knowledge and skills to support student health**
- 2. Apply knowledge to your daily practice to enhance student outcomes**



**New England Conference  
Eyes on School Health : Vision of School Nursing 2020**



**Registration Costs**

***Early Bird Registration-- January 15 to February 29, 2020***

Friday only \$50 Saturday Only: \$190  
Full Conference: Friday, Saturday, and Sunday: \$230

***Standard Registration-- March 1 to April 1, 2020***

Friday only \$60 Saturday Only: \$210  
Full Conference: Friday, Saturday, and Sunday: \$250

***Late Registration--April 1 to April 30, 2020***

Friday only \$70 Saturday Only: \$250  
Full Conference: Friday, Saturday, and Sunday: \$290

**Contact Hours-Pending**

**Friday only-2.0 contact hours**

**Saturday only-6.0 contact hours**

**Entire Conference 11.0 contact hours**

**This activity has been submitted to the Northeast Multistate Division for approval to award contact hours. The Northeast Multistate Division is accredited as an approver of nursing continuing professional development by the American Nurses Credentialing Center's Commission on Accreditation**

**Registration is online via Nursing Network**

**No registrations will be accepted after April 30th.**

**No Checks or Purchase Orders**

**Refund Policy:** All registrations are final. If you are unable to attend the conference, you may send another person in your place. Please email [rhondasexton7@gmail.com](mailto:rhondasexton7@gmail.com) with your name and the person who will be attending in your stead.

**Reasonable Accommodations:** Requests for accessibility accommodations can be listed here or in an email to [rhondasexton7@gmail.com](mailto:rhondasexton7@gmail.com). RICSNTA strives to make reasonable accommodations for all attendees submitting a request.

**Conference Handouts:** All presentations will be electronic and each attendee will receive an email to access these handouts prior to the conference to allow time for attendees to print materials prior to the conference if they so choose.

Click [here](#) to register for the New England School Nurse Conference.



**New England Conference  
Eyes on School Health : Vision of School Nursing 2020**



## **Hotel**

**Book Your Rooms NOW at Wyndham Newport Hotel, 240 Aquidneck Ave.,**

**Middletown, RI.:** Reserve your room at the conference rate of \$199.00 per night (includes free parking). Please call (401) 236-2020 to reserve your room (reference the New England School Nurse Conference). All rooms have either 1 or 2 King sized beds. Room block is limited, so call today!

**Food/Meals Provided** - All food is provided from the Wyndham Newport Hotel, they do not allow for outside food to be brought in. As a part of your conference fee the following will be provided to you and the cost is included in the registration fees:

Friday: Snacks in the hospitality area included, **optional onsite wine tasting is additional \$20 charge paid at the time of registration.**

Saturday: Buffet breakfast, Plated Lunch, Afternoon snack

Sunday: Buffet breakfast

**Food sensitivities and allergies:** Wyndham Newport Hotel requests permission to access your registration contact information if you indicate at registration that you have any dietary needs. By indicating on the registration form that you have a dietary need, you are giving permission for the hotel to receive your email and phone number to contact you if needed. Please contact [rhondasexton7@gmail.com](mailto:rhondasexton7@gmail.com) if you have any questions.

***Please bring your gently used glasses to donate to the Lions Club. They provide the glasses to third world countries. Receive 1 free ticket for the raffle baskets, per pair of glasses donated.***

## **Keynote Speakers**

**“Vision: The Cornerstone of Childhood Development”- Classroom Behaviors, Academic Challenges, and the Importance of Early Detection and Correction**

Together, Dr. Kay and Dr. Moore will provide attendees with practical, evidence based screening tools, and discuss challenges from referral to exam to treatment. They will address cultural barriers, ways to improve health inequity and disparities regarding vision health, and all aspects of vision screening at school. Dr. Kay and Dr. Moore are committed to educating teachers regarding vision related behaviors in the classroom, and screening techniques for our special needs populations.

The second general session will include a panel discussion with Q&A session, moderated by Paulette Tattersall, DipPharm, MSc., Director of the Northeast Region of Prevent Blindness. Please come with your specific questions from your experiences with student vision screenings in your practice.

Click [here](#) to register for the New England School Nurse Conference.



**P. Kay Nottingham Chaplin EdD, Education and Outreach Coordinator, National Center for Children's Vision and Eye Health**

Dr. Kay is an internationally renowned professional and tireless advocate for children's vision screening, early detection, and correction and has presented 200+ vision-related lectures nationally and internationally. Among her articles is a 3 part series in NASN School Nurse magazine, [12 Components of a Strong Vision Health System of Care.](#)



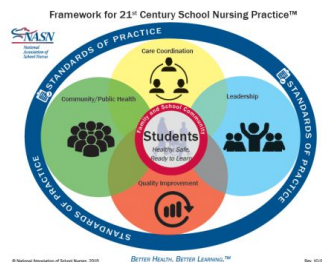
**Bruce D. Moore, O.D., Professor Emeritus, New England College of Optometry**

Dr. Moore's career as a pediatric optometrist has been devoted to studying the vision problems and therapeutic options for young children. Dr. Moore's work has extended internationally to strengthen vision care programs in the developing world. His dynamic presentation engages participants with practical advice that can be used during vision screening and referral in a busy school health office.

## Agenda and Presentation Descriptions

**Friday**

May 1, 2020



**Time**

**Event**

**Location**

5:00 - 8:30 pm

Hospitality and Registration

Atlantic  
Pre-Function 1st  
Floor

5:30 - 7:00 pm

Optional **Wine Tasting by Greenvale Vineyards** with Live Music. Join us for wine tasting with Portsmouth's award winning wine made from grapes from Greenvale Vineyards.  
Pre-Registration REQUIRED - there is a \$20 charge for this event.

Atlantic Pavilion  
1st Floor



# New England Conference Eyes on School Health : Vision of School Nursing 2020

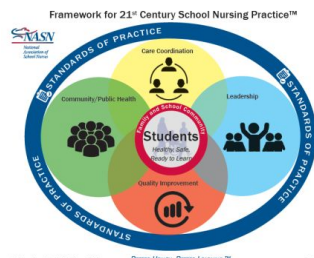


## Friday con't

7:00 - 9:00 pm	<b>Breakout 1: Appearance and Performance Enhancing Substances: A Silent Epidemic</b> , Don Hooton-Taylor Hooton Foundation. This explores the widespread use of dietary supplements and anabolic steroids while examining the root causes of the issue using the story of Taylor Hooton. <a href="#">Framework for 21st Century School Nursing Practice: Community Public Health</a>	TBD
	<b>Breakout 2: Endo-what?</b> , Dr. Kip MacKenzie, Harvard Medical School This session will enhance your understanding of Endometriosis diagnosis, current treatments, and care and referral of symptomatic students in the health office. <a href="#">Framework for 21st Century School Nursing Practice: Care Coordination</a>	TBD
	<b>Breakout 3: SNAP Online School Health Module</b> , Bill O'Malley. Existing customers come together to share best practices in documentation with SNAP Health Center. This session is intended for nurses <u>who are already using SNAP in their school</u> . <a href="#">Click here to view a flyer from SNAP</a> . <a href="#">Framework for 21st Century School Nursing Practice: Leadership</a> .	TBD
	<b>Breakout 4: Stop the Bleed - Tourniquet Application</b> , Brooke Lawrence, Executive Officer, Rhode Island Disaster Medical Assistance Team. In a mass casualty situation, applying tourniquets is the one thing that you can do to save the most lives. <a href="#">Framework for 21st Century School Nursing Practice: Community Public Health</a>	TBD

## Saturday May 2, 2020

Time	Event	Location
7:00 - 8:00 am	Registration and Buffet Breakfast,	1st Floor, Atlantic Pavilion
	Raffle Baskets and Vendors	2nd Floor, Easton Pavillion
8:00 -8:15am	Welcome and Introductions- Conference Co-Chairs Rhonda Sexton Amy Dark Greetings from RICSNTA-Rhode Island Certified School Nurse Teacher Association Rachel Cruz, President	1st Floor, Atlantic Pavilion
8:15-9:45am	<b>Keynote Presentation, Part 1 "Vision: The Cornerstone of Childhood Development" Classroom Behaviors, Academic Challenges, and the Importance of Early Detection and Correction</b> , Dr. P. Kay Nottingham Chaplin and Dr. Bruce Moore <a href="#">Framework for 21st Century School Nursing Practice:: Standards of Practice</a>	1st Floor, Atlantic Pavilion



Click [here](#) to register for the New England School Nurse Conference.



## New England Conference Eyes on School Health : Vision of School Nursing 2020



9:45-10:30am	<b>Visit with Vendors, Coffee, or take a Break</b>	Pre-Fxn 2 <sup>nd</sup> FL
10:30-12:00pm	<b>Breakout 1: Hands On Assessment of Ears, Nose, and Throat</b> Sue Levasseur APRN, CPNP, MSN, NCSN and Michael Corjulo APRN, CPNP, AE-C, PMHS. BRING YOUR OTOSCOPE and confidence and competence to assess common ENT complaints and make appropriate medical referrals. *MAX 25 PARTICIPANTS* <a href="#">Framework for 21st Century School Nursing Practice: Quality Improvement</a>	TBD
	<b>Breakout 2: Skills Based Approach to Managing Chronic Health Conditions in Schools Part 1: From Observation to Action-Planning and Implementing Care, Including Individual Healthcare plans, IHPs (<u>Attendee MUST sign up for BOTH Sections 1 &amp; 2 - Breakout #2 below</u>)</b> , Nichole Bobo, MSN, RN- NASN Director of Nursing Education. <a href="#">Framework for 21st Century School Nursing Practice: Care Coordination</a>	TBD
	<b>Breakout 3: Vaping in Our Schools</b> , Jason Berthelette-Woonsocket, Rhode Island Police Officer. Take a look at what vaping is, tools used, how these tools are manipulated and how to effectively communicate with parents of an impaired student. <a href="#">Framework for 21st Century School Nursing Practice: Community/Public Health</a>	TBD
	<b>Breakout 4: Gender Identity and the School Nurse's Role</b> , Dr. Joanna Brown, Medical Director, WellOne Foster, Rhode Island. Learn how to support and advocate for school age students and their families experiencing gender identity related issues. <a href="#">Framework for 21st Century School Nursing Practice: Community Public Health</a>	TBD
12:00-1:00	<b>Plated Lunch / Vendors 2nd Floor, Baskets 2nd Floor</b>	Easton Pavilion and Pre-Fxn 2 <sup>nd</sup> FL
1:00-2:30	<b>Keynote Presentation, "Vision: The Cornerstone of Childhood Development" Classroom Behaviors, Academic Challenges, and the Importance of Early Detection and Correction, Part 2</b> , Dr. Kay Nottingham Chaplin and Dr. Bruce Moore. Panel discussion and Q&A session will be moderated by Paulette Tattersall, DipPharm, MSc., Director of the Northeast Region of Prevent Blindness. <a href="#">Framework for 21st Century School Nursing Practice: Care Coordination</a>	Atlantic Pavilion 1 <sup>st</sup> FL
2:30-3:15	<b>Visit with Vendors/Snack</b>	Pre-Fxn 2 <sup>nd</sup> FL





## New England Conference Eyes on School Health : Vision of School Nursing 2020



### Saturday con't

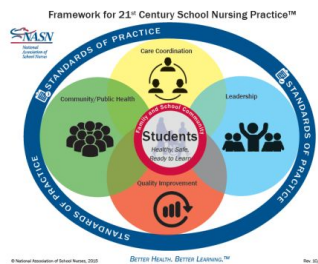
Time	Event	Location
3:15-4:45	<b>Breakout 1: Vaping in Our Schools</b> , Jason Berthelette, Woonsocket Rhode Island Police Officer. Take a look at what vaping is, tools used, how these tools are manipulated and how to effectively communicate with parents of an impaired student. <a href="#">Framework for 21st Century School Nursing Practice: Community and Public Health</a>	TBD
	<b>Breakout 2: Skills Based Approach to Managing Chronic Health Conditions in Schools Part 2: From Implementation to Evaluation (Attendee MUST sign up for BOTH Sections)</b> , Nichole Bobo MSN, RN-NASN Director of Nursing Education. <a href="#">Framework for 21st Century School Nursing Practice: Care Coordination</a>	TBD
	<b>Breakout 3: Parent Communication and Engagement</b> , RIPIN-Rhode Island Parent Information Network-Tara Townsend. Join is to learn techniques to engage parents in their child's health and ways to communicate more effectively. <a href="#">Framework for 21st Century School Nursing Practice: Care Coordination</a>	TBD
	<b>Breakout 4: Hands on Assessment of Ears, Nose and Throat</b> Sue Levasseur APRN, CPNP, MSN, NCSN and Michael Corjulo APRN, CPNP, AE-C, PMHS. BRING YOUR OTOSCOPE and come to improve your ability and gain confidence to assess common ENT complaints and make appropriate medical referrals. *MAX 25 PARTICIPANTS* <a href="#">NASN Framework for 21st Century School Nursing Practice: Standards of Practice</a>	TBD
6:00 - 1100 PM	<b>FREE Shuttle service between the hotel and downtown Newport. Shuttles will leave from the main entrance of the hotel, with scheduled drop off and pick up locations every 30 minutes. Evening on your own. If you are planning to go out for dinner as a group, please make your reservations early as Newport is a popular destination year round!</b>	Hotel Lobby



# New England Conference Eyes on School Health : Vision of School Nursing 2020



**Sunday** May 3, 2020



<i>Time</i>	<i>Event</i>	<i>Location</i>
7:00-8:00am	<b>Buffet Breakfast</b>	Atlantic Pavilion 1 <sup>st</sup> FL
8:00-8:30am	<b>Announcements &amp; NH Conference Host 2021</b>  <b>Greetings-Linda L. Mendonca, MSN, PHNA-BC, NCSN, FNASN, NASN President Elect</b>	Atlantic Pavilion 1 <sup>st</sup> FL
8:30-10:00am	<b>Keynote Presentation:</b>  <b>Let's Clear the Air: What you need to know about Vaping, Daniel Fitzgerald, MPH, ICPS</b>  <b>CVS Sponsored Speaker</b>	Atlantic Pavilion 1 <sup>st</sup> FL
10:15-11:45am	<b>Breakout 1: Managing and Preventing Tick Bites.</b> Dr. Tom Mather-"URI Tick Guy." Dr. Mather, nationally renowned tick expert and University of RI have extensive Tick research and education to share with you. Participants should bring a device to access the internet during the presentation. Visit the website at <a href="https://tickencounter.org/">https://tickencounter.org/</a> . <b>Framework for 21st Century School Nursing Practice: Care Coordination</b>	TBD
	<b>Breakout 2: Hands on Respiratory Assessment,</b> Sue LeVasseur APRN, CPNP, MSN, NCSN & Michael Corjulo, APRN, CPNP, AE-C, PMHS. BRING YOUR STETHOSCOPE and learn assessment skills and clinical pearls related to respiratory complaints common to the school nurse. *MAX 25 PARTICIPANTS* <a href="#">Framework for 21st Century School Nursing Practice: Standards of Practice</a>	TBD
	<b>Breakout 3: Pediatric Male Genito-Urinary Emergencies,</b> Gregory Lockhart MD, Lifespan Emergency Medicine. Join this breakout for an overview of common male genital emergencies, symptoms, and causes. Dr. Lockhart is an engaging presenter and promises to make this a learning opportunity not to be missed! <a href="#">Framework for 21st Century School Nursing Practice: Standards of Practice</a>	TBD
	<b>Breakout 4: Working with Grieving Children, Teens, and Families,</b> Ryan Loiselle, LICSW Program Director Friends Way. Young people grieve in many different ways, and supporting them through this process is a critical school nursing skill. Learn how to support families, caregivers, and	TBD

Click [here](#) to register for the New England School Nurse Conference.





## New England Conference Eyes on School Health : Vision of School Nursing 2020



colleagues to approach this challenging work as a team for the student's wellness. [Framework for 21st Century School Nursing Practice: Community Public Health](#)

### Poster Exhibits from DNP Students

We are excited to announce that on Saturday, May 2, there will be 3 DNP Candidates exhibiting the posters that they created as a part of their doctorate work. Please visit their posters and support them and the research they have completed. Viewing times 9:45-10:30am, 12-1pm, 2:30-3:15pm Location TBA

Poster Title: Promoting Self-management Skills that Address the Social Emotional Learning of Adolescents with Chronic Illness in Urban Schools

Name of Presenter: Roselaine C Koech, DNP, M.Ed., RN

School District: Boston Public Schools

Poster Title: Evaluation of School Nurses' Knowledge of Individual School Aged Homeless Children (Grades K 8)

Name of Presenter: Maria Anidi, DNP, MBA, RN

School District: Boston Public Schools

Poster Title: Clinical Care Coordination Program

Names of Presenters: Debra McGovern, DNP, RN, BCPPCNP, Kate Perry, MSN, RN, and Ellen Capstick, MSN, RN, NCSN

School District: Worcester Public Schools

## Conference Sponsors

**Diamond Sponsor:**  
**CVS**



**Event Sponsor:**  
**School Health**



**Keynote Sponsor:**

New England School Nurse  
Conference Committee

**Gift Sponsor:**



**Zanfel Laboratories**

**Gold:**

**SNAP Health Center EHR-For Nurses by Nurses**



**ConvenientMD**

Click [here](#) to register for the New England School Nurse Conference.



**New England Conference  
Eyes on School Health : Vision of School Nursing 2020**



**Silver:  
Hunter Insurance  
RIFTHP**

**Bronze:  
MacGill  
Navigant Credit Union  
VSP**

**Vendors Attending:**

**CVS--Diamond Sponsor  
School Health-Event Sponsor  
SNAP EHR Software - Gold Sponsor  
ConvenientMD-Gold Sponsor**  
American Heart Association  
Bay Path University  
BOKS- Build Our Kids' Success  
Childhood Asthma Research Program  
Day One  
GlaxoSmithKline  
Grand Canyon University  
Happy Girl Jewelry  
Impact Melanoma  
Let's Learn About Lice  
Minding Your Mind

**VSP- Bronze Sponsor  
Wm.V. MacGill & Co - Bronze Sponsor**

Moms Demand Action-RI Chapter  
Northeastern University School Health Academy  
Prevent Blindness  
RI College School of Nursing  
RI Department of Health  
School Nurse Supply  
Shriners Hospital for Children  
WSBE Rhode Island PBS  
Kaleo-Auvi-Q

*The National Association of School Nurse's (NASN) Framework for 21st Century School Nursing Practice™* creates an overarching structure that includes concepts integral to the complex clinical specialty practice of school nursing. The framework provides a graphic illustration of the key principles of professional school nursing practice, reflecting the organization's stance for evidence-based best practice and providing focus to priority school nursing activities. The framework provides guidance for the practicing school nurse to reach the goal of supporting student health and academic success by contributing to a healthy and safe school environment. NASN believes it has a responsibility to its members and to the public they serve to develop a framework for professional school nursing practice.

### Framework for 21<sup>st</sup> Century School Nursing Practice™

NASN's Framework for 21st Century School Nursing Practice (the Framework) provides structure and focus for the key principles and components of current day, evidence-based school nursing practice. It is aligned with the Whole School, Whole Community, Whole Child model that calls for a collaborative approach to learning and health (ASCD & CDC, 2014). Central to the Framework is student-centered nursing care that occurs within the context of the students' family and school community. Surrounding the students, family, and school community are the non-hierarchical, overlapping key principles of Care Coordination, Leadership, Quality Improvement, and Community/Public Health. These principles are surrounded by the fifth principle, Standards of Practice, which is foundational for evidence-based, clinically competent, quality care. School nurses daily use the skills outlined in the practice components of each principle to help students be healthy, safe, and ready to learn.



ASCD & CDC. (2014). Whole school whole community whole child: A collaborative approach to learning and health. Retrieved from <http://www.ascd.org/ASCD/pdf/siteASCD/publications/wholechild/wsc-a-collaborative-approach.pdf>

© National Association of School Nurses, 2015

BETTER HEALTH. BETTER LEARNING.™

Rev: 10/6/16



## Newport Information

[Things to Do While in Newport](#)

[The Ultimate Guide to Parking in Newport](#)

[Restaurants in Newport](#)

Click [here](#) to register for the New England School Nurse Conference.



## **Suggested Restaurants**

### **Wyndham Newport Hotel:**

*Johnny's Restaurant & Patio Bar*  
240 Aquidneck Avenue, Middletown, RI 02842  
(401)236-2020 for Hotel (401)847-2750 for  
Restaurant  
<https://www.johnnysnewport.com/>

### **Middletown**

*Newport Vineyard*  
909 East Main Rd, Middletown, RI 02842  
(401) 848-5161  
<https://www.newportvineyards.com/winery/>  
*Brix*  
<https://www.brixnewport.com/>

### **Thames Street:**

*The Red Parrot*  
348 Thames St, Newport, RI 02840  
(401) 847-3800  
<https://www.redparrotrestaurant.com/>

*Midtown Oyster Bar*  
345 Thames St, Newport, RI 02840  
(401)619-4100  
<https://midtownoyster.com/>

*Surf Club*  
337 Thames St, Newport, RI 02840  
(401) 619-5701  
<https://www.surfclubnewport.com/>

### **Bowens Wharf:**

*The Mooring Seafood Kitchen & Bar*  
1 Sayers Wharf, Newport, RI 02840  
(401)846-2260  
<https://www.mooringrestaurant.com/>

*22 Bowen's Wine Bar & Grille*  
22 Bowens Wharf, Newport, RI 02840  
(401)841-8884  
<https://www.22bowens.com/>

### **Broadway:**

*The Fifth Element*  
111 Broadway, Newport, RI 02840  
(401)679-2552  
<https://www.thefifthri.com/>

*Caleb and Broad*  
162 Broadway, Newport, RI 02840  
(401)619-5955  
<http://www.calebandbroad.com/>

*The Tavern on Broadway*  
16 Broadway, Newport, RI 02840  
(401)619-5675  
<https://www.tavernonbroadway.com/>

**Reservations are recommended.**