

FAQ

Q: What is precision medicine?

A: Precision medicine is health care that is based on you as an individual. It takes into account factors like where you live, what you do, and your family health history. Precision medicine's goal is to be able to tell people the best ways to stay healthy. If someone does get sick, precision medicine may help health care teams find the treatment that will work best.

Q: What health information will I need to provide to join the *All of Us* Research Program?

A: If you decide to join *All of Us*, we will ask you to share different kinds of information. We will ask you basic information like your name and where you live. We will ask you questions about your health, family, home, and work. If you have an electronic health record, we may ask for access. We may ask you to go to a local clinic or drug store for a free appointment with us. At this appointment we would measure your weight, height, hips, and

waist, as well as your blood pressure and heart rate. We might ask you to give samples, like blood or urine at the appointment.

Q: Is participation in the *All of Us* Research Program a one-time or ongoing activity?

A: Our plan is that *All of Us* will last for at least 10 years. We hope you will stay involved over time. If you do, researchers may better understand what causes changes in our health and what we can do about it. If you join, you can withdraw (“quit”) at any time for any reason without penalty.

Q: If I am already enrolled in another study, can I still join *All of Us*?

A: You can join the *All of Us* Research Program even if you are in other health studies. If you are already in a clinical trial, you may want to talk with your healthcare team before joining *All of Us*. *All of Us* is not a clinical trial, so you should still be able to join.

Precision Medicine Initiative, PMI, *All of Us*, the *All of Us* logo, and “The Future of Health Begins With You” are service marks of the U.S. Department of Health and Human Services.

1 (844) 842-2855

joinallofus.org

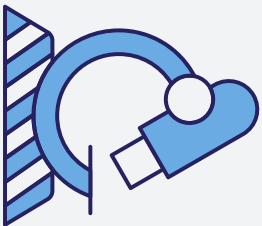
Join today

The
Future of
Health Begins
With You
All of US
RESEARCH PROGRAM

Be one of 1,000,000+ in a better future.

joinallofus.org





What is the *All of Us* Research Program?

The *All of Us* Research Program is a large research program. The goal is to help researchers understand more about why people get sick or stay healthy. If you decide to join *All of Us*, you will be contributing to an effort to improve the health of generations to come. You also may learn about your own health.



Why 1,000,000?

We hope that more than a million people will join *All of Us*. People who join will give us information about their health, habits, and what it's like where they live. By looking for patterns, researchers may learn more about what affects people's health.



Who can join?

Anyone who lives in the United States can join *All of Us*. You do not need to be a U.S. citizen or permanent resident. Right now only people who are 18 or older can join *All of Us*. Children will be able to join in the future.

Why should I join?

If you join, you will be contributing to research that may improve health for everyone. Research may help develop:

- Better tests to see if people are sick or are at risk of getting sick.
- Better mobile apps to encourage healthy habits.
- Better medicine or information about how much of a medicine is right for each person as an individual.

Also, you will be able to see your *All of Us* information, which might be interesting to you. If you choose, you will be able to share your *All of Us* information with your doctor.



How do I join?

All of Us starts in 2017. There are four ways to join:

- Visit the *All of Us* website joinallofus.org.
- Download the *All of Us* app.
- Call the Support Center toll free at 1 (844) 842-2855.
- If you get health care at one of our affiliated Health Provider Organizations, you can join there.

Because *All of Us* is research, you will be asked to complete an informed consent process. This process tells more about what is involved, and the risks and benefits of joining.



Privacy and security

Your privacy is important to us. We will take great care to protect your information. That's why we use the most advanced security systems available.

Please visit

joinallofus.org
for more information.
