



Association for Nursing
Professional Development

Aspire

...TO IMAGINE

Program Brochure

JULY 17–20, 2018

ANNUAL CONVENTION

Disney's Coronado Springs Resort
Lake Buena Vista, FL

Workshops | July 16-17, 2018

...TO IMAGINE *Aspire*

TABLE OF CONTENTS

Featured Speakers.....	3
Program at a Glance.....	4
Pre-Convention Workshops	6
Concurrent Sessions	9
Poster Presentations	15
Event Details	19
Exhibitor and Sponsors.....	20
Registration Form.....	21

CONTACT HOURS

Continuing nursing education contact hours will be awarded for this convention. Please check the ANPD website for further details. Partial credit is awarded for each individual session. Successful completion of a session requires attendance at the session and completion of an online evaluation. For more information regarding contact hours, please contact the ANPD National Office at info@anpd.org or 312-321-5135.

The Association for Nursing Professional Development is accredited as a provider of continuing nursing education by the American Nurses Credentialing Center's Commission on Accreditation.

ASPIRE... TO IMAGINE



Welcome to ANPD's 2018 Annual Convention! What a magical opportunity to have our convention at the happiest place on earth. Last year, a record setting 1,274 nursing professional development (NPD) practitioners came from across the United States, Australia, Canada, Lebanon and Qatar to obtain new knowledge, share best practices and advocate for our NPD specialty. My hopes are that this year's convention will bring even more NPD practitioners to convention to imagine strategies to advance our practice.

On behalf of our planning committee, I am proud to announce that we are offering 12 pre-conference workshops, five general sessions, 60 concurrent sessions, and over 100 posters presented by leaders in our specialty. We received over 400 abstract proposals and selected sensational concurrent and poster sessions for the novice NPD practitioner to the experts in the specialty. Concurrent session tracks include: Leadership, Onboarding/Orientation, Role Development, Research/Evidence-based Practice/Quality Improvement, Education, Competency Management, and Collaborative Partnerships.

My favorite part of convention is the opportunity to reconnect with old friends, colleagues, and experts in the specialty and meet new NPD practitioners. I attended my first convention in 2005; going to convention feels like coming home for me. I always leave feeling energized with so many ideas and resources that I can't wait to implement.

During your free time, don't forget to experience the four theme parks, two water parks, shopping, theaters, shows, fireworks, and all the delightful dining options within your reach at Walt Disney World. Disney's Coronado Springs Resort provides a beautiful escape with pools, spa services, bike riding, and camp fires. This truly is the most magical place on earth.

I look forward to seeing you at convention. In the words of Timon, Pumbaa and Simba, some great Disney characters from the Lion King, "Hakuna Matata!" Join us for no worries for all the days of convention.

Jo-Ann Robinson, DNP, APN-BC, RN-BC, C-OB
2018 ANPD Content Planning Committee Chair

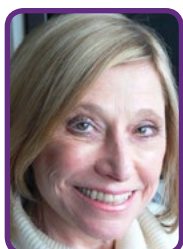
GOALS OF THE 2018 ANPD ANNUAL CONVENTION

- » Develop imaginative nursing professional development (NPD) practitioners who engage in professional development opportunities for the future of healthcare
- » Foster creative techniques to address practice gaps in the interprofessional practice and learning environments to optimize patient-centered care, quality, and patient safety
- » Inspire participants to be visionary thinkers, incorporating best practices, creative strategies and solutions, research evidence, and outcomes measurement into practice
- » Motivate NPD practitioners to act as frontline leaders whose innovative practices and outcomes exceed the expectations of their stakeholders

WHO SHOULD ATTEND?

- » Nursing professional development (NPD) practitioners
- » Nursing leaders
- » Human resource leaders
- » Nurses, faculty or students with a focus on NPD or education
- » Providers of products and services for interprofessional continuing education (IPCE)

FEATURED SPEAKERS



Bette Case Di Leonardi, PhD, RN-BC

Dr. Bette Case Di Leonardi has practiced as an independent NPD consultant since 1993. She publishes and speaks on numerous NPD topics. She serves on the Accreditation Board for Specialty Nursing Certification, the *Journal of Continuing Education in Nursing* editorial board and as a peer reviewer for *Nurse Educator*.



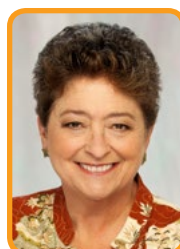
Karen N. Drenkard, PhD, RN, NEA-BC, FAAN

Dr. Karen Drenkard is the Senior Vice President (SVP)/ Chief Clinical Officer and Chief Nurse of the O'Neil Center at GetWellNetwork® Inc. in Bethesda, MD. She is responsible for the clinical direction and brings the voice of nursing to patient engagement and the innovation of technology for nursing practice.

Dr. Drenkard is the past Executive Director at the American Nurses Credentialing Center (ANCC) and the Magnet Recognition Program. She was the recipient of the ANCC President's Award. Prior to that, Dr. Drenkard served for 10 years as the SVP of nursing/chief nurse executive at Inova Health System in Fairfax, VA.

She is currently the President of the Friends of the National Institute for Nursing Research (FNINR); she serves as an editorial advisor to *Journal of Nursing Administration* (JONA) and *Nursing Administration Quarterly* (NAQ). She is a member of the Board of Visitors for the University of Pittsburgh School of Nursing, Indiana University School of Nursing, and is a Board of Trustee member for Anne Arundel Medical Center in Annapolis, MD. She is also an advisory board member of the Watson Caring Science Institute. She is the co-chair of the Institute for Nursing Leadership at the American Academy of Nursing. She is a fellow in the American Academy of Nursing and the National Academies of Practice.

Dr. Drenkard received her doctorate in nursing administration from George Mason University, was a Wharton Nurse Executive Fellow, and a Robert Wood Johnson Executive Nurse Fellow.



Allison Rossett, EdD, CPT

Dr. Allison Rossett, longtime Professor of Educational Technology at San Diego State University, is in the *Training* magazine Human Resources Development (HRD) Hall of Fame, was a member of the American Society for Training and Development (now Association for Talent Development) International Board of Directors, was honored with selection as an International Society for Performance Improvement

Member-for-Life, and more recently with the Thomas Gilbert Award. Recipient of ASTD's recognition for lifelong contributions to workplace learning and performance and designated a LEGEND, Dr. Rossett co-authored *Job Aids and Performance Support: Moving from Knowledge in the Classroom to Knowledge Everywhere* and a recent edition of her book, *First Things Fast*. Dr. Rossett edited the *ASTD E-Learning Handbook: Best Practices, Strategies, and Case Studies for an Emerging Field*. She also completed a white paper for the American Management Association, "Blended Learning Opportunities," and another, on learner engagement, for Adobe Systems. She is the author of four award-winning books, including *Beyond the Podium: Delivering Training and Performance to a Digital World* and *First Things Fast: A Handbook for Performance Analysis*. Prior award-winning books are *Training Needs Assessment*, and *A Handbook of Job Aids*. Some of Dr. Rossett's articles are "Ode to Mobile Performance Support," "Moving Your Class Online," "Confessions of a Web Dropout," and "Training and Organizational Development, Siblings Separated at Birth." She has conducted research and published articles on needs analysis, learner engagement, on-demand learning, and support. Dr. Rossett blogs at www.allisonrossett.com.



Rich Bluni, BSN, RN

Rich Bluni has been with the Studer Group for 10 years, initially as a coach and presently as a speaker and also as Studer Group's Senior Engagement Executive. Mr. Bluni was born in Brooklyn, NY and raised in Miami, FL. Mr. Bluni has been a registered nurse for over 24 years and has worked in adolescent oncology, pediatric intensive care, and trauma intensive care. Mr. Bluni was also a pediatric

flight and transport nurse, a clinical manager of an emergency department and trauma center, and a director of risk management and patient safety. Mr. Bluni has spoken all over the US and Canada at hundreds of hospitals and national healthcare conferences. He is the author of three best-selling books, including *Inspired Nurse*, *Oh No! Not More of That Fluffy Stuff*, and his newest book, *Inspired Nurse Too*. Mr. Bluni also has one of the fastest growing healthcare Facebook pages, "Inspired Nurse." Mr. Bluni loves to share his enthusiasm and passion for healthcare and making a difference with audiences around the country.

PROGRAM AT A GLANCE

MONDAY, JULY 16

8:00 am – 5:00 pm	Nursing Professional Development Certification Preparation Course – Day One
1:00 pm – 5:00 pm	Workshops (W101 – W104)

TUESDAY, JULY 17

7:00 am – 5:00 pm	Poster Set-up
8:00 am – 4:30 pm	Nursing Professional Development Certification Preparation Course – Day Two
8:00 am – 4:30 pm	Professional Development Associate Workshop (W105)
8:00 am – 12:00 pm	Workshops (W106 – W109)
12:00 pm – 12:30 pm	Lunch on own
12:30 pm – 4:30 pm	Workshops (W110 – W112)
12:30 pm – 4:30 pm	Leadership Academy Workshop (invitation only)
4:45 pm – 5:45 pm	Imagination Stations: NPD Speed Networking Event
6:00 pm – 7:30 pm	Welcoming and Opening Remarks
	OPENING SESSION Imagine!!! <i>Bette Case Di Leonardi, PhD, RN-BC</i>
7:30 pm – 9:15 pm	Exhibit Hall Opening Reception
	Vendor Sponsored Presentations 7:45 pm – 8:30 pm Check the onsite program for details

WEDNESDAY, JULY 18

7:00 am – 7:45 am	Affiliate Meeting
8:00 am – 4:30 pm	Poster Viewing
8:00 am – 9:00 am	Concurrent Session I
9:15 am – 10:15 am	Concurrent Session II
10:15 am – 11:00 am	Coffee Break in Exhibit Hall
	Vendor Sponsored Presentations 10:30 am – 10:45 am Check the onsite program for details
11:00 am – 12:30 pm	Awards Presentation
	GENERAL SESSION Show Me the Money: Demonstrating Value of Nursing Professional Development <i>Karen N. Drenkard, PhD, RN, NEA-BC, FAAN</i>
12:30 pm – 1:30 pm	Lunch provided by ANPD in the Exhibit Hall
1:30 pm – 2:30 pm	Concurrent Session III
2:30 pm – 3:30 pm	Coffee Break in Exhibit Hall
	Vendor Sponsored Presentations 2:45 pm – 3:00 pm Check the onsite program for details
3:30 pm – 4:30 pm	Concurrent Session IV
4:30 pm – 6:00 pm	Poster Reception
	Vendor Sponsored Presentations 4:45 pm – 5:30 pm Check the onsite program for details

PROGRAM AT A GLANCE (cont.)

THURSDAY, JULY 19	
7:00 am – 4:30 pm	Poster Viewing
7:00 am – 7:45 am	Getting Involved with ANPD
8:00 am – 9:00 am	Concurrent Session V
9:00 am – 10:15 am	Coffee Break in Exhibit Hall
	Vendor Sponsored Presentations 9:15 am – 10:00 am <i>Check the onsite program for details</i>
10:15 am – 11:15 am	GENERAL SESSION Beyond Kirkpatrick: Targeted Strategies for Evaluating Programs and People <i>Allison Rossett, EdD, CPT</i>
11:30 am – 12:30 pm	Concurrent Session VI
12:30 pm – 1:30 pm	Lunch provided by ANPD in the Exhibit Hall
1:30 pm – 2:00 pm	Passport to Prizes in Exhibit Hall
2:15 pm – 3:15 pm	Concurrent Session VII
3:30 pm – 4:30 pm	GENERAL SESSION The Future of Continuing Education: Outcomes-based Professional Development <i>Jean Shinnors, PhD, RN-BC; Jennifer Graebe, MSN, RN, NEA-BC; Pam Dickerson, PhD, RN-BC, FAAN; Robert Hess, PhD, RN, FAAN; Debra Hastings PhD, RN-BC, CNORE</i>
4:30 pm – 7:00 pm	Poster Take Down
4:45 pm – 5:45 pm	Star Search

FRIDAY, JULY 20	
8:00 am – 9:00 am	Concurrent Session VIII
9:15 am – 10:15 am	Concurrent Session IX
10:15 am – 11:00 am	Networking Breakfast
11:00 am – 12:00 pm	Concurrent Session X
12:15 pm – 1:30 pm	Star Search and Poster Awards Presentation
	CLOSING SESSION Inspired Nurse <i>Rich Bluni, BSN, RN</i>

ANPD CONTENT PLANNING COMMITTEE

Chair: Jo-Ann Robinson, DNP, APN-BC, RN-BC, C-OB

Chair-elect: Sheila St. Cyr, MS, RN-BC

Richard Brody, MSN, RN-BC, PCCN

Lori Frahm, MS, RN-BC

Deborah Jenkins, MSN, RN-BC, CCRN

Heather Malcolm, MSN, RN-BC

Laura Petri, PhD, RN-BC

Michael Polacek, MSN, RN-BC

Linda Rus, MSN, RN-BC

Robyn Setter, MS, RN-BC

Judy Timmons, MSN, APRN-CNS, RN-BC

Valerie Ventura, MSN/Ed, RN-BC

Kamilah Williams, PhD, MSN, MHA, RN-BC

Mary Harper, PhD, RN-BC
(Lead Nurse Planner)

Disclosure: Planners disclose no conflict of interest relative to this educational activity.

PRE-CONVENTION WORKSHOPS

Nursing Professional Development Certification Preparation Course

Monday, July 16 | 8:00 am – 5:00 pm

Tuesday, July 17 | 8:00 am – 4:30 pm

Greg Durkin, MEd, BSN, RN-BC

This 2-day, 16 contact hour Nursing Professional Development (NPD) Certification Preparation Course prepares participants for the American Nurses Credentialing Center's (ANCC) NPD exam. The course is not only beneficial for NPD practitioners preparing for the certification exam, but is also a great introduction to nursing professional development for those new to the specialty.

W101: Getting Started in Nursing Professional Development: Focus on Learning Facilitator

Novice Level

Monday, July 16 | 1:00 pm – 5:00 pm

Bette Case Di Leonardi, PhD, RN-BC

This pre-conference refers to *Nursing Professional Development: Scope and Standards of Practice*, 3rd edition (Harper & Maloney, 2016), and focuses on the NPD practitioner's learning facilitator role. The workshop applies the ADDIE model to the activities of the NPD practitioner in: analyzing data to identify learning needs and developing learning outcomes; designing and developing learning activities and needed resources; and implementing and evaluating learning activities. Participants have opportunities to share experiences and practice skills involved in each phase of ADDIE.

W102: Orchestrating Your Career: From Composition to Performance

Expert Level

Monday, July 16 | 1:00 pm – 5:00 pm

Dora Bradley, PhD, RN-BC, FAAN

Sharon Gunn, DNP, RN, ACNS-BC, CCRN-K

Looking for that next career step? Successfully orchestrating your career is a lifelong process of assessing, developing and executing goals, composing key milestones, and harmonizing performance. This application oriented workshop focuses on participants using actual and possible resources to create harmony between career vision, expertise, and action. Learn how to select and design the best options for "tooting your own horn."

W103: Going Small for Big Results: Applying Microlearning Strategies as a Training Solution

Competent Level

Monday, July 16 | 1:00 pm – 5:00 pm

David Campbell, MSN, RN-BC

Kathy Crawford, MS

Microlearning is more than the latest buzz word in training. The microlearning concept incorporates proven learning theories, such as spaced learning and refresher training, in a 21st-century package. In this workshop, learn how to implement microlearning strategies in a healthcare setting, including best practices for consulting, content development, and communication. Throughout the workshop, participants have opportunities to practice what they learn and receive feedback. Participants also have the opportunity to see demonstrations of specific tools they can use to develop microlearning quickly and easily.

W104: Aspiring to Better Communication through Graphic Design

Competent / Expert Level

Monday, July 16 | 1:00 pm – 5:00 pm

Rob Patton, MSN, RN

From fliers to newsletters to presentations to web sites, NPD practitioners are often asked to do graphic design jobs for which they have never been formally trained. This workshop provides an introduction to basic graphic design principles, including layout and typography, and provides practical tips, tricks, and tools for working with images and designing common print tasks and digital platforms. This workshop does not prepare you for a graphic design job at an international fashion magazine, but it prepares you to make better fliers and handouts, and take your ideas from the printed page to the electronic screen.

PRE-CONVENTION WORKSHOPS (cont.)

W105: Aspire to Imagine – Your Role as a Professional Development Associate

Novice Level

Tuesday, July 17 | 8:00 am – 4:30 pm

Pam Dickerson, PhD, RN-BC, FAAN

Caroline Baughman, BS

Jillian Russell, MSN, RN-BC

Tina Spagnola, MSN, RN-BC, NE-BC

Chris Wilson, MSN, RN-BC

Explore your role as a professional development associate! Learn how building your knowledge, skills, and competence can support healthcare facilities, organizations, and associations in their quest for excellence in professional development. ANPD defines a professional development associate as an individual who contributes to the overall functioning of a continuing education/professional development department in a substantive, measurable way. We'll build that substance by using competencies related to communication, coordination, intra- and interprofessional collaboration, problem-solving, activity development and implementation, record maintenance, adhering to regulatory and accreditation standards, and much, much more. Professional development practitioners interested in developing or expanding this role in your organizations are welcome to attend, as well.

W106: Writing for Publication

Competent / Expert Level

Tuesday, July 17 | 8:00 am – 12:00 pm

Kari Schmidt, MS, RN-BC, ACC

Susan Bindon, DNP, RN-BC, CNE

This workshop, one of the most highly rated sessions in past conventions, is for those interested in getting started or progressing as published authors. It provides publication tips, encouragement, and practice time for novice and/or yet-to-be published authors. Topics include writing in a professional versus academic style, choosing relevant topics, and targeting a specific reading audience. Participants learn about the peer-review publication process, author guidelines, and editor expectations. Learners also have the opportunity to share their manuscript ideas and receive feedback from others.

W107: The Top 10 Creative Teaching Strategies for 2018: Be Wise to What's Up and Coming

Novice / Competent Level

Tuesday, July 17 | 8:00 am – 12:00 pm

Michele Deck, MEd, BSN, RN, LCCE, FACCE

Let's face it, some nursing topics are harder to teach than others. This hands-on session explores the top ten challenging topics, including some essential nursing skills. Discover innovative and creative ways to teach that inspire deeper levels of thinking and engagement for your learners. Experience several different types of technology to incorporate into your teaching practice.

W108: Starting, Growing, and Maintaining an ANPD Affiliate: Leading at the Local/Regional Level

Competent Level

Tuesday, July 17 | 8:00 am – 12:00 pm

Chris Whitcher, EdD, MBA, BSN, RN-BC, OCN

Kelly La Frenz, MSN, RN-BC

Christi Bowe, MSN, RN-BC, NP-C

Danya Garner, MSN, RN-BC, OCN, CCRN

This presentation applies an interactive group process to share a toolkit generated by the successful ANPD Houston Affiliate to help guide NPD professionals who wish to start or revitalize their ANPD affiliate/local organization. A component of the toolkit, an operations manual, serves to direct affiliate board members in a way that helps define, clarify, and empower each leader to serve the needs of their community. By the end of the session, participants have an action plan to start, lead and grow their affiliate with a blueprint of operational guidelines and practices.

W109: Imagine Success: Assessment and Interventions for the Struggling Learner

Competent Level

Tuesday, July 17 | 8:00 am – 12:00 pm

Deborah Laughlin, MSN, RN-BC

Using video vignettes and small group work, NPD practitioners learn to assess and develop strategies for staff struggling to be competent and safe practitioners.

W110: ROI – Back by Popular Demand: Economic Impact of Professional Development Activities

Expert Level

Tuesday, July 17 | 12:30 pm – 4:30 pm

Cathleen Opperman, DNP, RN, NEA-BC, CPN

Sue Johnson, PhD, RN-BC, NE-BC

Judy Bowling, PhD, MSN, MHA, RN-BC

Debra Liebig, MLA, BSN, RN-BC

Professional development is part of the solution for any practice problem or error, yet it is often minimally funded or even cut when budgets are tight. What is the return on investment (ROI) for professional development activities? Requested to be repeated by last year's convention participants, this workshop uses examples to teach how to calculate economic impact for various types of programs. Small group exercises and lively discussion demonstrate how you can incorporate financial impact evaluation into the planning and coordination of learning activities. For maximum benefit, bring a tablet or calculator to the workshop.

PRE-CONVENTION WORKSHOPS (*cont.*)

W111: Fostering Preceptor Development through Innovative Teaching Strategies

Novice/Competent Level

Tuesday, July 17 | 12:30 pm – 4:30 pm

Ellen Joswiak, DNP, RN-BC

Dawn Nelson, MS, RN-BC

This workshop is for those interested in learning about role development for preceptors. Topics include selection criteria for preceptors, orientation to the role of a preceptor, and equipping the preceptor to use active learning strategies that enhance the critical thinking and clinical judgment skills of new nurses. Participants actively engage in developing skills of higher order questioning and reflective practice. The learner will come away from this workshop with practical methods to improve preceptor development within their own organization. This workshop is interactive with time to create tools for preceptor development.

W112: The Ultimate Workshop on Competency Assessment

Competent Level

Tuesday, July 17 | 12:30 pm – 4:30 pm

Donna Wright, MS, RN

This workshop explores the elements needed to create a successful competency program. Learn many creative strategies for the competency process and creative ways to verify competencies in all departments. Explore ways to operationalize this process every day and ensure compliance. Join us for a humorous look at how to make all this happen and how to create a system that really works. You won't believe how easy it can be.

ANPD Leadership Academy Introductory Workshop

Competent Level

Tuesday, July 17 | 12:30 pm – 4:30 pm

Chris Wilson, MSN, RN-BC,

Tina Spagnola, MSN, RN-BC, NE-BC

This workshop, open only to 2018-2019 Leadership Academy participants, kicks off the 2018-2019 Leadership Academy cohort.

...TO IMAGINE *Aspire*

SESSIONS

OPENING SESSION

Tuesday, July 17 | 6:00 pm – 7:30 pm

G101: Imagine!!!

Bette Case Di Leonardi, PhD, RN-BC

Imagine!!! looks boldly at our NPD future. Recalling the well-known quote, "The past is history, the future is a mystery, today is a gift, that's why we call it the present," Imagine!!! visits the past, envisions the future, and suggests actions in our present to take us to that future. Referring to another classic quote, "The future is already here, it's just not equally distributed," Imagine!!! presents video examples of NPD practice in which the future has arrived. Participants have the opportunity to imagine and share their own paths to the future.

CONCURRENT SESSION I

Wednesday, July 19 | 8:00 am – 9:00 am

S101: Care of the Pediatric Psychiatric Patient in a Med-surg World

Competent | Collaborative Partnerships

Jaime Choate, BSN, RN

Lindsay Gregory, MSN, RN, CPN

Learn how one large urban hospital created an innovative, blended nurse education program to meet the unique needs of the pediatric self-destructive/suicidal patient.

S102: Nursing & Interprofessional Education Refinement and Sustainability

Competent | Competency Management

Jill Marie Stonesifer, BSN, RN-BC, CPN

Angelina Rangel, MSN, RN-BC, CCRN

How can education target nursing and interprofessional learning needs? Innovative, collaborative processes refine competence attainment for incumbent staff and new hires.

S103: Brain-based Learning: Imagine the Possibilities

Competent | Education

Rosalind Sloan, MAEd, BSN, RN-BC

Dee Eldardiri, MS, RN-BC, CMSRN, RS

Engaging learners is both art and science. Discover how brain-based learning can be used to make your online educational offerings appealing and effective.

S104: Developing Novice Nurse Leaders: Like Dumbo, Don't Just Fly, Soar!

Novice | Leadership

Madeline Gehrig, BSN, RN, CPEN

As a case study review, nursing professional development practitioners learn strategies for developing the novice nurse leader using an evidence-based leadership model.

S105: Imagine New Graduate Nurses in the Ambulatory Setting

Competent | Onboarding and Orientation

Amanda Moorer, MSN, RN-BC, CCRN-K

Laurie Kirkley, MS, RN, OCN

Discover the benefits and learn the process for expanding a nurse residency program to the ambulatory setting.

S106: Imagine Success: Measuring NPD Economic Impact

Expert | Leadership

Cathleen Opperman, DNP, RN, NEA-BC, CPN

Sue Johnson, PhD, RN-BC, NE-BC

Judy Bowling, PhD, MHA, RN-BC

Debra Liebig, MLA, BSN, RN-BC

This session for experienced NPD practitioners discusses how to use cost per participant, benefit/cost ratios, and return on investment (ROI) to guide decision making regarding professional development activities.

CONCURRENT SESSION II

Wednesday, July 18 | 9:15 am – 10:15 am

S107: Strategizing Implementation of a Collaborative Clinical Learning Council

Competent | Collaborative Partnerships

Lisa Hollingshead, MA, BSN, RN

Linda Knorr, MSN, RN

Susilla Cory, BSN, RN

Rhonda Walmer, BA

Consider a collaborative interprofessional council to strategize and manage the flow and implementation of your corporate clinical learning initiatives.

S108: Developing a Transgender Affirmation Curriculum: Caterpillar to Butterfly

Competent | Education

Rose Otero, MSN, RN-BC

Joy McIlvaine, MS, RN-BC, ANP-BC, LAc

Margaret Rose Morales, MA, RN, ACNS, BC, NEA-BC

Judith K. Jones, MSN, RN, CNM

Laura O'Brien, MA, RN, CCRN

Mary Ellen Cafiero, MA, RN, CCRN, GNP

Explore a newly developed transgender affirmation curriculum for patient care. Clinical pathways for multiple types of gender reassignment procedures are discussed.

S109: Qualified Observers: Ensure a Consistent Electronic Competency Process

Competent | Competency Management

Julie O'Neal, MSN, RN-BC, CEN

Development of the qualified observer role and electronic competency documentation leads to a streamlined process and consistent approach to competency management.

S110: Experience the Magic! Engaging Learners through Gamification and Technology

Expert | Onboarding and Orientation

Renee M. Davis, MSN, RN-BC

Melinda Petrizzo, MSN, RN-BC

Imagine fully engaged participants in orientation! Explore the integration of online gamification in a centralized, interprofessional, clinical orientation program.

S111: Measurement of Clinical Reasoning in a Statewide Student Intern Program

Competent | Research/EBP/QI

Amy Catherine Yakos, MSN, RN-BC, CEN

Tiffanie Maye Nabinger, MSN, RN-BC, CPN

T. DiAnne Lynch, MSN, RN-BC

Jennifer Harley, MSN, RN-BC

This session outlines an innovative method for developing a program that bridges the gap between academia and the practice environment.

SESSIONS (cont.)

S112: Leadership Academy Panel

Expert | Leadership

Beth Kilroyer DNP, RN-BC (Moderator)

Participants and mentors who participated in the inaugural NPD Leadership Academy share their experiences and program outcomes.

GENERAL SESSION

Wednesday, July 18 | 11:00 am – 12:30 pm

G102: Show Me the Money: Demonstrating Value of Nursing Professional Development

Karen N. Drenkard, PhD, RN, NEA-BC, FAAN

All too often, continuing education and professional development activities are considered cost center expenses, rather than an investment. This interactive session shares tips on demonstrating value and return on investment of nursing professional development activities. Information about return on investment, value on investment and how to create a business case for NPD is shared with opportunities to interact and exchange ideas.

CONCURRENT SESSION III

Wednesday, July 18 | 1:30 pm – 2:30 pm

S113: Reigniting the Spirit for Perioperative Nursing

Expert | Collaborative Partnerships

*Althea Mighten, EdD, DNP, APRN, BC
Maria Christina Uy, MSN, RN-BC, CNOR*

Learn about an innovative academic/clinical program that has captivated the interest of graduating nursing students.

S114: The Educator's Treasure Chest: Pearls and Other Jewels to Assess Competency

Competent | Competency Management

Dawn Whiteside, MSN, RN, CNOR, RNFA

Arrgh you ready to transform your box of tools into a treasure chest of ideas? The pirate's booty has 11 jewels of wisdom to use for thinking outside the box. Each jewel represents a competency verification tool. Engage staff to participate in important content review and verifying competence. We apply the four C's — carrot, clarity, color, and cut — to the competency assessment process.

S115: Imagining a Better Education Request Process

Competent | Education

*Lisa Smotrich, BSN, CCRN
Andrea Ritchey, BSN, CCRN*

Tired of teaching the same thing over and over? A formal education request process can leverage your skill and knowledge to create effective, lasting educational initiatives.

S116: Up Your Game: Apply PDSA to Rapidly Improve Programs

Competent | Research/EBP/QI

*Amanda Rossley, MSN, RN-BC
Rebecca Monteau, MSN, RN-BC
Shawn Gallup, MSN, RN*

Leverage technology and data through Plan-Do-Study-Act (PDSA) to improve programs through the lens of a critical care orientation redesign.

S117: To Infinity and Beyond: Successful Onboarding of New RN Graduates

Competent | Onboarding and Orientation

*Jodi Johnson, BSN, RN
Lori Forneris, MSN, RN*

Learn how an innovative journey leverages socialization and integration as a successful recruitment and retention tools resulting in saved resources and improved efficiencies in the onboarding process.

S118: Energizing Your Practice: Role Modeling Resilience

Expert | Leadership

Kari Schmidt, MS, RN-BC, ACC

Living and role modeling resilience and life/work balance are essential for NPD practitioners in environments of complex demands and competing priorities.

CONCURRENT SESSION IV

Wednesday, July 18 | 3:30 pm – 4:30 pm

S119: Interprofessional Simulation from the Patient's Point of View

Competent | Collaborative Partnerships

*Mary E. Holtschneider, MEd, MPA, BSN, RN-BC,
NREMT-P, CPLP*

Chan W. Park, MD, FAAEM

This session focuses on ways to design and deliver targeted and highly relevant interprofessional simulations, all with the goal of improving patient outcomes.

S120: Implementing and Evaluating Wright's Competency Model in Seven Professions

Expert | Competency Management

Greg Durkin, MEd, BSN, RN-BC

Wright's competency model is a lot of work to implement, now we need to evaluate its impact! Come hear how we did it.

S121: Identifying Nursing Professional Development Metrics

Competent | Leadership

Tina Dieckhaus, MSN, RN-BC, NE-BC, CPHIMS, FHIMSS

Can't measure it, can't manage it. This session details a nursing professional development team's process of identifying metrics to describe and define the work of the team.

S122: Imagine Flipping the Classroom to Improve Outcomes

Novice | Education

Stacey L. Chomic, MSN, RN-BC

Looking for an effective teaching strategy that reduces education costs, uses resources responsibly, improves outcomes, and is aligned with adult learning principles? Consider "flipping the classroom."

SESSIONS (cont.)

S123: Hitting the Reset Button on Student Nurse Clinicals

Competent | Education

Barbara S. Ehrhardt, MSN, RN, GCNS
Hephzibah Sophie Edwin, MSN, RN-BC
Tina Cheek, MSN, RN-BC
Laura Walker, MSN, RN-BC, CNE, CCRN

Four poster presenters provide a rapid overview of their poster content. The following posters are presented:

- Utilizing Blended Learning Methodologies for Cardiac Dysrhythmia Education
- Increasing Nurse Certification Using Interactive Teaching Strategies
- An Interprofessional Journey
- Aspire to Create the Ideal Unit-based Skin Champion

S124: Onward! Forecasting the Future of NPD

Expert | Leadership

Susan Bindon, DNP, RN-BC, CNE

Bring your observations, hunches, intuitions, maybe even your crystal ball to this session! Join your colleagues as we look ahead to the future of NPD from a leadership perspective. This session examines trends in evidence and changes in technology, education, and the care environment. Participants discuss how these and other contextual elements will inform our practice, our preparation, and our overall specialty in the coming years.

CONCURRENT SESSION V

Thursday, July 19 | 8:00 am – 9:00 am

S201: Bridging Personal and Professional Experiences to Enhance Learning

Novice | Collaborative Partnerships

Jennifer Lynn Simonetti, MSN, RN, CPN
Sharon Goodman, MA, BSN, RN-BC, CPNP

With the increase of millennials in the workplace, the NPD practitioner is challenged to make education personal and relatable to ensure success of new initiatives and practice changes. Breaking uncomfortable barriers to promote a safe place for learning and growth, the learner is provided an eye mask and asked to embark on a journey through the eyes of the patients served.

S202: Imagine! Blended Learning Best Practices for Novice Nurse Orientation

Competent | Onboarding and Orientation

Julie Miller, BSN, RN, CCRN-K

Best practices are presented for successful orientation of acute and critical care nurses using a blended approach combining e-learning, mentoring, and classroom activities.

S203: Reimagining Social Media in NPD Practice: Successes, Trials, and Tribulations

Competent | Education

Dennis P. Doherty, MSN, RN-BC

Social media can be used throughout NPD practice. Come learn strategies to leverage social media across NPD roles along with facilitators and barriers to success.

S204: Achieving Desired Outcomes that Meet Strategic Organizational Goals

Competent | Leadership

Mary McAdams, MEd, RN-BC
Sheila B. Golden-Baker, MS, RN-BC

This session describes strategies to identify and achieve strategic organizational outcomes through nursing professional development initiatives.

S205: Summer Nurse Interns: Collaborative and Creative Onboarding

Competent | Onboarding and Orientation

Denise M. Petras, DNP, RN-BC

Explore an opportunity to develop a creative onboarding experience for Summer Nurse Interns (SNIs).

S206: Secure Your Mask before Helping Others: Easing Transition into NPD Practice

Expert | Role Development

Marta Devolt, MN, RN-BC, RNC-OB
Elaina Robinson, MSN, RN, CEN
Julia Parazin, BSN, RN, CNOR

While NPD practitioners ease transition into practice for new nurses, they may lack support during their own role transition. Examine a framework for NPD practitioner onboarding.

GENERAL SESSION

Thursday, July 19 | 10:15 am – 11:15 am

G103: Beyond Kirkpatrick: Targeted Strategies for Evaluating Programs and People

Allison Rossett, EdD, CPT

Kirkpatrick conceived his four levels of evaluation in 1950. 1950! Since then, we have computers everywhere and mobile devices on our person. The shape of learning has changed, maybe not as much as we might hope, but it has changed with more to come. When honest, we have to admit that there is dissatisfaction with how we measure, how much we measure, and how much insight the data affords us. Just imagine: How can we get a better fix on the work that we are doing and the progress our people are making?

CONCURRENT SESSION VI

Thursday, July 19 | 11:30 am – 12:30 pm

S207: Combating Disruptive Behavior: What's the Drill?

Competent | Collaborative Partnerships

Roberta Szumski, MSN, RN-BC

This session describes one pediatric hospital's journey to promote interprofessional awareness and skill acquisition in dealing with disruptive behaviors.

S208: A Team-building Resiliency Retreat to Reimagine a Focus on Nurses

Competent | Education

Kelly Rothman, MS, RN, CPN

A compelling call to action with an evidence-based and well-developed plan to deliver resiliency, wellness, and team-building education for nurses with unparalleled outcomes.

S209: Can You Imagine the Possibilities? The Restructure of a Nursing Specialty

Expert | Leadership

Lisa M. Langdale, MSN, RN-BC

Imagine the successful restructure of NPD practitioner roles to align with the 2016 *Nursing Professional Development: Scope & Standards of Practice* and meet your hospital's needs.

SESSIONS (cont.)

S210: Standardized Debriefing Methods: Shifting Focus from 'Me' to 'Patient'

Competent | Role Development

Michele L. Parsons, MSN/Ed, RN-BC, CHSE
Lisa McDowell, MSN, MEd, RN-BC, CHSE

Use simulation to shift new nurses' focus from individual performance and grades to patient-centered outcomes, safety, satisfaction, and team dynamics in a hospital setting.

S211: Frozen Orientation Processes? Discover a Whole New World of Orientation

Competent | Onboarding and Orientation

Dana Jackson Nichols, MSN, RN
Amy Milner, MSN, RN-BC
Makia Cade, MSN, RN, OCN

This session describes ways nursing professional development practitioners can "let go" of traditional orientation/onboarding processes and discover a "Whole New World" of orientation.

S212: Leading from Where You Are

Expert | Leadership

Dora Bradley, PhD, RN-BC, FAAN

Leadership is more about choice and less about the position you are in. This session assists NPD practitioners in non-line authority positions to develop a new perspective of their power and influence as learning leaders.

CONCURRENT SESSION VII

Thursday, July 19 | 2:15 pm – 3:15 pm

S213: Imagine, Aspire, Create: Relational Coordination Theory Nurse Residency

Expert | Collaborative Partnerships

Cheryl Miller, MSN, RN-BC

A nurse residency program imagined, aspired, and created with relational coordination theory principles and practices in mind.

S214: In-situ Simulation Increases Confidence in Recognition of Patient Decline

Competent | Education

Marie Elizabeth Wolfer, MSN, RN, CCRN
Julie Lynn Juno-LaPan, MS, RN, CNML
Diane M. Wyse, MSN, RN-BC

Overview of in-situ simulation program, strategies to design an in-situ simulation activity, benefits and barriers in education implementation, and review of evaluation process.

S215: Safety Violence Risk Assessment Training for a Pediatric Hospital

Novice | Research/EBP/QI

Amanda Hellner, MSN, RN, CPN
Robin Ritola, BSN, RN, CPEN, CHEP

Participants experience simulation training coupled with the Standardized Violence Risk Assessment tools aimed at increasing hospital staff awareness of workplace violence.

S216: A Tale as Old as Time: The Magic of Orientation Redesign

Competent | Onboarding and Orientation

Lori Perlstein, DNP, RN-BC, NEA-BC
Diana Alemar, MSN, RN-BC, CNL
Monique Zayas, MSN, RN-BC, CPNP
Alycia Jarvis, DNP, RN-BC
Warly Remegio, MS, RN-BC, NEA-BC, CCRN-CSC

Using the appreciative inquiry model, a team of 40 educators envisioned the possibilities to redesign a streamlined and standardized orientation curriculum and onboarding competency process.

S217: Journal Clubs as a Key to Developing NPD Practitioners' Evidence-based Practice Skills

Expert | Role Development

Katherine Parker, MEd, BS, RN-BC
W. Walter Lewanowicz, MN, RN-BC

Journal clubs are an effective method to develop evidence-based practice (EBP) skill sets in NPD practitioners charged with developing an EBP environment.

S218: Leaders of Tomorrow: Preparing Nurses to be Effective Charge Nurses

Competent | Role Development

Anne Katherine Reynolds, MS, RN

Provide an interactive learning session to prepare nurses to be frontline leaders.

GENERAL SESSION

Thursday, July 19 | 3:30 pm – 4:45 pm

G104: The Future of Continuing Education: Outcomes-based Professional Development

Jean Shinnors, PhD, RN-BC
Jennifer Graebe, MSN, RN, NEA-BC
Pam Dickerson, PhD, RN-BC, FAAN
Robert Hess, PhD, RN, FAAN
Debra Hastings, PhD, RN-BC, CNOR(E)

This session provides process information and impressive data from an American Nurses Credentialing Center pilot project to award continuing education credit based on outcomes rather than time.

CONCURRENT SESSION VIII

Friday, July 20 | 8:00 am – 9:00 am

S301: Maximizing Interprofessional Innovation through Combined Evaluations

Expert | Collaborative Partnerships

Amanda Kay Garey, MSN, RN-BC, RNC-OB, C-EFM

Imagine one evaluation for multiple disciplines. Improve your organizational quality initiatives through streamlined reporting to produce meaningful summative evaluations.

S302: Reenergize the Experienced Bedside Nurse? Challenge Accepted!

Competent | Education

Patricia A. Dlouhy, MSN/Ed, RN-BC, CEN
Lora Laszlo, BSN, RN, CEN, CPEN
Maria Roznik, BSN, RN, CEN
Emily Zachman, BSN, RN

Caution: This course contains innovative teaching and learning strategies that may intrigue your learners to want to learn and even ask for more!

SESSIONS (cont.)

S303: Boost Methodology and Retention: A Simulated Patient Sepsis Scenario

Competent | Research/EBP/QI

Jessica M. Phillips, MSN, MS, RN-BC
Jill Scherrey, MSN, MS, RN-BC
Kathleen Feldman, MSN, RN

As part of system-wide sepsis education, an evidence-based sepsis video was developed by three system-level nursing professional development practitioners. The purpose of this study was to evaluate the effectiveness of boost methodology on nurse retention of sepsis related knowledge.

S304: How Far Will You Go? Creation of a Webinar Series for Distance Development

Competent | Role Development

Lauren E. Ivanhoe, MSN, RN-BC, CEN

Create an innovative approach for continuing nursing education through a webinar platform to develop learners across a hospital system and beyond.

S305: Transforming Nursing Orientation: Promoting Clinical Judgment & Safety

Competent | Onboarding and Orientation

Carolyn Poirier MSN, RN-BC
Lynn Stapleton, MN, RN-BC
Lauri Ledbetter, MSN, RN-BC, CNE, CAPA

Imagine RN orientees teaching each other how to prevent errors and promote safe patient care! Carefully guided nursing orientation skills stations bring this to life!

S306: Aspire To Leadership

Competent | Role Development

Jean Bulmer, DNP, RN-BC

This session describes our succession planning process and how we developed a pool of aspiring leaders using two types of leadership fellowships.

CONCURRENT SESSION IX

Friday, July 20 | 9:15 am – 10:15 am

S307: Transforming LMS Relevance Linked to Staff Satisfaction and Return on Investment

Competent | Collaborative Partnerships

Debra A. Lohmeyer, MSN, RN-BC, CNOR

The learning management system (LMS) needs a content review! How 4-step problem solving used collaborative partnerships to improve staff satisfaction and save money.

S308: Battling Substance Use Disorder — The Silent Epidemic in Nursing

Competent | Education

Sheila St. Cyr, MS, RN-BC

Imagine that 1 in 10 nurses abuses drugs or alcohol. This session provides NPD practitioners with the tools to develop education programs to battle the silent epidemic.

S309: Individualizing Orientation: Implementation of an Orientation Record

Competent | Onboarding and Orientation

Alissa Zimmerman, MSN, RN-BC

During this session, tools are shared to help design an orientation record that empowers orientees to acquire the desired knowledge and skills at a pace that honors their previous experience in less time than before!

S310: Animating NPD's Scope and Standards: Generalist and Specialist Roles

Competent | Role Development

Christopher Steven Hairfield, MSN, RN-BC, CMSRN

NPD's 2016 Scope and Standards were operationalized by a nursing professional development department. Follow the journey from role delineation to implementation.

S311: Meeting the Needs of Night Nurses with a Night Shift Nurse Educator

Competent | Role Development

Tanya Carmichael, MSN, RN, RNC-OB
Sara Cohen, MSN, RN, RNC-OB

To support the professional development and educational needs of night shift nurses, a Night Shift Clinical Nurse Education Specialist role was created using the Nursing Professional Development Practice Model.

S312: The Power of Reflective Practice in Nursing Professional Development

Expert | Role Development

Kari Schmidt, MS, RN-BC, ACC

Engaging in and role modeling reflective practice is essential for NPD practitioners. This session features thought-provoking approaches to reflective practice.

CONCURRENT SESSION X

Friday, July 20 | 11:00 am – 12:00 pm

S313: What it Takes and What it Means to be a Joint Accredited™ Provider

Expert | Collaborative Partnerships

Sue Gaard, MS, RN
Tracy Mrochek, MPA, RN

This session describes how an interprofessional partnership achieved jointly accredited provider status, and is transforming continuing professional education.

S314: Communication Nightmares: Imagine...Bringing it to Life in the Simulation Lab

Competent | Role Development

Kelsey Hanson, BSN, RN

Nurses experience several live, difficult communication scenarios that facilitate discussion around conflict resolution and improvement of communication skills.

S315: Promoting Learner Engagement Using Active Instructional Strategies

Novice | Education

Katherine M. Cvach, MS, RNC-OB/EFM

Create an active, relevant learning environment that captures the interest of your class participants and promotes retention of knowledge.

S316: Fireside Chat: A Reflective Group Journey to Improve Graduate Nurse Job Satisfaction *2017 Star Search Winner*

Novice | Onboarding and Orientation

Megnon Stewart, MSN, RN

This session discusses the use of a reflective group process known as "Fireside Chats" to improve job satisfaction and retention in new graduate nurses.

SESSIONS (cont.)

S317: To Infinity and Beyond: Taking Nursing Competency to the Next Level

Competent | *Collaborative Partnerships*

*Lisa B. Chung, DNP, RN-BC
Janet Geskie, MS, RN-BC
Evangeline Estrella, MSN, RN, CCRN*

Use frontline staff, an interprofessional team, and gaming to score big with nursing competency management. This session describes the processes and methodology used to incorporate multiple modalities to manage nursing competencies.

S318: Orienting with a Tiered Skills Acquisition Model: Impact and Outcomes

Competent | *Onboarding and Orientation*

*Dawn M. Nelson, MS, RN-BC
M. Ellen Joswiak, DNP, RN-BC*

This session equips learners to design, implement, and evaluate outcomes for an individualized orientation focused on “tiers” of skill acquisition.

CLOSING SESSION

Friday, July 20 | 12:15 pm – 1:30 pm

G105: Inspired Nurse

Rich Bluni, BSN, RN

Healthcare, and nursing in particular, is one of the few professions that affords one the opportunity to impact lives on such a profound level, not only physically but emotionally and spiritually as well. The same holds true for the nursing professional development specialty. Yet the same qualities that make NPD so deeply rewarding can also make it a challenge for us to sustain our energy and passion over time. The “Inspired Nurse” presentation helps us maintain and recapture those elusive qualities. Those of us who call healthcare our life’s work must also take care of ourselves in order to be able to do the challenging physical, emotional and intellectual work that it takes to serve others.

POSTER PRESENTATIONS

COLLABORATIVE PARTNERSHIPS

P101 Strategic Steps to Building Partnerships: Collaboration Makes the Grade

Crissy Womble, MSN, RN-BC

P102 Poof! Making Magical Collaborative Partnerships Happen

Cori Lester, MSN, RN-BC, CVRN
Lisa Lehner, MSN, RN, CNOR

P103 Imagine a World of Interprofessional Collaboration for Mock Code Success

Bryna Rickett, MSN, RN-BC, CPN

P104 Creative Use of Education Service Lines for Winning Outcomes

Constance C. McCarter, MSN, RN-BC, CNRN

P105 Self-care at Work: All You Need are Strategies, Permission and Pixie Dust

Katherine Czyzewski, LCSW, SEP
Laura Proctor, MS, RN-BC

P106 Multidisciplinary Simulations Improve Nursing Satisfaction and Teamwork

Gillian Kurtz, MSN, RNC-NIC
Nicole D'Onofrio, MSN, RN

P107 Essential Strategies to Address the Impending Nursing Shortage

Katrina Kelley, MSN, MHA, RN, CEN

P108 Hitting the Reset Button on Student Nurse Clinicals

Marilyn Cardia, MSN, RN

P109 Building Confidence During a Rapid Response or Code

Michelle Cavuoto, MS, RN, OCN

P110 An Interprofessional Journey

Tina W. Cheek, BSN, RN

P111 Are you Ready? NPD Role in Serious Communicable Disease Preparedness

Jennifer Forman, MSN, RN-BC, CNML
Sydney Michele Sims, MSN, RN, PCCN
Amy Richardson, MSN, RN

P112 Delivery in the Emergency Room: It's Not Just About the Baby

Julie Banco, BSN, RN, CPEN
Andrea Elmore, MS, RNC-OB, C-EFM
Jana Strangfeld, BSN, RN

P113 Imagine the Role of Education in Creating & Sustaining a Culture of Safety

Lisa Baske, MS, RN-BC
Susan B. Clarke, MS, RNC-NIC, RN-BC, CNS
Nicki Shonka, MS, RN-BC, CPN

P114 The New Graduate Nurse Fellows Mentorship Program — Aspire to Hire

Margaret Rose Morales, MA, RN, ACNS, BC, NEA-BC
Joy McIlvaine, MS, RN-BC, ANP-BC, L.Ac.
Rose Otero, MSN, RN-BC,
Laura O'Brien, MA, RN, CCRN
Mary Ellen Cafiero, MA, RN, GNP, CCRN
Lydia Lopez, RN, MPA

P115 Introduction of Interprofessional Education into a Residency Program

Kayce Tugg, MSN, RN, AOCN
Marjorie Lima, MBA, MSN, RN-BC

COMPETENCY MANAGEMENT

P116 Creative Redesign of Annual Competencies with LEAN Principles

Katherine Pakieser-Reed, PhD, RN
Margaret DeKoning, MSN, RN-BC

P117 Competency Assessment: A Journey from Skills Fair to Peer Review

Jessica Glazier, MSN, RN, CMSRN
Amy Selimos, MSN, RN, PCNS-BC

P118 Multi-hospital Nursing Competency Program: First Climb, Then Coast

Heidi Beris, MSN, RN-BC
Kristine Buffa, MSN, RN, OCN, BMTCN
Tanya Carmichael, MSN, RNC-OB
Melanie Rainford, MSN, RN-BC, ACNS-BC
Christine Sites, MSN, RN

P119 Streamlining Electronic Skills Validation in a Large Hospital System

Heather Lozada, MSN, RN
Katherine Kim, BSN, RN, CCRN

P120 Electronic Competency Documentation: Observation Checklists

Gina P. June, MSN, RN

P121 Compress to Success: Is Your Staff Really Passing BLS?

Diane Millett, MBA, BSN, RN-BC, CEN
Jo-Ann R. Robinson, DNP, APN-BC, RN-BC, C-OB

EDUCATION

P122 Ripple Effect: Accurate and Timely Documentation for Patient Safety

Rebecca Patton, BSN, RN, CPN, CPST
Amy Wiens, MS, RN, CPNP-AC
Kathryn Edmister, BSN, RN

P123 Helping Learners Transition From "No!" to "Know!"

Lora Laszlo, BSN, RN, CEN, CPEN
Patricia A. Dlouhy, MSN/Ed., RN-BC, CEN
Maria Roznik, BSN, RN, CEN
Emily Zachman, BSN, RN

P124 Advancing Nursing Excellence: A Clinical Nurse Designed Conference

Kaitlyn Wilde, BSN, RN
Marie Willmann, BSN, RN-BC

P125 Flipped Classroom: Group vs Individual Experience Utilizing Blended Learning

Shoba Kanagamani, MSN, RN
Aleyamma James, MSN, RN-BC

POSTER PRESENTATIONS (cont.)

P126 "Dive Right In" Case Studies: New Graduate Nurse Rapid Clinical Engagement

Jacob Grossman, MSN, RN-BC
Jackie Keane, MSN, RN
Beth Willy, MSN, RN

P127 Something's Just Not Right: Recognizing Clinical Decline

Linda D. Holmes, MSN, RN-BC
Amy Carpenter, BSN, RN
Teri Hudson, BSN, RN

P128 Five Minutes to Improved NPD Utilization and Quality Outcomes

Susan Solmos, MSN, RN, CWCN
Kathleen Hudson, BSN, RN, CWOCN

P129 Translating Standardized Huddles into an Engaging Education Huddle Process

Katrina Marie Doyle, ADN, RN, PCCN

P130 Racing to the Finish Line: A New Electronic Medical Record

Edyta Soltan, MSN, RN-BC
Jaime Cesnickas Doane, MS, RN-BC

P131 Increasing Nurse Certification Using Interactive Teaching Strategies

Hephzibah Sophie Edwin, MSN, RN-BC

P132 Imaginative and Innovative Pain Management Learning Activities

Cheryl M. Miller, MSN, RN-BC
Kelsey Meyer, BSN, RN

P133 Practice Transition from RN to Nurse Practitioner: Imagine the Potential!

Pamela Pascarelli, DNP, RN-BC, CCRN, APN

P134 Engaging the Millennial New Grad through Interactive Gaming

Kerrie Singer, MSN, RN-BC

P135 Who Reads Education E-mails? Aspire to Improve Education E-mail Open Rates

Eve Mitchell, MS, RN, CCHP

P136 Nurse Residency Program Evaluation Plan Demonstrating Organizational Value

Amanda Mooror, MSN, RN-BC, CCRN-K
Faith Cantrell, MSN, RN

P137 Let the Games Begin!

Heather Martin, MS, RN, CPEN

P138 Reconstructing Rhythm Interpretation Education to Improve Outcomes

Stacey O'Brien, MSN, RN-BC
Mary Anne Boshier, MSN, RN-BC
Anne Martin, BSN, RN
Tracey Stell, BSN, RN
Melissa Williams Toper, MSN, RN, CCRN

P139 Revitalizing Nursing Grand Rounds (NGR) Utilizing Technology

Dianne Cirillo, MS, RN-BC

P140 Creating a Mentoring Culture to Support Professional Development

Sauna Memmolo, MSN, RN, CPN
Shelly Pignataro, MSN, RN-BC
Marilyn Moonan, MSN, RN-BC

P141 You've Got a Friend in Me: Empowering Nurses Through Creative Collaboration

Michelle Gallo, BSN, RN-BC
Martha Power, MSN, APRN, SCRNP, FAHA
Brandon Hostler, BSN, RN, CNRN
Matthew Summerfield, BSN, RN

P142 Stop the Call Simulation

Tiffany Daley, BSN, RN
Christine Yammarino, BSN, RN

P143 The Road to Bringing Creative Education Ideas to the Unit Level

Cindy Anne Taylor, MT, BSN, RN, CCRN

P144 Critical Skills Remixed: Nurses Utilizing Real-time Response Technology

Aliesha Rivera, MSN, RN-C
Deborah Lykens, MSN, RN-C
Kendall Scott, MSN, RN-C
Michelle Solimeo, MSN, RN-C

LEADERSHIP

P145 Night Shift Professional Development Practitioner: An Imaginative Solution

Kristin Belderson, DNP, RN-BC, CPON

P146 Dream Big: Transforming a Career Advancement Program to Meet Your Workforce Needs

Amanda Remillard, MS, RN-BC
Katherine Sheely Stancil, BSN, RN-BC

P147 Just Imagine — Successfully Develop and Host A Mini-Conference

Angie Rangel, MSN, RN-BC, CCRN, LNC
Jill Stonesifer, BSN, RN-BC, CPN

P148 A Float Unit's Journey to Beacon

Mary Rainess, MS, RN-BC

ONBOARDING/ ORIENTATION

P149 New Beginning for Nursing Service Orientation: Assessment & Recommendations

Meredith R. McGuffey, BSN, RN-BC, CNOR

P150 Oh, Boy, Here We Go Again: Mock Code Sims in New Employee Orientation

Patricia Burnell, MSN, RNC, RN-BC

P151 Supporting a New Generation of Nurses through an Evolving Residency Program

Jennifer Shelby, MSN, RN, CPN
Jamie Palomo, MSN, RN, CPHON
Kimberly McKnight, BSN, RN, CPN

POSTER PRESENTATIONS (cont.)

P152 Flipping the Transition to Cardiovascular Lab: A Unique Challenge

Melani Dawn Mangum-Williams, MSN, RN
Julia Parazin, BSN, RN, CNOR

P153 Nurse Residency Programs Make Fiscal Cents — Aiming for 100

Cindy Moore, MSN, RN, CPN

P154 Simulation in Nursing Orientation

Belinda A. Hermosura, MSN, RN, CHSE
Andrea Pecukaitis, BSN, RN, CEN
Meghan Perrotta, MSN, RN, OCN
Sean Carillon, BSN, RN, CMSRN

P155 Faculty Precepting: Synergy for New Graduate Onboarding

Lisa Benfield, MSN, RN

P156 Flipped Classroom in Licensed Nurse Orientation

Emily Goolsby, MSN, RN

P157 A Residency Program for Unlicensed Assistive Personnel (UAP)

Margo Preston Scott, MSN, RN-BC
Marie Graziela Bautista, MSN, RN, CPAN, CAPA
Shamaica DeV Vaughn-Bradley, MSN, RN
Stefanie Mann, MS, RN

P158 Engaging Learners in a Critical Care Orientation Program Using Simulation

Christine E. Bailey, MSN, RN, CCRN-K, CHSE

P159 Utilizing Blended Learning Methodologies for Cardiac Dysrhythmia Education

Barbara S. Ehrhardt, MSN, GCNS
Amy Costanzo, PhD, MSN, RN-BC

P160 Utilizing Simulation to Stimulate Learning of Blood Administration Skills

Lillian A. Donnelly, MSN, RN, OCN
Susan Zabala, BSN, RN, CBN

P161 Aspiring to Move from Overwhelming to Possible in Chemotherapy Orientation

Judy L. Johnson, MSN, RN, ONC, BMTN

P162 Coming Together: Standardized Orientation for 17 Hospitals

Melissa D. Rouse, PhD, MSN, CNS-BC, NEA-BC, CENP

P163 You Want Me to be a Preceptor, Now What? Orienting & Supporting Preceptors

Dawn M. Nelson, MS, RN-BC
Ellen Joswiak, DNP, RN-BC

P164 Standardizing Orientation Lengths: Dream or Reality?

Weatherly Brice, MSN, RN-BC
Cameron Mitchum, MSN, RN-BC, CCRN-K

P165 Integrating Self-care & Resiliency Building into Orientation and Onboarding

Janice Nuuhiwa, MSN, RN, APN/CNS, CPHON
Barbara Keating, MS, RN-BC

P166 Transforming Nursing Orientation: Lights, Camera, Action

Arlene Kruzel, MSN, RN-BC, CNRN

P167 Development of a Medical Surgical Nurse Fellowship

Lindsey Ford, MSN, RN
Marie Conahan, MSN, RN, CPN

P168 Interactive Learning and Interprofessional Teams: An Approach to Onboarding

Nikki Willis, MSN, RN-BC

P169 Red Light, Green Light & Potholes, Oh My! Repaving our Orientation Process

Kelly Honyak, MSN, RN-BC
Sarah Wolfe, MSN, RN-BC

P170 ACT Now: Implementation of an Acute Care Transition Nurse Training Program

Lindsay Picotte, MSN, RN-BC
Natalie Kunes, BSN, RN, CMSRN

P171 Facilitating an Onboarding and Orientation Structure that Promotes Retention

Stacey O'Brien, MSN, RN-BC

P172 Fixer Upper: A Successful Preceptor Development Program Renovation

Amanda Rossley, MSN, RN-BC

P173 Novice Nurses Aspire to Succeed: Nurse Residency Program

Lynn Stapleton, MN, RN-BC

P174 Utilizing Electronic Resources to Improve Communication Among New Graduates

Sarah Kennedy, MSN, RN, CPHON

P175 Developing NPD Practitioners: An Enduring Approach to their Orientation

Linda Rus, MSN, RN-BC
Khristina Grimm, PhD, RN-BC

RESEARCH/EBP/QI

P176 Assessing for Growth in Evidence-based Practice (EBP): The RNcEBP Survey

Lori Van Wingerden, BSN, RN-BC

P177 Imagine This: Newly Licensed Nurses as Evidence-based Practitioners

Elena Cappannelli, MS, RN-BC
Stacie Walsh, MSN, RN, CMSRN, WCC
Catherine Alvarez, MA, BS, RN

P178 Evaluating Effectiveness of Blended Learning on Preceptor Transformation

Nancy A. Campbell, MS, RN, BC

P179 Aspire to Change: Observing Interruptions to Emergency Department Nurses

Alycia Jarvis, DNP, RN-BC

P180 Is a Project Worth Rolling Out? Aspire Toward Reliable and Valid Measures

Jamie L. Bankston, MS-RN

P181 Educator Driven Intranet Redesign for Enhanced Communication & Satisfaction

Patrick C. Joyce, MSN, RN-BC

POSTER PRESENTATIONS (cont.)

P182 Developing a Group Mentoring Program for Newly Licensed Nurses

Lucinda Hinsey, MSN, RN

P183 The Impact of Monthly EKG Education for Nurses on Knowledge Retention

Janet Elder, MSN, RN-BC, CNE

P184 If You Can Dream It, You Can Design It: Continuing Education Innovation

Debra Liebig, MLA, BSN, RN-BC
Katherine Mick, MEd, MSN, RN, CPN
Christal Smith, BSN, RN

P185 Evaluating Transfer of Continuing Education to Practice

Tiffany Bryant, MSN, RN-BC, PCCN

P186 Prevention of Functional Decline: An Evidence-based Practice Initiative

Heather Caramanzana, MSN, RN-BC, CRRN
Paola A. Wilches, BSN, RN, NSHS

P187 Culture of Urgency: Decreasing Door to ECG Time

Jude Lark, BSN, RN, CEN, CCRN

P188 #mindstrong for Healthcare Professionals: A Pilot Study with New Nurses

Marlene Sampson, MSN/Ed, RN

P189 Just Imagine! Keeping up With Changes in Healthcare without Anguish!

Judy Bowling, PhD, MHA, RN-BC

ROLE DEVELOPMENT

P190 Poof! Imagine Creative Strategies for Preceptor Professional Development!

Jennifer Trestler, MS, RN-BC
Leslie R. Miller, MSN, RN

P191 Aspire to Imagine Your Dream Job

Heather Wallace, MSN, RN-BC, CPN

P192 Better Together: A Multi-state System Approach to Nursing Residency

Michelle A. Scortzaru, MSN, RN
Edna Zeller, MN, RN-BC, CDE
Julianne Luttrell, MS, RN, CNL

P193 Imagine a Certified You: Strategies to Increase Certification Rates

Kathleen Feldman, MSN, RN

P194 Using a Mentor Academy to Support Nursing Retention and Engagement

Maria Nix, MSN, RN
LeeAnn Dooley, BSN, RN

P195 Factors Contributing to Successful Role Transition in NPd

Elizabeth Fritz, MSN, RN-BC, SSM

P196 Improving Communication for Professional Development

Annette Roman, MSN, RN, OCN, MSKCC
Annette V. Pineiro, MPH, RN, OCN

P197 Interprofessional Simulation in a Nurse Residency Program

Phyllis Justus, DNP, RN, NEA-BC

P198 Prepare Today to L.E.A.D. Tomorrow

Donna A. Tanzi, MPS, BSN, RN-BC, NE-BC
Kimberly Kanner, MSN, RN-OCN

P199 Aspire to Create the Ideal Unit-based Skin Champion

Laura Walker, MSN, RN-BC, CNE, CCRN
Kelly Ryan, MS, RN, CWON, CCCN, CFCN

P200 When Time Doesn't Matter: Outcomes-based Education

Kristi Anderson, MN, RN-BC, CNL

P201 Hakuna Matata Means No Worries With a Summer Nurse Extern Program

Lisa A. Lumley, MSN, RNC-NIC, BC
Tricia A. Lewis, MSN, RNC, CNM

P202 ROAR (Rubric Orientation Assisting RNs)

Pamela Moore, MSN, RN-BC
Luanne Zwick, MSN, RN-BC

P203 Too Many Requests for Education? Imagine a Tool to Manage Requests

Debbie Buchwach, MSN, RN-BC
Nicki Shonka, MS, RN-BC, CPN

P204 Coaching for Coaches: Effective Feedback for Professional Advancement

Erin Barnaba, MS, RN, CNL

P205 Beyond Orientation: Contemporizing the Role of the NPd Practitioner

Amanda Eichstaedt, MBA, BSN, RN, CPN
Barbara Keating, MS, RN-BC
Janice Nuuhiwa, MSN, APN/CNS, CPHON
Rebecca Steinmann, MS, APN, CPEN, CEN, TCRN, CCRN, CCNS, FAEN
Lisa Tieman, BSN, RN, CPN

P206 Developing and Sustaining Nurse Planner Expertise of Accreditation Criteria

Valerie Ventura, MSN/Ed, RN-BC

P207 Improving Diabetes Care Through Education and Mentorship

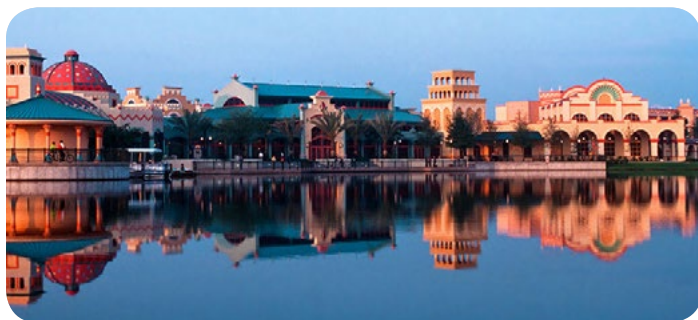
Wally Remegio, MS, RN-BC, NEA-BC, CCRN-CSC
Annie D. Lu, MS, RN, ANP-BC, BC-ADM

P208 Raising the Bar: Advancing Expertise at the Bedside

Kate Williams-Ashman, DNP, RN-BC

EVENT DETAILS

HOUSING AND TRAVEL



DISNEY CORONADO SPRINGS

1000 West Buena Vista Drive
Lake Buena Vista, Florida, 32830
(407) 939-1000

Room Rate
\$165 SINGLE/DOUBLE
Reserve by June 25, 2018

A block of rooms has been set aside for ANPD participants at a reduced rate at Disney Coronado Springs. Make your reservations by Monday, June 25, 2018 for discounted rates.

Relive the romance of Spanish Colonial Mexico at this enchanting Resort hotel. Find your mythical city of gold in a Southwestern-themed haven — from brightly colored casitas to rustic ranchos. Each unique accommodation provides its own unforgettable escape... and a welcoming home away from home.

- Complementary internet in all guest rooms
- Access to La Vida™ health club
- Pool with water slide
- Maya Grill

COMMUNITY SERVICE PROJECT



A Gift for Teaching was founded in 1998 by philanthropist and nonprofit professional, Gary Landwirth, who was moved by the fact that teachers, on average, spend \$500 - \$1,000 out of their own pocket each year to provide basic supplies for their students.

A Gift for Teaching is central Florida's primary provider of free school supplies. Today, A Gift For Teaching serves 338 public schools. There are more than 210,000 kids in central Florida whose families live at or below the poverty line. But the most shocking number is that 13,000 of those students are homeless. Our mission is to improve public school education by providing resources and surplus materials free to teachers for their students in need.

ANNUAL CONVENTION SCHOLARSHIPS

Gain valuable financial support to attend the premier education and networking event for nursing professional development practitioners. ANPD members who meet eligibility requirements are encouraged to apply for an Annual Convention Scholarship in order to join like-minded colleagues at this exciting event. For information about how to apply, visit the [ANPD website](#).



ANPD ON THE GO!

Download the ANPD Annual Convention mobile app sponsored by Elsevier to receive important updates and information on your smart phone or tablet. The app is filled with content you can use both before and during the annual convention in Lake Buena Vista.

The app will be available on July 1.

ANPD 2018 EXHIBITORS

A Fashion Hayvin, Inc.	Laerdal Medical
American Association of Critical Care Nurses	MCN Learning
American Public University System	Med-Ed, Inc.
American Nursing Credentialing Center (ANCC)	Nurse Builders
Apex Innovations	Oncology Nursing Society
Avkin	Padiatric Learning Solutions
Calmoseptine, Inc.	Pediatric Nursing Certification Board
CE Direct/OnCourse Learning	Relias Learning
Cornerstone OnDemand	Safe Medicate
Creative Health Care Management	Sigma Theta Tau International
Elsevier	The Nurse Residency Partnership
eParamus	The Ohio State University College of Nursing
Galen Center for Professional Development	The University of Iowa College of Nursing
Galen College of Nursing	Vizient
HealthStream	Western Governors University
InPlace Software	Wolters Kluwer
K2 Medical	

THANK YOU ANPD SPONSORS!*

ELITE SPONSOR

ELSEVIER

GOLD SPONSOR



SILVER SPONSORS



**Sponsors as of February 1, 2018*



Association for Nursing
Professional Development

2018 ANNUAL CONVENTION REGISTRATION FORM

July 17–20, 2018 — Lake Buena Vista, FL / Pre-convention Workshops: July 16–17, 2018

Deadline for faxed or mailed registration forms: **on or before July 10, 2018**

HOW TO REGISTER

Online: www.anpd.org

Mail: ANPD Registration
330 N. Wabash, Suite 2000
Chicago, IL 60611

Fax: 312-673-6835

Tax ID: 59-3018398

For registration questions e-mail
registration@anpd.org

CANCELLATION POLICY

All cancellations must be received in writing no later than June 18, 2018. All monies will be refunded minus a \$150 processing fee. Cancellations will only be refunded via the method in which they were paid. After June 18, no refunds are available. Registrations may, however, be transferred to another person. Transfer requests must be made in writing to registration@anpd.org.

REGISTRANT CONTACT INFORMATION *(Please print clearly)*

Your registration will be confirmed by e-mail, so please provide an accurate e-mail address.

First Name _____ Last Name _____

Highest Educational Degree _____

Highest Nursing Degree *(if different from highest educational degree)* _____

Credentials will appear on badge as listed here. Please list your licensure first followed by your certification. For example, MSN, RN-BC.

License/Certification _____

Position Title _____

Institution _____

Address _____

City/State/Province _____ Postal Code _____

Phone _____ Fax _____

E-mail (required) _____

I am a member of the _____ Affiliate of ANPD

DEMOGRAPHIC INFORMATION

1. Please check the box that best describes your function:

- ☐ Chief Learning Officer
- ☐ NPD Department Manager/Director
- ☐ Unit-based NPD Practitioner
- ☐ Centralized Department NPD Practitioner
- ☐ Consultant/Independent Contractor/Entrepreneur
- ☐ Other: *(specify)* _____

2. Years of experience in the nursing professional development specialty:

- ☐ 0-5 years
- ☐ 6-10 years
- ☐ 11-20 years
- ☐ More than 20 years

3. How many ANPD Annual Conventions have you attended?

- ☐ 0 — I am a first time attendee
- ☐ 1-3
- ☐ 4-6
- ☐ 7-9
- ☐ 10+

4. What is the size of your organization?

- ☐ Fewer than 50 full-time employees
- ☐ 50-100 full-time employees
- ☐ 101-500 full-time employees
- ☐ 501-1000 full-time employees
- ☐ 1000-2000 full-time employees
- ☐ More than 2,000 full-time employees
- ☐ N/A — self-employed, retired, full-time student

5. How much does your hospital, office or place of employment spend on nursing professional development products and services in one year?

- ☐ Under \$50,000
- ☐ \$50,001 – 100,000
- ☐ \$100,001 – 200,000
- ☐ \$200,001 – 500,000
- ☐ \$500,001 – 1,000,000
- ☐ Over \$1,000,000

6. What is your role in the purchase of nursing professional development products?

- ☐ Final decision maker, all products
- ☐ Final decision maker, some products
- ☐ Recommend products
- ☐ Investigate products
- ☐ No role

7. What month are budget requests made in your institution?

8. How did you pay to attend the Annual Convention?

- ☐ I paid my expenses and registration out of pocket
- ☐ I paid my expenses, my facility paid my registration
- ☐ My facility paid my expenses and registration
- ☐ I paid my expenses and a scholarship/outside resource paid my registration
- ☐ Other *(specify)* _____

PHOTOGRAPHY

On occasion, ANPD may take photos of participants at the 2018 ANPD Annual Convention, or of people participating in Annual Convention functions. These photos are for ANPD use only and may appear in ANPD promotional materials, the mobile app or ANPD social media channels. Your registration constitutes your consent for this photography.

First Name _____ Last Name _____

PRE-CONVENTION WORKSHOPS

Pre-convention workshops are NOT included in the full convention or one day convention fee. Pre-convention workshops are optional and have a separate fee.

2-day NPD Certification Preparation Course

Monday, July 16 –
Tuesday, July 17,
8:00 am – 5:00 pm

- ☐ Member \$325
☐ Non-member \$500

1-day Workshop

Tuesday, July 17
8:00 am – 4:30 pm

- ☐ W105

This workshop costs \$300 for members and \$400 for non-members.

Half Day Pre-convention Workshop (each)

Please select only one workshop per timeslot. Workshops cost \$175 each for members and \$275 each for non-members.

Monday, July 16
1:00 pm – 5:00 pm

- ☐ W101 ☐ W103
☐ W102 ☐ W104

8:00 am – 12:00 pm

- ☐ W106 ☐ W108
☐ W107 ☐ W109

12:30 pm – 4:30 pm

- ☐ W110
☐ W111
☐ W112

Subtotal C (Preconvention Workshops): \$ _____

Grant Total Payment Enclosed (A+B+C): \$ _____

CONVENTION REGISTRATION

ANPD membership must be current to receive member rate.

Full Convention			
	Early (by May 18)	Regular (May 18-June 29)	Late (after June 29)
Member	\$575	\$700	\$900
Member Group*	\$525	\$650	\$850
Non-member	\$850	\$925	\$1,025
Non-member Group*	\$800	\$875	\$950

*Group registration is for three or more attendees from the same employer. Please mail all group registration forms to ANPD with a check in the correct amount. You can also send in a completed registration form and ANPD will e-mail you an invoice.

Single Day		
	Regular (By June 29)	Late (after June 29)
<input type="checkbox"/> Tues.	\$150	\$250
<input type="checkbox"/> Wed.	\$300	\$400
<input type="checkbox"/> Thurs.	\$300	\$400
<input type="checkbox"/> Fri.	\$250	\$350

Subtotal A: Registration Options : \$ _____

REGISTRATION ADD-ONS

- ☐ Guest* \$300 ☐ NPD Speed Networking Event Imagination Stations: \$20
Tuesday, July 17, 4:45 pm – 5:45 pm

Guest pass includes Exhibit Hall access, all food functions within the Exhibit Hall and Friday's networking breakfast. Guests may not attend ANY education sessions. Guests must be 21+.

Please select your Special Interest Groups (SIGs) below for Imagination Stations: NPD Networking Event.

- ☐ Orientation/Onboarding ☐ Education ☐ Role Development/Transition to Practice
☐ Competency Management ☐ Research/EBP/QI ☐ Collaborative Partnerships ☐ Leadership
☐ Mentorship ☐ Technology ☐ Nurse Planners

If you have any special needs, accommodations or requirements (including dietary), please detail your requirements here:

Subtotal B: Registration Add-ons : \$ _____

TWO EASY WAYS TO PAY

☐ Mail Your Check Payment

Complete this form and mail your check payment (made payable to "ANPD") to:

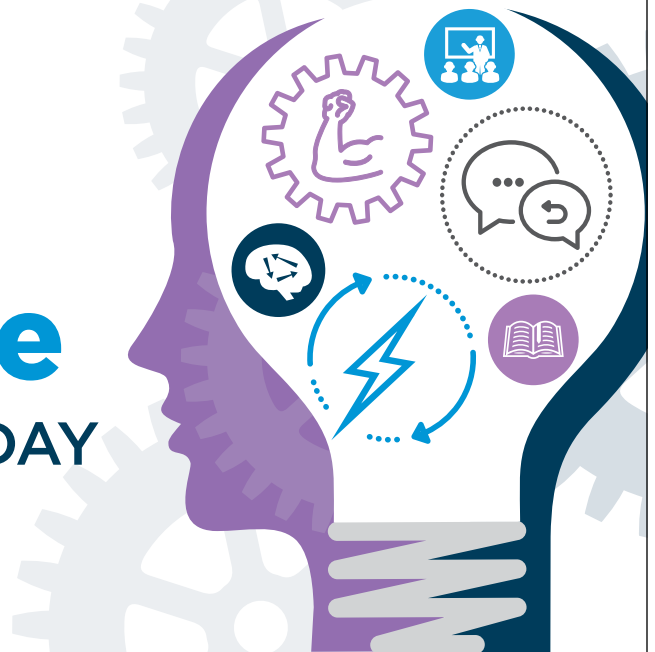
ANPD Registration
330 N. Wabash, Suite 2000
Chicago, IL 60611

☐ Pay Online with a Credit Card

To pay by credit card, please register at www.anpd.org. For your security, do not include credit card information on this form.

ANCC 15TH ANNUAL SYMPOSIUM ON CONTINUING NURSING EDUCATION

Empower, Engage, and Energize THE LEARNERS OF TODAY AND TOMORROW



JULY 16-17, 2018

DISNEY'S CORONADO SPRINGS RESORT
LAKE BUENA VISTA, FL

An official preconference event
of the Association for Nursing
Professional Development (ANPD)
Annual Convention

Nursing professional development (NPD) practitioners, through continuing nursing education, are empowering and transforming nursing professional practice to improve patient and health outcomes. Come to the ANCC 15th Annual Symposium on Continuing Nursing Education to explore leadership styles and share strategies that will empower, engage, and energize the learners of today and tomorrow.

This official preconference of the ANPD Annual Convention addresses the key components NPD practitioners need to advance the learner and learning environment.

REGISTER TODAY! www.cnesymposium.org

Questions? Email meetings@ana.org or call 1.800.284.2378.



**Nurse planners, NPD practitioners, managers, faculty,
and clinical educators: Don't miss this event!**