

T64 Compact Track Loader



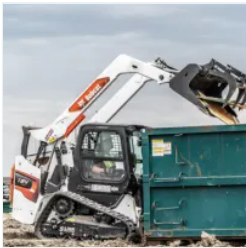
The vertical-lift-path Bobcat® T64 compact track loader delivers outstanding performance for maximum lifting and pushing power.

- Cast-steel lift arm construction
- Engine checkpoints are within easy reach
- The Bobcat® engine meets Tier 4 regulations without a diesel particulate filter
- Undercarriage design enhances ride quality and reduces track wear
- Enhanced cold weather operation

[Build & Quote](#)

[Contact Dealer](#)

[View Offers](#)



[Find Dealer](#)

[Download Brochure](#)

T64 Overview

- The Bobcat® T64 compact track loader delivers industry-leading breakout force, rated operating capacity and faster cycle times.
- Premium comfort features include the one-piece pressurized cab, operator-friendly controls, innovative displays and sound-dampening technology.
- The redesigned 68-hp, inline engine and direct drive system provide the performance to tackle tough jobs while reducing and simplifying routine maintenance.
- Each component – including the engine, pumps and hydraulic system – is engineered to deliver maximum hydraulic performance so you can work quicker, lift more and outperform your competition.
- With the most advanced in-cab display for compact equipment, you'll experience detailed machine information and unparalleled device connectivity.

T64 Specifications

T64 Key Specifications	
Rated Operating Capacity (ISO)	2,300 lb
Operating Weight	8727 lb
Ground Pressure (Rubber)	5.7 psi
Auxiliary Std Flow	17.6 gal/min

Auxiliary Std Flow	17.6 gal/min
Auxiliary High Flow	26.9 gal/min
Joystick Control	Optional

Engine	
Emissions Tier (EPA)	Tier 4
Engine Cooling	Liquid
Engine Fuel	Diesel
Horsepower	68 hp
Turbocharged Engine	yes

Performance	
Rated Operating Capacity (ISO)	2,300 lb
Operating Capacity (50% of Tip)	3286 lb
Tipping Load	6571 lb
Operating Weight	8727 lb
Travel Speed	7.2 mph
Travel Speed (2-speed option)	10.2 mph
Ground Pressure (Rubber)	5.7 psi

Capacities	
Fuel Tank	28.3 gal

Hydraulic System	
System Relief @ Quick Couplers	3,500 psi
Auxiliary Std Flow	17.6 gal/min
Auxiliary High Flow	26.9 gal/min

Dimension	
Length	134.9 in
Length without Attachment	107 in
Length with Standard Bucket	134.9 in
Width	67 in
Width (with bucket)	68 in
Height	80.5 in

Height with Operator Cab	80.5 in
Height to Bucket Hinge Pin	120 in
Reach @ Maximum Height	36.7 in
Turning Radius	81.5 in
Length of track on ground	54.3 in
Track Width	12.6 in
Track Width - Optional	15.7 in

Features	
Joystick Control	Optional
Air Conditioning	Optional
Backup Alarm	Standard
BICS System (Interlock)	Standard
Cab Heater	Optional
Operating Lights	Standard
Suspension Seat	Standard
Two Speed Travel	Optional
Deluxe Instrumentation	Optional
Engine Shutdown	Standard
Hydraulic Bucket Positioning	Optional
High Flow Option	Optional
Auxiliary Hydraulics	Standard
Bob-Tach Attachment System	Standard
Power Bob-Tach	Optional
Ride Control	Optional
Horn	Standard

T64 Features & Benefits

Expand all ▾

Performance 13

Uptime Protection 6

Comfort 9

Serviceability 5

Versatility 3

T64 Attachments

[View All Attachments >](#)



Angle Broom - 68"

Clear away dirt, dried mud, light snow and other debris.



Auger - 35PH

Direct drive augers are ideal for digging holes for posts, piers, poles, or trees.



Auger - 50PH

Direct drive augers are id posts, piers, poles, or tre



WARNING: *This product can expose you to chemicals including engine exhaust (including diesel engine exhaust when equipped), lead and lead compounds, mineral oils, soots, phthalates, and carbon monoxide which are known to the State of California to cause cancer and birth defects or other reproductive harm. For more information go to www.P65Warnings.ca.gov.*

Certain specification(s) are based on engineering calculations and are not actual measurements. Specification(s) are provided for comparison purposes only and are subject to change without notice. Specification(s) for your individual equipment will vary based on normal variations in design, manufacturing, operating conditions, and other factors.