

T62 Compact Track Loader



The Bobcat T62 compact track loader is engineered to get the tough jobs done.

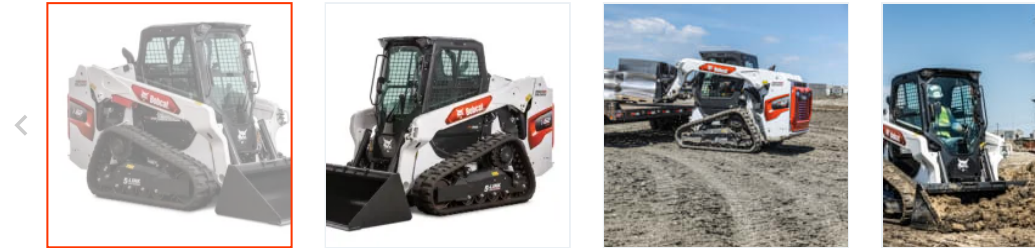
- Powerful and efficient Tier 4 non-DPF engine
- Fast cycle times
- Premium comfort
- Reduced and simplified routine maintenance

[Build & Quote](#)

[Contact Dealer](#)

[View Offers](#)

[Find Dealer](#)



[Download Brochure](#)

T62 Overview

- Elevate your productivity with the Bobcat® T62 compact track loader’s powerful breakout forces, fast cycle times and streamlined maintenance.
- Featuring an inline engine and direct-drive system as well as lift arms of cast-steel construction, this radius-lift-path compact track loader is engineered to get the tough jobs done.
- The 68-hp T62 delivers powerful digging and grading performance and generous reach at mid-range heights.
- The T62 features a one-piece, sealed and pressurized cab that repels dust and dirt while providing leading visibility and unmatched comfort.

T62 Specifications

T62 Key Specifications	
Rated Operating Capacity (ISO)	2,150 lb
Operating Weight	8612 lb
Ground Pressure (Rubber)	5.64 psi
Auxiliary Std Flow	17.6 gal/min
Auxiliary High Flow	26.9 gal/min

Joystick Control	Optional
------------------	----------

Engine	
Emissions Tier (EPA)	Tier 4
Engine Cooling	Liquid
Engine Fuel	Diesel
Horsepower	68 hp
Turbocharged Engine	yes

Performance	
Rated Operating Capacity (ISO)	2,150 lb
Operating Capacity (50% of Tip)	3071 lb
Tipping Load	6143 lb
Operating Weight	8612 lb
Travel Speed	7.2 mph
Travel Speed (2-speed option)	10.2 mph
Ground Pressure (Rubber)	5.64 psi

Capacities	
Fuel Tank	28.3 gal

Hydraulic System	
System Relief @ Quick Couplers	3,500 psi
Auxiliary Std Flow	17.6 gal/min
Auxiliary High Flow	26.9 gal/min

Dimension	
Length	134.9 in
Length without Attachment	107 in
Length with Standard Bucket	134.9 in
Width	67 in
Width (with bucket)	68 in
Height	80.5 in
Height with Operator Cab	80.5 in
Height to Bucket Hinge Pin	114.5 in

Reach @ Maximum Height	23 in
Turning Radius	81.6 in
Length of track on ground	54.3 in
Track Width	12.6 in
Track Width - Optional	15.7 in

Features ▲	
Joystick Control	Optional
Air Conditioning	Optional
Backup Alarm	Standard
BICS System (Interlock)	Standard
Cab Heater	Optional
Operating Lights	Standard
Suspension Seat	Standard
Two Speed Travel	Optional
Deluxe Instrumentation	Optional
Engine Shutdown	Standard
Hydraulic Bucket Positioning	Optional
High Flow Option	Optional
Auxiliary Hydraulics	Standard
Bob-Tach Attachment System	Standard
Power Bob-Tach	Optional
ACS (Switchable Controls)	Not Applicable
Ride Control	Optional
Horn	Standard

T62 Features & Benefits

Expand all ▾

Performance 13 ▼

Uptime Protection 6

Comfort 9

Serviceability 5

Versatility 3

T62 Attachments

[View All Attachments >](#)



Angle Broom - 68"

Clear away dirt, dried mud, light snow and other debris.



Auger - 35PH

Direct drive augers are ideal for digging holes for posts, piers, poles, or trees.



Auger - 50PH

Direct drive augers are id posts, piers, poles, or tre



WARNING: *This product can expose you to chemicals including engine exhaust (including diesel engine exhaust when equipped), lead and lead compounds, mineral oils, soots, phthalates, and carbon monoxide which are known to the State of California to cause cancer and birth defects or other reproductive harm. For more information go to www.P65Warnings.ca.gov.*

Certain specification(s) are based on engineering calculations and are not actual measurements. Specification(s) are provided for comparison purposes only and are subject to change without notice. Specification(s) for your individual equipment will vary based on normal variations in design, manufacturing, operating conditions, and other factors.