

E20

Compact Excavator



Get impressive performance in tight areas with minimal repositioning.

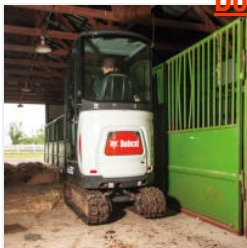
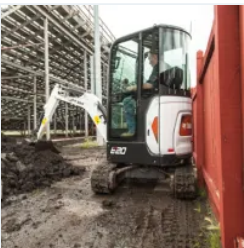
- Ultra-compact design
- 39 to 54 inch retractable track width
- Zero tail swing

[Build & Quote](#)

[Contact Dealer](#)

[View Offers](#)

[Find Dealer](#)



[Download Brochure](#)

E20 Overview

- The Bobcat® E20 compact (mini) excavator delivers impressive performance in tight areas with minimal repositioning.
- Hydraulically retract the undercarriage to only 39 inches to travel through gates or between homes, then expand to 54 inches for a wider footprint and greater performance.
- Zero tail swing gives you better maneuverability on the most restricted jobsites.

E20 Specifications

| E20 Key Specifications | |
|-------------------------------|-----------|
| Horsepower | 13.9 hp |
| Operating Weight | 4,306 lb |
| Bucket Digging Force | 4,684 lbf |
| Maximum Reach at Ground Level | 14 ft |

| | |
|-----------------|-------|
| Width | 39 in |
| Tail Swing Type | Zero |

| Engine | |
|------------------------------|-----------|
| Emissions Tier (EPA) | Tier 4 |
| Engine Fuel | Diesel |
| Maximum Governed RPM | 2,500 rpm |
| Horsepower | 13.9 hp |
| Turbocharged Engine | no |
| Optional Turbocharged Engine | N/A |

| Performance | |
|-------------------------------|-----------|
| Operating Weight | 4,306 lb |
| Weight Class | 2 t |
| Travel Speed - High | 2.6 mph |
| Travel Speed - Low | 1.3 mph |
| Arm Digging Force | 2,086 lbf |
| Bucket Digging Force | 4,684 lbf |
| Rated Lift Capacity | 1098 lb |
| Lift Radius | 118 in |
| Boom Swing - Left | 80° |
| Boom Swing - Right | 60° |
| Maximum Dig Depth | 8.4 ft |
| Max Dump Height | 8.8 ft |
| Maximum Reach at Ground Level | 14 ft |

| Capacities | |
|------------|-------|
| Fuel Tank | 5 gal |

| Hydraulic System | |
|--------------------|-------------|
| Auxiliary Std Flow | 7.9 gal/min |
| Auxiliary Pressure | 2,610 psi |

| Dimension | |
|-----------|----------|
| Length | 145.2 in |

| | |
|-----------------------------------|----------|
| Overall Length in Travel Position | 145.2 in |
| Width | 39 in |
| Height | 90.4 in |
| Height with Operator Cab | 90.4 in |

| Features | |
|-------------------------------------|----------------|
| Air Conditioning | Not Applicable |
| Cab Enclosure | Optional |
| Cab Heater | Optional |
| Heater Air Conditioning | Not Applicable |
| Radio | Optional |
| Tail Swing Type | Zero |
| Engine Shutdown | Standard |
| Auxiliary Hydraulics | Standard |
| Secondary Auxiliary Hydraulics | Not Applicable |
| Quick Tach System | Not Applicable |
| Rubber Track | Standard |
| Selectable Auxiliary Hydraulic Flow | Optional |
| Angle Blade | Not Applicable |

E20 Features & Benefits

Expand all

- Performance

6
- Comfort

5
- Uptime Protection

8
- Versatility

1
- Serviceability

1

E20 Attachments

[View All Attachments >](#)



Auger Drive Unit - 10

Direct drive augers are ideal for digging holes for posts, piers, poles, or trees.



Bucket - Trenching, 12" (Pin-On)

Dig narrow, deep trenches while maintaining excellent breakout force and fast cycle times.



Bucket - Trenching, 9" (Pin-On)

Dig narrow, deep trenches while maintaining excellent breakout force and fast cycle times.



WARNING: *This product can expose you to chemicals including engine exhaust (including diesel engine exhaust when equipped), lead and lead compounds, mineral oils, soots, phthalates, and carbon monoxide which are known to the State of California to cause cancer and birth defects or other reproductive harm. For more information go to www.P65Warnings.ca.gov.*

Certain specification(s) are based on engineering calculations and are not actual measurements. Specification(s) are provided for comparison purposes only and are subject to change without notice. Specification(s) for your individual equipment will vary based on normal variations in design, manufacturing, operating conditions, and other factors.