



---

**THE MERCURY**  
**VENUE HIRE**

# Our Story

The Mercury has been a unique screen home to screen culture in South Australia for over 50 years. The bricks-and-mortar theatre is a unique and iconic space in the west end, offering two unique theatre style venues for screenings, launches, and networking events. Whether you're hosting a private film night or a full-capacity premiere, our spaces come with experienced staff, tech, and charm.





MERCURY CINEMA WELCOMES FILI





# Spaces

**All bookings are a 3-hour minimum. Bump-in and bump-out must occur within the booking window.**

Space	Capacity Pax	Inclusions
The Iris	36 Seated	1 FOH staff member, 1 projectionist, shared foyer access & licensed candy bar
The Mercury	60 Seated	
	90 Seated	As above + 1 additional FOH Staff Member
	186 Seated	As above + 2 additional FOH & foyer extension for outside standing or seated consumption.
Foyer	80 Standing	2 FOH Staff Members



# Hire Rates

**There are limited discounted venue hires available to Mercury Subscribers, Screen Industry Members, Educational Institutions and Not for Profit organisations. Please email [venue@themercury.org.au](mailto:venue@themercury.org.au) for more information**

Space	3hr Minimum	Additional Hour	Full Day
The Iris	\$450	\$80	\$800
The Mercury 60 Pax	\$800	\$100	\$1450
The Mercury 90 Pax	\$1000	\$125	\$1750
The Mercury 186 Pax	\$1500	\$150	\$2300
Foyer	\$500	\$80	\$800

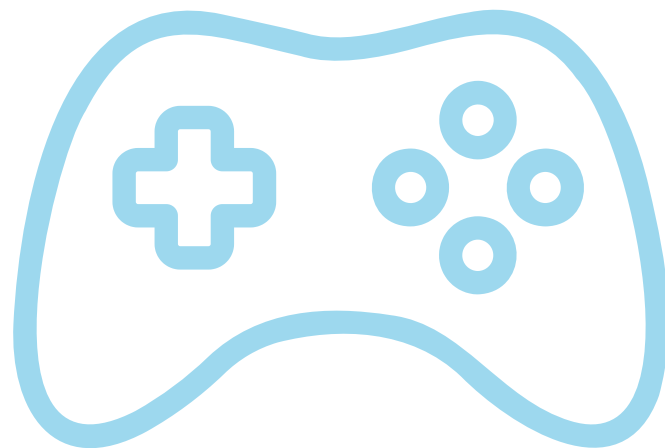
# Gaming

3hr Minimum	Additional Hour	Full Day
\$300	\$90	\$800

Have your favorite console and up to 20 of your closest friends in for a jumbo gaming session.

- BYO console
- Console but connect via HDMI port
- Wireless internet connection available upon request

**ONLY AVAILABLE IN THE IRIS**







# Catering

Popcorn on arrival per head

Small \$3

Large \$4.5

Small popcorn and soft drink on arrival \$6

Large popcorn and soft drink on arrival \$8

Small popcorn and beer or wine on arrival \$12

Corkage \$10 per bottle

## Catering Facilities

2 x Pie Warmers

1 x Soup Warmer

1 x Microwave

1 x Coffee Urn

1 x Water Urn

Limited fridge and freezer space available on request  
along with Assorted glassware and crockery









# Additional

Item	Cost
Foyer Extension for outside standing or seating with consumption	\$150/day
FOH Staff Member	\$50/hr 3hr Minimum
Projection/Tech Staff Member	\$50/hr 3hr Minimum
Glass/Crockery hire	\$50
Screening Rights	\$100 - 300
DCP Creation & Editing	\$150







# Accessibility

## The Mercury

### **Mobility**

The Mercury cinema has unrestricted view standard wheelchair access. 8 spots in the front row and 4 spots in the top back row.

### **Audio visual aid**

The Mercury's main cinema supports Audio Description on films that have it. Dolby Fidelio headsets that can provide either the primary or secondary audio to up to 6 patrons with headsets. We also have a hearing aid loop in the main cinema.

## The Iris

The Iris has restricted side view wheelchair access for 2 spots to the left of the screen. The Iris has no audio assistance



# Accessibility

## **Load-in Area**

There is 10-minute loading zone outside the front of the venue just off Morphett Street.

## Parking

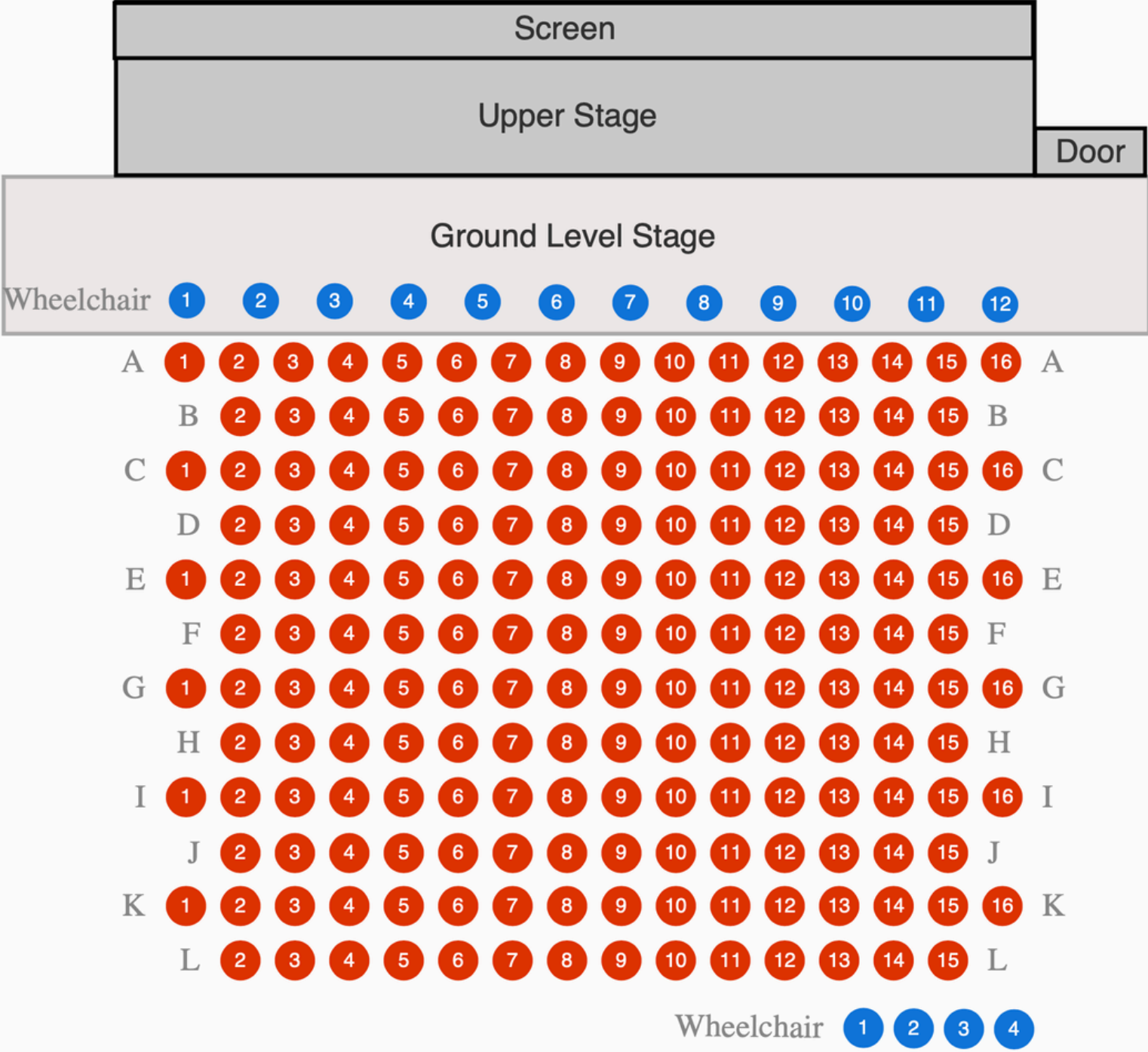
There are three council car parks outside the front of the venue, just off Morphett Street. These are limited to ½ hour parking 8am-8pm Monday to Friday, 8am to 5pm Saturday to Sunday.

There is also one dedicated disable car park.

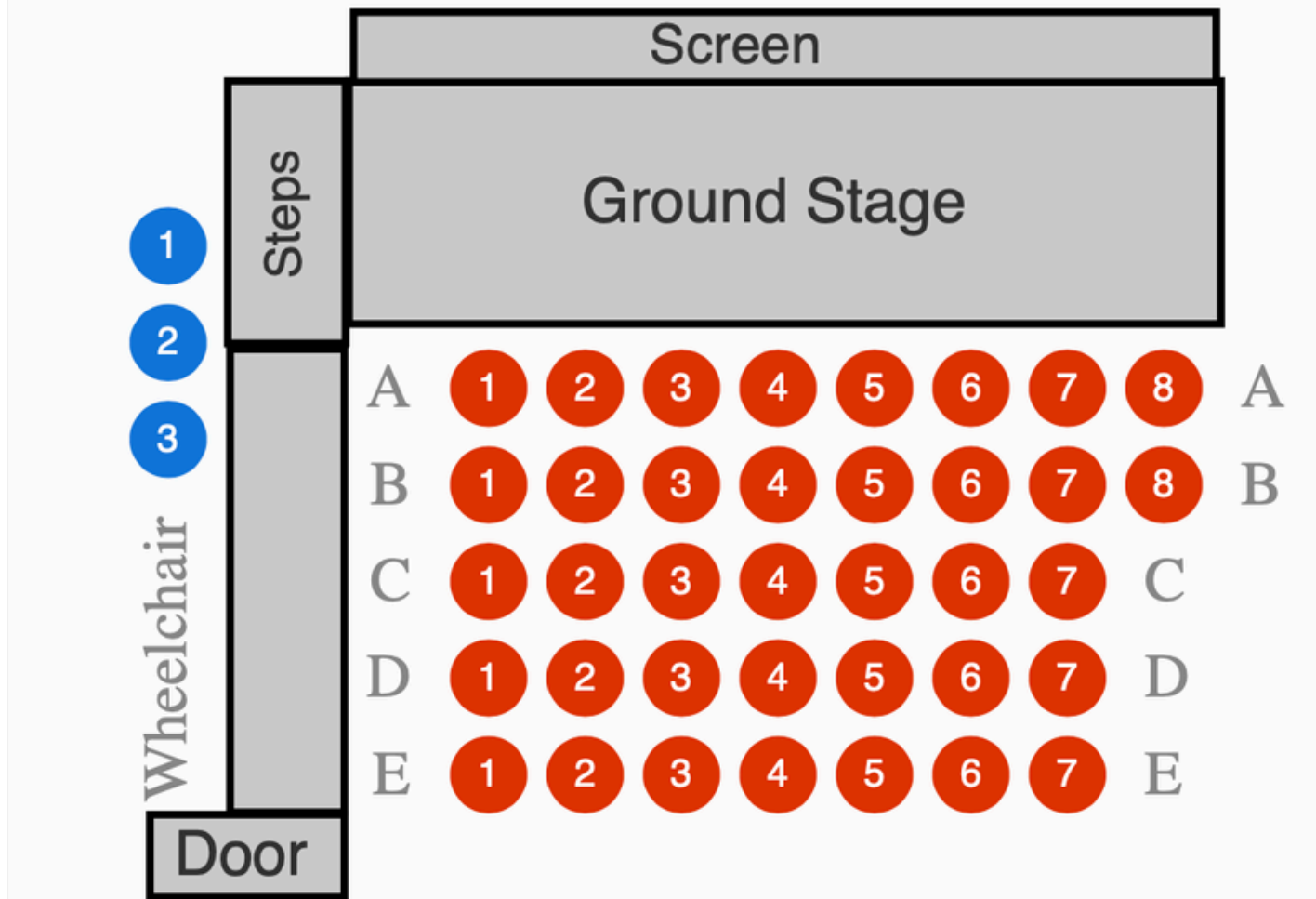
## **Storage Space**

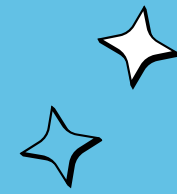
There is very little storage space in the venue.  
Please see the Venue Manager for any storage requirements.

# MERCURY CINEMA



# IRIS CINEMA





# Booking

To submit your booking enquiry:  
Fill out our online form by scanning  
the QR code or clicking [HERE](#)



We look forward to hearing from you!

