

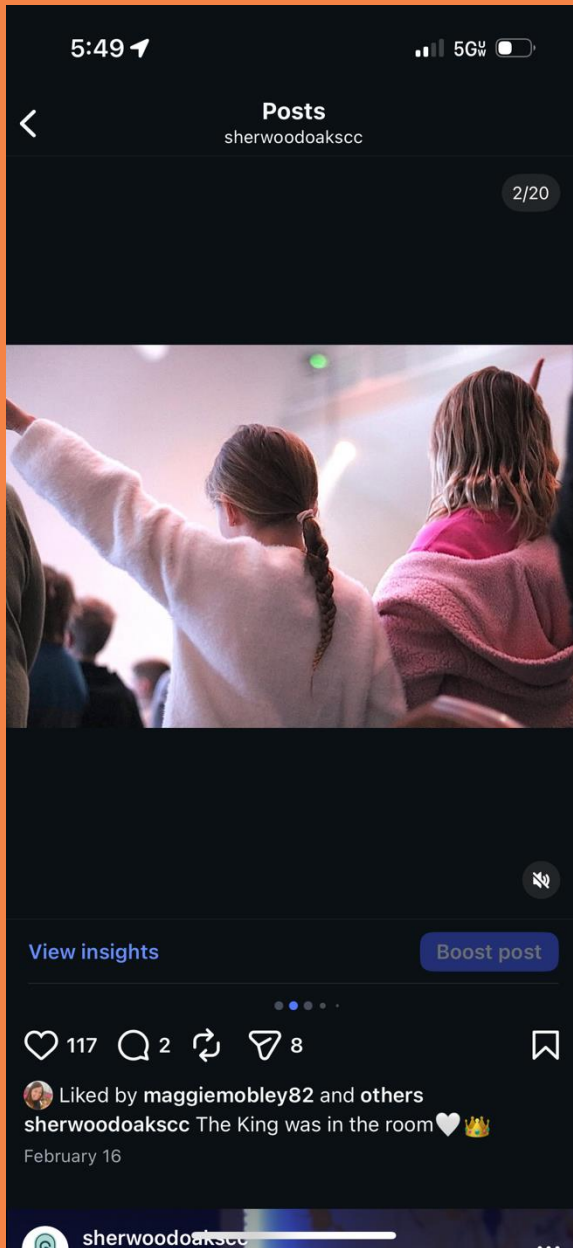




*We value telling life-changing faith stories.*

**SOCC VALUE**

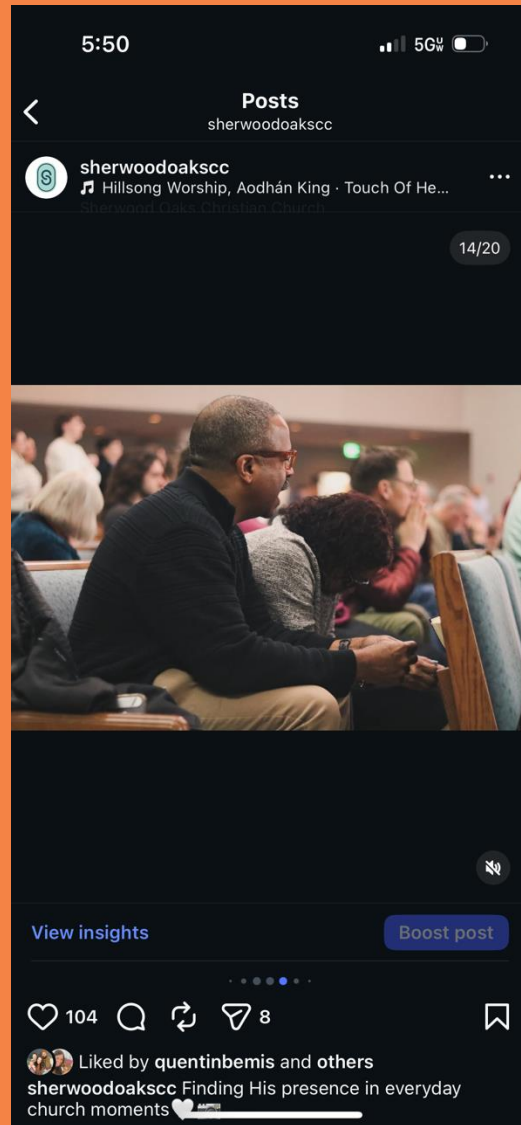




**4862 views**  
**(1475 non-followers)**  
**133 interactions**  
**10 shares**  
**1 account follow**

4100 views  
(1000 non-followers)  
94 interactions  
1 shares





4600 views  
(1700 non-followers)  
112 interactions  
8 shares

9000 views  
(4500 non-followers)  
136 interactions  
2 comments  
8 shares  
3 saves





*When we take great photos... that show  
the life of the church in an encouraging and  
life-changing faith story...*

***It MATTERS!***







# KEY PICTURES TO CAPTURE ON SUNDAY MORNINGS





# SPEAKER PHOTOS



# VOLUNTEERS





# WORSHIP LEADERS



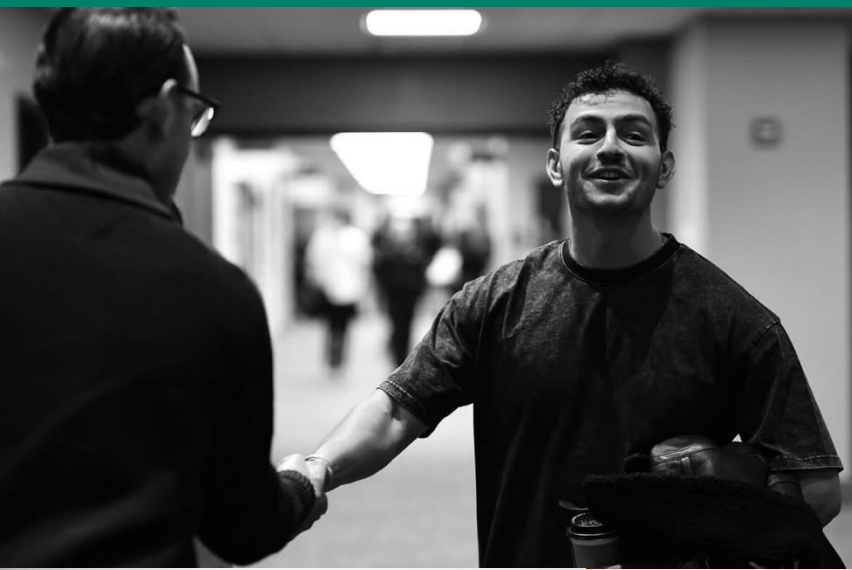


# PASTORS WITH THE CONGREGATION

# PEOPLE/ PLACES YOU MAY RECOGNIZE

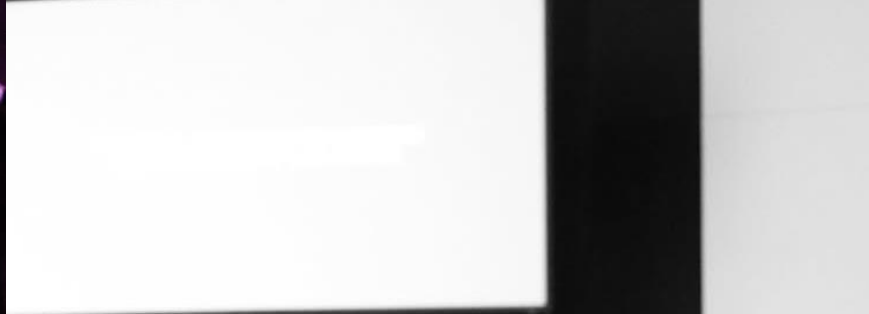


# SMILING/HUGGING /CONNECTION IN THE LOBBY



1/18


1/18



**QUIET  
MOMENTS/  
RAW, REAL**



Most relevant ▾

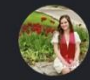
 **Kenzie Ramey** · 3w  
Beautiful 🐱 [Eden Alderdice-Parker](#)  
Reply Hide ❤️ 1 👍 🗨️


 **Joshua-Eden Parker** · 3w · ❤️ by Author  
[Kenzie Ramey](#) thank you!!! I was so surprised when I was scrolling through this post and saw myself 😂😂  
Reply Hide ❤️ 2 ❤️ 🗨️

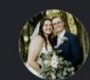
View 1 reply

Most relevant is selected, so some comments may have been filtered out.

# REPRESENTATION

 **victorialeeder** 2w · ❤️ by author  
[@ashton.renee.21](#) we got sniped AGAIN ❤️  
Reply Hide 2

 **ashton.renee.21** 2w · ❤️ by author  
[@victorialeeder](#) we're just casually the two with the MOST dramatic facial expressions at church 😂 ❤️  
Reply Hide 2

 **eversyn** 2w · ❤️ by author  
🔥  
Reply Hide 1

# Canon DSLR Controls & Settings Explained

*Learn How to Use Your Camera with Confidence*



# MENU BUTTON #1

Opens camera settings menu  
Adjust settings like:

- Image Quality (RAW/JPEG)
- Beep
- Aspect Ratio
- Grid Display
- And more options organized into tabs



# INFO BUTTON #2

- Cycles through display screens
- Shows aperture, shutter speed, ISO
- May include mode descriptions



# START/STOP BUTTON#3

- Switch between photo and video mode

- Press to start/stop recording



# AF/ON BUTTON #4

- Activates focus using back button
- Faster, more precise focusing



# AE LOCK/ZOOM OUT #5



- Locks exposure settings
- Prevents camera from changing brightness

# ZOOM IN/ AF POINT SELECTION #6

- Zoom in to check detail
- Change focus point while shooting



# QUICK CONTROL/ Q BUTTON #7



- Opens quick settings menu
- Allows fast adjustments

# PLAYBACK BUTTON #8



- Review photos and videos
- Scroll through images

# QUICK CONTROL DIAL #9



- Main navigation tool
- Adjust settings and move through menus
- Press **SET** to confirm

# DELETE/TRASH BUTTON #10



- Deletes photos during playback
- Confirmation usually required

# LOCK SWITCH #11



- Prevents accidental setting changes
- Disables buttons/dials when turned on
- *Camera may not have this feature*

# SHUTTER BUTTON

- Used to take the photo
- Press halfway to **focus the camera**
- Press fully to **capture the image**



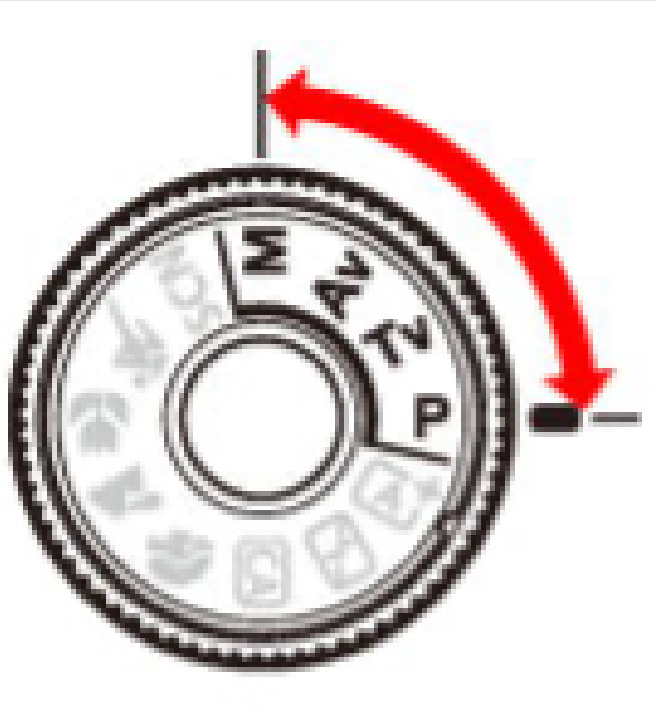
# VIEWFINDER BUTTON

- Switches between viewfinder and LCD screen

- *Some older models may include this feature*

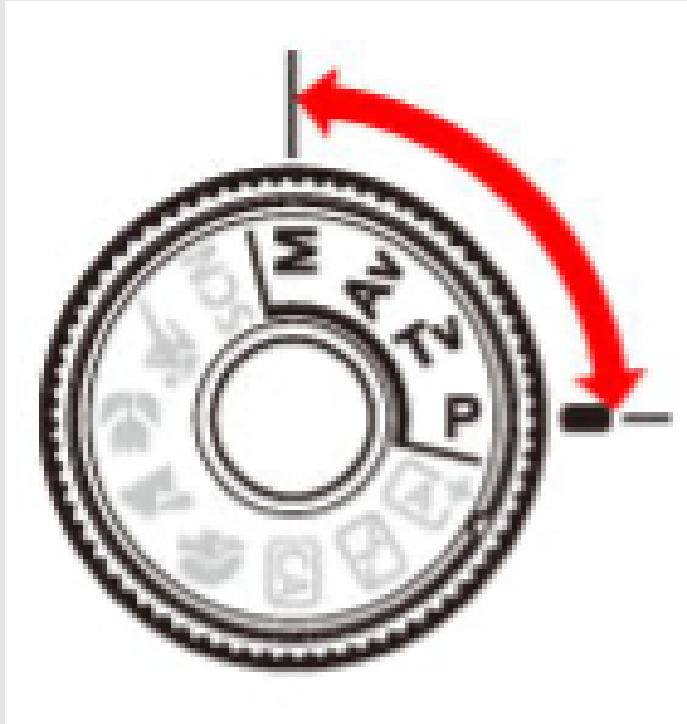


# DIAL MODES



- **M (Manual):** full control
- **Av (Aperture Priority):** control aperture (background blur)
- **Tv (Shutter Priority):** control shutter speed (motion)
- **P (Program):** camera sets exposure, you adjust some settings
- **A+ (Auto):** camera controls everything
- **Flash Off:** same as auto, but no flash
- **CA (Creative Auto):** simple control over blur and brightness
- **Portrait (👤 woman icon):** blurs background, good for people
- **Landscape (🏔️ mountains):** sharp focus throughout, good for scenery
- **Close-Up (🌸 flower):** for small subjects, like details or objects
- **Sports (🏃 running person):** fast shutter speed for motion
- **SCN (Scene):** more preset shooting options

# WHAT MODE SHOULD YOU USE?



**M (Manual):** full control over your settings

- Best for consistent lighting (like church services)
- Can still switch lens to auto focus

**Auto:** quick and easy when you don't have time to adjust

**Sport (🏃):** fast-moving photography

- Great for quick moments like hugs or interactions in the lobby

# CAMERA MODE #1

- Shows shooting mode (M, Auto, P, etc.)



# EXPOSURE BASICS #2/#3/#4

- Shutter speed:  
controls motion blur
- Aperture: controls  
light & depth
- ISO: controls  
brightness



# EXPOSURE SCALE #5

- Range: -3 to +3
- 0 = correct exposure
- Negative = dark, Positive = bright



# IMAGE STYLE & COLOR #6/#7

- Picture Style:  
color & contrast
- White Balance:  
corrects color  
tone



# LIGHTING ASSISTANCE #8

- Auto Lighting Optimizer brightens images
- Works in auto/semi-auto modes



# FOCUS SETTING #10/#11

- Focus Mode: still vs moving subjects
- Focus Area: where camera focuses



# SHOOTING SETTINGS #12/#13

- Exposure Mode:  
how light is measured
- Drive Mode:  
single, burst, timer



# IMAGE QUALITY #14

- RAW: high quality, editable (always use RAW)
- JPEG: smaller, ready to use



# CONTROLS AND CUSTOMIZATIONS #15

- Q Button: quick access menu
- Custom Controls: personalized setup



# CAMERA STATUS #16/#17

- Battery level
- Images remaining



# CAMERA CONNECTIONS #1/#2

- USB: connect to computer
- HDMI: connect to TV for playback



# AUDIO PORTS #3/#4



- Microphone:  
improves video  
audio externally
- Headphones:  
monitor or review  
sound

# REMOTE SHOOTING#5



- Remote shutter port for hands-free photos
- Helps reduce shake & take self-portraits

# MEMORY STORAGE #6

- SD card stores photos
- Some cameras have dual slots
- Location on camera may vary



# FRONT CAMERA #1/#2



- Pop-Up Flash: built-in flash for low light
- Lens Unlock Button: press + twist to remove lens

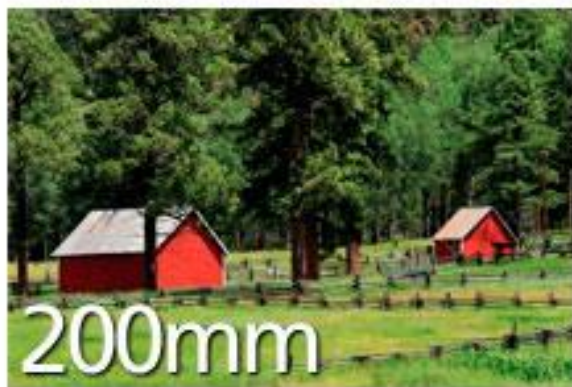
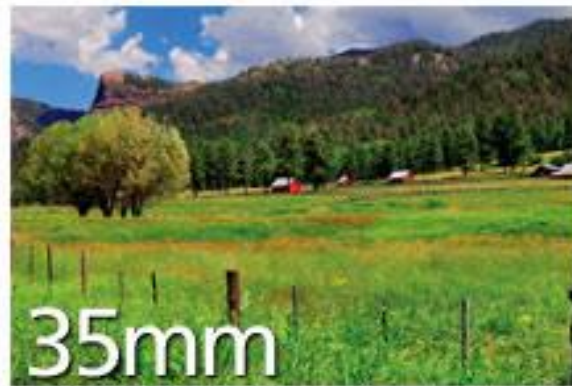
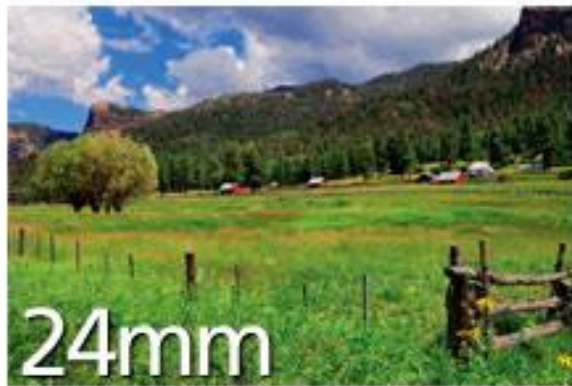
# FOCAL LENGTH AND LENS USE

- Focal length (mm) determines zoom & field of view

## Lens Examples (Church Use):

- 18–55mm: wide lobby shots, group photos
- 55–250mm: preaching/stage shots from a distance
- 50mm f/1.8: lobby portraits, candid moments
- 85mm f/1.4: portraits, worship shots with strong blur





# LENS NOTES

- $f/1.2$  –  $f/2$ : best for low light (common in lobby)
- Lower f-stop = more light + blurred background
- Higher f-stop = less light + more in focus
- Kit lenses often have  $f/4$ – $5.6$

May include:

- Auto/Manual focus
- Image stabilization



# RF vs EF LENS/COMPATIBILITY

EF: for DSLR cameras

RF: for mirrorless cameras

- EF lenses don't directly fit RF cameras
  - RF lenses don't fit DSLR cameras
  - Adapter needed for EF → RF
- RF → EF



Always check compatibility (could damage if not compatible)



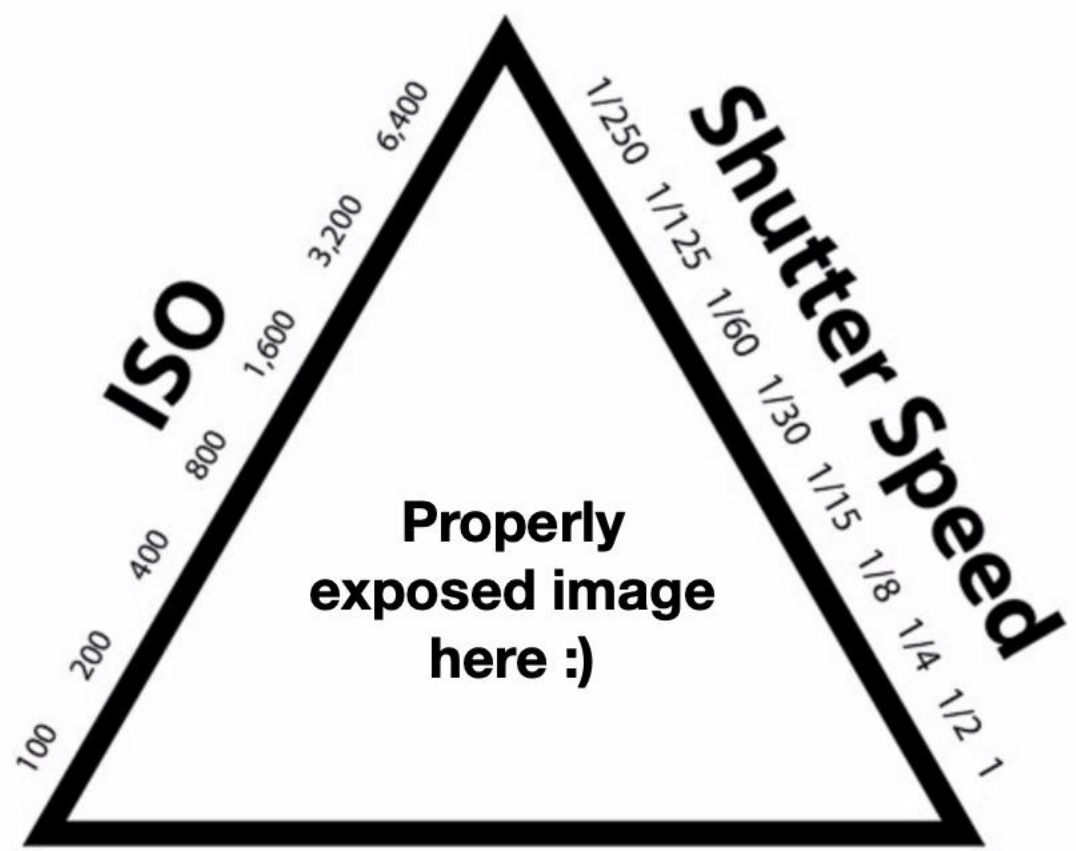
# Photography 101

by Noah Saylor

**Concepts we'll cover:**

- exposure triangle
- effects of camera settings
- stops of light
- white balance
- context vs. detail

# Exposure Triangle



Properly  
exposed image  
here :)



f/2.8   f/4   f/5.6   f/8   f/11   f/16   f/22

**Aperture**

# Aperture

small  
aperture



F32

F22

F16

F11

F8

F5,6

F4

F2,8

F2

F1,4

large  
aperture

# Shutter

fast  
shutter speed



1/1000

1/500

1/250

1/125

1/60

1/30

1/15

1/8

1/4

1/2

slow  
shutter speed

# ISO

low  
sensitivity



ISO 50

ISO 100

ISO 200

ISO 400

ISO 800

ISO 1600

ISO 3200

ISO 6400

ISO 12800

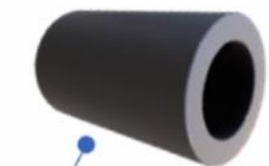
ISO 25600

high  
sensitivity

# Depth of Field (aperture)

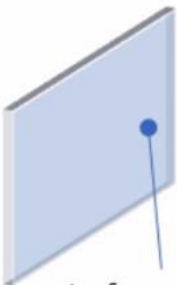
## Depth of field

Shallow



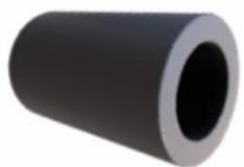
**F/1.8**

Lens



In-focus area

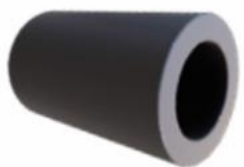
Moderate



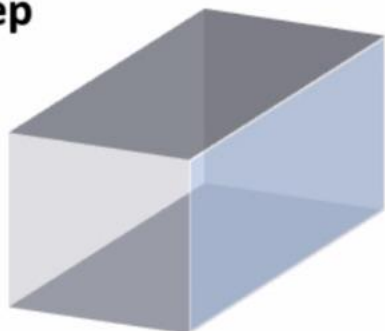
**F/5.6**



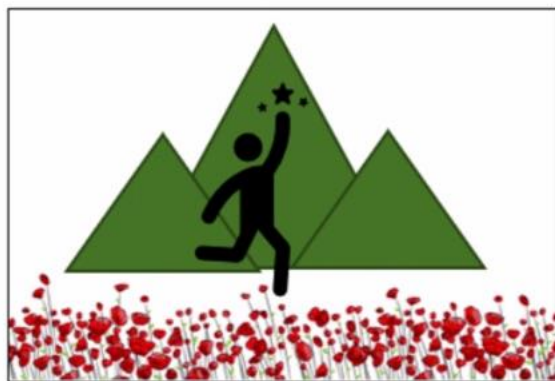
Deep



**F/11**



## Bokeh (Out of focus blurring)



**Motion Blur**  
(shutter speed)

shutter opens

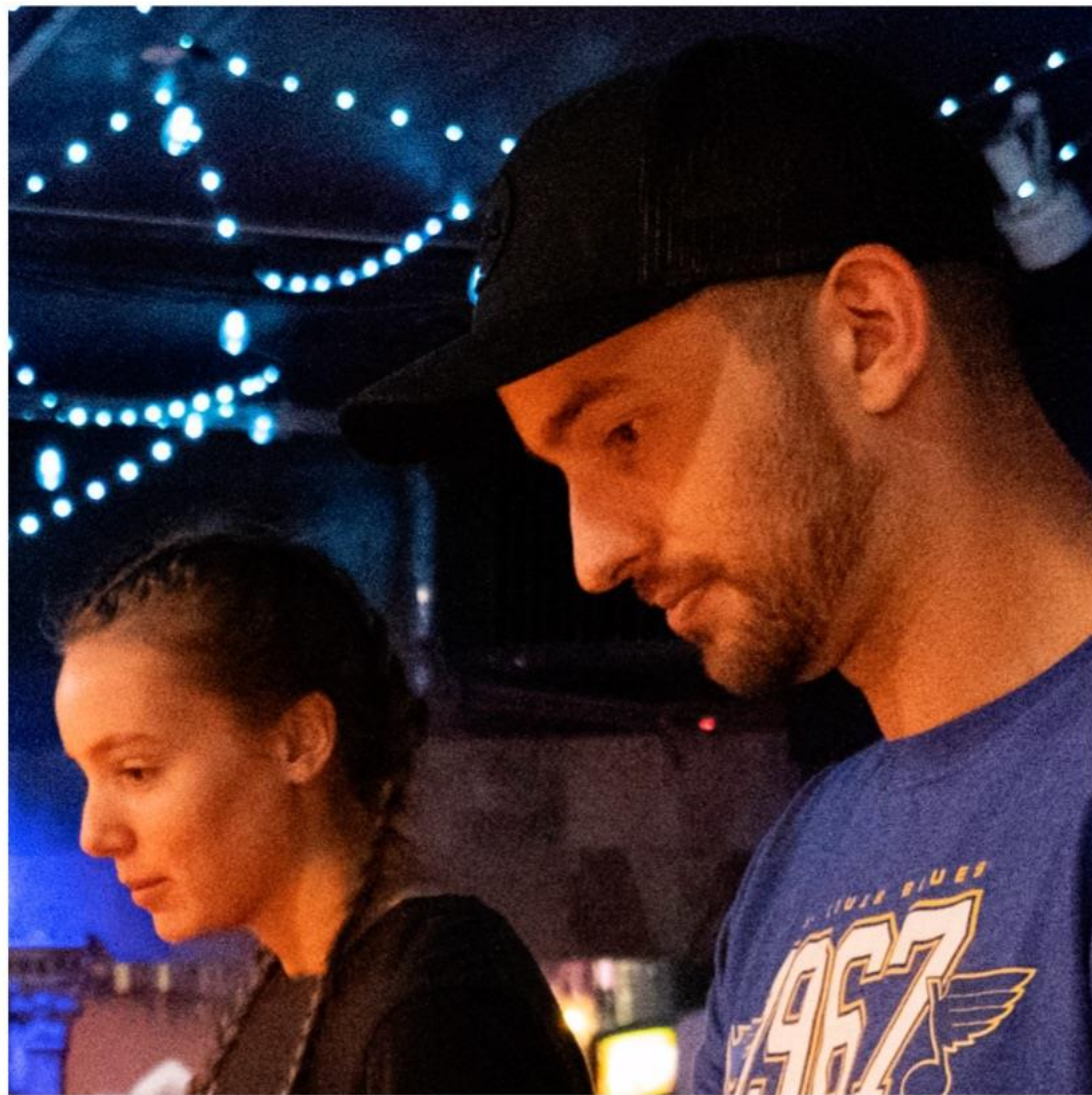


shutter closes



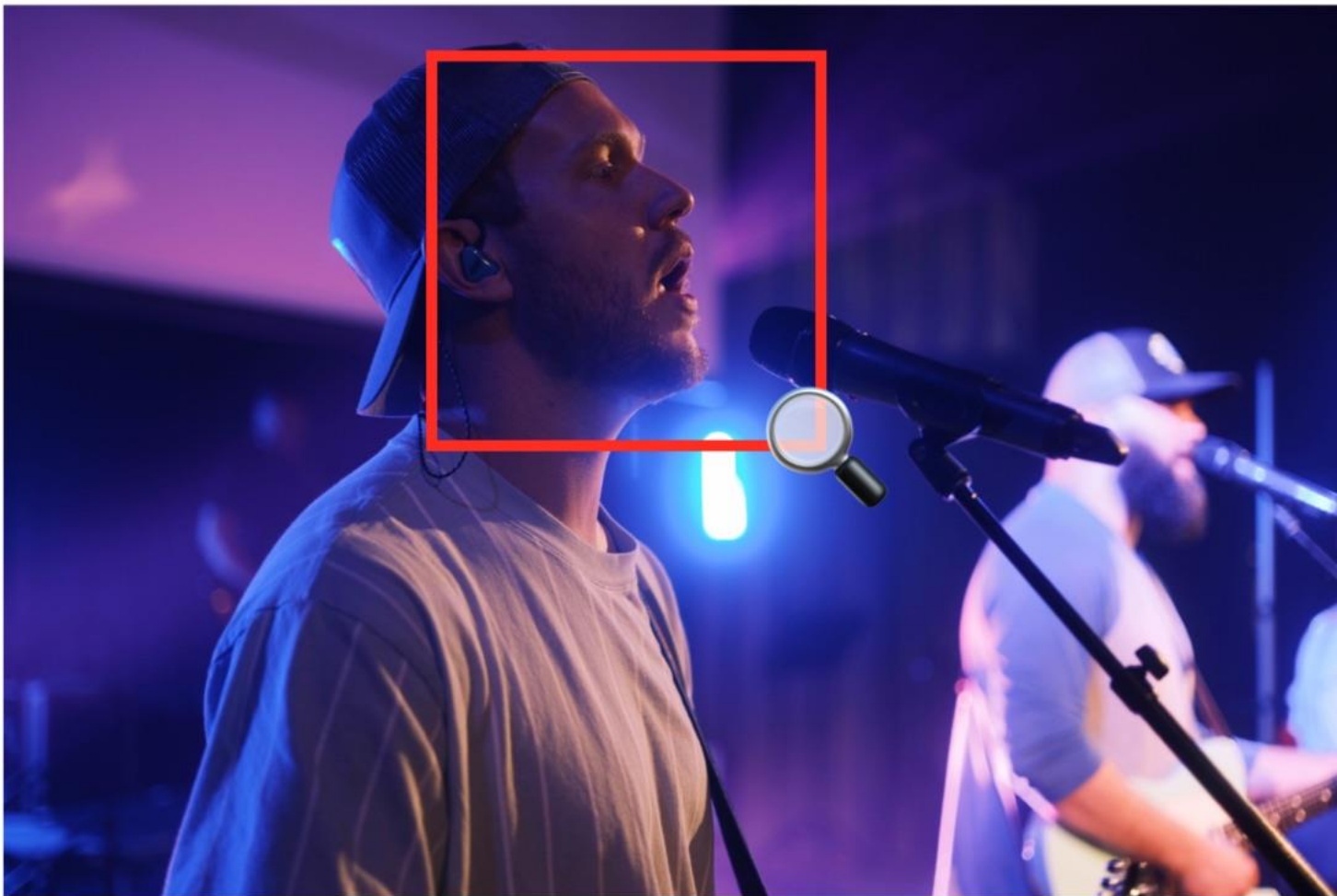
# Digital Noise

(ISO)

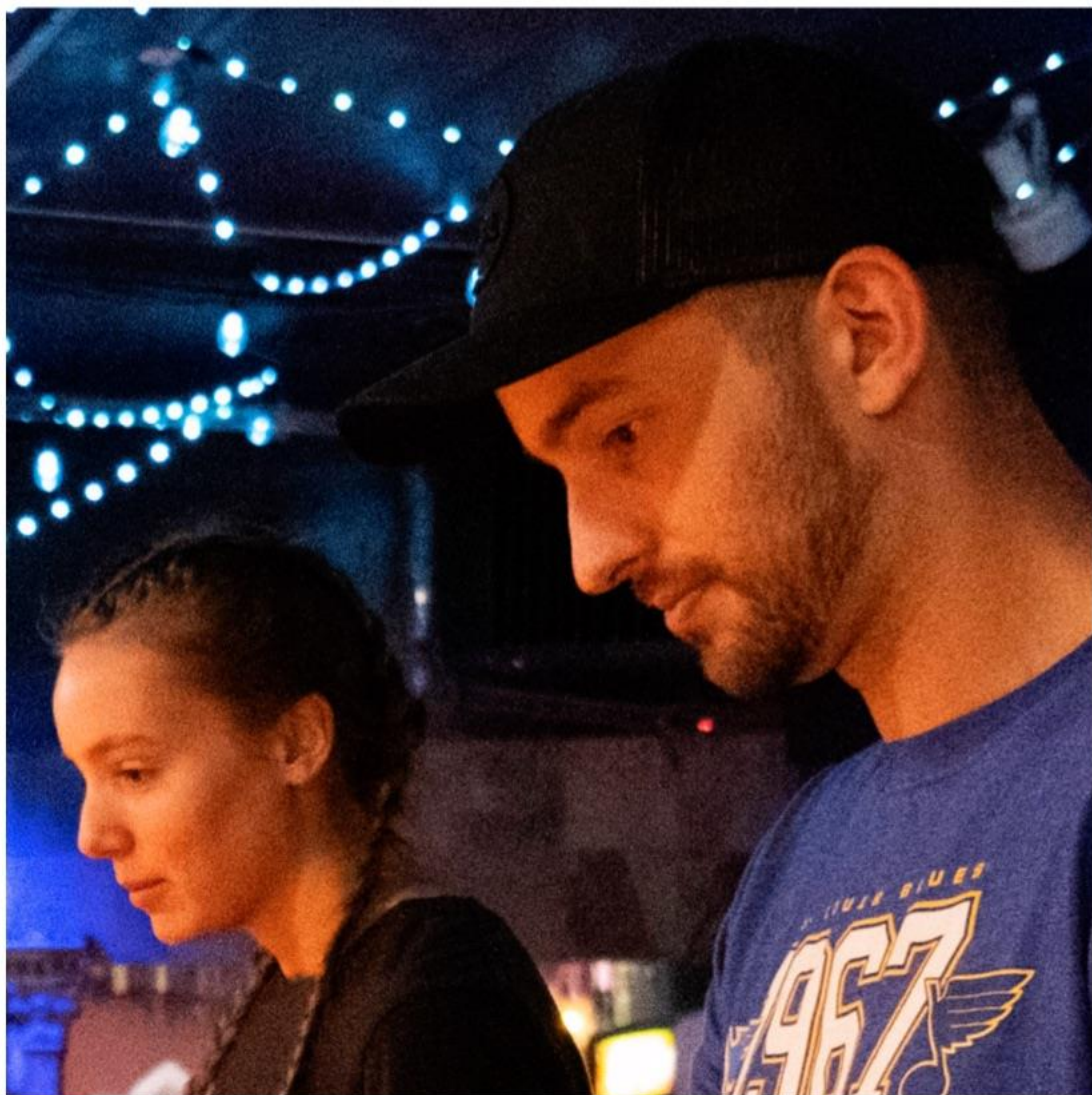


ISO 12800

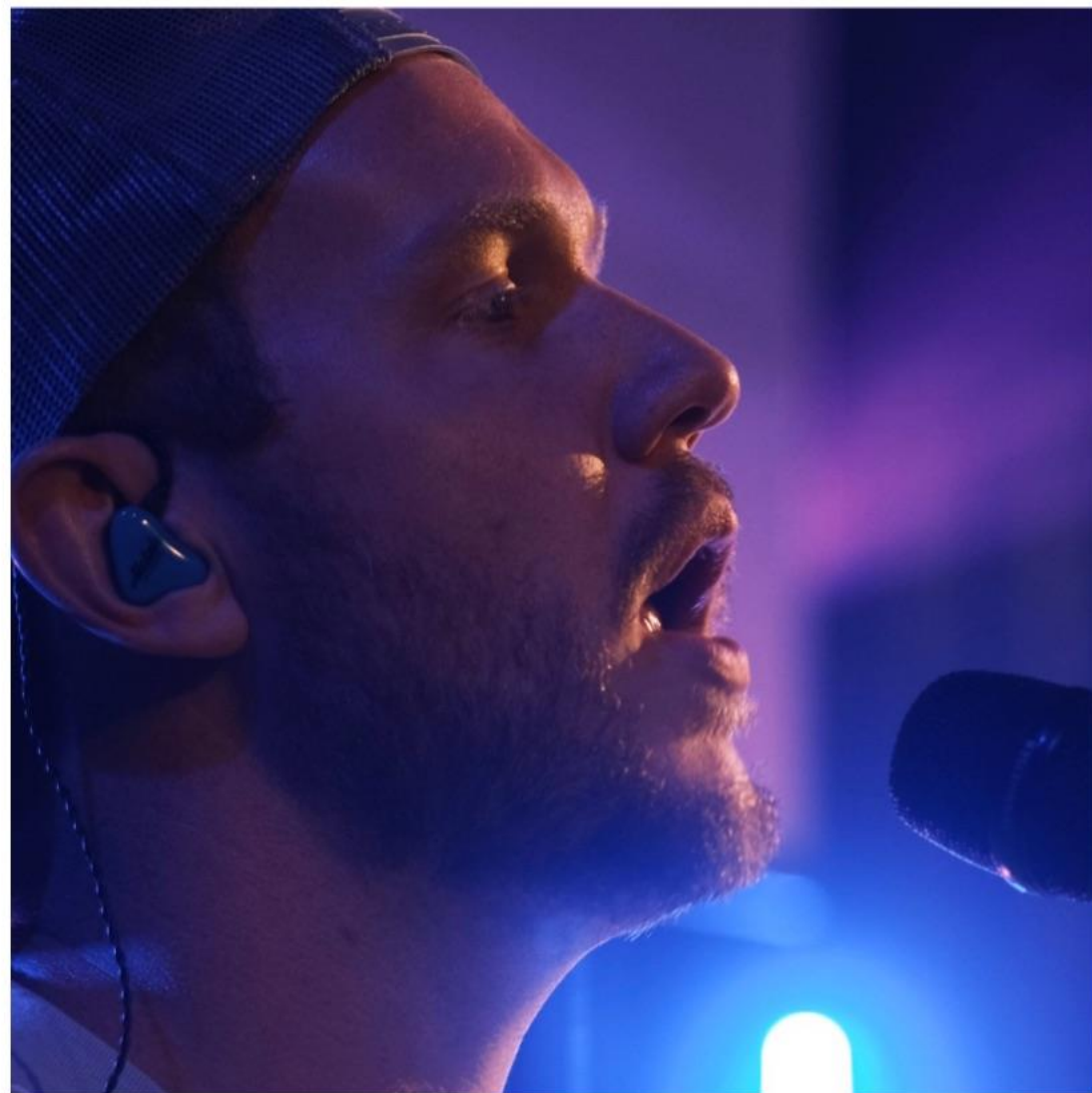




ISO 160



ISO 12800



ISO 160

What's a "stop"?

A “stop” is a relative halving or doubling of the amount of light hitting the sensor.

Brightening an image by 1 stop will let in twice the amount of light to the sensor.

Darkening an image by 1 stop will let in half the amount of light to the sensor.

## Changing a setting by stops

f/1.4	1/100	100
f/2.0	1/200	200
f/2.8	1/400	400
f/4.0	1/800	800
f/5.6	1/1600	1600
f/8.0	1/3200	3200
f/11.0	1/6400	6400

**Why is this important?**

So you can easily use one camera setting  
to compensate for another!

Also so you can read this:



-3 .. 2 .. 1 .. 0 .. 1 .. 2 .. +3


so, for Sundays...

general starting point:

- keep shutter speed between 1/100 and 1/250
- keep aperture between f/1.4 and f/5.6
- keep ISO as low as possible

Pop quiz!

How to improve the  
exposure triangle?



I AM WHO YOU SAY I AM

**1/60**

**f/9**

**ISO 6400**

I AM WHO YOU SAY I AM

1/60

f/4

~~f/8~~

+2

ISO 1600

~~ISO 6400~~

-2



**1/1800**

**f/5.6**

**ISO 500**



1/225 +3

f/8 -1

ISO 125 -2

~~1/1200~~

~~f/5.6~~

~~ISO 500~~



**1/160**

**f/1.4**

**ISO 300**



1/160

f/5.6<sup>-4</sup>  
~~f/1.4~~

ISO 4800<sup>+4</sup>  
~~ISO 300~~

**a noisy image is better  
than a blurry one!**

**1/160**

**f/5.6** <sup>-4</sup>

~~**f/1.4**~~

**ISO 4800** <sup>+4</sup>

~~**ISO 300**~~

**White Balance**



**Use Auto White Balance.**

**Shoot in RAW.**

# Detail vs. Context

(close-up vs. wide)







**Detail**

emphasizes the  
features of a subject

**Context**

gives extra meaning  
to your subject



Put all this together.  
What do you get?



**55mm**

**1/320**

**f/2.8**

**ISO 400**



**18mm**

**1/160**

**f/2.8**

**ISO 4000**



**75mm**

**1/125**

**f/1.2**

**ISO 500**



**18mm**

**1/320**

**f/1.4**

**ISO 1250**



**150mm**

**1/200**

**f/2.8**

**ISO 1250**



33mm

1/2700

f/1.4

ISO 640



16mm

1/125

f/4

ISO 1000



160mm

1/320

f/5

ISO 3200



**27mm**

**1/105**

**f/8**

**ISO 320**

What's wrong with these?





**Random notes:**

-I promise, it's not about the gear

-I promise, it's not about the gear  
-(except for lenses lol)

- I promise, it's not about the gear
- (except for lenses lol)
- It's allllll about the light!

- I promise, it's not about the gear
- (except for lenses lol)
- It's allllll about the light!
- Sensor size affects your focal length

- I promise, it's not about the gear
- (except for lenses lol)
- It's alllll about the light!
- Sensor size affects your focal length
- to avoid camera shake:  
shutter speed = 2 x focal length

- I promise, it's not about the gear
- (except for lenses lol)
- It's alllll about the light!
- Sensor size affects your focal length
- to avoid camera shake:
  - shutter speed = 2 x focal length
- Image Stabilization is great! If you have it, use it

**Ultimately, a photo is a  
mode of communication.**

When you take a photo,  
what are you trying to say?

Look through our social media,  
use that as a model.

**Thanks!**



# WHAT IF I'M SHOOTING VIDEO?

**TIM BEDWELL**  
**VIDEO DIRECTOR**



## CAMERA MENU SETTINGS

# FILE SPECIFICATIONS

- **File Type**
  - Camera may have only one option
  - MP4 most universal
  - MOV also compatible
- **Compression**
  - AVC-Intra/All-I vs IPB
- **Resolution**
  - SOCC final videos are always 1080P (1,920 horizontal x 1,080 vertical)
  - Is a 4K upgrade in the future?

## CAMERA MENU SETTINGS

# FILE SPECIFICATIONS

- **Frame Rate**
  - All videos we make are at 30 fps (frames per second)
    - Technically 29.97 fps
  - Record at either 30 fps or 60 fps
    - 30 fps records smaller files
      - Most situations
    - 60 fps for half-speed option (smooth slow motion)
      - High energy or speed (sports, races, games, concerts, etc.)

## COLOR ACCURACY

# WHITE BALANCE

- Auto white balance (AWB) is usually fine.
- You can use the presets if you're shooting in just one location.
- Main thing is to avoid being on the wrong setting.

PHOTOGRAPHY RULES APPLY HERE TOO

# EXPOSURE TRIANGLE

- **Shutter Speed**
  - Exposing the sensor longer for each frame increases image brightness.
  - No effect on picture noise or depth of field.
  - **Slower speeds increase motion blur.**
- **Iris**
  - A larger opening (aperture) lets in more light, increasing brightness.
  - No effect on motion blur or picture noise.
  - Lower F-stops reduce depth of field (more selective focus).
- **ISO**
  - Boosts sensor sensitivity to make an image brighter.
  - No effect on motion blur or depth of field.
  - **Higher ISOs result in more picture noise.**

# Some Examples









## RECOMMENDED SETTINGS

# EXPOSURE TRIANGLE

- **Step 1: Set Shutter Speed**
  - Natural motion blur is half the frame duration.
  - Since each frame is 1/30 second, use 1/60 second.
- **Step 2: Set Iris**
  - Open as far as possible before raising ISO
  - Our lenses (and most consumer/prosumer models) don't produce an overly shallow depth of field
- **Step 3: Set ISO**
  - ISO 100 (the lowest amount) if iris is not fully open
  - Raise as needed once iris is fully open, watching out for noise at high ISOs.

## SHOOTING QUALITY FOOTAGE

# CHECKLIST

- **Fundamentals: the 3Fs**
  - F-Stop
  - Focus
  - Framing
- **The content itself**
  - Is the shot visually interesting?
  - Does the shot flatter the subject?
  - Is anything in the shot distracting or awkward?
- **If the camera is moving, is it smooth?**
  - Monopod or Gimbal
  - Editing software can stabilize to an extent

## FINAL THOUGHTS

# A COUPLE RANDOM TIPS

- **Record at least a couple seconds after you think a shot is done.**
  - Better to have and not need
  - Could be faded out or dissolved
- **Have an extra battery on hand.**
  - Battery meter can overestimate the remaining charge level