





**KEY PICTURES
TO CAPTURE
ON SUNDAY
MORNINGS**

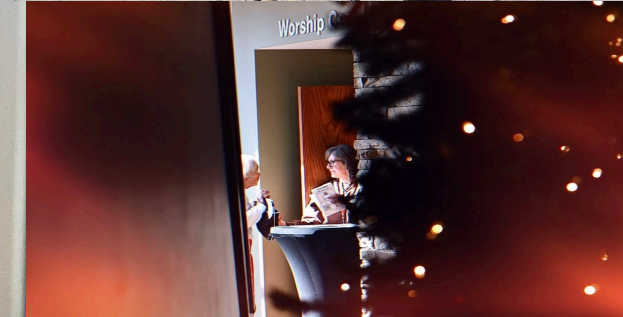




SPEAKER PHOTOS



VOLUNTEERS





WORSHIP LEADERS



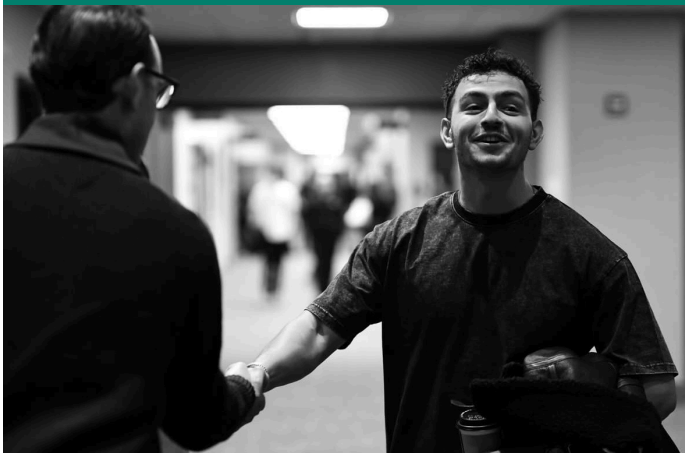


PASTORS WITH THE CONGREGATION

PEOPLE/ PLACES YOU MAY RECOGNIZE



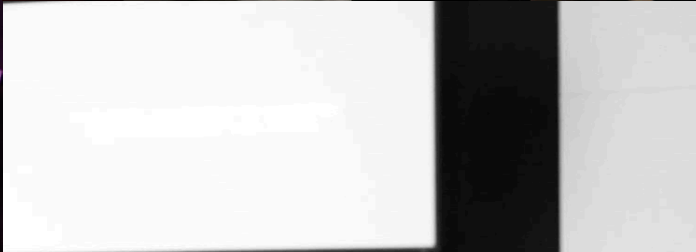
SMILING/HUGGING /CONNECTION IN THE LOBBY



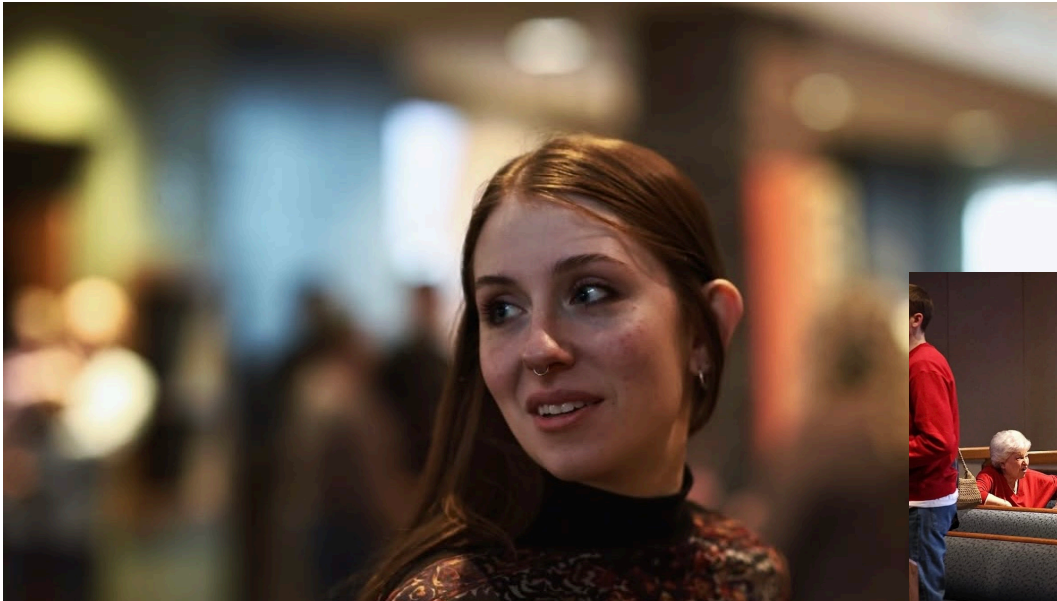
1/18

20

ALL M
FRIENDS
RE



**QUIET
MOMENTS/
RAW, REAL**



Most relevant ▾



Kenzie Ramey · 3w
Beautiful 🥰 [Eden Alderdice-Parker](#)

Reply Hide ❤️ 1 👍 💬



Joshua-Eden Parker · 3w · ❤️ by Author
[Kenzie Ramey](#) thank you!!! I was so surprised when I was scrolling through this post and saw myself 😂😂

Reply Hide ❤️ 2 👍 💬

View 1 reply

Most relevant is selected, so some comments may have been filtered out.

REPRESENTATION



victorialeeder 2w · ❤️ by author
[@ashton.renee.21](#) we got sniped AGAIN

Reply Hide ❤️ 2



ashton.renee.21 2w · ❤️ by author
[@victorialeeder](#) we're just casually the two with the MOST dramatic facial expressions at church 😂

Reply Hide ❤️ 2



eversyn 2w · ❤️ by author

🔥 Reply Hide ❤️ 1

Canon DSLR Controls & Settings Explained

Learn How to Use Your Camera with Confidence



MENU BUTTON #1

Opens camera settings menu
Adjust settings like:

- Image Quality (RAW/JPEG)
- Beep
- Aspect Ratio
- Grid Display
- And more options organized into tabs



INFO BUTTON #2

- Cycles through display screens
- Shows aperture, shutter speed, ISO
- May include mode descriptions



START/STOP BUTTON#3

- Switch between photo and video mode

- Press to start/stop recording



AF/ON BUTTON #4



- Activates focus using back button
- Faster, more precise focusing

AE LOCK/ ZOOM OUT #5



- Locks exposure settings
- Prevents camera from changing brightness

ZOOM IN/ AF POINT SELECTION #6



- Zoom in to check detail
- Change focus point while shooting

QUICK CONTROL/ Q BUTTON #7



- Opens quick settings menu
- Allows fast adjustments

PLAYBACK BUTTON #8



- Review photos and videos
- Scroll through images

QUICK CONTROL DIAL #9



- Main navigation tool
- Adjust settings and move through menus
- Press **SET** to confirm

DELETE/TRASH BUTTON #10



- Deletes photos during playback
- Confirmation usually required

LOCK SWITCH #11



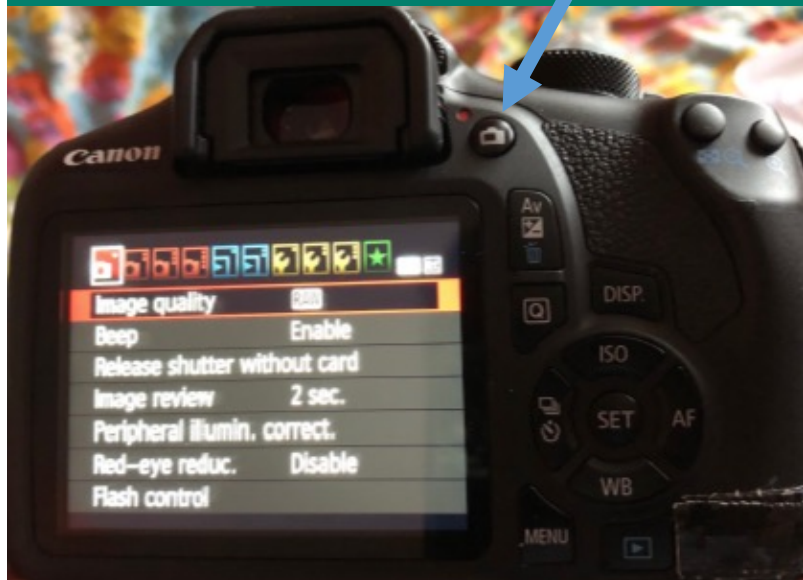
- Prevents accidental setting changes
- Disables buttons/dials when turned on
- *Camera may not have this feature*

SHUTTER BUTTON

- Used to take the photo
- Press halfway to **focus the camera**
- Press fully to **capture the image**

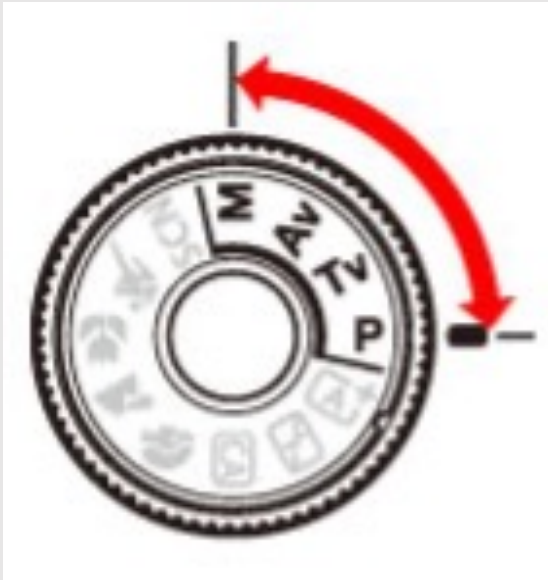


VIEWFINDER BUTTON



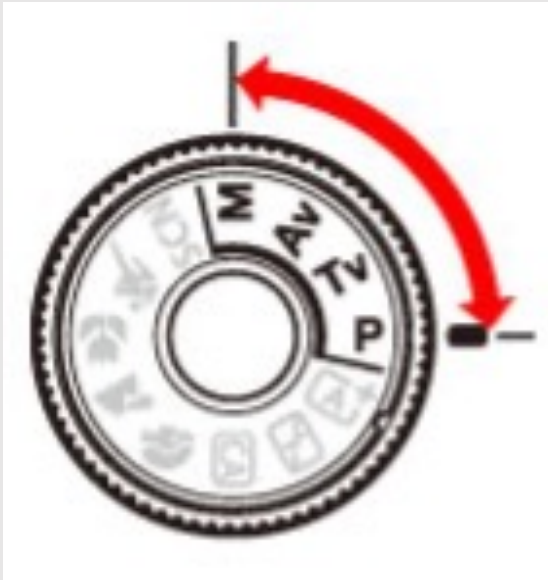
- Switches between viewfinder and LCD screen
- *Some older models may include this feature*

DIAL MODES



- **M (Manual):** full control
- **Av (Aperture Priority):** control aperture (background blur)
- **Tv (Shutter Priority):** control shutter speed (motion)
- **P (Program):** camera sets exposure, you adjust some settings
- **A+ (Auto):** camera controls everything
- **Flash Off:** same as auto, but no flash
- **CA (Creative Auto):** simple control over blur and brightness
- **Portrait (👤 woman icon):** blurs background, good for people
- **Landscape (🏔️ mountains):** sharp focus throughout, good for scenery
- **Close-Up (🌸 flower):** for small subjects, like details or objects
- **Sports (🏃 running person):** fast shutter speed for motion
- **SCN (Scene):** more preset shooting options

WHAT MODE SHOULD YOU USE?



M (Manual): full control over your settings

- Best for consistent lighting (like church services)
- Can still switch lens to auto focus

Auto: quick and easy when you don't have time to adjust

Sport (🏃): fast-moving photography

- Great for quick moments like hugs or interactions in the lobby

CAMERA MODE #1

- Shows shooting mode (M, Auto, P, etc.)



EXPOSURE BASICS #2/#3/#4

- Shutter speed:
controls motion blur
- Aperture: controls
light & depth
- ISO: controls
brightness



EXPOSURE SCALE #5

- Range: -3 to +3
- 0 = correct exposure
- Negative = dark, Positive = bright



IMAGE STYLE & COLOR #6/#7

- Picture Style:
color & contrast
- White Balance:
corrects color
tone



LIGHTING ASSISTANCE #8

- Auto Lighting Optimizer brightens images
- Works in auto/semi-auto modes



FOCUS SETTING #10/#11

- Focus Mode: still vs moving subjects
- Focus Area: where camera focuses



SHOOTING SETTINGS #12/#13

- Exposure Mode:
how light is measured
- Drive Mode:
single, burst, timer



IMAGE QUALITY #14

- RAW: high quality, editable (always use RAW)
- JPEG: smaller, ready to use



CONTROLS AND CUSTOMIZATIONS #15

- Q Button: quick access menu
- Custom Controls: personalized setup



CAMERA STATUS #16/#17

- Battery level
- Images remaining



CAMERA CONNECTIONS #1/#2

- USB: connect to computer
- HDMI: connect to TV for playback



AUDIO PORTS #3/#4



- Microphone:
improves video
audio externally
- Headphones:
monitor or review
sound

REMOTE SHOOTING#5



- Remote shutter port for hands-free photos
- Helps reduce shake & take self-portraits

MEMORY STORAGE #6

- SD card stores photos
- Some cameras have dual slots
- Location on camera may vary



FRONT CAMERA#1/#2



- Pop-Up Flash: built-in flash for low light
- Lens Unlock Button: press + twist to remove lens

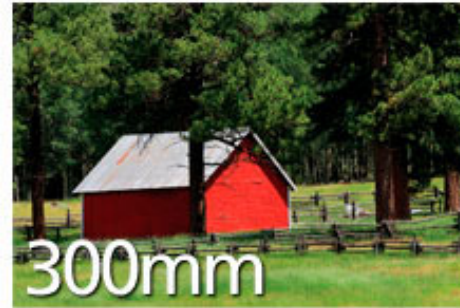
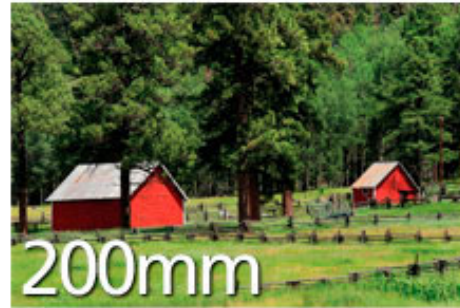
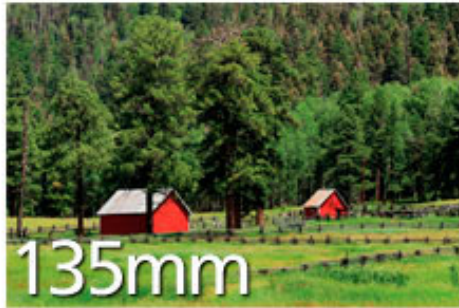
FOCAL LENGTH AND LENS USE

- Focal length (mm) determines zoom & field of view

Lens Examples (Church Use):

- 18–55mm: wide lobby shots, group photos
- 55–250mm: preaching/stage shots from a distance
- 50mm f/1.8: lobby portraits, candid moments
- 85mm f/1.4: portraits, worship shots with strong blur





LENS NOTES

- $f/1.2$ – $f/2$: best for low light (common in lobby)
- Lower f-stop = more light + blurred background
- Higher f-stop = less light + more in focus
- Kit lenses often have $f/4$ – 5.6

May include:

- Auto/Manual focus
- Image stabilization



RF vs EF LENS/COMPATIBILITY

EF: for DSLR cameras

RF: for mirrorless cameras

- EF lenses don't directly fit RF cameras
 - RF lenses don't fit DSLR cameras
 - Adapter needed for EF → RF
- RF → EF



Always check compatibility (could damage if not compatible)

