

Kountry Aire



1987



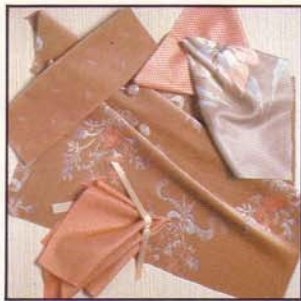


Kountry Aire is the name that Newmar Corporation was founded on and remains a consistently trusted, quality built product that RV'ers in the past and presently continue to rely on for above average durability and dependability. It's a matter of attention given to details, the little extras that keep people coming back to Kountry Aire. This high set of standards carries into our 1987 product line-up and this 37' walk-thru, raised floor/dinette model fifth wheel is a perfect example.

The #KA7-36 (Sandlewood Buff) interior shown here is just one of four beautiful options available this year in the Kountry Aire line and here are just some of the great standards and options: Standard solid oak doors and paneling • Standard polar white exterior color with earth tone graphics • Standard fiberglass front and rear caps and aluminum exterior on towables • Standard all fiberglass exteriors on motorized/optional on towables • Standard, our exclusive central air system • Standard all aluminum superstructure • Optional roll down vinyl stone guard (towables) • Standard sliding bumper tray/spare tire carrier • Stand-up bedroom (fifth wheels) • Optional power slide-outs and many more (see specs and floor plans).



#KA7-36
Sandlewood Buff



#KA7-38
Ocean Jade



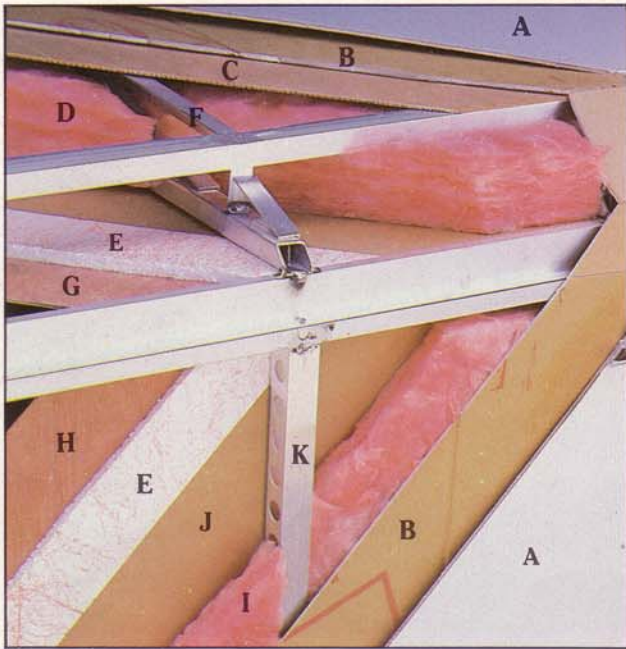
#KA7-37
Mauve Quartz



#KA7-39
Sable Brown

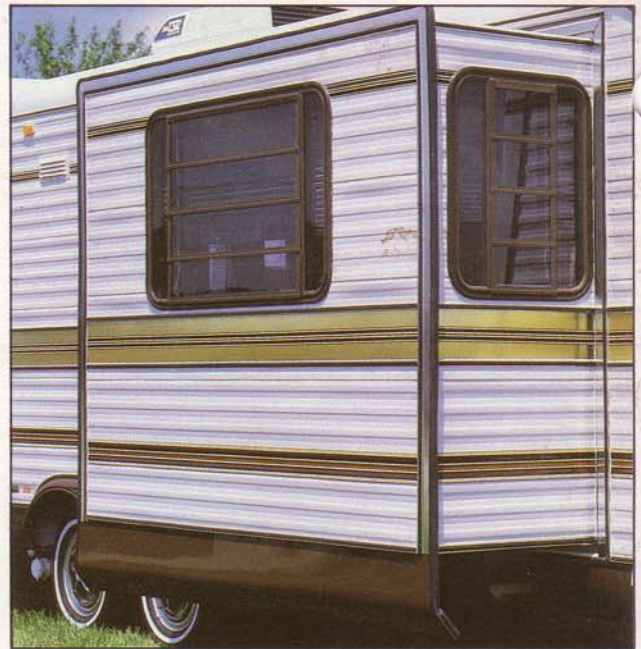


Every unit in the Kountry Aire line whether it be the Fifth Wheel, Travel Trailer, Class A Motorhome or the Mini Motorhome, includes extras, details, appearance and quality that you would expect from high-end competition. Your investment in a Kountry Aire recreational vehicle will be well spent and certainly enjoyed by you and your entire family. Comfort and convenience don't just happen! Years of experience in camping and manufacturing recreational vehicles combine to give you a camping vehicle that you can use and trust for years to come. So visit your nearest Kountry Aire dealer today for complete details and pricing and see for yourself what we mean when we say: "Kountry Aire . . . a name you can trust!"

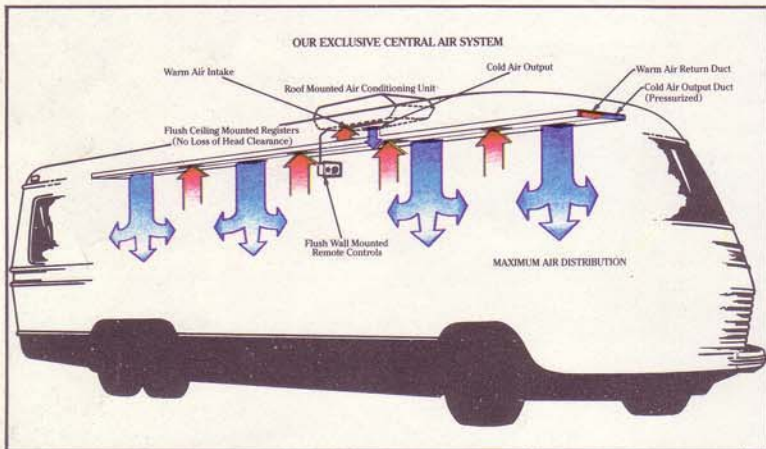
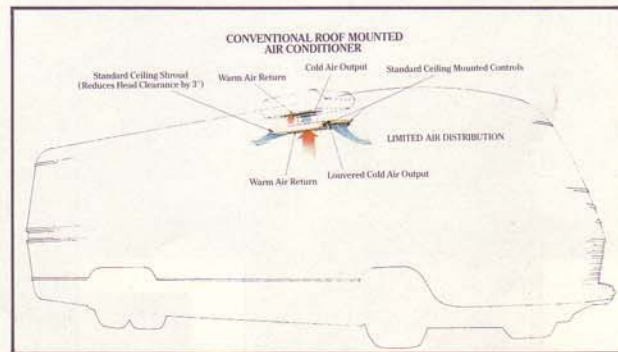


KOUNTRY AIRE ALUMINUM SUPERSTRUCTURE

- A Fiberglass or Aluminum Exterior (see specs)
- B Fome-Cor Insulation
- C Plywood Backer
- D R-10 Fiberglass Insulation
- E $\frac{5}{8}$ " Bead Foam Insulation
- F Truss Style Roof Rafter 16" Center
- G Ceiling Material
- H Interior Paneling
- I R-5 Fiberglass Insulation
- J Craft Paper
- K $1\frac{1}{2}$ " Aluminum C Channel



Optional Power Slide Out



Standard Sliding Bumper Tray/Spare Tire Carrier

Your nearest Kountry Aire dealer:



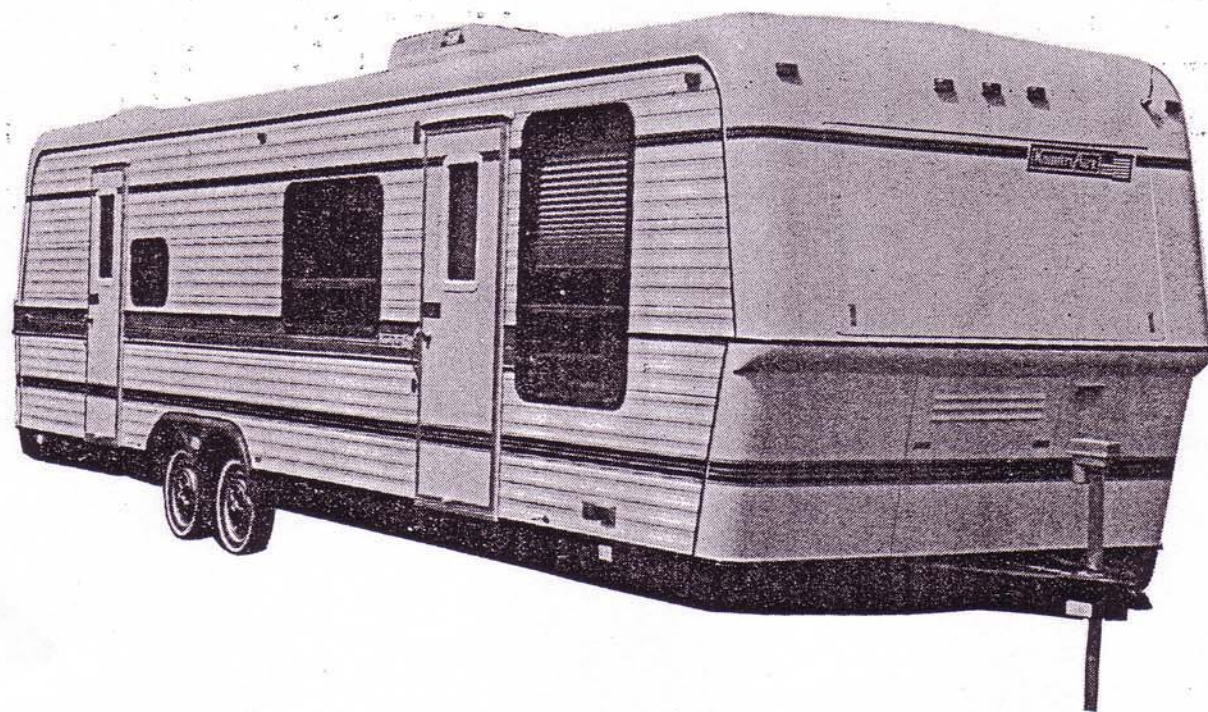
Newmar Corporation, P.O. Box 30
Nappanee, IN 46550-0030, (219) 773-7791
Scheduled plant tours Monday-Friday

Prices and specs are subject to change without written notice
at Newmar's discretion with no obligation.



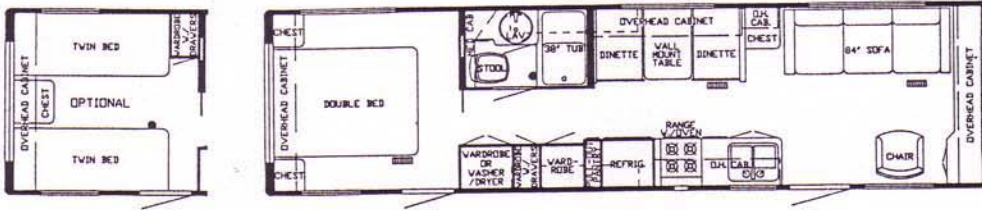
1987 TRAVEL TRAILER

SPECIFICATIONS & FLOOR PLANS

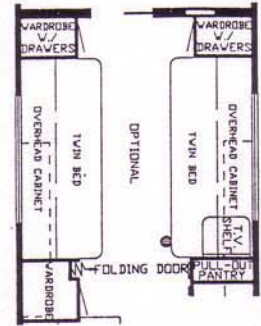


Newmar Corporation
P.O. Box 30
Nappanee, IN 46550-0030 (219) 773-7791

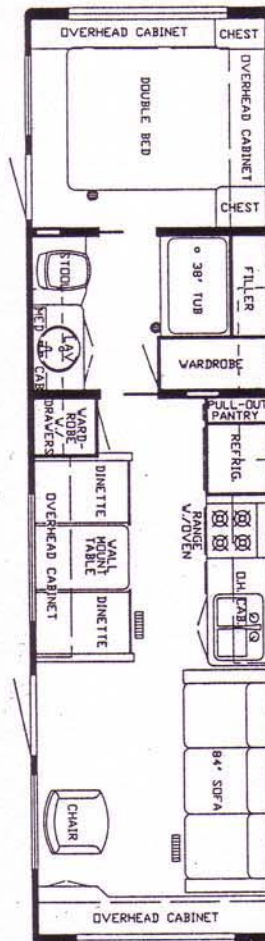
35 CBD



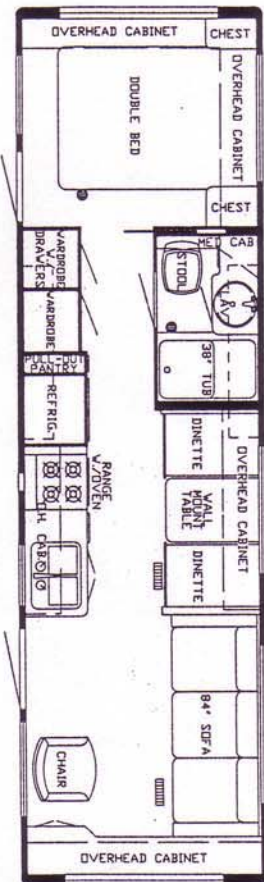
33 RBD



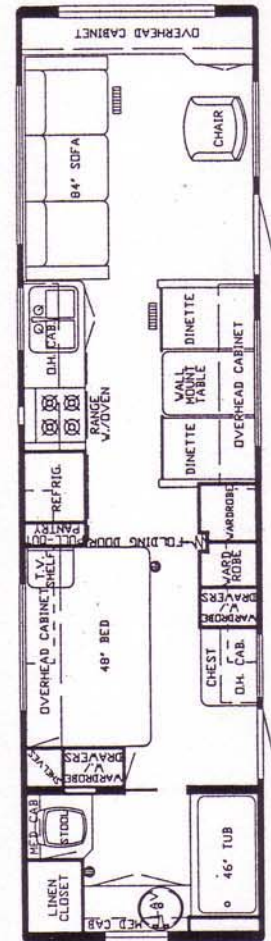
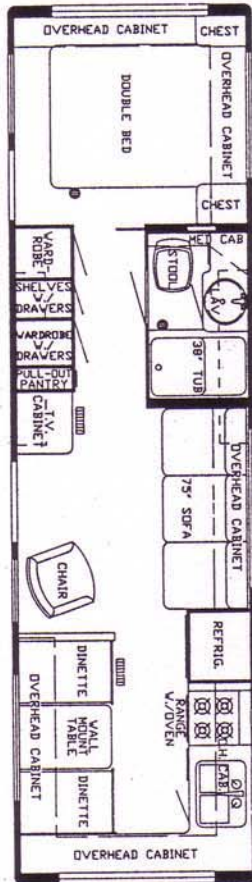
33 CBD



31 CBD



31 FKD



DIMENSIONS	31 CBD	31 FKD	33 CBD	33 RBD	35 CBD
Gross Dry Weight	6,600	6,600	6,800	6,800	6,900
Hitch Dry Weight	700	700	800	800	800
Axle Dry Weight	5,900	5,900	6,000	6,000	6,100
Gvwr	8,000	8,000	8,500	8,500	8,500
Interior Height	6'6"	6'6"	6'6"	6'6"	6'6"
Exterior Height w/Air	10'3"	10'3"	10'3"	10'3"	10'3"
Width	7'9"	7'9"	7'9"	7'9"	7'9"
Length	31'10"	31'10"	33'9"	33'9"	34'10"
Sleeping Accomodations	6	6	6	6	6

KOUNTRY AIRE TRAVEL TRAILERS STANDARD EQUIPMENT

AIR CONDITIONING, HEATING & LP GAS

Air Conditioning 13.5 central * Heat Under Floor Ducted * Furnace 35M Electronic Ignition (31'-35") * Air Conditioning Prep for Regulator * L.P. Gas Bottles 2-30# Steel w/Auto Reg.

APPLIANCES & ACCESSORIES

Bathroom Accessories Package (towel bar/soap dish/tissue holder/towel ring) * Towel Rack in Bath Area (where Appl) * Faucet for Sink Single Handle Mixing Chrome Tone * Faucet for Lavatory Double Handle Mixing (Chrome Tone) * Faucet for Shower Double Handle Mixing w/Spigot (Chrome Tone) * Sink Deep Double Stainless Steel * Sink Large Lavatory * Sink Covers Laminated (1) * Stool Aqua Magic * Tub/Shower Fiberglass * Water Heater Gas/Elect 10 Gal. * Microwave Prep * Range 4-Burner 22" w/Top Pilot/Oven * Range Cover Bi-Fold Deluxe * Range Hood w/Light & Fan * Refrigerator Dometic 3800 AES (110V-Gas)(31' & up)

CABINETS & FURNITURE

Bed Double (75") * Headboards Decorative * Spring Lifts for Convenient Under-bed Storage (queen, Double & bed) * Sofa Bed Free Standing * Sofa Bed Built In * Bookcase Angle Cabinet w/TV Shelf (Oak) * Cabinet China * Cabinet Medicine * Cabinet Night Stand * Cabinetry Oak w/Raised Panel Doors * Catches Spring * Doors under Dinette for Easy Access * Drawer w/Silverware Tray * Hamper/Storage * Pantry Slide-out * Dinette w/Flex-a-lator & Fabric Covered Ends * Wardrobe Shirt

ELECTRICAL & LIGHTING EQUIPMENT

Antenna for Radio * Antenna for TV & 2 Jacks * Battery 80 AMP * Battery Box on Slides * Converter 40 AMP w/Charger * Electrical Service 30 AMP * Lights 10" Behind Glass Doors * Light Fixture Deluxe Over Dinette * Lights in Wardrobe Auto. * Lights Backup * light Exterior w/Inside Switch * Lights for Hook-up Convenience * Light Running & Backup Recessed * Light for Service * Lighting 12V Fluorescent * Monitor Panel Deluxe w/Clock * Radio AM/FM Stereo w/Cassette 4 Speakers (CB Models 6 Speakers) * Recept 110V GFI (interior & exterior) * TV Shelf w/Remote Switch (bedroom)

EXTERIOR ACCESSORIES

Bumper Rear Auto Style w/Storage Compartment * Exterior Front & Rear Fiberglass * LP Gas Bottles Concealed * Step Double Manual w/Non Skid Surface * Storage Exterior Slide Out Drawer 48"

INTERIOR FEATURES

Cabinet Doors w/Decorative Etched Glass * Carpet w/Pad Throughout * Ceiling Vinyl Clad * Mirror w/Decorative Wood Frame * Paneling Oak Hardwood * Paneling Textured Light Color in Bedroom * Paneling Decorative Vinyl in Bath Area * Wall Decorative Vinyl in Living Area * 6'6" Interior Height * Window Treatment Soft Shade Blinds w/Tie Back Drapes/Valance (living area) * Window Treatment Coordinated Roller Shades w/Tie Back Drapes/Valance (bedroom) * Window Treatment Mini Blinds Kitchen & Bath Windows

PLUMBING SYSTEMS

Tank Gray Water 48 Gal * Tank Sewage Holding 48 Gal * Water Capacity 42 Gal * Water System Demand with 5/8" Polybutylene Lines * Hook-up for City Water

RUNNING GEAR & CONSTRUCTION

Axle 4" Drop w/12" Electric Brakes * Floor 1" Laminated Plywood * Frame Size 8" I-Beam * Insulation 1/4" Fome-Cor on Exterior Sidewalls * Insulation Additional R5 Fiberglass in Sidewalls, Roof & Floor * Insulation Laminated 5/8" Foam in Sidewalls & Ceiling * Jack Stabilizer (set of 4) * Jack for Hitch (2000#) * Shock Absorbers * Skid Straps * Spare Tire, Wheel, in Slide Out Tray * Structure Aluminum 16" Centers Sidewalls & Roof * Underbelly Enclosed w/Lam. 5/8" Foam * Wheels 15" White Spoked

SAFETY FEATURES

Break Away Switch * Fire Extinguisher 5 BC * Safety Chains * Smoke Detector

WINDOWS, DOORS, AWNINGS & VENTS

Awning Front Recessed * Awning Rail * Door Woven Folding * Door Entrance 30" w/Flush Latch & Dead Bolt Lock * Door Secondary 26" * Door Screen * Door Bell * Grab Handle * Dead Bolt Locks * Vent in Bath Area w/Wall Switch 12V * Windows Radius Torqued Tinted Safety Glass * Window Radius Picture 30" x 48" at Dinette

KOUNTRY AIRE TRAVEL TRAILER OPTIONAL EQUIPMENT

AIR CONDITIONING, HEATING L.P. GAS

Air Conditioning Extra 13.5 Central w/wiring
Furnace next Size Larger ILO Std.
L.P. Gas Bottles 2-40# ILO 30# Steel w/Auto Reg
L.P. See Level Guages

APPLIANCES & ACCESSORIES

Sink Larger Double Stainless Steel ILO Std.
Tub 40" w/Remainder Wardrobe ILO Std
Rod For Clothes in Tub/Shower
Water Heater Bypass Kit
Reignitor 12V for 10 Gal w/Heater
Water Purifying System (Sink Cold & Ice maker)
Food Center Nutone (blender & mixer)
Grill Gas Portable
Ice Maker (110V)
Ice Maker Prep
Microwave Oven (Magic Chef)
Microwave Oven Spacemaker G.E.
Microwave Oven Convection w/4 Burner Plate ILO Std.
Safe
Vacuum System Portable
Water Heater Bypass
Washer & Dryer
Washer & Dryer Prep - Plumbing, Elec/Recept & Shelf

CABINETS & FURNITURE

Bed Twin ILO Double
Bed Queen (where applicable)(60"x 80")
Bunk Stationary 32" w/5" foam Mattress
Cabinet Overhead Extra
Chair(s) Swivel Rocker ILO Std.
Chair Wood Folding
Counter Top Extension
Drawers Wooden w/Metal Guides & Side Rollers
Bar (Table Height)
Dinette Free Standing w/2 Chairs ILO Built-In
Table Hi-Lo
Table Wall Mount

ELECTRICAL & LIGHTING EQUIPMENT

Battery 80 AMP Deep Cycle ILO Std(Sears Die Hard)
Batteries 80 AMP Deep Cycle ILO Std-2(Sears Die Hard)
Electrical Service 50 AMP ILO 30
Intercom System
Lights Exterior Security (ea)
Plug & Bracket for Tow Vehicle
Recept 110V (extra)
Switch 110V (extra)
TV Color AC/DC w/Remote Control
TV Jack Extra
TV Cable Hook up
Telephone Jack
VCR w/Newmar Tape
VCR prep

EXTERIOR ACCESSORIES

Exterior Sides Fiberglass
Ladder w/Hinge & Roof Rack
Slide Out 94" w/Lights
Slide Out 74" w/Lights
Stone Guard Pull Down Vinyl
Storage Exterior Slide Out Drawer 29"
Storage Extra Exterior Slide Out Drawer 29"
Storage Roof Pod 10 cu./ft.
Storage Roof Pod 21 cu./ft.

INTERIOR FEATURES

Bedsprad(s) Quilted w/Matching Sham Twin
Bedsprad(s) Quilted w/Matching Sham Double
Bedsprad(s) Quilted w/Matching Sham Queen
Floor Covering Vinyl ILO of Carpet
Ceiling Vinyl Automotive Headliner ILO std.
Paneling Wood Grain Throughout (Oak)

PLUMBING SYSTEMS

Heat Pads for Holding Tanks
Sewage Rinse

RUNNING GEAR & CONSTRUCTION

Jack(s) for Hitch 12V power
Jack(s) prep 12V wire
Tires Radial ILO Std. (set of 5)

SAFETY FEATURES

Customer Pick up
Fire Extinguisher 10 BC ILO 5 BC
LP Leak Detector (In Line)

WINDOWS, DOORS, AWNINGS & VENTS

Awning Rear Recessed
Power for recessed Awning
Awning(s) Window Off Door Side (ea)(A&E 8000)
Awning(s) Window Off Door Side (ea)(A&E 9000)
Awning Side (A&E 8000)
Awning Side (A&E 9000)
Center Support for Side Awning
Door Bell
Vent in Roof 12V
Window Rad. Picture 48"x24"
Window Rad. Picture 48"x36"
Window Rad. Picture 48"x48"
Windows Storm Set (29'-40')
Windows Storm Set for Slide Out
Skylight in Bathroom

Prices and Specifications are subject to change
without Notification.



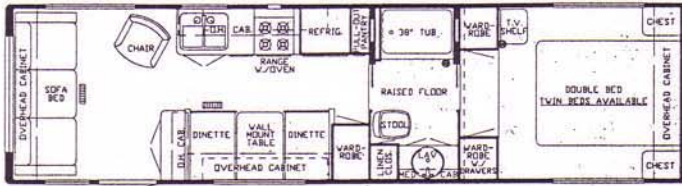
1987 FIFTH WHEEL

SPECIFICATIONS & FLOORPLANS

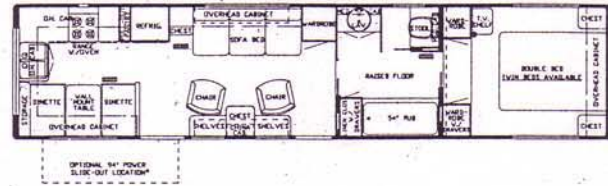


Newmar Corporation
P.O. Box 30
Nappanee, IN 46550-0030 (219) 773-7791

29 WRFD



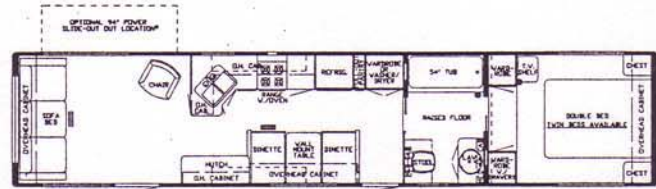
35 WRKD



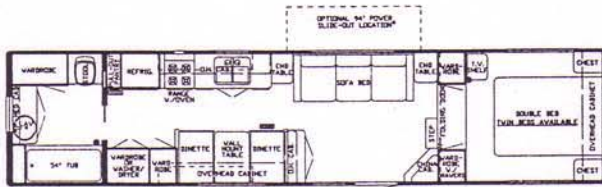
32 WRFD



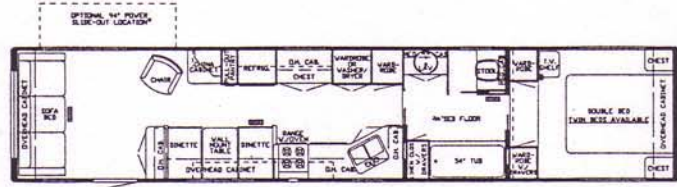
37 WRFD



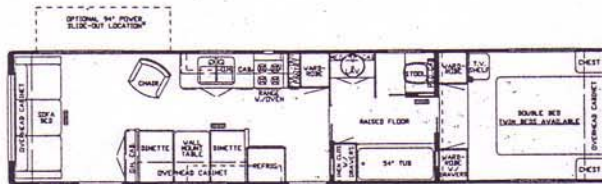
35 RBD



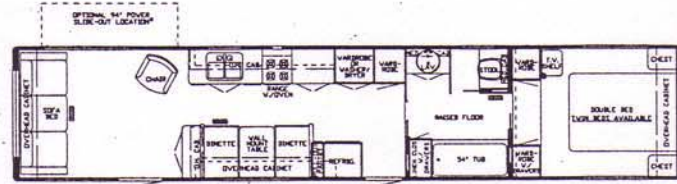
40 WDKD



35 WRFD



40 WRFD



DIMENSIONS	29 WRFD	32 WRFD	35 RBD	35 WRFD	35 WRKD	37 WRFD	40 WDKD	40 WRFD
Gross Dry Weight	7200	7600	8300	8300	8300	8800	9000	9000
Hitch Dry Weight	1200	1400	1400	1400	1400	1400	1400	1400
Axle Dry Weight	6000	6200	6900	6900	6900	7400	7600	7600
Gvwr	8500	9000	10200	10200	10200	11600	12000	12000
Height w/Air	10'10"	10'10"	10'10"	10'10"	10'10"	10'10"	10'10"	10'10"
Width	7'9"	7'9"	7'9"	7'9"	7'9"	7'9"	7'9"	7'9"
Length	30'8"	32'9"	35'10"	35'10"	35'10"	38'6"	39'10"	39'10"
Sleeping Accomodations	6	6	6	6	6	6	6	6

KOUNTRY AIRE FIFTH WHEELS STANDARD EQUIPMENT

AIR CONDITIONING, HEATING & LP GAS

Air Conditioning 13.5 central * Heat Under Floor Ducted * Furnace 32M Electronic Ignition (35M in 31'-35')
41M (37' & up) * LP Gas Bottles 2-30# Steel w/Auto Reg.

APPLIANCES & ACCESSORIES

Bathroom Accessories Package (towel bar/soap dish/tissue holder/towel ring) * Towel Rack in Bath Area (where Appl) * Faucet for Sink Single Handle Mixing (Chrome Tone) * Faucet for Lavatory Double Handle Mixing (Chrome Tone) * Faucet for Shower Double Handle Mixing w/Spigot (Chrome Tone) * Sink Deep Double Stainless Steel * Sink Large Lavatory * Sink Covers laminated (1) * Stool Aqua Magic * Tub/Shower Fiberglass * Water Heater Gas/Elect 10 Gal. * microwave Prep * Range 4-Burner 22" w/Top Pilot/Oven * Range Cover Bi-Fold Deluxe * Range Hood w/Light & Fan * Refrigerator Dometic 763 AES (110V - Gas) (up-29') * Refrigerator Dometic 3800 AES (110V - Gas) (31' & up)

CABINETS & FURNITURE

Bed Double (75") * Headboards Decorative * Spring Lifts for Convenient Under-bed Storage (queen, Double & bed) * Sofa Bed Free Standing * Sofa Bed Built In * Cabinet China * Cabinet Medicine * Cabinet Night Stand * Cabinetry Oak w/Raised Panel Doors * Catches Spring * Chair Free Standing Pedestal (RKD only) * Doors under Dinette for Easy Access * Drawer w/Silverware Tray * Hamper/Storage * Pantry Slide-out * Dinette w/Flex-a-lator & Fabric Covered Ends wardrobe w/Angle Upper/Lower Cabinet Door Side (RB & CB)

ELECTRICAL & LIGHTING EQUIPMENT

Antenna for Radio * Antenna for TV & 2 Jacks * Battery 80 AMP * Battery Box on Slides * Converter 40 AMP w/Charger * Electrical Service 30 AMP * Lights 10" Behind Glass Doors * Light Fixture Deluxe Over Dinette * Lights in Wardrobe Auto. * Lights Backup * light Exterior w/Inside Switch * Lights for Hook-up Convenience * Light Running & Backup Recessed * Light for Service * Lighting 12V Fluorescent * Monitor Panel Deluxe w/Clock * Radio AM/FM Stereo w/Cassette 4 Speakers (CB Models 6 Speakers) * Recept 110V GFI (interior & exterior) * TV Shelf w/Remote Switch

EXTERIOR ACCESSORIES

Bumper Rear Auto Style w/Storage Compartment * Exterior Front & Rear Fiberglass * LP Gas Bottles Concealed * Step Double Manual w/Non Skid Surface * Storage Exterior Compartment (1) * Storage Exterior Slide Out Drawer 48"

INTERIOR FEATURES

Cabinet Doors w/Decorative Etched Glass * Carpet w/Pad Throughout * Ceiling Vinyl Clad * Mirror w/Decorative Wood Frame * Paneling Oak Hardwood * Paneling Textured Light Color in Bedroom * Paneling Decorative Vinyl in Bath Area * Wall Decorative Vinyl in Living Area * Stand Up Bedroom Area * 6'6" Interior Height window Treatment Soft Shade Blinds w/Tie Back Drapes/Valance (living area) * Window Treatment Coordinated Roller Shades w/Tie Back Drapes/Valance (Bedroom) * Window Treatment Mini Blinds Kitchen & Bath Windows

PLUMBING SYSTEMS

Tank Gray Water 48 Gal * Tank Sewage Holding 48 Gal * Water Capacity 42 Gal * Water System Demand with 5/8" Polybutylene Lines * Hook-up for City Water

RUNNING GEAR & CONSTRUCTION

Axle Straight Tandem w/12" Brakes * Floor 1" Laminated Plywood * Frame Size 8" I-Beam * Hitch Plate & Bracket * Insulation 1/4" Fome-Cor on Exterior Roof * Insulation 1/4" Fome-Cor on Exterior Roof * Insulation R% Fiberglass in Sidewalls, Roof & Floor * Insulation Additional R5 Fiberglass in Roof & Floor * Insulation Laminated 5/8" Foam in Sidewalls & Ceiling * Jack Stabilizer (set of 2) * Shock Absorbers * Skid Straps * Spare Tire, Wheel, in Slide Out Tray * Structure Aluminum 16" Centers Sidewalls & Roof * Tires 8.55 x 15 W/W * Underbelly Enclosed w/Lam. 5/8" Foam * Wheels 15" White Spoke

SAFETY FEATURES

Break Away Switch * Fire Extinguisher 5 BC * Smoke Detector

WINDOWS, DOORS, AWNINGS & VENTS

Awning Rail * Door Wood Folding * Door Entrance 30" w/Flush Latch & Dead Bolt Lock * Door Secondary 24" * Door Screen * Grab Handle * Dead Bolt Locks * Vent in Bath Area w/Wall Switch 12V * Window Frosted Glass 15" x 24" Bathroom * Windows Radius Torqued Tinted Safety Glass * Window Radius Picture 30" x 48" at Dinette

KOUNTRY AIRE FIFTH WHEEL OPTIONAL EQUIPMENT

AIR CONDITIONING, HEATING & L.P. GAS

Air Condition Extra 13.5 Central w/wiring
Furnace Next Size Larger ILO Std.
L.P. Gas Bottles 2-40# ILO 30# Steel w/Auto Reg.

APPLIANCES & ACCESSORIES

Sink Larger Double Stainless Steel ILO Std.
Tub 40" w/Remainder Wardrobe ILO Std
Rod For Clothes in Tub/Shower
Water Heater Bypass Kit
Reignitor 12V for 10 Gal w/Heater
Water Purifying System (Sink Cold & Ice maker)
Food Center Nutone (blender & mixer)
Grill Gas Portable
Ice Maker (110V)
Ice Maker Prep
Microwave Oven (Magic Chef)
Microwave Oven Spacemaker G.E.
Microwave Oven Convection w/4 Burner Plate ILO Std.
Refrigerator Dometic 3800 AES ILO 763 (110V-Gas)(up-29)
Safe
Vacuum System Portable
Washer & Dryer
Washer & Dryer Prep - Plumbing, Elec/Recept & Shelf

CABINETS & FURNITURE

Bed Twin ILO Double
Bed Queen (where applicable)(60"x 80")
Bunk Stationary 32" w/5" foam Mattress
Bookcase Angle Cabinet w/TV shelf
Cabinet Overhead Extra
Chair(s) Free Standing Swivel Rocker ILO Std.
Chair Wood Folding
Counter Top Extension
Drawers Wooden w/Metal Guides & Side Rollers
Entertainment Center
Bar (Table Height)
Dinette Free Standing w/2 Chairs ILO Built-In
Table Hi-Lo
Table Wall Mount
Wardrobe ILO Front Door (WT only)

ELECTRICAL & LIGHTING EQUIPMENT

Battery 80 AMP Deep Cycle ILO Std
Batteries 80 AMP Deep Cycle ILO Std-2(Sears Die Hard)
Electrical Service 50 AMP ILO 30
Generator 4.0kw Onan w/1 remote Sw & Auto Changover
Generator 6.5kw Onan w/1 remote Sw & Auto Changover
Generator Prep(auto changeover, wire & door)
Generator Prep complete w/Gas Tank
LP Gas Conversion for Generator
Intercom System
Lights Exterior Security (ea)
Plug & Bracket for Tow Vehicle
Recept 110V (extra)
Switch 110V (extra)
Switch Shut-off for Bedroom Speakers
TV Color AC/DC w/Remote Control

TV Jack Extra
TV Cable Hook up
Telephone Jack
VCR w/Newmar Tape
VCR prep

EXTERIOR ACCESSORIES

Exterior Sides Fiberglass
Ladder w/Hinge & Roof Rack
Slide Out 94" w/Lights
Slide Out 74" w/Lights
Stone Guard Pull Down Vinyl
Storage Exterior Slide Out Drawer 29"
Storage Extra Exterior Slide Out Drawer 29"
Storage Roof Pod 10 cu./ft.
Storage Roof Pod 21 cu./ft.

INTERIOR FEATURES

Bedsread(s) Quilted w/Matching Sham Twin
Bedsread(s) Quilted w/Matching Sham Double
Bedsread(s) Quilted w/Matching Sham Queen
Floor Covering Vinyl ILO of Carpet
Ceiling Vinyl Automotive Headliner ILO std.
Paneling Wood Grain Throughout (Oak)

PLUMBING SYSTEMS

Heat Pads for Holding Tanks
Sewage Rinse

RUNNING GEAR & CONSTRUCTION

Hitch Plate & Bracket (48 or 54)
Hitch Installation Fifth Wheel
Jacks Stabilizer Extra (set of 2)
Jack(s) for Hitch 12V power
Jack(s) prep 12V wire
Stabilizer Fifth Wheel Pin
Tires Radial ILO Std. (set of 5)
Tires Radial ILO Std. (set of 7)

SAFETY FEATURES

Customer Pick up
Fire Extinguisher 10 BC ILO 5 BC
LP Leak Detector (In Line)

WINDOWS, DOORS, AWNINGS & VENTS

Awning Rear Recessed
Power for recessed Awning
Awning(s) Window Off Door Side (ea)(A&E 8000)
Awning(s) Window Off Door Side (ea)(A&E 9000)
Awning Side (A&E 8000)
Awning Side (A&E 9000)
Center Support for Side Awning
Door Bell
Vent in Roof 12V
Window Rad. Picture 48"x24"
Window Rad. Picture 48"x36"
Window Rad. Picture 48"x48"
Windows Storm Set (29'-40')
Windows Storm Set for Slide Out
Skylight in Bathroom

Prices and Specifications are subject to change
without Notification.



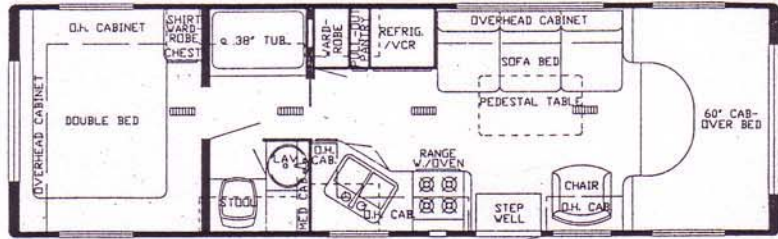
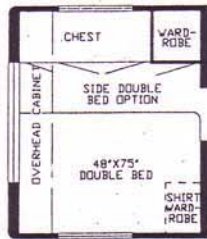
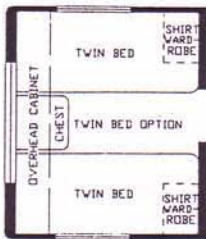
1987 MINI HOMES

SPECIFICATIONS & FLOOR PLANS

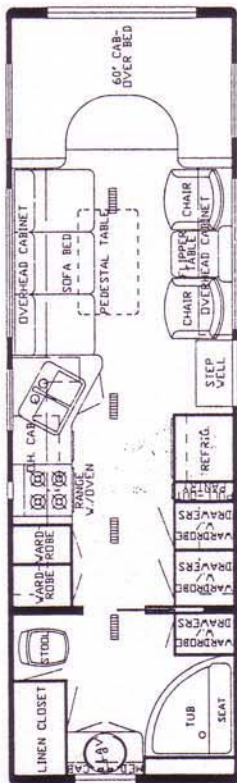


Newmar Corporation
P.O. Box 30
Nappanee, IN 46550-0030 (219) 773-7791

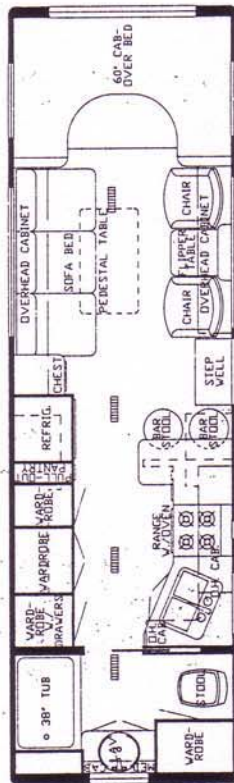
28 WCB



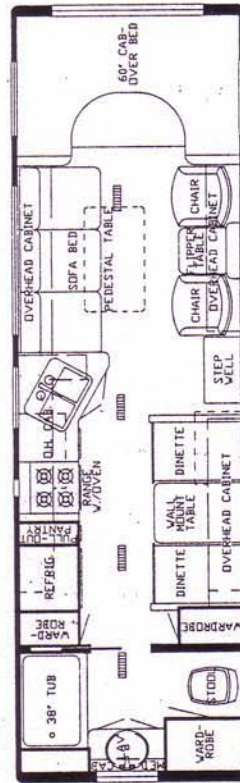
28 RB



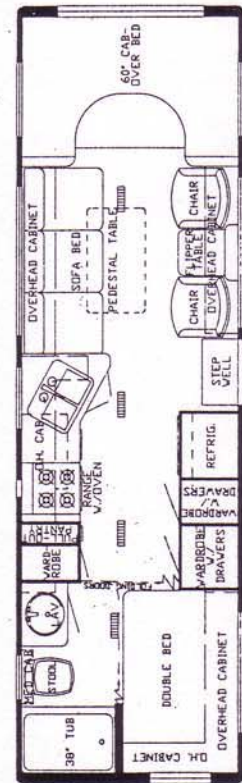
28 RBB



28 RBD



28 SB



DIMENSIONS	28 RB	28 RBB	28 RBD	28 SB	28 WCB
Gross Dry Weight	11,600	11,600	11,600	11,600	11,600
Front Axle Weight	3,600	3,600	3,600	3,600	3,600
Rear Axle Weight	8,000	8,000	8,000	8,000	8,000
Gvwr	13,000	13,000	13,000	13,000	13,000
Interior Height	6'6"	6'6"	6'6"	6'6"	6'6"
Exterior Height w/Air	10'10"	10'10"	10'10"	10'10"	10'10"
Width	7'9"	7'9"	7'9"	7'9"	7'9"
Length	28'5"	28'5"	28'5"	28'5"	28'5"
Wheel Base	176"	176"	176"	176"	176"
Sleeping Accomodations	4	4	6	6	6

KOUNTRY AIRE MINI HOMES STANDARD EQUIPMENT

AIR CONDITIONING, HEATING & LP GAS

Air Conditioning 13.5 central * Heat Under Floor Ducted * Furnace 32M Electronic Ignition (28'-29') * L.P.
Gas Tank 15 Gal. * Air Conditioning Prep for Reg.(w/wiring)

APPLIANCES & ACCESSORIES

Bathroom Accessories Package (towel bar/soap dish/tissue holder/towel ring) * Robe Hook * Towel Rack in
Bath Area (where Appl) * Faucet for Sink Single Handle Mixing (Chrome Tone) * Faucet for Lavatory Double
Handle Mixing (Chrome Tone) * Faucet for Shower Double Handle Mixing w/Spigot (Chrome Tone) * Sink Deep
Double Stainless Steel * Sink Large Lavatory Cultured Marble * Sink Covers Laminated (1) * Stool Aqua Magic
* Tub/Shower Fiberglass * Water Heater Gas 6 Gal. w/Electric Ignition * Microwave Prep (Range 4-Burner 22"
w/Top Pilot/Oven * Range Cover Bi-Fold Deluxe * Range Hood w/Light & Fan * Refrigerator Dometic 763 AES
(110V-gas)(up-29')

CABINETS & FURNITURE

Bed Double (75") * Headboards Decorative * Sofa Bed Built In * Cabinet Medicine * Cabinet Night Stand *
Cabinetry Oak w/Raised Panel Doors * Catches Spring * Chair(s) Barrel * Doors or Drawers under Dinette for
Easy Access * Drawer w/Silverware Tray * Pantry Slide-out * Dinette w/Flex-a-lator & Fabric Covered Ends *
Snack Tray on Engine Cover w/Cassette Holder * Table Between Barrel Chairs * Table Free Standing Pedestal

CHASSIS FEATURES

Brakes Power * Cruise Control * Gasoline Fuel Capacity 42 Gal.(Ford) * Heater/Air Conditioner High Output
Automotive * Power Door Locks * Power Windows * Power Steering * Steering Wheel Tilt * Tinted Windshield *
Automatic Transmission

ELECTRICAL & LIGHTING EQUIPMENT

Antenna for Radio * Antenna for TV & 2 Jacks * Battery 80 AMP * Battery Automotive * Battery Isolator *
Clock for AM/FM Stereo * Converter 40 AMP w/Charger * Electrical Service 30 AMP * Generator 4.0kw Onan w/1
Remote Switch & Auto Changeover * Lights 10" Behind Glass Doors * Lights in Wardrobe Auto. * Lights Backup *
light Exterior w/Inside Switch * Lights Running & Backup Recessed * Lighting 12V Fluorescent * Monitor Panel
Deluxe w/Clock * Radio AM/FM Stereo w/Cassette 4 Speakers (CB Models 6 Speakers) * Recept 110V GFI (interior
& exterior)

EXTERIOR ACCESSORIES

Bumper Front Auto Style * Bumper Rear Auto Style w/Storage Compartment * Exterior Front & Rear Fiberglass *
Exterior Sides Fiberglass * Mirrors Exterior * Running Boards Aluminum * Step Double 12V Auto. w/Non Skid
Surface * Storage Compartment under Bed w/Exterior Door * Storage Exterior Slide Out Drawer 29"

INTERIOR FEATURES

Cabinet Doors w/Decorative Etched Glass * Carpet w/Pad Throughout * Ceiling Woven Soft Touch * Door Header
Cushioned * Mirror w/Decorative Wood Frame * Paneling Oak Hardwood * Paneling Textured Light Color in
Bedroom * Paneling Decorative Vinyl in Bath Area * 6'6" Interior Height * Privacy Drapes (lined) for
Windshield * Window Treatment Soft Shade Blinds w/Tie Back Drapes/Valance(living area) * Window Treatment
Coordinated Roller Shades w/Tie Back Drapes/Valance(Bedroom) * Window Treatment Mini Blinds Kitchen & Bath
Windows

PLUMBING SYSTEMS

Tank Gray Water 25 Gal * Tank Sewage Holding 25 Gal * Water Capacity 42 Gal * Water System Demand with 5/8"
Polybutylene Lines * Hook-up for City Water

RUNNING GEAR & CONSTRUCTION

Floor 1" Laminated Plywood * Insulation 1/4" Fome-Cor on Exterior Roof * Insulation 1/4" Fome-Cor in
Sidewalls, Roof & Floor * Insulation Additional R5 Fiberglass in Roof & Floor * Insulation Laminated 5/8"
Foam in Sidewalls & Ceiling * Jack Hydraulic (6 ton) * Mud Flaps (front & rear) * Shock Absorbers * Spare
Tire, Wheel, in Slide Out Tray * Structure Aluminum 16" Centers Sidewalls & Roof * Suspension Mor-Ryde Tag
Axle * Tires Radial (Ford) * Wheel Covers Decorative Deluxe

SAFETY FEATURES

Fire Extinguisher 5 BC * Seat Belts * Shoulder Straps (Driver & Pass Seats) * Smoke Detector

STANDARD SPECIFICATIONS CONTINUED

WINDOWS, DOORS, AWNINGS & VENTS

Awning Rail * Door Wood Folding * Door Entrance 26" w/Flush Latch & Dead Bolt Lock * Door Screen * Grab
Handle * Dead Bolt Locks * Vent in Bath Area w/Wall Switch 12V * Windows Radius Slider Tinted Safety Glass *
Window Radius Picture 30" x 48" at Dinette * Screens-Sliding

KOUNTRY AIRE MINI HOME OPTIONAL EQUIPMENT

AIR CONDITIONING, HEATING & LP GAS

Furnace Next Size Larger ILO of Std
Dual Fuel Conversion w/41 Gal. LP Tank-Ex Ca

APPLIANCES & ACCESSORIES

Rod For Clothes in Tub/Shower
Water Heater Bypass Kit
Water Purifying System (Sink cold & Ice maker)
Food Center Nutone (blender & mixer)
Grill Gas Portable
Ice Maker (110V)
Ice Maker Prep
Microwave Oven (Magic Chef)
Microwave Oven Spacemaker G.E.
Microwave Oven Convection w/4 Burner Plate ILO Std.
Refrigerator Dometic 3800 AES ILO 763 (110V-Gas)(up-
29)
Safe
Vacuum System Portable

CABINETS & FURNITURE

Bed Twin ILO Double
Counter Top Extension
Drawers Wooden w/Metal Guides & Side Rollers

ELECTRICAL & LIGHTING EQUIPMENT

Battery 80 AMP Deep Cycle ILO Std (Sears Die Hard)
Batteries 80 AMP Deep Cycle ILO Std-2(Sears Die
Hard)
Battery Disconnecter
CB Radio w/Antenna
Generator 4.0kw Onan w/1 Remote Sw & Auto
Changeover
LP Gas Conversion for Gen.

Lights fog
Lights Docking
Lights Interior Courtesy
Lights Exterior Security (ea)
Radio Jack & Headphone
Recept 110V (extra)
Switch 110V (extra)
TV Color AC/DC Built in
TV Jack Extra
TV Cable Hook up
Telephone Jack
VCR w/Newmar Tape
VCR prep

EXTERIOR ACCESSORIES

Ladder & Roof Rack
Running Boards Fiberglass
Storage Roof Pod 10 cu./ft.
Storage Roof Pod 21 cu./ft.

INTERIOR FEATURES

Bedspring(s) Quilted w/Matching Sham Twin
Bedspring(s) Quilted w/Matching Sham Double
Ceiling Vinyl Automotive Headliner ILO Soft Touch
Paneling Wood Grain Throughout (Oak)

RUNNING GEAR & CONSTRUCTION

Hitch for Towing Car w/Wire Connector

SAFETY FEATURES

Customer Pick up
Fire Extinguisher 10 BC ILO 5 BC
LP Leak Detector (In Line)

WINDOWS, DOORS, AWNINGS & VENTS

Awning(s) Window Off Door Side (ea)(A&E 8000)
Awning(s) Window Off Door Side (ea)(A&E 9000)
Awning Side (A&E 8000)
Awning Side (A&E 9000)
Center Support for Side Awning
Door Bell
Vent in Roof 12V
Skylight in Bathroom

Prices and Specifications are subject to change
without Notification.



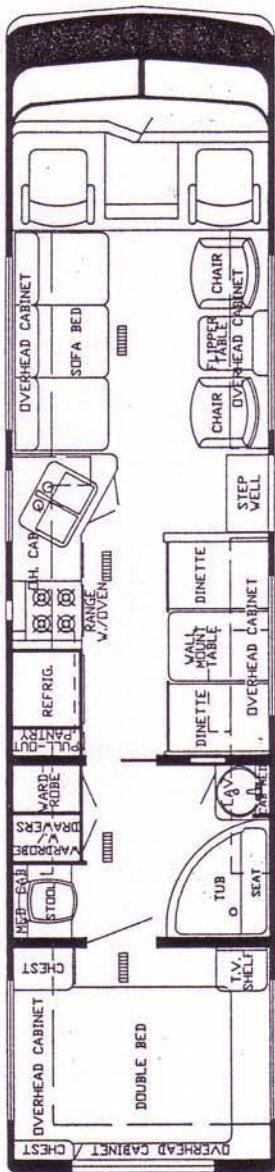
1987 CLASS A MOTORHOME

SPECIFICATIONS & FLOOR PLANS

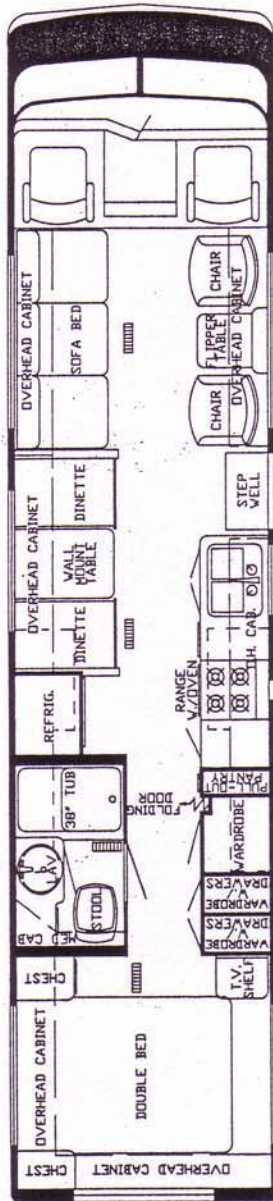


Newmar Corporation
P.O. Box 30
Nappanee, IN 46550-0030 (219) 773-7791

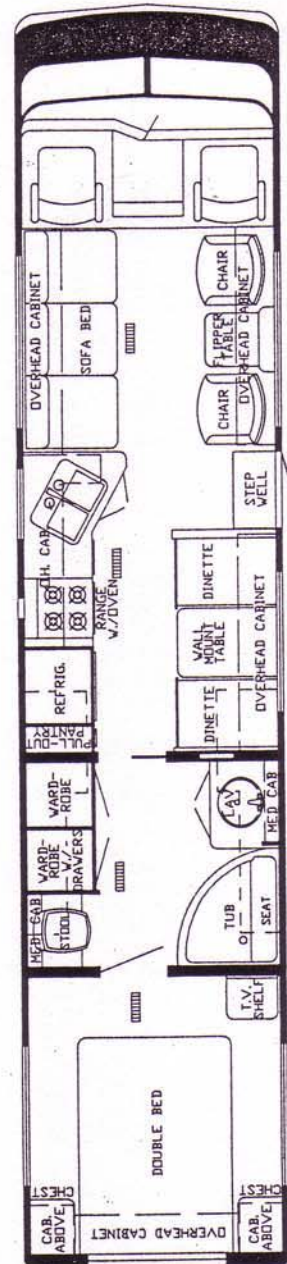
33 WCBD



35 CBD



37 WCBD



DIMENSIONS	33 WCBD	35 CBD	37 WCBD
Gross Dry Weight	14,000	14,000	14,000
Front Axle Weight	4,200	4,200	4,200
Rear Axle Weight	9,800	9,800	9,800
Gvwr	18,500	18,500	18,500
Interior Height	6'6"	6'6"	6'6"
Exterior Height w/Air	11'1"	11'1"	11'1"
Width	7'9"	7'9"	7'9"
Length	34'7"	35'6"	37'5"
Wheel Base	178"	178"	200"
Sleeping Accomodations	6	6	6

KOUNTRY AIRE CLASS A MOTORHOME STANDARD EQUIPMENT

AIR CONDITIONING, HEATING & LP GAS

Air Conditioning 13.5 central * Heat Under Floor Ducted * Furnace 35M Electronic Ignition (31'-35')
Excalibur (37') * L.P. Gas Tank 15 Gal. * Dual Fuel Conversion w/64 Gal. LP Tank (except California)

APPLIANCES & ACCESSORIES

Bathroom Accessories Package (brass towel bar/soap dish/tissue holder/towel ring) * Towel Rack in Bath Area (where Appl) * Faucet for Sink Single Handle Mixing (Chrome Tone) * Faucet for Lavatory Double Handle Mixing (Chrome Tone) * Faucet for Shower Double Handle Mixing w/Spigot (Chrome Tone) * Sink Deep Double Stainless Steel * Sink Large Lavatory * Sink Covers Laminated (1) * Stool Aqua Magic * Tub/Shower Fiberglass * Water Heater Gas 6 Gal. w/Electric Ignition * Range 4-Burner 22" w/Top Pilot/Oven * Range Cover Bi-Fold Deluxe * Range Hood w/Light & Fan * Refrigerator Dometic 3800 AES (110V - Gas) (31'-up)

CABINETS & FURNITURE

Bed Double (75") * Headboards Decorative * Spring Lifts for Convenient Under-bed Storage(queen/double beds)
* Sofa Bed Built In * Cabinet Medicine * Cabinet Night Stand * Cabinetry Oak w/Raised Panel Doors * Catches Spring * Chair(s) Barrel * Chair Recliner * Driver Seat 6-way Power & Recliner * Doors under Dinette for Easy Access * Drawer w/Silverware Tray * Pantry Slide-out * Dinette w/Flex-a-lator & Fabric Covered Ends * Snack Tray on Engine Cover w/Cassette Holder * Table Between Barrel Chairs * Table Free Standing Pedestal

CHASSIS FEATURES

Brakes Power * Cruise Control * Gasoline Fuel Capacity 78 Gal. * Heater/Air Conditioner High Output Automotive * Power Steering * Steering Wheel Custom Padded Leather * Steering Wheel Tilt * Tinted Windshield * Automatic Transmission * Transmission Cooler

ELECTRICAL & LIGHTING EQUIPMENT

Antenna for Radio * Antenna for TV & 2 Jacks * Battery 80 AMP Deep Cycle (Sears Die Hard) * Battery Automotive * Battery Isolator * Clock for AM/FM Stereo * Converter 40 AMP w/Charger * Electrical Service 30 AMP * Horn Trumpet * Lights 10" Behind Glass Doors * Light Fixture Deluxe Over Dinette * Lights Interior Courtesy * Lights in Wardrobe Auto. * Lights Backup * Lights Docking * light Exterior w/Inside Switch * Light under Hood * Light on Roof Remote Controlled(spot/flood) * Lights Running & Backup Recessed * Light for Service-Off Door Side * Lighting 12V Fluorescent * Monitor Panel Deluxe w/Clock * Radio AM/FM Stereo w/Cassette 4 Speakers (CB Models 6 Speakers) * Recept 110V GFI (interior & exterior) * Switch Auxiliary Start * TV Color AC/DC Built-in * TV Shelf w/Remote Switch

EXTERIOR ACCESSORIES

Bumper Front Auto Style * Bumper Rear Auto Style w/Storage Compartment * Exterior Front & Rear Fiberglass * Exterior Sides Fiberglass * Ladder & Roof Rack * Mirrors Exterior Defrost * Spoiler in the Front * Step Double 12V Auto. w/Non Skid Surface * Storage Exterior Slide Out Drawer 48" * Storage Exterior Slideout Drawer 29" * Storage Extra Exterior Slideout Drawer 29"

INTERIOR FEATURES

Cabinet Doors w/Decorative Etched Glass * Carpet w/Pad Throughout * Ceiling Woven Soft Touch * Door Header Cushioned * Mirror w/Decorative Wood Frame * Paneling Oak Hardwood * Paneling Textured Light Color in Bedroom * Paneling Decorative Vinyl in Bath Area * 6'6" Interior Height * Privacy Drapes (lined) for Windshield * Window Treatment Soft Shade Blinds w/Tie Back Drapes/Val. * Window Treatment Coordinated Roller Shades w/Tie Back Drapes/Val.(Bdrm) * Window Treatment Mini Blinds Kitchen & Bath Window

PLUMBING SYSTEMS

Tank Gray Water 35 Gal * Tank Sewage Holding 40 Gal(55 Gal/33' CBD-37' CBD) * Water Capacity 54 Gal * Water System Demand with 5/8" Polybutylene Lines * Hook-Up for City Water

RUNNING GEAR & CONSTRUCTION

Floor 1" Laminated Plywood * Insulation 1/4" Fome-Cor on Exterior Roof * Insulation R5 Fiberglass in Sidewalls, Roof & Floor * Insulation Additional R5 Fiberglass in Roof & Floor * Insulation Laminated 5/8" Foam in Sidewalls & Ceiling * Jack Hydraulic (6 ton) * Jacks Hydraulic Leveling * Mud Flaps (front & rear) * Shock Absorbers * Shock Absorbers 4-way on Front * Spare Tire, Wheel, in Slide Out Tray * Structure Aluminum 16" Centers Sidewalls & Roof * Suspension Mor-Ryde Tag Axle * Tires Polyester - Chevy Chassis * Wheel Simulators Deluxe Stainless - Set of 6

STANDARD EQUIPMENT CONTINUED.

SAFETY FEATURES

Fire Extinguisher 10 BC * Seat Belts * Smoke Detector

WINDOWS, DOORS, AWNINGS & VENTS

Awning Rail * Door Wood Folding * Door Driver Side w/Dead Bolt Lock * Door Entrance 26" w/Flush Latch & Dead Bolt Lock * Door Screen * Grab Handle * Dead Bolt Locks * Vent in Bath Area w/Wall Switch 12V * Windows Radius Slider Tinted Safety Glass * Window Radius Picture 30" x 48" at Dinette * Screens-Sliding

KOUNTRY AIRE CLASS A OPTIONAL EQUIPMENT

AIR CONDITIONING, HEATING & LP GAS

Air Conditioner Extra 13.5 Central w/Wiring
Heater Auxiliary in Bedroom
Furnace Next Size Larger ILO of Std
Dual Fuel Conversion w/64 Gal. LP Tank-Ex Ca

APPLIANCES & ACCESSORIES

Rod For Clothes in Tub/Shower
Water Heater Bypass Kit
Water Purifying System (Sink cold & Ice maker)
Food Center Nutone (blender & mixer)
Grill Gas Portable
Ice Maker (110V)
Ice Maker Prep
Microwave Oven (Magic Chef)
Microwave Oven Spacemaker G.E.
Microwave Oven Convection w/4 Burner Plate ILO Std.
Refrigerator Dometic 3800 AES ILO 763 (110V-Gas)(up-29)
Safe
Vacuum System Portable
Washer & Dryer
Washer/Dryer Prep-Plumbing, Elec/Recept & Shelf

CABINETS & FURNITURE

Bed Twin ILO Double
Bed Queen (60"x80")
Seat Passenger 6-way Power & Recliner
Counter Top Extension
Drawers Wooden w/Metal Guides & Side Rollers

ELECTRICAL & LIGHTING EQUIPMENT

Batteries 80 AMP Deep Cycle ILO Std-2(Sears Die Hard)
Battery Disconnecter
CB Radio w/Antenna
Cord Electrical w/Auto Rewind
Fans Defroster Driver & Passenger
Generator 6.5kw Onan w/2 Remote Sw & Auto Changeover
LP Gas Conversion for Gen.
Lights fog
Lights Docking
Lights Exterior Security (ea)
Radio Jack & Headphone
Recept 110V (extra)

Switch 110V (extra)
TV Color AC/DC w/remote control
TV Jack Extra
TV Cable Hook up
TV Monitor Closed Circuit Rear View
Telephone Jack
VCR w/Newmar Tape
VCR prep

EXTERIOR ACCESSORIES

Ladder & Roof Rack
Mirrors Exterior w/Remote Control & Defrost
Roof Fiberglass
Storage Roof Pod 10 cu.ft.
Storage Roof Pod 21 cu.ft.

INTERIOR FEATURES

Bedsread(s) Quilted w/Matching Sham Twin
Bedsread(s) Quilted w/Matching Sham Double
Bedsread(s) Quilted w/Matching Sham Queen
Ceiling Vinyl Automotive Headliner ILO Soft Touch
Paneling Wood Grain Throughout (Oak)

PLUMBING SYSTEMS

Water hose w/Auto Rewind w/City Water Hook-up

RUNNING GEAR & CONSTRUCTION

Hitch for Towing Car w/Wire Connector
Jacks Auto Hydraulic Leveling ILO of Std.
Tires Radial (set of 8)
Wheels Polished Aluminum - Set of 6

SAFETY FEATURES

Customer Pick up
Fire Extinguisher 10 BC ILO 5 BC
LP Leak Detector (In Line)

WINDOWS, DOORS, AWNINGS & VENTS

Awning(s) Window Off Door Side (ea)(A&E 8000)
Awning(s) Window Off Door Side (ea)(A&E 9000)
Awning Side (A&E 8000)
Awning Side (A&E 9000)
Center Support for Side Awning
Door Bell
Vent in Roof 12V
Skylight in Bathroom

Prices and Specifications are subject to change without Notification.