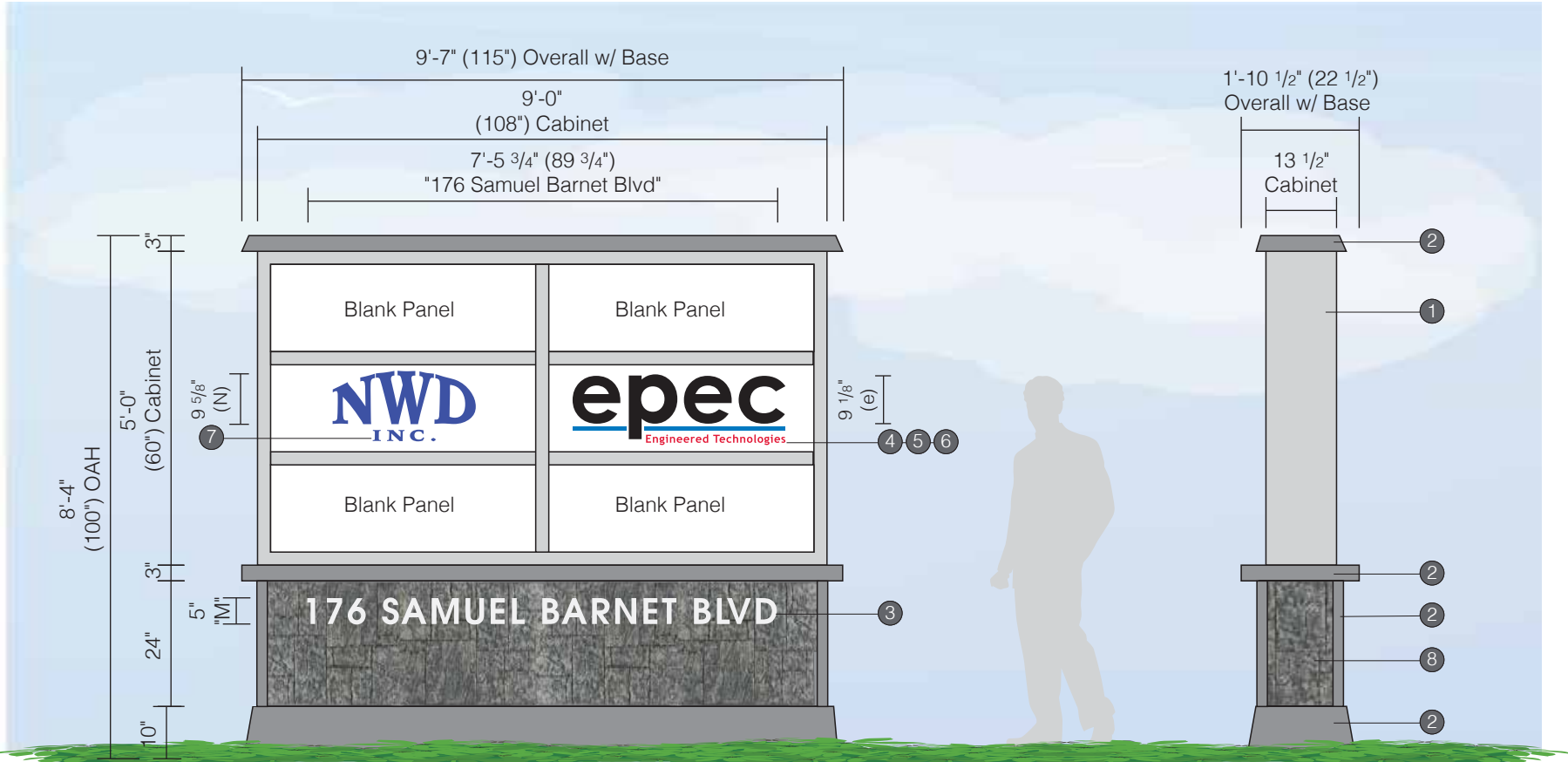


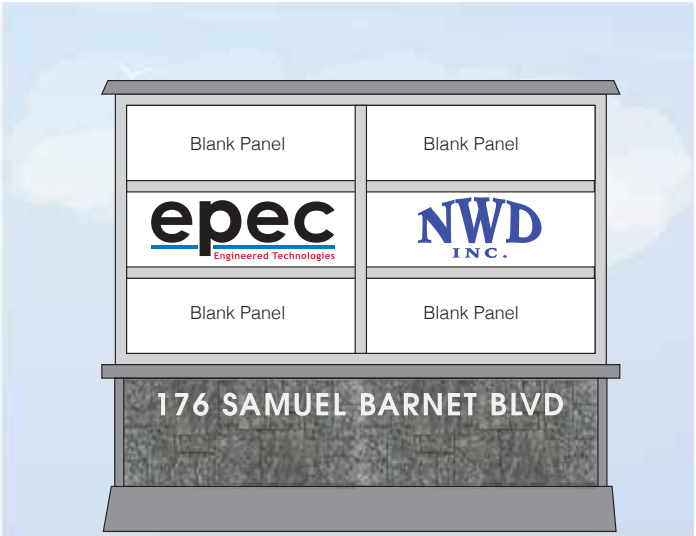
Parallel Products | 61 John Vertente Boulevard, New Bedford, MA | Design Development | April 26, 2022

---



A Sign Elevation - Front View Side A  
Scale: 3/8"=1'-0"

B Sign Elevation - Side View  
Scale: 3/8"=1'-0"



C Sign Elevation - Front View Side B  
Not To Scale

\*Tenant placement on each side needs to be confirmed

Specifications

Qty = 1 75 Sq Ft

Double Sided Internally Illuminated Monument Sign

- Cabinet:
- 13½" deep Large A cabinet w/ 2½" flat retainers and divider bars painted gray
  - Top trim to be custom bent .063 aluminum painted dark gray
  - 3/16" White polycarbonate tenant faces w/ translucent vinyl graphics applied 1st surface
  - White LED illumination

- Base:
- Base to be 1½" x 1½" x ¾" aluminum angle frame clad w/ faux gray stone
  - Base cap to be 3" x 3" x 1/8" aluminum tube painted dark gray
  - Base corners to be 2" x 2" x ¾" aluminum angle painted dark gray
  - Base bottom to be 1½" x 1½" x ¾" aluminum angle frame clad w/ .063 aluminum painted dark gray
  - Address Letters to be ½" Thick White routed acrylic letters
  - Backs to be drilled and tapped with studs; mounted flush to base

- Poles & Foundations:
- (Qty: 2) 4" diameter SCH 40 poles (4½" OD); 11'-9" OAH
  - (Qty: 2) Foundations to be 4'-0" deep x 2'-3" Wide x 3'-6" Windload

\*Sign to be staked prior to install

- Provided By Others** - All below to be provided by others
- 120V Primary electrical brought to sign location
  - External ground lighting for address on base by others
  - Primary electrical connection by others

- Customer to Approve**
- Customer to approve logo color specs or provide logo standard vinyl color spec

- VIF
- Confirm tenant panels are in the same location on both sides (Mirror image?)
  - Confirm any setback requirements
  - Confirm electrical provided will be street side or other side

Colors & Materials

- |   |   |
|---|---|
| 1 | Paint<br>Gray; Satin Finish, Akzo Nobel FLNA 7209<br><i>Cabinet &amp; Retainers</i>       |
| 2 | Paint<br>Dark Gray; Satin Finish, Akzo Nobel FLNA 7207<br><i>Decorative Elements</i>      |
| 3 | Paint<br>White; Satin Finish<br><i>Address Graphics</i>                                   |
| 4 | Translucent Vinyl<br>Black; 3M 3630-22<br><i>epec Graphics</i>                            |
| 5 | Translucent Vinyl<br>Cardinal Red; 3M 3630-53<br><i>Engineering Technologies Graphics</i> |
| 6 | Translucent Vinyl<br>Intense Blue; 3M 3630-127<br><i>epec Rule Line</i>                   |
| 7 | Translucent Vinyl<br>Bristol Blue; 3M 3630-97 SS<br><i>NWD Graphics</i>                   |
| 8 | Faux Stone<br>Hand Cut Block Light Gray<br>(Qty: 7 Panels) 47¾" W x 24" L                 |



125 Samuel Barnett Boulevard  
New Bedford, MA 02745  
800.544.0961 | poyantsigns.com

Parallel Products

61 John Vertente Boulevard  
New Bedford, MA

Project: 14560  
Parallel Products

Sales: Bethany Leonard  
Date: 03.14.18  
Designer: LR

Note:  
This is an original unpublished drawing created by Poyant Signs, Inc. It is submitted for your personal use in connection with a project being planned for you by Poyant Signs, Inc. It is not to be shown to anyone outside your organization, nor is it to be reproduced, copied or exhibited in any fashion until transferred.

Revisions:  
12.28.18 CC R3 - Option Added to Package  
4.26.22 LR R5 changed to 6 tenant spaces, internally illuminated & double sided

UL  
This sign is intended to be installed in accordance with the requirements of Article 600 of the National Electrical Code and / or other applicable local codes. This includes proper grounding and bonding of the sign.

Approved By:

Date:

Internally Illuminated  
Monument Sign

Option D

Sign Type 14560.3D-R5

3D.1  
1 of 2





**D** Photo Comp - Existing Side A - West Approach  
Not to Scale



**E** Photo Comp - Existing Side B - East Approach  
Not to Scale




**F** Photo Comp - Proposed Side A - West Approach  
Not to Scale



**G** Photo Comp - Proposed Side B - East Approach  
Not to Scale

Note:  
This is an original unpublished drawing created by Poyant Signs, Inc. It is submitted for your personal use in connection with a project being planned for you by Poyant Signs, Inc. It is not to be shown to anyone outside your organization, nor is it to be reproduced, copied or exhibited in any fashion until transferred.

12.28.18 CC R3 - Option Added to Package  
4.26.22 LR R5 changed to 6 tenant spaces, internally illuminated & double sided

  
This sign is intended to be installed in accordance with the requirements of Article 600 of the National Electrical Code and / or other applicable local codes. This includes proper grounding and bonding of the sign.