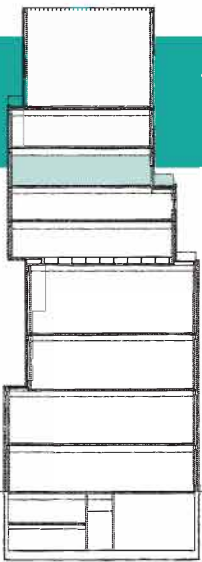


7th Floor/ Toby Devan Lewis Sky Room

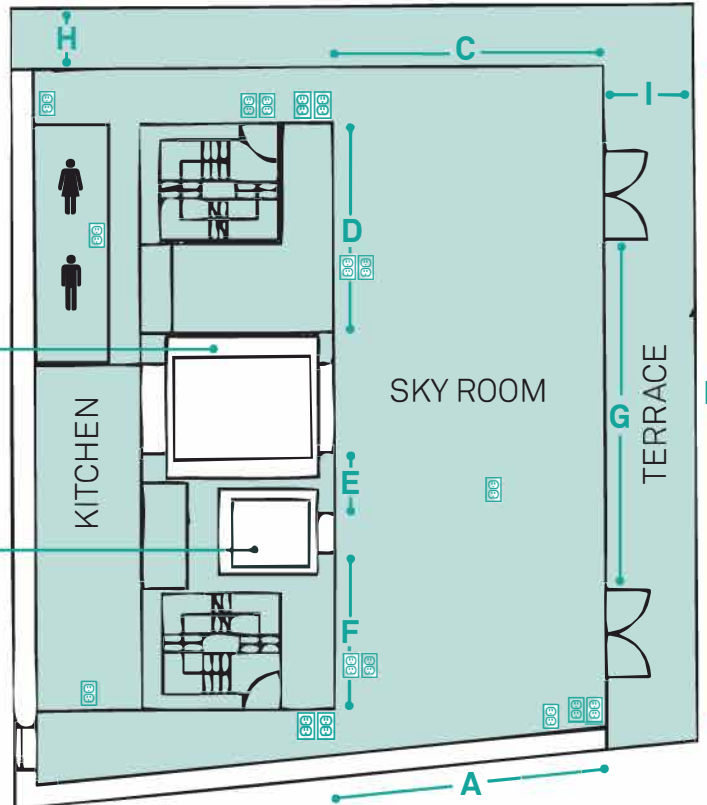


LARGE ELEVATOR

- 12' high x 8'10" wide x 10'9" deep
- Load capacity: 12,000 lbs
- Maximum size crate allowed through loading entrance is 9'x9'
- Passenger and freight

SMALL ELEVATOR

- 10' high x 5'8" wide x 6'5" deep
- Load capacity: 3,500 lbs
- Dedicated passenger



MEASUREMENTS

- A** 23' 6"
- B** 51' 8"
- C** 23' 6"
- D** 21' 8"
- E** 5'4"
- F** 14' 3"
- G** 31' 7"
- H** 7'
- I** 4' 5"

Capacity= 110 seated
200 cocktails
Ceiling height = 11' high

OUTLETS* ELECTRICAL

*Information on additional electrical power available upon request.