

# Review of Scallop Framework26

**Deirdre Boelke, NEFMC Staff,  
Scallop PDT Chair**

**Scallop AP and Cmte  
October 28/29, 2014**



New England  
Fishery Management Council

# Outline of Agenda

1. Review FW26 projection results (Doc #4)
2. Review recent PDT input on FW26 measures and potentially take action on those eight items (list on back cover of FW26 – yellow highlighted areas). PDT meeting notes (Document #3).
3. Review Enforcement Committee input (2 consensus statements)
4. Review updated analyses for VMS corridor (Doc#6) and potential seasonal closure of MA AAs (Doc#7)
5. Review SAFE Report, including new LPUE by area data (Doc #2, #2a, and #2b)

**NOT selecting Preferred Alternatives** – more analyses under development – Meetings scheduled for November 13 and 14

# Framework 26 - Purpose and Need

- The purpose of this action is to prevent overfishing and improve yield-per-recruit from the fishery.
- The primary need for this action is to set specifications to adjust the day-at-sea (DAS) allocations, general category fishery allocations and area rotation schedule for 2015 and 2016 (default)
- In addition, the Council added other issues to be addressed. In September that list was **prioritized**:
  1. Revise “flaring bar” provision for turtle deflector dredge
  2. Allow fishing in state waters after NGOM hard-TAC is reached
  3. Make turtle regulations consistent
  4. Develop PROACTIVE AMs for northern WP and YT stocks
  5. Allow a limited access vessel to declare out of fishery on return to port
  6. Develop REACTIVE AMs for northern WP and revise AMs for YT

# Part I: Projection Results

- PDT met on October 15 and reviewed preliminary projections
- Conference Call on October 21 to review revised runs based on PDT input
- On October 24 an issue was discovered with the model results when other runs were being completed
- Final results presented in Document #4 and additional materials presented today
- Council staff will summarize projection results and preliminary economic analyses
- Dr. Paul Rago from NEFSC available as well for questions

# Section 2.2 - Specification Alternatives

- All GB access areas will be closed, 3 MA trips,
- Similar DAS to 2014 (30 or 31 DAS)
- Total catch about 45-46 million pounds (over 10 million lb. increase from 2013)

- **Alternative 1 – No Action**

- Default from FW25 - 75% of projected DAS, no AA trips

- **Alternative 2 – Basic Run**

- No changes to AA boundaries

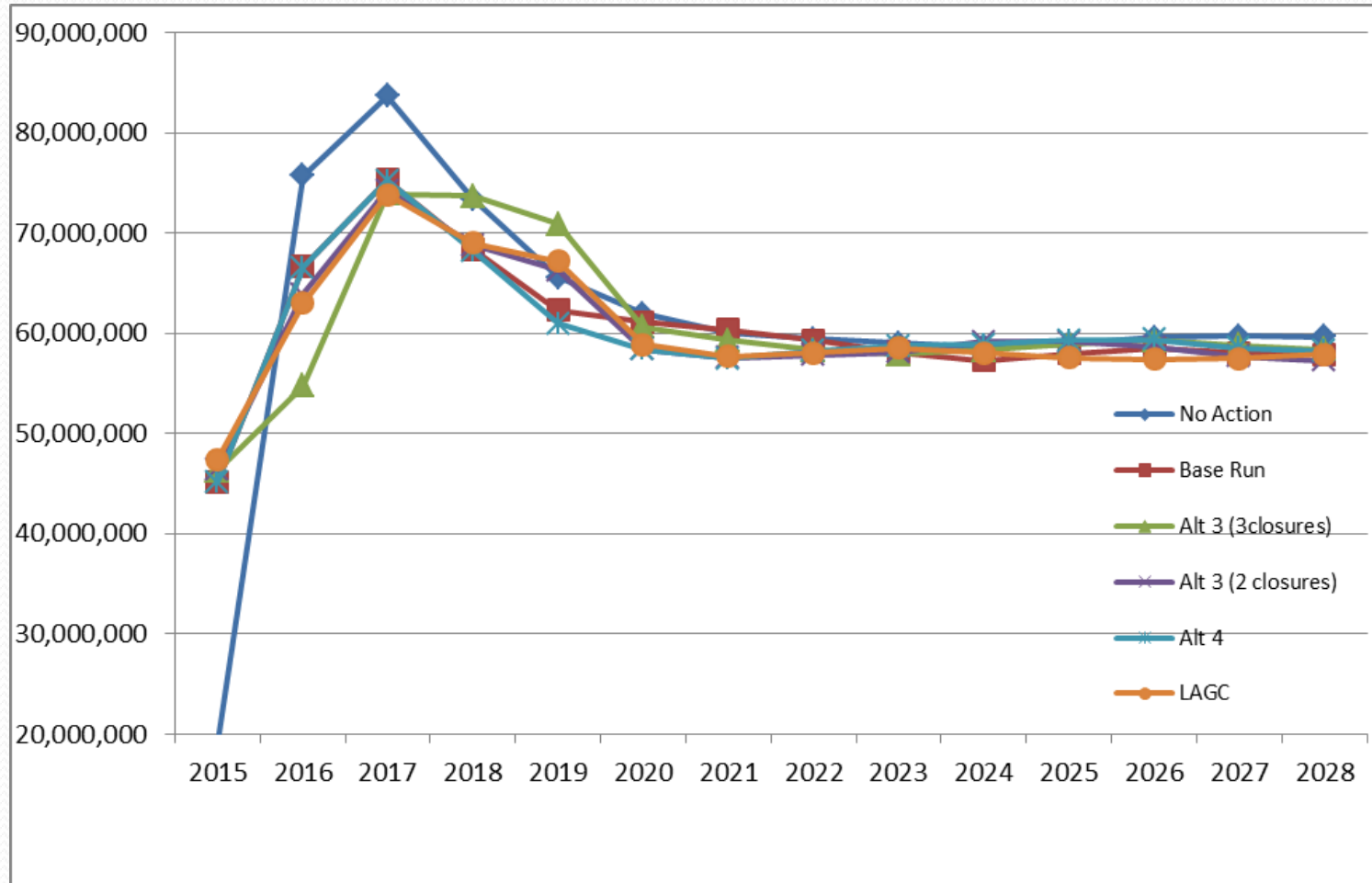
- **Alternative 3 – Modify access areas to reduce impacts on small scallops (CA2, NL, and ETA)**

- **Alternative 4 – No modifications to AA and reduce F in MA AA to reduce impacts on small scallops**

# Part I: Projection Results (cont.)

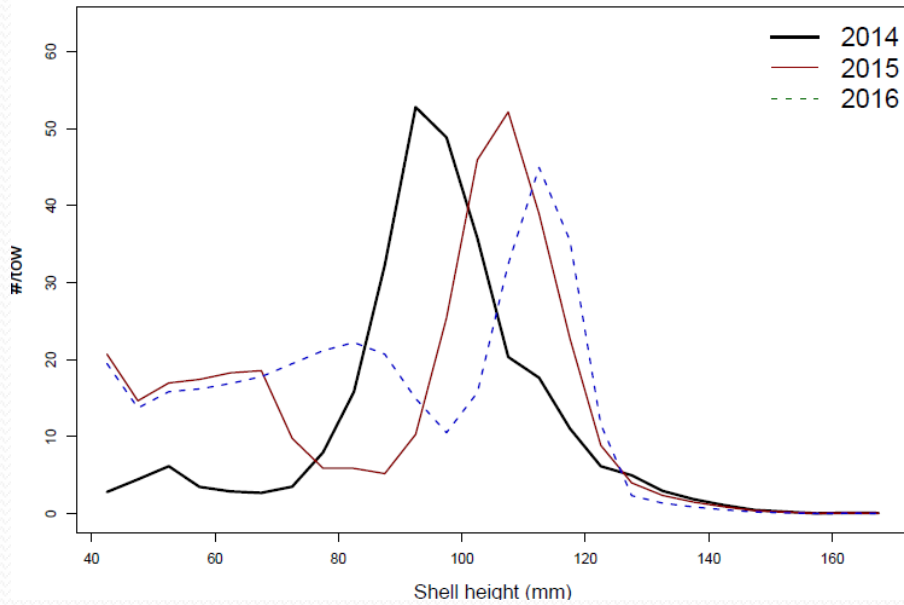
- Document #4 - 7 separate runs
- No Action (17 DAS and no AA trips in 2015)
- Alt 2 – Base Run –  $F = 0.48$  in open areas and  $0.35 F$  in MA Aas
- Alt 3 – 3 Closure Run –  $F = 0.48$  in open areas and estimate of where fishing would go for MA AA because flexible allocation a potential ( $HC = 0.35$ ;  $ETA_{open} = 0.50$ ;  $ETA_{closed} = 0.0$ ;  $DEL = 0.30$ )
- Alt 3 – 2 closure Run – same as Alt3 but no ETA closure (0.35)
- Alt 4 – Reduced  $F$  in MA AA because no closure of ETA (0.30)
- Run to allow more LAGC catch from MA AA (up to 2mil lbs)
- Status Quo – FY2014 - 31 DAS and 2 13,000 pound trips

# Projected Landings

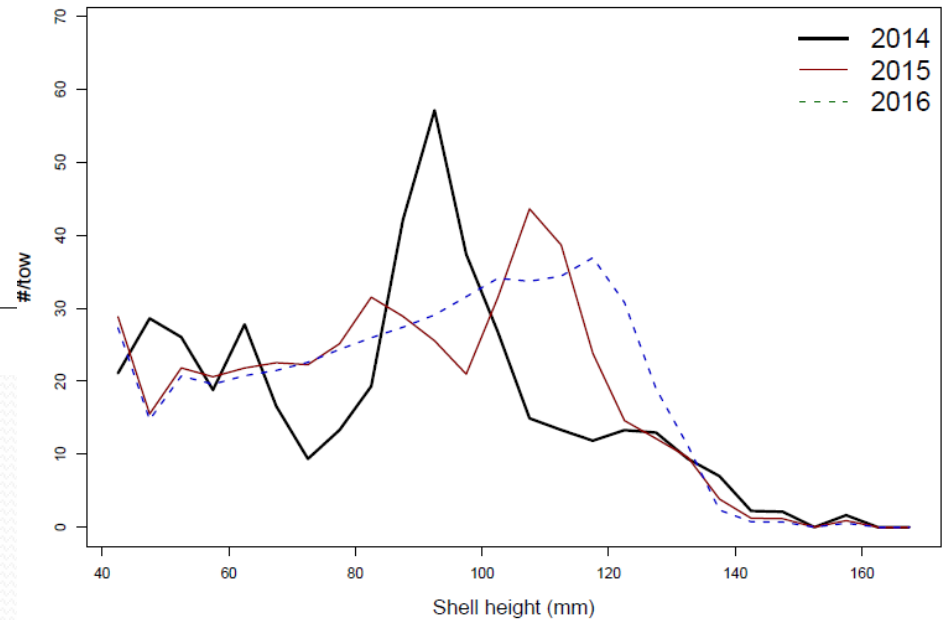


# Projected SH Frequencies

Hudson Canyon S



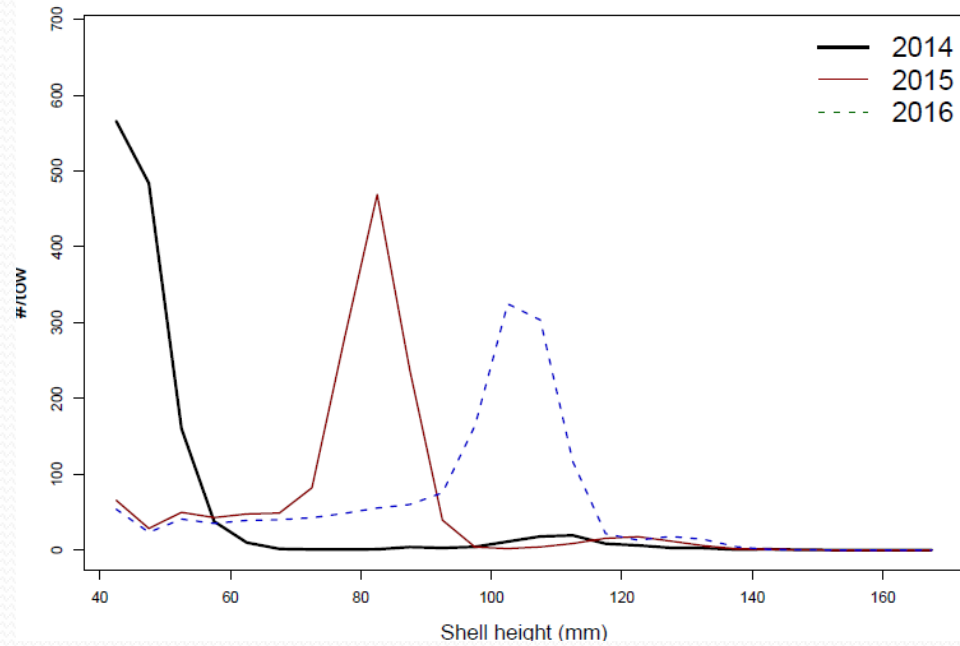
Delmarva



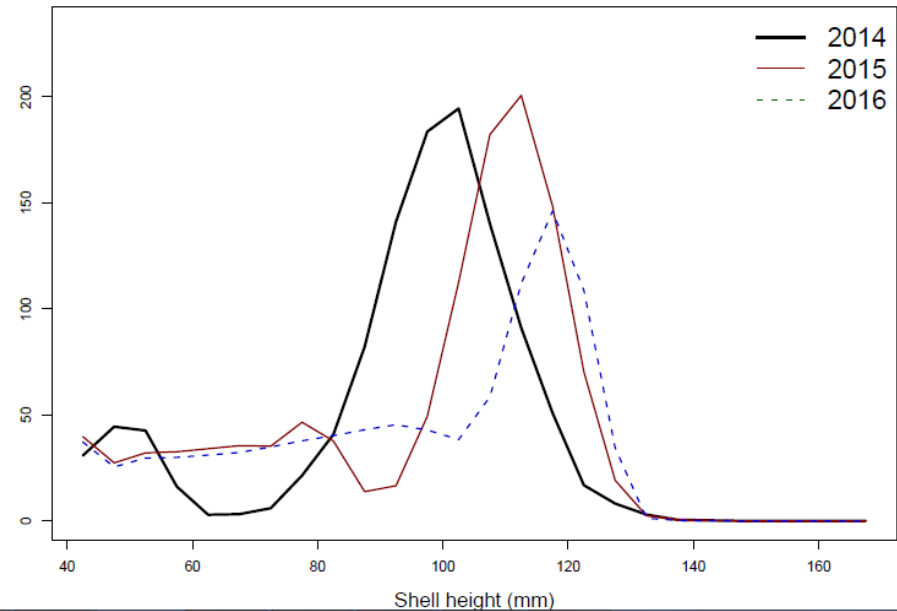


# Projected SH Frequencies

Elephant Trunk Closed



Elephant Trunk Open



# Projected Landings

Sub period	Fishing year	1. No Action	2. Basic run	3. 3 new closures	4. 2 closures	5. Reduced F	6. Extra GC with 2 closures
2015-2016	2015	19	45	46	46	45	47
	2016	76	67	55	64	67	63
<b>2015-2016 Total</b>		<b>95</b>	<b>112</b>	<b>101</b>	<b>110</b>	<b>112</b>	<b>110</b>
2017-2019	2017	84	75	74	74	75	74
	2018	73	68	74	69	68	69
	2019	66	62	71	66	61	67
<b>2017-2019 Total</b>		<b>223</b>	<b>206</b>	<b>219</b>	<b>209</b>	<b>204</b>	<b>210</b>
2020-2028	2020	62	61	61	58	58	59
	2021	60	60	59	58	57	58
	2022	59	59	58	58	58	58
	2023	59	58	58	58	59	59
	2024	59	57	58	59	59	58
	2025	59	58	59	59	59	58
	2026	60	58	59	59	59	57
	2027	60	58	59	58	59	58
	2028	60	58	58	57	58	58
<b>2020-2028 Total</b>		<b>537</b>	<b>529</b>	<b>530</b>	<b>524</b>	<b>527</b>	<b>522</b>

# Projected Revenues

Sub period	Fishing year	1. No Action	2. Basic Run	3. 3 new closures	4. 2 closures	5. Reduced F	6. Extra GC with 2 closures
<b>2015-2016</b>	2015	258.5	548.3	557.5	560.6	548.1	570.4
	2016	810.5	736.7	631.7	713.6	736.0	705.3
<b>2015-2016 Total</b>		<b>1069.0</b>	<b>1285.0</b>	<b>1189.2</b>	<b>1274.2</b>	<b>1284.1</b>	<b>1275.7</b>
<b>2017-2019</b>	2017	864.5	800.9	790.8	793.5	800.5	790.7
	2018	790.5	751.2	793.2	754.9	749.4	756.6
	2019	726.6	700.1	774.6	736.8	687.7	744.3
<b>2017-2019 Total</b>		<b>2381.7</b>	<b>2252.1</b>	<b>2358.6</b>	<b>2285.3</b>	<b>2237.5</b>	<b>2291.5</b>
<b>2020-2028</b>	2020	698.4	692.1	686.4	666.7	666.6	670.4
	2021	684.0	686.0	675.6	660.9	660.5	661.2
	2022	678.6	676.4	667.3	663.8	668.0	665.4
	2023	674.6	666.4	664.4	667.6	672.4	669.5
	2024	671.9	659.3	668.5	676.3	673.6	665.0
	2025	675.6	665.9	673.9	675.6	677.7	661.1
	2026	680.9	669.7	677.2	670.1	677.4	659.8
	2027	681.7	666.0	672.4	662.1	669.8	661.3
	2028	680.9	665.6	669.6	659.3	668.8	665.5
<b>2020-2028 Total</b>		<b>6126.6</b>	<b>6047.4</b>	<b>6055.3</b>	<b>6002.3</b>	<b>6034.8</b>	<b>5979.2</b>
<b>Grand Total</b>		<b>9577.3</b>	<b>9584.6</b>	<b>9603.0</b>	<b>9561.9</b>	<b>9556.5</b>	<b>9546.4</b>

Revenue Impacts similar – All about \$550 in 2015; Alt 3 lower in ST  
 But when ETA opens in 2017 about \$50-100 million more than runs that keep the sub area open

# Summary of projection results

- Overall the results similar in ST and LT
- Closing NL extension has essentially no effect in ST
- Closing CA2 extension costs about 1 DAS in ST
- Closing both increases landings about 3mil in midterm
- Closing ETA subarea has lower landings when area closed in 2015 and 2016, but when it opens catch increases about 10 mil lbs. for 2017-19 compared to runs that do not close ETA
- Alt 4 – same impacts as base run, lowest catch in mid years because it does not close ETA subarea

## Part II: Recent PDT input on measures

- Back cover of FW26 – 7 items
- Left #8 off by accident – from PDT call on 10/21
  1. Transit rules for new closure areas
  2. Alt 2 and 4 should be lottery allocation only, only flexible allocation if ETA subarea closed
  3. Option 4 for LAGC access in MA AAs – same overall %
  4. Carryover provisions ok?
  5. Note new OFL/ABC values
  6. Status Quo for NGOM and Incidental TACs
  7. Modify default DAS to 20 DAS minimum
  8. Seasonal closure of MA AAs – Sept15-Nov30 – Doc #7

# Part III: Enforcement Committee Input

- Meeting on October 27, 2014
- Reviewed 4 specific items in FW26
  1. Area boundaries and transit rules for new closures
  2. Lottery vs. Flexible Boundary Allocation Alternatives
  3. Provisions for allocating and monitoring AA trips (prelanding and carryover provisions)
  4. VMS corridor and DOF alternative

## *2 Consensus Statements*

# Part IV and V: Review in the Afternoon

IV – Review status of VMS Corridor Analysis – Doc #6

V – Review SAFE Report and LPUE by area data –  
Documents #2, 2a, and 2b