

Herring Committee Report

Deirdre Boelke, NEFMC Staff

NEFMC Meeting
June 23, 2021



New England
Fishery Management Council

Where are we on 2021 herring priorities?

- April 2021 Council meeting:
 - *Combined rebuilding plan and AMs into Framework 9 (FW9).*
 - *Clarified scope of Framework 7 (FW7) (spawning adults; herring fishery only).*
- June 2021 Council meeting: Update only, no action needed.
- September 2021 Council meeting – final action Framework 9.

Draft Framework 9 (Doc. #2)

Action 1 – Rebuilding Plan

- Alt. 1 (No Action)
- Alt. 2 (A8 ABC CR)
- Alt. 3 (7yr constant F)

	F rebuild	Year rebuild	# years	P rebuild	P overfished
Alt. 2	0.09 – 0.43	2026	5	50%	2% (2026)
Alt. 3	0.48	2028	7	50%	2% (2028)

Sect 4.1.4 - Table 1 part of Alt 2 and Alt 3.

No action needed – alternatives fully developed

Rebuilding plan projections

- Assumptions all the same from the last assessment.
- Recruitment – “Average” - *Drawn from the empirical cumulative distribution of the estimated recruitments from 1965-2017. The estimates of recruitment from 2018-2019 were excluded (very uncertain).*
- PDT also completed projections with autocorrelated recruitment (AR) (results presented in April).
- SSC input (SSC memo behind Tab 12).
- After the SSC meeting the PDT ran 2 additional projections for both alternatives (PDT memo - Doc.# 3)
 - Assume AVG recruitment, when in truth AR.
 - Assume AR recruitment, when in truth AVG.
- New results in Tables 2 and 4, previous runs in Tables 1 and 3.

Summary of preliminary results

		F	F	P ofd	P ofd	ABC	ABC	P reb	P reb	Year
		2022	2026	2022	2026	2022	2026	2022	2026	reb
Alt. 2	AVG	0.09	0.43	89%	2%	8,722	80,407	3%	53%	2026
	AR	0.09	0.43	89%	2%	8,199	62,439	3%	34%	2030
	<i>AVG in AR</i>	0.10	0.70	89%	45%	8,722	80,407	3%	31%	2032 +
	<i>AR in AVG</i>	0.08	0.28	89%	4%	8,199	62,439	3%	68%	2025
Alt. 3	AVG	0.48	0.48	92%	5%	24,035	79,978	2%	42%	2028
	AR	0.36	0.36	92%	25%	17,771	50,644	2%	34%	2028
	<i>AVG in AR</i>	0.57	0.80	90%	50%	24,035	79,978	3%	29%	2032 +
	<i>AR in AVG</i>	0.31	0.22	90%	3%	17,771	50,644	3%	68%	2025



Figure 2

P closure and # years rebuild

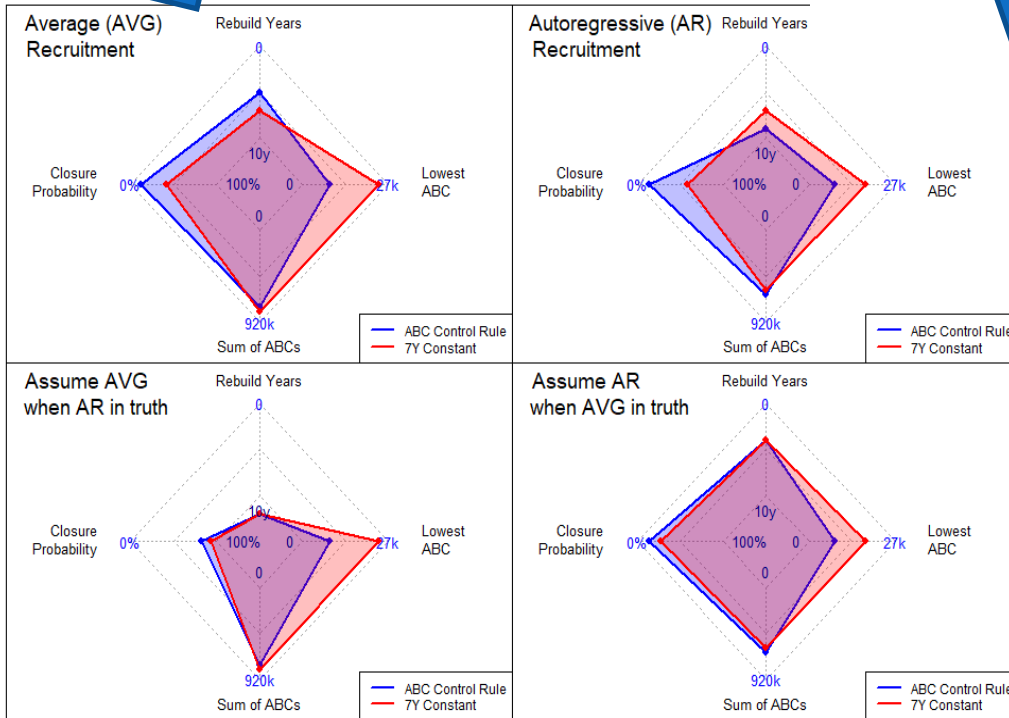
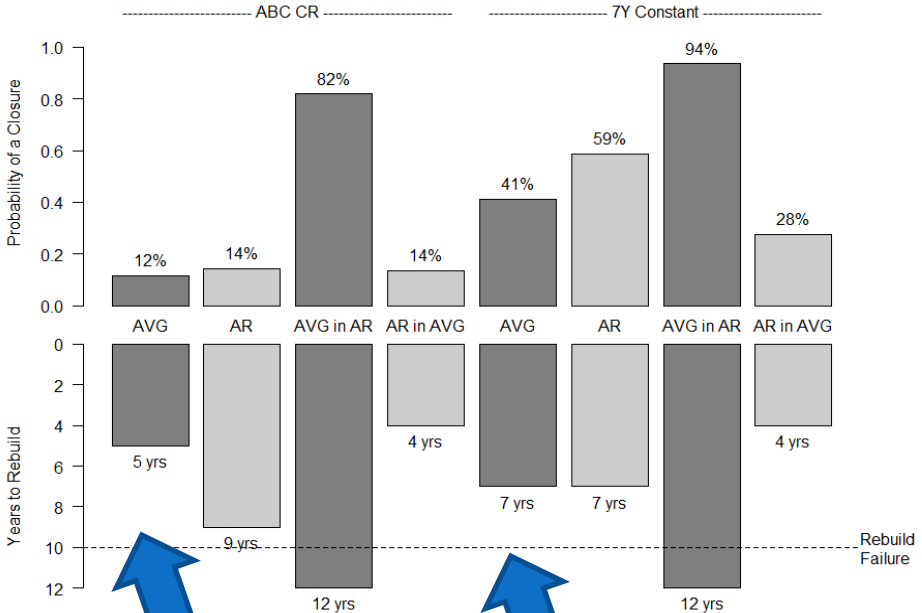


Figure 3

Radar plots comparing 4 metrics

Initial PDT Findings (p.8-9 of Doc. #3)

1. Rebuilding plan alternative vs. sensitivity runs
2. Probability of fishery closure and risks of low biomass – Allee effect could worsen impacts
3. Stock does not rebuild in 10 years for some scenarios under lower recruitment
4. Consideration of risk
5. Impact on ABC
6. Presentation of results – input?



Action 2 – Adjust Herring AMs

4.2	
4.2.1	Overage AMs
4.2.1.1	Alt. 1 – No Action – In-season proactive AMs that implement possession limits and reactive pound for pound paybacks if sub-ACLs exceeded.
4.2.1.2	Alt. 2 – up to 10% overage of sub-ACL allowed if total ACL not exceeded
4.2.1.3	Alt. 3 – overages allowed if total ACL not exceeded
4.2.2	Carryover AM (underages)
4.2.2.1	Alt. 1 – No Action – automatic up to 10% carryover per sub-ACL, ACL does not increase.

No action needed – alternatives fully developed



Committee Meeting – June 4, 2021 (Doc.#5)

- Reviewed updated PDT analyses – provided input on presentation of results for draft analyses.
- Recommend moving potential adjustments to carryover measures to considered and rejected section.
- Some questions about timing and process – how does the rebuilding plan fit in with scheduled assessments and specification packages; how much flexibility is there to adjust ABCs under a rebuilding plan.



Near-term Herring specification process

DRAFT

2020
Mngt track
Assessment
(4/20-8/20)

2022
Mngt track
Assessment
(4/22-8/22)

2024
Mngt track
Assessment
(4/24-8/24)

FW8 (2021-2023 specs)
(Final action 9/20
Effective 3/21)

FWx (2023-2025 specs)
(Final action 9/22
Target Imp. 3/23)

FWy (2025-2027 specs)
(Final action 9/24
Effective 3/25)

Near-term Herring specification process

DRAFT

2020
Mngt track
Assessment
(4/20-8/20)

2022
Mngt track
Assessment
(4/22-8/22)

2024
Mngt track
Assessment
(4/24-8/24)

FW8 (2021-2023 specs)
(Final action 9/20
Effective 3/21)

FWx (2023-2025 specs)
(Final action 9/22
Target Imp. 3/23)

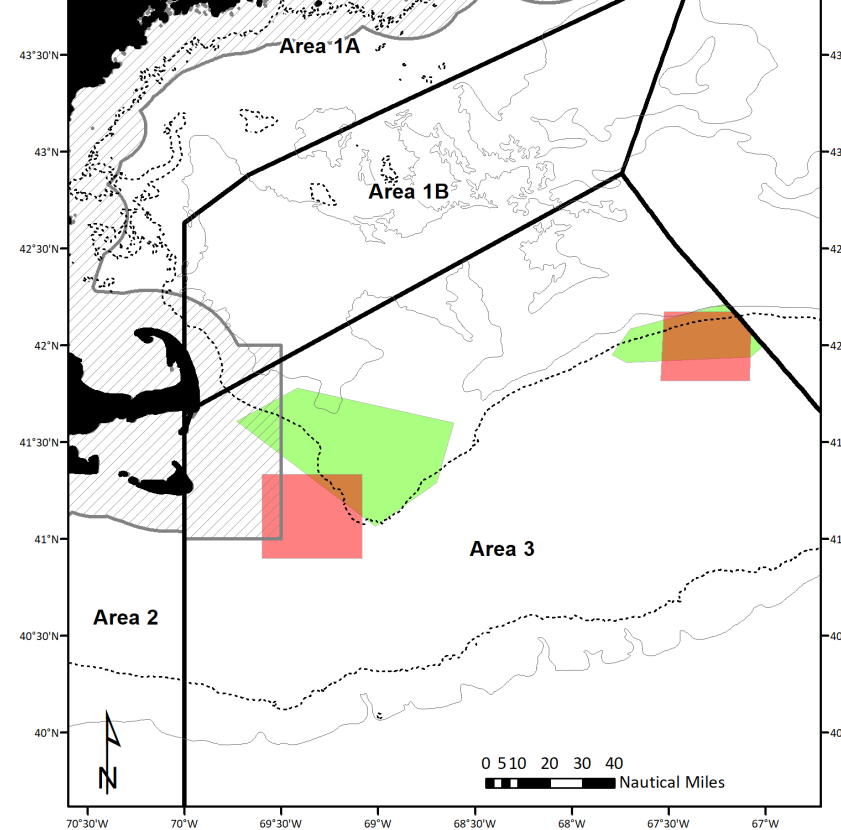
FWy (2025-2027 specs)
(Final action 9/24
Effective 3/25)

Herring
OFD
(10/20)

FW9 (rebuilding plan)
(Final action 9/21
Target Imp. 4/22)

Framework 7 – Doc. #4

- Goals and Objectives updated from April meeting.
 - No Action – no closure on GB
 - Spawning closure on GB
 - 2 area options
 - 2 season options
 - options for which vessels restricted
- Issue #1 – Council addressed in April.**
- Required review - **Issue #2 - Cmte addressed in Feb.**
 - Spawning Tolerance – **Issue #3 – Cmte tasking, more development needed**



Issue #3 – Spawning tolerance (DRAFT)

Action 3	Possession of spawning adult herring
4.3.1	Alt. 1 (No Action) no possession limit on spawning adult herring
4.3.2	Alt. 2 - Implement individual spawning adult herring tolerance possession limit per vessel (<i>more development needed</i>)
4.3.3	Alt. 3 - Implement fleetwide spawning adult herring tolerance possession limit that triggers a spawning closure area (<i>more development needed</i>)
4.3.4	Alt. 4 - Spawning avoidance program – in-season monitoring with triggered spawning closure (<i>some of these ideas folded in above – more development needed</i>)

PDT discussion and recommendations (bold)

- Initial discussions with NMFS Enforcement et al. (4/27) – Multiple concerns raised: resources involved, logistics of monitoring long offloads, training for gonad sampling, etc.
 - Discussed potential use of NMFS federal biological sampling program (contracted port agents) vs. dockside samplers that are part of new IFM program (EFP for part of fishery only).
 - If goal is to protect spawning adults – closing areas real time likely more effective and in-line with objective compared to an individual spawning possession limit on every trip. Program should be designed to promote compliance and fishing behavior change to avoid spawning fish.
1. ***Remove tolerance by individual vessel alternative.***
 2. ***If in-season feasible, fleetwide trigger of area closure based on GSI samples, not a possession limit threshold (20%).***

Committee Meeting – June 4, 2021 (Doc. #5)

- Committee wants to take more time to explore potential alternatives to default closures already developed.
- Several brainstorming ideas have been shared; more development needed; not there yet.
- Committee motion to hold a joint AP / PDT meeting to discuss feasibility of in-season monitoring as it relates to spawning protection measures, ideally in-person meeting.
- This will delay the FW7 timeline; viable options may not surface.
- Under low herring quotas minimal impacts expected – thus Committee supportive of taking more time to develop alternatives.